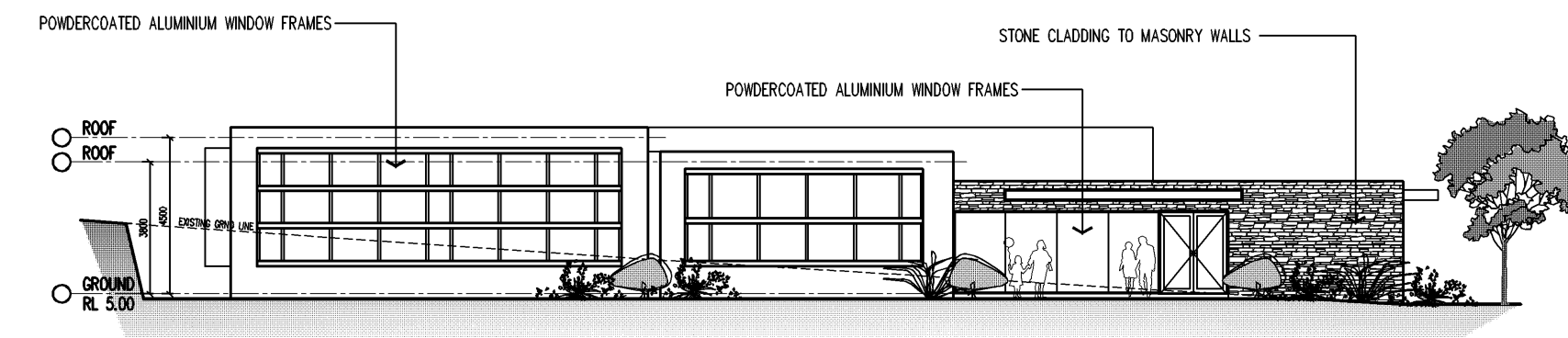
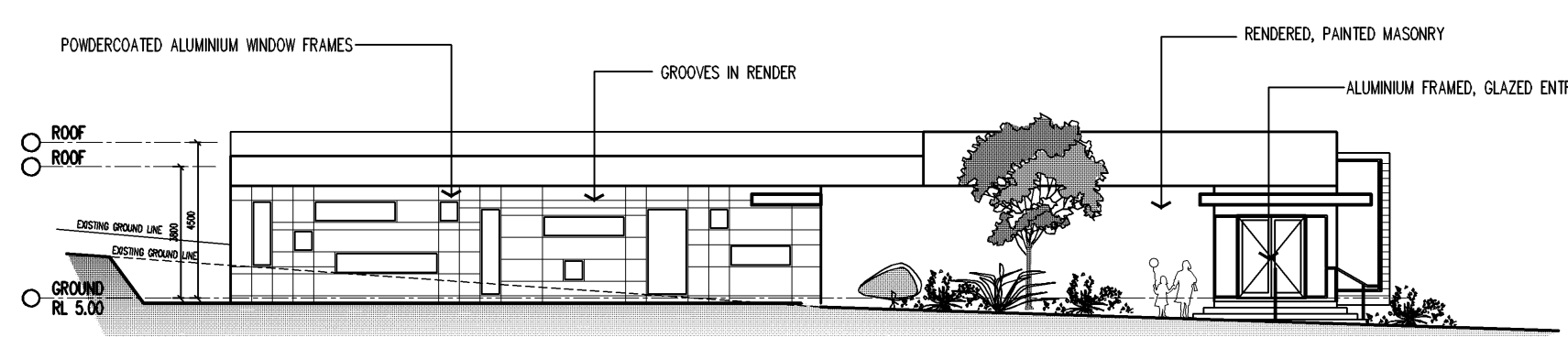


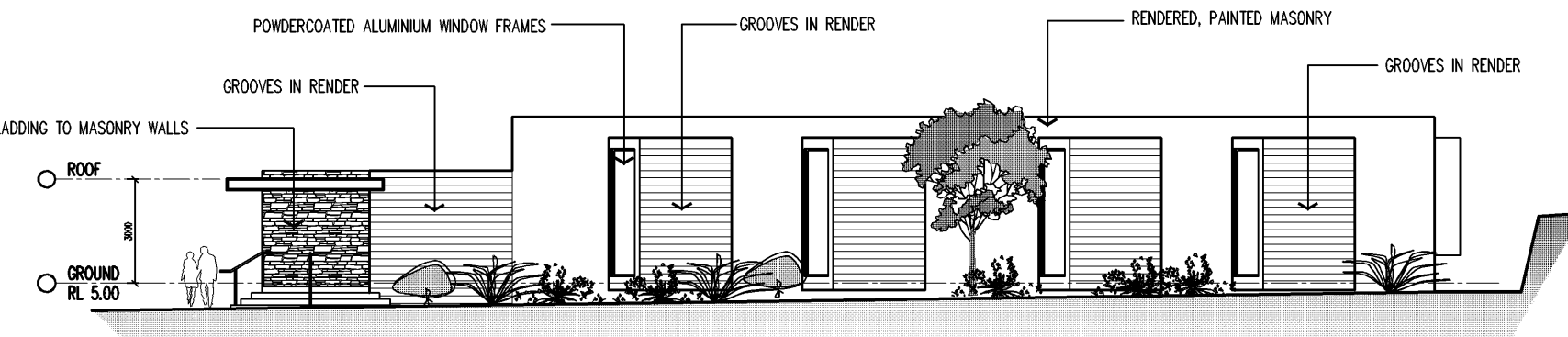
FLOOR PLAN
POOL and GYM



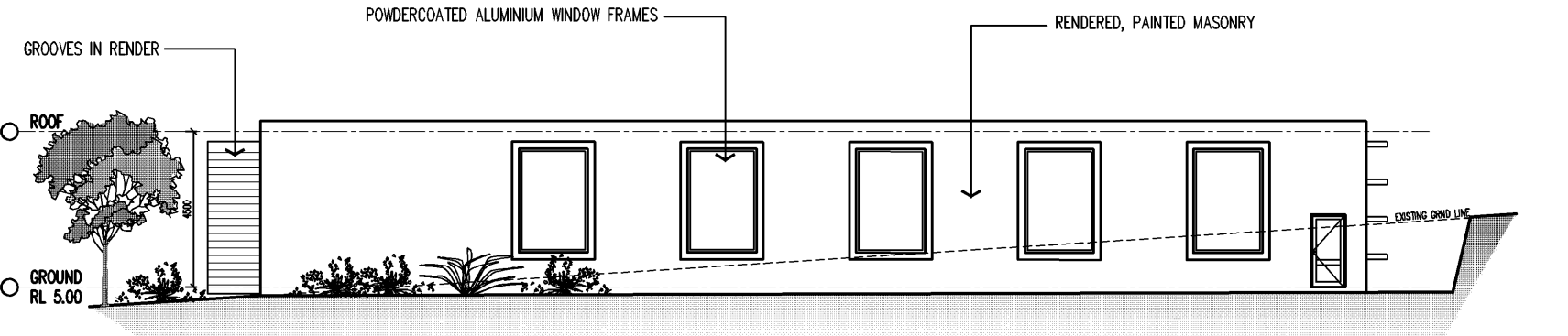
NORTH ELEVATION
POOL and GYM



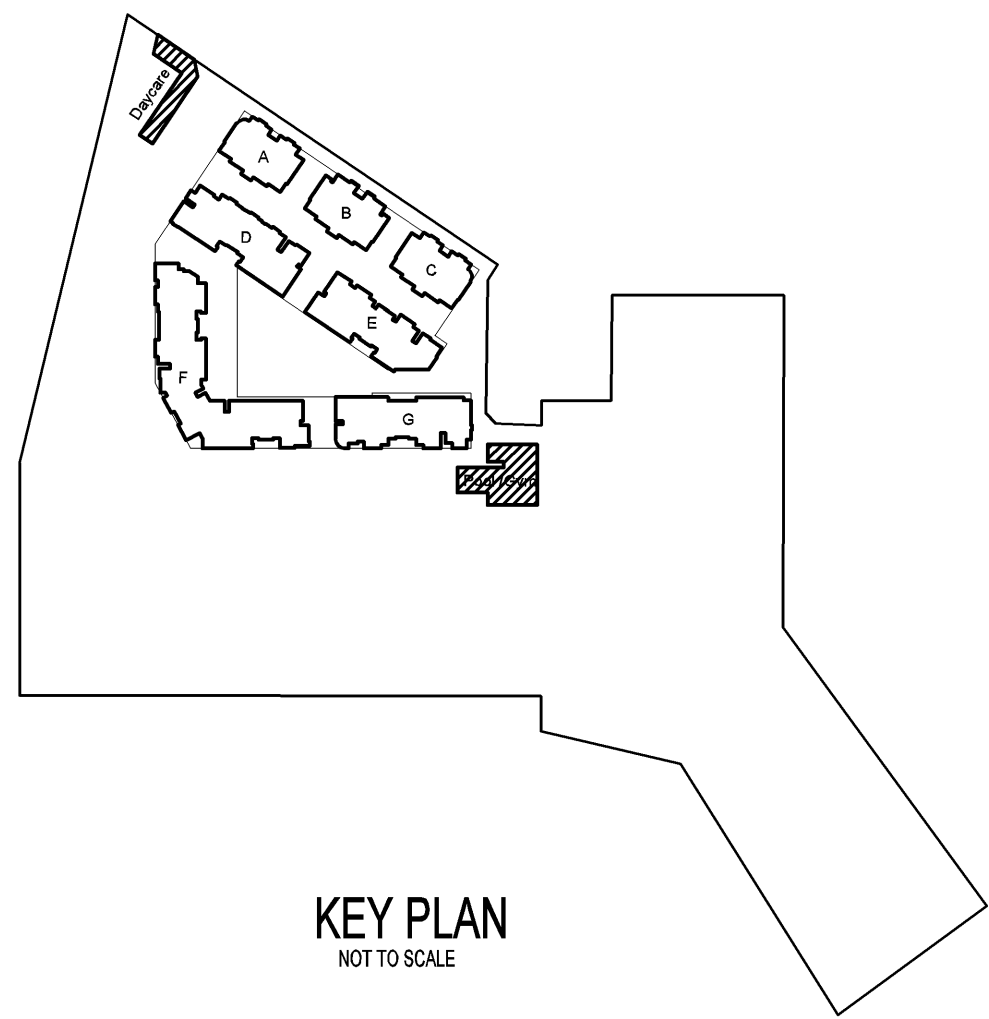
WEST ELEVATION
POOL and GYM



SOUTH ELEVATION
POOL and GYM

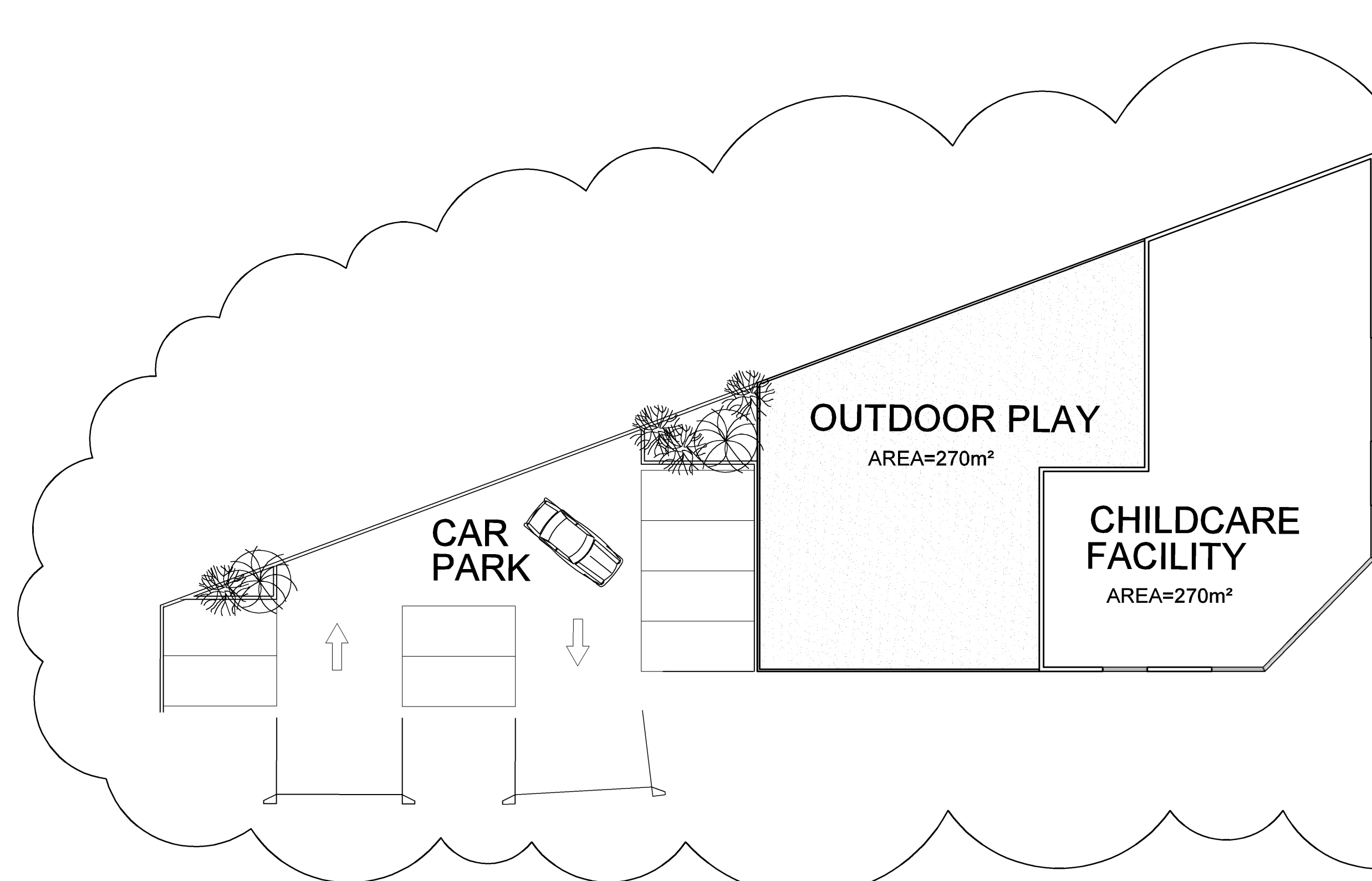
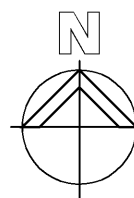


EAST ELEVATION
POOL and GYM



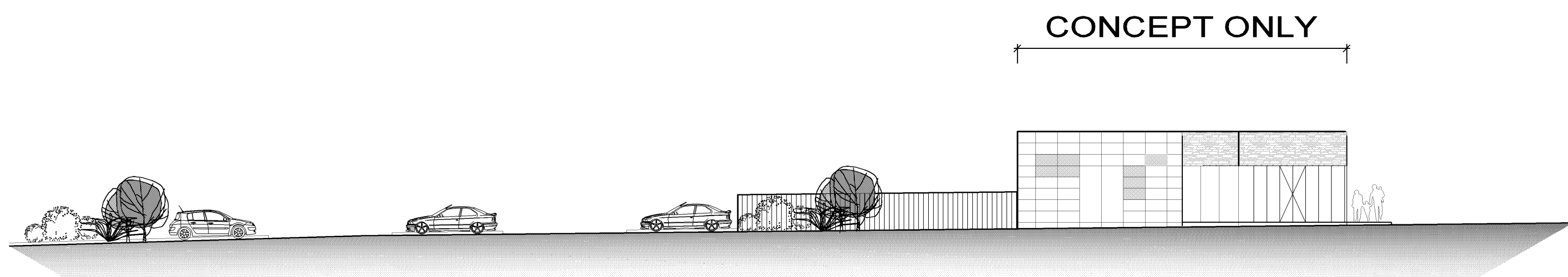
KEY PLAN
NOT TO SCALE

2 POOL & GYM - PLAN
SCALE: 1:200

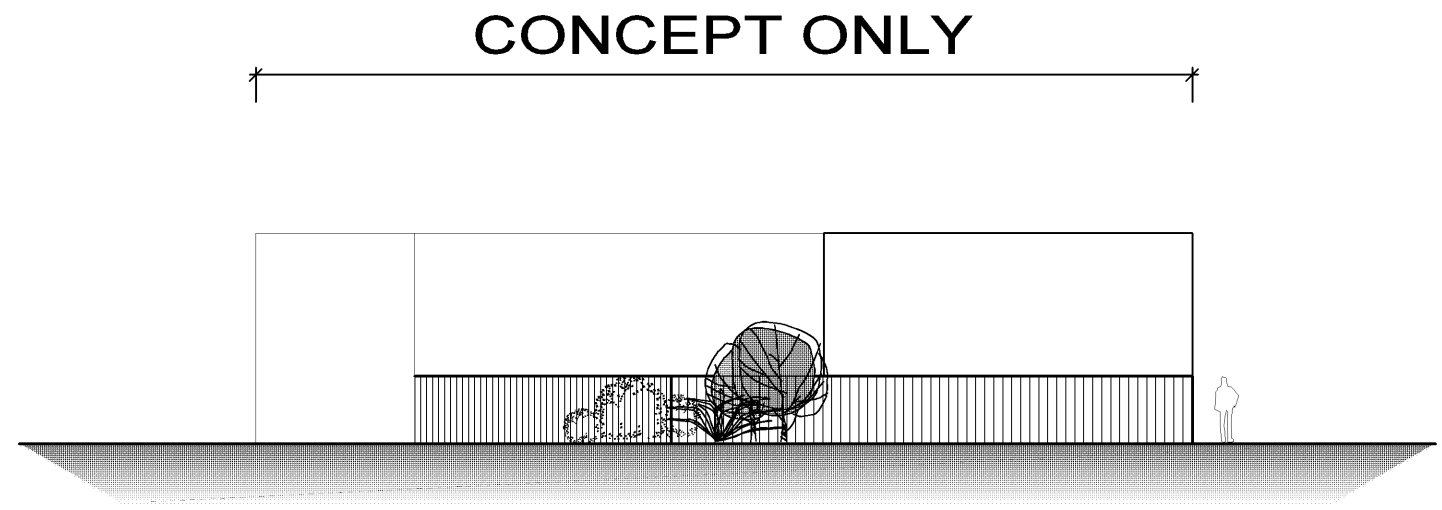


1 CHILD CARE - PLAN
SCALE: 1:200

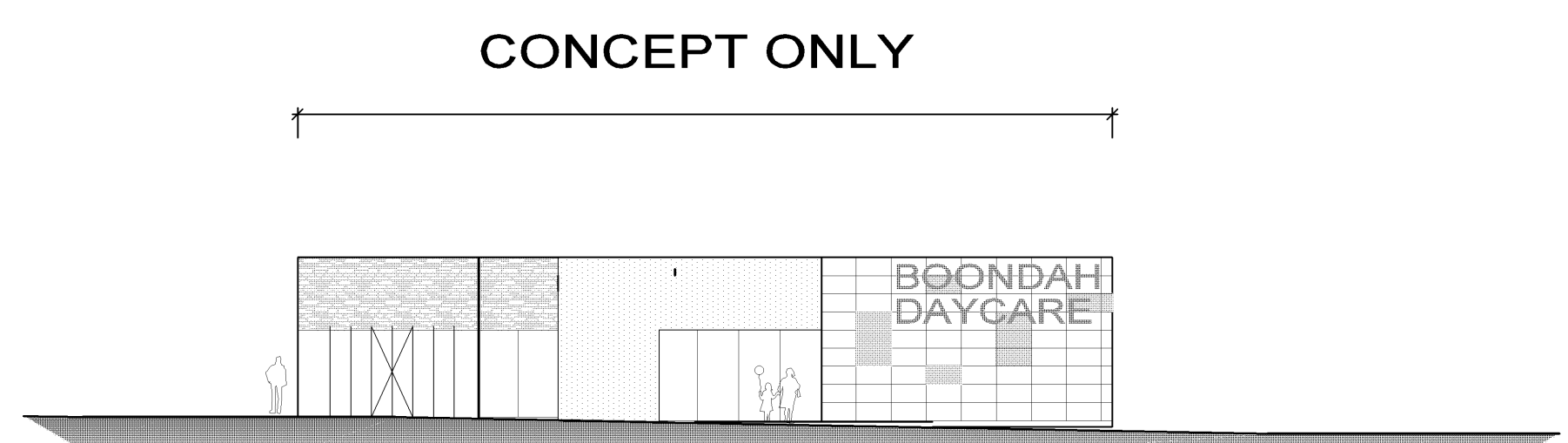
CONCEPT ONLY



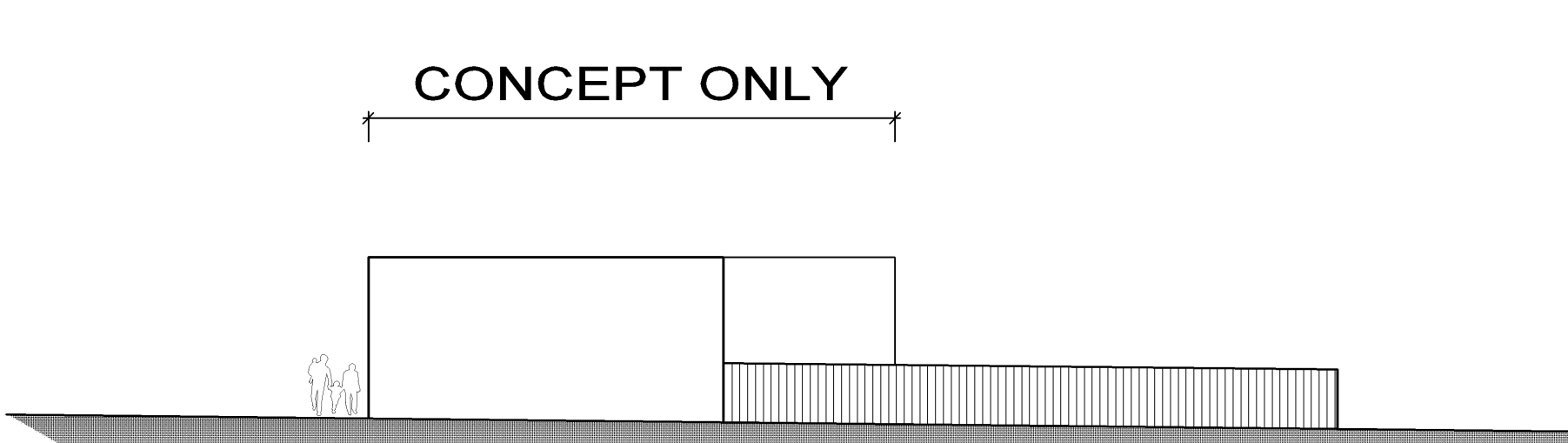
2 CHILD CARE - EAST ELEVATION (TO FUTURE DETAIL)
SCALE: 1:200



3 CHILD CARE - SOUTH ELEVATION (TO FUTURE DETAIL)
SCALE: 1:200



4 CHILD CARE - NORTH ELEVATION (TO FUTURE DETAIL)
SCALE: 1:200



5 CHILD CARE - WEST ELEVATION (TO FUTURE DETAIL)
SCALE: 1:200

NOTE: CHILD CARE CENTRE PLANS & ELEVATIONS
TO BE SUBJECT TO A SEPERATE D.A.

CHILD CARE-POOL PLANS & ELEV
SCALE 1:200

ISSUE	DATE	REVISION	BY	ISSUE	DATE	REVISION	BY
A	03.08.10	RETAIL SHOPS DELETED, CHILD CARE BUILDING ENVELOPE AMENDED	ALM				
A	12.02.10	ISSUE FOR DA	TJ				

GENERAL NOTES
THIS DRAWING IS THE EXCLUSIVE PROPERTY OF MERITON APARTMENTS PTY LTD. AND THE REPRODUCTION OF ANY PART WITHOUT THE PRIOR WRITTEN CONSENT OF MERITON APARTMENTS PTY LTD IS A VIOLATION OF APPLICABLE LAWS. IN NO EVENT SHALL MERITON APARTMENTS PTY LTD BE HELD LIABLE FOR SPECIAL, CONSEQUENTIAL, INCIDENTAL OR PUNITIVE DAMAGES IN CONNECTION WITH THE USE OF THIS DOCUMENT. THIS DOCUMENT IS TO BE USED IN CONNECTION WITH THE STRUCTURAL, MECHANICAL, ELECTRICAL AND / OR ANY OTHER CONSULTANTS DOCUMENTATION AS MAY BE APPLICABLE TO THE PROJECT PRIOR TO THE START OF ANY WORKS AND FOR ITS DURATION.

PROJECT
PROPOSED RESIDENTIAL DEVELOPMENT NEW RESIDENTIAL DEVELOPMENT 14-18 BOONDAH ROAD WARREWIM, NSW 2102

DRAWING TITLE
CHILD CARE-POOL PLANS & ELEV

PROJECT No.	DATE	DRAWING No.	REV.
697	8/13/2010	DA30	B