

LEGEND

MACPHERSON STREET ENTRY STATEMENT
Stone wall signage and feature paving.
Feature tree and shrub planting include:
Livistonia australis (400 Lire), Doryanthes excelsa

OVERLAND FLOWPATH
Tree species to include:
Acmena smithii
Casuarina glauca
Eucalyptus robusta
Grass species to include:
Dianella caerulea
Lomandra longifolia
Pennisetum Nairayi
Poa poliformis
Themeda australis

25m BUFFER STRIP
Strip to be rehabilitated to contain open space areas, gardens and a pedestrian/ cycle path. The Buffer Strip is to provide a transition from the public riparian zone and residential precinct

MACPHERSON STREET STREETSCAPE
Selected tree species:
Eucalyptus robusta (400 Lire)
Selected shrubs and grasses include:
Callistemon White Anzac
Grevillea speciosa
Dianella caerulea
Lomandra tanika.

EXISTING TREES TO BE RETAINED
Refer to tree survey plans:
123899 TREES2 REV 1
123899 TREES3 REV 1
123899 TREES3 REV 1
prepared by JBV Surveyors Pty Ltd
for the purpose of the proposed development.
SPECIOLUS COLTARAD TREES
Lagerströmia indica (Cape Myrtle)
Pyrus calleryana 'Chandler'
Magnolia Little Gem
BOONDAH ROAD
Argyrea laurifolia (Sydney Red Gum)
MACPHERSON STREET TREES
Lomandra longifolia (Swamp Mangrove)
ROAD TYPE A
Vaccinium laurifolium (Great Cherry)

ROAD TYPE B
Ternstroemia laurifolia (Water Gum)

PARK TREES
Ficus rubiginosa (Port Jackson Fig)
Casuarina glauca (Swamp Oak)
Pennisetum Nairayi
Lomandra longifolia
Acmena smithii
BOONDAH ROAD
Argyrea laurifolia (Sydney Red Gum)
MACPHERSON STREET TREES
Lomandra longifolia (Swamp Mangrove)
ROAD TYPE A
Vaccinium laurifolium (Great Cherry)

MASSSED NATIVE GRASSES
Planted in groups of 5 and 10
Species include:
Pennisetum
Poa and Themeda

Turf

Bi-Retention Bush

Private Planting

Private Courtyard

Entry Paving

Paved to Private
Courtyard

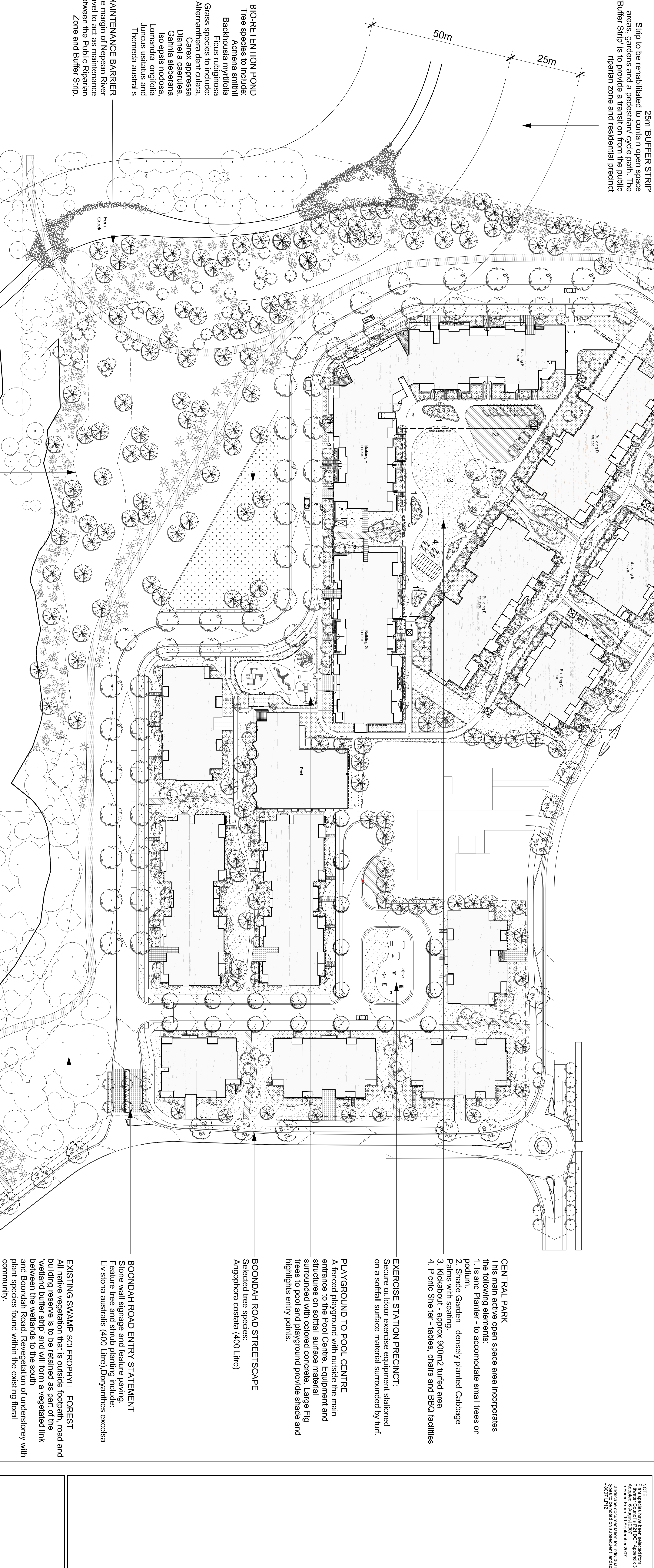
Gravelled Segregate

Gravel Path

Paved / Blk Path

Exposed Aggregate

Coloured concrete



BIO-RETENTION POND
Tree species to include:
Acmena smithii
Backhousia myrtifolia
Ficus rubiginosa
Grass species to include:
Alternanthera denticulata
Carex appressa
Dianella caerulea
Gahnia sieberiana
Isoplepis nodosa
Lomandra longifolia
Juncus ustulatus and
Themeda australis

1.5m MAINTENANCE BARRIER
1.5m wide margin of Nepean River gravel to act as maintenance barrier between the Public Riparian Zone and Buffer Strip.

ASSET PROTECTION ZONE (APZ)
25m wide buffer managed to reduce the bush fire hazard to an acceptable level. The APZ is made up of a 15m wide Inner Protection Area (IPA) and a 10m wide Buffer Zone consisting of carefully selected and located vegetation so as not to create a fire path.

15m INNER PROTECTION AREA
Forms part of the 25m Asset Protection Zone
Tree canopy coverage of less than 15% (25 trees).
Understorey to consist of managed grasslands and grasses.

10m BUFFER ZONE
Forms part of the 25m Asset Protection Zone
Tree canopy coverage of less than 30% (25 trees).
Understorey to consist of managed grasslands, low growing shrubs, grasses and groundcovers.

BIO-RETENTION POND
Tree species to include:
Acmena smithii
Backhousia myrtifolia
Ficus rubiginosa
Grass species to include:
Alternanthera denticulata
Carex appressa
Dianella caerulea
Gahnia sieberiana
Isoplepis nodosa
Lomandra longifolia
Juncus ustulatus
Themeda australis

BOONDAH ROAD ENTRY STATEMENT
Stone wall signage and feature paving.
Feature tree and shrub planting include:
Livistonia australis (400 Lire), Doryanthes excelsa

BOONDAH ROAD STREETSCAPE
Selected tree species:
Argophora costata (400 Lire)

PLAYGROUND TO POOL CENTRE
A fenced playground with outside the main entrance to the Pool Centre. Equipment and structures on softfall surface material surrounded with colored concrete. Large Fig trees to pool and playground provide shade and highlights entry points.

EXERCISE STATION PRECINCT:
Secure outdoor exercise equipment stationed on a softfall surface material surrounded by turf.

CENTRAL PARK
This main active open space area incorporates the following elements:
1. Island Planter - to accommodate small trees on podium.
2. Shade Garden - densely planted Cabbage Palms with seating.
3. Kickabout - approx 900m2 turfed area
4. Picnic Shelter - tables, chairs and BBQ facilities

EXISTING SWAMP SCLEROPHYLL FOREST
All native vegetation that is outside footpath, road and building reserve is to be retained as part of the wetland buffer strip and will form a vegetated link between the wetlands to the south and Boondah Road. Revegetation of understorey with plant species found within the existing floral community.

Client:
Mention Apartments Pty Ltd

Project:
14-18 Boondah Road
Warriewood

Site Image
14-18 Boondah Road
Warriewood NSW 1500
Project No: SM10041
Date: 07.02.2010
Scale: 1:500 @ A0

Vegetation Masterplan
Landscape Plan

FOR APPROVAL

SM10041 LA101 B

Notes:
Plant species have been selected from
Appendix 3 of the 2007 DC's Appendix 3
Approved 6 July 2007
In Force from 10 September 2007
Landscape documentation for individual houses are under
"6007 LP12"
"6007 LP12"

Item	Revised Description	Revised Date
1	Plant species have been selected from Appendix 3 of the 2007 DC's Appendix 3 Approved 6 July 2007 In Force from 10 September 2007	10/09/2007
2	Plant species have been selected from Appendix 3 of the 2007 DC's Appendix 3 Approved 6 July 2007 In Force from 10 September 2007	10/09/2007
3	Plant species have been selected from Appendix 3 of the 2007 DC's Appendix 3 Approved 6 July 2007 In Force from 10 September 2007	10/09/2007
4	Plant species have been selected from Appendix 3 of the 2007 DC's Appendix 3 Approved 6 July 2007 In Force from 10 September 2007	10/09/2007
5	Plant species have been selected from Appendix 3 of the 2007 DC's Appendix 3 Approved 6 July 2007 In Force from 10 September 2007	10/09/2007
6	Plant species have been selected from Appendix 3 of the 2007 DC's Appendix 3 Approved 6 July 2007 In Force from 10 September 2007	10/09/2007
7	Plant species have been selected from Appendix 3 of the 2007 DC's Appendix 3 Approved 6 July 2007 In Force from 10 September 2007	10/09/2007
8	Plant species have been selected from Appendix 3 of the 2007 DC's Appendix 3 Approved 6 July 2007 In Force from 10 September 2007	10/09/2007
9	Plant species have been selected from Appendix 3 of the 2007 DC's Appendix 3 Approved 6 July 2007 In Force from 10 September 2007	10/09/2007
10	Plant species have been selected from Appendix 3 of the 2007 DC's Appendix 3 Approved 6 July 2007 In Force from 10 September 2007	10/09/2007

Drawing Name:
Landscape Masterplan
Vegetation Plan

Client:
DM

Design Number:
SM10041

Design Version:
LA101 B