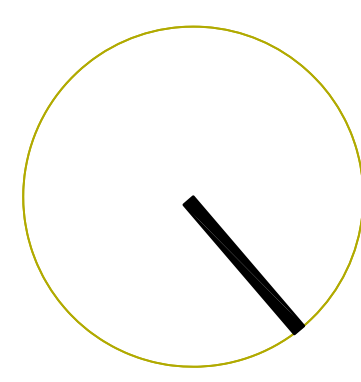
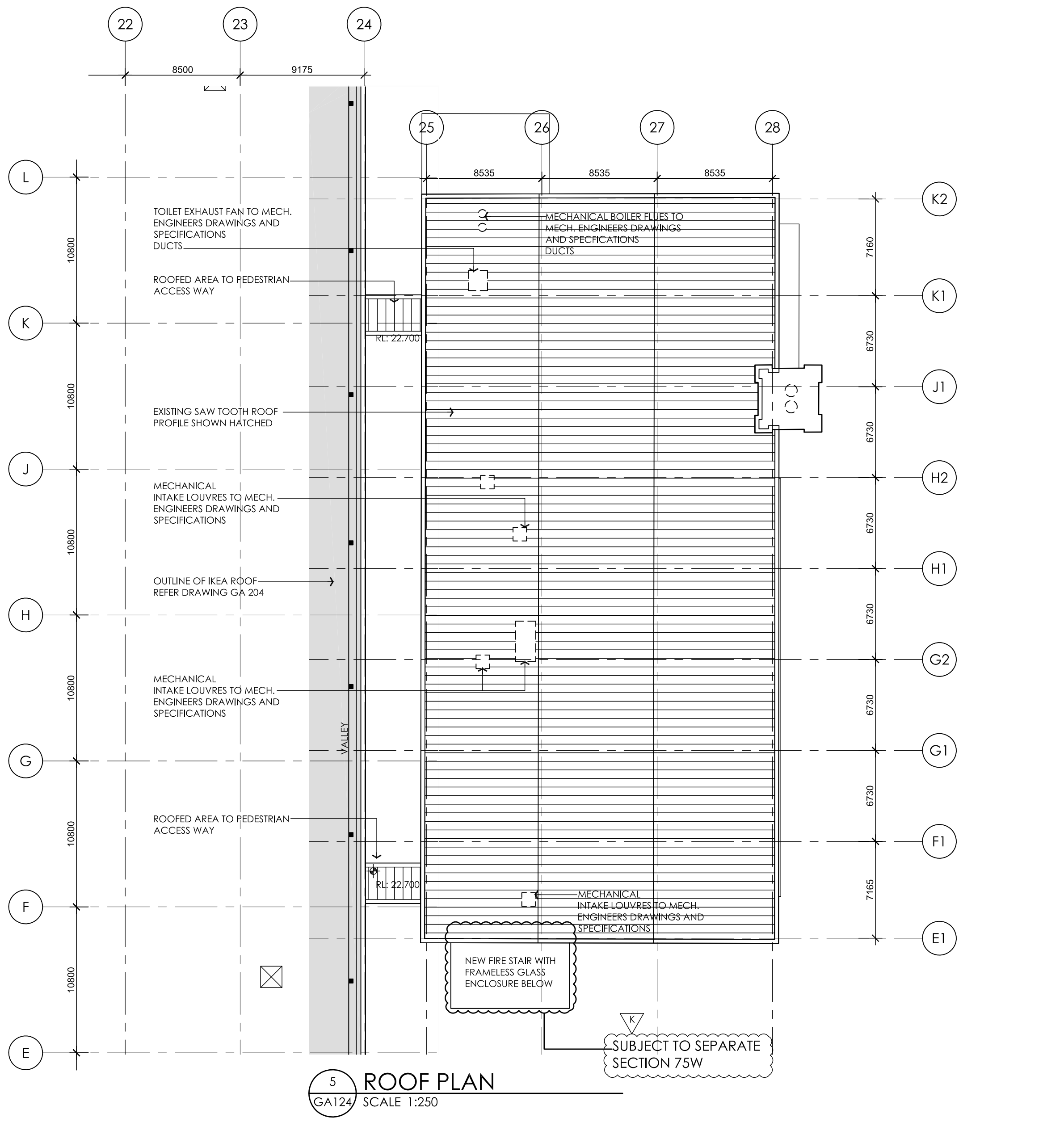
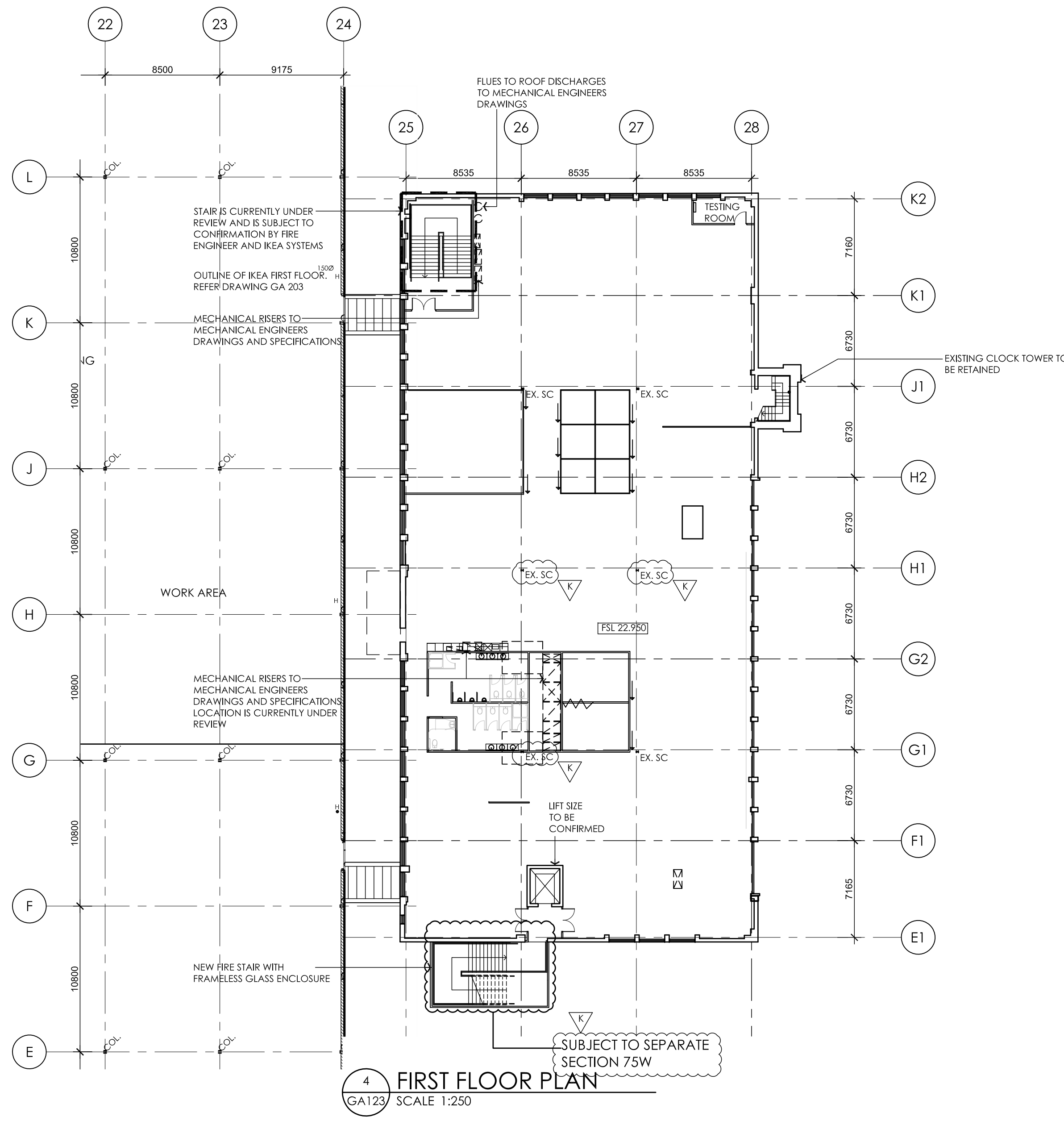


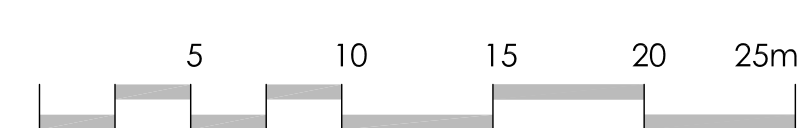
LAYOUT OF EXISTING ATECO BUILDING IS INDICATIVE AT THIS STAGE AND IS SUBJECT TO REVIEW AND CONFIRMATION BY IEKA SYSTEMS AND SERVICES ENGINEERS.



CONSTRUCTION ISSUE

| ISSUE | AMENDMENT | DATE | CHKD |
|-------|---|----------|--------|
| A | STRUCTURAL CONSTRUCTION CERTIFICATE ISSUE | 22.06.10 | S.M. |
| B | CONSTRUCTION ISSUE | 30.06.10 | S.M. |
| C | DELETED FILL TO BASEMENT LEVEL QL 25-26-K2-G2 | 15.09.10 | S.M. |
| D | NEW FIRE STAIR WITH FRAMELESS GLASS ENCLOSURE ADDED | 27.10.10 | C.S.G. |
| E | REVIEWED SERVER, COVENS & NETWORK ROOMS LAYOUTS TO IEKA SYSTEMS | 28.10.10 | C.K. |
| F | STAIR LOCATIONS CONFIRMED BY IEKA SYSTEMS | 04.11.10 | C.S.G. |
| G | NOTES ADDED: EXISTING STEEL COLUMNS ADDED | 07.12.10 | C.S.G. |
| H | ISSUED FOR CONSTRUCTION CERTIFICATE | 08.12.10 | C.S.G. |
| J | ISSUED FOR CONSTRUCTION CERTIFICATE | 04.01.11 | C.S.G. |
| K | NOTE UPDATED: ISSUED FOR CONSTRUCTION CERTIFICATE | 14.01.11 | C.S.G. |

- #### NOTES
- FIRE SEALANT TO ALL BUILDING JOINTS TO STRUCTURAL ENGINEERS' DETAILS. REFER STRUCTURAL ENGINEERS' DRAWINGS AND SPECIFICATIONS.
 - REFER TO STRUCTURAL ENGINEERS' DRAWINGS FOR DETAILS AND DIMENSIONS OF ALL STRUCTURAL COLUMNS. TO BE FULLY CO-ORDINATED AND CHECKED WITH ARCHITECTURAL DRAWINGS.
 - REFER TO MECHANICAL ENGINEERS' DRAWINGS FOR MECHANICAL EQUIPMENT AND SPECIFICATIONS AND DETAILS. LOCATIONS AND DIMENSIONS OF ALL FLOOR PENETRATIONS SHOWN ARE TO BE FULLY CO-ORDINATED AND CHECKED WITH MECHANICAL ENGINEERS' DRAWINGS.
 - LOCATIONS AND DIMENSIONS OF ALL FIRE SERVICE FLOOR PENETRATIONS TO BE FULLY CO-ORDINATED AND CHECKED WITH FIRE SERVICE ENGINEERS' DRAWINGS.
 - LOCATIONS AND DIMENSIONS OF ALL HYDRAULIC SERVICE FLOOR PENETRATIONS TO BE FULLY CO-ORDINATED AND CHECKED WITH HYDRAULIC ENGINEERS' DRAWINGS.
 - DIMENSIONS OF ALL PITS FOR TRAVELATORS, ESCALATORS & OTHER VOIDS SHALL BE CO-ORDINATED AND CHECKED WITH MANUFACTURER'S SPECIFICATION AND DIMENSIONS.
 - ALL LIFT TRAVELATOR & ESCALATOR SITES & DIMENSIONS ARE TO BE CHECKED AND CONFIRMED ONCE MANUFACTURER HAS BEEN CONFIRMED.
 - EQUIPMENT AND FURNITURE LAYOUT ON RETAIL LEVELS IS SHOWN INDICATIVE ONLY AT THIS STAGE. LAYOUT IS SUBJECT TO DESIGN AND CONFIRMATION BY IEKA SYSTEMS.



7 Young St, Neutral Bay
Sydney NSW 2089 AUSTRALIA
P +61 2 9909 3344
F +61 2 9909 3828
W www.lefflersimes.com.au

Level 2, 18 Oliver Lane
Melbourne VIC 3000 AUSTRALIA
P +61 3 9654 6344
F +61 3 9654 8244
E sjc@lefflersimes.com.au

ACH 001 043 992 ABN 39 001 043 992

CLIENT
IEKA TEMPE

PROJECT
Proposed Bulky Goods Development;
Princes Highway
Tempe, Sydney, NSW

DRAWING
Existing Ateco Building Floor Plans

DATE August 2009 SCALE 1:250 @ AO DRAWN ASH/CK
PROJECT No. 2725 DRAWING No. GA 211 ISSUE K