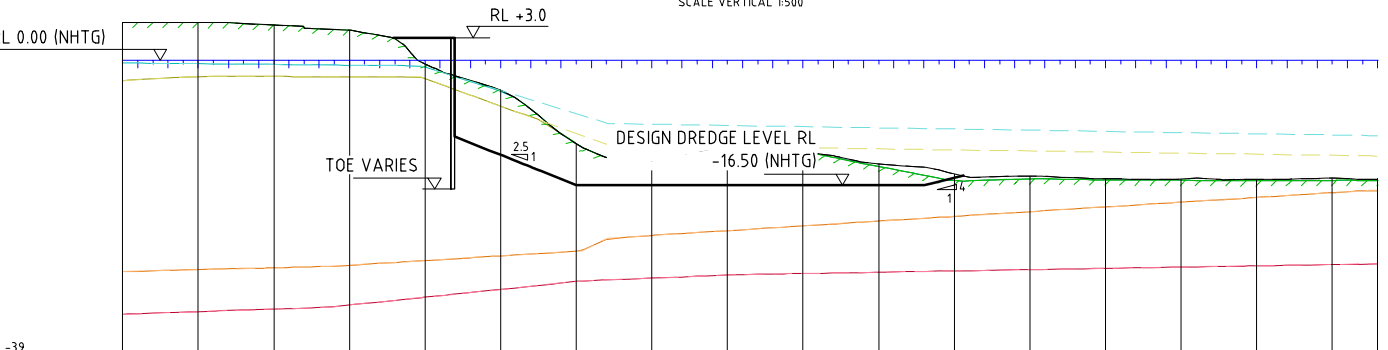


DATUM -39	DESIGN SURFACE	VOLUME SURF. (REF. GN-02)	FINES / SEDs (GEOT. TRIM)	HARBOUR MUD (MODIFIED)	SAND (MODIFIED)	STIFF CLAY (MODIFIED)	ROCK (MODIFIED)	CHAINAGE
		5.22	5.22	-0.01	-0.96	-23.72	-33.25	-60.00
		5.14	5.14	0.03	-0.43	-23.54	-32.88	-50.00
		5.02	5.02	0.06	-0.52	-23.95	-32.51	-40.00
	3.01	0.42	0.42	-0.47	-1.79	-23.24	-32.12	-30.00
	-8.48	-1.82	-1.82	-1.81	-3.79	-22.93	-31.69	-20.00
	-12.49	-3.49	-3.49	-3.53	-6.25	-22.05	-31.18	-10.00
	-16.49	-7.70	-7.70	-7.70	-8.70	-21.17	-30.55	0.00
	-16.50	-11.67	-11.67	-11.67	-11.67	-20.41	-29.83	10.00
	-16.50	-11.83	-11.83	-11.83	-13.22	-19.82	-29.47	20.00
	-16.50	-11.99	-12.40	-12.40	-13.52	-19.22	-29.14	30.00
	-16.50	-12.15	-14.98	-14.98	-14.98	-18.42	-28.81	40.00
	-16.50	-14.53	-15.88	-15.88	-15.88	-18.36	-28.48	50.00
	-16.50	-15.41	-15.66	-15.66	-15.66	-18.41	-28.15	60.00
	-16.50	-15.36	-15.81	-15.81	-15.81	-18.47	-27.81	70.00
	-16.50	-15.53	-15.98	-15.98	-15.98	-18.44	-27.48	80.00
	-16.50	-15.60	-15.90	-15.90	-15.90	-18.17	-27.15	90.00
	-16.50	-15.61	-15.84	-15.84	-15.84	-17.89	-26.82	100.00
	-16.50	-15.69	-15.80	-15.80	-15.80	-17.73	-26.62	106.01

KOORAGANG 1 - SECTION CH 100.00 CROSS SECTION

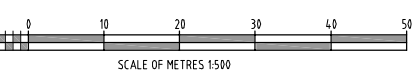
SCALE HORIZONTAL 1500  
SCALE VERTICAL 1500



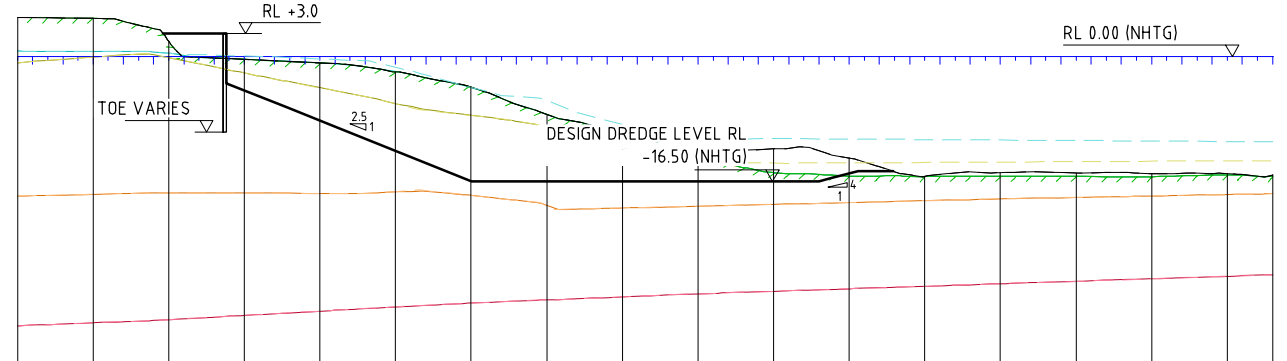
DATUM -39	DESIGN SURFACE	VOLUME SURF. (REF. GN-02)	FINES / SEDs (GEOT. TRIM)	HARBOUR MUD (MODIFIED)	SAND (MODIFIED)	STIFF CLAY (MODIFIED)	ROCK (MODIFIED)	CHAINAGE
		5.05	5.05	-0.31	-2.05	-27.91	-33.53	-60.00
		5.02	5.02	-0.41	-2.13	-27.66	-33.20	-50.00
		4.69	4.69	-0.51	-2.11	-27.41	-32.86	-40.00
	3.00	4.01	4.01	-0.61	-2.15	-27.06	-32.34	-30.00
	-12.49	-0.47	-0.47	-0.88	-2.38	-26.45	-31.30	-20.00
	-16.49	-3.90	-3.90	-4.07	-6.01	-25.83	-30.26	-10.00
	-16.50	-10.98	-10.98	-10.98	-10.98	-25.21	-29.22	0.00
	-16.50	-11.96	-11.96	-11.96	-11.96	-23.11	-28.77	10.00
	-16.50	-12.09	-12.09	-12.09	-12.09	-22.49	-28.37	20.00
	-16.50	-12.15	-12.19	-12.19	-12.19	-21.86	-28.16	30.00
	-16.50	-13.70	-14.02	-14.02	-14.02	-21.23	-27.99	40.00
	-16.50	-15.00	-15.86	-15.86	-15.86	-20.61	-27.82	50.00
	-16.50	-15.27	-15.64	-15.64	-15.64	-19.98	-27.65	60.00
	-16.50	-15.64	-15.80	-15.80	-15.80	-19.35	-27.49	70.00
	-16.50	-15.67	-15.83	-15.83	-15.83	-18.72	-27.32	80.00
	-16.50	-15.68	-15.90	-15.90	-15.90	-18.10	-27.15	90.00
	-16.50	-15.57	-15.84	-15.84	-15.84	-17.47	-26.98	100.00
	-16.50	-15.66	-15.86	-15.86	-15.86	-17.20	-26.88	106.01

KOORAGANG 1 - SECTION CH 25.00 CROSS SECTION

SCALE HORIZONTAL 1500  
SCALE VERTICAL 1500



SCALE OF METRES 1500



DATUM -41	DESIGN SURFACE	VOLUME SURF. (REF. GN-02)	FINES / SEDs (GEOT. TRIM)	HARBOUR MUD (MODIFIED)	SAND (MODIFIED)	STIFF CLAY (MODIFIED)	ROCK (MODIFIED)	CHAINAGE
		5.15	5.15	0.71	-0.82	-18.48	-35.62	-60.00
		5.04	5.04	0.65	-0.09	-18.24	-35.24	-50.00
		1.97	1.97	0.42	-0.16	-18.08	-34.80	-40.00
	3.01	-0.39	-0.39	-0.39	-2.18	-18.08	-34.24	-30.00
	-4.48	-0.86	-0.86	-0.86	-4.13	-18.10	-33.68	-20.00
	-12.48	-2.05	-2.05	-2.01	-6.23	-17.88	-33.12	-10.00
	-16.49	-4.04	-4.04	-4.10	-7.79	-18.38	-32.63	0.00
	-16.50	-7.69	-7.69	-7.69	-9.49	-19.68	-32.19	10.00
	-16.50	-10.54	-10.54	-10.54	-12.22	-20.04	-31.80	20.00
	-16.50	-11.47	-12.79	-12.79	-13.94	-19.80	-31.39	30.00
	-16.50	-12.19	-15.38	-15.38	-15.38	-19.56	-31.06	40.00
	-16.50	-13.43	-15.82	-15.82	-15.82	-19.32	-30.72	50.00
	-16.50	-15.85	-15.88	-15.88	-15.88	-19.08	-30.39	60.00
	-16.50	-15.37	-15.86	-15.86	-15.86	-18.84	-30.06	70.00
	-16.50	-15.42	-15.87	-15.87	-15.87	-18.64	-29.73	80.00
	-16.50	-15.48	-15.89	-15.89	-15.89	-18.45	-29.40	90.00
	-16.50	-15.50	-15.66	-15.66	-15.66	-18.27	-29.07	100.00
	-16.50	-15.70	-15.84	-15.84	-15.84	-18.15	-28.87	106.01

KOORAGANG 1 - SECTION CH 175.00 CROSS SECTION

SCALE HORIZONTAL 1500  
SCALE VERTICAL 1500

REV	DATE	REVISION DESCRIPTION	DRAWN	DRAFT CHK	DESIGNED	ENG CHK	APPROVED	CUSTOMER
B	30.07.10	ISSUED FOR CLIENT REVIEW	MLC	MLC	NPC	MP	-	-
A	20.7.10	ISSUED FOR INTERNAL REVIEW AND COMMENT	MLC	MLC	NPC	MP	-	-

INITIALS SHOWN IN THE ADJACENT ISSUE RECORDS INDICATE THE STAGES UNDERTAKEN IN THE DRAWING APPROVAL PROCESS. DRAWINGS ARE ONLY TO BE USED WHEN APPROVED BY WORLEY PARSONS AND THEN ONLY AS NOTED FOR DRG STATUS. THE ORIGINAL SIGNATURES CAN BE FOUND ON THE REVERSE SIDE OF THE ORIGINAL OF THE DRG REGISTER / TRANSMITTAL FORM No.5.2.2. HELD BY WORLEY PARSONS

Customer  
**NEWCASTLE PORT CORPORATION**  
Cnr Scott & Newcomen Sts  
NEWCASTLE 2300  
Ph (02) 4985 8222 Fax (02) 4985 8309



KEY  
Co-ordinate System:  
Integrated SurveyGrid  
Zone 56/1  
Central Meridian  
151 degrees East.

A1 SHEET SCALE AS SHOWN @ A1  
**WorleyParsons**  
resources & energy  
WorleyParsons Project No.  
301020-02685

Project Manager  
**WorleyParsons**  
resources & energy  
NEWCASTLE EAST  
8-14 TELFORD ST  
Ph (02) 4907 5300  
Fax (02) 4907 5333  
Copyright ©  
WorleyParsons Services Pty Ltd  
ABN 61 001 279 812

**NEWCASTLE PORT CORPORATION**  
CAPITAL DREDGING PROJECT  
KOORAGANG 1 AND WALSH POINT BERTHS  
1, 2 and 3 CROSS SECTIONS SHEET 1 of 4  
DRG No  
301020-02685-KW-04  
REV  
B