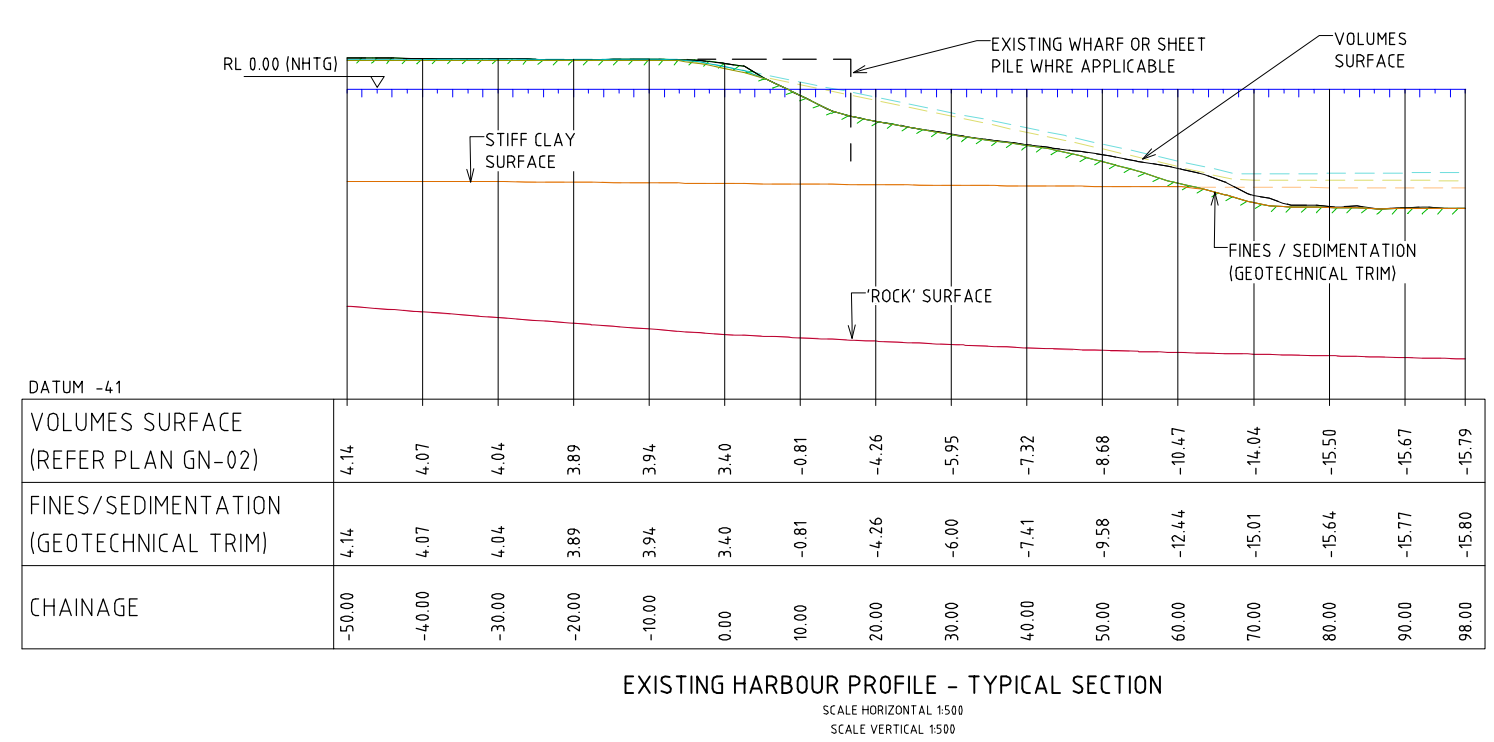


- NOTES**
- REFER TO PLAN 301020-02685-GN-01 FOR GENERAL NOTES
 - FOR SURVEY DETAILS AND NOTES REFER TO PLAN 301020-02685-GN-02
 - FOR FURTHER GEOTECHNICAL DETAILS AND NOTES REFER TO PLAN 301020-02685-GN-03

LEGEND

	BOUNDARY
	EMBANKMENT (ROCK)
	EMBANKMENT (OTHER)
	STORMWATER OUTLET INTO HARBOUR
	LAND (NOMINALLY ABOVE RL 0.0 (NHTG))
	EXISTING NAVIGATION DEPTH RL 0.0 to -5.0m (NHTG)
	EXISTING NAVIGATION DEPTH RL -5.0 to -10.0m (NHTG)
	EXISTING NAVIGATION DEPTH BELOW RL -10.0m (NHTG)
	EXISTING HARBOUR NAVIGATION AIDS
	NPC PORT CHANNEL BOUNDARY (MODIFIED FOR K8/K9)
	NAVIGATION AIDS / LEAD LINES
	EXISTING SHEET PILE WALL
	BORE HOLE AND REFERENCE

SCALE OF METRES 1:1500



NHTG TIDE CHART

DATUMS AND TIDAL DATA

Metres +2.50

+2.25	+2.103 HAT
+2.000	+1.629 MHWS
+1.75	+1.378 MHWN
+1.50	+1.010 AHD
+1.25	+1.001 MSL
0.00 AHD	+0.624 MLWN
+0.75	+0.373 MLWS
+0.50	+0.120 ISLW
+0.25	+0.053 LAT
0.000	

Chart Datum (C.D.)
ALL LEVELS CHART DATUM
A.H.D. = AUSTRALIAN HEIGHT DATUM

REV	DATE	REVISION DESCRIPTION	DRAWN	DRAFT CHK	DESIGNED	ENG CHK	APPROVED	CUSTOMER
B	30.07.10	ISSUED FOR CLIENT REVIEW	MLC	MLC	NPC	MP	-	-
A	20.7.10	ISSUED FOR INTERNAL REVIEW AND COMMENT	MLC	MLC	NPC	MP	-	-

INITIALS SHOWN IN THE ADJACENT ISSUE RECORDS INDICATE THE STAGES UNDERTAKEN IN THE DRAWING APPROVAL PROCESS. DRAWINGS ARE ONLY TO BE USED WHEN APPROVED BY WORLEY PARSONS AND THEN ONLY AS NOTED FOR DRG STATUS. THE ORIGINAL SIGNATURES CAN BE FOUND ON THE REVERSE SIDE OF THE ORIGINAL OF THE DRG REGISTER/TRANSMITTAL FORM No.5.2.2. HELD BY WORLEY PARSONS

Customer
NEWCASTLE PORT CORPORATION
Cnr Scott & Newcomen Sts
NEWCASTLE 2300
Ph (02) 4985 8222 Fax (02) 4985 8309



KEY
Co-ordinate System:
Integrated SurveyGrid
Zone 56/1
Central Meridian
151 degrees East.

A1 SHEET SCALE AS SHOWN @ A1
zero harm
Leadership
No Incidents
Safe Behaviour
WORLEY PARSONS PROJECT No.
301020-02685

Project Manager
WorleyParsons
resources & energy
NEWCASTLE EAST
8-14 TELFORD ST
Ph: (02) 4907 5300
Fax: (02) 4907 5333
Copyright ©
WorleyParsons Services Pty Ltd
ABN 61 001 279 812

NEWCASTLE PORT CORPORATION
CAPITAL DREDGING PROJECT
MAYFIELD BERTHS 1 and 2
EXISTING SITE CONDITIONS
DRG No
301020-02685-ME-01
REV
B