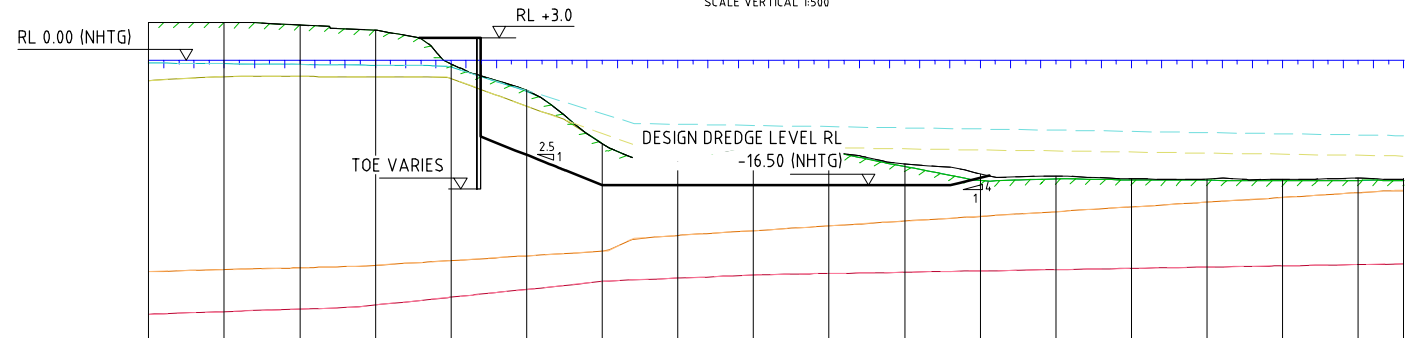


DATUM -39	DESIGN SURFACE	VOLUME SURF. (REF. GN-02)	FINES / SEDs (GEOT. TRIM)	HARBOUR MUD (MODIFIED)	SAND (MODIFIED)	STIFF CLAY (MODIFIED)	ROCK (MODIFIED)	CHAINAGE
		5.22	5.22	-0.01	-0.96	-23.72	-33.25	-60.00
		5.14	5.14	0.03	-0.43	-23.54	-32.88	-50.00
		5.02	5.02	0.06	-0.52	-23.35	-32.51	-40.00
		0.42	0.42	-0.47	-1.79	-23.24	-32.12	-30.00
		-1.82	-1.82	-1.81	-3.79	-22.93	-31.69	-20.00
		-3.49	-3.49	-3.53	-6.25	-22.05	-31.18	-10.00
		-7.70	-7.70	-7.70	-8.70	-21.17	-30.55	0.00
		-11.67	-11.67	-11.67	-11.67	-20.41	-29.83	10.00
		-11.83	-11.83	-11.83	-13.22	-19.82	-29.47	20.00
		-11.99	-11.99	-12.60	-13.52	-19.22	-29.14	30.00
		-12.15	-12.15	-14.98	-14.98	-18.42	-28.81	40.00
		-14.53	-14.53	-15.88	-15.88	-18.36	-28.48	50.00
		-15.41	-15.41	-15.66	-15.66	-18.41	-28.15	60.00
		-15.36	-15.36	-15.81	-15.81	-18.47	-27.81	70.00
		-15.53	-15.53	-15.98	-15.98	-18.44	-27.48	80.00
		-15.60	-15.60	-15.90	-15.90	-18.17	-27.15	90.00
		-15.61	-15.61	-15.84	-15.84	-17.89	-26.82	100.00
		-15.69	-15.69	-15.80	-15.80	-17.73	-26.62	106.01

KOORAGANG 1 - SECTION CH 100.00 CROSS SECTION

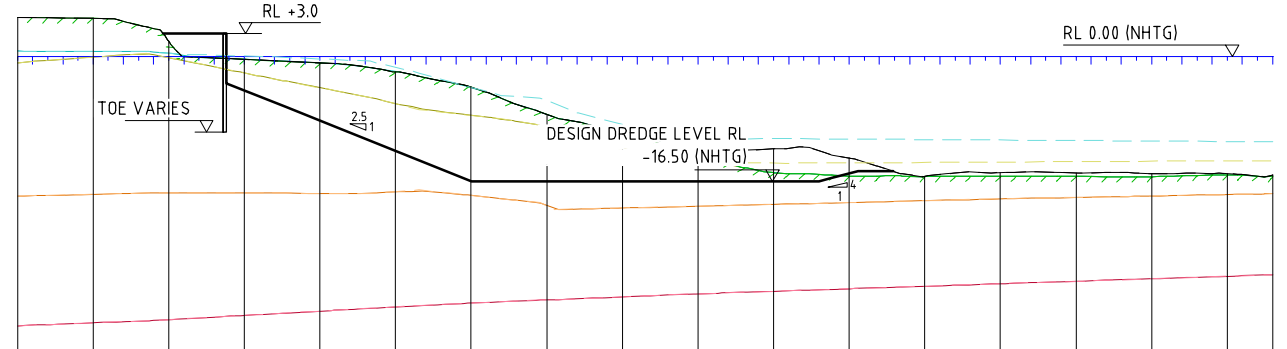
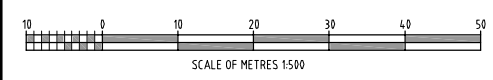
SCALE HORIZONTAL 1500
SCALE VERTICAL 1500



DATUM -39	DESIGN SURFACE	VOLUME SURF. (REF. GN-02)	FINES / SEDs (GEOT. TRIM)	HARBOUR MUD (MODIFIED)	SAND (MODIFIED)	STIFF CLAY (MODIFIED)	ROCK (MODIFIED)	CHAINAGE
		5.05	5.05	-0.31	-2.05	-27.91	-33.53	-60.00
		5.02	5.02	-0.41	-2.13	-27.66	-33.20	-50.00
		4.69	4.69	-0.51	-2.11	-27.41	-32.86	-40.00
		4.01	4.01	-0.61	-2.15	-27.06	-32.34	-30.00
		-0.47	-0.47	-0.88	-2.38	-26.45	-31.30	-20.00
		-3.90	-3.90	-4.07	-6.01	-25.83	-30.26	-10.00
		-10.98	-10.98	-10.98	-10.98	-25.21	-29.22	0.00
		-11.96	-11.96	-11.96	-11.96	-23.11	-28.77	10.00
		-12.09	-12.09	-12.09	-12.09	-22.49	-28.37	20.00
		-12.15	-12.15	-12.19	-12.19	-21.86	-28.16	30.00
		-13.70	-13.70	-14.02	-14.02	-21.23	-27.99	40.00
		-15.00	-15.00	-15.86	-15.86	-20.61	-27.82	50.00
		-15.27	-15.27	-15.64	-15.64	-19.98	-27.65	60.00
		-15.64	-15.64	-15.80	-15.80	-19.35	-27.49	70.00
		-15.67	-15.67	-15.83	-15.83	-18.72	-27.32	80.00
		-15.68	-15.68	-15.90	-15.90	-18.10	-27.15	90.00
		-15.57	-15.57	-15.84	-15.84	-17.47	-26.98	100.00
		-15.66	-15.66	-15.86	-15.86	-17.20	-26.88	106.01

KOORAGANG 1 - SECTION CH 25.00 CROSS SECTION

SCALE HORIZONTAL 1500
SCALE VERTICAL 1500



DATUM -41	DESIGN SURFACE	VOLUME SURF. (REF. GN-02)	FINES / SEDs (GEOT. TRIM)	HARBOUR MUD (MODIFIED)	SAND (MODIFIED)	STIFF CLAY (MODIFIED)	ROCK (MODIFIED)	CHAINAGE
		3.01	3.01	0.71	-0.82	-18.48	-35.62	-60.00
		5.04	5.04	0.65	-0.09	-18.24	-35.24	-50.00
		1.97	1.97	0.42	-0.16	-18.08	-34.80	-40.00
		-0.39	-0.39	-0.39	-2.18	-18.08	-34.24	-30.00
		-0.86	-0.86	-0.86	-4.13	-18.10	-33.68	-20.00
		-2.05	-2.05	-2.01	-6.23	-17.88	-33.12	-10.00
		-4.04	-4.04	-4.10	-7.79	-18.38	-32.63	0.00
		-7.69	-7.69	-7.69	-9.49	-19.68	-32.19	10.00
		-10.54	-10.54	-10.54	-12.22	-20.04	-31.80	20.00
		-11.47	-11.47	-12.79	-13.94	-19.80	-31.39	30.00
		-12.19	-12.19	-15.38	-15.38	-19.56	-31.06	40.00
		-13.43	-13.43	-15.82	-15.82	-19.32	-30.72	50.00
		-15.85	-15.85	-15.88	-15.88	-19.08	-30.39	60.00
		-15.37	-15.37	-15.86	-15.86	-18.84	-30.06	70.00
		-15.42	-15.42	-15.87	-15.87	-18.64	-29.73	80.00
		-15.48	-15.48	-15.89	-15.89	-18.45	-29.40	90.00
		-15.50	-15.50	-15.66	-15.66	-18.27	-29.07	100.00
		-15.84	-15.84	-15.84	-15.84	-18.15	-28.87	106.01

KOORAGANG 1 - SECTION CH 175.00 CROSS SECTION

SCALE HORIZONTAL 1500
SCALE VERTICAL 1500

REV	DATE	REVISION DESCRIPTION	DRAWN	DRAFT CHK	DESIGNED	ENG CHK	APPROVED	CUSTOMER
B	30.07.10	ISSUED FOR CLIENT REVIEW	MLC	MLC	NPC	MP	-	-
A	20.7.10	ISSUED FOR INTERNAL REVIEW AND COMMENT	MLC	MLC	NPC	MP	-	-

INITIALS SHOWN IN THE ADJACENT ISSUE RECORDS INDICATE THE STAGES UNDERTAKEN IN THE DRAWING APPROVAL PROCESS. DRAWINGS ARE ONLY TO BE USED WHEN APPROVED BY WORLEY PARSONS AND THEN ONLY AS NOTED FOR DRG STATUS. THE ORIGINAL SIGNATURES CAN BE FOUND ON THE REVERSE SIDE OF THE ORIGINAL OF THE DRG REGISTER TRANSMITTAL FORM No.5.2.2. HELD BY WORLEY PARSONS

Customer
NEWCASTLE PORT CORPORATION
Cnr Scott & Newcomen Sts
NEWCASTLE 2300
Ph (02) 4985 8222 Fax (02) 4985 8309



KEY
Co-ordinate System:
Integrated SurveyGrid
Zone 56/1
Central Meridian
151 degrees East.

A1 SHEET SCALE AS SHOWN @ A1
WorleyParsons
resources & energy
WORLEY PARSONS PROJECT No.
301020-02685

Project Manager
WorleyParsons
resources & energy
NEWCASTLE EAST
8-14 TELFORD ST
Ph: (02) 4907 5300
Fax: (02) 4907 5333
Copyright ©
WorleyParsons Services Pty Ltd
ABN 61 001 279 812

NEWCASTLE PORT CORPORATION
CAPITAL DREDGING PROJECT
KOORAGANG BERTH 1
CROSS SECTIONS SHEET 1 of 1
DRG No
301020-02685-K1-04
REV
B