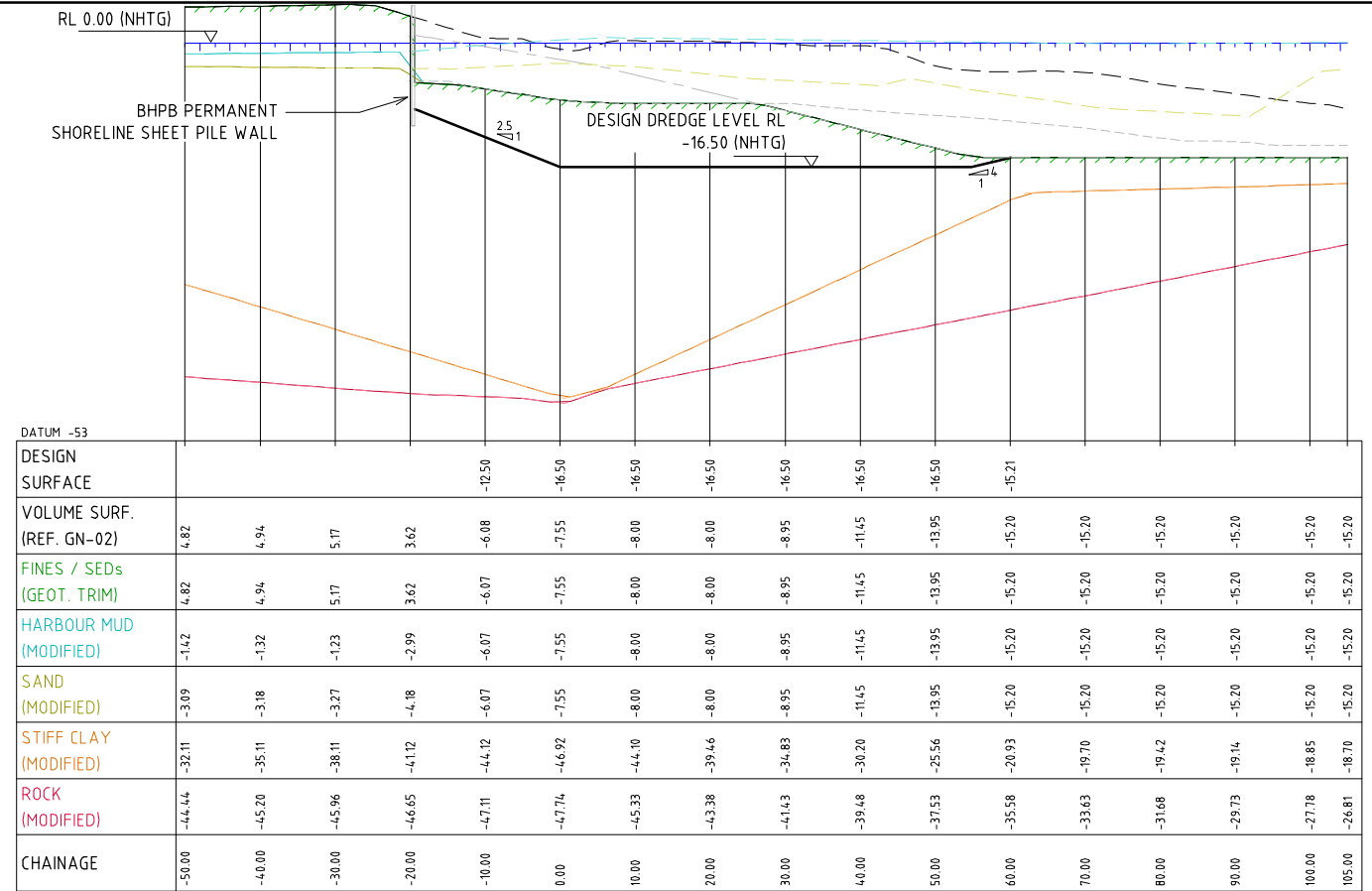
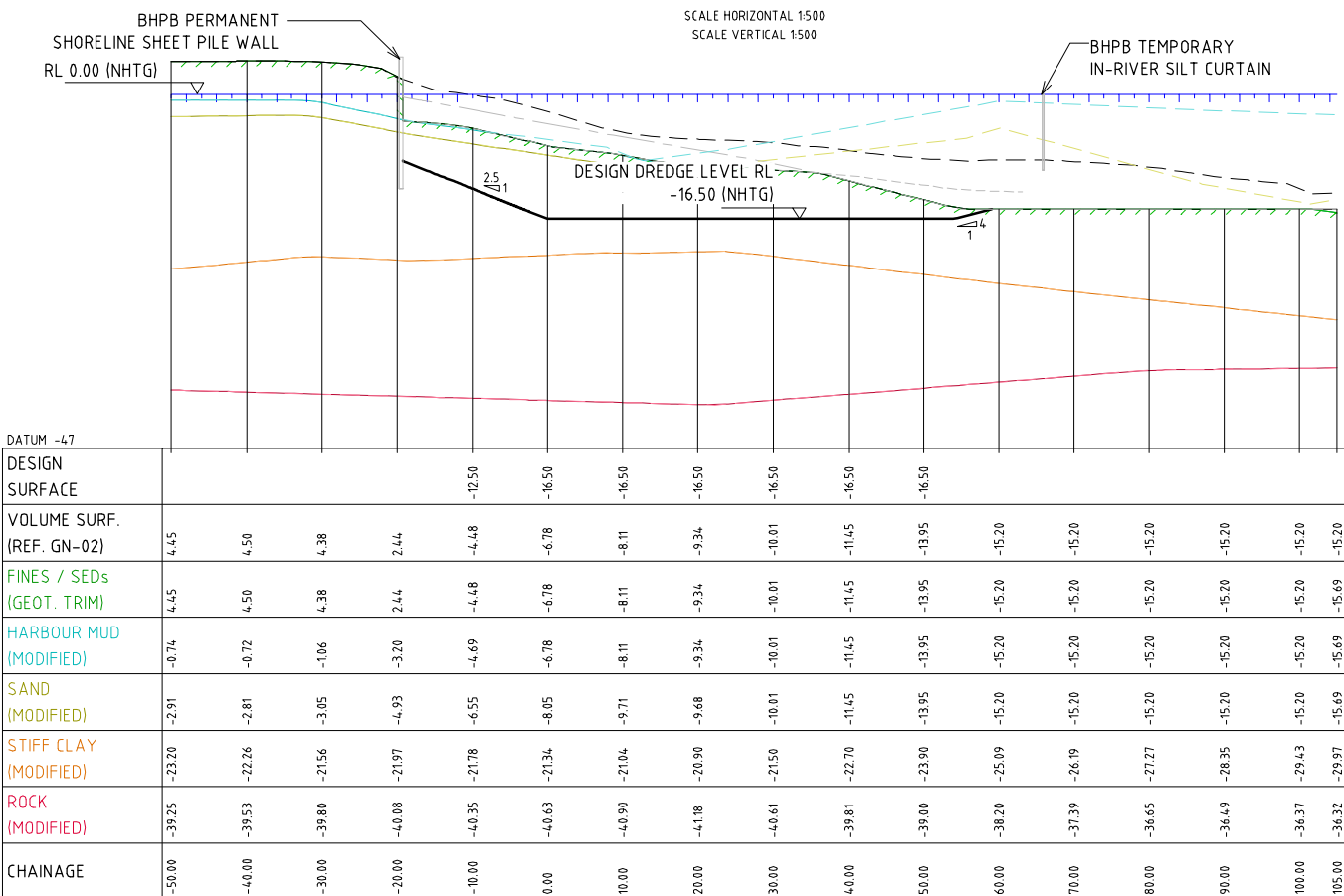


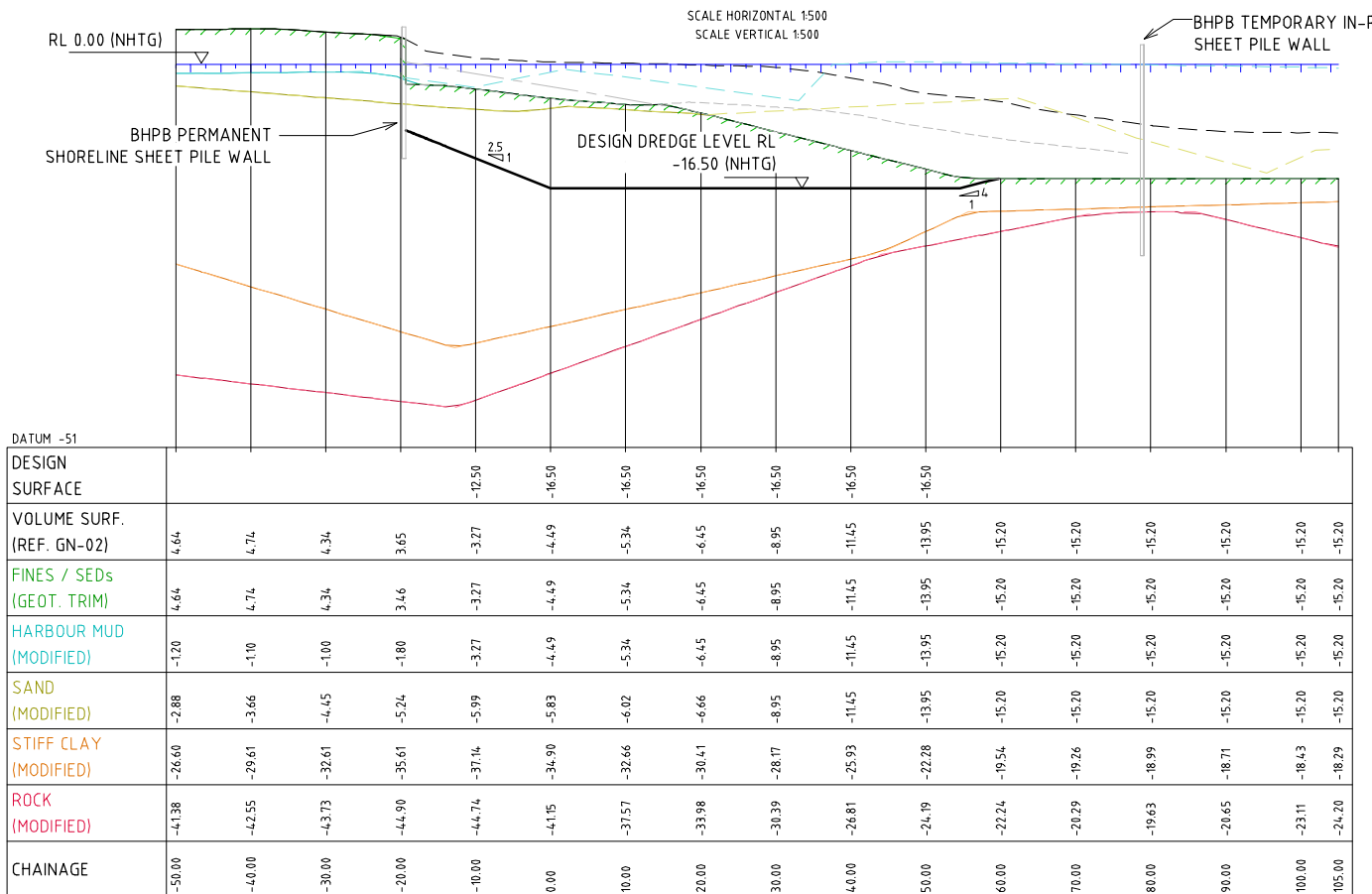
MAYFIELD 5 - SECTION CH 115.00 CROSS SECTION



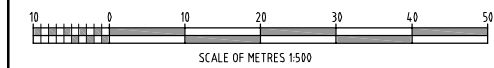
MAYFIELD 5 - SECTION CH 275.00 CROSS SECTION



MAYFIELD 5 - SECTION CH 35.00 CROSS SECTION



MAYFIELD 5 - SECTION CH 195.00 CROSS SECTION



REV	DATE	REVISION DESCRIPTION	DRAWN	DRAFT CHK	DESIGNED	ENG CHK	APPROVED	CUSTOMER
B	30.07.10	ISSUED FOR CLIENT REVIEW	MLC	MLC	NPC	MP	-	-
A	20.7.10	ISSUED FOR INTERNAL REVIEW AND COMMENT	MLC	MLC	NPC	MP	-	-

INITIALS SHOWN IN THE ADJACENT ISSUE RECORDS INDICATE THE STAGES UNDERTAKEN IN THE DRAWING APPROVAL PROCESS. DRAWINGS ARE ONLY TO BE USED WHEN APPROVED BY WORLEY PARSONS AND THEN ONLY AS NOTED FOR DRG STATUS. THE ORIGINAL SIGNATURES CAN BE FOUND ON THE REVERSE SIDE OF THE ORIGINAL OF THE DRG REGISTER/TRANSMITTAL FORM No.5.2.2. HELD BY WORLEY PARSONS.

Customer
NEWCASTLE PORT CORPORATION
 Cnr Scott & Newcomen Sts
 NEWCASTLE 2300
 Ph (02) 4985 8222 Fax (02) 4985 8309



KEY
 Co-ordinate System:
 Integrated SurveyGrid
 Zone 56/1
 Central Meridian
 151 degrees East.

A1 SHEET SCALE AS SHOWN @ A1

 WORLEY PARSONS PROJECT No.
 301020-02685

Project Manager

 Copyright ©
 WorleyParsons Services Pty Ltd
 ABN 61 001 279 812

NEWCASTLE PORT CORPORATION
CAPITAL DREDGING PROJECT
MAYFIELD BERTH 5
CROSS SECTIONS SHEET 1 of 1
 DRG No
 301020-02685-M5-04
 REV
 B