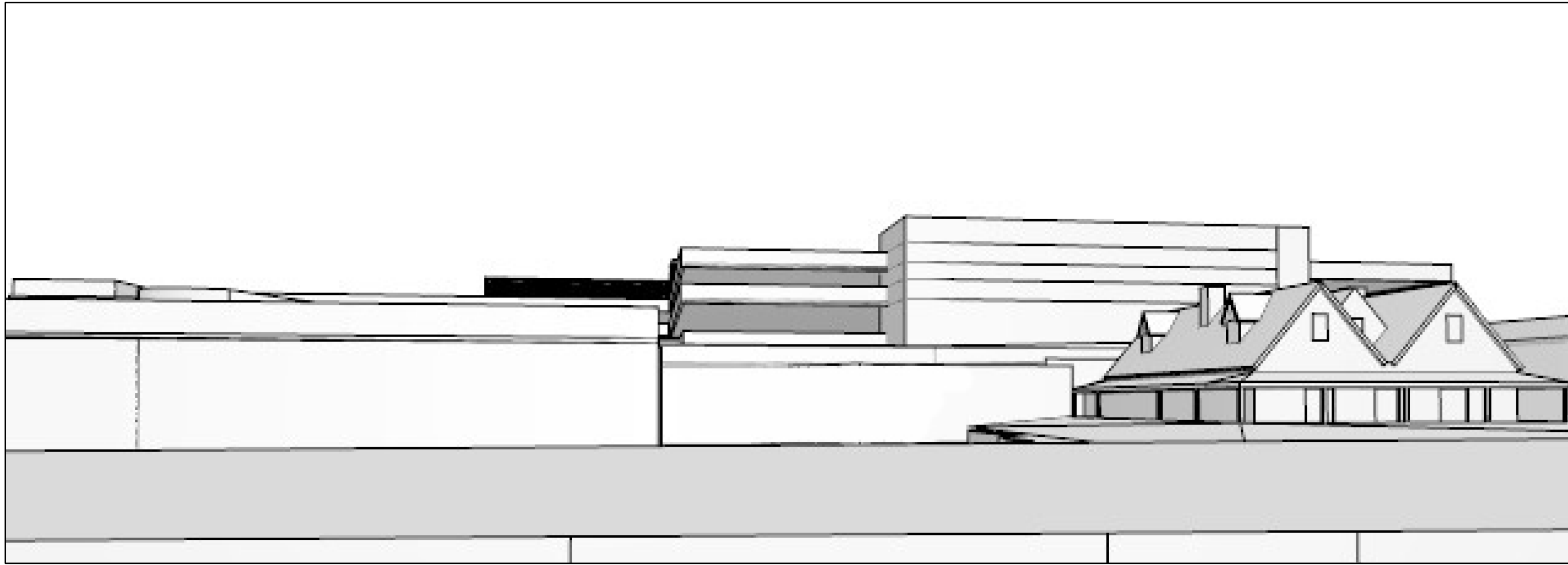


Current View

Proposed Height Lines

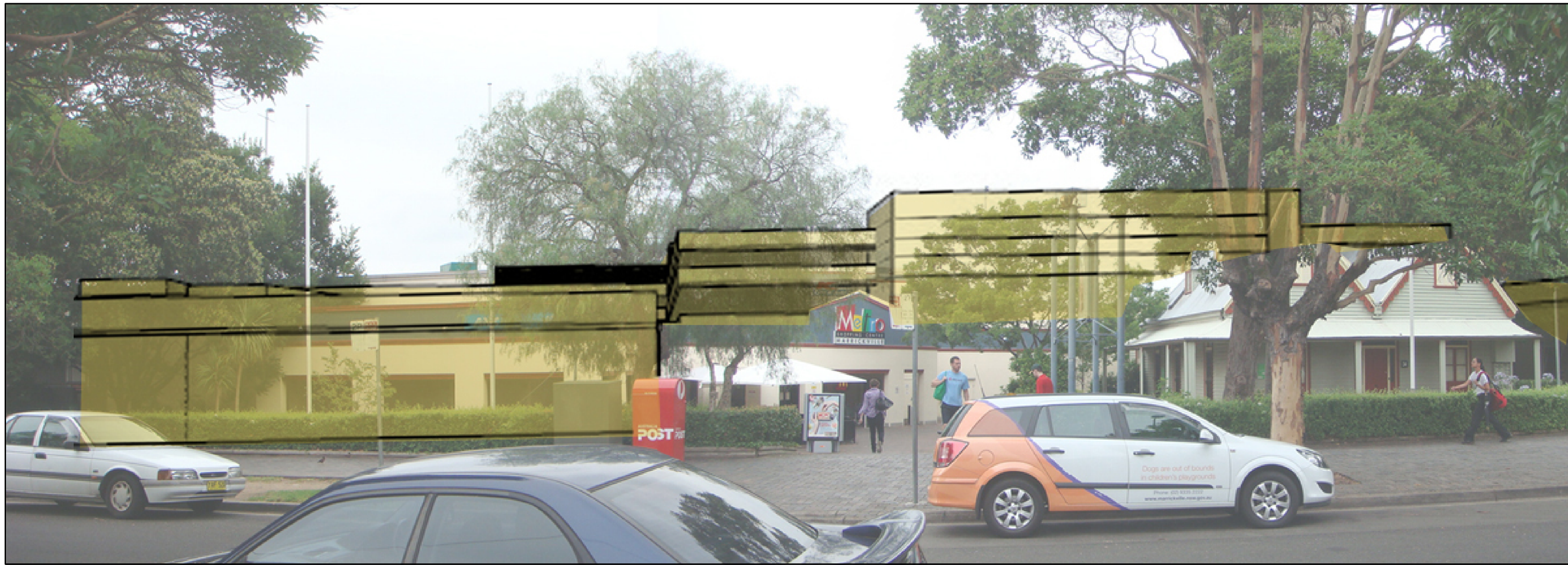
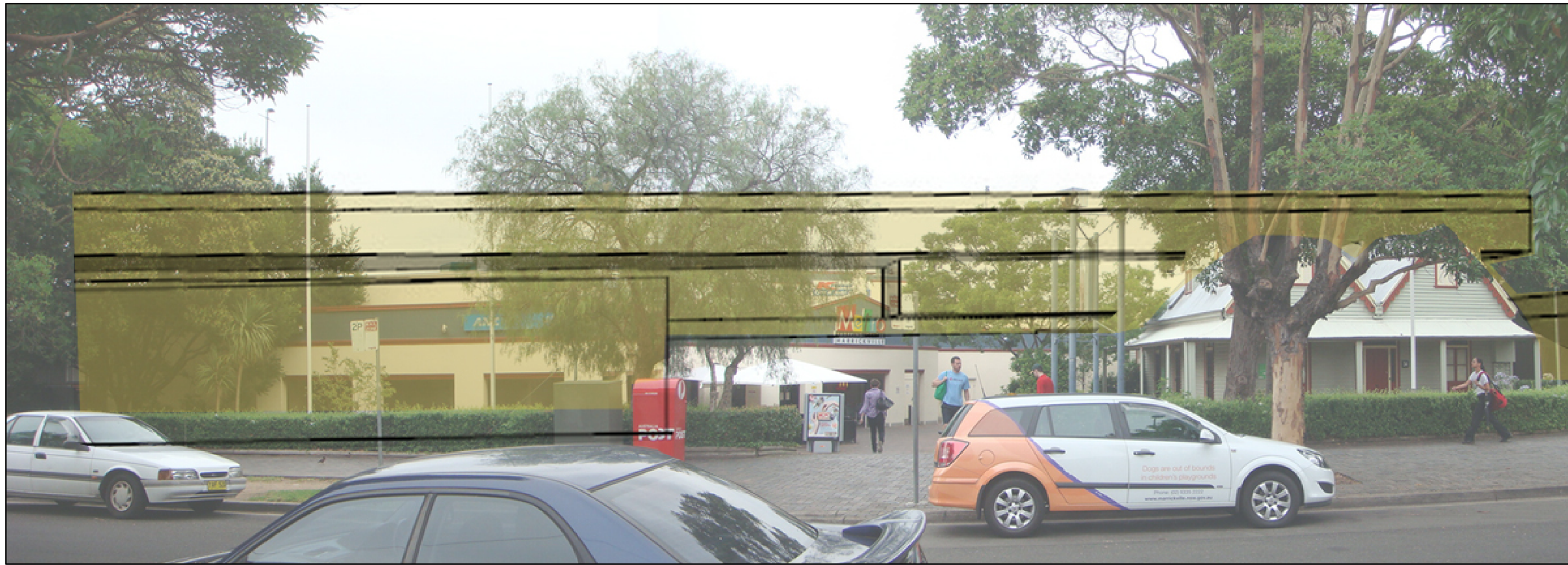


May Scheme



November Scheme

Photo Montage



Victoria Road

DISCLAIMER:  
PHOTO MATCH  
IS APPROXIMATE

01	PPR - ADDITIONAL	22.12.10
Rev.	Item Revision Description	Date
<b>Project Manager</b> <b>Bovis Lend Lease</b> Bovis Lend Lease Pty. Limited ABN 97 000 998 162 30 The Bond 30 Hickson Road Millsers Point NSW 2000		
<b>Architect</b> <b>Lend Lease design</b> 30 The Bond 30 Hickson Road Millsers Point NSW 2000		
<b>Urban Planners</b> <b>URBIS</b> Ph: +612 8233 9900 Fax: +612 8233 9966 Level 21, 321 Kent Street Sydney NSW 2000		
<b>Landscape Architect</b> <b>SITE IMAGE</b> Ph: +612 9698 2899 Fax: +612 9698 2877 24-40 Bowen Street Alexandria NSW 2015		
<b>Client</b> <b>AMP capital INVESTORS</b>		
<b>Project</b> <b>Metro MARRICVILLE</b>		
<b>Title</b> PHOTO MONTAGE VICTORIA ROAD		
<b>Scale</b> NTS		
Drawn By	Date	Purpose
Approved By	Date	
Project Number : Drawing Number		Revision
Prev: 160496:EA029		01