











MILL HOUSE

1

The Mill House has been identified and listed by Marrickville City Council as heritage item on the councils LEP.



PEDESTRIAN LINK TO

2

This section the heritage precinct has well established street trees and a brick footpath. The paved brick footpath laid in a heringbone pattern is part of the heritage listed paving of Bourne Street, Juliette Street and Victoria Road which was laid as part of a depression relief scheme in the 1930s.



HERITAGE FIG TREE

5

The existing fig tree has been listed with council as a heritage item within the LEP and as such is required to be retained and protected.



ACTIVATED SHOP FRONT

3

The existing planting is comprised of a combination of hedges, shrub, accent and tree planting and forms together to create the pedestrian movements and open space uses.



LEVEL CHANGE

6

The level differences between the Mill House and the shopping centre has allowed for the separation between the two and a reduced level of general pedestrian movement to the Mill House.



SIGNAGE POLES

4

To assist with the activation of the shopping center from the street signage has been erected within the landscape zone to create visual connection.



EDGING

7

Poor quality edging and general landscape maintenance has resulted in the pedestrian movements causing damage to the existing landscape and general appearance to the heritage precinct.





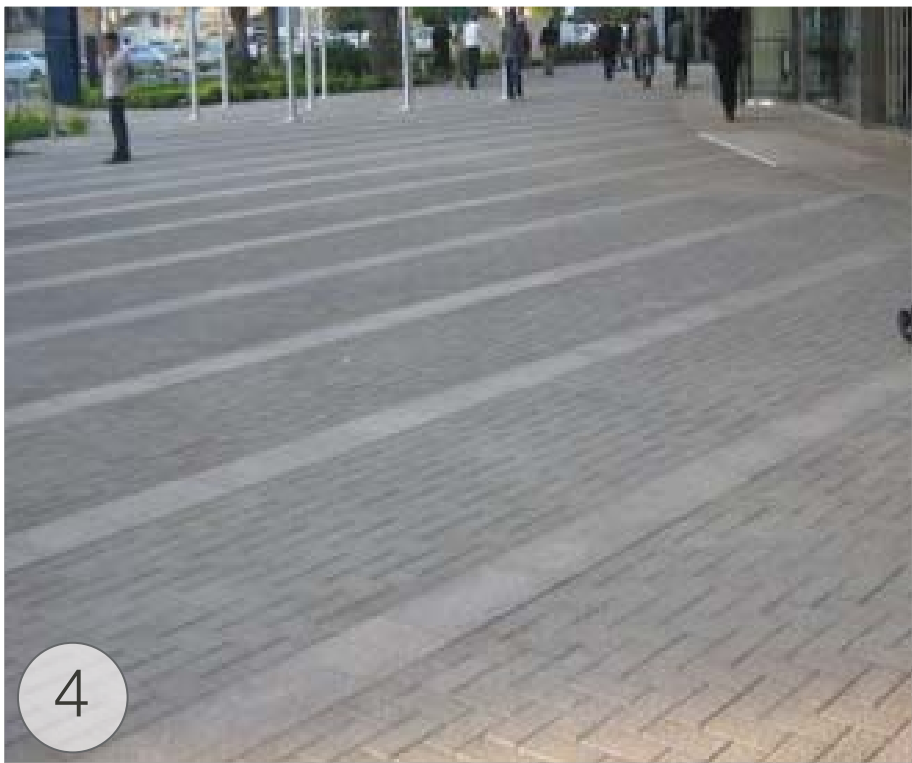
Sitting steps are proposed to flank the main access line into the centre providing a passive location for the visitors to meet and rest. The hedge line that creates a separation between the Mill House and the civic place can be removed to allow for a direct line of connection.



To assist with the directional control of the pedestrian traffic and the level change from the streetscape this raised planter has been proposed for the entry to the civic place. Finishing at sitting height on the lower side of the ramp, it also provides a plinth for a piece of public art and seating amenity for visitors.



Proposed location for public art that may have interpretative components to the history and heritage of the site – artwork could also be a community based project.



The existing pavement is proposed to be re-laid with feature banding throughout the bodies to break up the expanse of the pavement.



Accent and low level shrub planting is proposed to the western side of the Mill House to improve the visual aesthetics of the space and provide amenity for users.



Outdoor furniture is proposed to the refurbished lawn and garden area to provide amenity to the users.



Outdoor seating area to be provided along the sides of the civic place to assist in activating the space. The new proposed seating to the south of the plaza may also flow up onto the western side of the Mill House.



To provide a space for semi active / passive recreation on the northern end of the centre this refurbished lawn area is proposed. A low level line of hedge and accent planting is proposed to the site boundary for demarcation and safety for children playing in this space.





VICTORIA ROAD ENTRY WITH HERITAGE SCULPTURE



AERIAL VIEW OF CIVIC PLACE



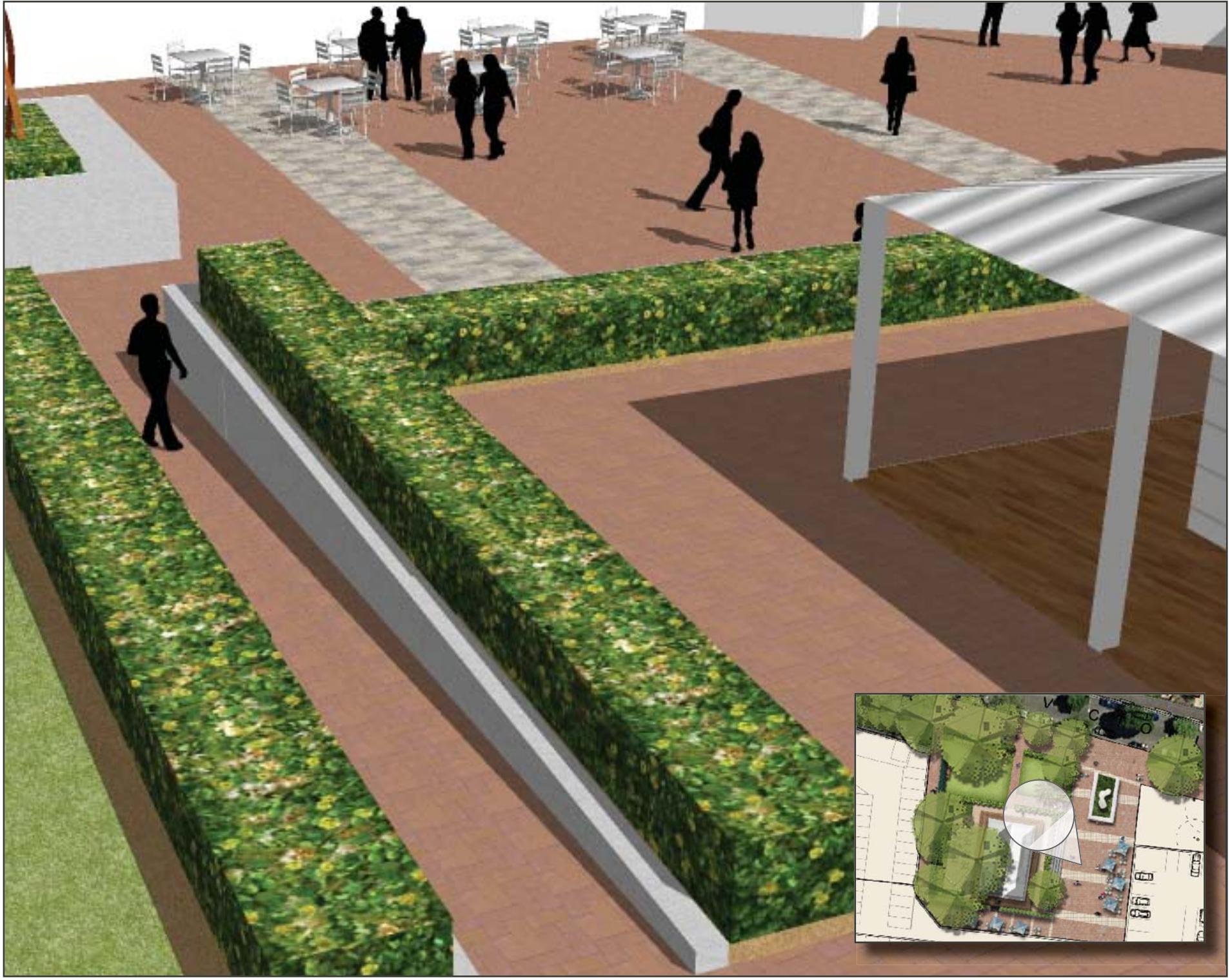
FEATURE BANDING WITHIN EXISTING PAVING



SHADE TOLERANT GARDEN PLANTING WITH SEATING AREA



SEATING STEPS



DISABLED ACCESS RAMP FROM HERITAGE BUILDING TO SHOPPING



KEY

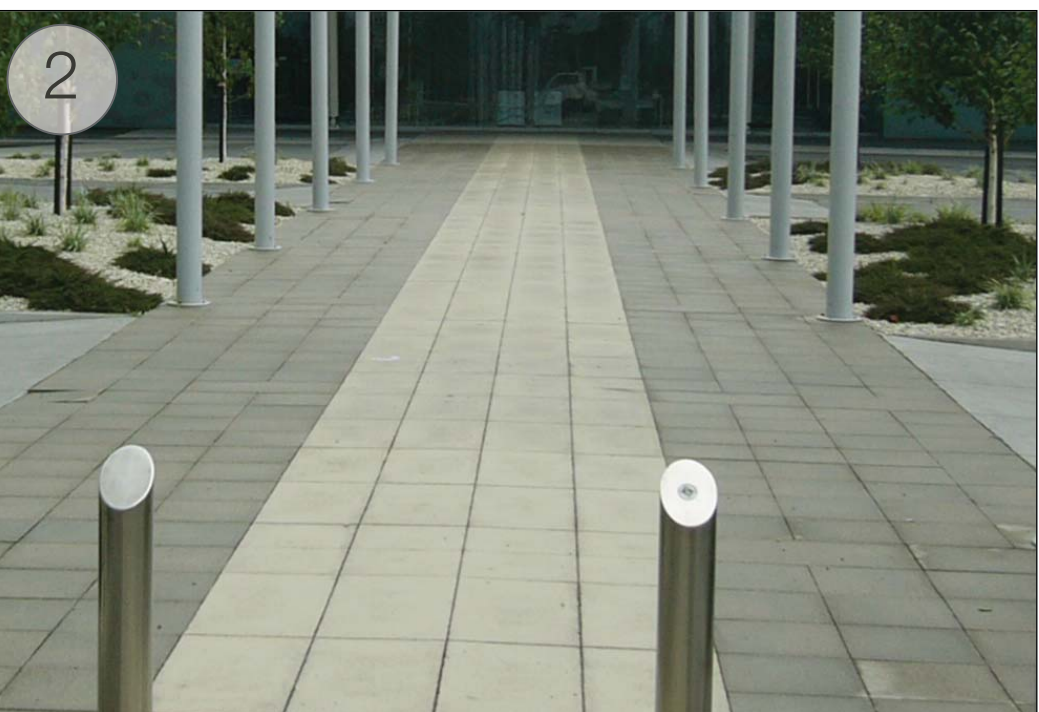




To reduce the visual dominance of the road and to assist with the general flow of Smidmore Street, the combination of a raised crossing, roll back kerbs and new paving to both sides of the road are to be used.



To continue the paving design from Victoria Road, it is to be continued through this section of the landscape to enhance and assist with the pedestrian link between the two centres.



The activation of Smidmore Street is not only to be through the retail connection to the streetscape but also through outdoor cafe seating to the southern side of the street to maximise the solar access.



The existing trees along Smidmore Street are to be retained and protected. As part of the general landscape works the paving is to have banding that define the surrounds of the tree pits.



Along the more pedestrian used areas of Smidmore Street bollards are to be installed to improved pedestrian safety. They will also assist with the general security to the centre.



Bike racks have been proposed at all of the visitor's entry point to the centre. On Smidmore Street there are 11 double bike racks that are proposed to accommodate for 22 bikes.

