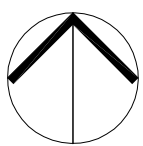


# WEST ELEVATION

## SYDNEY HERITAGE FLEET BASE - Preliminary Environmental Assessment

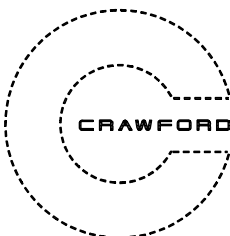
BANK STREET - PYRMONT - LOT 19 and LOT 20 - D.P.803159  
© CRAWFORD ARCHITECTS PTY LIMITED 2010 Suite 100, Jones Bay Wharf, Pirrama Road, Pyrmont NSW 2009 T 02 9660 3644 F 02 9660 3622 ABN 56 120 779 106



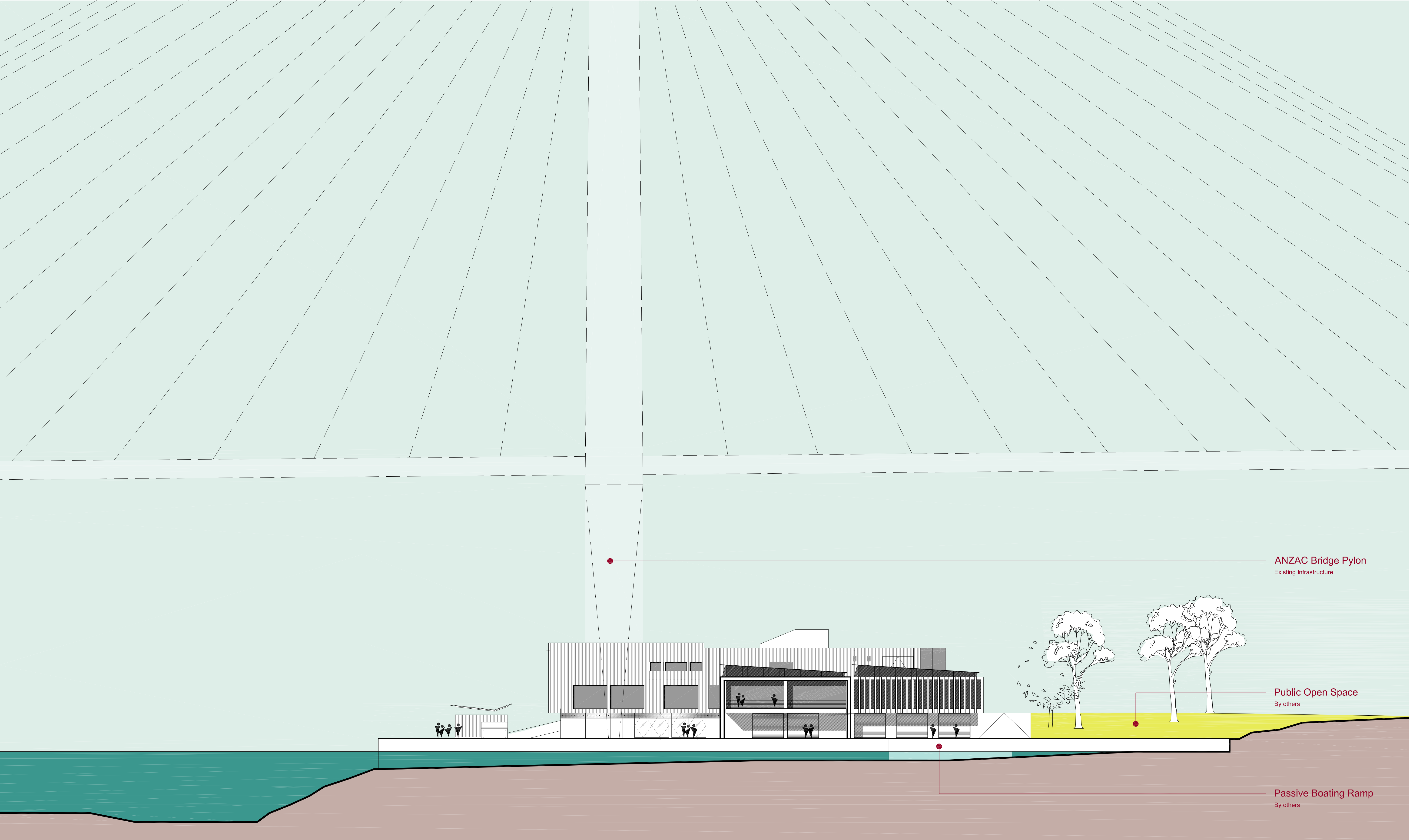
ELEVATIONS - WATER FRONT  
SK31 - EX 2010.12.09

Scale 1:200 @ A1

Date Sep 2010



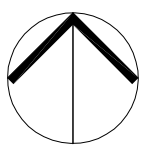
Project No 0811



# SOUTH ELEVATION

## SYDNEY HERITAGE FLEET BASE - Preliminary Environmental Assessment

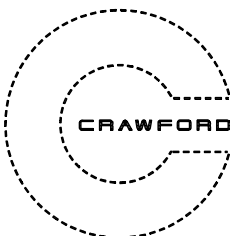
BANK STREET - PYRMONT - LOT 19 and LOT 20 - D.P.803159  
© CRAWFORD ARCHITECTS PTY LIMITED 2010 Suite 100, Jones Bay Wharf, Pirrama Road, Pyrmont NSW 2009 T 02 9660 3644 F 02 9660 3622 ABN 56 120 779 106



ELEVATIONS SOUTH  
SK32 - B 2010.12.06

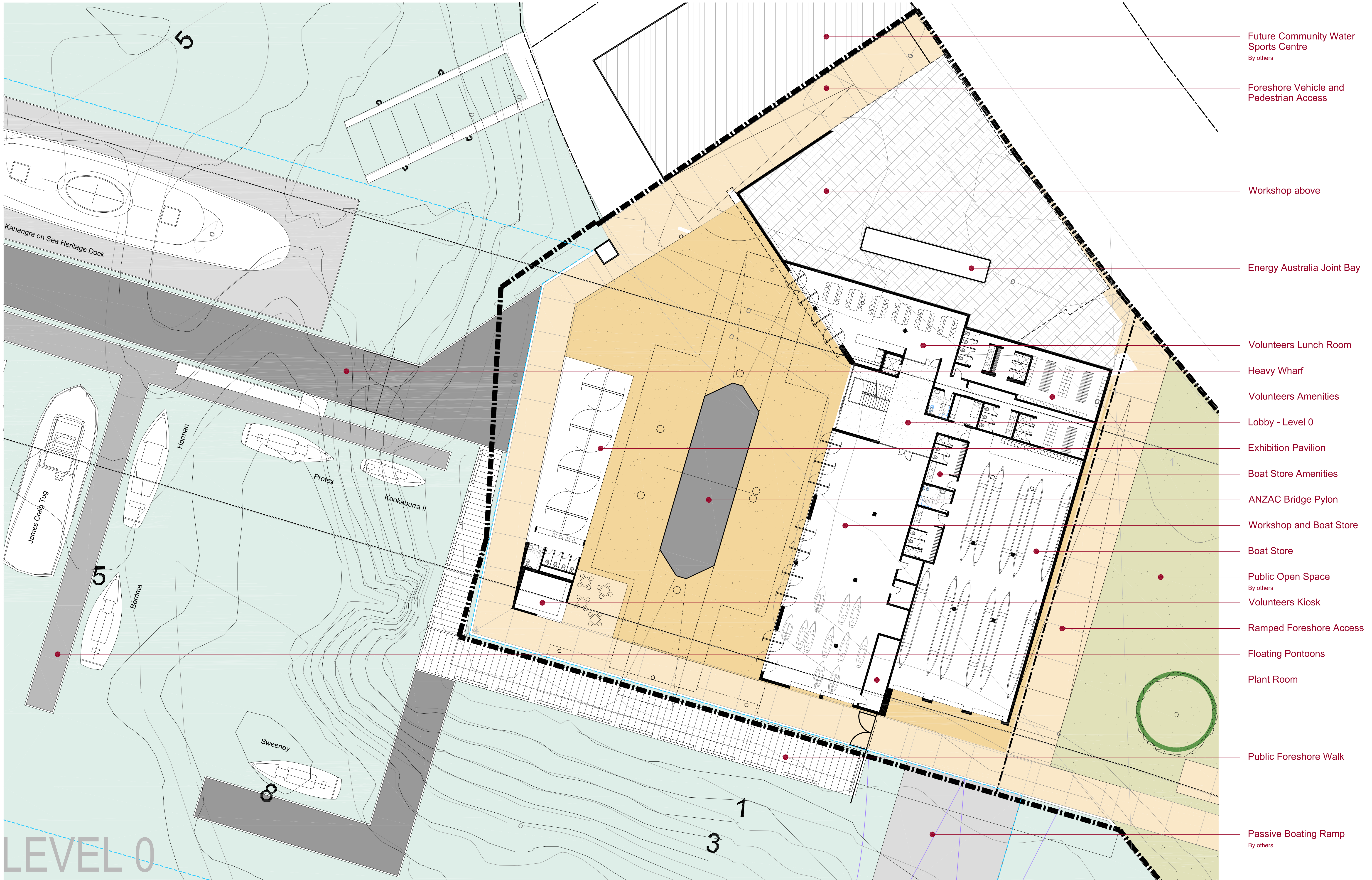
Scale 1:200 @ A1

Date Sep 2010

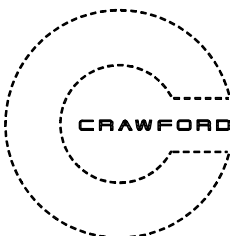
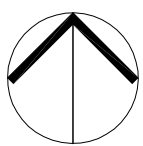


Project No 0811

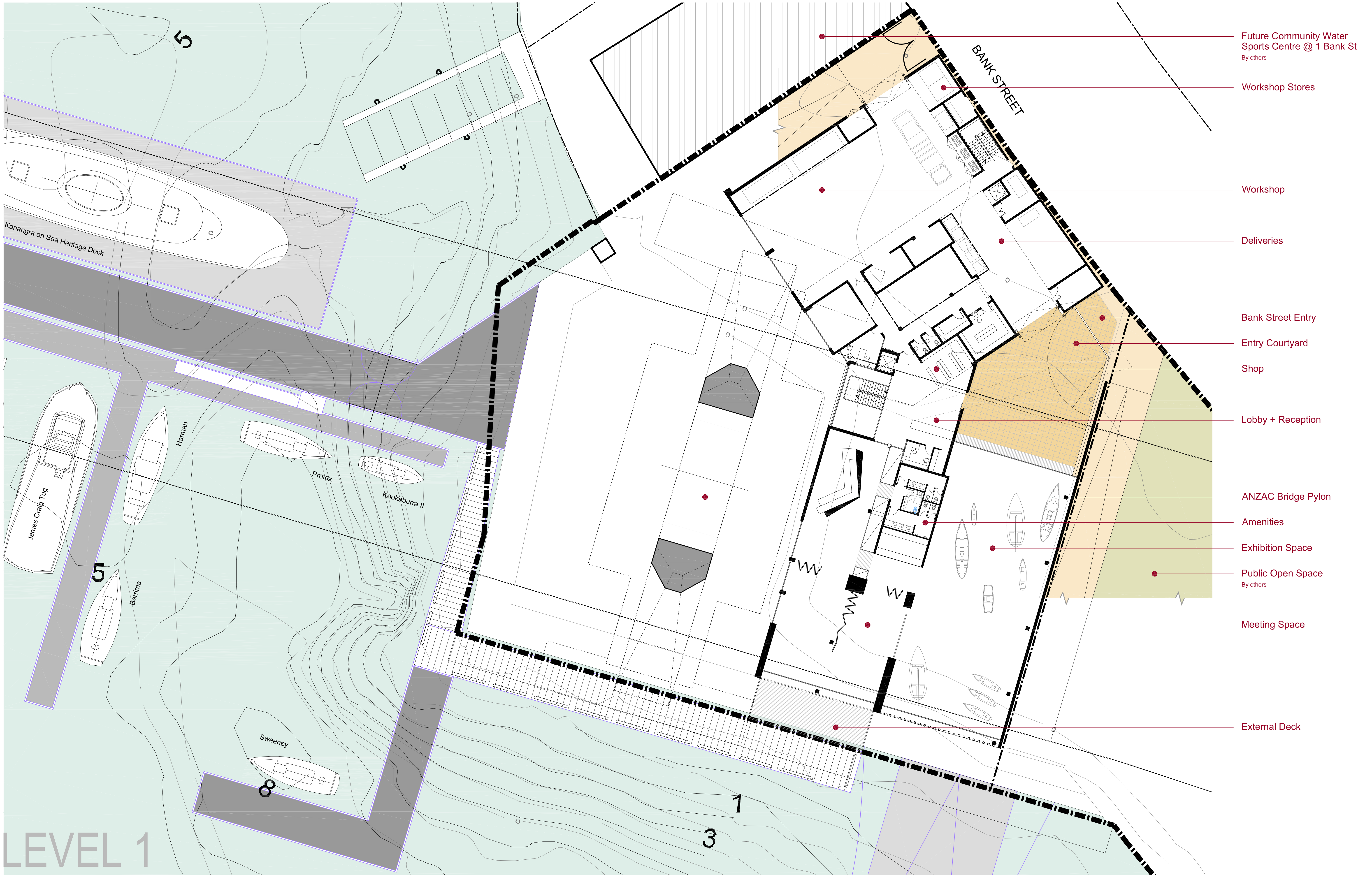




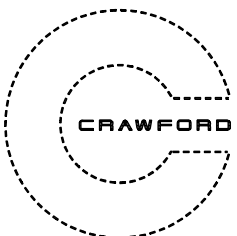
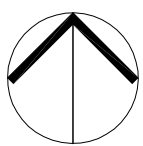
# SYDNEY HERITAGE FLEET BASE - Preliminary Environmental Assessment



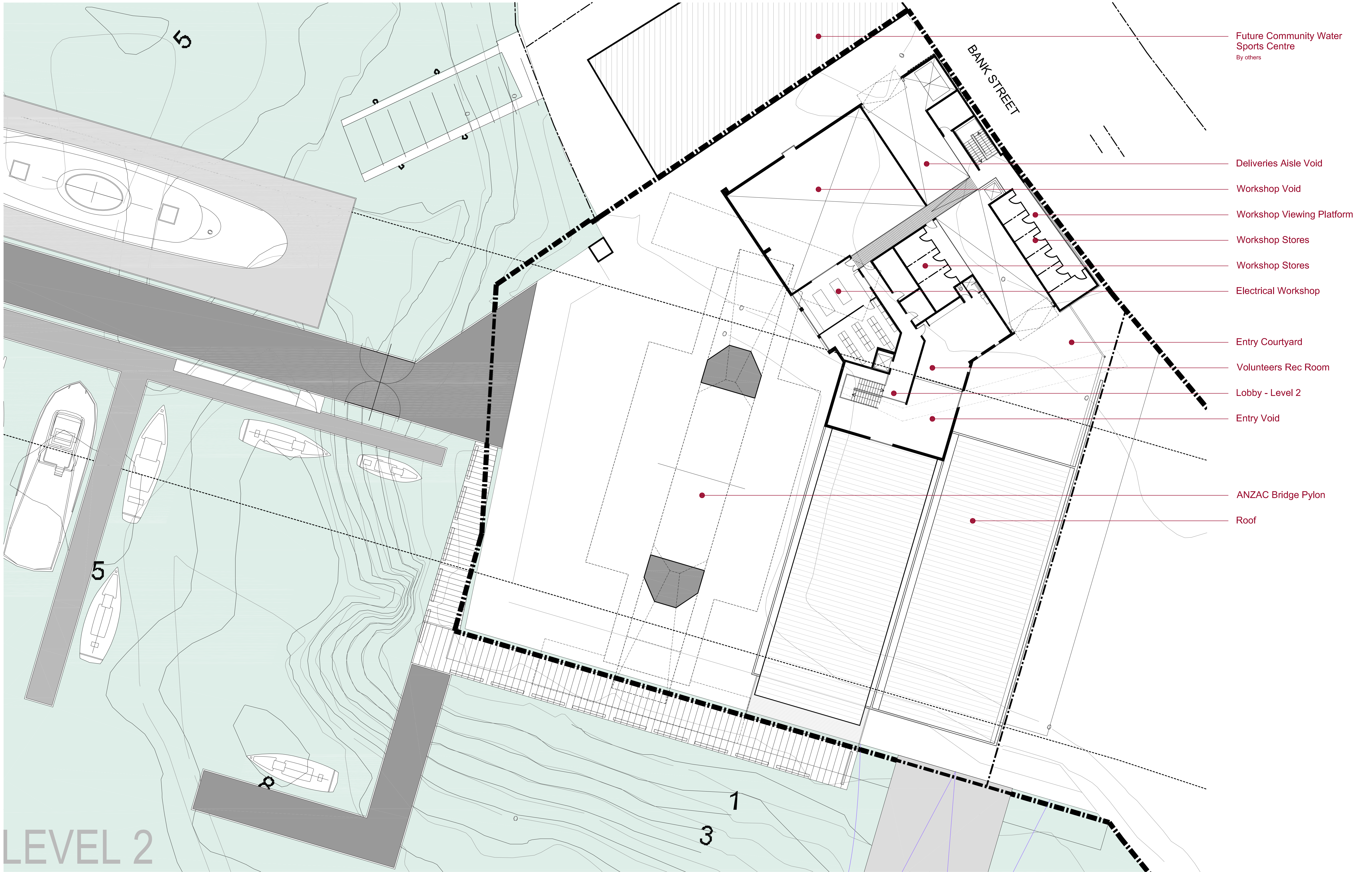




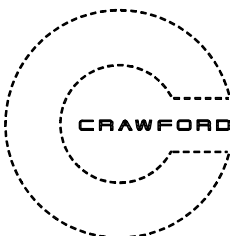
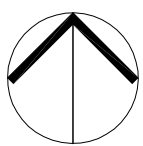
# SYDNEY HERITAGE FLEET BASE - Preliminary Environmental Assessment



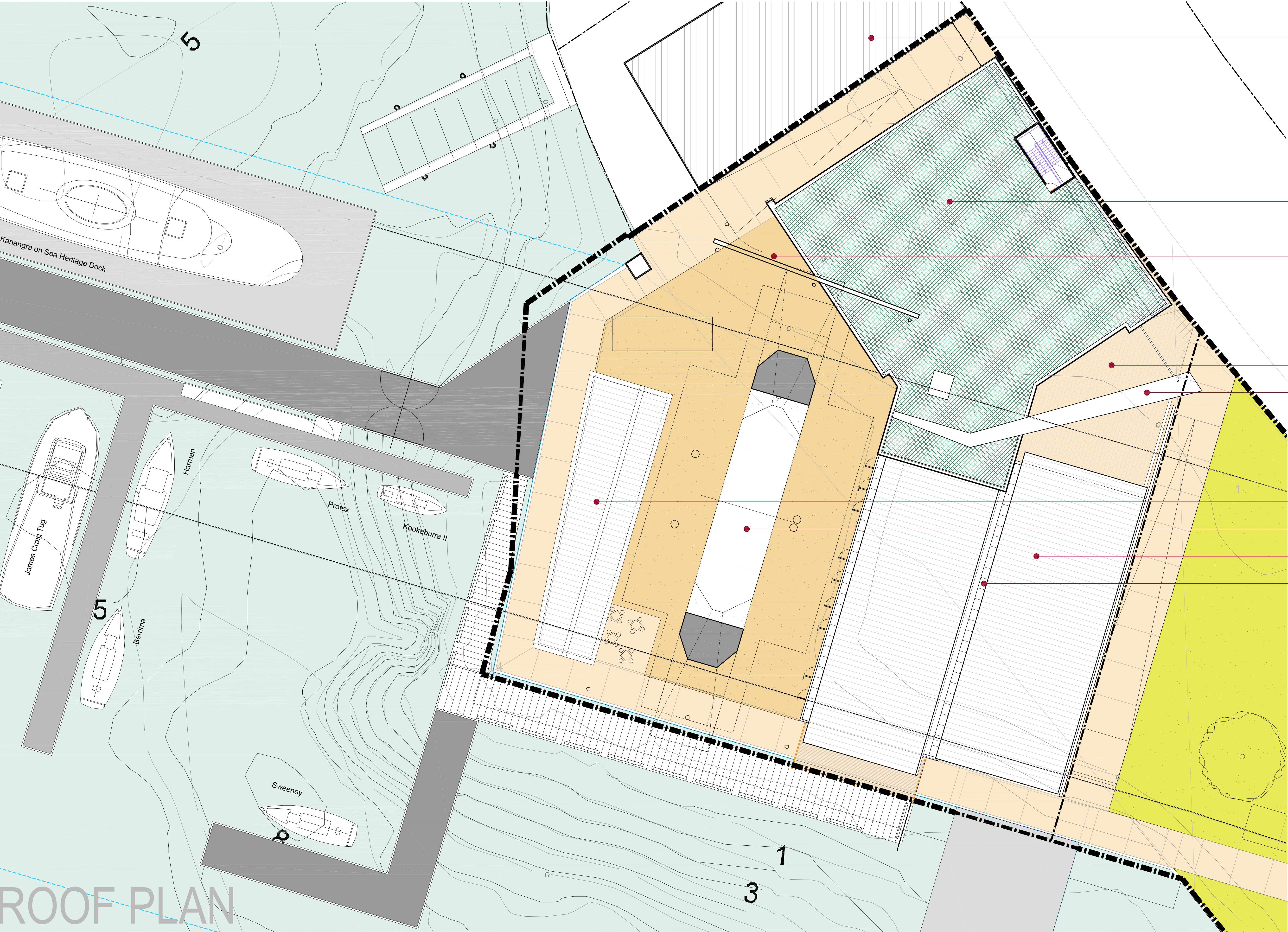




# SYDNEY HERITAGE FLEET BASE - Preliminary Environmental Assessment







Future Community Water Sports Centre  
By others

Extensive Green Roof  
Native grasses

Pylon Lighting Gantry  
Proposed 4m vertical shift to existing Pylon lighting: Support provided from new horizontal and accessible gantry structure. (All subject to approvals and lighting design confirmations). Implemented prior to construction of new building to maintain uninterrupted night time lighting of bridge and pylon

Entry Courtyard Below

Entry Courtyard Canopy

Exhibition Pavilion Roof

ANZAC Bridge Pylon

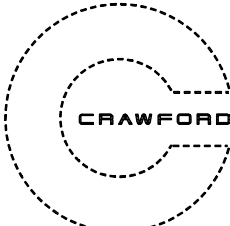
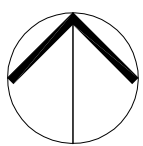
Roof

High Level Glazing

EXTENSIVE GREEN ROOF NOTES:  
- Can reduce urban heat islands by providing shade and through evapotranspiration (the release of water from plants to the surrounding air);  
- Absorb air pollution, collect airborne particulates, and store carbon;  
- Filter pollution from rainwater. This is achieved by the root systems' bacteria and fungi, which utilise the natural filtering processes of bioremediation and phytoremediation. As a result, the non-point source pollutants (nitrogen and phosphorus) are broken down and detoxified, with the process increasing over time as plants and root systems mature;  
- Protect underlying roof material by eliminating exposure to the sun's ultraviolet (UV) radiation and extreme daily temperature fluctuations.  
- Serve as living environments that provide habitats for birds and other small animals;  
- Reduce noise transfer;  
- Insulate the building from extreme temperatures, mainly by keeping the building interior cool in the summer;  
- Generally be low maintenance.

ROOF PLAN

SYDNEY HERITAGE FLEET BASE - Preliminary Environmental Assessment

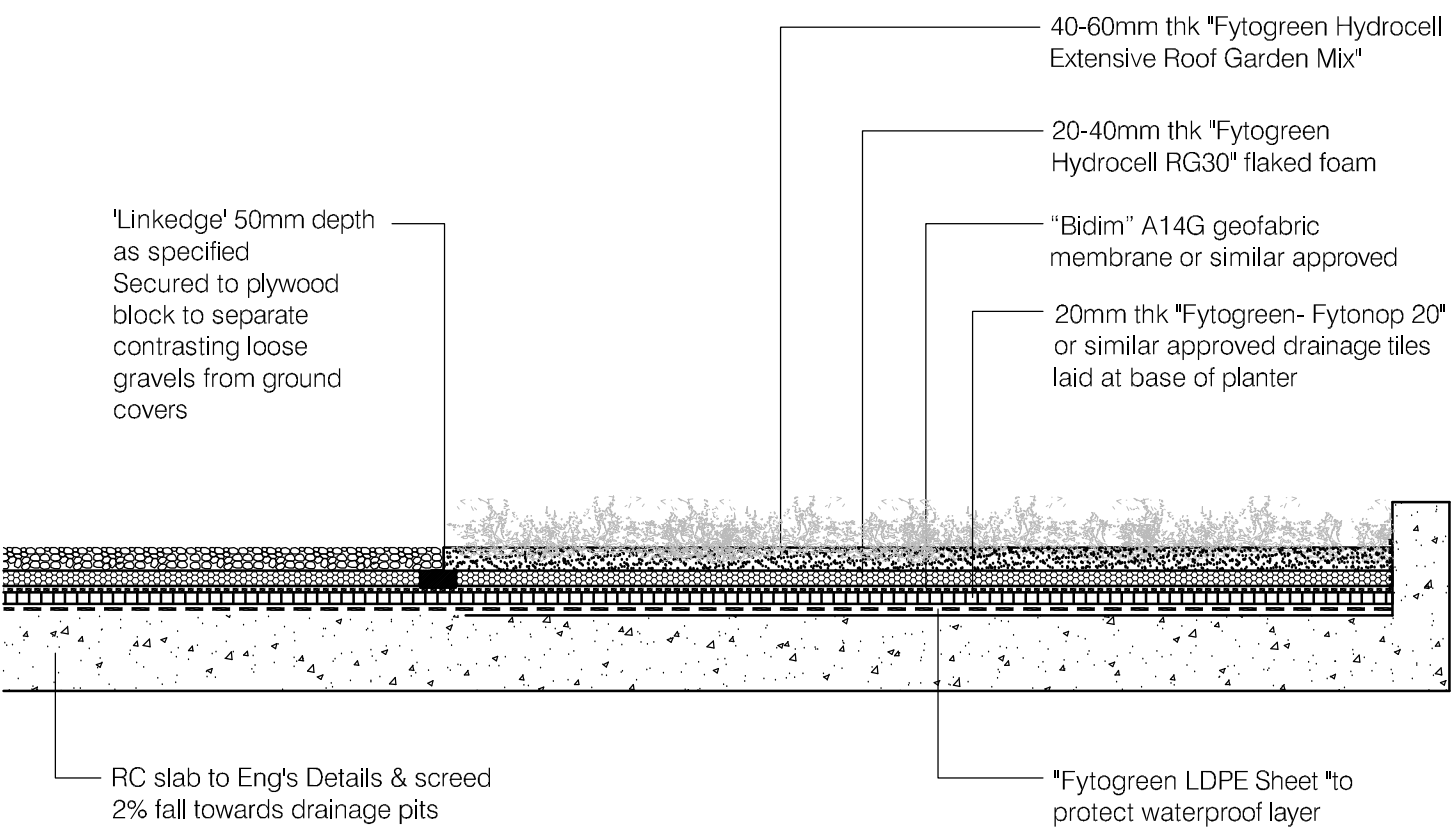






PLANTING PLAN

scale 1:200



TYPICAL DETAIL : extensive roof garden

scale 1:20

LEGEND

- Proposed feature deciduous tree planting (refer to plant schedule)
- Proposed ground cover & native grass planting (refer to plant schedule)
- Proposed garden edge "Linkedge"
- Proposed pebbles maintenance path



INDICATIVE PLANT SCHEDULE

Botanical Name	Common Name
<b>Tree</b>	
<i>Pyrus calleryana</i> 'Chanticleer'	Calleryana Pear
<b>Native Grasses</b>	
<i>Dianella</i> "Aranda"	
<i>Dianella</i> "Little Jess"	
<i>Dianella</i> "Lucia"	
<i>Lomandra</i> "Katie Belles"	
<i>Lomandra</i> "Katrinus deluxe"	
<i>Lomandra</i> "tanika"	
<i>Lomandra</i> "Tropic Belle"	
<i>Pennisetum</i> "nafray"	
<i>Pennisetum</i> "penstripe"	
<i>Themeda</i> "mingo"	
<b>Groundcovers</b>	
<i>Anigozanthus</i> "Gold velvet"	Kangaroo Paw
<i>Brachycombe multifida</i>	Rock Daisy
<i>Carpobrotus glaucescens</i>	Pig face
<i>Grevillea</i> "Gaudichaudi"	Prostrate Grevillea
<i>Helianthus actinotus</i>	Flannel Flower
<i>Myoporum</i> "Yareena"	
<i>Scaevola</i> "Purple fusion"	

PLANT IMAGES



*Pyrus calleryana* 'Chanticleer'



*Anigozanthus* "Gold velvet"



*Themeda* "mingo"



*Brachycombe multifida*



*Carpobrotus glaucescens*



*Dianella* "Little Jess"



*Lomandra* "Katie Belles"



*Myoporum* "Yareena"



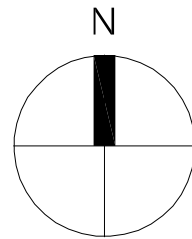
*Pennisetum* "nafray"

**SYDNEY HERITAGE FLEET BASE**  
Bank Street, Pyrmont - Lot 19 and Lot 20

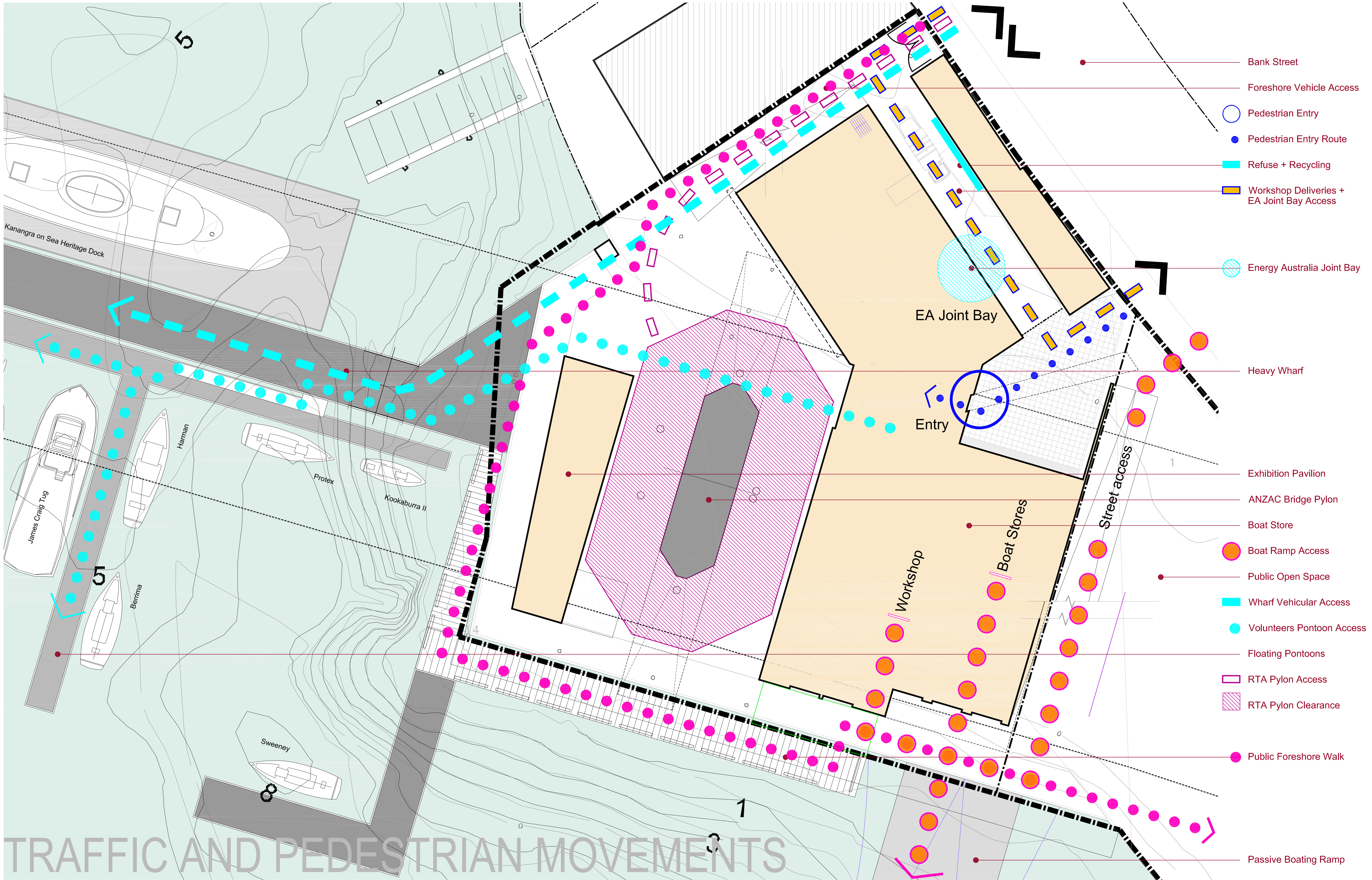
LANDSCAPE CONCEPT PLAN

**STURT ASSOCIATES**  
SUITE 91, 330 WATTLE STREET  
ULTIMO NSW 2007  
T: (02) 9211 3744 F: (02) 9211 9449  
E: enquiries@sturtassociates.com.au

DATE: 08 DECEMBER 2010  
DRAWING: DA-1035-01  
SCALE 1:200 @ A1







# SYDNEY HERITAGE FLEET BASE - Preliminary Environmental Assessment