

THE WETLAND

The primary function of the wetland area is for water retention and detention for the site and filtration of stormwater runoff. It will also provide storage for irrigation utilising recycled water.

There is the potential to utilise the wetland area for passive recreation and ecological education by incorporating boardwalks and interpretation signage throughout the area.

Plants typically found in natural wetlands and sedgeland areas will be planted around the edges and low lying areas. A transition zone around the edges of the open water areas will be constructed to provide a safety zone for macrophytes.

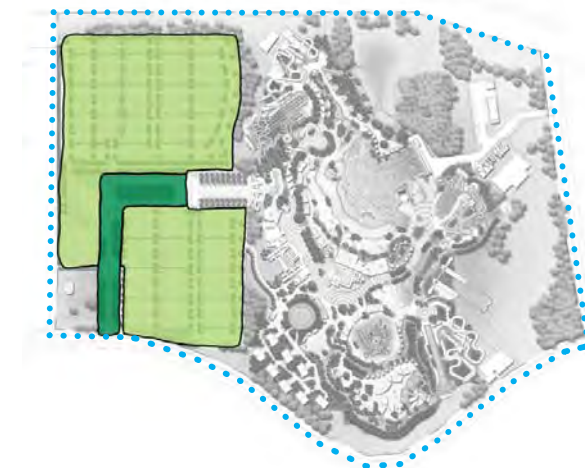


THE ARRIVAL AND CARPARK

The entry to the water park is celebrated with an axial avenue of trees, reinforcing the sequence of events from arrival to park entry. The hierarchy of the avenue, internal circulation roads, car parking facilities and pedestrian circulation paths provides a legible structure to the layout of the car park.

Contrasting tree species line the primary pedestrian paths through the car park establishing a distinct visual orientation device providing clear direction to the entry plaza.

Water sensitive urban design (WSUD) initiatives are incorporated throughout the car park with bio-swales planted with native grasses and sedges located to collect stormwater runoff from the surface carpark areas. In combination with the tree planting, the swales break up the expansive area of bituminised car parking thereby reducing glare and heat island effect.

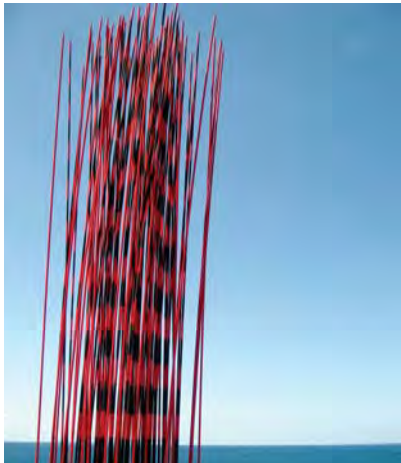
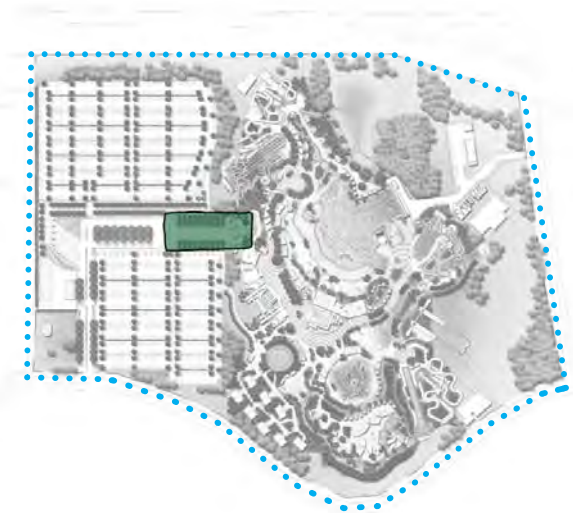


THE ENTRY FORECOURT

The entry plaza provides a vehicular set down and pickup and is the place to gather and meet with friends and family before entering the water park. A double avenue of palm trees flank an open central space offering generous areas for seating in shade or to gather in while maintaining a free flow of movement to and from the entry pavilion for all patrons. There is the potential to incorporate signature sculptural elements and water features into the entry plaza.

The plaza extends through the entry pavilion which contains the ticketing booths and terminates at a look out area which provides the first view out over the beach and the rest of the park.

Disabled parking is also located at the entry to provide easy access to the entry forecourt.





04 PLANTING STRATEGY





THE BEACH AND PROMENADE

TREES

- Araucaria heterophylla* (3)
- Cupaniopsis anacardioides* (4)
- Melaleuca armillaris* (12)
- Melaleuca nodosa*

SHRUBS & GROUDCOVERS

- Acacia longifolia* (1)
- Banksia spinulosa* (2)
- Banksia integrifolia* (5)
- Bauera rubinoides* (8)
- Carpobrotus glaucescens* (6)
- Correa alba* (7)
- Hibbertia scandens* (9)
- Leptospermum laevigatum* (10)
- Lomandra longifolia* (11)
- Myoporum insulare* (14)
- Scaevola aemula* (13)
- Westringia fruticosa* (15)

THE ENTRY FORECOURT

TREES

Phoenix canariensis (1)

SHRUBS & GROUDCOVERS

Anigozanthos sp. (5)

Dianella tasmanica (2)

Lomandra longifolia Tanika (4)

Phormium tenax Atropurpureum (3)



THE ACCENTS

TREES

Ficus hillii (1)

Tibouchina lepidota 'Alstonville' (2)

Ficus macrophylla (3)

Agathis robusta (4)

Brachychiton acerifolius (5)

Jacaranda mimosifolia (6)

Erythrina verna (7)



THE SUB TROPICAL RAINFOREST

UNDERSTORY

FERNS & PALMS

- Adiantum formosum (1)
- Asplenium australasicum (2)
- Blechnum nudum (3)
- Cyathea cooperi (6)
- Dicksonia antarctica (10)
- Linospadix monostachya (11)

SHRUBS

- Alpinia zerumbet (16)
- Colocasia gigantea (13)
- Cordyline stricta (5)
- Ctenanthe 'Burle marxii' (12)
- Heliconia psittacorum (15)

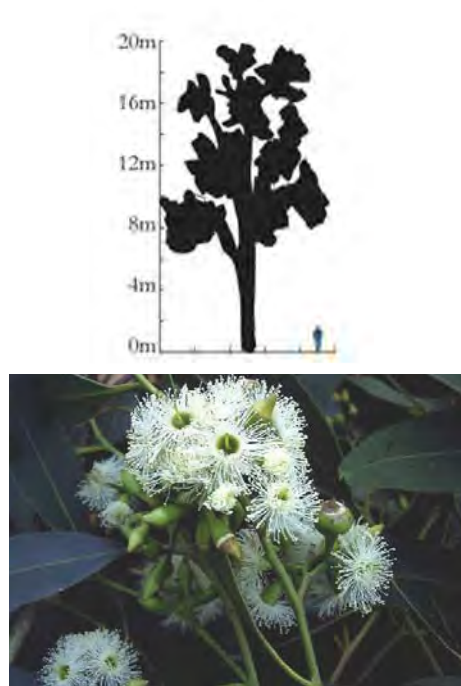
EPHYPHYTES

- Dendrobium tetragonum (7)
- Dendrobium teretifolium (8)
- Platyserium bifurcatum (9)
- Sarcochilus falcatus (14)

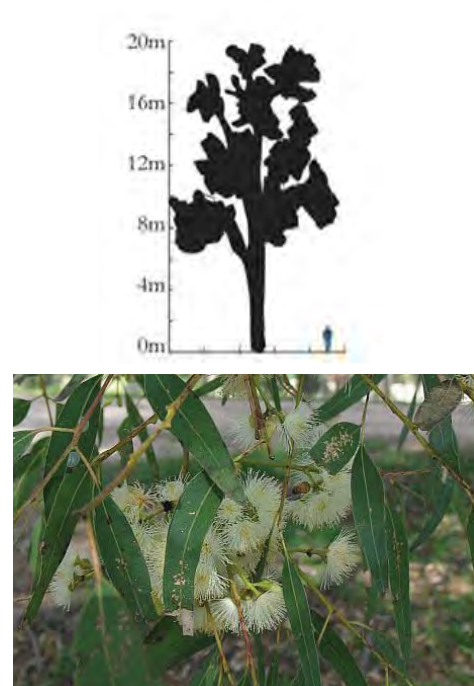
CLIMBERS

- Cissus antarctica (4)





1. *Eucalyptus moluccana* - Grey Box



2. *Eucalyptus tereticornis* - Forest Red Gum



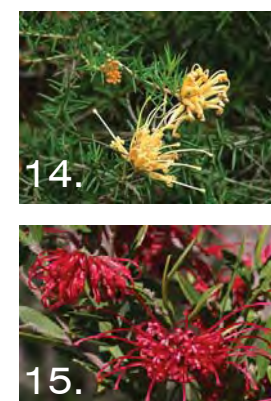
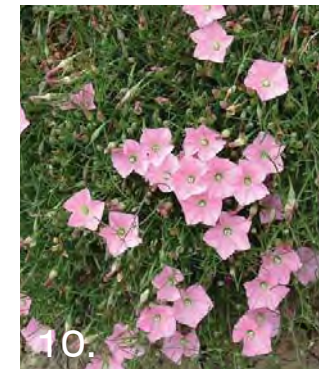
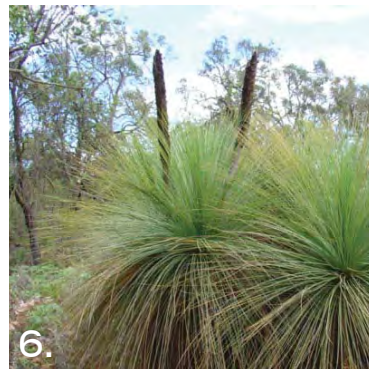
3. *Banksia marginata*- Silver Banksia



4. *Banksia serrata*- Old man banksia



5. *Eucalyptus sideroxylon*- Red Ironbark



THE WOODLAND

TREES

- Corymbia maculata*
- Banksia marginata* (3)
- Banksia serrata* (4)
- Eucalyptus cinerea*
- Eucalyptus gummifera*
- Eucalyptus haemastoma*
- Eucalyptus moluccana* (1)
- Eucalyptus pauciflora*
- Eucalyptus sideroxylon* (5)
- Eucalyptus viminalis*
- Eucalyptus tereticornis* (2)
- Melaleuca quinquenervia* (8)

SHRUBS & GROUNDCOVERS

- Acacia falcata*
- Acacia lonifolia* (7)
- Acacia parramattaensis*
- Backea virgata* (9)
- Convolvulus erubescens* (10)
- Dodonaea viscosa* 'Purpurea' (11)
- Doryanthes excelsa* (12)
- Eriostemon myoporoides* (13)
- Grevillea juniperina* (14)
- Grevillea speciosa* (15)
- Hakea sericea*
- Leptospermum flavescens* (16)
- Leptospermum scoparium* (17)
- Xanthorrhoea arborea*
- Xanthorrhoea australis* (6)

THE WETLAND

TREES

- Angophora floribunda
- Eucalyptus amplifolia (6)
- Melaleuca decora (10)
- Melaleuca linariifolia (12)
- Melaleuca quinquenervia (13)

SHRUBS & GROUNDCOVERS

- Banksia robur (1)
- Boronia barkeriana (4)
- Crinum pendunculatum (5)

WATER PLANTS & GRASSES

- Baumea rubiginosa (2)
- Bolboschoenus caldwellii (3)
- Bolboschoenus fluviatilis (14)
- Carex appressa (7)
- Eleocharis acuta (8)
- Isolepsis nodosa
- Juncus usitatis
- Lepironia articulata (9)
- Pennisetum alopecuroides (11)
- Schoenoplectus mucronatus
- Schoenoplectus validus





THE ARRIVAL AND CARPARK

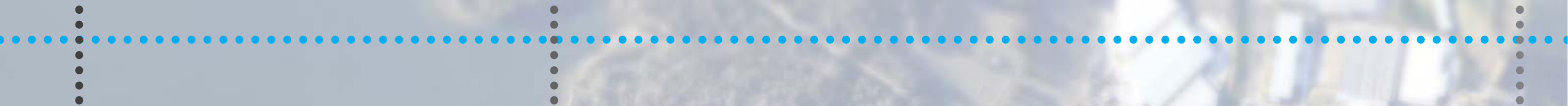
TREES

- Araucaria cunninghamii* (1)
- Corymbia maculata* (2)
- Tristaniopsis laurina* (3)

SHRUBS & GROUNDCOVERS

- Alcantarea imperialis* (4)
- Cycas revoluta* (8)
- Dianella tasmanica* (6)
- Isolepis nodosa* (7)
- Lomandra longifolia* Tanika (5)

05 LIGHTING STRATEGY



INDICATIVE LIGHTING STRATEGY

Lighting will be used throughout the site to provide a safe environment during evening operations. It will also aid in geographical orientation through well lit pedestrian pathways, along the main promenade spine and in the surface carparks. Lighting will also be used to highlight focal points and feature elements and provide different effects, character and a heightened sense of drama at night.

Attention will be given to architectural features such as bridges, water slides and rides as well as shade structures and buildings through the use of down and uplights and significant vertical surfaces will be emphasised with washes of coloured lights.

Atmosphere will be created by highlighting feature trees and landscape elements with uplights and special feature lighting to prominent structures. Additional clutter will be avoided in the public domain where possible by integrating low level lighting into site furniture rather than relying on pole mounted luminaries and bollard lights.

The public domain lighting will also look to incorporate sustainable initiatives including the use of renewable energy resources, high efficiency and long life lamps sources, an automated switching based on presence detection. All external lighting will comply with relevant Australian Standards and minimise light spill (light pollution) particularly with regard to the use and location of uplights and carpark lighting.

