



Ecological Assessment Report – Lower Hunter Lands

Minmi-Link Road

Prepared by:

RPS

PO Box 428
Hamilton NSW 2303

T: 02 4940 4200

F: 02 4961 6794

E: newcastle@rpsgroup.com.au

W: www.rpsgroup.com.au

Report No: 24530-2

Version/Date: Final, January 2011

Prepared for:

Coal & Allied Industries Ltd

(REF: Coal & Allied-LHL-001)

Document Status

Version	Purpose of Document	Orig	Review	Review Date	Format Review	Approval	Issue Date
<i>Final</i>	<i>Final for Review</i>	<i>SC/ MD</i>	<i>MD</i>	<i>20-10-10</i>	<i>JH 15-7-10</i>	<i>MD</i>	
<i>Final</i>	<i>Final for RoA</i>	<i>SC/ MD</i>	<i>MD</i>	<i>25-11-10</i>	<i>JH 25-11-10</i>	<i>MD</i>	<i>30-11-10</i>
<i>Final</i>	<i>Final for Submission</i>	<i>MD</i>	<i>MD</i>	<i>31-1-11</i>	<i>JH 1-2-11</i>	<i>MD</i>	<i>1-2-11</i>

Disclaimers

This document is and shall remain the property of RPS. The document may only be used for the purposes for which it was commissioned and in accordance with the Terms of Engagement for the commission. Unauthorised copying or use of this document in any form whatsoever is prohibited.

Executive Summary

INTRODUCTION

RPS Australia East Pty Ltd (RPS) has been commissioned by Coal & Allied Industries Limited (Coal & Allied) to undertake an Ecological Assessment Report (EAR) over land within Minmi - Link Road, for proposed development and conservation offsets as outlined within the Lower Hunter Regional Strategy. The proposal is to be assessed under Part 3A of the *Environmental Planning and Assessment Act 1979*. Due recognition and consideration of the *Threatened Species Conservation Act 1995* and the *Fisheries Management Act 1994* has been made throughout this assessment. Director General's Environmental Assessment Requirements (DGEAR's) were issued for the site in August 2010.

This study is intended to investigate the potential ecological impacts of the proposal as required by the Part 3A DGEAR's. The primary impacts are likely to be associated with the removal of vegetation both in terms of direct impacts upon native stands of vegetation and to a lesser extent, upon habitat for native fauna within and directly adjacent to the Development Estates. To ensure completeness, ecological fieldwork and assessment has covered the full extent of the Coal & Allied surplus lands, including all development and Conservation Estates.

BACKGROUND

Harper Somers O'Sullivan (2005) has previously undertaken Preliminary Vegetation Mapping over various holdings administered by Coal & Allied in the Lower Hunter Valley / Central Coast Region. This preliminary mapping was undertaken to provide a baseline dataset pertaining to the broad-scale distribution of ecological communities throughout the land holdings. This assessment was largely undertaken at a desktop level relying on aerial photography combined with existing regional mapping datasets and limited ground-truthing.

Between January 2007 – April 2010 ecological investigations were undertaken to inform the urban design and NSWG assessment process.

These investigations were intended to provide a brief assessment of the conservation status of previously delineated vegetation communities.

The report herewith builds on the existing dataset, and provides the necessary level of detailed information for the assessment of the proposals under relevant legislation.

METHODS

The DGEAR's stipulate assessment should have due regard to DECCW's Threatened Species Assessment Guidelines. These guidelines refer the user to consult the Threatened Biodiversity Survey and Assessment Guidelines – Working Draft (DEC 2004) and any relevant recovery plans and threat abatement plans for ecological assessment. To this end these documents have formed the core basis for ecological assessment over the site. In brief the methods employed to assess the ecological merit of the site involved the following (Note: Detailed assessment methods are presented within Section 3 of this report):

- Literature Review
- Preliminary (Desktop) Assessments

- Field Investigations
 - » Flora Assessment
 - Plant Identification and Vegetation Mapping
 - Floristic Structure Information
 - Targeted and Significant Flora Surveys
 - » Fauna Assessment
 - » Habitat Assessment and Mapping

RESULTS

Flora

A total of 345 flora species were identified over the Minmi - Link Road Development Estate during targeted flora surveys, including one threatened flora species and three Endangered Ecological Communities.

Threatened species include:

- *Tetratheca juncea*

A total of 10 *Tetratheca juncea* plant clumps were located during the targeted surveys within the Minmi - Link Road Development Estate. All of these plant clumps will be removed as part of the proposal however there are over 350 plant clumps that will be retained within the Conservation Estates.

A further seventeen (17) threatened flora species have been previously recorded within the locality and/ or have potential habitat within the Development Estate. For one of these species, *Diuris praecox*, separate targeted searches were conducted during its flowering season; however no individuals of this species were located during any of the targeted searches. The remaining sixteen species were targeted during *Tetratheca juncea* and *Diuris praecox* surveys; however none were recorded within the Development Estate.

One ROTAP listed species (Briggs and Leigh, 1996) *Eucalyptus fergusonii* subsp. *dorsiventralis* was identified within the Minmi - Link Road Development Estate.

Nine vegetation communities have been delineated and described for the Link Road – Minmi Development Estate, including three listed EECs which collectively comprise approximately 26% of the study area:

- Coastal Plains Smooth-barked Apple Woodland

This vegetation community occupies a small area within the southern section to the south of the Link Road and encompasses 22.98 ha of the proposed Development Estate. The threatened flora species *Tetratheca juncea* was recorded within this community.

- Lower Hunter Spotted Gum Ironbark Forest (EEC)

This community occupies the majority of the Development Estate and covers approximately 136.80 ha or and generally occurred on the north facing slopes of the Development Estate.

- Coastal Foothills Spotted Gum Ironbark Forest

This community occupies approximately 169.42 ha. This community is variable with the southern areas having some *Angophora costata* as a co-dominant within the canopy layer and other areas with only *Corymbia maculata* and *Eucalyptus fergusonii* subsp. *dorsiventralis* as the dominant canopy species.

- Alluvial Tall Moist Forest

This vegetation community covers approximately 30.83 ha of the Development Estate. This vegetation community occurs within the creeklines within the Development Estate. These creeklines include Minmi Creek, Maryland Creek and Brush Creek.

- Hunter Valley Moist Forest

This vegetation community occurs within the steep south facing slopes within the area to the south of the Link Road. This vegetation community covers approximately 21.94 ha of the proposed Development Estate.

- Hunter Lowland Redgum Forest (EEC)

This vegetation community occurs in a relatively small patch in the northern portion of the Development Estate adjoining Minmi and encompasses 0.39 ha. This community is described as a highly disturbed remnant of HLRF.

- Freshwater Wetland Complex (EEC – Freshwater Wetlands on Coastal Floodplains)

This vegetation community occurs in the northern section of the Development Estate adjoining Minmi. This vegetation community is part of the north western edge of Hexham Swamp and covers a relatively small area of the Development Estate of approximately 0.37 ha.

- Weeds and Cleared Areas

This vegetation community occurs within the central portion of the Development Estate and is the result of clearing for the mining operations, unformed tracks and electricity easements. This community encompasses approximately 140.37 ha of the proposed Development Estate and is not commensurate with any vegetation communities that have been described by LHCCREMS (NPWS 2000; House 2003). These areas are highly disturbed and have high weed incursions.

- Dam

This vegetation community occurs as manmade dams within the cleared areas of the Development Estate, with the large dams in the north east of the Development Estate utilised as water reservoirs for the former mining operations. This community encompasses approximately 1.30 ha of the proposed Development Estate.

Fauna

A total of fifty-eight (58) threatened fauna species have been previously recorded within 10km (DECCW Atlas of NSW Wildlife Data 2010) of the Development Estate (as per existing records). Of these, twenty (20) species are considered highly unlikely to occur within the Development

Estate due to the absence of suitable habitat. Of the remaining thirty-eight (38) species, five (5) were recorded during fauna surveys, those being *Phascolarctos cinereus* (Koala), *Petaurus norfolcensis* (Squirrel Glider), *Pteropus poliocephalus* (Grey-headed Flying-fox), *Miniopterus australis* (Little Bentwing-bat) and *Mormopterus norfolkensis* (East Coast Freetail-bat).

A further twelve (12) threatened fauna species are considered as having a moderate or greater opportunity of occurring within the site on at least an intermittent basis, due to the existence of potential habitat within the site.

Flora Habitat

The vegetation communities present throughout the site offer a number of suitable habitat types for an array of native flora species. A number of geomorphological factors contribute to the diversity of vegetation communities present within the Minmi Link Road area. These factors include the geology, soils, elevation, topography and rainfall patterns. This range of geomorphological influences has produced a number of vegetation communities (6). 'Lower Hunter Spotted Gum – Ironbark Forest' (LHSGIF), 'Coastal Foothills Spotted Gum – Ironbark Forest' (CFSGIF), 'Coastal Plains Smooth-barked Apple Woodland' (CPSBAW), 'Alluvial Tall Moist Forest' (ATMF), 'Dams' and 'Weeds, Cleared Areas and Modified Vegetation' (WCAMV). LHSGIF within the site is of significance. This vegetation community is listed as an Endangered Ecological Community (EEC) under the *TSC Act 1995*.

The condition of the vegetation communities varies across the site and generally corresponds to close proximity to urban development, tracks and previous long history of underground mining, grazing and other associated land-use practices within the site.

A number of threatened flora species are known to occur locally within LHSGIF, CPSBAW, CFSGIF and ATMF. LHSGIF elsewhere within the region is known to contain *Grevillea parviflora* subsp. *parviflora*, *Callistemon linearifolius*, *Rutidosis heterogama* and in some cases *Tetradlea juncea*. Threatened flora species known to be associated with CPSBAW are *Tetradlea juncea*, *Grevillea parviflora* subsp. *parviflora*, *Angophora inopina* and *Cryptostylis hunteriana*. A threatened flora species known to be associated with CFHSGIF is *Tetradlea juncea*. Threatened flora species known to be associated with ATMF are *Melaleuca biconvexa*, *Dendrobium melaleucaphilum* and *Syzygium paniculatum*.

A number of ROTAP listed flora are known to occur within LHSGIF, including *Grevillea montana*, *Macrozamia flexuosa* and *Eucalyptus fergusonii* subsp. *fergusonii*. A ROTAP species that is known to occur within CPSBAW is *Macrozamia flexuosa*. ATMF in the region is known to contain the ROTAP listed *Callistemon shiressii*. Furthermore, at least one Regionally Significant plant species, being *Grevillea humilis* has been noted as occurring within the vicinity of the site in CPSBAW.

Fauna Habitat

The Development Estate is characterised by a moderate diversity of vegetation communities dominated by dry sclerophyll forest with relatively small areas of alluvial forest within the larger gullies. Lower drainage lines contain areas of broad slow moving water where rushes colonise and there are a few small dams within the site.

Wooded areas of the site provide potential foraging opportunities for a number of threatened fauna guilds. The diversity of eucalypt and other dominant trees are likely to provide foraging resources, including nectar and associated insect prey, for a diversity of species including common birds, Microchiropteran bats and arboreal mammals throughout the majority of the year.

The Development Estate provides few opportunities for threatened woodland bird species, such as Black-chinned Honeyeaters, Brown Treecreeper, Speckled Warbler, Hooded Robin, Turquoise Parrot or Diamond Firetail, due to its easterly location and the paucity of records for these species

in the locality although there are foraging opportunities for mobile nectivorous species such as the Swift Parrot. However, habitat within the site is not considered suitable for Regent Honeyeaters, due to the low structural and floristic diversity and a lack of high quality lowland riparian habitat that this species appears to prefer in the Lower Hunter Region.

The relatively unbroken canopy stratum across much of the site is suited to arboreal mammals such as possums and gliders, including Squirrel Gliders. The Development Estates do not appear to be of sufficient extent or quality to support larger Petaurids such as Yellow-bellied and Greater Gliders, but there are abundant foraging opportunities for Microchiropteran bats and Flying-foxes.

Despite records for threatened wetland bird species within the Development Estates (Atlas of NSW Wildlife data) there are no suitable habitats, which might support these species and the records are likely due to spatial errors and the proximity to the wetlands of the Hexham Floodplain.

Understorey strata in most forested areas are relatively sparse with low densities of forest debris thus providing little cover or foraging opportunities for small mammals, birds and reptiles. Woodland areas provide greater understory diversity, although these habitats are not extensive in size. As such the Development Estate understorey habitats are largely suited to common fauna species suited to lower quality habitats. Large areas of cleared lands within the Development Estate in the vicinity of Minmi and these areas provide little habitat for more than the most common native fauna and introduced species.

Most Open Forest communities exhibit low densities of trees of sufficient maturity to provide hollows placing limitations upon those species that require this resource for nesting or shelter. Woodland and Alluvial forest habitats provide a greater number of hollow-bearing trees, but these do not occur in abundance.

Drainage lines within the Development Estate are unlikely to provide habitat opportunities for more than common frog species due to lack of suitable habitat for threatened frog species within the locality.

Swift Parrot Target Survey Results

No Swift Parrots were observed within the Minmi - Link Road Development Estate during the 2008 survey. Overall, the Conservation Estates exhibit greater habitat opportunities for this species, due to the greater extent of widespread habitat, predominantly Spotted Gum-Ironbark assemblages, Alluvial Tall Moist Forest, and the inclusion of riparian Red Gum communities, which are likely to represent focal habitat points for these species during seasons when they occur within the locality. The absence of this species from the site during the winter of 2008 is consistent with the paucity of coastal and Lower Hunter records for both of these species during the 2008 season. There have been few Swift Parrot records within the region compared with previous years and no local Regent Honeyeater records during the 2008 winter period apart from five recorded at Quorrobolong in early August. Evaluation of potential habitats within Conservation Estates suggests that there is a good probability that both of these species would use the site during favourable years within the region. However, the same assumptions are not considered to apply to the Minmi - Link Road Development Estates, due to the smaller amounts of suitable habitat, lack of Red Gum habitats and the somewhat isolated and to some extent fragmented nature of these lands in comparison with the extent of the Conservation Estates and their continuity to large significant forest areas in the regional context.

CONSERVATION & DEVELOPMENT OUTCOMES

The Lower Hunter Region's vegetation is of bio-geographic significance as it supports a transition between the northern and southern plant and animal assemblages. This north-south link is not evident elsewhere in the Hunter Valley. The Region also forms an east-west migratory pathway and a drought refuge for inland species.

The preservation of large vegetated areas that are linked to other similar areas has been recognised as fundamentally important to achieving long term regional biodiversity outcomes in the Lower Hunter region. The two most valued of these areas in the Lower Hunter contain large land areas owned and controlled by Coal & Allied. The first is the green corridor that links the Watagans and Yengo National Parks with the coastal plains of the Tomago Sandbeds, Stockton Bight and Port Stephens and secondly, the Wallarah Peninsula lands provide a regionally significant break between urban areas, and contain areas of high biodiversity, scenic amenity and heritage value.

The Coal & Allied lands to be dedicated for conservation purposes form both large areas of vegetation in their own right, and complete linkage of identified regional corridors in key areas.

In addition to their important strategic location in a wider landscape context, the Conservation Estates contain valuable biodiversity resources. They contain and will conserve a range of important vegetation communities, including areas of Endangered Ecological Communities (EEC) and other vegetation types that have been depleted in the region. Several threatened plant species have been recorded within the Conservation Estates, including *Arthropteris palisotii*, *Tetradlea juncea* (Black-eyed Susan), *Eucalyptus nicholii*, *Rutidosis heterogama*, *Syzygium paniculatum* and *Callistemon linearifolius*. Two of the threatened flora species recorded in the Conservation Estates are considered to be planted specimens and not naturally occurring, being *Eucalyptus nicholii* and *Syzygium paniculatum*, although *S. paniculatum* may have been transported to its position in a disturbed area by natural means. In addition to these threatened species two rare (ROTAP) species *Callistemon shiressii* and *Eucalyptus fergusonii* subsp. *dorsiventralis* were also identified within the Conservation Estates.

The diverse nature of both the landform settings, varying from coastal ranges forests and woodlands to coastal heath to wetlands, provides a diverse array of habitats and resources for native fauna. The Conservation Estates are known to contain important populations of numerous threatened fauna species, including birds, mammals and herpetofauna. The conservation of these lands will provide secure regional biodiversity gene pools, and also through linkages facilitate valuable genetic material exchange and other key processes associated with sustainable ecological population dynamics.

In summary, the Coal & Allied conservation dedications provide outcomes that contribute to meeting the Environmental Protection goals outlined in the Sustainability Criteria contained within the Lower Hunter Regional Strategy. Such includes:

- Outcomes consistent with the Lower Hunter Regional Conservation Plan;
- Maintains/improves areas of regionally significant biodiversity;
- Maintains environmental areas for air & water quality; and
- Protects areas of Aboriginal cultural heritage value and historical heritage value.

These outcomes:

- Conserve in perpetuity key strategic parcels of land that complete long sought after regional biodiversity conservation corridors and buffer areas;
- Provide large intact areas of conserved habitat that will function as regional biodiversity gene pools;
- Protect an important array of vegetation communities, flora and fauna species, and

- natural landscape assets, including threatened species and EEC's;
- Contribute significantly to the successful implementation of the Lower Hunter Regional Conservation Plan; and
 - Achieve additional conservation benefits within Development Estates via appropriate urban design and management practices.

CONCLUSION & RECOMMENDATIONS

The detailed studies undertaken herewith have confirmed that development of a small portion of Coal & Allied land identified will provide a mechanism for beneficial ecological outcomes within the proposed Conservation Estates for the vast majority of species and communities contained therein. The quantum of the offset lands, when viewed holistically with proximate existing and proposed conservation reserve areas, provides a robust long-term outcome for all species and communities. Furthermore, suitable actions are proposed to minimise potentially deleterious permanent and ongoing impacts to the Conservation Estates.

The field and desktop studies have recorded the following parameters of ecological significance within both the Conservation and the Development Estate:

- native vegetation commensurate with those listed as EEC's;
- threatened flora species recorded within and adjacent to the proposed development;
- threatened fauna species recorded within and adjacent to the proposed development;
- habitat for threatened flora and fauna species known from within and adjacent to the proposed development; and
- other areas containing native vegetation with varying degrees of modification / degradation.

With these potential ecological issues noted, a series of recommendations have been outlined, to aid in the reduction of potential impacts associated with the proposal.

Given measures have been taken to avoid ecological impacts and that where native vegetation may be affected, efforts have been made to avoid particularly sensitive areas where practical, it is considered unlikely that any significant impacts would occur upon threatened species, communities or populations. The large areas of Conservation Estates at Stockrington and Tank Paddock that will be set aside as part of the Coal & Allied development proposals in the Lower Hunter provide sound ecological outcomes across the sites. The Stockrington Conservation Estates will contribute a large portion of land to conservation in perpetuity, which will in essence formalise the Watagan to Stockton Corridor. The importance of the conservation of Tank Paddock as part of the Conservation Estates will result in maintaining a vegetation corridor from Hexham Swamp and the Hunter Estuary to the Watagan Mountains and the Sugarloaf Range. This large tract of native vegetation will provide protected habitat for a wide variety of native flora and fauna.

Therefore, it has been concluded that the proposed development should not significantly impact upon threatened or regionally significant flora and fauna, ecological communities or populations. The implementation of operative environmental management practices should also ensure that the ecological impact of the project is minimised.

The following recommendations have been outlined to ensure that the ecological impact of the proposed Development Estate is minimised as far as possible.

- Foremost, the management of the development and conservation land interface is critical to ensure that no direct or indirect impacts occur in the short and long term on dedicated Conservation Estates. As such, appropriate management plans should be prepared and implemented within the development framework in consultation with the NSW NPWS.
- The minimum amount of clearing necessary to facilitate the development should take place as a general objective of the project, particularly within those areas that currently contain identified native vegetation communities. These areas have been described within this report. This is especially important within or near those areas identified as containing vegetation consistent with EEC's.
- It is recommended that a *Tetratheca juncea* management plan be prepared to ensure the conservation and long term survival of this threatened species within the Conservation Estates.
- Mature and / or hollow-bearing trees should be retained wherever feasible within the development framework.
- Pre-clearing inspections should be undertaken by an ecologist in wooded areas where threatened fauna species have been recorded or are considered likely to occur. This is particularly important in areas where threatened fauna have been noted during recent surveys either breeding or nest-building. No breeding attempts should be disrupted during the course of the project, particularly by threatened fauna.
- During the construction phase, for any tree removal within forested areas, and in particular where hollow-bearing trees may be removed, all works should be supervised by an ecologist to recover any native fauna that are potentially displaced. Furthermore, where such risks occur, site-specific ecological advice should be sought to minimise impacts during the entire process. A clearing protocol should be adopted for the removal of trees containing suitable habitat hollows as follows (this is considered as a guideline, variations on the methods employed may be required to accommodate site specific factors):
 - » All hollow bearing trees are to be flagged by an ecologist prior to the commencement of works on the Development Estate.
 - » Underscrubbing of the entire Development Estate should be carried out by a 4x4 tractor with a slashing deck, this will minimise the establishment of degradation processes and leave a layer of mulch to aid in soil retention in the event of adverse weather. At this time felling of non habitat trees can take place, however a matrix of trees must be maintained to allow animal movement into the designated refuge area.
 - » After a period of two weeks, clearing of habitat trees should commence. Clearing must be carried out moving from the fringe of the matrix towards the refuge area. Trees should be 'soft felled' and inspected immediately by an ecologist for displaced fauna. All trees must be left for a minimum of two nights prior to being moved to a stockpile, to allow resident fauna to vacate tree hollows.

Note: Clearing should ideally take place outside of the dominant breeding seasons of resident fauna, preferably during late autumn and winter.

- Species selection for future landscaping works and seed stock for revegetation should be limited to locally occurring native species to maintain local genetic diversity. This should include *Eucalyptus robusta* and other regionally significant species.
- Appropriate vegetation, habitat and bushfire management plans should be included under an overarching Environmental Management Plan.
- Where possible, earthworks (and certainly all works in the vicinity of drainage lines) should be undertaken during appropriate (i.e. dry) weather conditions. This will ensure that any potential erosion events will be intercepted and that downstream impacts are minimised within any of the drainage lines. This will help to maintain existing habitat characteristics for native fauna in those areas, including those for threatened species.
- Nutrient and sediment control devices should be erected pre-clearing and post-construction works in sensitive areas where degradation processes may be triggered such as areas adjacent to watercourses until suitable rehabilitation has occurred to maintain surface integrity. Furthermore, stockpiles should be subject to individual sediment and nutrient control devices.
- A vegetation management plan is recommended to be prepared to put in place weed control measures for the drainage lines within the Development Estate. In addition this vegetation management plan should include recommendations for sediment and weed control in the northern section of the Development Estate where Minmi Creek flows into Hexham Swamp.

Terms & Abbreviations

Abbreviation	Meaning
aff.	Affinity
CEEC	Critically Endangered Ecological Community
CMA	Catchment Management Authority
Coal & Allied	Coal & Allied Industries Ltd
Conservation OR Offset Lands	Land proposed for dedication to NSW Government
Development Estate	Proposed Development Lands
DBH	Diameter (centimetres) at Breast Height
DECCW	NSW Department of Environment, Climate Change and Water
DGEAR's	Director General's Environmental Assessment Requirements
DoP	NSW Department of Planning
EA	Environmental Assessment
EAR	Ecological Assessment Report
EEC	Endangered Ecological Community
EMP	Environmental Management Plan
<i>EPA Act</i>	<i>NSW Environmental Planning and Assessment Act 1979</i>
<i>EPBC Act</i>	<i>Commonwealth Environment Protection and Biodiversity Conservation Act 1999</i>
<i>FM Act</i>	<i>NSW Fisheries Management Act 1994</i>
ha	hectare
HBOC	Hunter Bird Observers Club
Hwy	Highway
LGA	Local Government Area
LHCCREMS	Lower Hunter and Central Coast Regional Biodiversity Strategy (NPWS 2000; House 2003)
LHRCP	Lower Hunter Regional Conservation Plan
LHRS	Lower Hunter Regional Strategy
NPWS	NSW National Parks and Wildlife Service
NSWG	NSW Government
PFC	Projected Foliage Cover
RPS	RPS Australia East Pty Ltd
ROTAP	Rare or Threatened Australian Plants (Briggs & Leigh 1995) ROTAP Codes are as follows:- 2 = Geographic Range in Australia is less than 100 km R = Rare C = Conserved - = Reserved population unknown
SEPP 14	State Environmental Planning Policy 14 "Coastal wetlands"
SEPP 44	State Environmental Planning Policy 44 "Koala Habitat Protection"
Ssp. or subsp.	Subspecies
Sp	Singular Species
Spp	Multiple Species
SSS	State Significant Site
<i>TSC Act</i>	<i>NSW Threatened Species Conservation Act 1995</i>
Var.	Variety

Contents

EXECUTIVE SUMMARY	I
TERMS & ABBREVIATIONS	X
1 INTRODUCTION	1
1.1 Background	1
1.2 Site Particulars	1
1.3 Description of the Proposal	2
1.4 Scope of the Study	11
1.5 Definitions	12
1.6 EPBC Act 1999	12
1.7 Qualifications & Licensing	13
1.8 Sub-consultants, Personal Communications & Observations	13
1.9 Certification	14
2 LITERATURE REVIEW	15
3 METHODS	22
3.1 Preliminary (Desktop) Assessments	22
3.2 Survey Site Positioning & Delineation of Stratification Units	23
3.3 Preliminary Vegetation Assessment	24
3.4 Vegetation Mapping	24
3.5 Plant Identification	25
3.6 Landform and Geophysical Information	25
3.7 Floristic Structure Information	25
3.8 Significant Flora Survey	28
3.9 Groundwater Dependent Ecosystems	29
3.10 Data Analysis	30
3.11 Targeted Flora Survey Methodology	31
3.12 Fauna Assessment	35
3.13 Habitat Assessments	41
3.14 Survey Dates, Type and Prevailing Conditions	42
3.15 Limitations	44
4 RESULTS	47
4.1 Flora	47
4.1.1 Vegetation Community Delineation	47
4.1.2 Description of Vegetation Communities	50
4.1.3 Conservation Status of Vegetation Communities	61
4.1.4 Regionally Significant Vegetation Communities	61

4.1.5	Regionally Significant Flora Species	62
4.1.6	Desktop Assessment - Threatened Flora Search Results	62
4.1.7	Threatened Flora Species with potential to occur	63
4.1.8	Targeted Threatened Flora Species Survey Results	64
4.1.9	Groundwater Dependent Ecosystems	69
4.2	Fauna	72
4.2.1	NPWS Threatened Species Database Search Results	72
4.2.2	Regionally Significant Fauna Species	75
4.2.3	Terrestrial Mammals	75
4.2.4	Arboreal Mammals	76
4.2.5	Bats	76
4.2.6	Avifauna	76
4.2.7	Amphibians	78
4.2.8	Reptiles	78
4.3	Habitat Survey	79
4.3.1	Flora Habitat	79
4.3.2	Fauna Habitat	80
4.4	Habitat Mapping	84
5	DEVELOPMENT & CONSERVATION OUTCOMES	86
6	ENVIRONMENTAL IMPACT ASSESSMENT	90
6.1	Identification of Threatened Species, Populations and Ecological Communities	90
6.2	Assessment of Threatened Species, Populations and Ecological Communities	103
6.2.1	Threatened Flora	104
6.2.2	Endangered Ecological Communities	108
6.2.3	Threatened Fauna	109
6.2.4	Additional Threatened Fauna Species	115
6.3	Key Threatening Process (KTP)	116
6.4	SEPP 44 (Koala Habitat Protection)	120
6.4.1	First Consideration – Is the Land ‘Potential Koala Habitat’?	120
6.4.2	Second Consideration – Is the Land ‘Core Koala Habitat’?	121
6.5	SEPP 14 (Coastal Wetlands)	122
6.6	Groundwater Dependant Ecosystem’s	122
6.7	Corridors	123
6.8	Environmental Management & Impact Mitigation	124
7	KEY THRESHOLDS ASSESSMENT (PART 3A)	129
7.1	Offsetting Principles (Lower Hunter Regional Conservation Plan: Appendix 1)	130
8	RECOMMENDATIONS	137
9	CONCLUSION	139
10	BIBLIOGRAPHY	141

Figures

Figure 1-1: Coal & Allied Surplus Lands	5
Figure 1-2: Northern Estates	6
Figure 1-3: Site Location	7
Figure 1-4: Lower Hunter Regional Conservation Plan	8
Figure 1-5: Concept Plan	9
Figure 1-6: Land Transfer Plan	10
Figure 3-1: Flora Survey Locations	26
Figure 3-2: Random Meander Survey Locations	27
Figure 3-3: Targeted Threatened Flora Survey Location	34
Figure 3-4: Fauna Survey Locations	39
Figure 3-5: Koala Survey Locations	40
Figure 4-1: Scree Plot of Bray Curtis Association Measure Results	48
Figure 4-2: Dendrogram showing vegetation communities and dissimilarity association for the Northern Lands	49
Figure 4-3: Vegetation Map	52
Figure 4-4: Distribution of <i>Tetratheca juncea</i>	68
Figure 4-5 : Groundwater Dependent Ecosystems	71
Figure 4-6: Habitat Condition Mapping	85

Tables

Table 3-1: Threatened Flora Species Techniques Analysis	28
Table 3-2: Ecological / Environmental Attributes Collected within Flora Survey Points	41
Table 3-3: Development Estate Survey Dates, Types & Prevailing Weather	42
Table 4-1: Known distribution of <i>Tetratheca juncea</i> within the region and known Conservation Areas	65
Table 4-2: GDE's Types and Classes for Link Road Minmi Development Estate	70
Table 4-3: Dominant Tree Species and Flowering Period	80
Table 5-1: Vegetation Removal / Retention	89
Table 5-2: Habitat Removal / Retention	89
Table 6-1: Threatened Species Assessment	91

Appendices

APPENDIX 1

DGEAR's

APPENDIX 2

Conservation Estate Ecological Inventory Report

APPENDIX 3

Flora Species List

APPENDIX 4

Fauna Species List

APPENDIX 5

Vegetation Communities Photographs

APPENDIX 6

Qualifications of Personnel

APPENDIX 7

EPBC Act Approval

I Introduction

RPS has been commissioned by Coal & Allied Industries Limited (Coal & Allied) to undertake an *Ecological Assessment Report* (EAR) over land within Minmi and Link Road. The proposal is to be assessed under Part 3A of the *Environmental Planning and Assessment Act 1979*. Due recognition and consideration of the *Threatened Species Conservation Act 1995*, *Water Management Act 2000* and the *Fisheries Management Act 1994* have been made throughout this assessment.

1.1 Background

Harper Somers O'Sullivan (2005) has previously undertaken Preliminary Vegetation Mapping over various holdings administered by Coal & Allied in the Lower Hunter Valley / Central Coast Region. This preliminary mapping was undertaken to provide a baseline dataset pertaining to the broad-scale distribution of ecological communities throughout the land holdings. This assessment was largely undertaken at a desktop level relying on aerial photography combined with existing regional mapping datasets and limited ground-truthing.

Between January 2007 – April 2010 ecological investigations were undertaken to inform the urban design and NSWG assessment process.

These investigations were intended to provide a brief assessment of the conservation status of previously delineated vegetation communities.

The report herewith builds on the existing dataset, and provides the necessary level of detailed information for the assessment of the proposals under relevant legislation.

1.2 Site Particulars

Locality – The proposed Development Estate is on the eastern side of the F3 freeway between the Newcastle Link Road and surrounds the suburb of Minmi. The site encompasses lands owned by Coal & Allied, which occur largely to the south-west of Fletcher.

LGAs – Newcastle City Council and Lake Macquarie City Council.

Title(s) – Lot 71 DP 1065169, Lot 352 DP 1108608 (formerly Lot 35 DP 800036), Lot 6 DP 1044574, Lots 2 and 3 DP 877349.

Area – The area of the proposed Development Estate is approximately 520 hectares.

Zoning – Newcastle LEP Zones 2(a) Residential, 7(b) Environmental Protection, 7(c) Environmental Investigation. Lake Macquarie - 7(2) Conservation (Secondary), 5 Infrastructure and 10 Investigation Zone

Boundaries – The site is bounded to the west by the F3 freeway and the east by the suburb of Fletcher. To the north and north-east is conservation land which includes Blue Gum Hills Regional Park and to the south, the majority of the land is bounded by the Newcastle Link Road, with a section of land to the south of this road.

Current Land Use – Currently some parts of the proposed development site are being used for rural or grazing purposes. The remainder of the site is natural bushland with weed infestations evident, particularly in the drainage lines and gullies.

Topography – The Development Estate occurs across undulating topography to the west of Wallsend. In the south it straddles eastern foothills of the Sugarloaf Range and encompasses the watersheds of south-western feeder creeks of the Hexham flood plain, including the lower reaches of Minmi Creek. Lands in the south occur both sides of an east – west ridge with moderately steep flanks encompassing the water sheds of drainage lines flowing to the north and south respectively. To the northeast of Minmi the Development Estate is perched upon low ridges to the west of Fletcher that encompasses westward sloping land and ultimately the lower drainage lines to the east of Minmi.

Soils and Geology - There are three different categories of soils across the site according to Soils Landscapes of the Newcastle region (Matthei 2005).

The majority of the soil across the site is classified as Killingworth. This soil type is typical across the rolling hills around Minmi. This type of soil has low to very low fertility and high erosion potential. The topsoils of this classification are typically brownish black sand or silt loams and the subsoils are usually sand or silt clays.

A small area on the eastern side of the site closest to the Minmi and Fletcher area has two different soil types. These are the Beresfield and Bobs Farm classification.

The Beresfield soil type is typically low in fertility, highly acidic and has a high foundation hazard potential due to the shrink-swell nature of the subsoil.

The Bobs Farm classification is the soil type associated with the estuarine flats of the Tomago region. These soils generally have a high foundation hazard potential due to localised water logging and shrink-swell subsoils.

The majority of the Development Estate is underlain by the Newcastle Coal Measures of Permian Age with the northern section including Tank Paddock is underlain by the Tomago Coal Measures of Permian Age.

1.3 Description of the Proposal

It is proposed that the entire Coal & Allied owned Minmi/Link Road and Stockrington sites be rezoned/listed as a 'State Significant Site' (SSS) in Schedule 3 of State Environmental Planning Policy (Major Development). A draft Schedule 3 listing will be prepared with the Concept Plan Application.

The development and conservation of the Coal & Allied land holdings, has been collectively classified into 'Southern Lands' and 'Northern Lands' (Refer to Figure 1-1). The Northern Lands encompass the Minmi Link Road and Black Hill Development Estates and the Stockrington and Tank Paddock Conservation Estates. Refer to Figure 1-1, Figure 1-2 and Figure 1-3.

The Concept Plan for a residential subdivision of the Minmi/Link Road site will apply to the entire 537ha Minmi/Link Road and for a conservation corridor to the 1561ha Stockrington site. The key parameters for the proposed development of the site are as follows:

- Dedication of 1561ha of conservation land to the New South Wales Government (NSWG) that is identified in the Lower Hunter Regional Strategy and Lower Hunter Regional Conservation Plan, comprising 1544ha of the Stockrington site and approximately 17ha of the Minmi/Link Road site.
- Approx dwelling yield of 3,300 dwellings over 520ha.
- Indicative development staging. The number of lots and extent of staging for release areas will be largely dictated by the service infrastructure requirements as well as responding to market forces.
- The provision of associated infrastructure.
- Torrens title subdivision of the Minmi/Link Road site. The Torrens title subdivision of Coal & Allied land will enable the following:
 - » To dissect land on either side of the F3 Freeway and to separate the development lot from the conservation land.
 - » To enable the transfer of approximately 17ha of land at Minmi/Link Road to the North of the Minmi Rural Fire shed to NSWG for conservation purposes.

Approval will not be sought under the Concept Plan for a specific lot or road layout. An indicative lot layout will indicate how the approx dwelling yield of 3,300 dwellings could be achieved on the site.

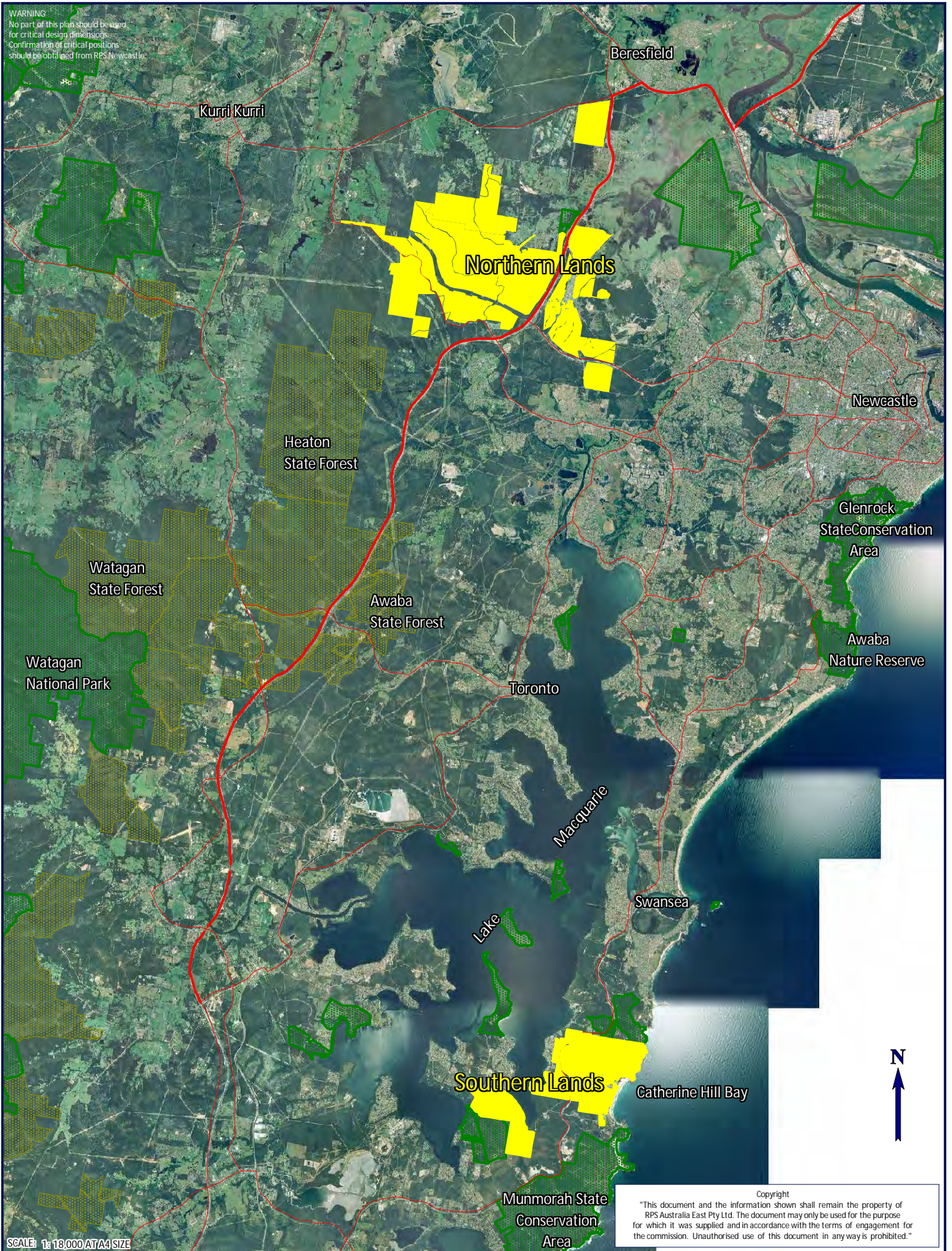
Similarly, approval will not be sought under the Concept Plan for subdivision or construction of individual houses. However, the desired future character of the proposed concept plan will be included in Urban Design Guidelines. Urban Design Guidelines will be prepared to inform the Concept Plan in respect of urban form, built form, open space and landscape, access and movement and visual impact for the site.

It is proposed to dedicate land for conservation purposes as part of the Major Project Application via a Voluntary Planning Agreement (VPA) between Coal & Allied and the NSWG in accordance with s.93F of the Environmental Planning & Assessment Act, 1979 (EP&A Act). Notably the Conservation Estates are identified in the LHRCP prepared by the DECCW and make significant contributions toward meeting conservation goals identified in the LHRCP. Refer to Figure 1-4.

A Concept Plan has been prepared for Minmi-Link Road which will enable key site

parameters associated with land use, infrastructure delivery and timing, and environmental conservation to be resolved up front, with subsequent detailed stages being submitted for approval progressively. Refer to Figure 1-5 and Figure 1-6.

WARNING
 No part of this plan should be used for critical design dimensions. Confirmation of critical positions should be obtained from RPS Newcastle.



SCALE: 1:18,000 AT A4 SIZE

Copyright
 "This document and the information shown shall remain the property of RPS Australia East Pty Ltd. The document may only be used for the purpose for which it was supplied and in accordance with the terms of engagement for the commission. Unauthorised use of this document in any way is prohibited."

TITLE: FIGURE 1-1 COAL & ALLIED SURPLUS LANDS

LOCATION: HUNTER REGION

DATUM: N/A
 PROJECTION: MGA ZONE 56 (GDA 94)





DATE: 7/02/2011
 PURPOSE: EAR

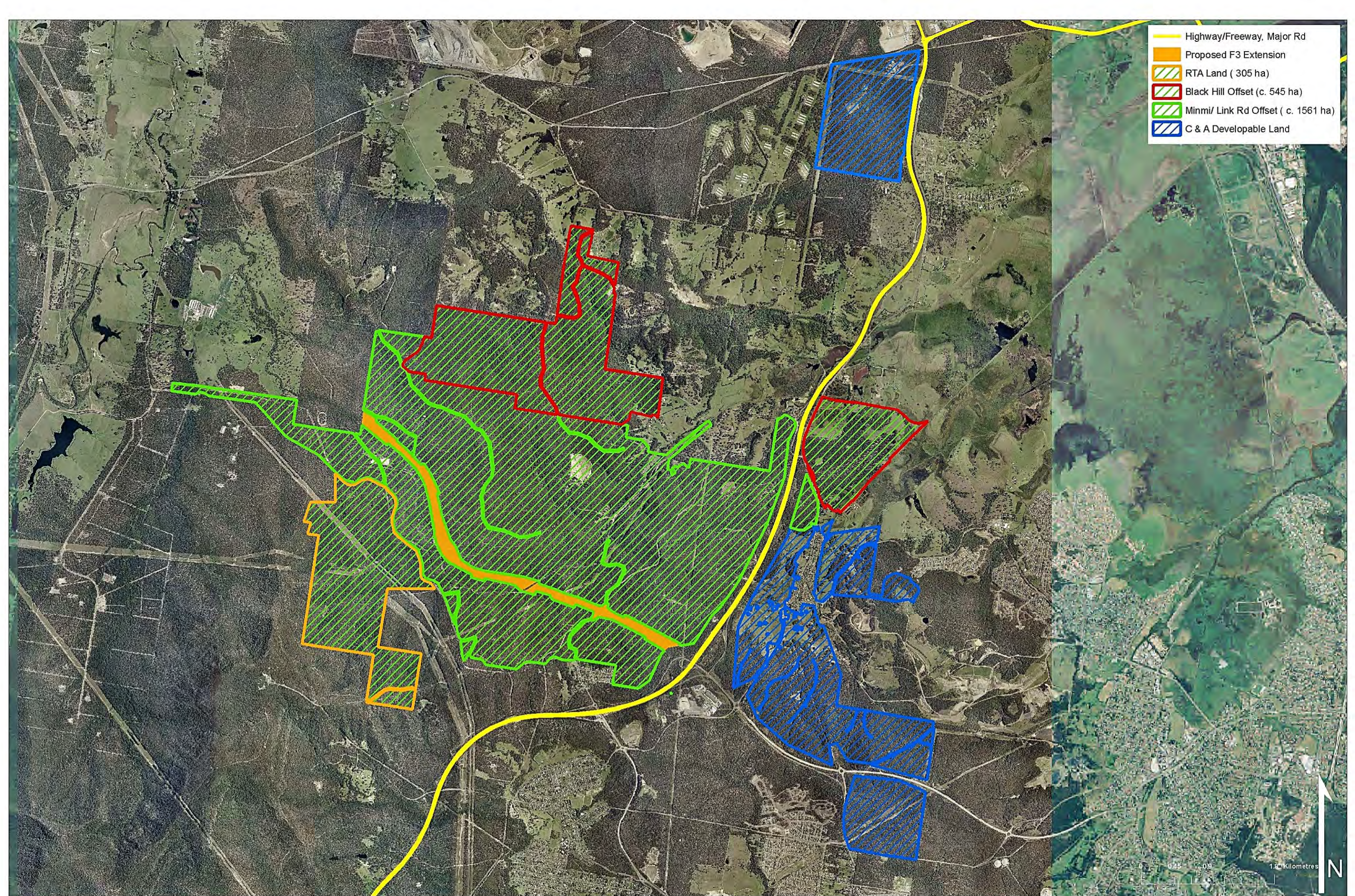
LAYOUT REF: J:\OBS\24k\24530 Hunter Valley\2010 Works\Drafting
 VERSION (PLAN BY): C (A.P.-M.D)

CLIENT: COAL & ALLIED INDUSTRIES PTY LTD
 JOB REF: 24530-2

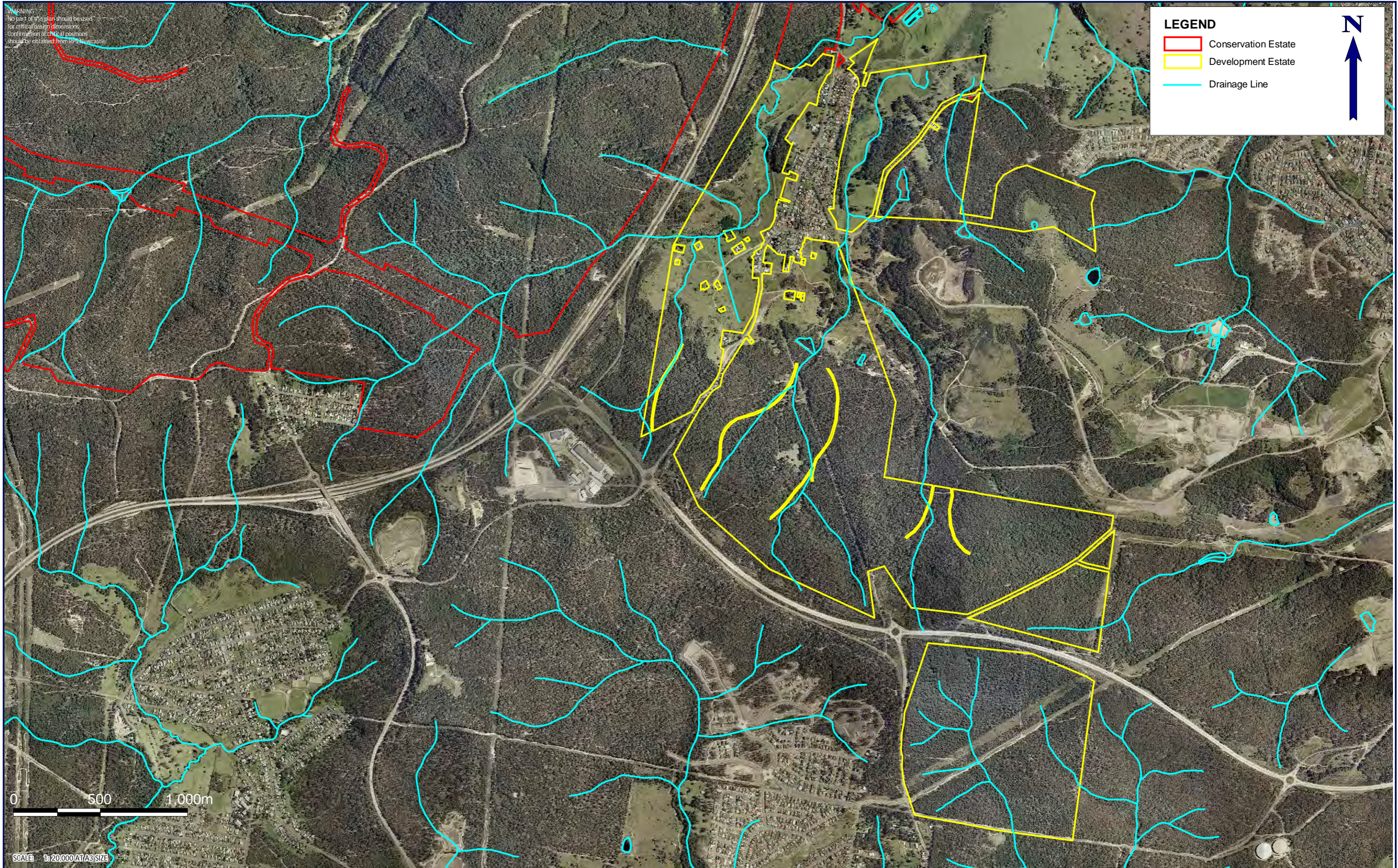
RPS AUSTRALIA EAST PTY LTD (ABN 44 140 292 762)
 241 DENISON STREET BROADMEADOW PO BOX 428 HAMILTON NSW 2303
 T: 02 4940 4200 F: 02 4961 6794 www.rpsgroup.com.au



-  Highway/Freeway, Major Rd
-  Proposed F3 Extension
-  RTA Land (305 ha)
-  Black Hill Offset (c. 545 ha)
-  Minmi/ Link Rd Offset (c. 1561 ha)
-  C & A Developable Land



NORTHERN AREA- FINAL DEVELOPMENT AND CONSERVATION AREAS



TITLE: FIGURE 1-3 SITE LOCATION MINMI LINK ROAD

LOCATION: MINMI-LINK ROAD

DATUM: N/A
PROJECTION: MGA ZONE 56 (GDA 94)

DATE: 19/10/2010
PURPOSE: EAR

LAYOUT REF: J:\JOBS\244\24530 Hunter Valley\2010 ... Drafting\Ecology\Northern Lands\MLRV
VERSION (PLAN BY): C A3 (AP-MD-NW)

Copyright
This document and the information shown shall remain the property of RPS Australia East Pty Ltd. The document may only be used for the purpose for which it was supplied and in accordance with the terms of engagement for the commission. Unauthorised use of this document in any way is prohibited.

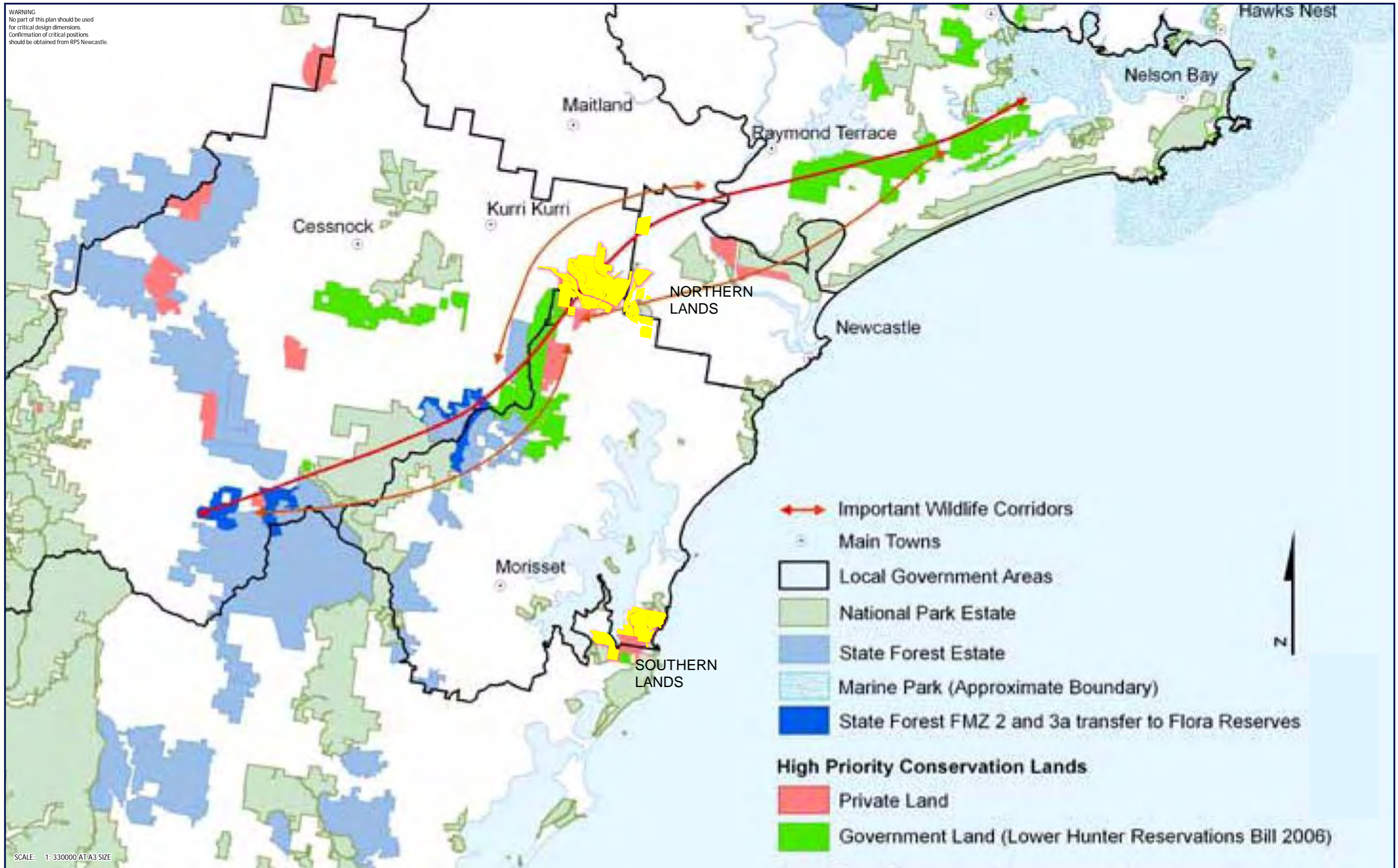
CLIENT: Coal & Allied Industries Ltd
JOB REF: 24530-2

RPS AUSTRALIA EAST PTY LTD (ABN 44 140 292 762)
241 DENISON STREET BROADMEADOW PO BOX 428 HAMILTON NSW 2303
T: 02 4940 4200 F: 02 4961 6794 www.rpsgroup.com.au

creativepeople
making a difference.

RPS

WARNING
 No part of this plan should be used
 for critical design dimensions.
 Confirmation of critical positions
 should be obtained from RPS Newcastle.



SCALE: 1:330000 AT A3 SIZE

TITLE: FIGURE 1-4 LOWER HUNTER REGIONAL CONSERVATION PLAN

LOCATION: HUNTER REGION

DATUM: N/A
 PROJECTION: MGA ZONE 56 (GDA 94)

DATE: 7/02/2011
 PURPOSE: EAR

24530\DRAWING\VECOLOGY\SOUTHERNALLWORKSPACES
 LAYOUT REF: 2010TEMPLATE\FIGURE 1-4 LHRCP 2010 C A3
 VERSION (PLAN BY): C A3 (A.P.M.D)

Copyright
 This document and the information shown shall remain the property of RPS Australia East Pty Ltd.
 The document may only be used for the purpose for which it was supplied and in accordance with
 the terms of engagement for the commission. Unauthorised use of this document in any way is prohibited.

CLIENT: Coal & Allied Industries Ltd
 JOB REF: 24530-2

RPS AUSTRALIA EAST PTY LTD (ABN 44 140 292 762)
 241 DENISON STREET BROADMEADOW PO BOX 428 HAMILTON NSW 2303
 T: 02 4940 4200 F: 02 4961 6794 www.rpsgroup.com.au

creativepeople
 making a difference

RPS