

Open Space

The proposed Public Open Space total's approximately 26 hectares (refer Figure B.1.3.2) and includes the following:

- existing Viney Creek watercourse and the Core Riparian Zone
- combined cycle/pedestrian link that connects internal open space edge roads and runs along the length of Viney Creek as shown in Figure B.1.3.3
- some of the proposed detention basins for stormwater treatment
- proposed passive open space facilities, such as picnic shelters, seating and viewing areas

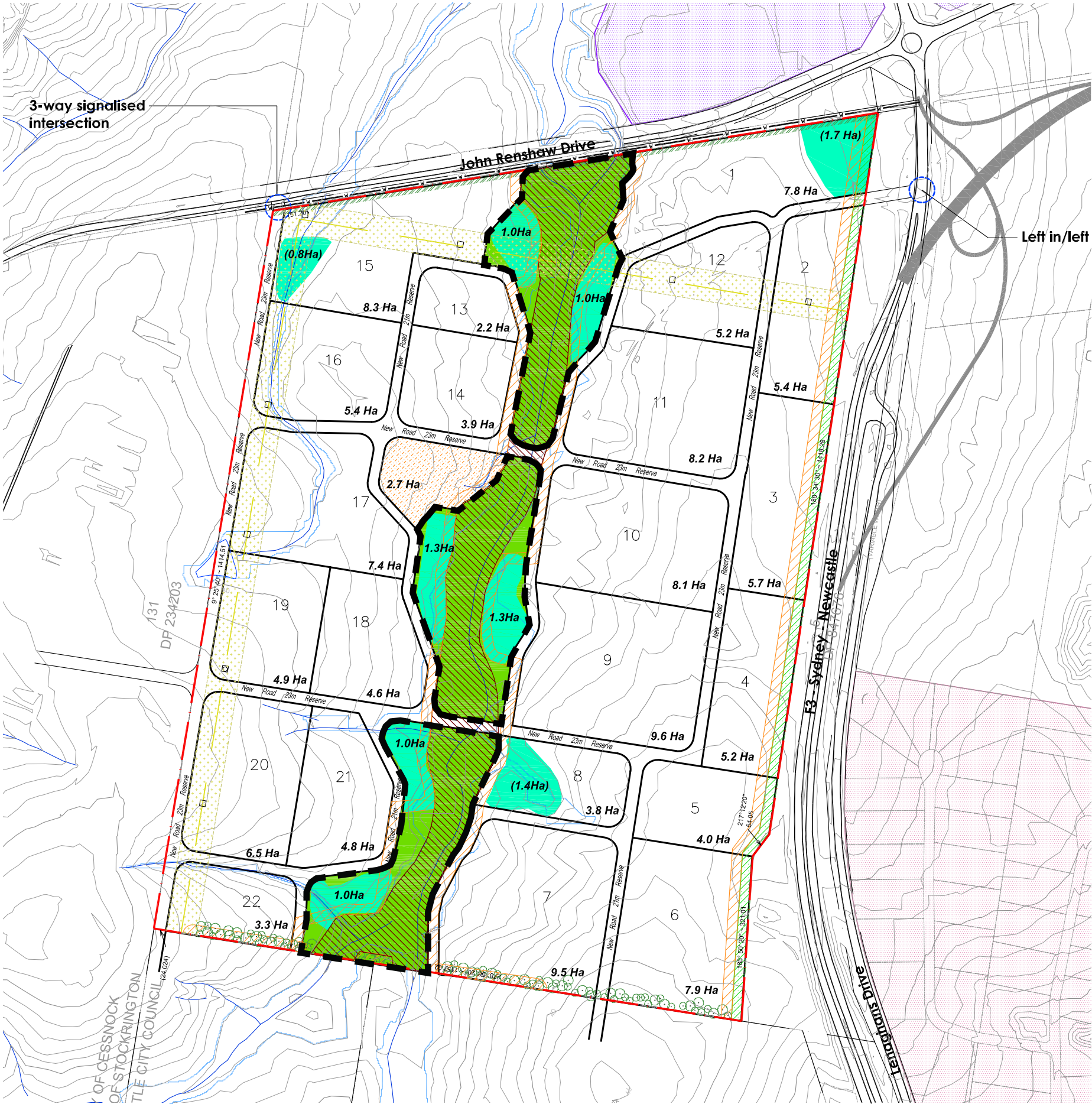
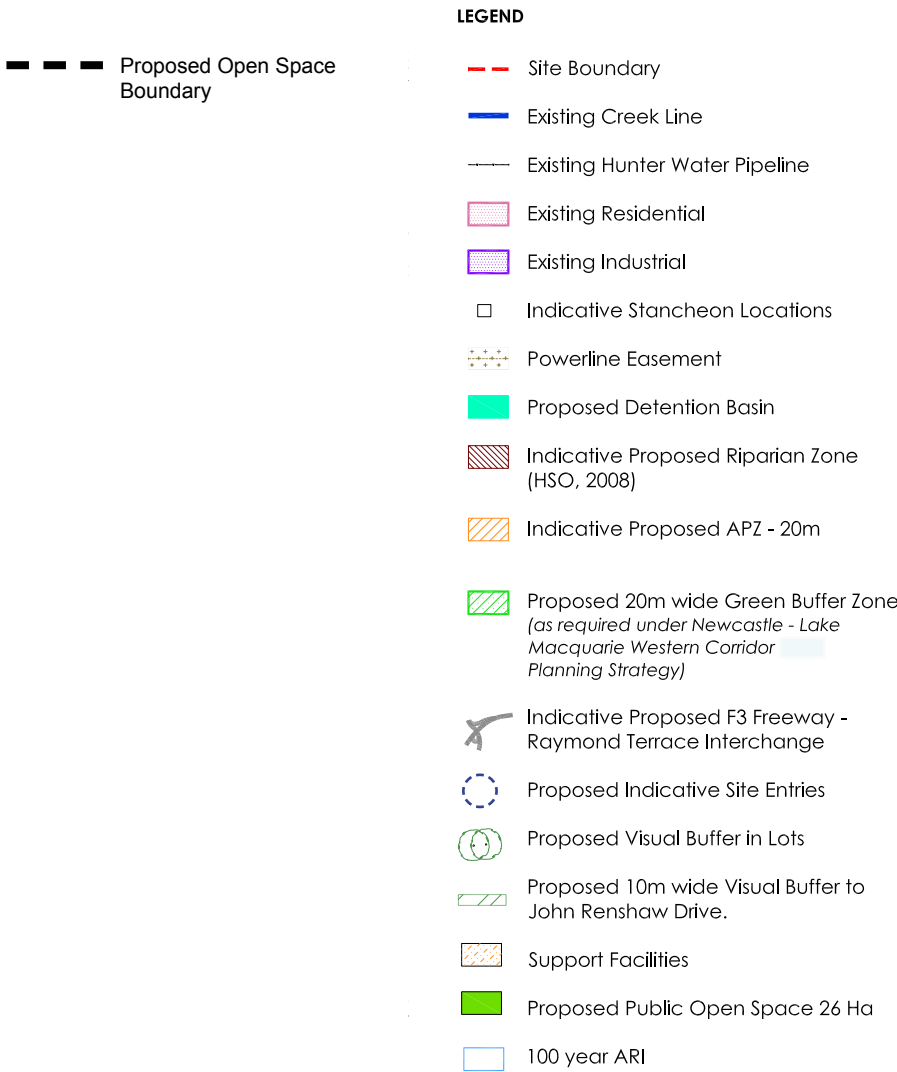


Figure B.1.3.2. Proposed Open Space Plan

Pedestrian and Cycle

The proposed pedestrian and cycle network (refer Figure B.1.3.3) includes the following:

- Proposed off-road shared cycle and pedestrian path of 2.5m along the open space spine in Viney Creek
- Collector roads with off-road shared cycle and pedestrian path of 2.5m within the verge on one side of the road.
- Proposed on-road cycle along John Renshaw Drive.

Legend

- proposed off road shared pedestrian / cycle path of 2.5m
- collector road with off road 2.5m shared pedestrian / cycle within verge on one side of road
- existing on-road cycle (NCC)
- proposed on-road cycle along John Renshaw Drive
- proposed open space
- indicative proposed riparian zone (HSO, 2008)

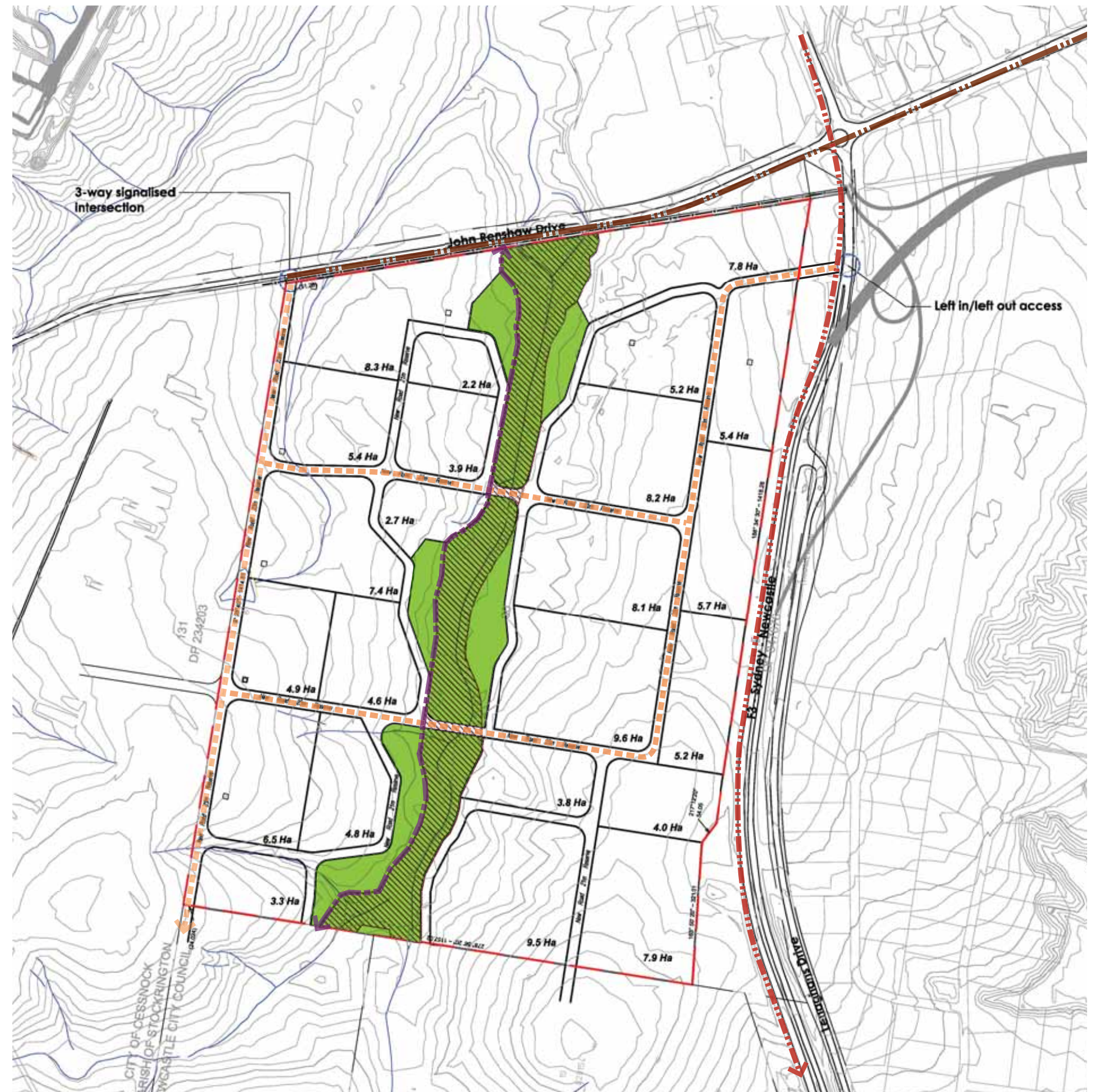


Figure B.1.3.3. Proposed Pedestrian and Cycle Plan

Asset Protection Zones (APZ)

The proposed APZ locations are shown highlighted on Figure B.1.3.4, and includes the following:

- 20m wide APZ in development lots to the visual buffer to the F3
- 20m wide APZ in development lots against parts of the southern boundary.
- 20m wide APZ to core riparian zone along Viney Creek. This has been located on proposed road, private lots or in detention basins within the proposed public open space network.

 Indicative Proposed 20m APZ's

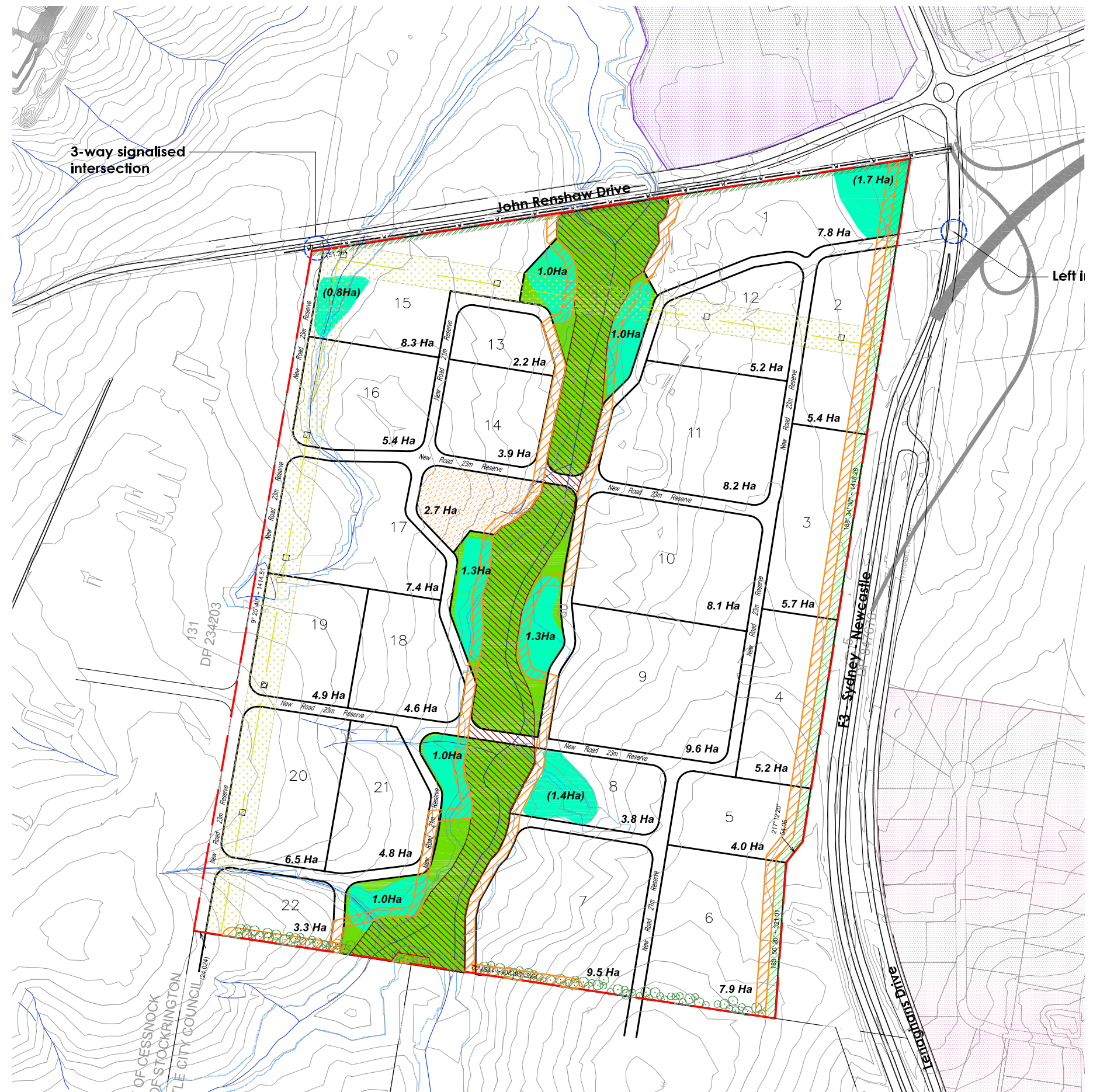


Figure B.1.3.4. Proposed APZ Plan