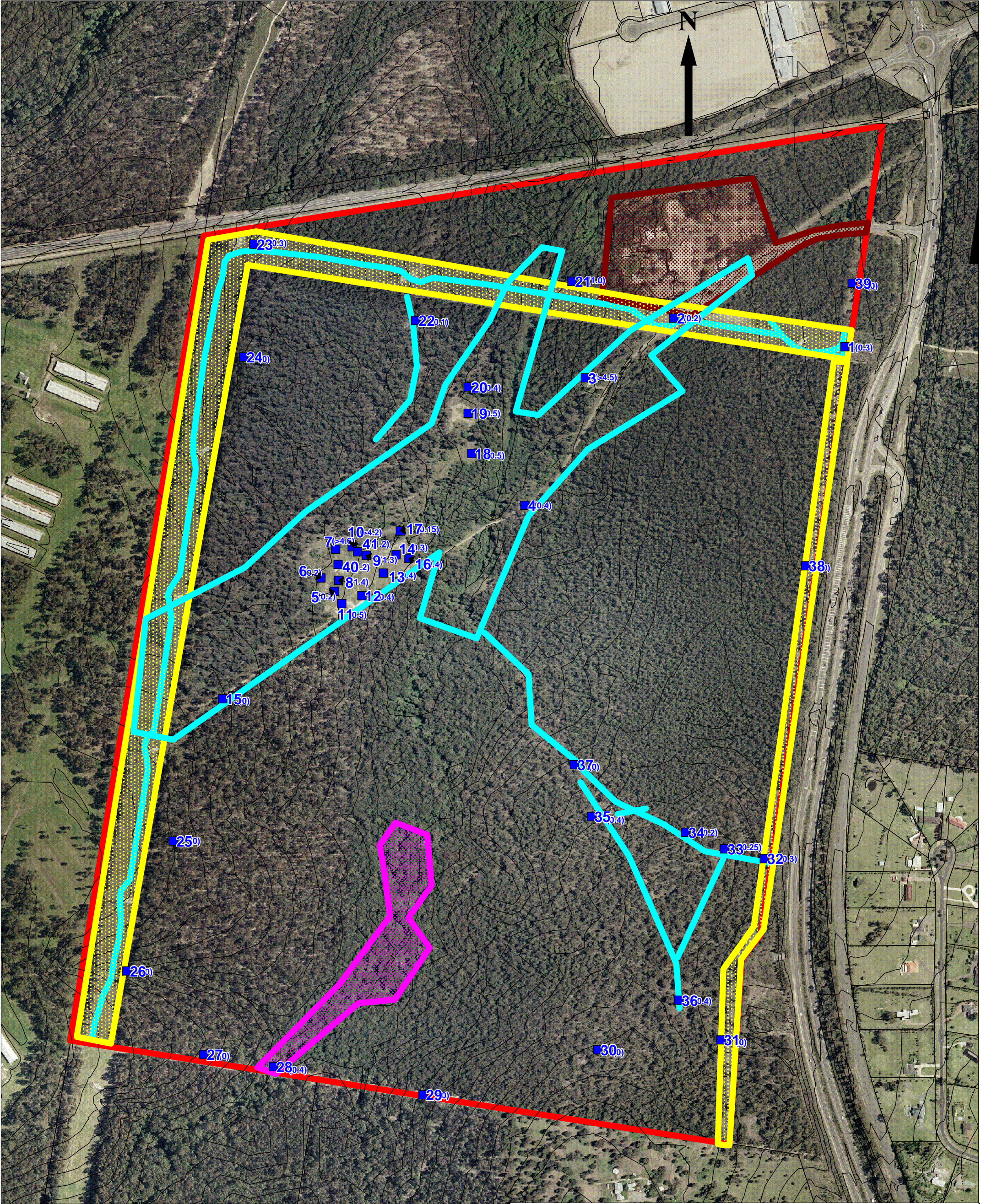

APPENDIX D

***DRAWING 1 – TEST PIT LOCATIONS AND
SURFACE FEATURES***

***DRAWING 2 – 1974 AERIAL PHOTOGRAPH OF FORMER
IRONBARK COLLIERY AND TEST LOCATIONS***

DRAWING 3 – PROPOSED ABEL MINE PLAN



Legend

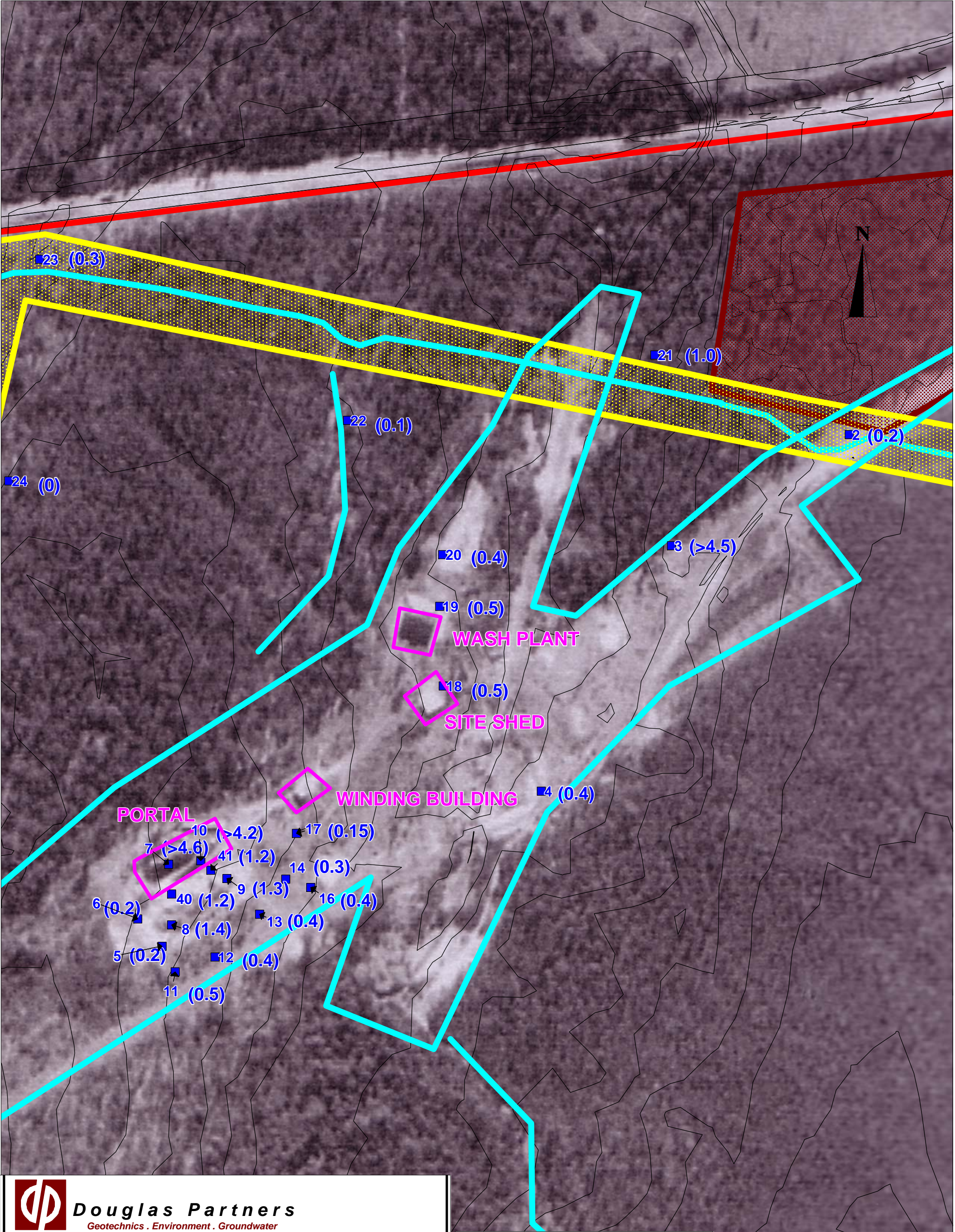
- Approximate Test Pit Location
- Access Tracks
- Former Ironbark Colliery
- Cleared Ground (Electricity Easements)
- Boral Asphalt Site
- Creek




Douglas Partners
Geotechnics . Environment . Groundwater

TITLE:
Test Location Plan
Preliminary Geotechnical, Contamination and Mine Subsidence Assessment
Proposed Employment Development
Black Hill

CLIENT: Coal & Allied Industries Ltd			
DRAWN BY: PWW	SCALE: 1:6000	PROJECT No: 39664.03	OFFICE: Newcastle
APPROVED BY:		DATE:	DRAWING No: 1





Douglas Partners

Geotechnics . Environment . Groundwater

TITLE:
1974 Aerial Photograph of Former Ironbark Colliery and Test Locations
Preliminary Geotechnical, Contamination and Mine Subsidence Assessment
Proposed Employment Development
Black Hill

CLIENT: Coal & Allied Industries Limited

DRAWN BY:EMG

SCALE:1:3000

PROJECT No39664A


OFFICENewcastle


APPROVED BY:


DATE:

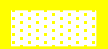
DRAWING No: 2


Legend

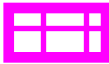
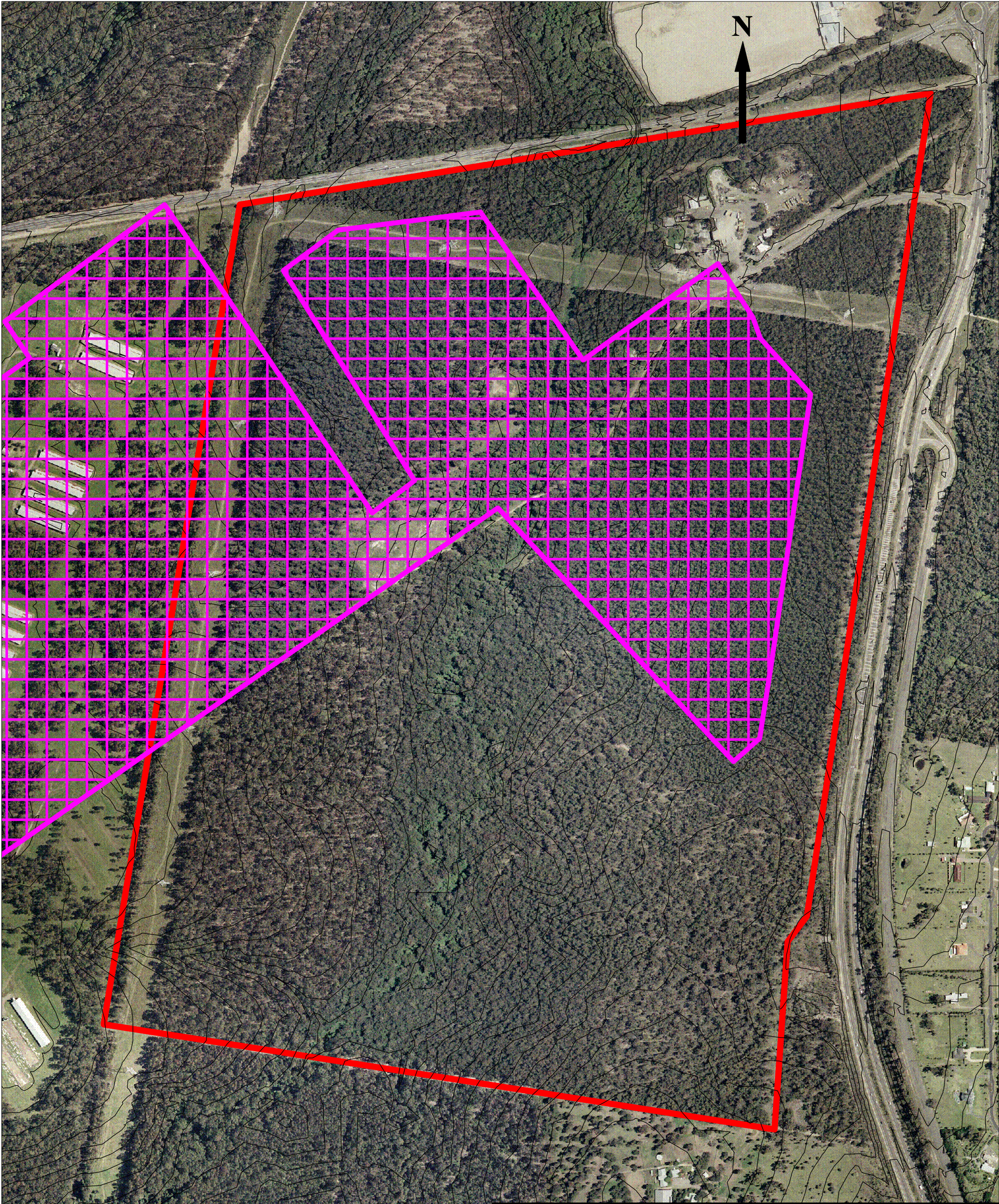
 Approximate Test Pit Location

 Access Tracks

 Former Ironbark Colliery

 Cleared Ground (Electricity Easments)

 Boral Asphalt Site



Extent of Mining as Proposed by
Abel Mine SMP Application March 2010



Douglas Partners
Geotechnics . Environment . Groundwater

TITLE:
Proposed Abel Mine Plan
Preliminary Geotechnical, Contamination and Mine Subsidence Assessment
Proposed Employment Development
Black Hill

CLIENT: Coal & Allied Industries Ltd			
DRAWN BY: EMG	SCALE: 1:6000	PROJECT No: 39664.03	OFFICE: Newcastle
APPROVED BY:	DATE:	DRAWING No:	3