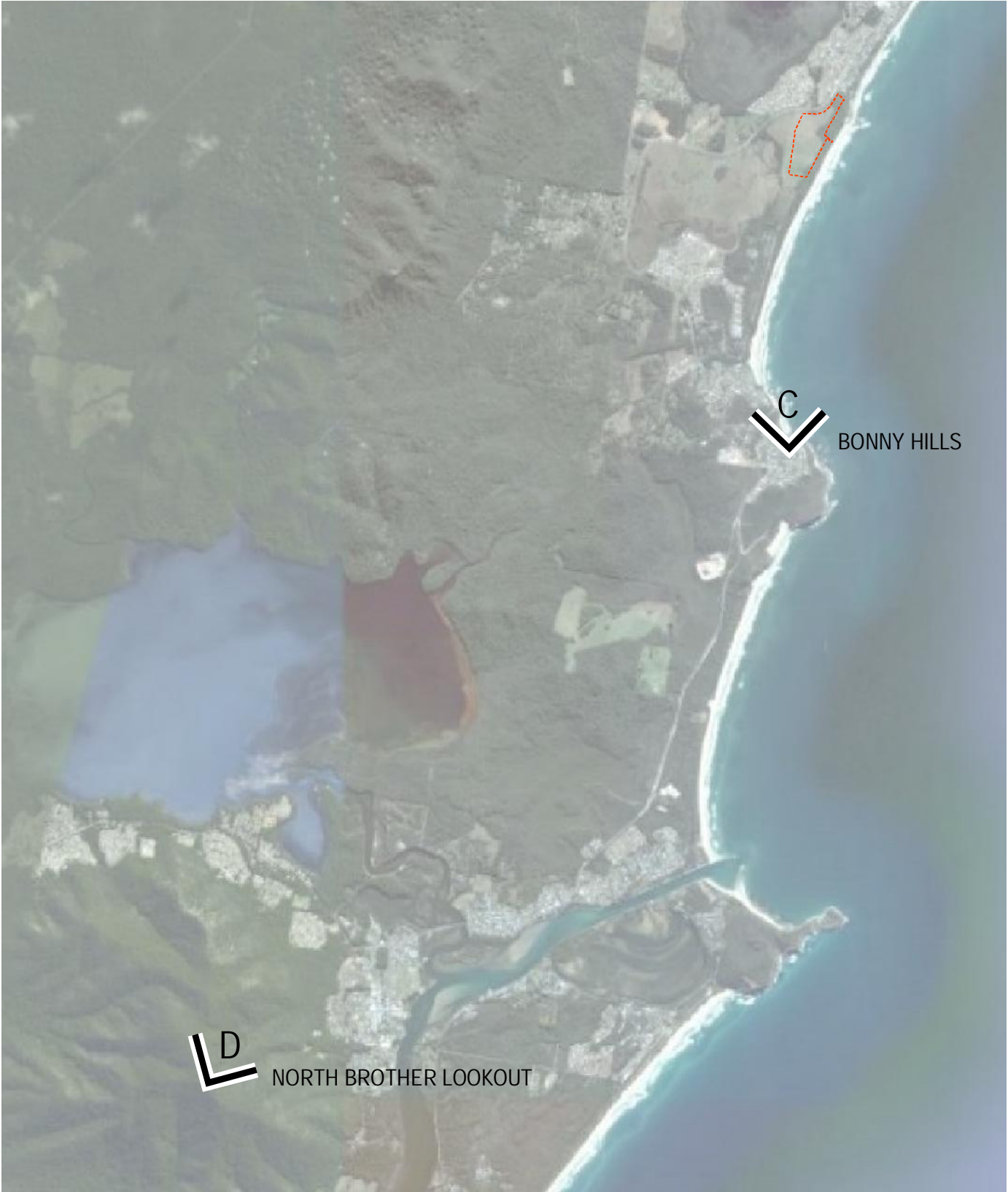




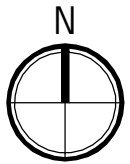
LEGEND

- EXTENT OF CONCEPT PLAN APPLICATION
- EXISTING CADASTRAL BOUNDARIES



CAUTION

This plan has been prepared for the purpose of a concept plan application. the information shown herein is only reliable for the above purpose. It should not therefore be used for any other purpose without verification.



KING + CAMPBELL

King & Campbell Pty Ltd
www.kingcampbell.com.au
A: PO Box 243 Port Macquarie NSW 2444
T: 02 6586 2555
F: 02 6583 4064
E: info@kingcampbell.com.au

REV.	DATE	DESCRIPTION
A	24.03.2010	ISSUED FOR INFORMATION
B	28.06.2010	ISSUED FOR EA
C	07.07.2010	ISSUED FOR EA
D	15.02.2011	ISSUED FOR EA - SUBMISSIONS REPORT

DATUM: AHD SCALE: NOT TO SCALE

NOTE: DO NOT SCALE OFF DRAWINGS. USE FIGURED DIMENSIONS ONLY. REPORT ANY DISCREPANCIES TO THE AUTHOR. THIS DRAWING, BEING THE PROPERTY OF KING & CAMPBELL PTY LTD IS PROTECTED BY COPYRIGHT AND MUST NOT BE USED, REPRODUCED OR COPIED WHOLLY OR IN PART WITHOUT THE WRITTEN PERMISSION OF KING & CAMPBELL PTY LTD.

© King & Campbell Pty Ltd

PROJECT NO:	4898	DRAWING TITLE:	EXHIBIT 09A: PHOTO LOCATIONS FOR VIEW ANALYSIS		
DA NO:		PROJECT:	LOT 1 DP 374315 & LOT 4 DP615261 OCEAN DRIVE, PORT MACQUARIE		
DESIGNED BY:	DAT	CLIENT:	MILLAND PTY LTD & SEAWIDE PTY LTD		
DRAWN BY:	DV				
CHECKED BY:	KM				
DATE CREATED:	FEB 2010				
			DRAWING NO:	SHEET:	REVISION:
			4898P_Exhibits.dwg	1	D

L:\14898_MILLAND_SEAWIDE\Planning\Photoshop\Exhibits 2010.03.15\14898_Exhibit_9B_View_Analysis_Sheet_1.psd



VIEW A: VIEW FROM OCEAN DRIVE ON APPROACH TO THE SITE FROM THE NORTH

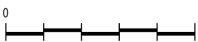
KING + CAMPBELL

King & Campbell Pty Ltd
www.kingcampbell.com.au
A: PO Box 243 Port Macquarie NSW 2444
T: 02 6586 2555
F: 02 6583 4064
E: info@kingcampbell.com.au

REV.	DATE	DESCRIPTION
A	24.03.2010	ISSUED FOR INFORMATION
B	28.06.2010	ISSUED FOR E.A.
C	07.07.2010	ISSUED FOR E.A.

DATUM: AHD

SCALE:



NOTE: DO NOT SCALE OFF DRAWINGS. USE FIGURED DIMENSIONS ONLY. REPORT ANY DISCREPANCIES TO THE AUTHOR. THIS DRAWING, BEING THE PROPERTY OF KING & CAMPBELL PTY LTD, IS PROTECTED BY COPYRIGHT AND MUST NOT BE USED, REPRODUCED OR COPIED WHOLLY OR IN PART WITHOUT THE WRITTEN PERMISSION OF KING & CAMPBELL PTY LTD.

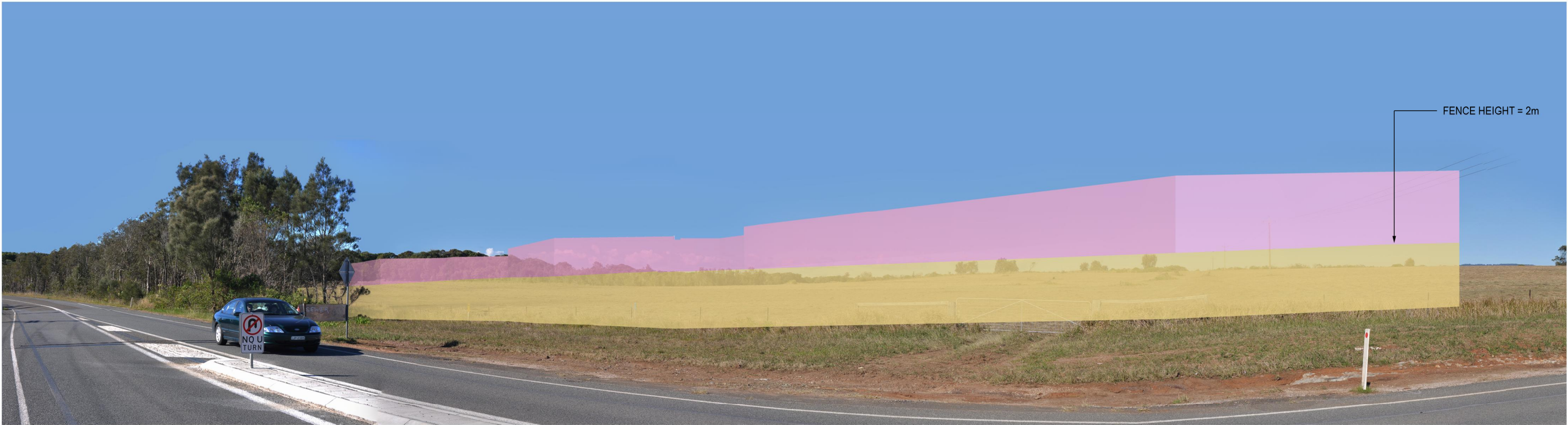
© King & Campbell Pty Ltd

PROJECT NO:	14898	DRAWING TITLE:	EXHIBIT 09B: VIEW ANALYSIS (SHEET 1)				
DA NO.:	-						
DESIGNED BY:	DAT	PROJECT:	LOT 1 DP 374315 & LOT 4 DP 615261 OCEAN DRIVE, PORT MACQUARIE				
DRAWN BY:	PH						
CHECKED BY:	DAT	CLIENT:	MILAND PTY LTD & SEAWIDE PTY LTD		DRAWING NO:	SHEET:	REVISION:
DATE CREATED:	MAR. 2010				14898_Exhibit_9B_View_Analysis_Sheet_1.psd	1	C

L:\14898_MILLAND_SEAWIDE\Planning\Photoshop\Exhibits 2010.03.15\14898_Exhibit_9B_View_Analysis_Sheet_2.psd



BEFORE



AFTER
VIEW B: VIEW FROM THE MEDICAL CENTRE ENTRY ON OCEAN DRIVE TO THE SITE

KING + CAMPBELL

King & Campbell Pty Ltd
www.kingcampbell.com.au
A: PO Box 243 Port Macquarie NSW 2444
T: 02 6586 2555
F: 02 6583 4064
E: info@kingcampbell.com.au

REV.	DATE	DESCRIPTION
A	24.03.2010	ISSUED FOR INFORMATION
B	28.06.2010	ISSUED FOR E.A.
C	07.07.2010	ISSUED FOR E.A.

DATUM: AHD SCALE:
0
[Scale bar showing 0 to 100m]
NOTE: DO NOT SCALE OFF DRAWINGS. USE FIGURED DIMENSIONS ONLY. REPORT ANY DISCREPANCIES TO THE AUTHOR. THIS DRAWING, BEING THE PROPERTY OF KING & CAMPBELL PTY LTD, IS PROTECTED BY COPYRIGHT AND MUST NOT BE USED, REPRODUCED OR COPIED WHOLLY OR IN PART WITHOUT THE WRITTEN PERMISSION OF KING & CAMPBELL PTY LTD.
© King & Campbell Pty Ltd

PROJECT NO:	14898	DRAWING TITLE:	EXHIBIT 09B: VIEW ANALYSIS (SHEET 2)			
DA NO.:	-					
DESIGNED BY:	DAT	PROJECT:	LOT 1 DP 374315 & LOT 4 DP 615261 OCEAN DRIVE, PORT MACQUARIE			
DRAWN BY:	PH					
CHECKED BY:	DAT	CLIENT:	MILAND PTY LTD & SEAWIDE PTY LTD	DRAWING NO.	SHEET:	REVISION:
DATE CREATED:	MAR. 2010			14898_Exhibit_9B_View_Analysis_Sheet_2.psd	1	C

L:\14898_MILLAND_SEAWIDE\Planning\Photoshop\Exhibits 2010.03.15\14898_Exhibit_9B_View_Analysis_Sheet_3.psd



VIEW C: VIEW FROM THE HEADLAND AT BONNY HILLS ON OCEAN DRIVE NORTH TO THE SITE



VIEW D: VIEW FROM NORTH BROTHER LOOKOUT NORTH-EAST TO THE SITE

KING + CAMPBELL

King & Campbell Pty Ltd
www.kingcampbell.com.au
A: PO Box 243 Port Macquarie NSW 2444
T: 02 6586 2555
F: 02 6583 4064
E: info@kingcampbell.com.au

REV.	DATE	DESCRIPTION
A	24.03.2010	ISSUED FOR INFORMATION
B	28.06.2010	ISSUED FOR E.A.
C	07.07.2010	ISSUED FOR E.A.

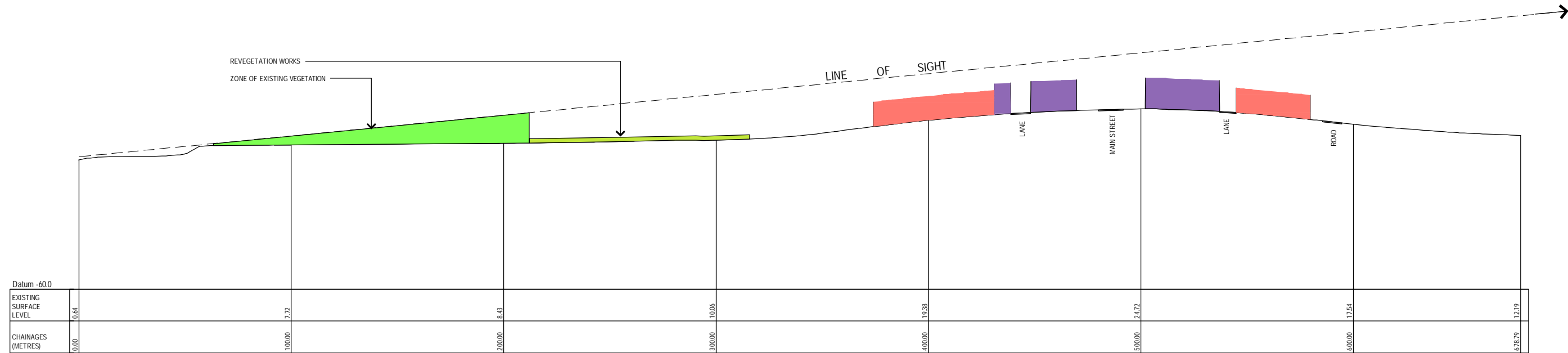
DATUM: AHD SCALE: -
0 25mm
NOTE: DO NOT SCALE OFF DRAWINGS. USE FIGURED DIMENSIONS ONLY. REPORT ANY DISCREPANCIES TO THE AUTHOR. THIS DRAWING, BEING THE PROPERTY OF KING & CAMPBELL PTY LTD, IS PROTECTED BY COPYRIGHT AND MUST NOT BE USED, REPRODUCED OR COPIED WHOLLY OR IN PART WITHOUT THE WRITTEN PERMISSION OF KING & CAMPBELL PTY LTD.
© King & Campbell Pty Ltd

PROJECT NO:	14898	DRAWING TITLE:	EXHIBIT 09 B: VIEW ANALYSIS (SHEET 3)				
DA NO.:							
DESIGNED BY:	DAT	PROJECT:	LOT 1 DP 374315 & LOT 4 DP 615261 OCEAN DRIVE, PORT MACQUARIE				
DRAWN BY:	PH						
CHECKED BY:	DAT	CLIENT:	MILLAND PTY LTD SEAWIDE PTY LTD		DRAWING NO.	SHEET:	REVISION:
DATE CREATED:	JULY 2009				14898_Exhibit_9B_View_Analysis_Sheet_3.psd	1	C



VIEW E

SECTION LOCATION 1:10000@A3



SECTION E

KING + CAMPBELL

King & Campbell Pty Ltd
www.kingcampbell.com.au
A: PO Box 243 Port Macquarie NSW 2444
T: 02 6586 2555
F: 02 6583 4064
E: info@kingcampbell.com.au

REV.	DATE	DESCRIPTION
A	24.03.2010	ISSUED FOR INFORMATION
B	28.06.2010	ISSUED FOR EA
C	07.07.2010	ISSUED FOR EA
D	19.07.2010	ISSUED FOR EA
E	15.02.2011	ISSUED FOR EA - SUBMISSIONS REPORT

DATUM: AHD SCALE: 1:10000 @ A3

0

250

NOTE: DO NOT SCALE OFF DRAWINGS. USE FIGURED DIMENSIONS ONLY. REPORT ANY DISCREPANCIES TO THE AUTHOR. THIS DRAWING, BEING THE PROPERTY OF KING & CAMPBELL PTY LTD, IS PROTECTED BY COPYRIGHT AND MUST NOT BE USED, REPRODUCED OR COPIED WHOLLY OR IN PART WITHOUT THE WRITTEN PERMISSION OF KING & CAMPBELL PTY LTD.

© King & Campbell Pty Ltd

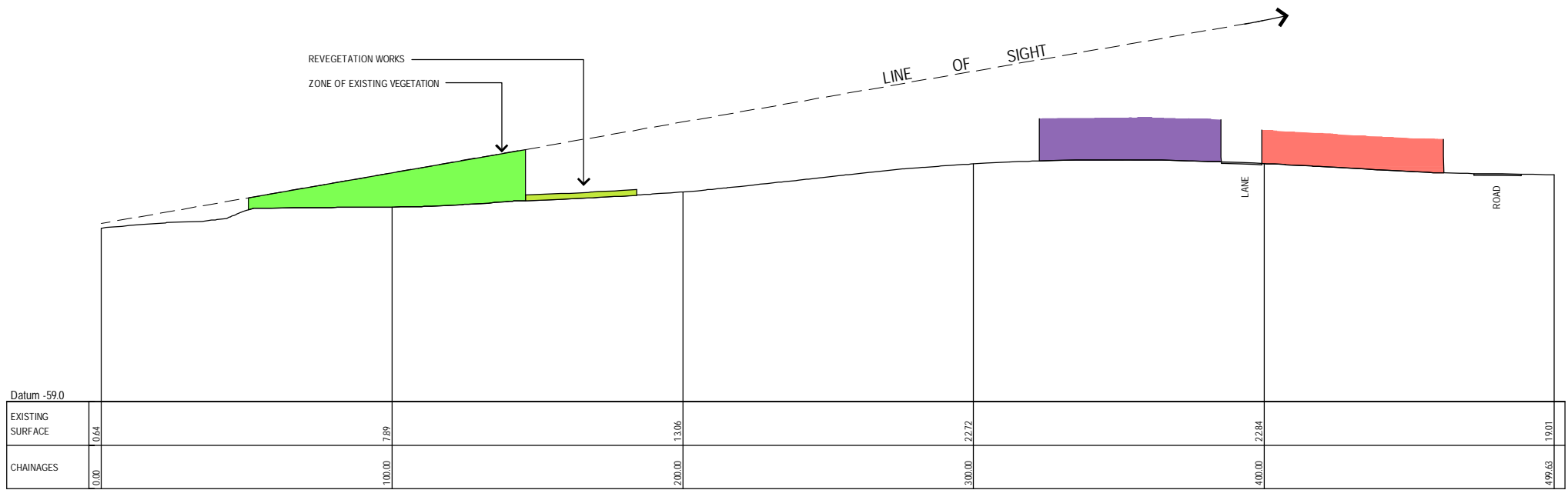
PROJECT NO:	4898	DRAWING TITLE:	EXHIBIT 09C: VIEW ANALYSIS (SHEET 1) BEACH SECTIONS AND PHOTOS				
DA NO.:							
DESIGNED BY:	DAT	PROJECT:	LOT 1 DP 374315 & LOT 4 DP615261 OCEAN DRIVE, PORT MACQUARIE				
DRAWN BY:	MW						
CHECKED BY:	KM	CLIENT:	MILLAND PTY LTD & SEAWIDE PTY LTD		DRAWING NO:	SHEET:	REVISION:
DATE CREATED:	MARCH 2010				4898P_Ex9_BeachSect	1	E



SECTION LOCATION 1:10000@A3



VIEW F



SECTION F

KING + CAMPBELL

King & Campbell Pty Ltd
www.kingcampbell.com.au
A: PO Box 243 Port Macquarie NSW 2444
T: 02 6586 2555
F: 02 6583 4064
E: info@kingcampbell.com.au

REV.	DATE	DESCRIPTION
A	24.03.2010	ISSUED FOR INFORMATION
B	28.06.2010	ISSUED FOR EA
C	07.07.2010	ISSUED FOR EA
D	19.07.2010	ISSUED FOR EA
E	15.02.2011	ISSUED FOR EA - SUBMISSIONS REPORT

DATUM: AHD SCALE: 1:10000 @ A3

0 250

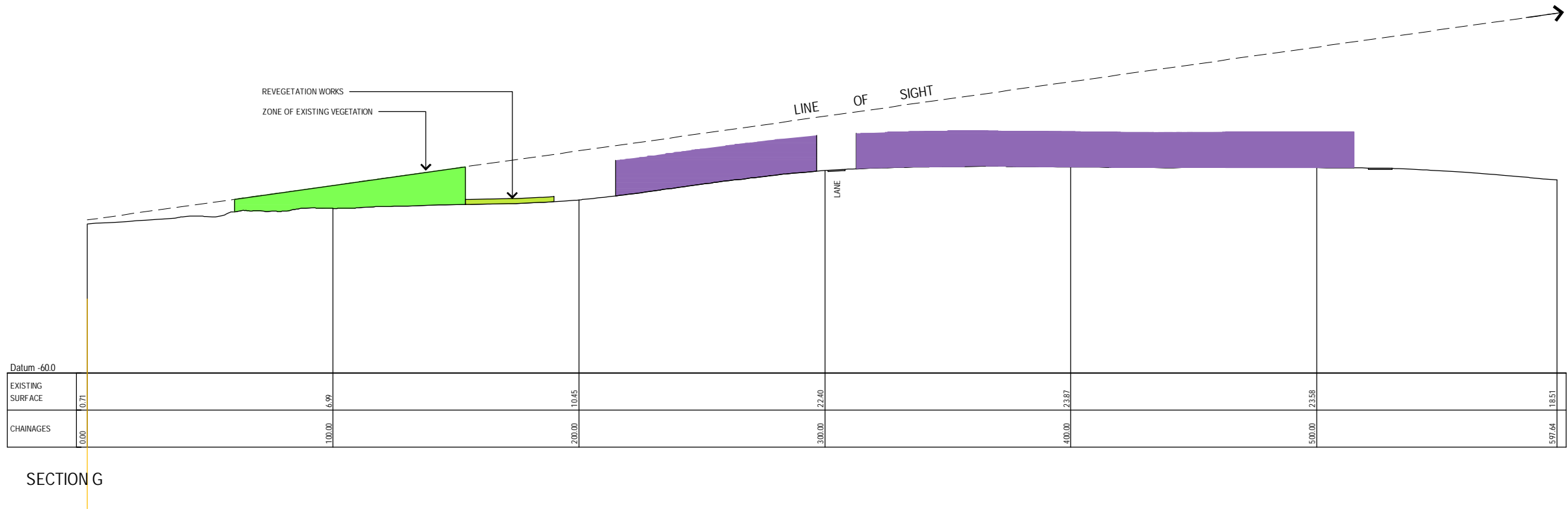
NOTE: DO NOT SCALE OFF DRAWINGS. USE FIGURED DIMENSIONS ONLY. REPORT ANY DISCREPANCIES TO THE AUTHOR. THIS DRAWING, BEING THE PROPERTY OF KING & CAMPBELL PTY LTD IS PROTECTED BY COPYRIGHT AND MUST NOT BE USED, REPRODUCED OR COPIED WHOLLY OR IN PART WITHOUT THE WRITTEN PERMISSION OF KING & CAMPBELL PTY LTD.

© King & Campbell Pty Ltd

PROJECT NO:	4898	DRAWING TITLE:	EXHIBIT 09C: VIEW ANALYSIS (SHEET 2) BEACH SECTIONS AND PHOTOS				
DA NO.:							
DESIGNED BY:	DAT	PROJECT:	LOT 1 DP 374315 & LOT 4 DP615261 OCEAN DRIVE, PORT MACQUARIE				
DRAWN BY:	MW						
CHECKED BY:	KM	CLIENT:	MILLAND PTY LTD & SEAWIDE PTY LTD		DRAWING NO:	SHEET:	REVISION:
DATE CREATED:	MARCH 2010				4898P_Ex9_BeachSect	2	E



SECTION LOCATION 1:10000@A3



KING + CAMPBELL

King & Campbell Pty Ltd
www.kingcampbell.com.au
A: PO Box 243 Port Macquarie NSW 2444
T: 02 6586 2555
F: 02 6583 4064
E: info@kingcampbell.com.au

REV.	DATE	DESCRIPTION
A	24.03.2010	ISSUED FOR INFORMATION
B	28.06.2010	ISSUED FOR EA
C	07.07.2010	ISSUED FOR EA
D	19.07.2010	ISSUED FOR EA
E	15.02.2011	ISSUED FOR EA - SUBMISSIONS REPORT

DATUM: AHD SCALE: 1:10000 @ A3

0 250

NOTE: DO NOT SCALE OFF DRAWINGS. USE FIGURED DIMENSIONS ONLY. REPORT ANY DISCREPANCIES TO THE AUTHOR. THIS DRAWING, BEING THE PROPERTY OF KING & CAMPBELL PTY LTD IS PROTECTED BY COPYRIGHT AND MUST NOT BE USED, REPRODUCED OR COPIED WHOLLY OR IN PART WITHOUT THE WRITTEN PERMISSION OF KING & CAMPBELL PTY LTD.

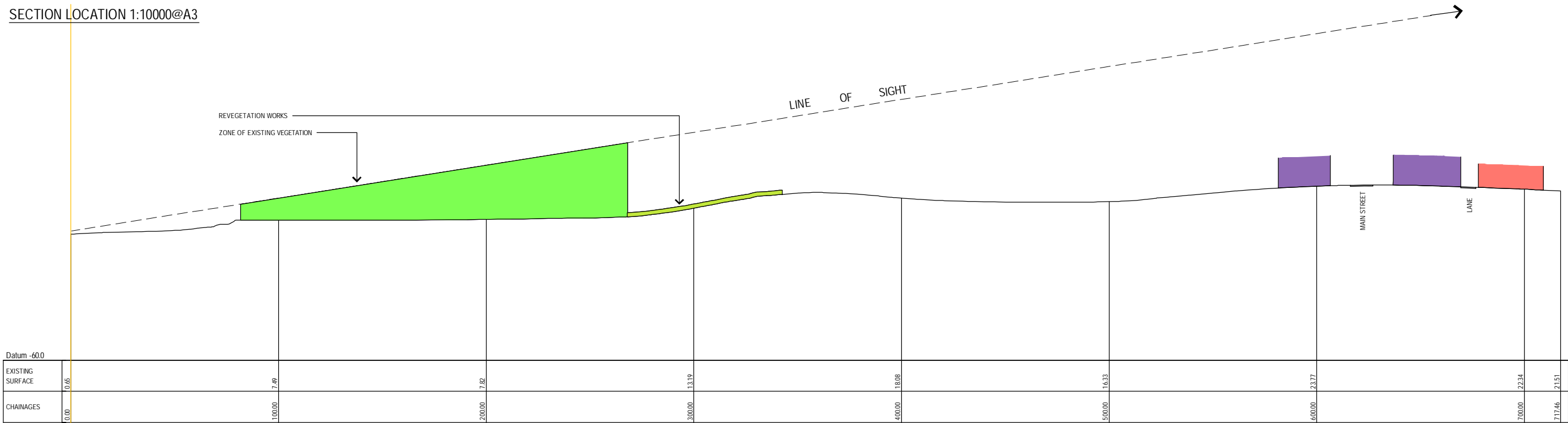
© King & Campbell Pty Ltd

PROJECT NO:	4898	DRAWING TITLE:	EXHIBIT 09C: VIEW ANALYSIS (SHEET 3) BEACH SECTIONS AND PHOTOS		
DA NO:		PROJECT:	LOT 1 DP 374315 & LOT 4 DP615261 OCEAN DRIVE, PORT MACQUARIE		
DESIGNED BY:	DAT	CLIENT:	MILLAND PTY LTD & SEAWIDE PTY LTD		
DRAWN BY:	MW				
CHECKED BY:	KM				
DATE CREATED:	MARCH 2010				
			DRAWING NO:	SHEET:	REVISION:
			4898P_Ex9_BeachSect	3	E



VIEW H

SECTION LOCATION 1:10000@A3



SECTION H

KING + CAMPBELL

King & Campbell Pty Ltd
www.kingcampbell.com.au
A: PO Box 243 Port Macquarie NSW 2444
T: 02 6586 2555
F: 02 6583 4064
E: info@kingcampbell.com.au

REV.	DATE	DESCRIPTION
A	24.03.2010	ISSUED FOR INFORMATION
B	28.06.2010	ISSUED FOR EA
C	07.07.2010	ISSUED FOR EA
D	19.07.2010	ISSUED FOR EA
E	15.02.2011	ISSUED FOR EA - SUBMISSIONS REPORT

DATUM: AHD SCALE: 1:10000 @ A3

0 250

NOTE: DO NOT SCALE OFF DRAWINGS. USE FIGURED DIMENSIONS ONLY. REPORT ANY DISCREPANCIES TO THE AUTHOR. THIS DRAWING, BEING THE PROPERTY OF KING & CAMPBELL PTY LTD, IS PROTECTED BY COPYRIGHT AND MUST NOT BE USED, REPRODUCED OR COPIED WHOLLY OR IN PART WITHOUT THE WRITTEN PERMISSION OF KING & CAMPBELL PTY LTD.

© King & Campbell Pty Ltd

PROJECT NO:	4898	DRAWING TITLE:	EXHIBIT 09C: VIEW ANALYSIS (SHEET 4) BEACH SECTIONS AND PHOTOS		
DA NO:		PROJECT:	LOT 1 DP 374315 & LOT 4 DP615261 OCEAN DRIVE, PORT MACQUARIE		
DESIGNED BY:	DAT	CLIENT:	MILLAND PTY LTD & SEAWIDE PTY LTD		
DRAWN BY:	MW				
CHECKED BY:	KM				
DATE CREATED:	MARCH 2010				
			DRAWING NO:	SHEET:	REVISION:
			4898P_Ex9_BeachSect	4	E

L:\14898_MILLAND_SEAWIDE\Planning\Photoshop\Exhibits 2010.03.15\14898_Exhibit_9D_View Analysis.psd



VIEW I: PANORAMIC VIEW FROM SITE

KING + CAMPBELL

King & Campbell Pty Ltd
www.kingcampbell.com.au
A: PO Box 243 Port Macquarie NSW 2444
T: 02 6586 2555
F: 02 6583 4064
E: info@kingcampbell.com.au

REV.	DATE	DESCRIPTION
A	24.03.2010	ISSUED FOR INFORMATION
B	28.06.2010	ISSUED FOR E.A.
C	07.07.2010	ISSUED FOR E.A.

DATUM: AHD SCALE: -

0

NOTE: DO NOT SCALE OFF DRAWINGS. USE FIGURED DIMENSIONS ONLY. REPORT ANY DISCREPANCIES TO THE AUTHOR. THIS DRAWING, BEING THE PROPERTY OF KING & CAMPBELL PTY LTD, IS PROTECTED BY COPYRIGHT AND MUST NOT BE USED, REPRODUCED OR COPIED WHOLLY OR IN PART WITHOUT THE WRITTEN PERMISSION OF KING & CAMPBELL PTY LTD.

© King & Campbell Pty Ltd

PROJECT NO:	14898	DRAWING TITLE:	EXHIBIT 09 D: VIEW ANALYSIS - PANORAMIC VIEW FROM SITE			
DA NO:	-					
DESIGNED BY:	DAT	PROJECT:	LOT 1 DP 374315 & LOT 4 DP 615261 OCEAN DRIVE, PORT MACQUARIE			
DRAWN BY:	PH					
CHECKED BY:	DAT	CLIENT:				
DATE CREATED:	JULY 2009		MILLAND PTY LTD & SEAWIDE PTY LTD	DRAWING NO: 14898_Exhibit_9D_View Analysis.psd	SHEET: 1	REVISION: C