

NORTH PENRITH STAGE 1

PREFERRED PROJECT REPORT DRAWING SET



AERIAL IMAGE COURTESY OF NearMaps

LOCALITY PLAN

NTS

DRAWING LIST

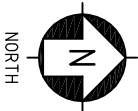
301015-00NP-ST1-F01	TITLE SHEET
301015-00NP-ST1-F02	CONCEPT ROAD PLAN
301015-00NP-ST1-F03	CONCEPT GRADING PLAN
301015-00NP-ST1-F04	CONCEPT BULK EARTHWORKS PLAN
301015-00NP-ST1-F04a	DEMOLITION PLAN
301015-00NP-ST1-F05	CONCEPT ROAD LONG SECTIONS SHEET 1 OF 4
301015-00NP-ST1-F06	CONCEPT ROAD LONG SECTIONS SHEET 2 OF 4
301015-00NP-ST1-F07	CONCEPT ROAD LONG SECTIONS SHEET 3 OF 4
301015-00NP-ST1-F08	CONCEPT ROAD LONG SECTIONS SHEET 4 OF 4
301015-00NP-ST1-F09	CONCEPT ROAD TYPICAL CROSS SECTIONS
301015-00NP-ST1-F10	COREEN AVENUE CONCEPT ROUNDABOUT INTERSECTION
301015-00NP-ST1-F11	CONCEPT STORMWATER DRAINAGE PLAN
301015-00NP-ST1-F12	CONCEPT SERVICING NETWORK
301015-00NP-ST1-F13	SEDIMENT AND EROSION CONTROL PLAN
301015-00NP-ST1-F14	SEDIMENT AND EROSION CONTROL DETAILS



WorleyParsons
resources & energy

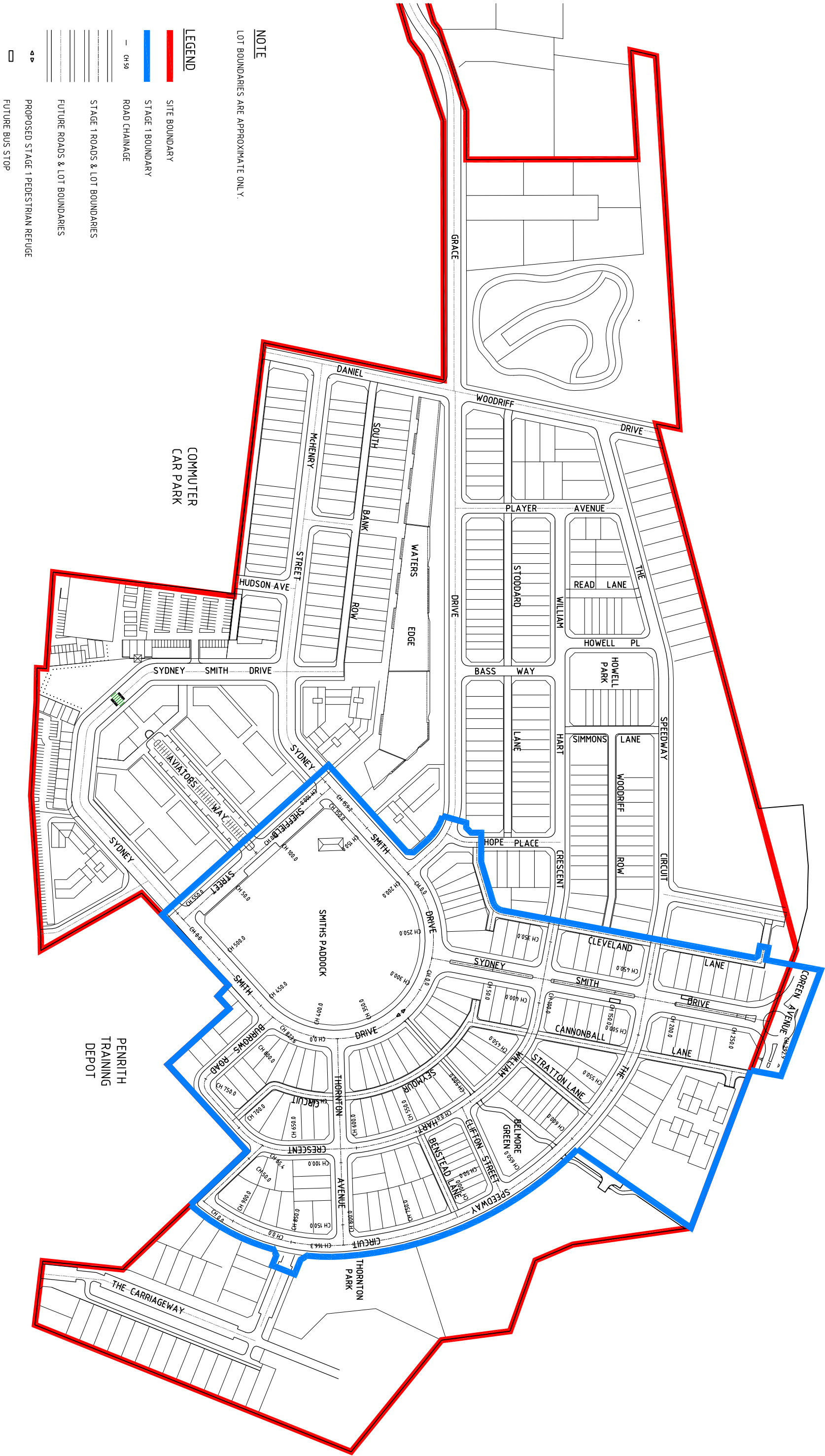


C	31/3/11	ISSUED FOR STAGE 1 PREFERRED PROJECT REPORT
B	27/3/10	FINAL
A	10/9/09	ISSUED FOR STAGE 1 PROJECT APPLICATION
ISSUE	DATE	ISSUE DESCRIPTION



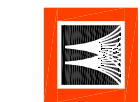
NORTH PENRITH
STAGE 1 PREFERRED PROJECT REPORT
TITLE SHEET

301015-00NP-ST1-F01



NOTE
LOT BOUNDARIES ARE APPROXIMATE ONLY.

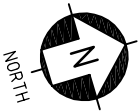
- LEGEND**
- SITE BOUNDARY
 - STAGE 1 BOUNDARY
 - ROAD CHAINAGE
 - STAGE 1 ROADS & LOT BOUNDARIES
 - FUTURE ROADS & LOT BOUNDARIES
 - PROPOSED STAGE 1 PEDESTRIAN REFUGE
 - FUTURE BUS STOP



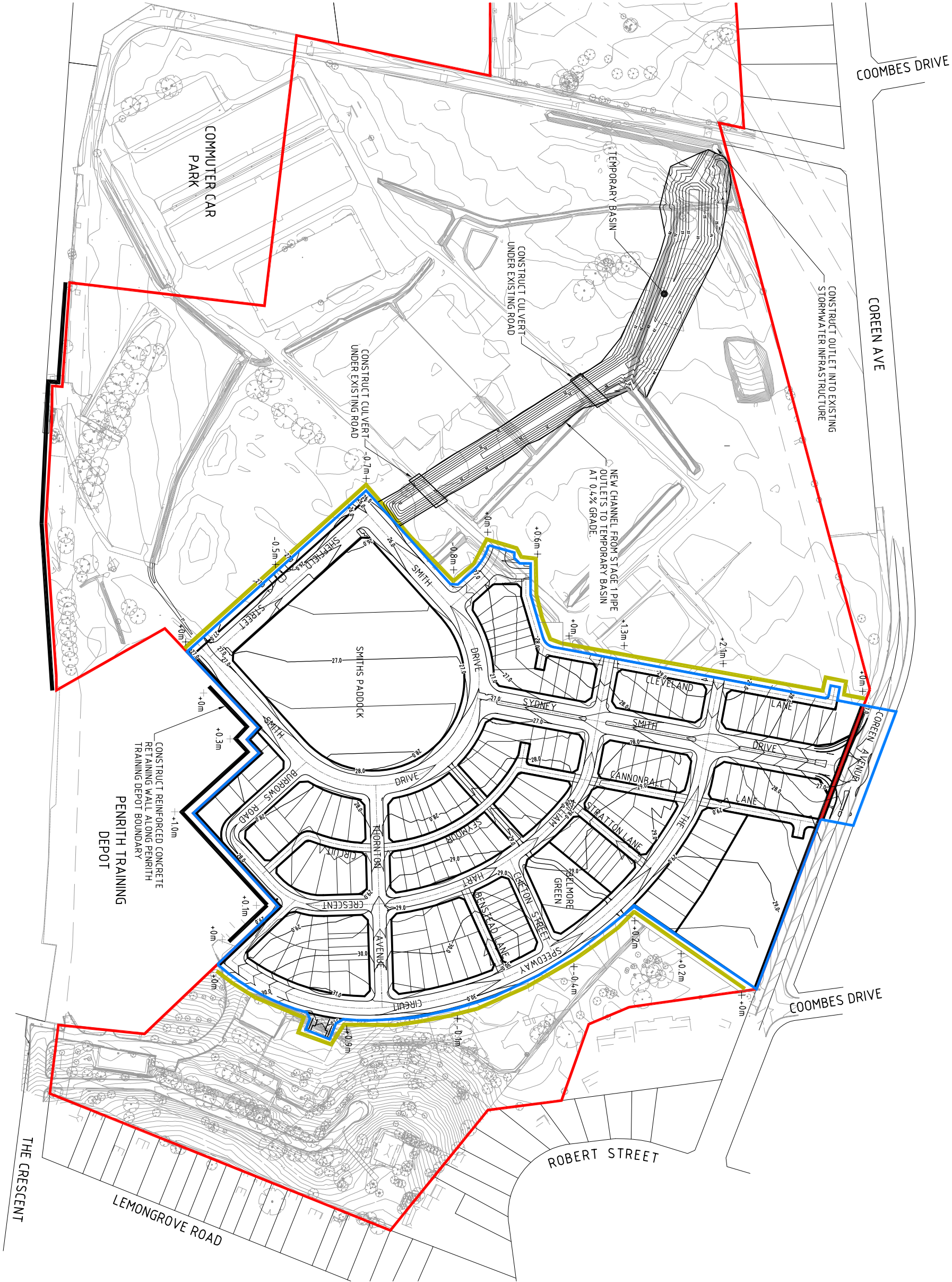
WorleyParsons
resources & energy

OneWay
to zero harm

C	31/03/11	ISSUED FOR STAGE 1 PREFERRED PROJECT REPORT
B	27/10/10	FINAL
A	10/09/10	ISSUED FOR STAGE 1 PROJECT APPLICATION
ISSUE	DATE	ISSUE DESCRIPTION



NORTH PENRITH
STAGE 1 PREFERRED PROJECT REPORT
CONCEPT ROAD PLAN
301015-00NP-ST1-F02

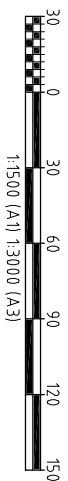


LEGEND

- EXISTING SURFACE CONTOUR (0.25m INTERVAL)
- PROPOSED SURFACE CONTOUR (0.5m INTERVAL)
- EXISTING TREES
- SITE BOUNDARY
- STAGE 1 BOUNDARY
- STAGE 1 ROADS & LOT BOUNDARIES
- LOCATION OF RETAINING WALL AT BOUNDARY AND APPROXIMATE HEIGHT.
- TEMPORARY BATTER (IV:5H) REQUIRED AT BOUNDARY OF STAGE 1 AND APPROXIMATE BATTER HEIGHT.

NOTES

- LEVELS AND GRADING ARE CONCEPTUAL ONLY AND ARE BASED ON A MINIMUM ROAD GRADE OF 0.5%. NO LOT GRADING DESIGN HAS BEEN UNDERTAKEN AT THIS STAGE.
- GRADING DESIGN SURFACE IS 'fin Roads' IN PROJECT W:_Infrastructure\Projects\301015\02381 - Landcom - North Penrith\110 Drawings Models -3d\12d\Stage_1_Grading_Design.project.
- EXISTING SURVEY PROVIDED BY CRAIG & RHODES PTY LTD (23.07.10)



WorleyParsons
resources & energy

OneWay
to zero harm

C	31/03/11	ISSUED FOR STAGE 1 PREFERRED PROJECT REPORT
B	27/10/10	FINAL
A	10/09/10	ISSUED FOR STAGE 1 PROJECT APPLICATION
ISSUE	DATE	ISSUE DESCRIPTION



NORTH PENRITH
STAGE 1 PREFERRED PROJECT REPORT
CONCEPT GRADING PLAN

301015-00NP-ST1-F03



C	31/3/11	ISSUED FOR STAGE 1 PROJECT REPORT
B	27/11/10	FINAL
A	10/09/10	ISSUED FOR STAGE 1 PROJECT APPLICATION
ISSUE	DATE	ISSUE DESCRIPTION



**NORTH PENRITH
STAGE 1 PREFERRED PROJECT REPORT
CONCEPT BULK EARTHWORKS PLAN**

COMPUTER CAR
PARK

PENRITH TRAINING
DEPOT

CUT	DEPTH	VOL. (m ³)
-7.0	to -3.5	-75
-3.5	to -3.0	-800
-3.0	to -2.5	-1542
-2.5	to -2.0	-2225
-2.0	to -1.5	-2967
-1.5	to -1.0	-3780
-1.0	to -0.5	-8023
-0.5	to 0	-23637
TOTAL CUT		-43050

FILL		
DEPTH		VOL. (m ³)
0	to	0.5
0.5	to	1.0
1.0	to	1.5
1.5	to	2.0
2.0	to	2.5
2.5	to	3.0
3.0	to	3.5
TOTAL FILL		

LEGEND

30.0

PROPOSED SURFACE CONTOUR
(0.25m INTERVAL)

 SITE BOUNDARY

STAGE 1 BOUNDARY

NOTES

1. BULK EARTHWORKS VOLUMES HAVE BEEN CALCULATED BETWEEN EXISTING SURFACE AND CONCEPT DESIGN FINISHED SURFACE. NO ALLOWANCE HAS BEEN MADE FOR STRIPPING OF TOPSOIL, REMOVAL OF UNSUITABLE MATERIAL, BOXING OUT OF PAVEMENTS OR FOUNDATIONS AND DEEP EXCAVATIONS (EG BASEMENTS) ETC.
2. BULK EARTHWORKS VOLUMES CALCULATED USING '4m ROADS' IN PROJECT
'W:\Infrastructure\Projects\301015\02381 - Landcom - North Perth\1110 Drawings\Models - 3d\12d\Stage_1_Grading_Design project'

