

A1.3 Indicative lot layout

The Nords Wharf community has expressed a desire for a range of lot sizes. The Concept Plan provides for a range of lot sizes and housing types to be provided in the estate:

- Typical lots range from 450m² to 930m².
- In addition to the typical lots there will be three superlots of integrated housing. These superlots range from 1600m² to 5000m² and can be subdivided into lots with a minimum site area of 350m². While the smaller lots are less than Lake Macquarie Council's minimum site area requirement of 450m².

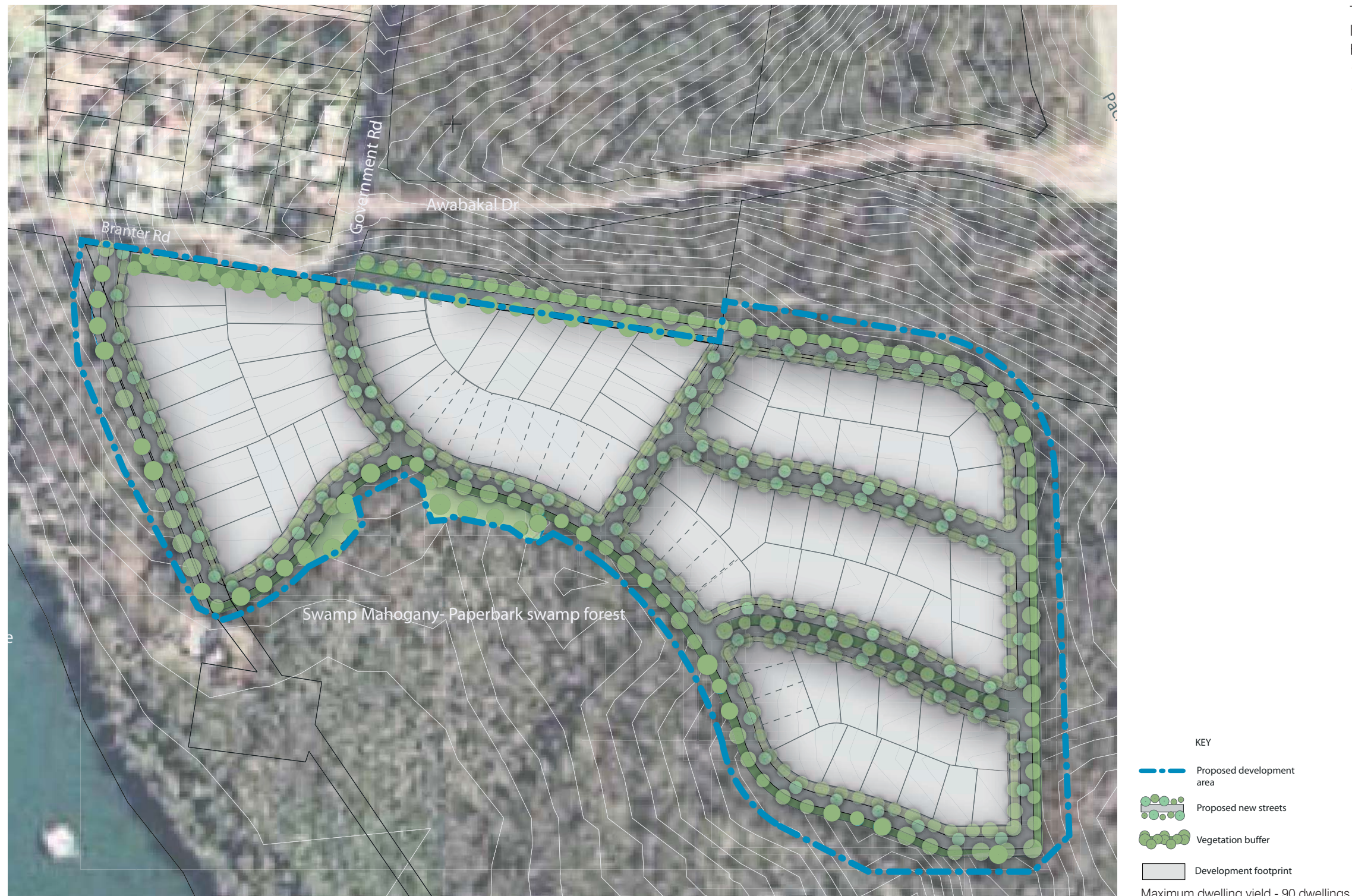


Figure A1.3.1 - Indicative lot layout