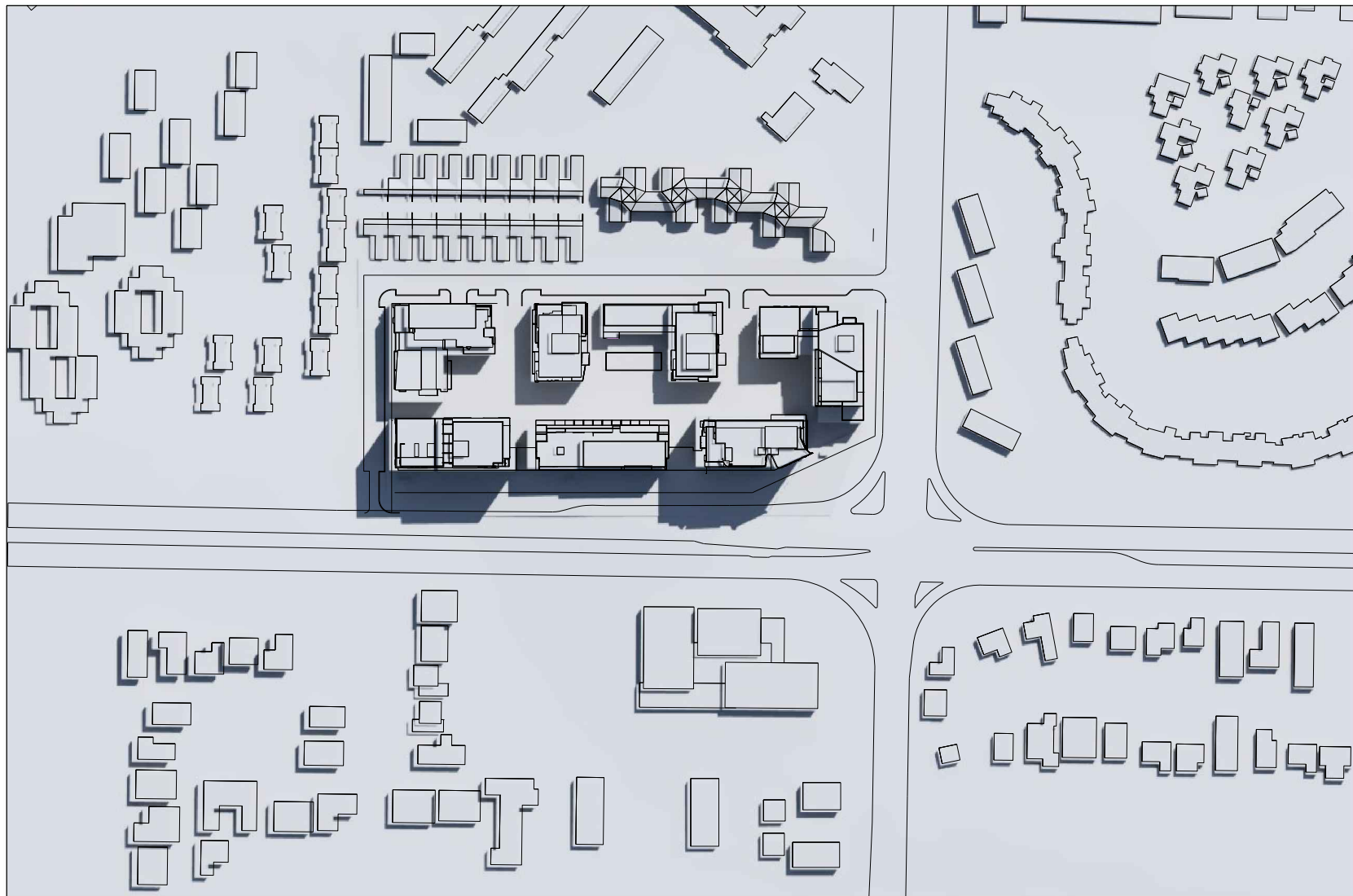
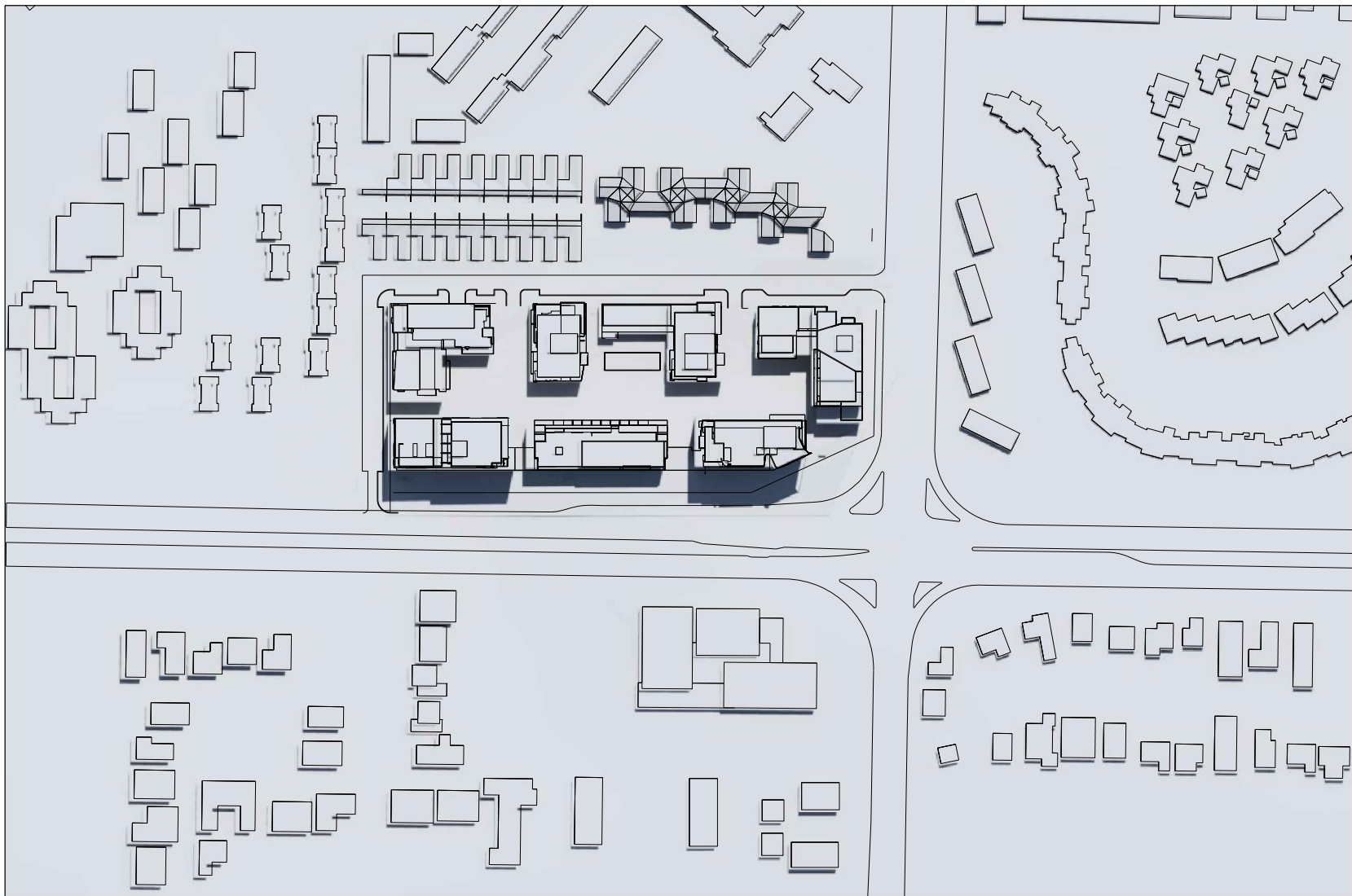


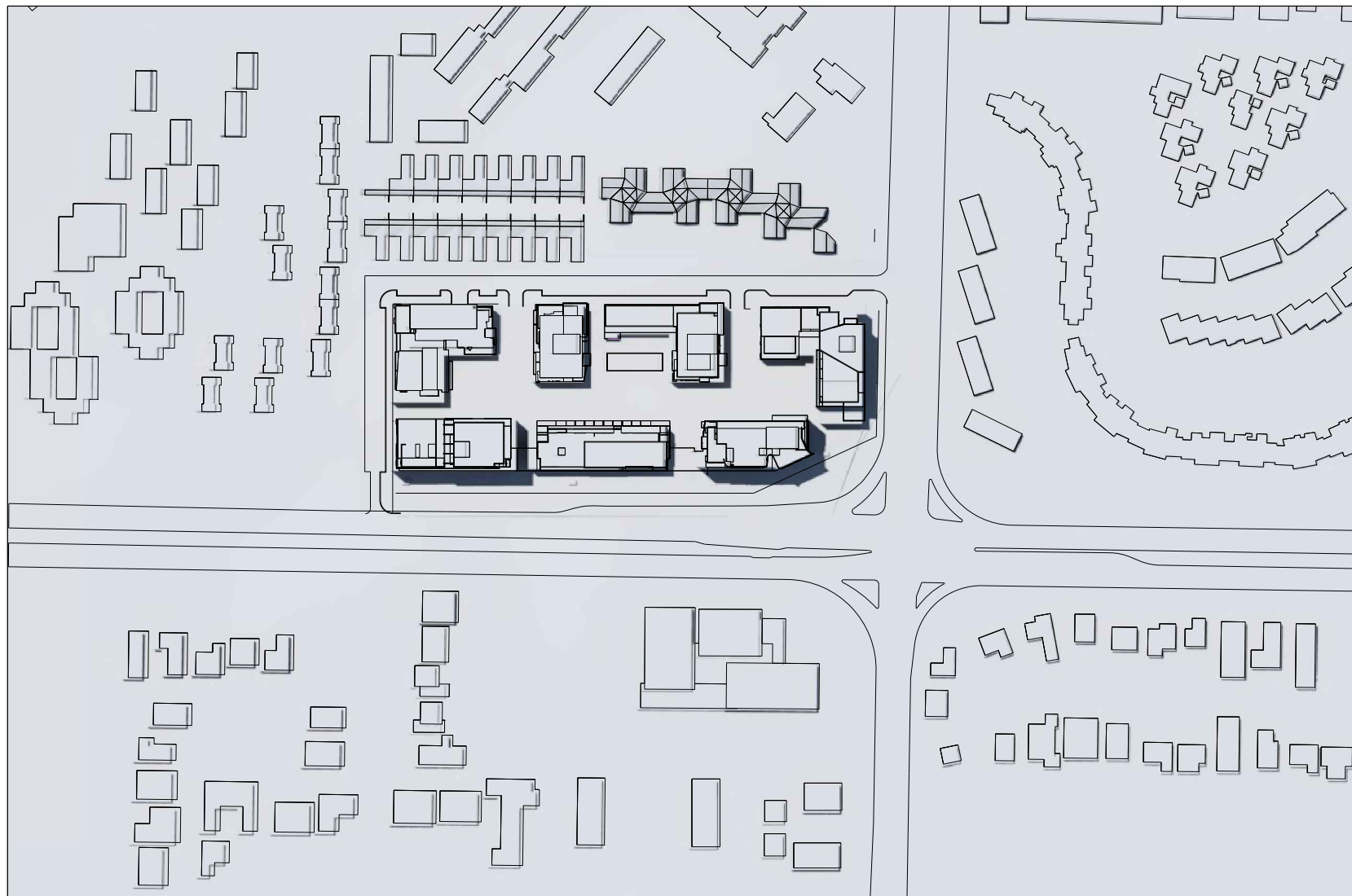
SUMMER SOLSTICE 9AM DECEMBER 21



SUMMER SOLSTICE 10AM DECEMBER 21



SUMMER SOLSTICE 11AM DECEMBER 21



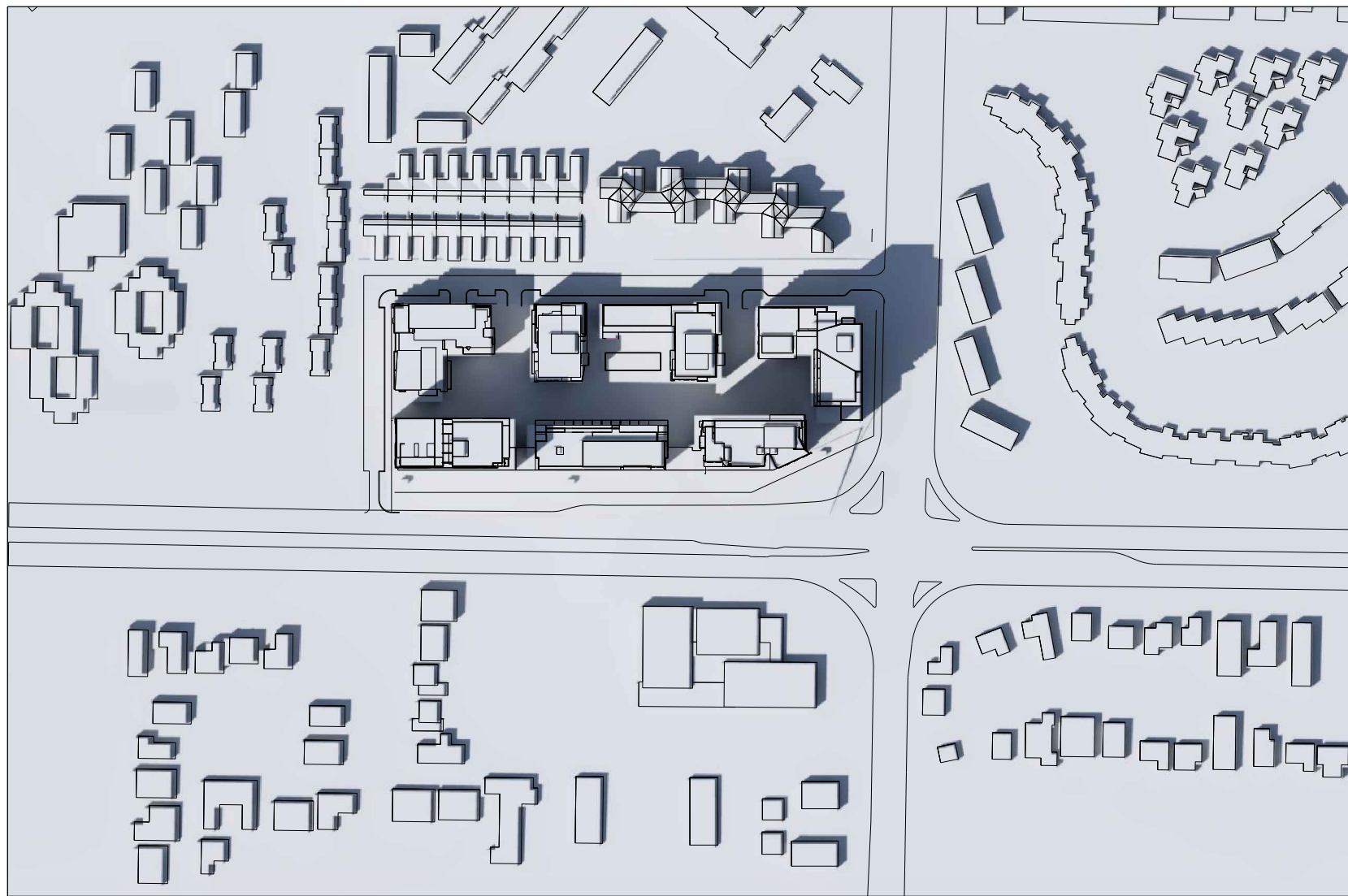
SUMMER SOLSTICE 12 NOON DECEMBER 21



SUMMER SOLSTICE 1PM DECEMBER 21



SUMMER SOLSTICE 2PM DECEMBER 21



SUMMER SOLSTICE 3PM DECEMBER 21

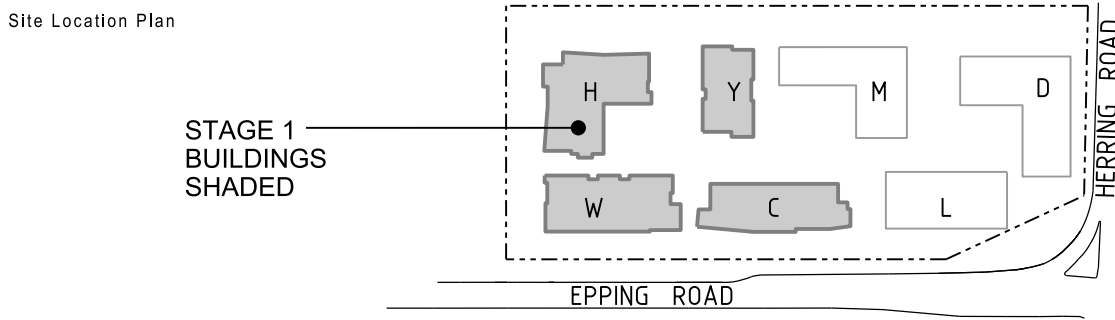
Revisions
No Date Description Ver App'd
A 21.01.11 PART 3A SUBMISSION

THE NUMBER 4 HAS BEEN DELETED FROM THE FLOOR NOMENCLATURE

Do not scale drawings. Use figured dimensions only. Check & verify levels and dimensions on site prior to the commencement of any work, the preparation of shop drawings or the fabrication of components.

This drawing is the copyright of Allen Jack + Cottier Architects and is protected under the Copyright Act 1968. Do not alter, reproduce or transmit in any form, or by any means without the express permission of Allen Jack + Cottier Architects.

Nominated Architects: Michael Heenan 5264, Peter Ireland 6661, Reginald Smith 3312, Peter Stronach 3372



Client

STAMFORD
LAND CORPORATION LTD

Architect

AJ+C
ALLEN JACK+COTTIER
79 Myrtle Street Chippendale NSW 2008 AUSTRALIA
ph +61 2 9311 8222 fx +61 2 9311 8200 ABN 53 003 782 250

Project

MACQUARIE VILLAGE
110-114 HERRING ROAD
MACQUARIE PARK

Proj No. **10_030**

Drawing Title

**SHADOW DIAGRAMS
SUMMER SOLSTICE
DECEMBER 21**

Drawing Status
NOT FOR CONSTRUCTION

Scale

Drawing No
DA3602

Issue
A