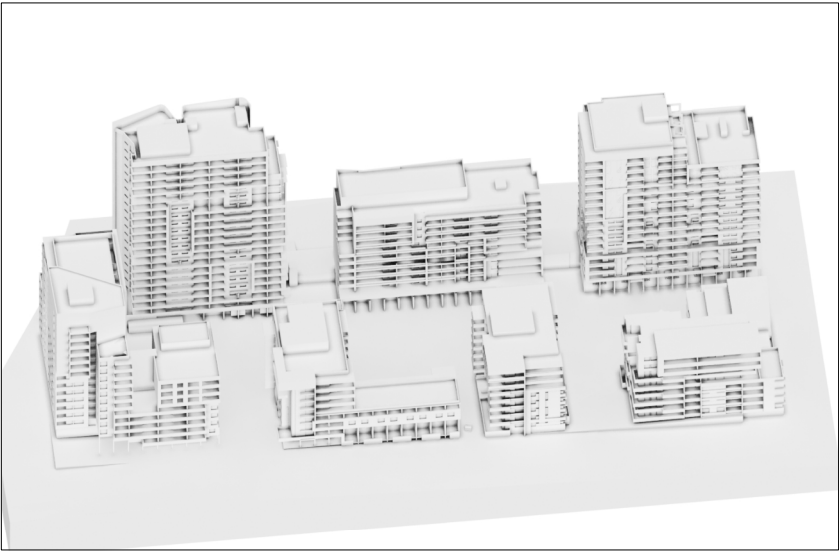




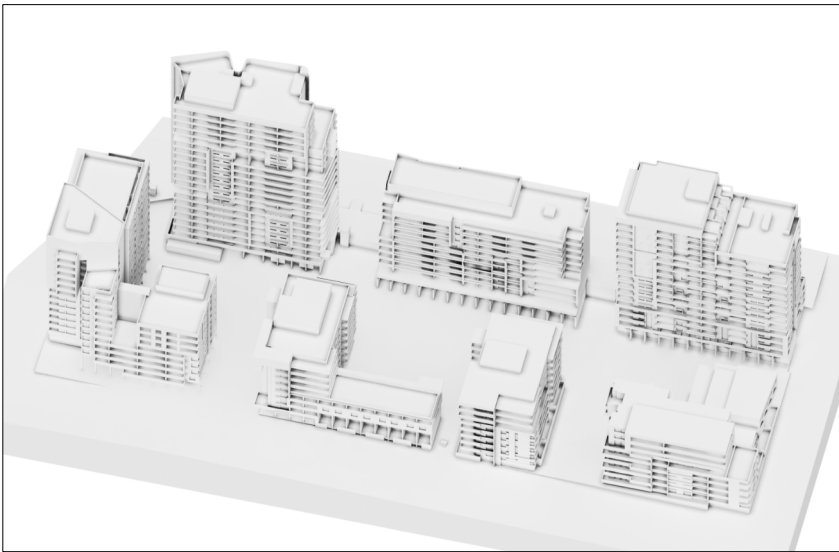
EQUINOX 8AM MARCH/SEPTEMBER 21



EQUINOX 9AM MARCH/SEPTEMBER 21



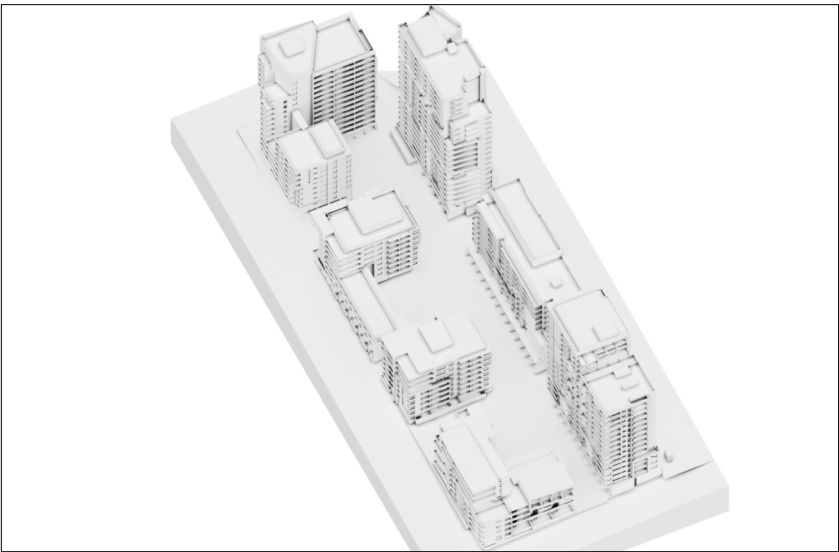
EQUINOX 10AM MARCH/SEPTEMBER 21



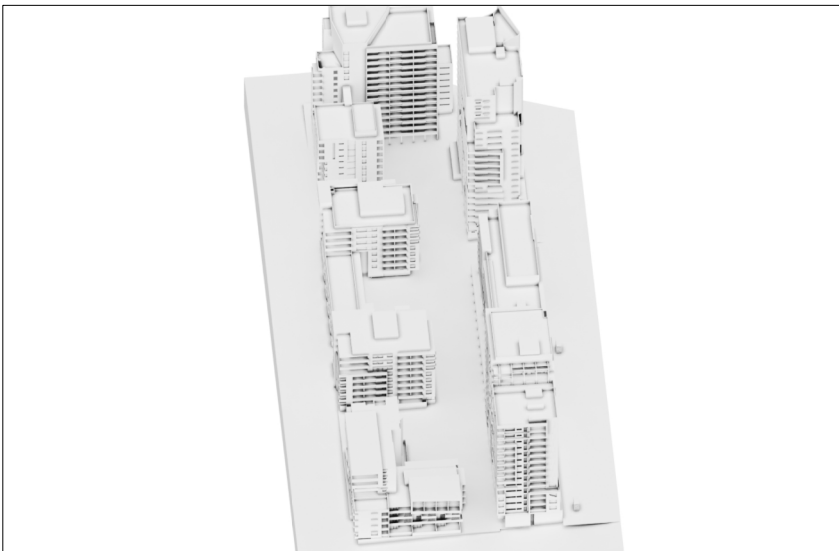
EQUINOX 11AM MARCH/SEPTEMBER 21



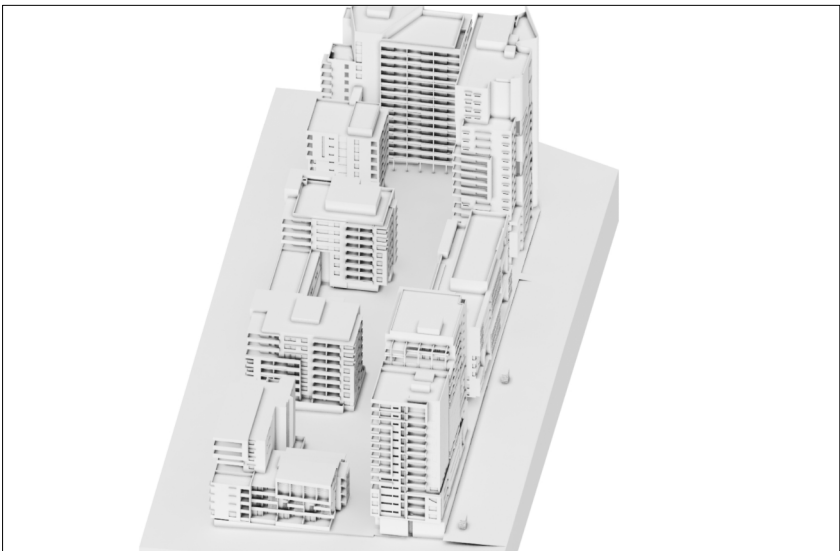
EQUINOX 12PM MARCH/SEPTEMBER 21



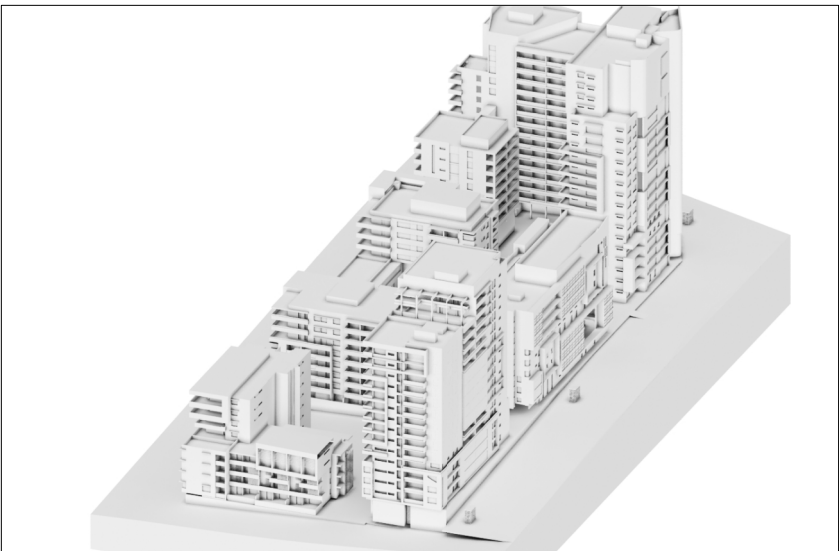
EQUINOX 1PM MARCH/SEPTEMBER 21



EQUINOX 2PM MARCH/SEPTEMBER 21



EQUINOX 3PM MARCH/SEPTEMBER 21



EQUINOX 4PM MARCH/SEPTEMBER 21

Revisions	No.	Date	Description	Ver.	App'd
A	21.01.11	PART 3A SUBMISSION			

THE NUMBER 4 HAS BEEN DELETED FROM THE FLOOR NOMENCLATURE

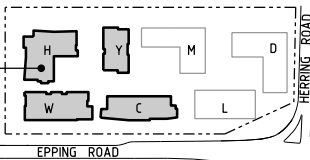
Do not scale drawings. Use figured dimensions only. Check & verify levels and dimensions on site prior to the commencement of any work, the preparation of shop drawings or the fabrication of components.

This drawing is the copyright of Allen Jack + Cotter Architects and is protected under the Copyright Act 1968. Do not alter, reproduce or transmit in any form, or by any means without the express permission of Allen Jack + Cotter Architects.

Nominated Architects: Michael Heenan 5264, Peter Ireland 6661, Reginald Smith 3332, Peter Stronach 3372.

Site Location Plan

STAGE 1
BUILDINGS
SHADED



Client

Architect

AJ+C
ALLEN JACK + COTTER
79 Myrtle Street Chippendale NSW 2008 AUSTRALIA
ph +61 2 9311 8222 fx +61 2 9311 8200 ABN 53 003 782 250

Project

MACQUARIE VILLAGE
110-114 HERRING ROAD
MACQUARIE PARK

Proj No. 10_030



Drawing Title

DAYLIGHT ACCESS DIAGRAMS
EQUINOX
MARCH/SEPTEMBER 21

Drawing Status

NOT FOR CONSTRUCTION

Scale

Drawing No. DA3611

Issue

A