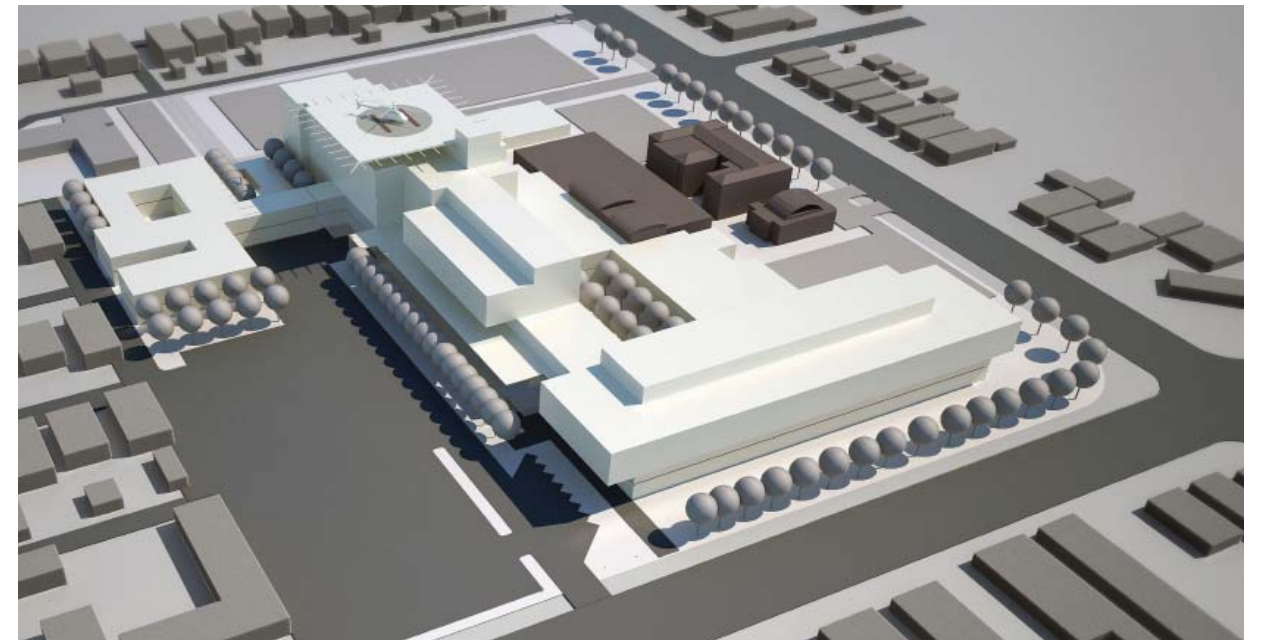


## APPENDIX D

### Landscape Concept Plan





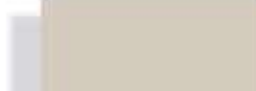





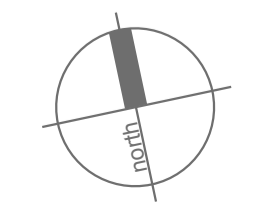
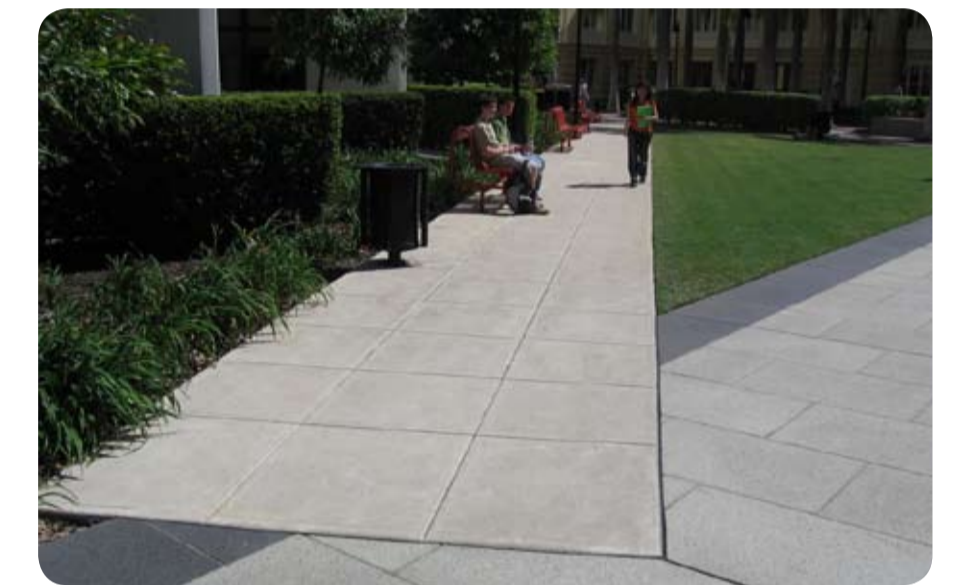
# EDWARD STREET

# Landscape Masterplan

# DOCKER STREET



-  Proposed Building
-  Primary Pedestrian Access
-  Existing Building
-  Landscape/Circulation Zones
-  Primary Landscape Zones
-  Primary Hospital Entries







SS09-1864 Wagga Wagga Hospital Preliminary Plant Schedule				
Symbol	Botanic Name	Common Name	Mature Size (h x w) (m)	Pot Size
<b>TREES</b>				
Aj	<i>Albizia julibrissin</i>	Silk Tree	5-12 x 3-5	200L
EI	<i>Eucalyptus leucoxylon 'Megalocarpa'</i>	Large-fruited Yellow Gum	5 x 10	45L
Es	<i>Eucalyptus sideroxylon 'Rosea'</i>	Red Ironbark	7 x 15-20	45L
Mq	<i>Melaleuca quinquenervia</i>	Brad-leaved Paperbark	12 x 6	45L
Ph	<i>Platanus hybrida</i>	London Plane	15 x 7	200L
Pc	<i>Pyrus calleryana 'Chanicleer'</i>	Callery Pear	12 x 4	200L
Up	<i>Ulmus parvifolia</i>	Chinese Elm	13 x 4	200L
<b>LOW SHRUBS AND ACCENTS</b>				
Ac	<i>Acacia cognata 'Limelight'</i>	Narrow-leaf Bower Wattle	1 x 1	300mm
BLE	<i>Banksia 'Little Eric'</i>	Dwarf Banksia	2 x 1.5	300mm
CLJ	<i>Callistemon 'Little John'</i>	Dwarf Bottle Brush	1 x 1	300mm
HI	<i>Hebe 'Inspiration'</i>	Hebe	1 x 1	300mm
PYW	<i>Phormium 'Yellow Wave'</i>	New Zealand Flax	1 x 1	300mm
Sr	<i>Strelitzia reginae</i>	Bird-of-Paradise	1.8 x 1	300mm
WWG	<i>Westringia 'Wynyabbie Gem'</i>	Native Rosemary	1.5 x 1	300mm
<b>GROUNDCOVERS AND GRASSES</b>				
ABG	<i>Anigozanthos 'Bush Gem'</i>	Kangaroo Paw	1 x 0.4	150mm
Bm	<i>Brachycome multifida</i>	Swan River Daisy	0.3 x 0.45	150mm
Cg	<i>Carpobrotus glaucesens</i>	Pigface	0.3 x 0.5	150mm
Dc	<i>Dianella caerulea 'Breeze'</i>	Blue Flax Lily	0.6 x 0.6	150mm
Jh	<i>Juniperus horizontalis 'Douglasii'</i>	Prostrate Juniper	0.2 x 0.5	150mm
Pa	<i>Pennisetum alopecuroides 'Nafray'</i>	Swamp Foxtail	0.7 x 0.7	150mm
Tj	<i>Trachelospermum jasminoides</i>	Star Jasmine	0.3 x 0.3	150mm

