

LEGEND:

- Existing 96L 132kV Structure Locations[^]
- Existing Transmission Lines[^]
- Proposed 330kV Angle Positions (Indicative)[^]
- Proposed 330kV Structure Locations (Indicative)[^]
- Proposed 330kV Centreline[^]
- Proposed 330kV Easement[^]
- Substation/Switching Station
- Roads

Waterways:

- Class 1: Permanent Flow
- Class 2: Permanent / Intermittent Flow
- Class 3: Intermittent Flow

Access Tracks:

- Category 1*
- Category 2**
- Category 3***

- Creek Crossing (New)
- Creek Crossing (Upgrade Required)
- Local Government Area

^{*}Category 1: Minimal work required. This would include removal of surface obstacles and/or minor upgrades to existing tracks (i.e. resurfacing, widening etc). Some imported sand and gravel may be required.

^{**}Category 2: Earth works required. Construction of tracks through flat or undulating timbered/rocky areas where existing tracks do not exist. These can range from tracks required over flat plains country, or involve the formation of tracks after cut and fill, rock removal and/or levelling. Newly constructed Category 2 access tracks would typically be topped with approved gravel. Access tracks would be appropriately compacted and graded and included drainage in the direction of the cross fall to ensure tracks could be maintained and erosion impacts from run off minimised.

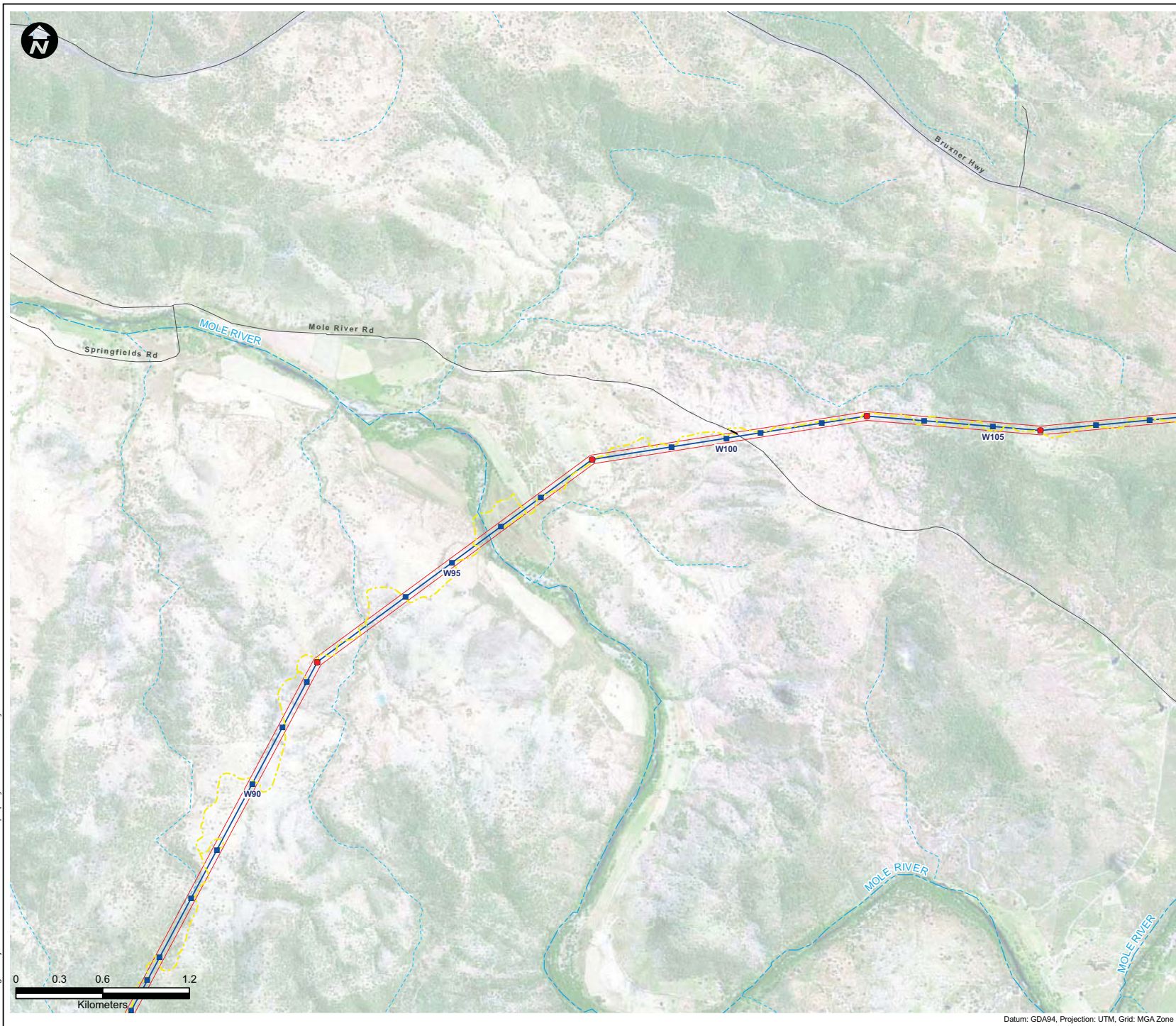
^{***}Category 3: Earth works required in wet or swampy areas. Typically construction would require excavation of unstable material, drainage works and the import of rock material. This rock would be placed upon a geotextile material to provide a stable surface to facilitate the movement of required construction plant and equipment.

Symbols and lines used in this figure are indicative and are not intended to reflect actual size of represented features.
Symbols and lines have been enhanced to aid visibility.

Source: Aerial Imagery from TransGrid 2009. [^] TransGrid 2010
^{*} Fairfull and Witheridge, 2003
Commonwealth of Australia (Geoscience Australia) 2010

Drawn: AO/SB	Approved: WM/TH	Date: 21/02/2011
Job No.: 43177662	File No.: 43177662.140.mxd	
Client TransGrid		
Project FAR NORTH NSW (DUMARESQ - LISMORE 330kV TRANSMISSION LINE) PROJECT		
Title 330kV TRANSMISSION LINE ALIGNMENT AND ACCESS TRACKS AERIAL		
Figure: 2-1e		

Datum: GDA94, Projection: UTM, Grid: MGA Zone 56



LEGEND:

- Existing 96L 132kV Structure Locations[^]
- Existing Transmission Lines[^]
- Proposed 330kV Angle Positions (Indicative)[^]
- Proposed 330kV Structure Locations (Indicative)[^]
- Proposed 330kV Centreline[^]
- Proposed 330kV Easement[^]
- Substation/Switching Station
- Roads

Waterways¹:

- Class 1: Permanent Flow
- Class 2: Permanent / Intermittent Flow
- Class 3: Intermittent Flow

Access Tracks:

- Category 1*
- Category 2**
- Category 3***

Creek Crossing (New)

Creek Crossing (Upgrade Required)

Local Government Area

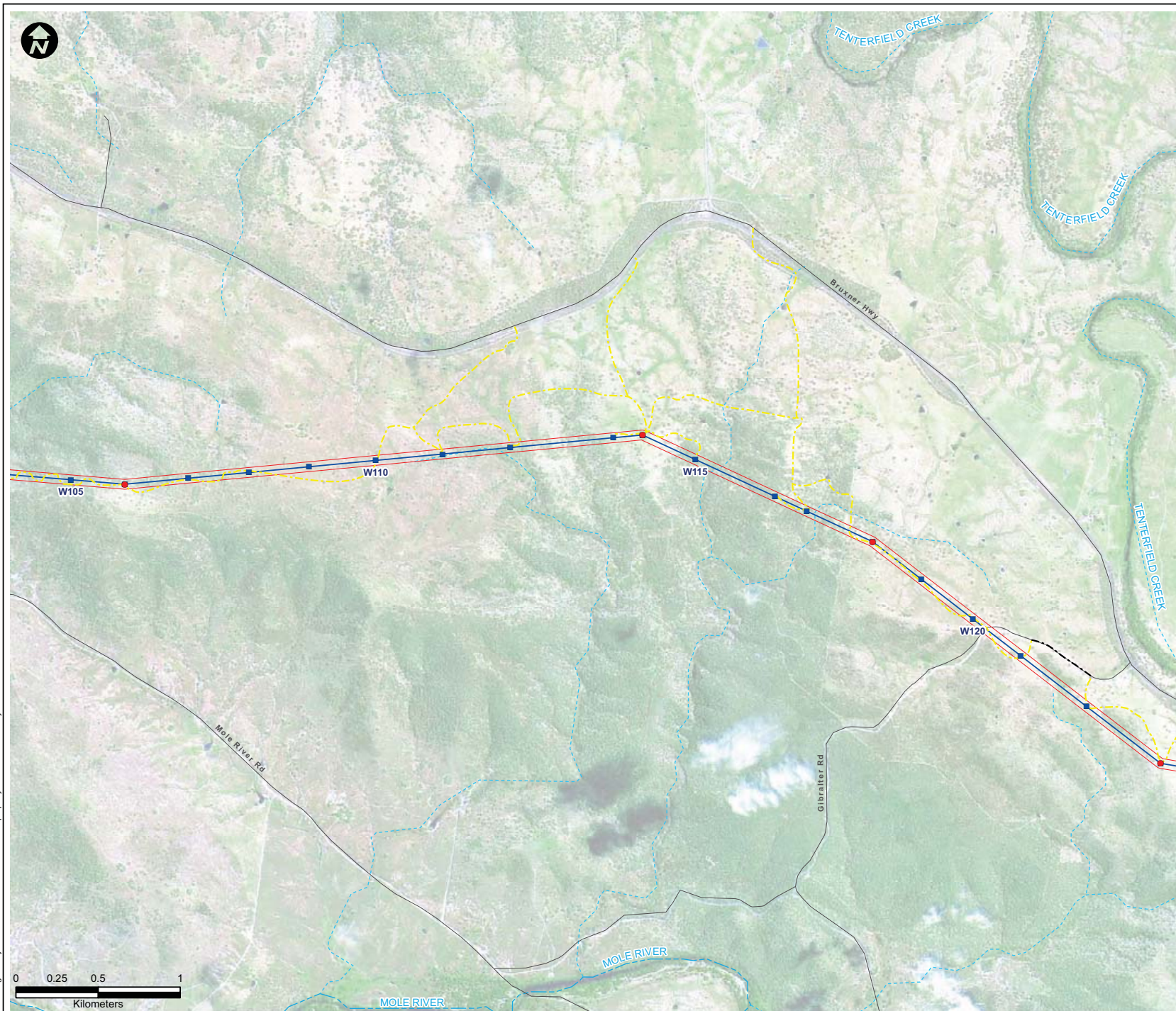
¹Category 1: Minimal work required. This would include removal of surface obstacles and/or minor upgrades to existing tracks (i.e. resurfacing, widening etc). Some imported sand and gravel may be required.
²Category 2: Earth works required. Construction of tracks through flat or undulating timbered/rocky areas where existing tracks do not exist. These can range from tracks required over flat plains country, or involve the formation of tracks after cut and fill, rock removal and/or levelling. Newly constructed Category 2 access tracks would typically be topped with approved gravel. Access tracks would be appropriately compacted and graded and included drainage in the direction of the cross fall to ensure tracks could be maintained and erosion impacts from run off minimised.
³Category 3: Earth works required in wet or swampy areas. Typically construction would require excavation of unstable material, drainage works and the import of rock material. This rock would be placed upon a geotextile material to provide a stable surface to facilitate the movement of required construction plant and equipment.

QLD
NSW
KYOGIE
LISMORE
RICHMOND VALLEY
TENTERFIELD
IVERRELL

Symbols and lines used in this figure are indicative and are not intended to reflect actual size of represented features.
Symbols and lines have been enhanced to aid visibility.
Source: Aerial Imagery from TransGrid 2009. [^] TransGrid 2010
¹ Fairfull and Witheridge, 2003
Commonwealth of Australia (Geoscience Australia) 2010

Drawn: AO/SB	Approved: WM/TH	Date: 21/02/2011
Job No.: 43177662	File No.: 43177662.140.mxd	
Client TransGrid		
Project FAR NORTH NSW (DUMARESQ - LISMORE 330kV TRANSMISSION LINE) PROJECT		
Title 330kV TRANSMISSION LINE ALIGNMENT AND ACCESS TRACKS AERIAL		
Figure: 2-1f		

Datum: GDA94, Projection: UTM, Grid: MGA Zone 56



LEGEND:

- Existing 96L 132kV Structure Locations[^]
- Existing Transmission Lines[^]
- Proposed 330kV Angle Positions (Indicative)[^]
- Proposed 330kV Structure Locations (Indicative)[^]
- Proposed 330kV Centreline[^]
- Proposed 330kV Easement[^]
- Substation/Switching Station
- Roads

Waterways¹:

- Class 1: Permanent Flow
- Class 2: Permanent / Intermittent Flow
- Class 3: Intermittent Flow

Access Tracks:

- Category 1*
- Category 2**
- Category 3***

- Creek Crossing (New)
- Creek Crossing (Upgrade Required)
- Local Government Area

¹Category 1: Minimal work required. This would include removal of surface obstacles and/or minor upgrades to existing tracks (i.e. resurfacing, widening etc). Some imported sand and gravel may be required.

²Category 2: Earth works required. Construction of tracks through flat or undulating timbered/rocky areas where existing tracks do not exist. These can range from tracks required over flat plains country, or involve the formation of tracks after cut and fill, rock removal and/or levelling. Newly constructed Category 2 access tracks would typically be topped with approved gravel. Access tracks would be appropriately compacted and graded and included drainage in the direction of the cross fall to ensure tracks could be maintained and erosion impacts from run off minimised.

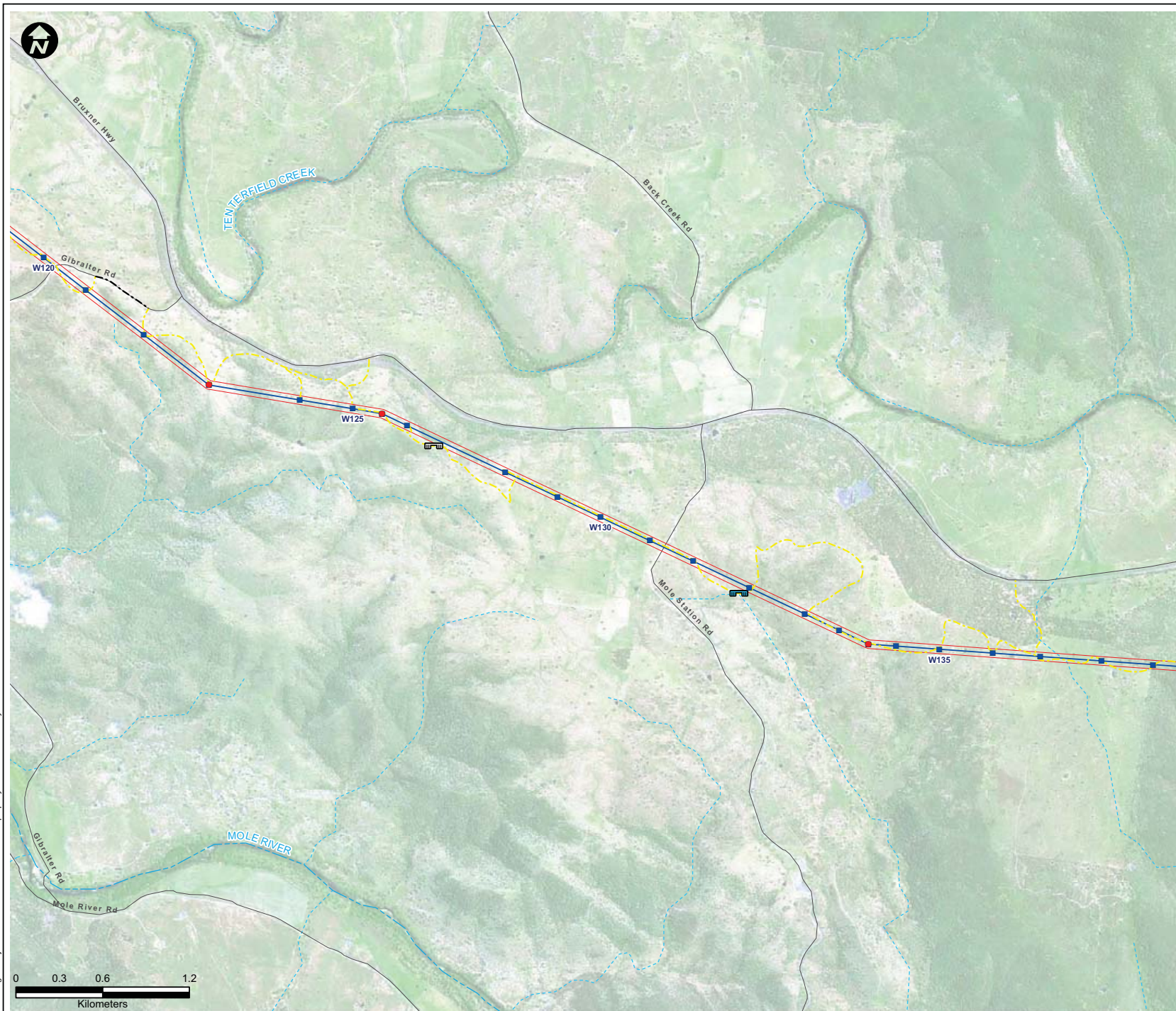
³Category 3: Earth works required in wet or swampy areas. Typically construction would require excavation of unstable material, drainage works and the import of rock material. This rock would be placed upon a geotextile material to provide a stable surface to facilitate the movement of required construction plant and equipment.

Symbols and lines used in this figure are indicative and are not intended to reflect actual size of represented features.
Symbols and lines have been enhanced to aid visibility.

Source: Aerial Imagery from TransGrid 2009. [^] TransGrid 2010
¹ Fairfull and Witheridge, 2003
Commonwealth of Australia (Geoscience Australia) 2010

Drawn: AO/SB	Approved: WM/TH	Date: 21/02/2011
Job No.: 43177662	File No.: 43177662.140.mxd	
Client TransGrid		
Project FAR NORTH NSW (DUMARESQ - LISMORE 330kV TRANSMISSION LINE) PROJECT		
Title 330kV TRANSMISSION LINE ALIGNMENT AND ACCESS TRACKS AERIAL		
Figure: 2-1g		

Datum: GDA94, Projection: UTM, Grid: MGA Zone 56



LEGEND:

- Existing 96L 132kV Structure Locations[^]
- Existing Transmission Lines[^]
- Proposed 330kV Angle Positions (Indicative)[^]
- Proposed 330kV Structure Locations (Indicative)[^]
- Proposed 330kV Centreline[^]
- Proposed 330kV Easement[^]
- Substation/Switching Station
- Roads

Waterways¹:

- Class 1: Permanent Flow
- Class 2: Permanent / Intermittent Flow
- Class 3: Intermittent Flow

Access Tracks:

- Category 1*
- Category 2**
- Category 3***
- Creek Crossing (New)
- Creek Crossing (Upgrade Required)
- Local Government Area

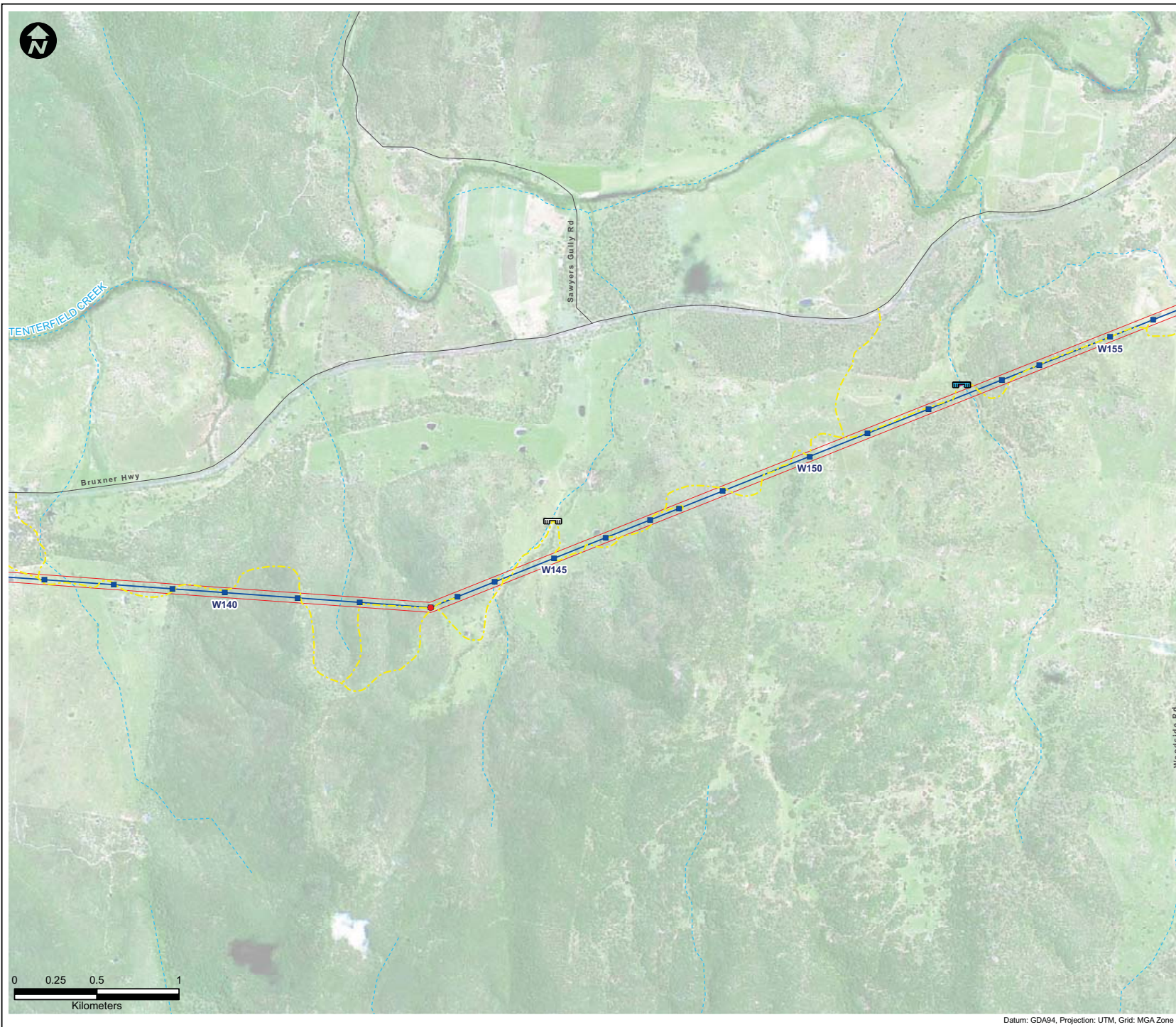
¹Category 1: Minimal work required. This would include removal of surface obstacles and/or minor upgrades to existing tracks (i.e. resurfacing, widening etc). Some imported sand and gravel may be required.
²Category 2: Earth works required. Construction of tracks through flat or undulating timbered/rocky areas where existing tracks do not exist. These can range from tracks required over flat plains country, or involve the formation of tracks after cut and fill, rock removal and/or levelling. Newly constructed Category 2 access tracks would typically be topped with approved gravel. Access tracks would be appropriately compacted and graded and included drainage in the direction of the cross fall to ensure tracks could be maintained and erosion impacts from run off minimised.
³Category 3: Earth works required in wet or swampy areas. Typically construction would require excavation of unstable material, drainage works and the import of rock material. This rock would be placed upon a geotextile material to provide a stable surface to facilitate the movement of required construction plant and equipment.

Symbols and lines used in this figure are indicative and are not intended to reflect actual size of represented features.
Symbols and lines have been enhanced to aid visibility.

Source: Aerial Imagery from TransGrid 2009. [^] TransGrid 2010
¹ Fairfull and Witheridge, 2003
Commonwealth of Australia (Geoscience Australia) 2010

Drawn: AO/SB	Approved: WM/TH	Date: 21/02/2011
Job No.: 43177662	File No.: 43177662.140.mxd	
Client TransGrid		
Project FAR NORTH NSW (DUMARESQ - LISMORE 330kV TRANSMISSION LINE) PROJECT		
Title 330kV TRANSMISSION LINE ALIGNMENT AND ACCESS TRACKS AERIAL		
Figure: 2-1h		

Datum: GDA94, Projection: UTM, Grid: MGA Zone 56



LEGEND:

- Existing 96L 132kV Structure Locations[^]
- Existing Transmission Lines[^]
- Proposed 330kV Angle Positions (Indicative)[^]
- Proposed 330kV Structure Locations (Indicative)[^]
- Proposed 330kV Centreline[^]
- Proposed 330kV Easement[^]
- Substation/Switching Station
- Roads

Waterways:

- Class 1: Permanent Flow
- Class 2: Permanent / Intermittent Flow
- Class 3: Intermittent Flow

Access Tracks:

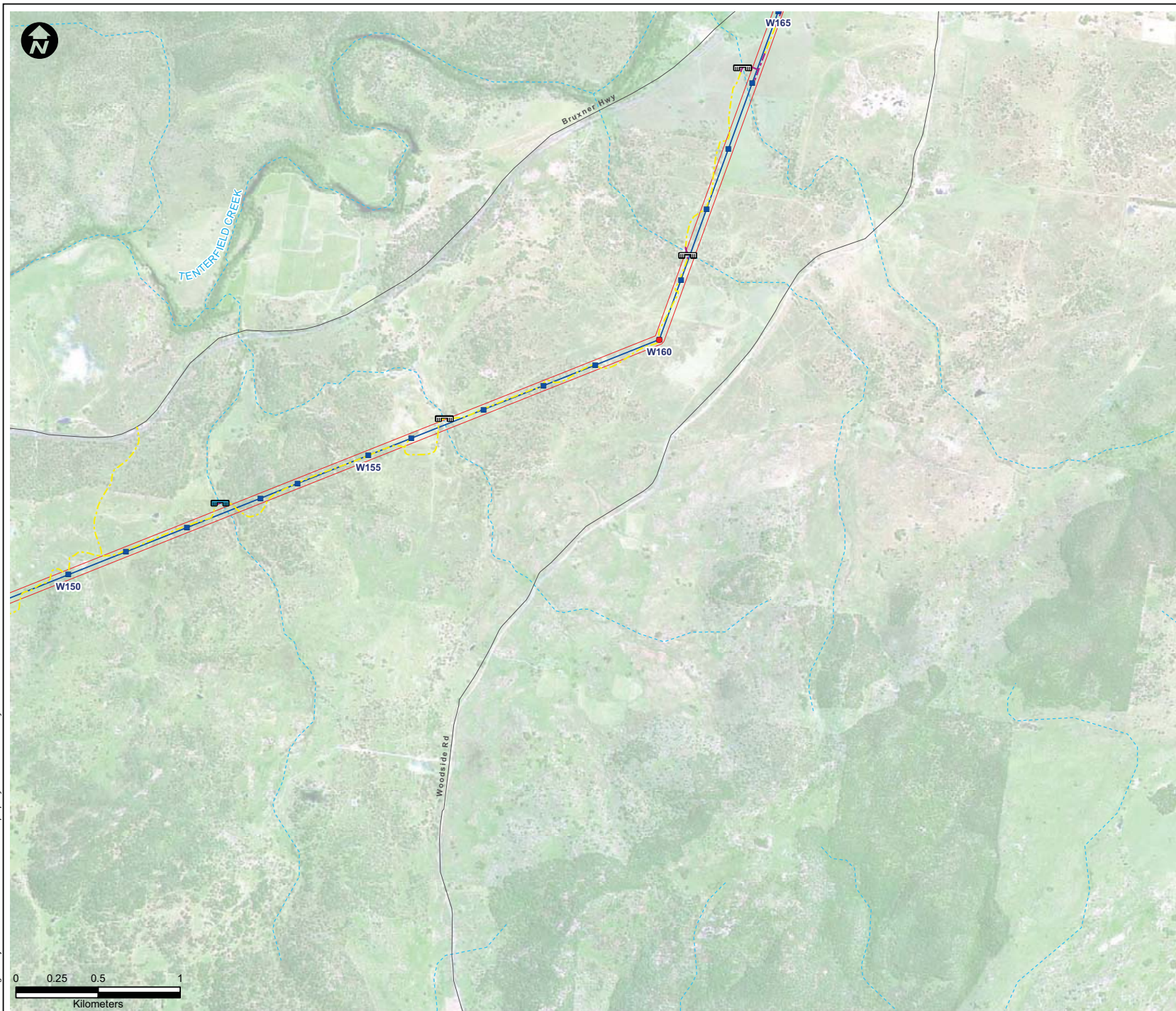
- Category 1*
- Category 2**
- Category 3***
- Creek Crossing (New)
- Creek Crossing (Upgrade Required)
- Local Government Area

*Category 1: Minimal work required. This would include removal of surface obstacles and/or minor upgrades to existing tracks (i.e. resurfacing, widening etc). Some imported sand and gravel may be required.
**Category 2: Earth works required. Construction of tracks through flat or undulating timbered/rocky areas where existing tracks do not exist. These can range from tracks required over flat plains country, or involve the formation of tracks after cut and fill, rock removal and/or levelling. Newly constructed Category 2 access tracks would typically be topped with approved gravel. Access tracks would be appropriately compacted and graded and included drainage in the direction of the cross fall to ensure tracks could be maintained and erosion impacts from run off minimised.
***Category 3: Earth works required in wet or swampy areas. Typically construction would require excavation of unstable material, drainage works and the import of rock material. This rock would be placed upon a geotextile material to provide a stable surface to facilitate the movement of required construction plant and equipment.

Symbols and lines used in this figure are indicative and are not intended to reflect actual size of represented features.
Symbols and lines have been enhanced to aid visibility.
Source: Aerial Imagery from TransGrid 2009. [^] TransGrid 2010
^{*} Fairfull and Witheridge, 2003
Commonwealth of Australia (Geoscience Australia) 2010

Drawn: AO/SB	Approved: WM/TH	Date: 21/02/2011
Job No.: 43177662	File No.: 43177662.140.mxd	
Client TransGrid		
Project FAR NORTH NSW (DUMARESQ - LISMORE 330kV TRANSMISSION LINE) PROJECT		
Title 330kV TRANSMISSION LINE ALIGNMENT AND ACCESS TRACKS AERIAL		
Figure: 2-1i		

Datum: GDA94, Projection: UTM, Grid: MGA Zone 56



Datum: GDA94, Projection: UTM, Grid: MGA Zone 56

LEGEND:

- Existing 96L 132kV Structure Locations[^]
- Existing Transmission Lines[^]
- Proposed 330kV Angle Positions (Indicative)[^]
- Proposed 330kV Structure Locations (Indicative)[^]
- Proposed 330kV Centreline[^]
- Proposed 330kV Easement[^]
- Substation/Switching Station
- Roads

Waterways¹:

- Class 1: Permanent Flow
- Class 2: Permanent / Intermittent Flow
- Class 3: Intermittent Flow

Access Tracks:

- Category 1*
- Category 2**
- Category 3***

Creek Crossing (New)

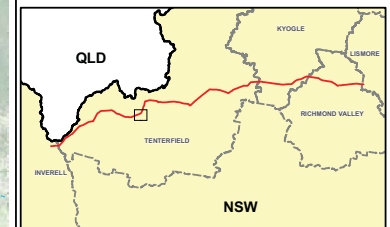
Creek Crossing (Upgrade Required)

Local Government Area

¹Category 1: Minimal work required. This would include removal of surface obstacles and/or minor upgrades to existing tracks (i.e. resurfacing, widening etc). Some imported sand and gravel may be required.

²Category 2: Earth works required. Construction of tracks through flat or undulating timbered/rocky areas where existing tracks do not exist. These can range from tracks required over flat plains country, or involve the formation of tracks after cut and fill, rock removal and/or levelling. Newly constructed Category 2 access tracks would typically be topped with approved gravel. Access tracks would be appropriately compacted and graded and included drainage in the direction of the cross fall to ensure tracks could be maintained and erosion impacts from run off minimised.

³Category 3: Earth works required in wet or swampy areas. Typically construction would require excavation of unstable material, drainage works and the import of rock material. This rock would be placed upon a geotextile material to provide a stable surface to facilitate the movement of required construction plant and equipment.



Symbols and lines used in this figure are indicative and are not intended to reflect actual size of represented features.
Symbols and lines have been enhanced to aid visibility.

Source: Aerial Imagery from TransGrid 2009. [^] TransGrid 2010
¹ Fairfull and Witheridge, 2003
Commonwealth of Australia (Geoscience Australia) 2010

Drawn: AO/SB | Approved: WM/TH | Date: 21/02/2011

Job No.: 43177662 | File No.: 43177662.140.mxd

Client
TransGrid

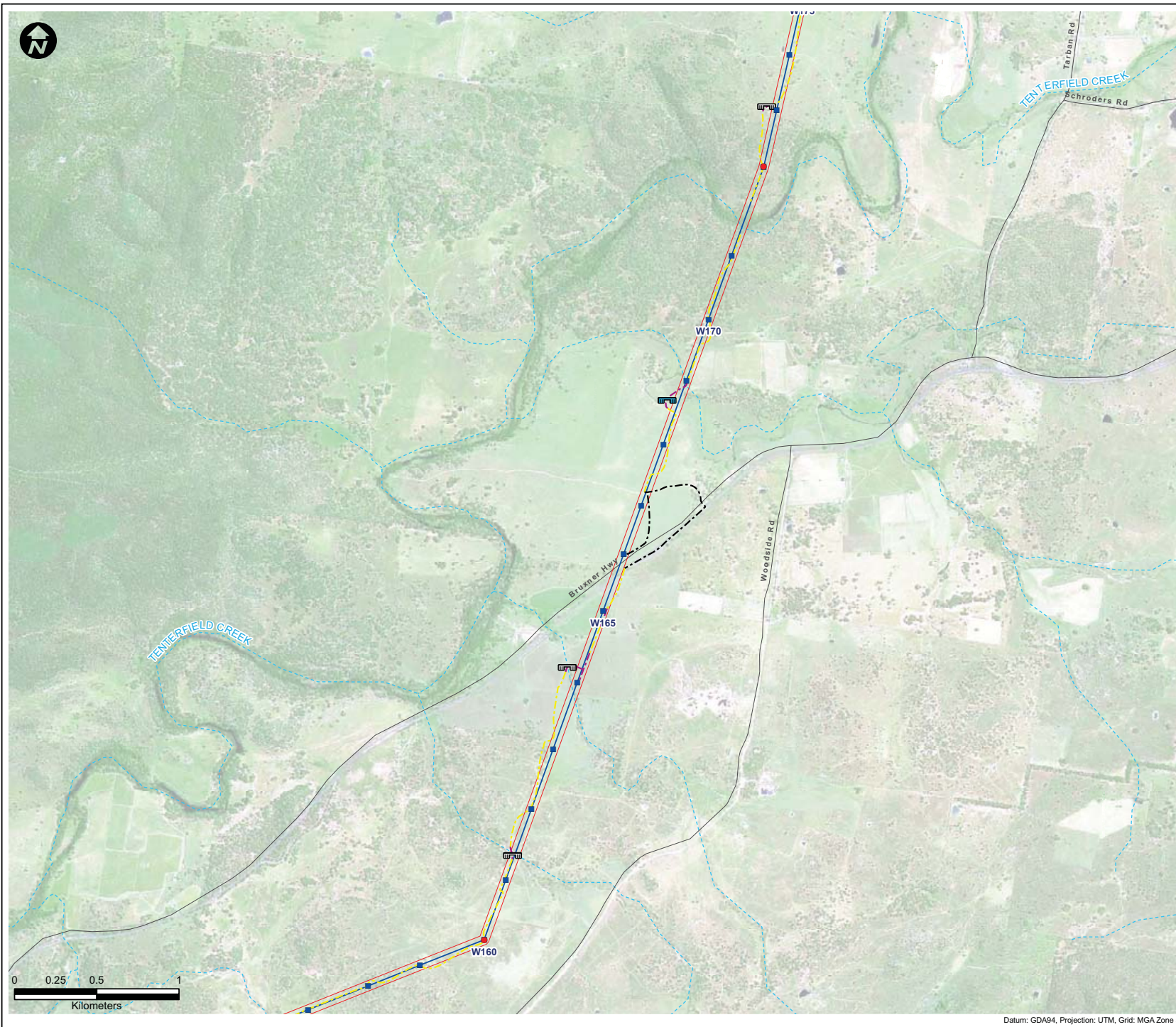
Project
FAR NORTH NSW
(DUMARESQ - LISMORE
330kV TRANSMISSION LINE)
PROJECT

Title
330kV TRANSMISSION LINE
ALIGNMENT AND ACCESS TRACKS
AERIAL

Figure: 2-1j

URS

This drawing is subject to COPYRIGHT. It remains the property of URS Australia Pty Ltd.



LEGEND:

- Existing 96L 132kV Structure Locations[^]
- Existing Transmission Lines[^]
- Proposed 330kV Angle Positions (Indicative)[^]
- Proposed 330kV Structure Locations (Indicative)[^]
- Proposed 330kV Centreline[^]
- Proposed 330kV Easement[^]
- Substation/Switching Station
- Roads

Waterways:

- Class 1: Permanent Flow
- Class 2: Permanent / Intermittent Flow
- Class 3: Intermittent Flow

Access Tracks:

- Category 1*
- Category 2**
- Category 3***
- Creek Crossing (New)
- Creek Crossing (Upgrade Required)
- Local Government Area

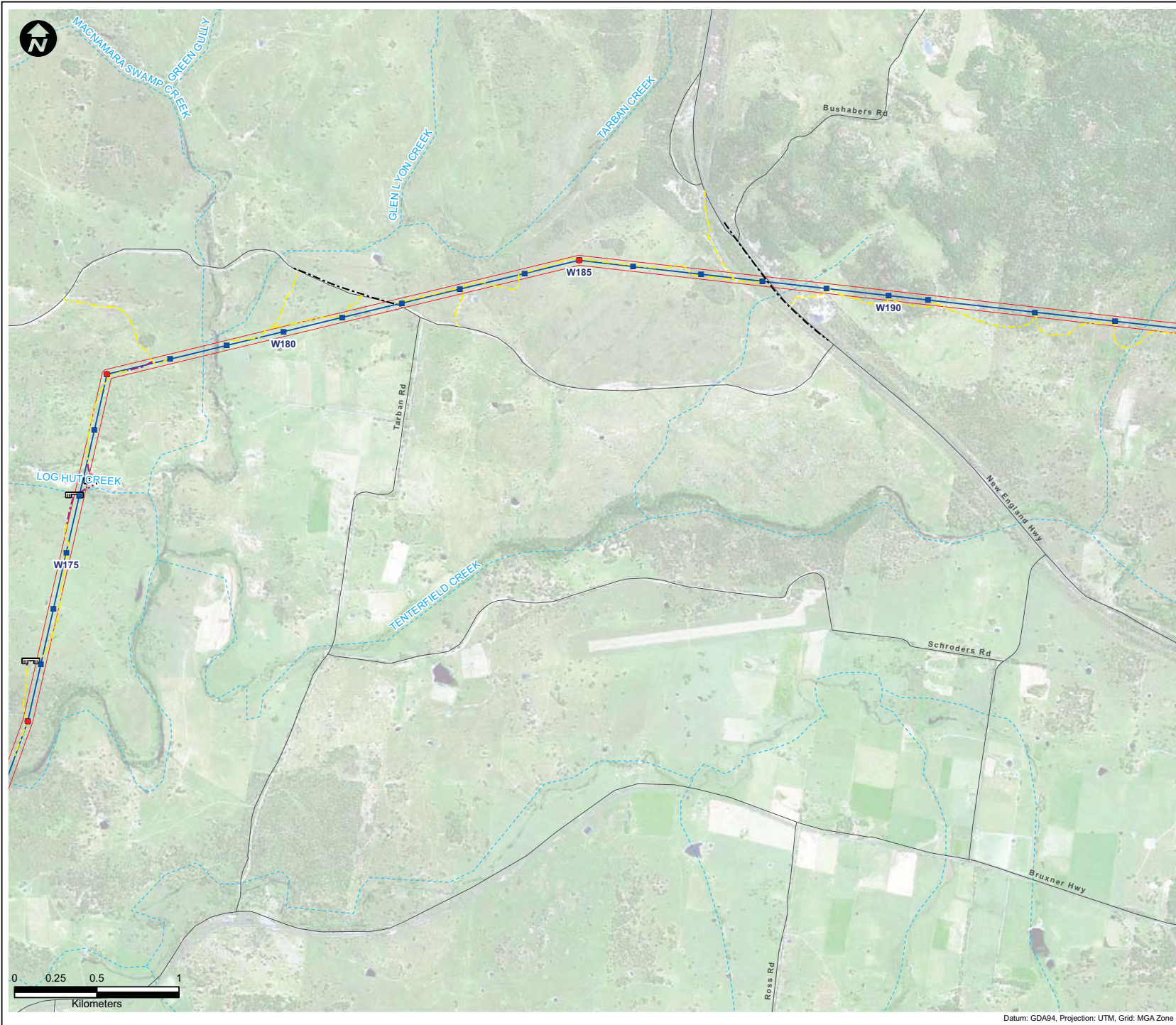
^{*}Category 1: Minimal work required. This would include removal of surface obstacles and/or minor upgrades to existing tracks (i.e. resurfacing, widening etc). Some imported sand and gravel may be required.
^{**}Category 2: Earth works required. Construction of tracks through flat or undulating timbered/rocky areas where existing tracks do not exist. These can range from tracks required over flat plains country, or involve the formation of tracks after cut and fill, rock removal and/or levelling. Newly constructed Category 2 access tracks would typically be topped with approved gravel. Access tracks would be appropriately compacted and graded and included drainage in the direction of the cross fall to ensure tracks could be maintained and erosion impacts from run off minimised.
^{***}Category 3: Earth works required in wet or swampy areas. Typically construction would require excavation of unstable material, drainage works and the import of rock material. This rock would be placed upon a geotextile material to provide a stable surface to facilitate the movement of required construction plant and equipment.

Symbols and lines used in this figure are indicative and are not intended to reflect actual size of represented features.
Symbols and lines have been enhanced to aid visibility.

Source: Aerial Imagery from TransGrid 2009. [^] TransGrid 2010
^{*} Fairfull and Witheridge, 2003
Commonwealth of Australia (Geoscience Australia) 2010

Drawn: AO/SB	Approved: WM/TH	Date: 21/02/2011
Job No.: 43177662	File No.: 43177662.140.mxd	
Client TransGrid		
Project FAR NORTH NSW (DUMARESQ - LISMORE 330kV TRANSMISSION LINE) PROJECT		
Title 330kV TRANSMISSION LINE ALIGNMENT AND ACCESS TRACKS AERIAL		
Figure: 2-1k		

Datum: GDA94, Projection: UTM, Grid: MGA Zone 56



LEGEND:

- Existing 96L 132kV Structure Locations[^]
- Existing Transmission Lines[^]
- Proposed 330kV Angle Positions (Indicative)[^]
- Proposed 330kV Structure Locations (Indicative)[^]
- Proposed 330kV Centreline[^]
- Proposed 330kV Easement[^]
- Substation/Switching Station
- Roads

Waterways¹:

- Class 1: Permanent Flow
- Class 2: Permanent / Intermittent Flow
- Class 3: Intermittent Flow

Access Tracks:

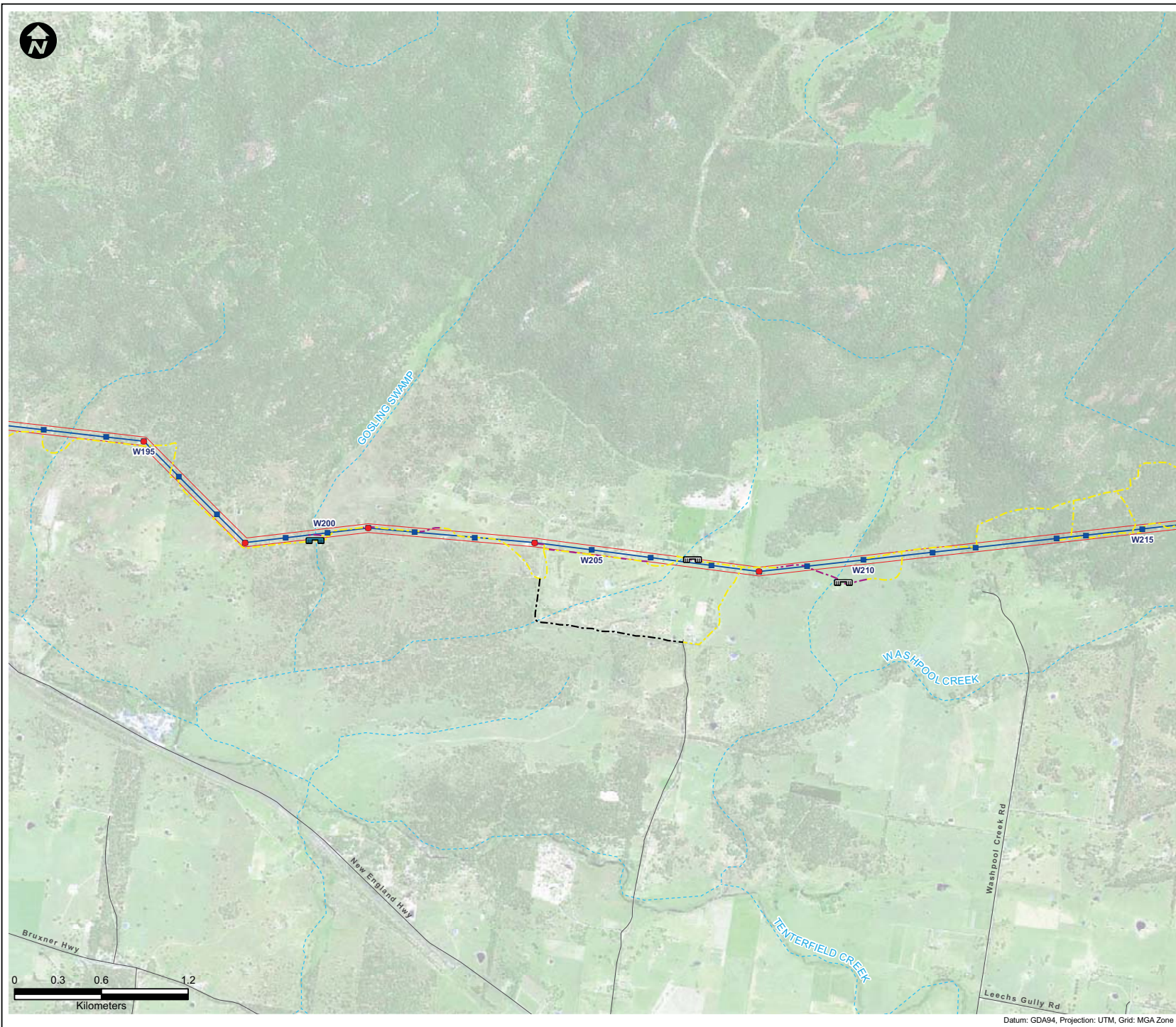
- Category 1*
- Category 2**
- Category 3***
- Creek Crossing (New)
- Creek Crossing (Upgrade Required)
- Local Government Area

¹Category 1: Minimal work required. This would include removal of surface obstacles and/or minor upgrades to existing tracks (i.e. resurfacing, widening etc). Some imported sand and gravel may be required.
²Category 2: Earth works required. Construction of tracks through flat or undulating timbered/rocky areas where existing tracks do not exist. These can range from tracks required over flat plains country, or involve the formation of tracks after cut and fill, rock removal and/or levelling. Newly constructed Category 2 access tracks would typically be topped with approved gravel. Access tracks would be appropriately compacted and graded and included drainage in the direction of the cross fall to ensure tracks could be maintained and erosion impacts from run off minimised.
³Category 3: Earth works required in wet or swampy areas. Typically construction would require excavation of unstable material, drainage works and the import of rock material. This rock would be placed upon a geotextile material to provide a stable surface to facilitate the movement of required construction plant and equipment.

Symbols and lines used in this figure are indicative and are not intended to reflect actual size of represented features.
Symbols and lines have been enhanced to aid visibility.
Source: Aerial Imagery from TransGrid 2009. [^] TransGrid 2010
¹ Fairfull and Witheridge, 2003
Commonwealth of Australia (Geoscience Australia) 2010

Drawn: AO/SB	Approved: WM/TH	Date: 21/02/2011
Job No.: 43177662	File No.: 43177662.140.mxd	
Client TransGrid		
Project FAR NORTH NSW (DUMARESQ - LISMORE 330kV TRANSMISSION LINE) PROJECT		
Title 330kV TRANSMISSION LINE ALIGNMENT AND ACCESS TRACKS AERIAL		
Figure: 2-11		

Datum: GDA94, Projection: UTM, Grid: MGA Zone 56



LEGEND:

- Existing 96L 132kV Structure Locations[^]
- Existing Transmission Lines[^]
- Proposed 330kV Angle Positions (Indicative)[^]
- Proposed 330kV Structure Locations (Indicative)[^]
- Proposed 330kV Centreline[^]
- Proposed 330kV Easement[^]
- Substation/Switching Station
- Roads

Waterways:

- Class 1: Permanent Flow
- Class 2: Permanent / Intermittent Flow
- Class 3: Intermittent Flow

Access Tracks:

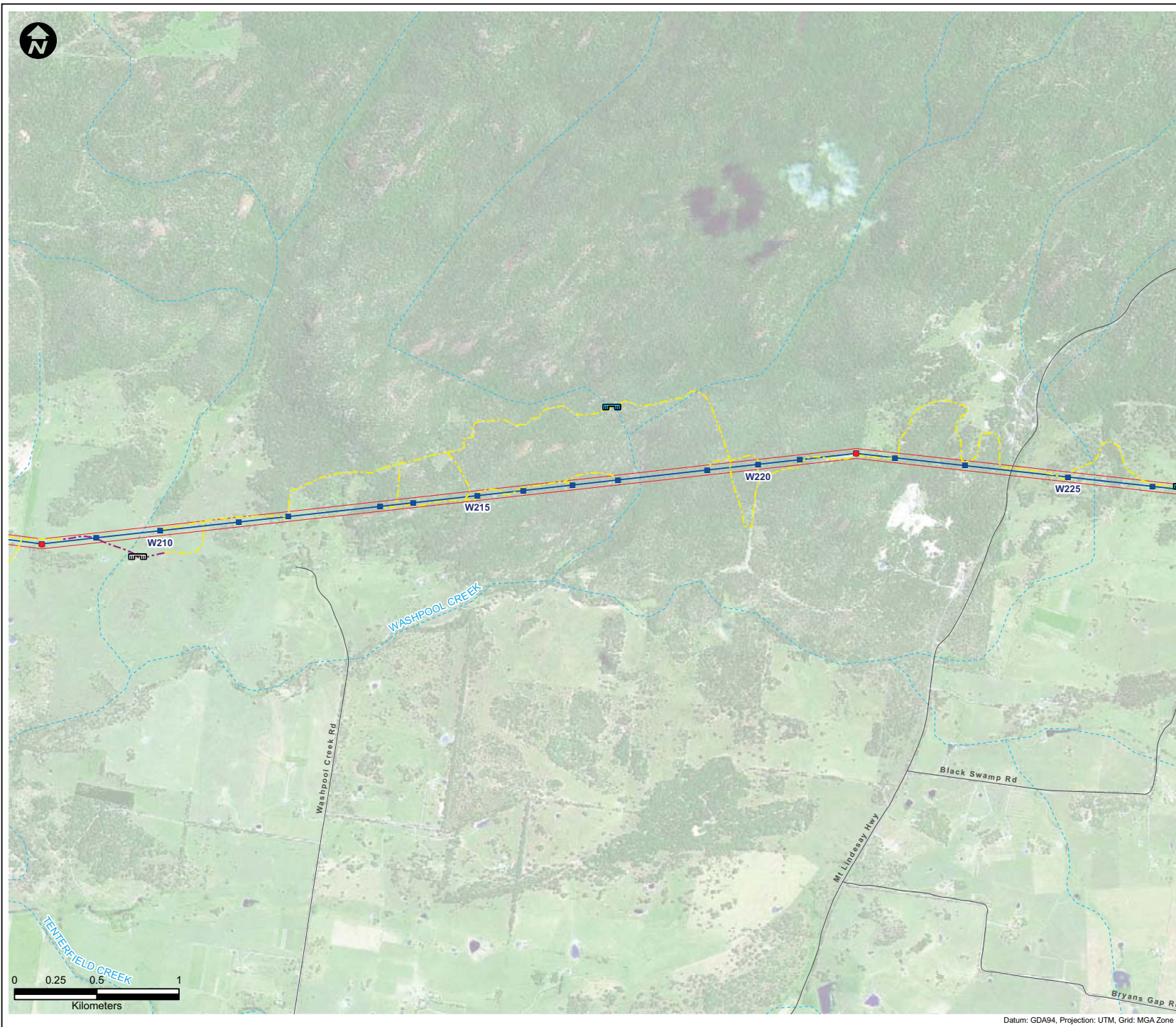
- Category 1*
- Category 2**
- Category 3***
- Creek Crossing (New)
- Creek Crossing (Upgrade Required)
- Local Government Area

^{*}Category 1: Minimal work required. This would include removal of surface obstacles and/or minor upgrades to existing tracks (i.e. resurfacing, widening etc). Some imported sand and gravel may be required.
^{**}Category 2: Earth works required. Construction of tracks through flat or undulating timbered/rocky areas where existing tracks do not exist. These can range from tracks required over flat plains country, or involve the formation of tracks after cut and fill, rock removal and/or levelling. Newly constructed Category 2 access tracks would typically be topped with approved gravel. Access tracks would be appropriately compacted and graded and included drainage in the direction of the cross fall to ensure tracks could be maintained and erosion impacts from run off minimised.
^{***}Category 3: Earth works required in wet or swampy areas. Typically construction would require excavation of unstable material, drainage works and the import of rock material. This rock would be placed upon a geotextile material to provide a stable surface to facilitate the movement of required construction plant and equipment.

Symbols and lines used in this figure are indicative and are not intended to reflect actual size of represented features.
Symbols and lines have been enhanced to aid visibility.
Source: Aerial Imagery from TransGrid 2009. [^] TransGrid 2010
^{*} Fairfull and Witheridge, 2003
Commonwealth of Australia (Geoscience Australia) 2010

Drawn: AO/SB	Approved: WM/TH	Date: 21/02/2011
Job No.: 43177662	File No.: 43177662.140.mxd	
Client TransGrid		
Project FAR NORTH NSW (DUMARESQ - LISMORE 330kV TRANSMISSION LINE) PROJECT		
Title 330kV TRANSMISSION LINE ALIGNMENT AND ACCESS TRACKS AERIAL		
Figure: 2-1m		

Datum: GDA94, Projection: UTM, Grid: MGA Zone 56



LEGEND:

- Existing 96L 132kV Structure Locations[^]
- Existing Transmission Lines[^]
- Proposed 330kV Angle Positions (Indicative)[^]
- Proposed 330kV Structure Locations (Indicative)[^]
- Proposed 330kV Centreline[^]
- Proposed 330kV Easement[^]
- Substation/Switching Station
- Roads

Waterways:

- Class 1: Permanent Flow
- Class 2: Permanent / Intermittent Flow
- Class 3: Intermittent Flow

Access Tracks:

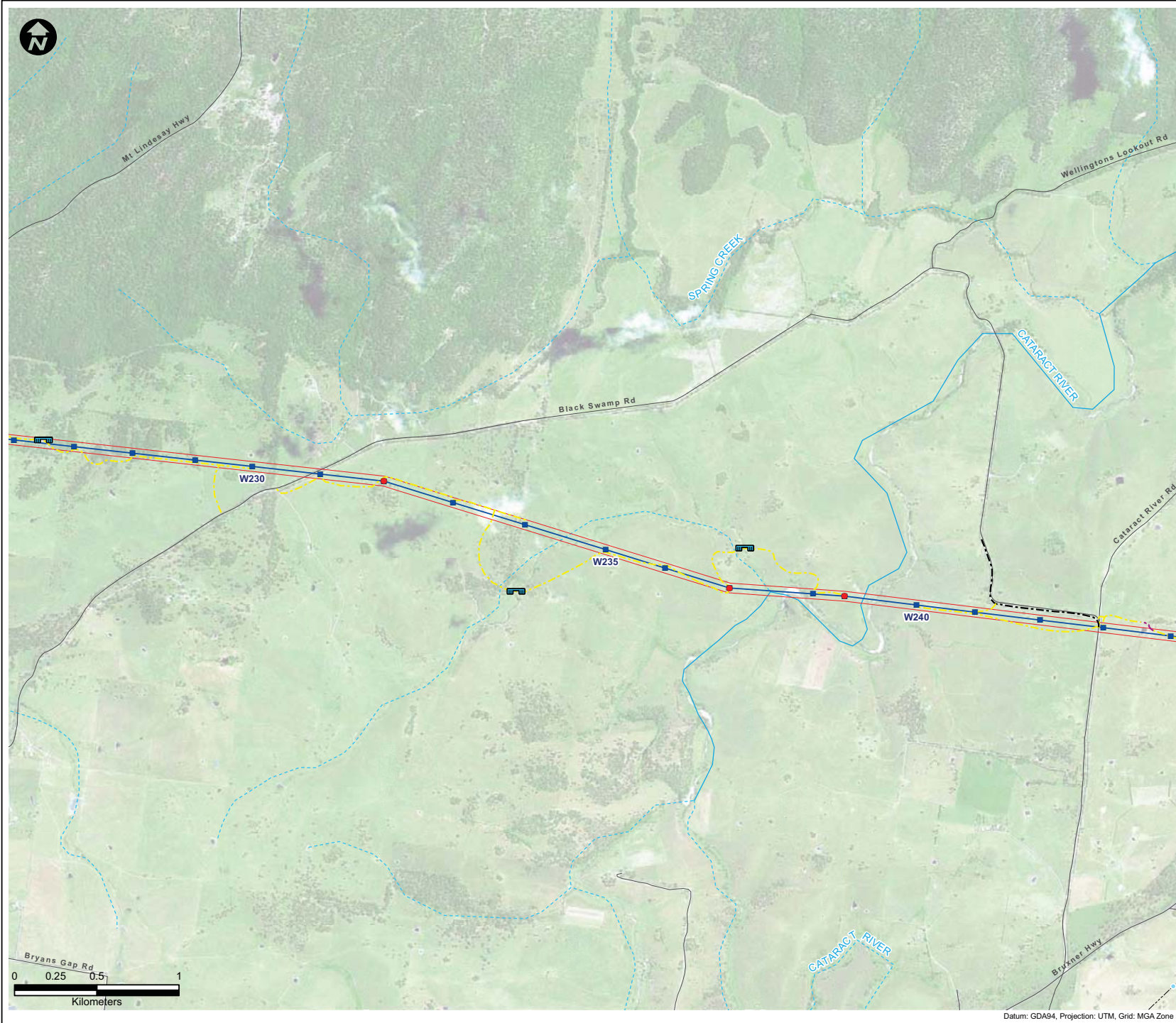
- Category 1*
- Category 2**
- Category 3***
- Creek Crossing (New)
- Creek Crossing (Upgrade Required)
- Local Government Area

^{*}Category 1: Minimal work required. This would include removal of surface obstacles and/or minor upgrades to existing tracks (i.e. resurfacing, widening etc). Some imported sand and gravel may be required.
^{**}Category 2: Earth works required. Construction of tracks through flat or undulating timbered/rocky areas where existing tracks do not exist. These can range from tracks required over flat plains country, or involve the formation of tracks after cut and fill, rock removal and/or levelling. Newly constructed Category 2 access tracks would typically be topped with approved gravel. Access tracks would be appropriately compacted and graded and included drainage in the direction of the cross fall to ensure tracks could be maintained and erosion impacts from run off minimised.
^{***}Category 3: Earth works required in wet or swampy areas. Typically construction would require excavation of unstable material, drainage works and the import of rock material. This rock would be placed upon a geotextile material to provide a stable surface to facilitate the movement of required construction plant and equipment.

Symbols and lines used in this figure are indicative and are not intended to reflect actual size of represented features.
Symbols and lines have been enhanced to aid visibility.
Source: Aerial Imagery from TransGrid 2009. [^] TransGrid 2010
^{*} Fairfull and Witheridge, 2003
Commonwealth of Australia (Geoscience Australia) 2010

Drawn: AO/SB	Approved: WM/TH	Date: 21/02/2011
Job No.: 43177662	File No.: 43177662.140.mxd	
Client TransGrid		
Project FAR NORTH NSW (DUMARESQ - LISMORE 330kV TRANSMISSION LINE) PROJECT		
Title 330kV TRANSMISSION LINE ALIGNMENT AND ACCESS TRACKS AERIAL		
Figure: 2-1n		

Datum: GDA94, Projection: UTM, Grid: MGA Zone 56



LEGEND:

- Existing 96L 132kV Structure Locations[^]
- Existing Transmission Lines[^]
- Proposed 330kV Angle Positions (Indicative)[^]
- Proposed 330kV Structure Locations (Indicative)[^]
- Proposed 330kV Centreline[^]
- Proposed 330kV Easement[^]
- Substation/Switching Station
- Roads

Waterways:

- Class 1: Permanent Flow
- Class 2: Permanent / Intermittent Flow
- Class 3: Intermittent Flow

Access Tracks:

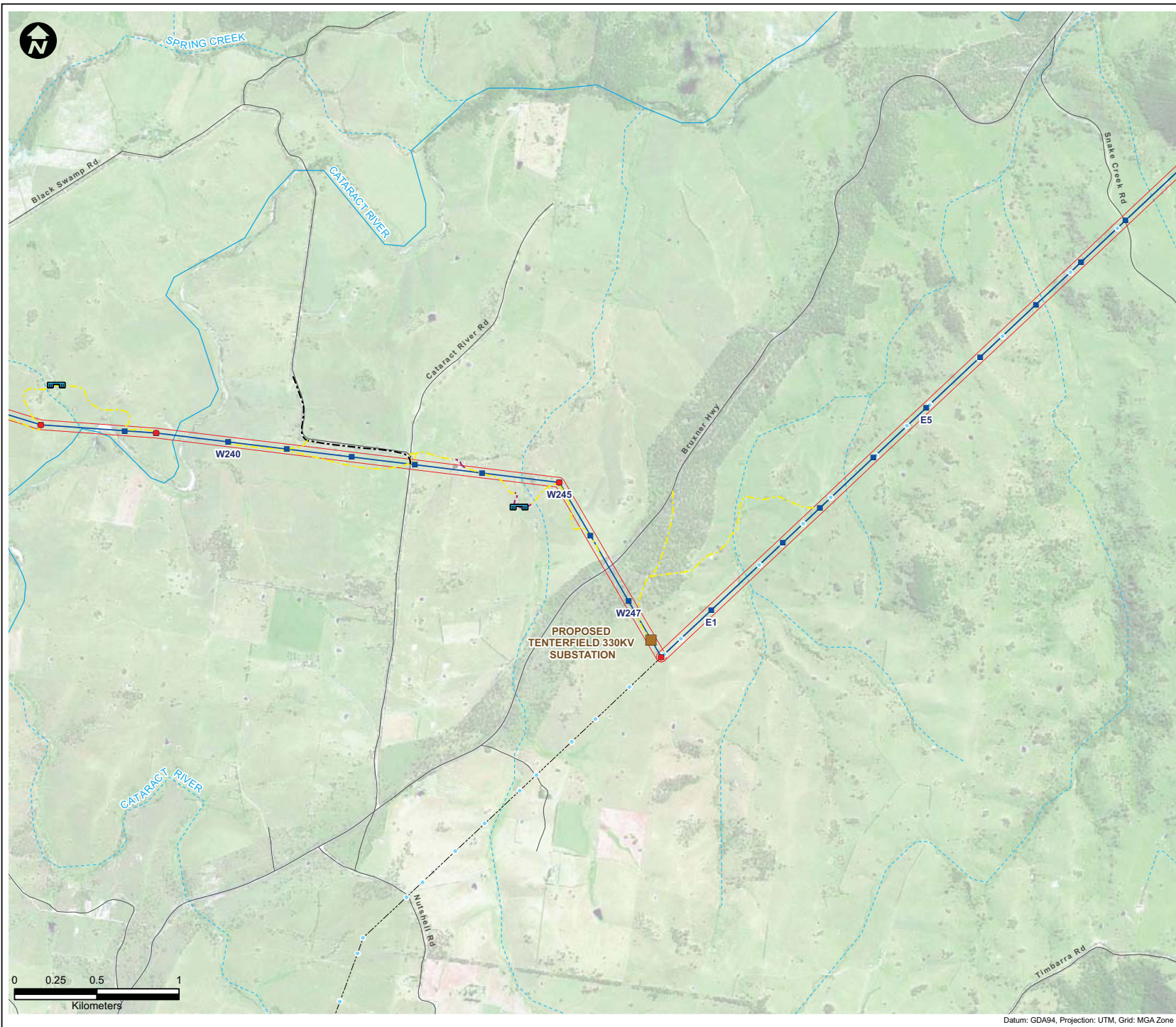
- Category 1*
- Category 2**
- Category 3***
- Creek Crossing (New)
- Creek Crossing (Upgrade Required)
- Local Government Area

^{*}Category 1: Minimal work required. This would include removal of surface obstacles and/or minor upgrades to existing tracks (i.e. resurfacing, widening etc). Some imported sand and gravel may be required.
^{**}Category 2: Earth works required. Construction of tracks through flat or undulating timbered/rocky areas where existing tracks do not exist. These can range from tracks required over flat plains country, or involve the formation of tracks after cut and fill, rock removal and/or levelling. Newly constructed Category 2 access tracks would typically be topped with approved gravel. Access tracks would be appropriately compacted and graded and included drainage in the direction of the cross fall to ensure tracks could be maintained and erosion impacts from run off minimised.
^{***}Category 3: Earth works required in wet or swampy areas. Typically construction would require excavation of unstable material, drainage works and the import of rock material. This rock would be placed upon a geotextile material to provide a stable surface to facilitate the movement of required construction plant and equipment.

Symbols and lines used in this figure are indicative and are not intended to reflect actual size of represented features.
Symbols and lines have been enhanced to aid visibility.
Source: Aerial Imagery from TransGrid 2009. [^] TransGrid 2010
^{*} Fairfull and Witheridge, 2003
Commonwealth of Australia (Geoscience Australia) 2010

Drawn: AO/SB	Approved: WM/TH	Date: 21/02/2011
Job No.: 43177662	File No.: 43177662.140.mxd	
Client TransGrid		
Project FAR NORTH NSW (DUMARESQ - LISMORE 330kV TRANSMISSION LINE) PROJECT		
Title 330kV TRANSMISSION LINE ALIGNMENT AND ACCESS TRACKS AERIAL		
Figure: 2-10		

Datum: GDA94, Projection: UTM, Grid: MGA Zone 56



LEGEND:

- Existing 96L 132kV Structure Locations[^]
- Existing Transmission Lines[^]
- Proposed 330kV Angle Positions (Indicative)[^]
- Proposed 330kV Structure Locations (Indicative)[^]
- Proposed 330kV Centreline[^]
- Proposed 330kV Easement[^]
- Substation/Switching Station
- Roads

Waterways¹:

- Class 1: Permanent Flow
- Class 2: Permanent / Intermittent Flow
- Class 3: Intermittent Flow

Access Tracks:

- Category 1*
- Category 2**
- Category 3***

- Creek Crossing (New)
- Creek Crossing (Upgrade Required)
- Local Government Area

¹Category 1: Minimal work required. This would include removal of surface obstacles and/or minor upgrades to existing tracks (i.e. resurfacing, widening etc). Some imported sand and gravel may be required.

²Category 2: Earth works required. Construction of tracks through flat or undulating timbered/rocky areas where existing tracks do not exist. These can range from tracks required over flat plains country, or involve the formation of tracks after cut and fill, rock removal and/or levelling. Newly constructed Category 2 access tracks would typically be topped with approved gravel. Access tracks would be appropriately compacted and graded and included drainage in the direction of the cross fall to ensure tracks could be maintained and erosion impacts from run off minimised.

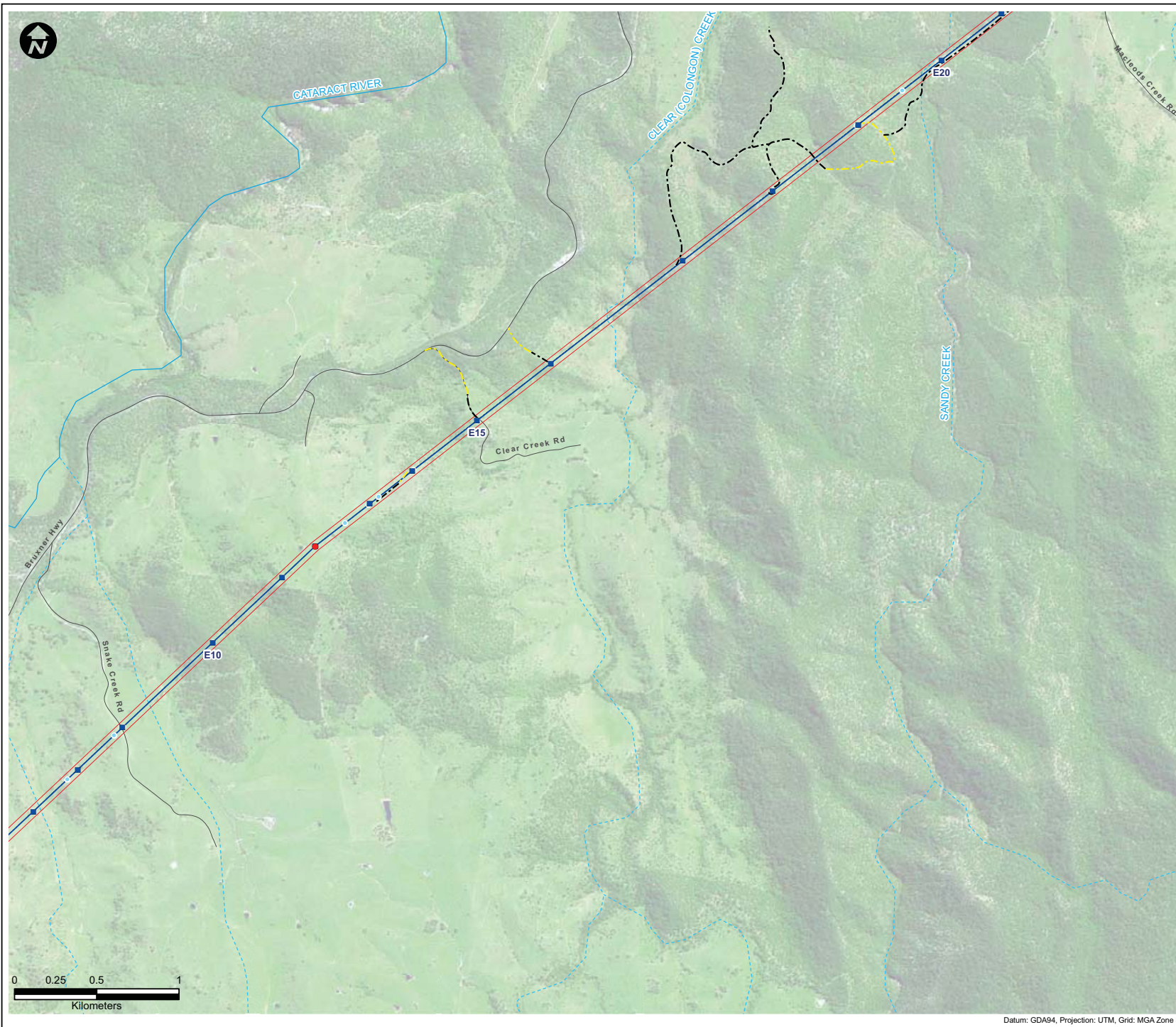
³Category 3: Earth works required in wet or swampy areas. Typically construction would require excavation of unstable material, drainage works and the import of rock material. This rock would be placed upon a geotextile material to provide a stable surface to facilitate the movement of required construction plant and equipment.

Symbols and lines used in this figure are indicative and are not intended to reflect actual size of represented features.
 Symbols and lines have been enhanced to aid visibility.

Source: Aerial Imagery from TransGrid 2009. [^] TransGrid 2010
¹ Fairfull and Witheridge, 2003
 Commonwealth of Australia (Geoscience Australia) 2010

Drawn: AO/SB	Approved: WM/TH	Date: 21/02/2011
Job No.: 43177662	File No.: 43177662.140.mxd	
Client TransGrid		
Project FAR NORTH NSW (DUMARESQ - LISMORE 330kV TRANSMISSION LINE) PROJECT		
Title 330kV TRANSMISSION LINE ALIGNMENT AND ACCESS TRACKS AERIAL		
Figure: 2-1p		

Datum: GDA94, Projection: UTM, Grid: MGA Zone 56



LEGEND:

- Existing 96L 132kV Structure Locations^A
- Existing Transmission Lines^A
- Proposed 330kV Angle Positions (Indicative)^A
- Proposed 330kV Structure Locations (Indicative)^A
- Proposed 330kV Centreline^A
- Proposed 330kV Easement^A
- Substation/Switching Station
- Roads

Waterways¹:

- Class 1: Permanent Flow
- Class 2: Permanent / Intermittent Flow
- Class 3: Intermittent Flow

Access Tracks:

- Category 1*
- Category 2**
- Category 3***
- Creek Crossing (New)
- Creek Crossing (Upgrade Required)
- Local Government Area

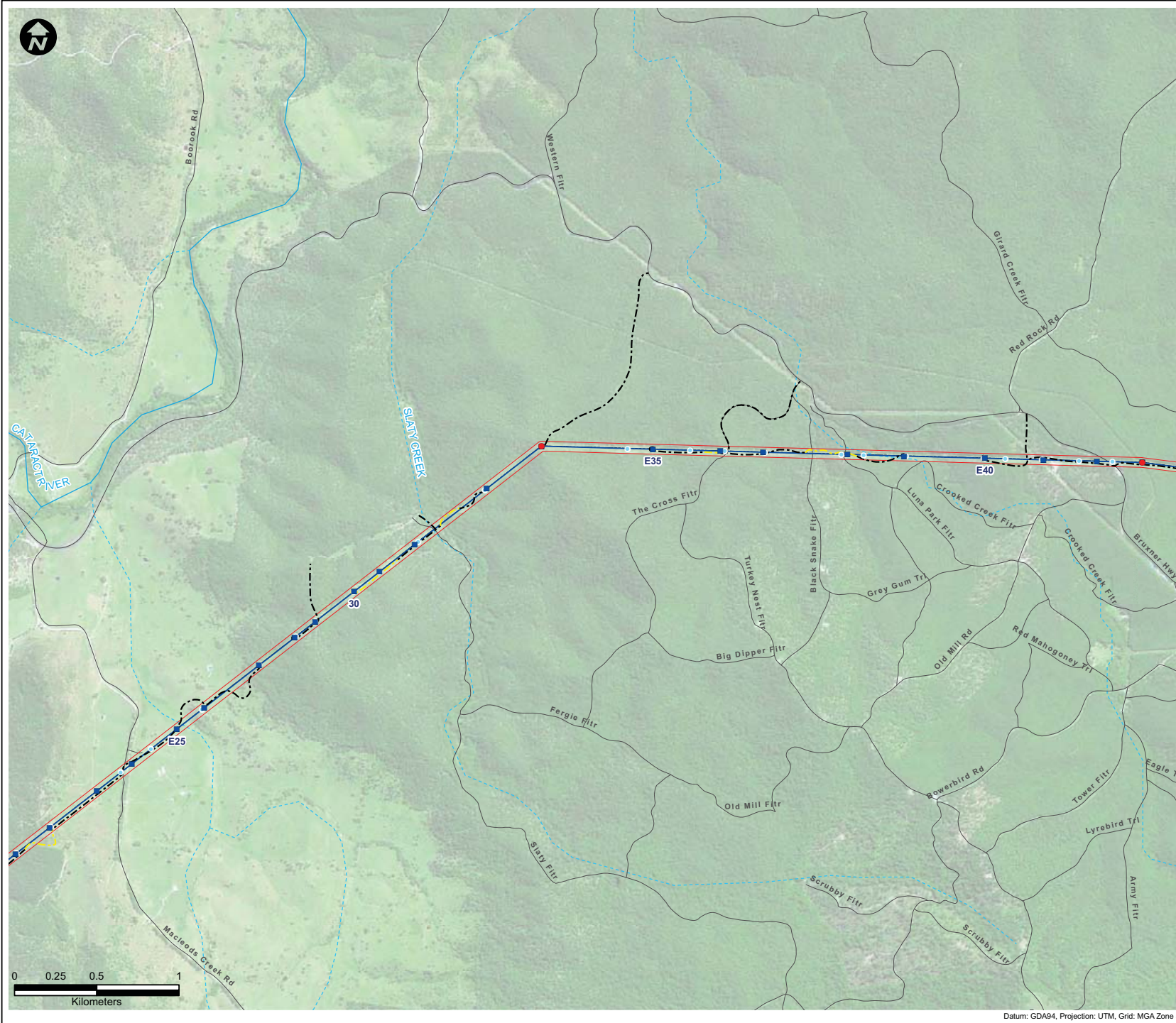
¹Category 1: Minimal work required. This would include removal of surface obstacles and/or minor upgrades to existing tracks (i.e. resurfacing, widening etc). Some imported sand and gravel may be required.
²Category 2: Earth works required. Construction of tracks through flat or undulating timbered/rocky areas where existing tracks do not exist. These can range from tracks required over flat plains country, or involve the formation of tracks after cut and fill, rock removal and/or levelling. Newly constructed Category 2 access tracks would typically be topped with approved gravel. Access tracks would be appropriately compacted and graded and included drainage in the direction of the cross fall to ensure tracks could be maintained and erosion impacts from run off minimised.
³Category 3: Earth works required in wet or swampy areas. Typically construction would require excavation of unstable material, drainage works and the import of rock material. This rock would be placed upon a geotextile material to provide a stable surface to facilitate the movement of required construction plant and equipment.

Symbols and lines used in this figure are indicative and are not intended to reflect actual size of represented features.
Symbols and lines have been enhanced to aid visibility.

Source: Aerial Imagery from TransGrid 2009. ^A TransGrid 2010
¹ Fairfull and Witheridge, 2003
Commonwealth of Australia (Geoscience Australia) 2010

Drawn: AO/SB	Approved: VM/TH	Date: 21/02/2011
Job No.: 43177662	File No.: 43177662.140.mxd	
Client TransGrid		
Project FAR NORTH NSW (DUMARESQ - LISMORE 330kV TRANSMISSION LINE) PROJECT		
Title 330kV TRANSMISSION LINE ALIGNMENT AND ACCESS TRACKS AERIAL		
Figure: 2-1q		

Datum: GDA94, Projection: UTM, Grid: MGA Zone 56



LEGEND:

- Existing 96L 132kV Structure Locations[^]
- Existing Transmission Lines[^]
- Proposed 330kV Angle Positions (Indicative)[^]
- Proposed 330kV Structure Locations (Indicative)[^]
- Proposed 330kV Centreline[^]
- Proposed 330kV Easement[^]
- Substation/Switching Station
- Roads

Waterways¹:

- Class 1: Permanent Flow
- Class 2: Permanent / Intermittent Flow
- Class 3: Intermittent Flow

Access Tracks:

- Category 1^{*}
- Category 2^{**}
- Category 3^{***}
- Creek Crossing (New)
- Creek Crossing (Upgrade Required)
- Local Government Area

^{*}Category 1: Minimal work required. This would include removal of surface obstacles and/or minor upgrades to existing tracks (i.e. resurfacing, widening etc). Some imported sand and gravel may be required.

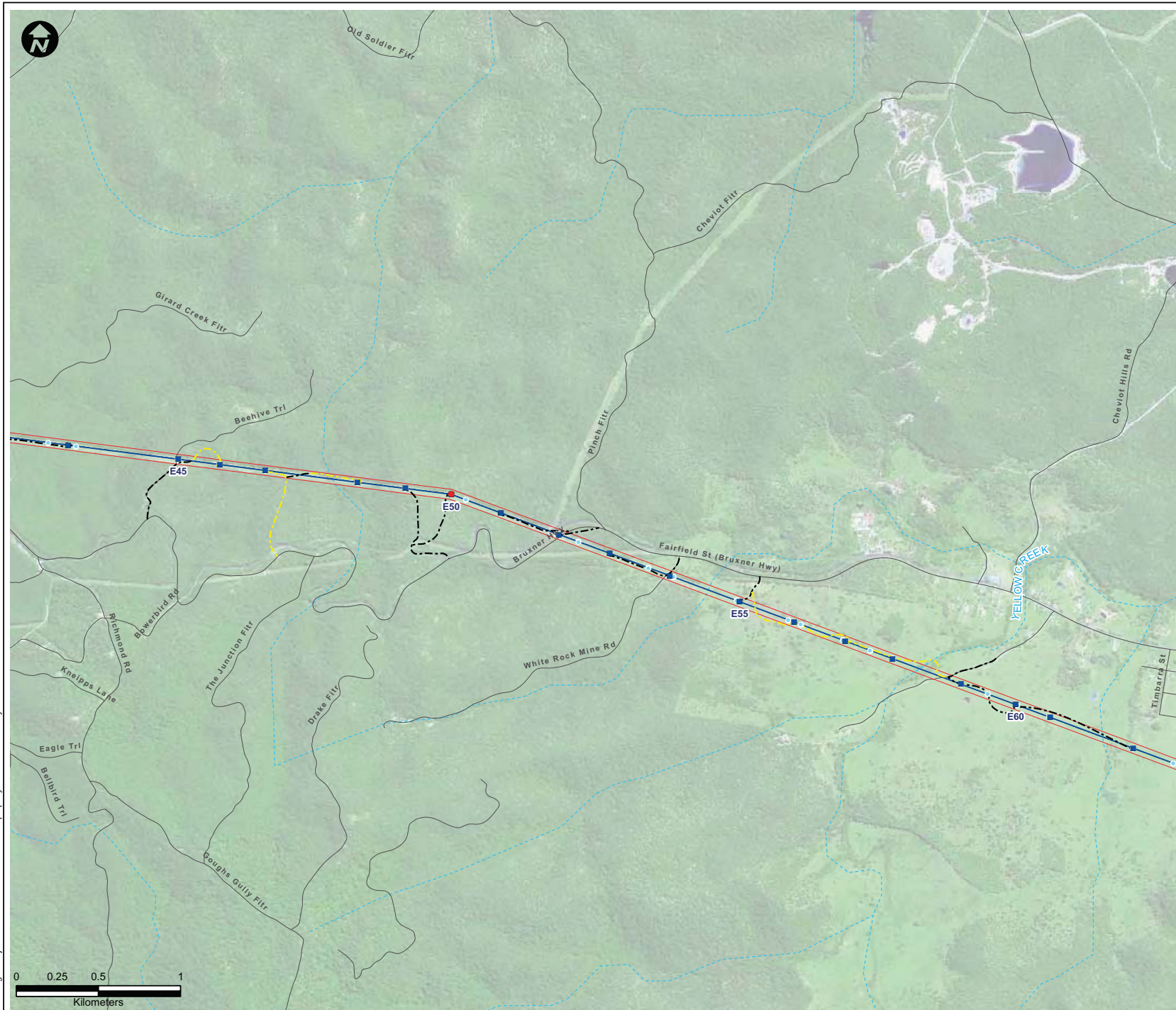
^{**}Category 2: Earth works required. Construction of tracks through flat or undulating timbered/rocky areas where existing tracks do not exist. These can range from tracks required over flat plains country, or involve the formation of tracks after cut and fill, rock removal and/or levelling. Newly constructed Category 2 access tracks would typically be topped with approved gravel. Access tracks would be appropriately compacted and graded and included drainage in the direction of the cross fall to ensure tracks could be maintained and erosion impacts from run off minimised.

^{***}Category 3: Earth works required in wet or swampy areas. Typically construction would require excavation of unstable material, drainage works and the import of rock material. This rock would be placed upon a geotextile material to provide a stable surface to facilitate the movement of required construction plant and equipment.

Symbols and lines used in this figure are indicative and are not intended to reflect actual size of represented features.
 Symbols and lines have been enhanced to aid visibility.

Source: Aerial Imagery from TransGrid 2009. [^] TransGrid 2010
^{*} Fairfull and Witheridge, 2003
 Commonwealth of Australia (Geoscience Australia) 2010

Drawn: AO/SB	Approved: WM/TH	Date: 21/02/2011
Job No.: 43177662	File No.: 43177662.140.mxd	
Client TransGrid		
Project FAR NORTH NSW (DUMARESQ - LISMORE 330kV TRANSMISSION LINE) PROJECT		
Title 330kV TRANSMISSION LINE ALIGNMENT AND ACCESS TRACKS AERIAL		
Figure: 2-1r		



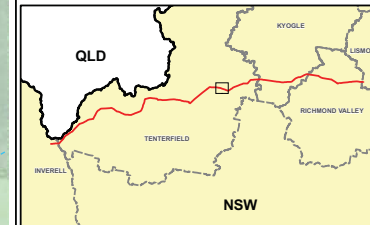
LEGEND:

- Existing 96L 132kV Structure Locations^A
- Existing Transmission Lines^A
- Proposed 330kV Angle Positions (Indicative)^A
- Proposed 330kV Structure Locations (Indicative)^A
- Proposed 330kV Centreline^A
- Proposed 330kV Easement^A
- Substation/Switching Station
- Roads
- Waterways¹:**
 - Class 1: Permanent Flow
 - Class 2: Permanent / Intermittent Flow
 - Class 3: Intermittent Flow
- Access Tracks:**
 - Category 1*
 - Category 2**
 - Category 3***
- Creek Crossing (New)
- Creek Crossing (Upgrade Required)
- Local Government Area

^ACategory 1: Minimal work required. This would include removal of surface obstacles and/or minor upgrades to existing tracks (i.e. resurfacing, widening etc). Some imported sand and gravel may be required.

^{**}Category 2: Earth works required. Construction of tracks through flat or undulating timbered/rocky areas where existing tracks do not exist. These can range from tracks required over flat plains country, or involve the formation of tracks after cut and fill, rock removal and/or levelling. Newly constructed Category 2 access tracks would typically be topped with approved gravel. Access tracks would be appropriately compacted and graded and included drainage in the direction of the cross fall to ensure tracks could be maintained and erosion impacts from run off minimised.

^{***}Category 3: Earth works required in wet or swampy areas. Typically construction would require excavation of unstable material, drainage works and the import of rock material. This rock would be placed upon a geotextile material to provide a stable surface to facilitate the movement of required construction plant and equipment.



Symbols and lines used in this figure are indicative and are not intended to reflect actual size of represented features.
Symbols and lines have been enhanced to aid visibility.

Source: Aerial Imagery from TransGrid 2009. ^A TransGrid 2010
^A Fairfull and Witheridge, 2003
Commonwealth of Australia (Geoscience Australia) 2010

Drawn: AO/SB Approved: WM/TH Date: 21/02/2011

Job No.: 43177662 File No.: 43177662.140.mxd

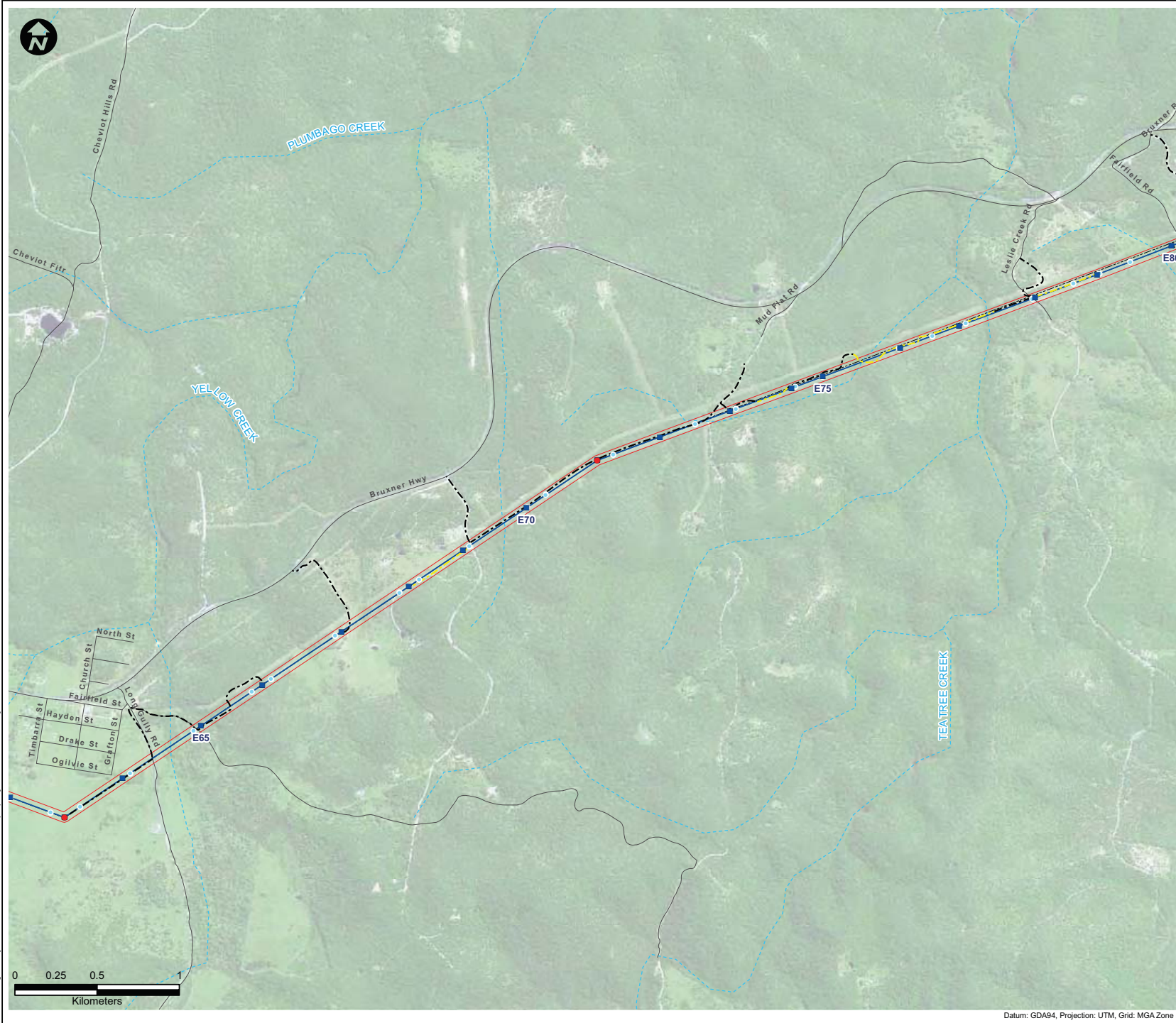
Client
TransGrid

Project
FAR NORTH NSW
(DUMARESQ - LISMORE
330kV TRANSMISSION LINE)
PROJECT

Title
330kV TRANSMISSION LINE
ALIGNMENT AND ACCESS TRACKS
AERIAL

Figure: 2-1s

URS



LEGEND:

- Existing 96L 132kV Structure Locations^A
- Existing Transmission Lines^A
- Proposed 330kV Angle Positions (Indicative)^A
- Proposed 330kV Structure Locations (Indicative)^A
- Proposed 330kV Centreline^A
- Proposed 330kV Easement^A
- Substation/Switching Station
- Roads

Waterways:

- Class 1: Permanent Flow
- Class 2: Permanent / Intermittent Flow
- Class 3: Intermittent Flow

Access Tracks:

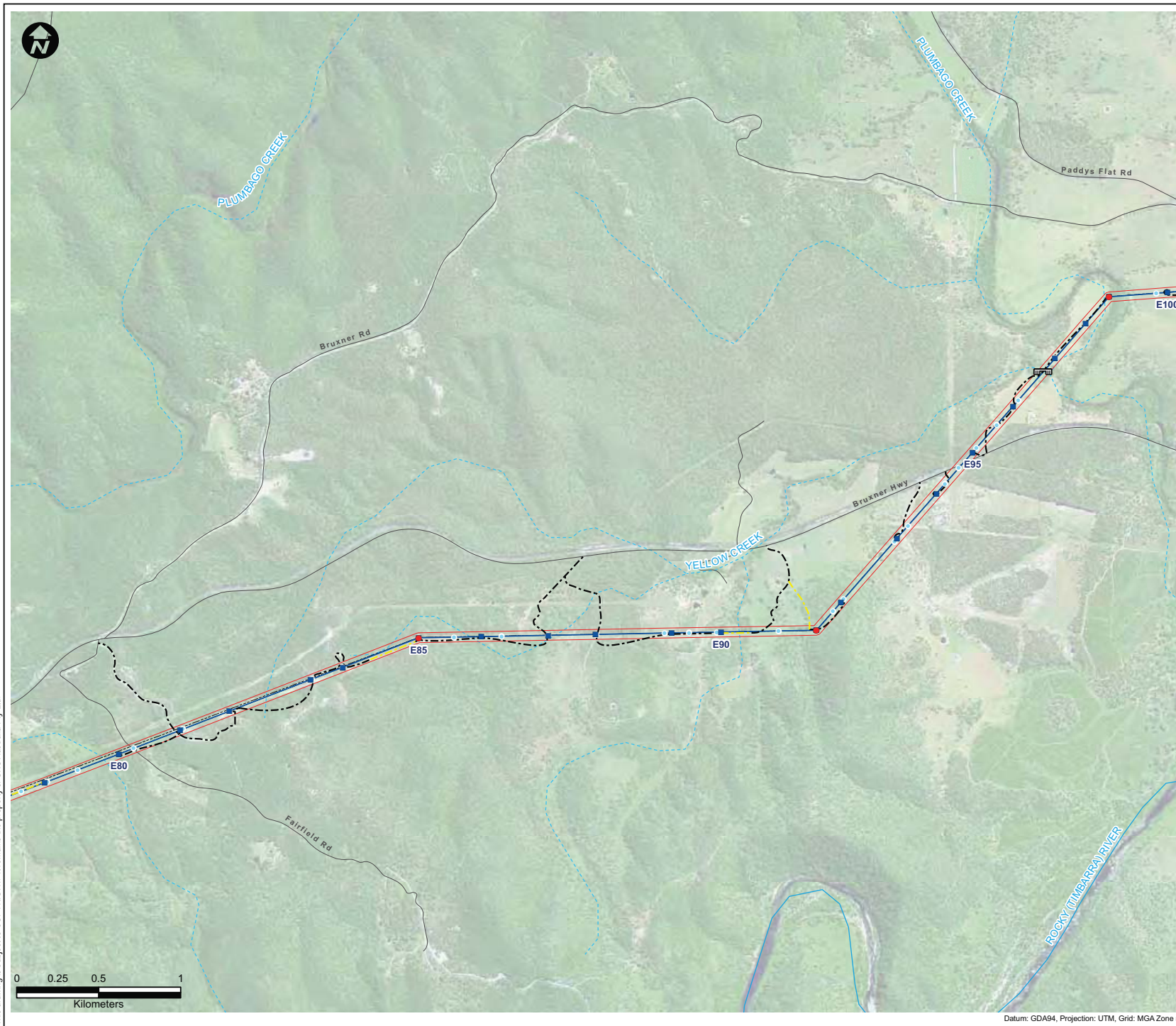
- Category 1*
- Category 2**
- Category 3***
- Creek Crossing (New)
- Creek Crossing (Upgrade Required)
- Local Government Area

^ACategory 1: Minimal work required. This would include removal of surface obstacles and/or minor upgrades to existing tracks (i.e. resurfacing, widening etc). Some imported sand and gravel may be required.
^{**}Category 2: Earth works required. Construction of tracks through flat or undulating timbered/rocky areas where existing tracks do not exist. These can range from tracks required over flat plains country, or involve the formation of tracks after cut and fill, rock removal and/or levelling. Newly constructed Category 2 access tracks would typically be topped with approved gravel. Access tracks would be appropriately compacted and graded and included drainage in the direction of the cross fall to ensure tracks could be maintained and erosion impacts from run off minimised.
^{***}Category 3: Earth works required in wet or swampy areas. Typically construction would require excavation of unstable material, drainage works and the import of rock material. This rock would be placed upon a geotextile material to provide a stable surface to facilitate the movement of required construction plant and equipment.

Symbols and lines used in this figure are indicative and are not intended to reflect actual size of represented features.
Symbols and lines have been enhanced to aid visibility.
Source: Aerial Imagery from TransGrid 2009. ^A TransGrid 2010
^{*} Fairfull and Witheridge, 2003
Commonwealth of Australia (Geoscience Australia) 2010

Drawn: AO/SB	Approved: VM/TH	Date: 21/02/2011
Job No.: 43177662	File No.: 43177662.140.mxd	
Client TransGrid		
Project FAR NORTH NSW (DUMARESQ - LISMORE 330kV TRANSMISSION LINE) PROJECT		
Title 330kV TRANSMISSION LINE ALIGNMENT AND ACCESS TRACKS AERIAL		
Figure: 2-1t		

Datum: GDA94, Projection: UTM, Grid: MGA Zone 56



LEGEND:

- Existing 96L 132kV Structure Locations^A
- Existing Transmission Lines^A
- Proposed 330kV Angle Positions (Indicative)^A
- Proposed 330kV Structure Locations (Indicative)^A
- Proposed 330kV Centreline^A
- Proposed 330kV Easement^A
- Substation/Switching Station
- Roads

Waterways:

- Class 1: Permanent Flow
- Class 2: Permanent / Intermittent Flow
- Class 3: Intermittent Flow

Access Tracks:

- Category 1*
- Category 2**
- Category 3***
- Creek Crossing (New)
- Creek Crossing (Upgrade Required)
- Local Government Area

^{*}Category 1: Minimal work required. This would include removal of surface obstacles and/or minor upgrades to existing tracks (i.e. resurfacing, widening etc). Some imported sand and gravel may be required.
^{**}Category 2: Earth works required. Construction of tracks through flat or undulating timbered/rocky areas where existing tracks do not exist. These can range from tracks required over flat plains country, or involve the formation of tracks after cut and fill, rock removal and/or levelling. Newly constructed Category 2 access tracks would typically be topped with approved gravel. Access tracks would be appropriately compacted and graded and included drainage in the direction of the cross fall to ensure tracks could be maintained and erosion impacts from run off minimised.
^{***}Category 3: Earth works required in wet or swampy areas. Typically construction would require excavation of unstable material, drainage works and the import of rock material. This rock would be placed upon a geotextile material to provide a stable surface to facilitate the movement of required construction plant and equipment.

Symbols and lines used in this figure are indicative and are not intended to reflect actual size of represented features.
 Symbols and lines have been enhanced to aid visibility.
 Source: Aerial Imagery from TransGrid 2009. ^A TransGrid 2010
^{*} Fairfull and Witheridge, 2003
 Commonwealth of Australia (Geoscience Australia) 2010

Drawn: AO/SB	Approved: WM/TH	Date: 21/02/2011
Job No.: 43177662	File No.: 43177662.140.mxd	
Client TransGrid		
Project FAR NORTH NSW (DUMARESQ - LISMORE 330kV TRANSMISSION LINE) PROJECT		
Title 330kV TRANSMISSION LINE ALIGNMENT AND ACCESS TRACKS AERIAL		
Figure: 2-1u		