

Appendix A Streamflow Data

Department of Water and Energy

HYPLOT V132 Output 06/10/2009

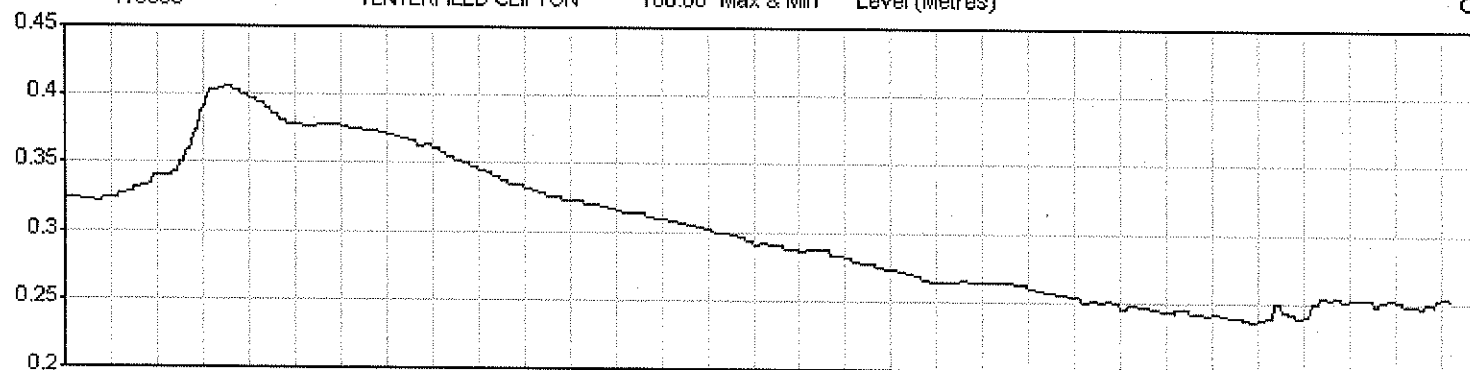
Period 31 Day Plot Start 00:00_06/09/2009

2009

Interval 1 Hour Plot End 00:00_07/10/2009

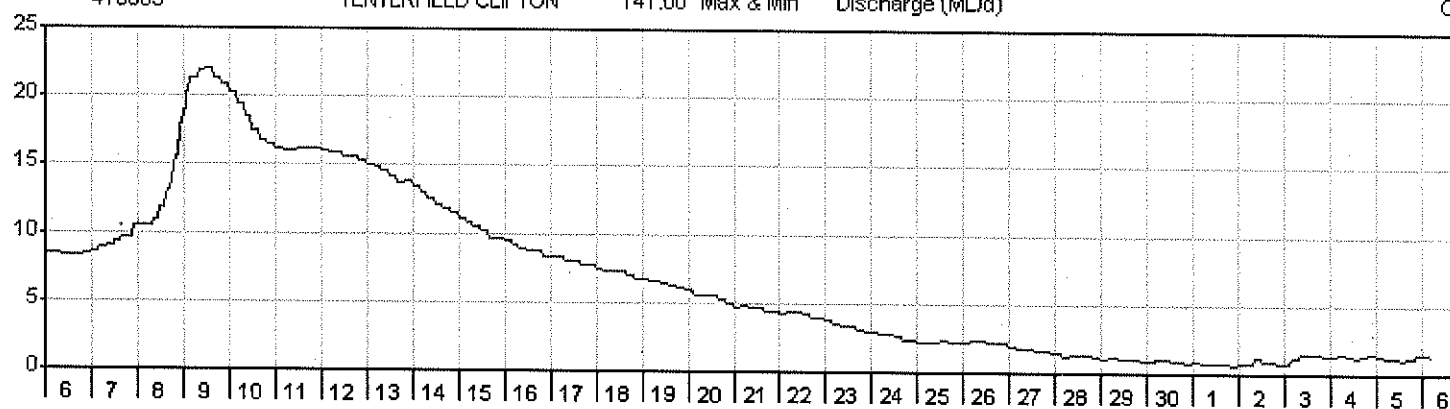
— 416003 TENTERFIELD CLIFTON 100.00 Max & Min Level (Metres)

CP



— 416003 TENTERFIELD CLIFTON 141.00 Max & Min Discharge (ML/d)

CP



Department of Water and Energy

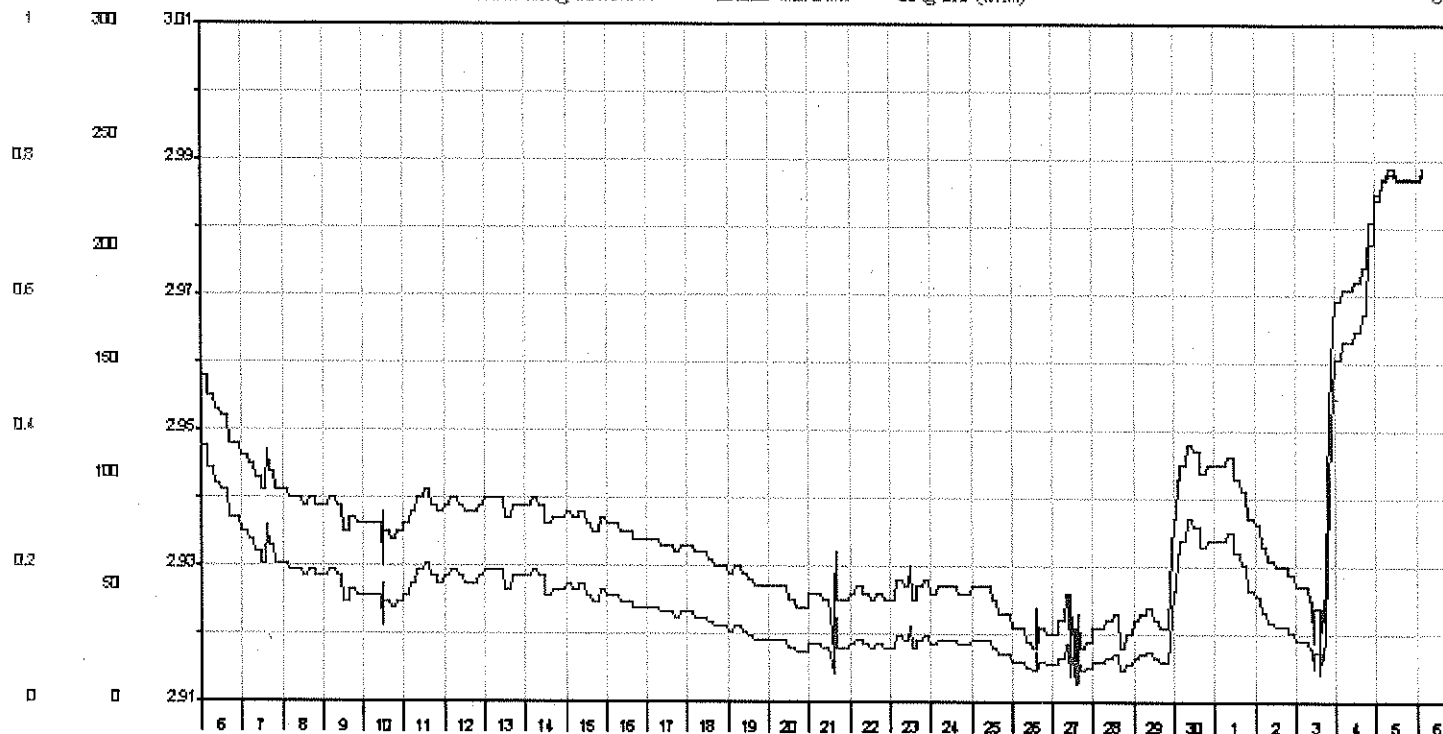
HYPLOT V132 Output 06/10/2009

Period 31 Day PlotStart 0000_05/09/2009

2109

Interval 1 Hour PlotEnd 0000_07/10/2009

— 416007	DUMARESQ @ BONSHAW	100.00 Max & Min	Level (Metres)	CP
— 416007	DUMARESQ @ BONSHAW	141.00 Max & Min	Discharge (ML/d)	CP
— 416007	DUMARESQ @ BONSHAW	2010.00 Max & Min	EC @ 25C (uS/cm)	CP



Department of Water and Energy

HYPLOT V132 Output 06/10/2009

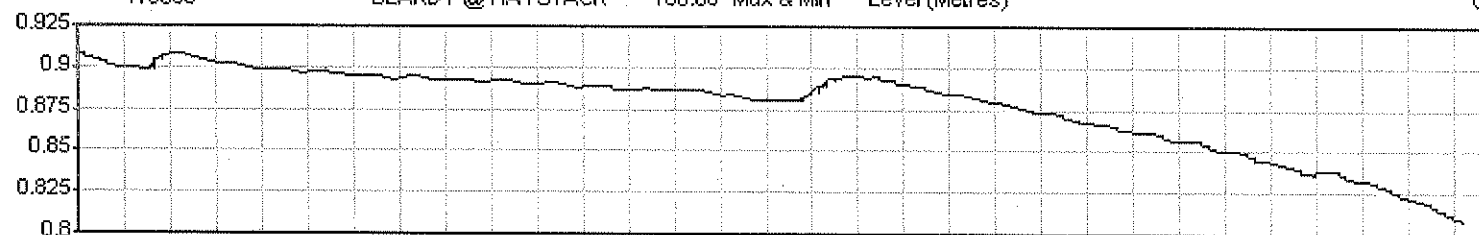
Period 31 Day Plot Start 00:00_06/09/2009

2009

Interval 1 Hour Plot End 00:00_07/10/2009

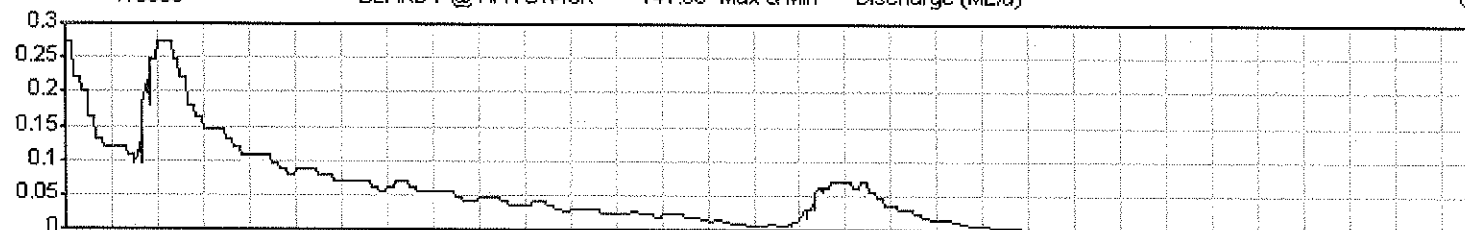
— 416008 BEARDY @ HAYSTACK 100.00 Max & Min Level (Metres)

CP



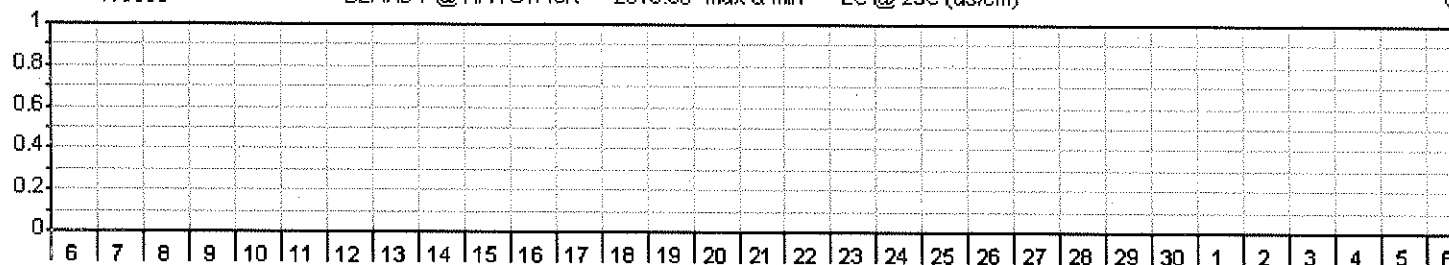
— 416008 BEARDY @ HAYSTACK 141.00 Max & Min Discharge (ML/d)

CP



— 416008 BEARDY @ HAYSTACK 2010.00 Max & Min EC @ 25C (us/cm)

CP



Department of Water and Energy

HYPLOT V132 Output 06/10/2009

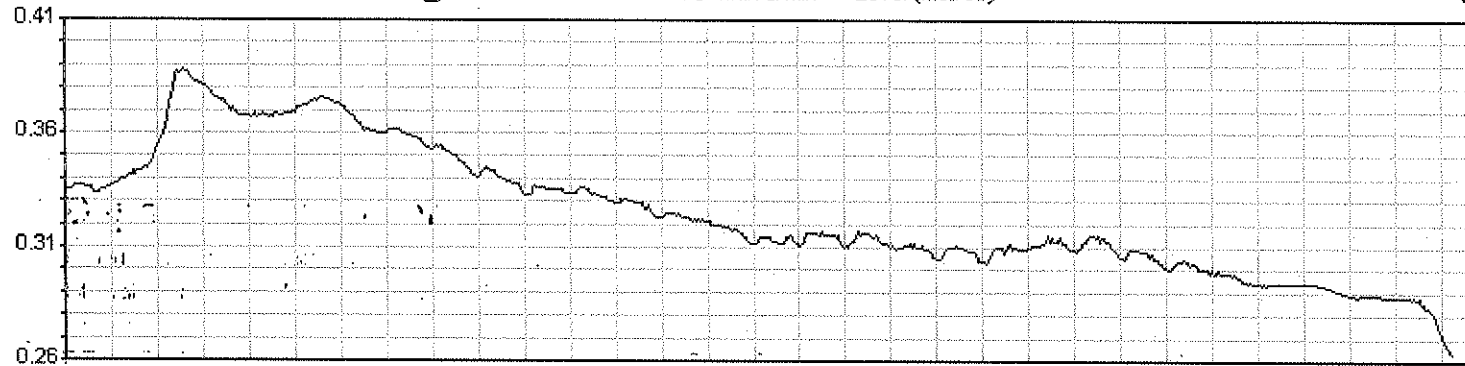
Period 31 Day Plot Start 00:00_06/09/2009

2009

Interval 1 Hour Plot End 00:00_07/10/2009

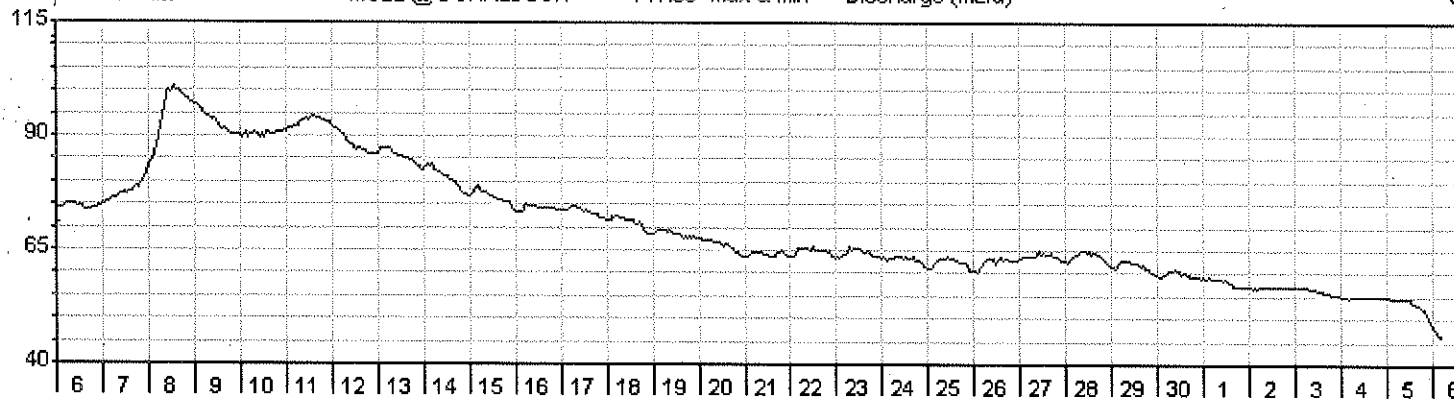
— 416032 MOLE @ DONALDSON 100.00 Max & Min Level (Metres)

CP



— 416032 MOLE @ DONALDSON 141.00 Max & Min Discharge (ML/d)

CP



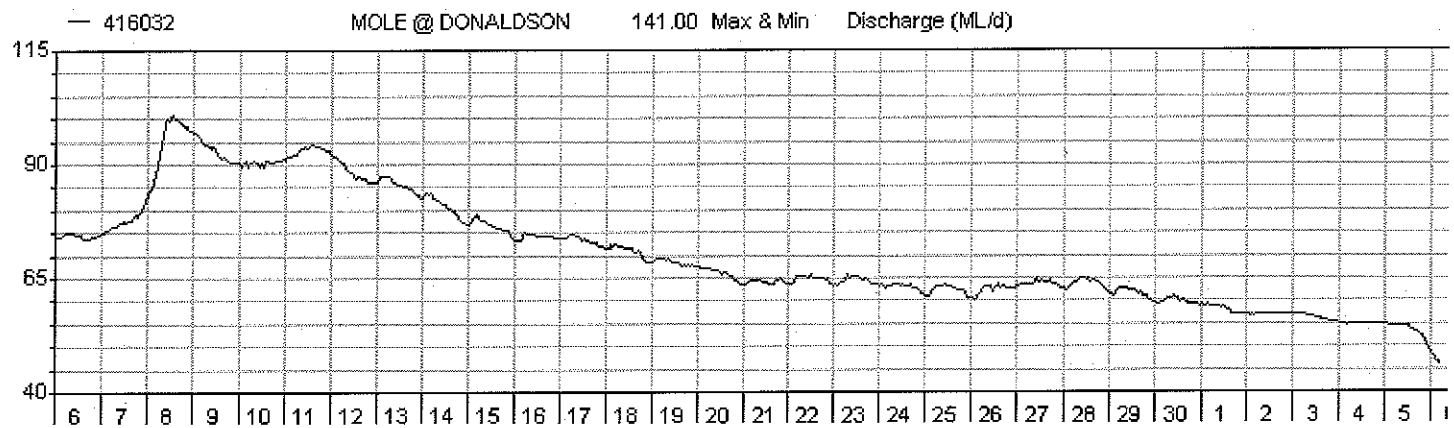
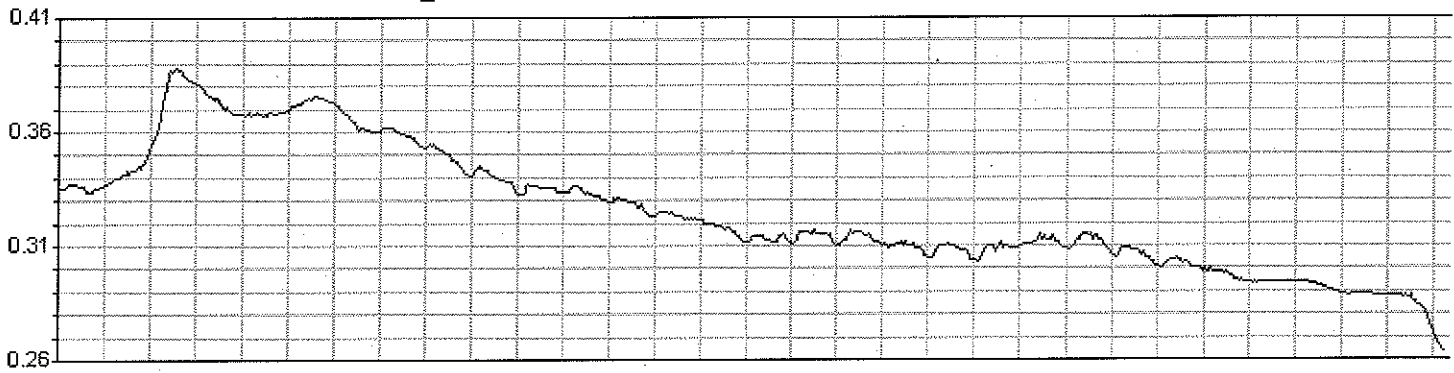
Department of Water and Energy

HYPLOT V132 Output 06/10/21

Period 31 Day Plot Start 00:00_06/09/2009

Interval 1 Hour Plot End 00:00_07/10/2009

— 416032 MOLE @ DONALDSON 100.00 Max & Min Level (Metres)



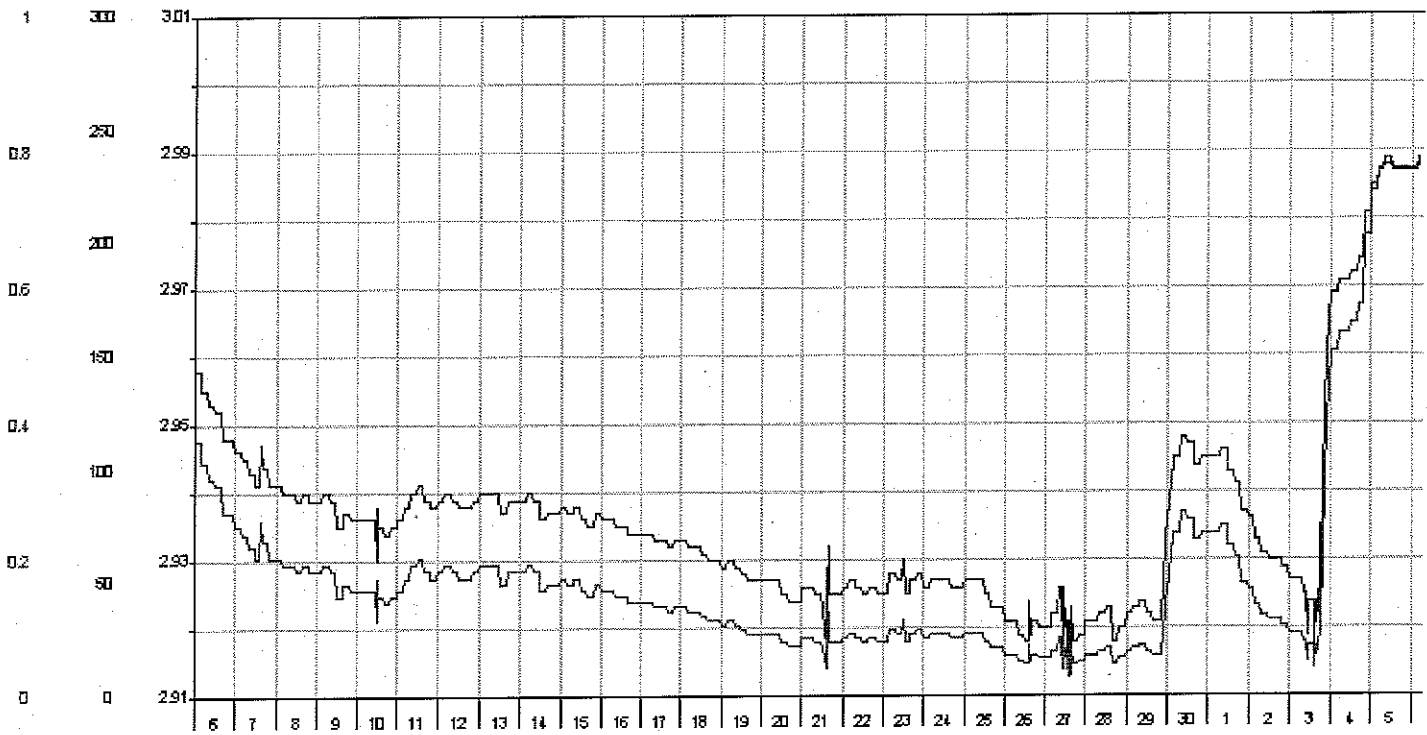
Department of Water and Energy

HYPLOT V132 Output 06/10/21

Period 31 Day Plot Start 0000 06/09/2009

Interval 1 Hour Plot End 0000 07/10/2009

— 416007	DUMARESQ @ BONSHAW	10000 Max & Min	Level (Metres)
— 416007	DUMARESQ @ BONSHAW	14100 Max & Min	Discharge (ML/d)
— 416007	DUMARESQ @ BONSHAW	201000 Max & Min	EC @ 25C (µS/cm)





New South Wales Government

NSW Water Information

Home Rivers Daily river reports Border Rivers

Daily river reports: Border Rivers

- [River report](#)
- [Latest readings](#)
- [Water quality \(electrical conductivity and temperature\)](#)
- [Storage information](#)

Data reflect the mean values over the 24 hour period finishing at 06:00 Australian Eastern Standard Time on the date shown

River report

These data values are taken from the recording nearest to 6am.

	Thursday		Wednesday		Tuesday		Monday		Sunday		Saturday		Friday	
	01-Oct-2009		30-Sep-2009		29-Sep-2009		28-Sep-2009		27-Sep-2009		26-Sep-2009		25-Sep-2009	
	Level (m)	Flow (ML/day)	Level (m)	Flow (ML/day)	Level (m)	Flow (ML/day)	Level (m)	Flow (ML/day)	Level (m)	Flow (ML/day)	Level (m)	Flow (ML/day)	Level (m)	Flow (ML/day)
SEVERN RIVER AT STRATHBOGIE (416039)	1.02	23	1.02	22	1.02	23	1.02	23	1.02	23	1.02	24	1.03	28
MACINTYRE RIVER AT GOONDIWINDI WEIR (416201B)	1.34	4	1.27	0	1.28	0	1.29	1	1.29	1	1.30	2	1.30	2
BARWON RIVER AT MUNGINDI (416001)	3.08	0	3.09	0	3.10	0	3.11	0	3.12	1	3.12	2	3.13	5
SEVERN RIVER AT FLADBURY (416022)	0.25	16	0.27	20	0.27	22	0.29	27	0.30	29	0.29	27	0.29	27
SEVERN RIVER AT DUCCA MARRIN (416067)	0.88	135	1.02	281	0.66	20	0.66	20	0.66	20	0.67	23	0.73	42
FRAZERS CREEK AT GLENORCHY (416069)	0.79	0	0.79	0	0.79	0	0.79	0	0.79	0	0.79	0	0.79	0
FRAZERS CREEK AT WESTHOLME (ASHFORD) (416021)	0.20	0	0.20	0	0.20	0	0.21	0	0.21	0	0.21	0	0.21	0
SEVERN RIVER AT ASHFORD (416006)	0.59	200	0.25	10	0.27	13	0.31	22	0.34	31	0.34	32	0.35	33
MACINTYRE RIVER AT WYOMING (416063)	0.35	-	-0.36	-	-0.36	-	-0.36	-	-0.36	-	-0.37	-	-0.37	-
PARADISE CREEK AT PARADISE STATION (416061)	0.08	-	-0.09	-	-0.09	-	-0.09	-	-0.10	-	-0.10	-	-0.12	-
MACINTYRE AT LITTLE VALLEY (416056)	0.04	-	-0.05	-	-0.06	-	-0.06	-	-0.06	-	-0.06	-	-0.06	-
KINGS CREEK AT GRED (416059)	-	-	-	-	-	-	-	-	-	-	-	-	-	-
	0.12	-	0.13	-	0.12	-	0.12	-	0.12	-	0.12	-	0.12	-

KINGS CREEK AT NEWSTEAD NORTH (416062)	0.29	-0.29	-0.29	-0.29	-0.29	-0.29	-0.29	-0.29	-
MACINTYRE RIVER AT ELSMORE BRIDGE (416057)	0.01	-0.03	-0.04	-0.04	-0.03	-0.04	-0.05	-	
MACINTYRE RIVER AT RIVERSTONE (416066)	0.39	-0.40	-0.40	-0.40	-0.42	-0.44	-0.42	-	
MIDDLE CREEK AT STANNIFER (416064)	0.59	-0.59	-0.59	-0.58	-0.58	-0.59	-0.59	-	
MIDDLE CREEK AT FERNDALE (416055)	0.31	-0.31	-0.31	-0.31	-0.31	-0.31	-0.31	-	
MACINTYRE RIVER AT INVERELL (MIDDLE CREEK) (416016)	0.46	0.46	0.46	0.46	0.46	0.47	1.048	1	
MACINTYRE RIVER AT TINTOT (416068)	0.46	7.046	7.046	7.046	7.046	7.046	7.046	6	
MACINTYRE RIVER AT WALLANGRA (416010)	-	-	-0.48	7.048	7.048	7.048	7.049	7	
MACINTYRE RIVER AT RIDGELANDS (416031)	0.43	23.045	34.047	52.048	65.049	68.047	56.049	70	
MACINTYRE RIVER AT YETMAN BRIDGE (416058)	0.45	33.044	31.045	33.045	35.046	40.048	48.049	51	
MACINTYRE RIVER AT HOLDFAST (YELARBON CROSSING) (416012)	0.44	19.044	19.044	22.045	29.045	36.045	38.045	31	
OTTLEYS CREEK AT COOLATAI (416020)	0.31	1.031	2.032	2.032	2.032	2.032	2.032	2	
DEEPWATER RIVER AT BOLIVIA (416023)	0.32	8.032	9.032	8.032	8.033	10.033	10.032	9	
TENTERFIELD CREEK AT CLIFTON (416003)	0.24	1.025	1.025	1.025	1.026	2.026	2.026	2	
MOLE RIVER AT DONALDSON (416032)	0.30	59.030	61.031	63.031	64.031	63.031	63.031	63	
DUMARESQ RIVER AT ROSENEATH (416011)	0.65	33.072	106.074	146.073	128.063	20.063	21.064	26	
BEARDY RIVER AT HAYSTACK	0.85	0.086	0.086	0.087	0.087	0.088	0.088	0	

(416008)														
DUMARESQ RIVER U/S BONSHAW WEIR (416007)	2.94	72	2.94	72	2.92	21	2.92	18	2.92	19	2.92	18	2.93	27
DUMARESQ RIVER AT GLENARBON WEIR (416040)	0.26	3	0.27	4	0.28	5	0.29	6	0.30	6	0.30	7	0.30	7
MACINTYRE RIVER AT BOGGABILLA (416002)	0.48	53	0.39	21	0.41	25	0.41	27	0.42	27	0.43	31	0.43	31
MACINTYRE RIVER AT TERREWAH (416047)	0.78	0	0.78	0	0.80	0	0.82	0	0.84	0	0.87	1	0.91	3
BOOMI RIVER AT BOOMI WEIR OFFTAKE (416037)	0.21	2	0.21	2	0.21	2	0.21	2	0.21	2	0.21	2	0.21	2
MACINTYRE RIVER U/S BOOMI WEIR (416043)	0.49	7	0.49	11	0.50	16	0.50	23	0.51	31	0.52	36	0.51	35
MACINTYRE RIVER AT KANOWNA (416048)	0.38	1	0.39	1	0.40	1	0.41	1	0.42	1	0.43	2	0.44	2
GIL GIL CREEK AT BOOLATAROO (416054)	0.24	0	0.24	0	0.23	0	0.22	0	0.21	0	0.20	0	0.19	0
GIL GIL CREEK AT WEEMELAH (416027)	0.35	17	0.35	21	0.11	0	0.12	0	0.13	0	0.13	0	0.14	0
GIL GIL CREEK AT GALLOWAY (416052)	0.16	0	0.16	0	0.17	0	0.18	0	0.19	0	0.20	0	0.20	0
BARWON RIVER U/S PRESBURY WEIR (416050)	0.20	1	0.20	2	0.21	3	0.21	4	0.21	5	0.21	5	0.21	6

[Skip to top]

Latest readings

These data values are taken from the recording nearest to 6am.

MOLE RIVER AT DONALDSON (416032)		
Level (m)	0.30	Thu 01/Oct/2009 06:00:00
Flow (ML/day)	59	Thu 01/Oct/2009 06:00:00
DUMARESQ RIVER AT ROSENEATH (416011)		
Level (m)	0.65	Thu 01/Oct/2009 06:30:00
Flow (ML/day)	33	Thu 01/Oct/2009 06:30:00
BEARDY RIVER AT HAYSTACK (416008)		
Level (m)	0.85	Thu 01/Oct/2009 06:30:00
Flow (ML/day)	0	Thu 01/Oct/2009 06:30:00
DUMARESQ RIVER U/S BONSHAW WEIR (416007)		
Level (m)	2.94	Thu 01/Oct/2009 06:30:00
Flow (ML/day)	72	Thu 01/Oct/2009 06:30:00
DUMARESQ RIVER AT GLENARBON WEIR (416040)		
Level (m)	0.26	Thu 01/Oct/2009 06:30:00
Flow (ML/day)	3	Thu 01/Oct/2009 06:30:00
Water Temp (DegC)	18	Thu 01/Oct/2009 00:00:00
EC 25DegC (uS/cm)	206	Thu 01/Oct/2009 00:00:00

SEVERN RIVER AT ASHFORD (416006)		
Level (m)	0.59	Thu 01/Oct/2009 06:30:00
Flow (ML/day)	200	Thu 01/Oct/2009 06:30:00
MACINTYRE RIVER AT WALLANGRA (416010)		
Level (m)	0.48	Tue 29/Sep/2009 06:30:00
Flow (ML/day)	7	Tue 29/Sep/2009 06:30:00
MACINTYRE RIVER AT HOLDFAST (YELARBON CROSSING) (416012)		
Level (m)	0.44	Thu 01/Oct/2009 06:30:00
Flow (ML/day)	19	Thu 01/Oct/2009 06:30:00
Water Temp (DegC)	19	Thu 01/Oct/2009 02:00:00
EC 25DegC (uS/cm)	330	Thu 01/Oct/2009 02:00:00
MACINTYRE RIVER AT GOONDIWINDI WEIR (416201B)		
Level (m)	1.34	Thu 01/Oct/2009 03:00:00
Flow (ML/day)	4	Thu 01/Oct/2009 03:00:00
EC 25DegC (uS/cm)	246	Mon 28/Apr/2008 04:00:00
MACINTYRE RIVER AT TERREWAH (416047)		
Level (m)	0.78	Thu 01/Oct/2009 06:30:00
Flow (ML/day)	0	Thu 01/Oct/2009 06:30:00
BOOMI RIVER AT BOOMI WEIR OFFTAKE (416037)		
Level (m)	-0.21	Thu 01/Oct/2009 06:30:00
Flow (ML/day)	2	Thu 01/Oct/2009 06:30:00
MACINTYRE RIVER AT KANOWNA (416048)		
Level (m)	0.38	Thu 01/Oct/2009 06:30:00
Flow (ML/day)	1	Thu 01/Oct/2009 06:30:00
BARWON RIVER AT MUNGINDI (416001)		
Level (m)	3.08	Thu 01/Oct/2009 05:45:00
Flow (ML/day)	0	Thu 01/Oct/2009 05:45:00
Water Temp (DegC)	16	Wed 09/Sep/2009 16:00:00
EC 25DegC (uS/cm)	239	Wed 09/Sep/2009 16:00:00
PIKE CREEK AT GLENLYON DAM - STORAGE GAUGE (416315A)		
Elevation (Metres)	395.13	Thu 01/Oct/2009 09:00:00
Volume (ML)	58,614	Thu 01/Oct/2009 09:00:00
MACINTYRE BROOK AT COOLMUNDA DAM - STORAGE GAUGE (416409A)		
SEVERN RIVER AT PINDARI DAM-STORAGE GAUGE (416030)		
Elevation (Metres)	494.17	Thu 01/Oct/2009 03:30:00
Volume (ML)	133,820	Thu 01/Oct/2009 03:30:00
MACINTYRE RIVER AT BOGGABILLA WEIR - STORAGE GAUGE (416065)		
Elevation (Metres)	211.36	Thu 01/Oct/2009 09:00:00
Volume (ML)	833	Thu 01/Oct/2009 09:00:00

[Skip to top](#)

Water quality (electrical conductivity and temperature)

These data values are taken from the recording nearest to 6am.

Thursday	Wednesday	Tuesday	Monday	Sunday	Saturday	Friday
01-Oct-2009	30-Sep-2009	29-Sep-2009	28-Sep-2009	27-Sep-2009	26-Sep-2009	25-Sep-2009
PIKE CREEK AT GLENLYON DAM - STORAGE GAUGE (416315A)						
SEVERN RIVER AT PINDARI DAM-STORAGE GAUGE (416030)						
MACINTYRE BROOK AT COOLMUNDA DAM - STORAGE GAUGE (416409A)						
MACINTYRE RIVER AT BOGGABILLA WEIR - STORAGE GAUGE (416065)						

[Skip to top](#)

Storage information

These data values are taken from the recording nearest to 9am.

	Thursday	Wednesday	Tuesday	Monday	Sunday	Saturday	Friday
	01-Oct-2009	30-Sep-2009	29-Sep-2009	28-Sep-2009	27-Sep-2009	26-Sep-2009	25-Sep-2009
PIKE CREEK AT GLENLYON DAM - STORAGE GAUGE (416315A)							
Elevation (Metres)	395.13	395.14	395.14	395.17	395.19	395.22	395.22
Volume (ML)	58,614	58,679	58,679	58,876	59,007	59,205	59,205

Net Reservoir Inflow 24hours (Megalitres)	-65.5	0.0	-40.8	18.6	-47.5	0.0	0.0
Storage Releases 24 hour Total (Megalitres)	0.0	0.0	156.0	150.0	150.0	0.0	0.0
Storage Releases Valve 24 hours Total (Megalitres)	0.0	0.0	156.0	150.0	150.0	0.0	0.0
Storage Releases Hydro 24 hour Total (Megalitres)	0.0	0.0	0.0	0.0	0.0	0.0	0.0
Rain (mm)	0.0	0.0	0.0	0.0	0.0	0.0	0.0
SEVERN RIVER AT PINDARI DAM-STORAGE GAUGE (416030)							
Percent Full (%)	42.9	42.9	43.0	43.0	43.0	43.0	43.0
Elevation (Metres)	494.17	494.19	494.22	494.23	494.23	494.24	494.24
Volume (ML)	133,820	133,943	134,127	134,188	134,188	134,250	134,250
Storage Releases 24 hour Total (Megalitres)	143.0	286.0	20.0	25.0	25.0	25.0	41.0
Storage Releases Valve 24 hours Total (Megalitres)	143.0	286.0	20.0	25.0	25.0	25.0	41.0
Storage Releases Hydro 24 hour Total (Megalitres)	0.0	0.0	0.0	0.0	0.0	0.0	0.0
Rain (mm)	0.0	0.0	0.0	0.0	0.0	0.0	0.0
MACINTYRE RIVER AT BOGGABILLA WEIR - STORAGE GAUGE (416065)							
Elevation (Metres)	211.36	211.66	211.65	211.65	211.65	211.64	211.62
Volume (ML)	833	1,024	1,022	1,020	1,017	1,010	1,000
Storage Releases 24 hour Total (Megalitres)	40.0	0.0	0.0	0.0	0.0	0.0	0.0

[Skip to top]



New South Wales Government

NSW Water Information

Home Rivers Daily river reports Border Rivers

Daily river reports: Border Rivers

- [River report](#)
- [Latest readings](#)
- [Water quality \(electrical conductivity and temperature\)](#)
- [Storage information](#)

Data reflect the mean values over the 24 hour period finishing at 06:00 Australian Eastern Standard Time on the date shown

River report

These data values are taken from the recording nearest to 6am.

	Thursday		Wednesday		Tuesday		Monday		Sunday		Saturday		Friday	
	01-Oct-2009		30-Sep-2009		29-Sep-2009		28-Sep-2009		27-Sep-2009		26-Sep-2009		25-Sep-2009	
	Level (m)	Flow (ML/day)	Level (m)	Flow (ML/day)	Level (m)	Flow (ML/day)	Level (m)	Flow (ML/day)	Level (m)	Flow (ML/day)	Level (m)	Flow (ML/day)	Level (m)	Flow (ML/day)
SEVERN RIVER AT STRATHBOGIE (416039)	1.02	23	1.02	22	1.02	23	1.02	23	1.02	23	1.02	24	1.03	28
MACINTYRE RIVER AT GOONDIWINDI WEIR (416201B)	1.34	4	1.27	0	1.28	0	1.29	1	1.29	1	1.30	2	1.30	2
BARWON RIVER AT MUNGINDI (416001)	3.08	0	3.09	0	3.10	0	3.11	0	3.12	1	3.12	2	3.13	5
SEVERN RIVER AT FLADBURY (416022)	0.25	16	0.27	20	0.27	22	0.29	27	0.30	29	0.29	27	0.29	27
SEVERN RIVER AT DUCCA MARRIN (416067)	0.88	135	1.02	281	0.66	20	0.66	20	0.66	20	0.67	23	0.73	42
FRAZERS CREEK AT GLENORCHY (416069)	0.79	0	0.79	0	0.79	0	0.79	0	0.79	0	0.79	0	0.79	0
FRAZERS CREEK AT WESTHOLME (ASHFORD) (416021)	0.20	0	0.20	0	0.20	0	0.21	0	0.21	0	0.21	0	0.21	0
SEVERN RIVER AT ASHFORD (416006)	0.59	200	0.25	10	0.27	13	0.31	22	0.34	31	0.34	32	0.35	33
MACINTYRE RIVER AT WYOMING (416063)	0.35	-	-0.36	-	-0.36	-	-0.36	-	-0.36	-	-0.37	-	-0.37	-
PARADISE CREEK AT PARADISE STATION (416061)	0.08	-	-0.09	-	-0.09	-	-0.09	-	-0.10	-	-0.10	-	-0.12	-
MACINTYRE AT LITTLE VALLEY (416056)	0.04	-	-0.05	-	-0.06	-	-0.06	-	-0.06	-	-0.06	-	-0.06	-
KINGS CREEK AT GRED (416059)	0.12	-	-0.13	-	-0.12	-	-0.12	-	-0.12	-	-0.12	-	-0.12	-

KINGS CREEK AT NEWSTEAD NORTH (416062)	0.29	-0.29	-0.29	-0.29	-0.29	-0.29	-0.29	-
MACINTYRE RIVER AT ELSMORE BRIDGE (416057)	0.01	-0.03	-0.04	-0.04	-0.03	-0.04	-0.05	-
MACINTYRE RIVER AT RIVERSTONE (416066)	0.39	-0.40	-0.40	-0.40	-0.42	-0.44	-0.42	-
MIDDLE CREEK AT STANNIFER (416064)	0.59	-0.59	-0.59	-0.58	-0.58	-0.59	-0.59	-
MIDDLE CREEK AT FERNDAL (416055)	0.31	-0.31	-0.31	-0.31	-0.31	-0.31	-0.31	-
MACINTYRE RIVER AT INVERELL (416016)	0.46	0.46	0.46	0.46	0.46	0.47	1.048	1
MACINTYRE RIVER AT TINTOT (416068)	0.46	7.046	7.046	7.046	7.046	7.046	7.046	6
MACINTYRE RIVER AT WALLANGRA (416010)	-	-	-0.48	7.048	7.048	7.048	7.049	7
MACINTYRE RIVER AT RIDGELANDS (416031)	0.43	23.045	34.047	52.048	65.049	68.047	56.049	70
MACINTYRE RIVER AT YETMAN BRIDGE (416058)	0.45	33.044	31.045	33.045	35.046	40.048	48.049	51
MACINTYRE RIVER AT HOLDFAST (YELARBON CROSSING) (416012)	0.44	19.044	19.044	22.045	29.045	36.045	38.045	31
OTTLEYS CREEK AT COOLATAI (416020)	0.31	1.031	2.032	2.032	2.032	2.032	2.032	2
DEEPWATER RIVER AT BOLIVIA (416023)	0.32	8.032	9.032	8.032	8.033	10.033	10.032	9
TENTERFIELD CREEK AT CLIFTON (416003)	0.24	1.025	1.025	1.025	1.026	2.026	2.026	2
MOLE RIVER AT DONALDSON (416032)	0.30	59.030	61.031	63.031	64.031	63.031	63.031	63
DUMARESQ RIVER AT ROSENEATH (416011)	0.65	33.072	106.074	146.073	128.063	20.063	21.064	26
BEARDY RIVER AT HAYSTACK	0.85	0.086	0.086	0.087	0.087	0.088	0.088	0

(416008)														
DUMARESQ RIVER U/S BONSHAW WEIR (416007)	2.94	72	2.94	72	2.92	21	2.92	18	2.92	19	2.92	18	2.93	27
DUMARESQ RIVER AT GLENARBON WEIR (416040)	0.26	3	0.27	4	0.28	5	0.29	6	0.30	6	0.30	7	0.30	7
MACINTYRE RIVER AT BOGGABILLA (416002)	0.48	53	0.39	21	0.41	25	0.41	27	0.42	27	0.43	31	0.43	31
MACINTYRE RIVER AT TERREWAH (416047)	0.78	0	0.78	0	0.80	0	0.82	0	0.84	0	0.87	1	0.91	3
BOOMI RIVER AT BOOMI WEIR OFFTAKE (416037)	0.21	2	0.21	2	0.21	2	0.21	2	0.21	2	0.21	2	0.21	2
CINTYRE RIVER U/S BOOMI WEIR (416043)	0.49	7	0.49	11	0.50	16	0.50	23	0.51	31	0.52	36	0.51	35
MACINTYRE RIVER AT KANOWNA (416048)	0.38	1	0.39	1	0.40	1	0.41	1	0.42	1	0.43	2	0.44	2
GIL GIL CREEK AT BOOLATAROO (416054)	0.24	0	0.24	0	0.23	0	0.22	0	0.21	0	0.20	0	0.19	0
GIL GIL CREEK AT WEEMELAH (416027)	0.35	17	0.35	21	0.11	0	0.12	0	0.13	0	0.13	0	0.14	0
GIL GIL CREEK AT GALLOWAY (416052)	0.16	0	0.16	0	0.17	0	0.18	0	0.19	0	0.20	0	0.20	0
BARWON RIVER U/S PRESBURY WEIR (416050)	0.20	1	0.20	2	0.21	3	0.21	4	0.21	5	0.21	5	0.21	6

[\[skip to top\]](#)

Latest readings

These data values are taken from the recording nearest to 6am.

MOLE RIVER AT DONALDSON (416032)		
Level (m)	0.30	Thu 01/Oct/2009 06:00:00
Flow (ML/day)	59	Thu 01/Oct/2009 06:00:00
DUMARESQ RIVER AT ROSENEATH (416011)		
Level (m)	0.65	Thu 01/Oct/2009 06:30:00
Flow (ML/day)	33	Thu 01/Oct/2009 06:30:00
BEARDY RIVER AT HAYSTACK (416008)		
Level (m)	0.85	Thu 01/Oct/2009 06:30:00
Flow (ML/day)	0	Thu 01/Oct/2009 06:30:00
DUMARESQ RIVER U/S BONSHAW WEIR (416007)		
Level (m)	2.94	Thu 01/Oct/2009 06:30:00
Flow (ML/day)	72	Thu 01/Oct/2009 06:30:00
DUMARESQ RIVER AT GLENARBON WEIR (416040)		
Level (m)	0.26	Thu 01/Oct/2009 06:30:00
Flow (ML/day)	3	Thu 01/Oct/2009 06:30:00
Water Temp (DegC)	18	Thu 01/Oct/2009 00:00:00
EC 25DegC (uS/cm)	206	Thu 01/Oct/2009 00:00:00

SEVERN RIVER AT ASHFORD (416006)

Level (m)	0.59	Thu 01/Oct/2009 06:30:00
Flow (ML/day)	200	Thu 01/Oct/2009 06:30:00

MACINTYRE RIVER AT WALLANGRA (416010)

Level (m)	0.48	Tue 29/Sep/2009 06:30:00
Flow (ML/day)	7	Tue 29/Sep/2009 06:30:00

MACINTYRE RIVER AT HOLDFAST (YELARBON CROSSING) (416012)

Level (m)	0.44	Thu 01/Oct/2009 06:30:00
Flow (ML/day)	19	Thu 01/Oct/2009 06:30:00
Water Temp (DegC)	19	Thu 01/Oct/2009 02:00:00
EC 25DegC (uS/cm)	330	Thu 01/Oct/2009 02:00:00

MACINTYRE RIVER AT GOONDIWINDI WEIR (416201B)

Level (m)	1.34	Thu 01/Oct/2009 03:00:00
Flow (ML/day)	4	Thu 01/Oct/2009 03:00:00
EC 25DegC (uS/cm)	246	Mon 28/Apr/2008 04:00:00

MACINTYRE RIVER AT TERREWAH (416047)

Level (m)	0.78	Thu 01/Oct/2009 06:30:00
Flow (ML/day)	0	Thu 01/Oct/2009 06:30:00

BOOMI RIVER AT BOOMI WEIR OFFTAKE (416037)

Level (m)	-0.21	Thu 01/Oct/2009 06:30:00
Flow (ML/day)	2	Thu 01/Oct/2009 06:30:00

MACINTYRE RIVER AT KANOWNA (416048)

Level (m)	0.38	Thu 01/Oct/2009 06:30:00
Flow (ML/day)	1	Thu 01/Oct/2009 06:30:00

BARWON RIVER AT MUNGINDI (416001)

Level (m)	3.08	Thu 01/Oct/2009 05:45:00
Flow (ML/day)	0	Thu 01/Oct/2009 05:45:00
Water Temp (DegC)	16	Wed 09/Sep/2009 16:00:00
EC 25DegC (uS/cm)	239	Wed 09/Sep/2009 16:00:00

PIKE CREEK AT GLENLYON DAM - STORAGE GAUGE (416315A)

Elevation (Metres)	395.13	Thu 01/Oct/2009 09:00:00
Volume (ML)	58,614	Thu 01/Oct/2009 09:00:00

MACINTYRE BROOK AT COOLMUNDA DAM - STORAGE GAUGE (416409A)**SEVERN RIVER AT PINDARI DAM-STORAGE GAUGE (416030)**

Elevation (Metres)	494.17	Thu 01/Oct/2009 03:30:00
Volume (ML)	133,820	Thu 01/Oct/2009 03:30:00

MACINTYRE RIVER AT BOGGABILLA WEIR - STORAGE GAUGE (416065)

Elevation (Metres)	211.36	Thu 01/Oct/2009 09:00:00
Volume (ML)	833	Thu 01/Oct/2009 09:00:00

[Skip to top]

Water quality (electrical conductivity and temperature)

These data values are taken from the recording nearest to 6am.

Thursday	Wednesday	Tuesday	Monday	Sunday	Saturday	Friday
01-Oct-2009	30-Sep-2009	29-Sep-2009	28-Sep-2009	27-Sep-2009	26-Sep-2009	25-Sep-2009
PIKE CREEK AT GLENLYON DAM - STORAGE GAUGE (416315A)						
SEVERN RIVER AT PINDARI DAM-STORAGE GAUGE (416030)						
MACINTYRE BROOK AT COOLMUNDA DAM - STORAGE GAUGE (416409A)						
MACINTYRE RIVER AT BOGGABILLA WEIR - STORAGE GAUGE (416065)						

[Skip to top]

Storage information

These data values are taken from the recording nearest to 9am.

	Thursday	Wednesday	Tuesday	Monday	Sunday	Saturday	Friday
	01-Oct-2009	30-Sep-2009	29-Sep-2009	28-Sep-2009	27-Sep-2009	26-Sep-2009	25-Sep-2009
PIKE CREEK AT GLENLYON DAM - STORAGE GAUGE (416315A)							
Elevation (Metres)	395.13	395.14	395.14	395.17	395.19	395.22	395.22
Volume (ML)	58,614	58,679	58,679	58,876	59,007	59,205	59,205

Net Reservoir Inflow 24hours (Megalitres)	-65.5	0.0	-40.8	18.6	-47.5	0.0	0.0
Storage Releases 24 hour Total (Megalitres)	0.0	0.0	156.0	150.0	150.0	0.0	0.0
Storage Releases Valve 24 hours Total (Megalitres)	0.0	0.0	156.0	150.0	150.0	0.0	0.0
Storage Releases Hydro 24 hour Total (Megalitres)	0.0	0.0	0.0	0.0	0.0	0.0	0.0
Rain (mm)	0.0	0.0	0.0	0.0	0.0	0.0	0.0
SEVERN RIVER AT PINDARI DAM-STORAGE GAUGE (416030)							
Percent Full (%)	42.9	42.9	43.0	43.0	43.0	43.0	43.0
Elevation (Metres)	494.17	494.19	494.22	494.23	494.23	494.24	494.24
Volume (ML)	133,820	133,943	134,127	134,188	134,188	134,250	134,250
Storage Releases 24 hour Total (Megalitres)	143.0	286.0	20.0	25.0	25.0	25.0	41.0
Storage Releases Valve 24 hours Total (Megalitres)	143.0	286.0	20.0	25.0	25.0	25.0	41.0
Storage Releases Hydro 24 hour Total (Megalitres)	0.0	0.0	0.0	0.0	0.0	0.0	0.0
Rain (mm)	0.0	0.0	0.0	0.0	0.0	0.0	0.0
MACINTYRE RIVER AT BOGGABILLA WEIR - STORAGE GAUGE (416065)							
Elevation (Metres)	211.36	211.66	211.65	211.65	211.65	211.64	211.62
Volume (ML)	833	1,024	1,022	1,020	1,017	1,010	1,000
Storage Releases 24 hour Total (Megalitres)	40.0	0.0	0.0	0.0	0.0	0.0	0.0

[\[Skip to top\]](#)

Appendix B Surface Water Characterisation

TABLE B-1: Alignment and Access Track intersection of watercourses

Alignment Span (AP) Assessed Access track Category Drainage lines, Creeks and Streams Waterway Classification					Identified Creek Crossings					Description	Figure References
					Existing to be upgraded		New creek crossing to be installed		No. of unaccessed Creek Crossings		
					On easement	Off easement	On easement	Off easement			
Alignment west											
1	2	Category 1,Category 2	l potential drainage line	1 Class 3					1		Figure 2-1a
2	3	Category 2	2 drainage lines	1 Class 3, 1 unclassified	1					1 in-easement creek crossing upgrade identified	Figure 2-1a
3	4	Category 2	Beardy River, 4 potential drainage lines	Class 3, Class 2 - Beardy River		1	2	1			Figure 2-1a
4	5	Category 2	5 potential drainage lines	2 Class 3 identified; a number of potential drainage lines unclassified.		1		2			Figure 2-1b
5	6	Category 2	4 potential drainage lines	no potentail drainage lines classified							Figure 2-1b
6	7	Category 2	4 potential drainage lines	1 Class 3 identified		1	2				Figure 2-1b
7	8	Category 2	3 drainage lines	no potentail drainage lines classified							Figure 2-1b
8	9	Category 2	Black Creek and 3 potential drainage lines	2 Class 3; Black Creek and the other unnamed. Other potential drainage lines unclassified		1	1	1		off easement track traverses Black Creek	Figure 2-1c
9	10	Category 2	2 potential drainage or creeklines + Sandy Creek	1 Class 3 identified. Shown on Topographic maps as Sandy Creek.				1			Figure 2-1c
10	11	Category 2	Gulf Creek	1 Class 3 identified- Gulf Creek	1					on easement crossing of Gulf Creek	
11	12	Category 1,Category 2	Numerous minor drainage lines (6)	3 Class 3 identified	1	1	2				Figure 2-1c/d
12	13	Category 1,Category 2	2 unnamed drainage lines	2 Class 3 identified			1				Figure 2-1d
13	14	Category 1,Category 2	2 drainage lines + Shed Creek	2 Class 3 identified			2				Figure 2-1d/e
14	15	Category 2	3 potential drainage lines + Reedy Creek	1 Class 3 identified- Reedy Creek						Access track to easement parallel to Reedy Creek	Figure 2-1e/f
15	16	Category 2	multiple potential drainage lines (7)	3 Class 3 identified. Other potential drainage lines unclassified					1	Category 2 off easement access track from Reedy Ck Rd traverses Rocky Camp Creek	
16	17	Category 2	Mole River + 2 unnamed potential creeklines	1 Class 2, 1 Class 2- Mole River					1	off easement track over Mole River required	Figure 2-1f
17	18	Category 1,Category 2	2 drainage lines + Orchard Creek	no potentail drainage lines classified							
18	19	Category 2	2 unnamed creeklines/ drainage lines	no potentail drainage lines classified							
19	20	Category 2	3 minor drainage lines (unnamed) + Ravine Creek	1 Class 3 identified	1						Figure 2-1f, 2-1g
20	21	Category 2	2 minor drainage lines (unnamed) + Skillion Creek	2 Class 3 identified							Figure 2-1g
21	22	Category 1,Category 2	2 minor drainage lines (unnamed)	no potentail drainage lines classified						section of Gibraltar Rd to be upgraded	Figure 2-1g
22	23	Category 2	2 minor drainage lines (unnamed)	no potentail drainage lines classified							Figure 2-1h
23	24	Category 2	2 minor drainage lines (unnamed)	no potentail drainage lines classified		1		1			Figure 2-1h
24	25	Category 2	4 drainage lines (unnamed) + Five Mile Creek	2 Class 3 identified							Figure 2-1h, 2-1i
25	26	Category 2,Category 3	4 unnamed creeklines/ drainage lines + Deadman Creek, Eight Mile Creek	3 Class 3 identified. Other potential drainage lines unclassified		1	1	1		b/w W152-153 small section Category 3 off easement	Figure 2-1i, 2-1j
26	27	Category 1,Category 2,Category 3	2 unnamed creeklines. 2 tributaries of Sunnyside Creek. Eight Mile Creek, Swamp Creek, Ten Mile Creek	4 Class 3 identified including Sunnyside Creek	1	1		1			Figure 2-1j/k
27	28	Category 2,Category 3		1 Class 3 identified	1	2					Figure 2-1l
28	29	Category 1,Category 2,Category 3	1 tributary of Tenterfield Creek; Tarban Creek	1 Class 3 identified							Figure 2-1l
29	30	Category 1,Category 2	4 unnamed creeklines	2 Class 3 identified							Figure 2-1l
30	31	Category 2		no potentail drainage lines classified							Figure 2-1m
31	32	Category 2	Gosling Swamp Creek	1 Class 3 identified - Gosling Swamp Ck			1				
32	33	Category 2,Category 3		no potentail drainage lines classified							
33	34	Category 1,Category 2,Category 3	2 drainage lines	1 Class 3 identified	1						
34	35	Category 2,Category 3	Ram Swamp Creek; Halls Creek	3 Class 3 identified- Ram Swamp Ck and 2 tributaries of Halls Ck		1		1			Figure 2-1m, 2-1n
35	36	Category 2	2 tributaries of Halls Creek; 2 drainage lines + Washpool Creek	1 Class 3 identified			1				Figure 2-1n, 2-1o
36	37	Category 2	Chinamans Swamp Creek	1 Class 3 identified				1			Figure 2-1o
37	38	Category 2	2 Cataract River Tributaries + Chinamans Swamp	1 Class 3 identified, 1 Class 1 identified- Cataract River				1			Figure 2-1o
38	39	Category 1,Category 2,Category 3	1 intersection of Cataract River	1 Class 3 identified- Black Swamp Ck; 1 Class 1 identified- Cataract River				1			Figure 2-1o, 2-1p
39	40	Category 2	2 minor drainage lines	no potentail drainage lines classified							Figure 2-1p

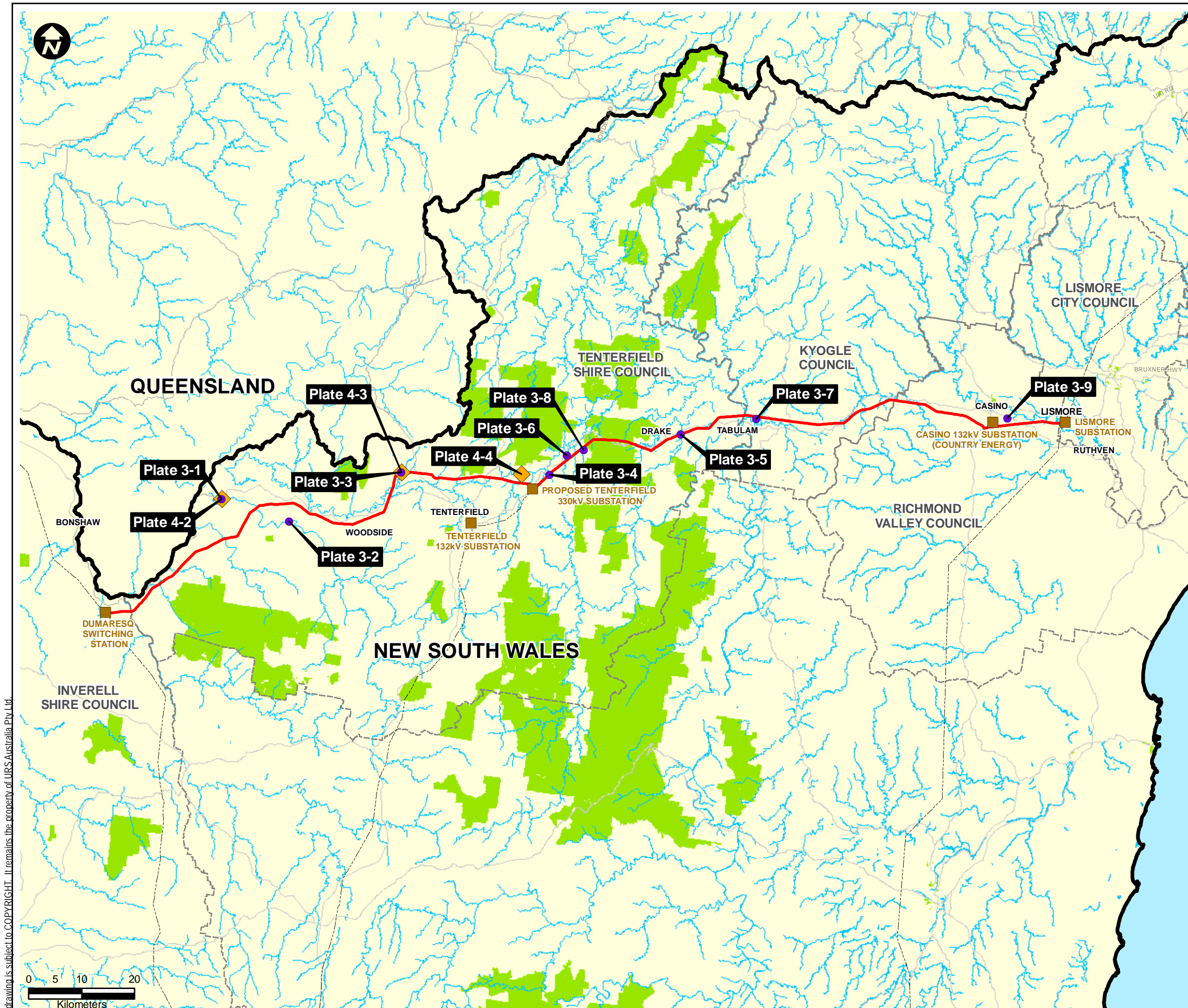
Based on proposed Alignment and Access Track Aerial and Topographic mapping as of 21.02.2011

TABLE B-1: Alignment and Access Track intersection of watercourses

Alignment Span (AP) Assessed Access track Category Drainage lines, Creeks and Streams Waterway Classification					Identified Creek Crossings				No. of unaccessed Creek Crossings	Description	Figure References
					Existing to be upgraded		New creek crossing to be installed				
					On easement	Off easement	On easement	Off easement			
Alignment east											
40	41	as per existing	5 potential drainage lines	4 Class 3 identified						existing access arrangements to 132kV line	Figure 2-1p, 2-1q
41	42	existing, Category 1, Category 2	Clear Creek (2 intersections); Sandy Creek; Sheep Yard Creek; Slaty Creek; multiple drainage lines (3)	4 Class 3 identified					1	off easement Category 1 access required to traverse Sheeppyard Creek, and on easement access across Slaty creek	
42	43	Category 1	Crooked Creek	1 Class 3 identified - Crooked Ck					1	Category 1 access track likely to cross Crooked Creek; existing access to be utilised where poss- further field inspection	Figure 2-1r
43	44	existing, Category 1, Category 2		1 Class 3 identified							
44	45	existing, Category 1, Category 2	White Rock Gully; Plumbago Creek	3 Class 3 identified- White Rock Gully and 2 tributaries of Plumbago Creek					2	Category 2 off easement track to traverse Plumbago Creek	Figure 2-1r, 2-1s
45	46	existing, Category 1, Category 2	Violet Creek + 3 unnamed drainage lines	2 Class 3 identified					1	off easement access to cross Violet	Figure 2-1s, 2-1t
46	47	Category 1,Category 2	Teatree Creek + numerous tributaries	5 Class 3 identified					1	Category 2 on easement access track to traverse Teatree Creek	Figure 2-1t
47	48	Category 1,Category 2	2 minor drainage lines (unnamed)	2 Class 3 identified							Figure 2-1u
48	49	Category 1	2 minor drainage lines (unnamed)	2 Class 3 identified	1						
49	50	Category 1	Plumbago Creek; Sandy Creek; Saleyard Gully (intermittent drainage line); Clarence River (also identified as Timbarra River)	2 Class 3 identified; 1 Class 1- Timbarra River (Clarence)						Creek crossing requirement to AP49 avoided by access from east and west	Figure 2-1u, 2-1v
50	51	Category 1,Category 2	2 unnamed creeklines + Tunglebung Creek	2 Class 3 identified- Tunglebung Ck							Figure 2-1v, 2-1w
51	52	Category 1,Category 2	8 potential drainage lines.	1 Class 3 identified, other potential drainage lines unclassified					1		Figure 2-1w, 2-1x
52	53	Category 1,Category 2	7 potential drainage lines.	1 Class 3 identified, other potential drainage lines unclassified	4						Figure 2-1x
53	54	Category 1,Category 2	5 unnamed potential drainage lines. Culmaran Ck according to Geoscience Aust data	1 Class 3 identified- Culmaran Ck	2	1					Figure 2-1x, 2-1y
54	55	Category 1,Category 2	4 potential drainage lines + Shannon Brook	no potentail drainage lines classified					1	off easement access track from Bruxner to cross Shannon Brook	Figure 2-1y
55	56	Category 1,Category 2	2 minor drainage lines (unnamed)	no potentail drainage lines classified		1					Figure 2-1y
56	57	Category 1	1minor drainage line (unnamed)	no potentail drainage lines classified							Figure 2-1y
57	58	Category 1	Mummulgum Creek	1 Class 3 identified- Mummulgum Creek		1			1	off access track intersects	Figure 2-1y, 2-1z
58	59	Category 1,Category 2	Oaky Creek; 2 unnamed drainage lines; Reids Creek	2 Class 3 identified- Oaky Creek, Reids Creek	1				1	on easement access track across Oaky Creek	Figure 2-1z, 2-1aa
59	60	Category 1,Category 3	8 potential drainage lines+ Shannon Brook + adjacent to a swamp/ wetland between the Bruxner Hwy and the current alignment.	1 Class 3 identified; 1 Class 1 - Shannon Brook							Figure 2-1z, 2-1aa, 2-1ab
60	61	Category 1	2 drainage lines	no potentail drainage lines classified							Figure 2-1ab
61	62	existing,Category 1,Category 3	Adjacent to swamp area west of Benns Rd. 4 unnamed drainge lines. Swamp/ wetland to the North of Alignment from AP 62 (adjacent to	2 intersections of 1 Class 3 waterway; other potential drainage lines unclassified							Figure 2-1ac
62	63	Category 1,Category 3		no potentail drainage lines classified							
63	64	existing, Category 3		no potentail drainage lines classified							
64	65	Access to be negotiated with landholders across prime agricultural land as per exisiting approach		no potentail drainage lines classified							
65	66			1 Class 3 identified							
66	67		Richmond River	1 Class 1 - Richmond River							Figure 2-1ae
67	68		Walsh's Creek	1 Class 3 identified- Walshs Ck							Figure 2-1ae
68	69			no potentail drainage lines classified							Figure 2-1ae
69	70			no potentail drainage lines classified							Figure 2-1ae
70	71			no potentail drainage lines classified							Figure 2-1ae

Class 1 waterways
 Class 2 waterways

This drawing is subject to COPYRIGHT. It remains the property of URS Australia Pty Ltd



LEGEND:

- Existing Transmission Lines
- Proposed 330kV Alignment[^]
- Substation/Switching Station
- State Border
- Local Government Area
- Roads
- Waterways
- National Park/State Forest
- Photographed Surface Water Features
- Photographed Watercourse Crossing

Symbols and lines used in this figure are indicative and are not intended to reflect actual size of represented features.
Symbols and lines have been enhanced to aid visibility.

Source: Photos from URS, 2009
^ Transgrid 2010

Map compiled using MapInfo StreetPro and NPWS Data.
© 2010 MapInfo Australia Pty Ltd, NPWS and PSMA Australia Ltd.
URS Australia, MapInfo Australia, NPWS or PSMA Australia do not warrant the accuracy or completeness of information in this publication and any person using or relying upon such information does so on the basis that these companies shall bear no responsibility or liability whatsoever for any errors, faults, defects or omissions in the information.

Drawn: AO	Approved: KT	Date: 22/11/2010
Job No.: 43177662	File No.: 43177662.113.mxd	
Client TransGrid		
Project FAR NORTH NSW (DUMARESQ - LISMORE 330kV TRANSMISSION LINE) PROJECT		
Title SURFACE WATER AND HYDROLOGY ASSESSMENT PHOTO LOCATIONS		
Figure:B-1		

Datum: GDA94, Projection: UTM, Grid: MGA Zone 56

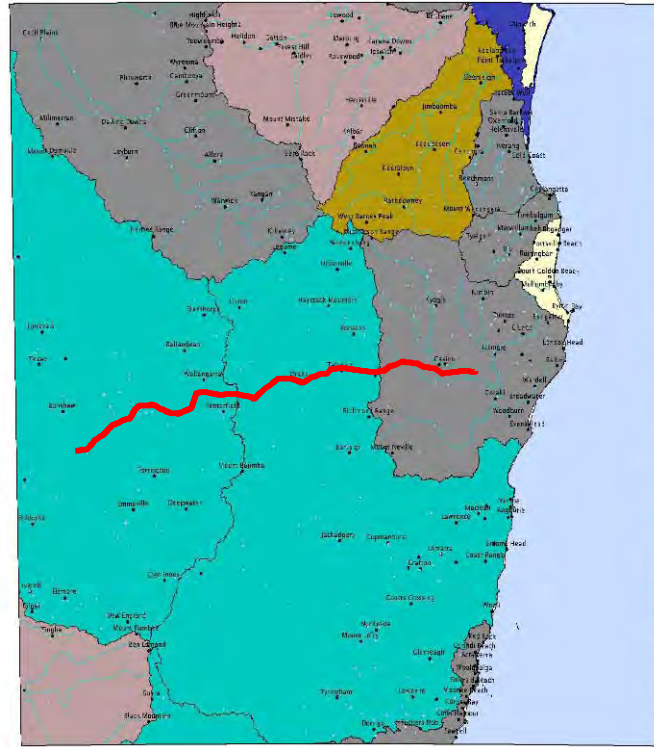
Appendix C NRAtlas Database Water Quality Information



Legend

- Surface water gauging stations
- Localities - 2.5M
- Drainage - 2.5M
- Water quality - turbidity exceedance
 - Major issue
 - Significant Issue
 - Not a significant issue
 - Undetermined issue
 - No Coverage
- Ramsar Wetlands
- Directory of Important Wetlands
- Coastline - 2.5M
- State borders overview map

50 km



Legend

- Surface water gauging stations
- Localities - 2.5M
- Drainage - 2.5M
- Water quality - salinity exceedance
 - Major issue
 - Significant Issue
 - Not a significant issue
 - Undetermined issue
 - No Coverage
- Ramsar Wetlands
- Directory of Important Wetlands
- Coastline - 2.5M
- State borders overview map

50 km



Legend

- Surface water gauging stations
- Localities - 2.5M
- Drainage - 2.5M
- Water quality - pH exceedance
 - Major issue
 - Significant Issue
 - Not a significant issue
 - Undetermined issue
 - No Coverage
- Ramsar Wetlands
- Directory of Important Wetlands
- Coastline - 2.5M
- State borders overview map

50 km



Legend

- Surface water gauging stations
- Localities - 2.5M
- Drainage - 2.5M
- Water quality - nutrient exceedance
 - Major issue
 - Significant Issue
 - Not a significant issue
 - Undetermined issue
 - No Coverage
- Ramsar Wetlands
- Directory of Important Wetlands
- Coastline - 2.5M
- State borders overview map

50 km

LEGEND:

Proposed 330kV Alignment^

Symbols and lines used in this figure are indicative and are not intended to reflect actual size of represented features. Symbols and lines have been enhanced to aid visibility.

Source: Compiled from NR Atlas Database search result

URS Australia do not warrant the accuracy or completeness of information in this publication and any person using or relying upon such information does so on the basis that these companies shall bear no responsibility or liability whatsoever for any errors, faults, defects or omissions in the information.

Drawn: AO Approved: KT Date: 22/11/2010

Job No.: 43177662 File No.: 43177662.080.mxd

Client TransGrid

Project FAR NORTH NSW (DUMARESQ - LISMORE 330kV TRANSMISSION LINE) PROJECT

Title MAJOR WATER QUALITY ISSUES

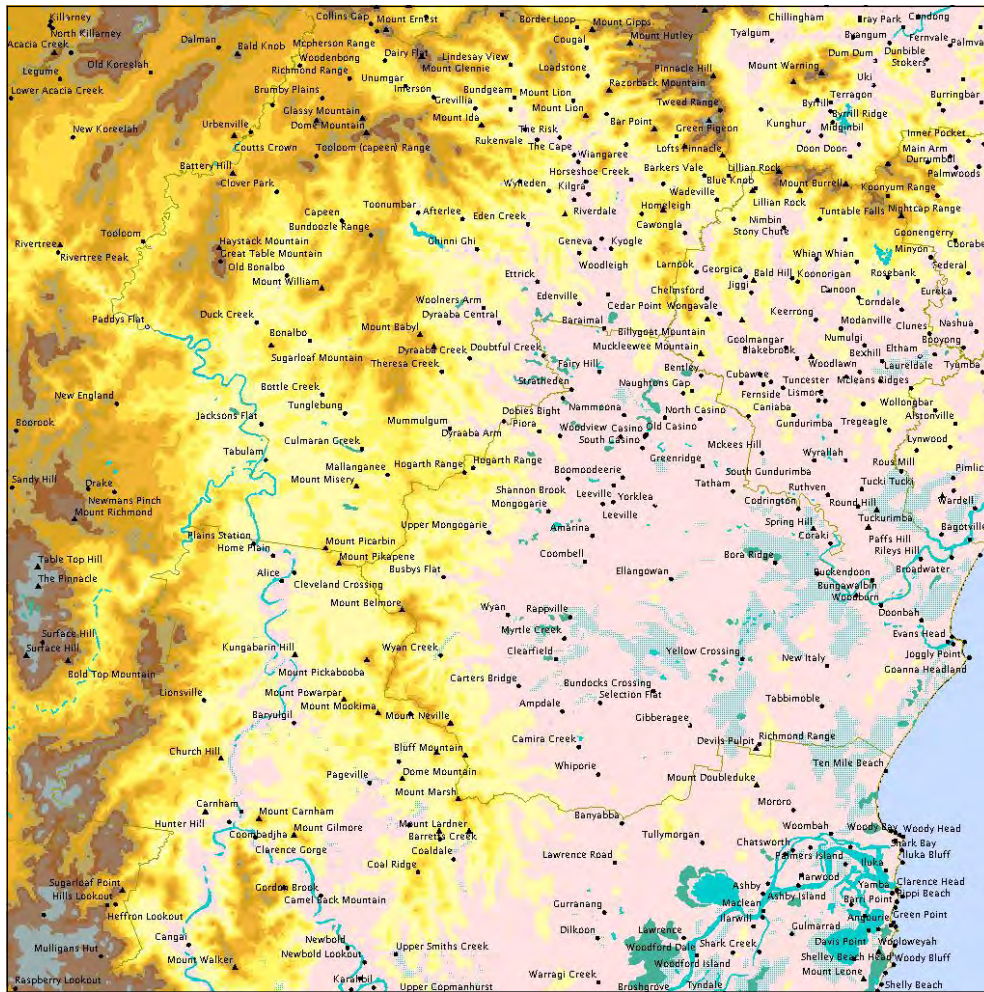
Figure: C-1



Elevation and topography - East

28° 18' 50" S

152° 14' 30" E



Legend

- Surface water gauging stations
- Localities - 250K
- Mountain
- All other localities
- Waterbodies - 250K
- Subject to inundation
- Swamp
- Saline coastal flat
- Waterbodies
- Local Government Areas
- Digital Elevation Model (DEM) 9 seconds
- Coastline - 250K
- State borders overview map



20 km

29° 33' 40" S

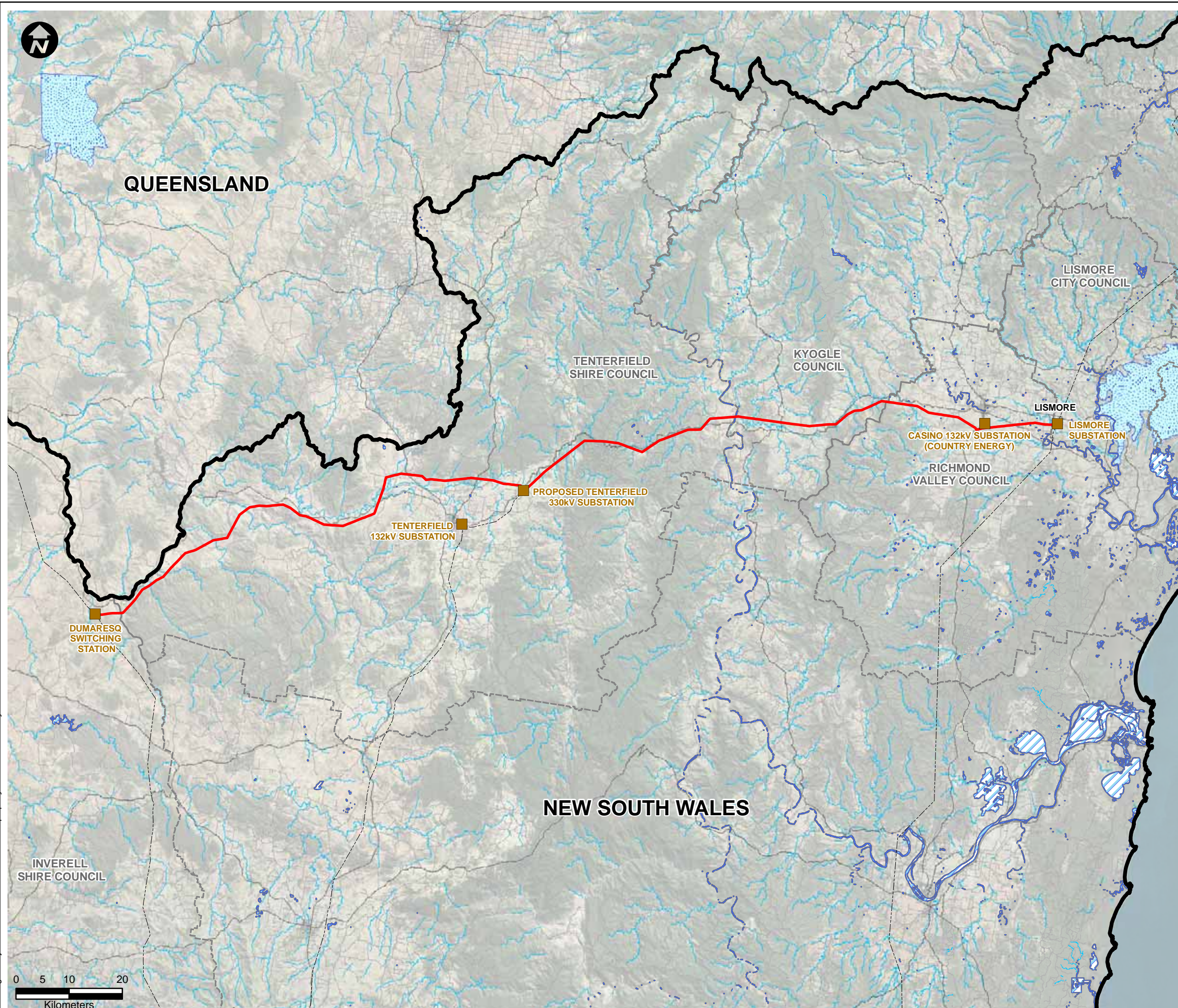
153° 29' 20" E

Map produced using the Australian Natural Resources Atlas from the National Land and Water Resources Audit, a Program of the Natural Heritage Trust

Citations

NLWRA (2000) Australian Water Resources Assessment 2000 - Surface Water Management Areas, (c) Commonwealth of Australia
 Geoscience Australia (1989) GEODATA TOPO-10M - Localities, (c) Commonwealth of Australia
 Geoscience Australia (2006) GEODATA TOPO-250K (Series 3) - Localities, (c) Commonwealth of Australia
 Geoscience Australia (2006) GEODATA TOPO-250K (Series 3) - Waterbodies, (c) Commonwealth of Australia
 Geoscience Australia (1989) GEODATA TOPO-10M - Waterbodies, (c) Commonwealth of Australia
 (c) 2007 MapData Sciences Pty Ltd, PSMA
 Geoscience Australia (2000) GEODATA 9 Second Digital Elevation Model (DEM-9S) Version 2, (c) Commonwealth of Australia
 Geoscience Australia (2006) GEODATA TOPO-250K (Series 3) - Coastline, (c) Commonwealth of Australia
 Geoscience Australia (1989) GEODATA TOPO-10M - Coastline, (c) Commonwealth of Australia
 Geoscience Australia (1998) MAPDATA TOPO-25M - State Borders, (c) Commonwealth of Australia

This drawing is subject to COPYRIGHT. It remains the property of URS Australia Pty Ltd.



LEGEND:

- Existing Transmission Lines[^]
- Proposed 330kV Alignment[^]
- Substation/Switching Station
- Roads
- Waterways
- ▨ Wetlands*
- ▤ Groundwater Dependent Ecosystems*
- ▭ State Border
- ▭ Local Government Area

Symbols and lines used in this figure are indicative and are not intended to reflect actual size of represented features.
Symbols and lines have been enhanced to aid visibility.

Source: Aerial Imagery from © Microsoft Bing Maps 2010
[^] Transgrid 2010
* Wetlands of New South Wales, Department of Environment, Climate Change & Water - DECCW (2003)
* Australian Water Resources Assessment 2000 - NLWRA (2000) Surface Water Management Areas, (c) Commonwealth of Australia

Map compiled using MapInfo StreetPro and NPWS Data.
© 2010 MapInfo Australia Pty Ltd, NPWS and PSMA Australia Ltd.
URS Australia, MapInfo Australia, NPWS or PSMA Australia Ltd. do not warrant the accuracy or completeness of information in this publication and any person using or relying upon such information does so on the basis that these companies shall bear no responsibility or liability whatsoever for any errors, faults, defects or omissions in the information.

Drawn: AO/SB	Approved: KT	Date: 02/02/2011
Job No.: 43177662	File No.: 43177662.079.mxd	
Client TransGrid		
Project FAR NORTH NSW (DUMARESQ - LISMORE 330kV TRANSMISSION LINE) PROJECT		
Title WETLANDS AND GROUNDWATER DEPENDENT ECOSYSTEMS		
Figure: C-3		

Datum: GDA94, Projection: UTM, Grid: MGA Zone 56

Appendix D Groundwater bore information

Groundwater Works Summary (Source: <http://is2.dnr.nsw.gov.au> (accessed 14/10/2010))

Groundwater Number	Authorised Purpose	Final Depth	Depth of Water	Location
GW018922	DOMESTIC STOCK	10.4	9.1	N:6775932.00 E:349245.00
GW022115	STOCK	8.2	NO DATA	N:6782984.00 E:356589.00
GW901378	INDUSTRIAL (LOW SECURITY) IRRIGATION	63.0	NO DATA	N:67757.00 E:348112.00
GW022115 (REPEAT)	STOCK	8.2	NO DATA	N:6782984.00 E:356589.00
GW022116	STOCK	9.1	6.1	N:6779102.00 E:361369.00
GW306313	DOMESTIC STOCK	15.5	7.0	N:6783795.00 E:370682.00
GW966584	DOMESTIC STOCK	54.0	NO DATA	N:6793717.00 E:375298.00
GW005264	STOCK	6.7	NO DATA	N:6784561.00 E:384536.00
GW967506	DOMESTIC STOCK	9.0	NO DATA	N:6787546.00 E:390909.00
GW968348	DOMESTIC	25.91	NO DATA	N:6789025.00 E:396589.00
GW966289	DOMESTIC STOCK	36.0	25.0	N:6790169.00 E:406232.00
GW068224	DOMESTIC STOCK	15.24	3.6	N:6783414.00 E:405419.00
GW304849	DOMESTIC STOCK	27.5	10.0	N:6790652.00

Appendix D

Groundwater Number	Authorised Purpose	Final Depth	Depth of Water	Location
				E:416639.00
GW067613	DOMESTIC STOCK	50.0	20.32	N:6799931.00 E:439226.00
GW306034	DOMESTIC FARMING IRRIGATION STOCK	67.0	24.0	N:6810779.00 E:467363.00
GW303579	DOMESTIC FARMING STOCK	94.0	21.0 26.0 35.0	N:6810085.00 E:468780.00
GW038248	DOMESTIC STOCK	4.5	NO DATA	N:6804826.00 E:482824.00
GW072712	DOMESTIC STOCK	26.0	18.0	N:6808525.00 E:488425.00
GW031361	DOMESTIC FARMING STOCK	12.8	6.1	N:6807552.00 E:492194.00
GW038475	STOCK	13.7	13.4	N:6807978.00 E:498777.00
GW037221	STOCK	30.5	26.2	N:6808624.00 E:499617.00
GW031915	DOMESTIC FARMING STOCK	61.0	47.2	N:6810680.00 E:512082.00
GW066163	DOMESTIC	18.0	13.4	N:6805791.00 E:507147.00



URS Australia Pty Ltd
Level 4, 407 Pacific Highway
Artarmon NSW 2064
Australia
T: 61 2 8925 5500
F: 61 2 8925 5555

www.ap.urscorp.com