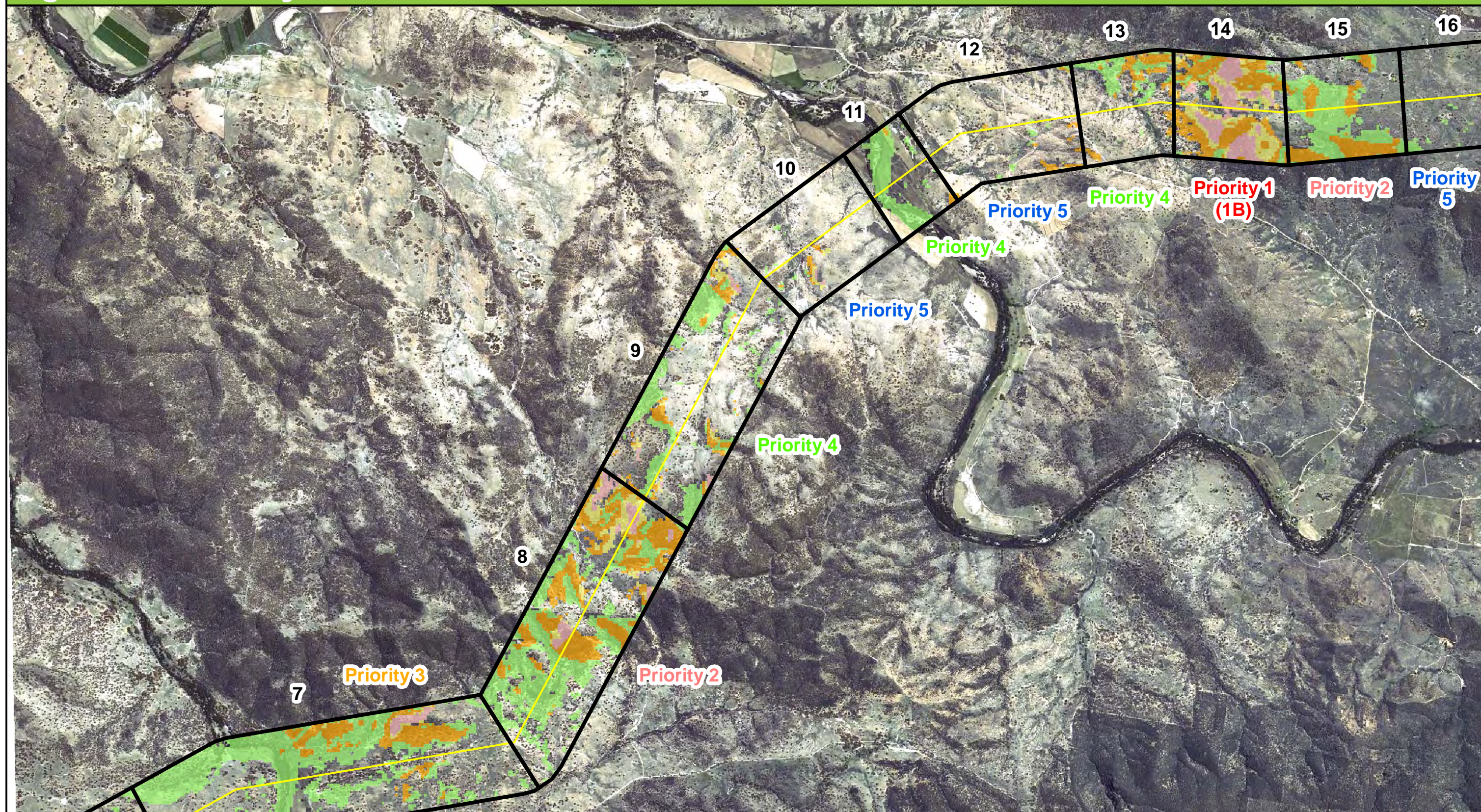


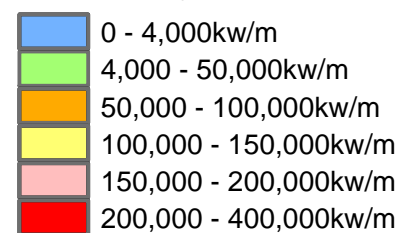
Figure 6: Fire intensity in sections 7-16



Preferred centerline of
proposed 330kV
alignment

1km wide bushfire
study corridor

Fire Intensity



**Risk Management Priority
of numbered sections**

Highest **Priority 1** (subdivided into 1A, 1B & 1C from high to low)

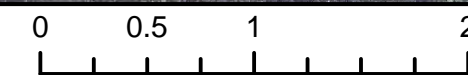
Priority 2

Priority 3

Priority 4

Priority 5

Lowest

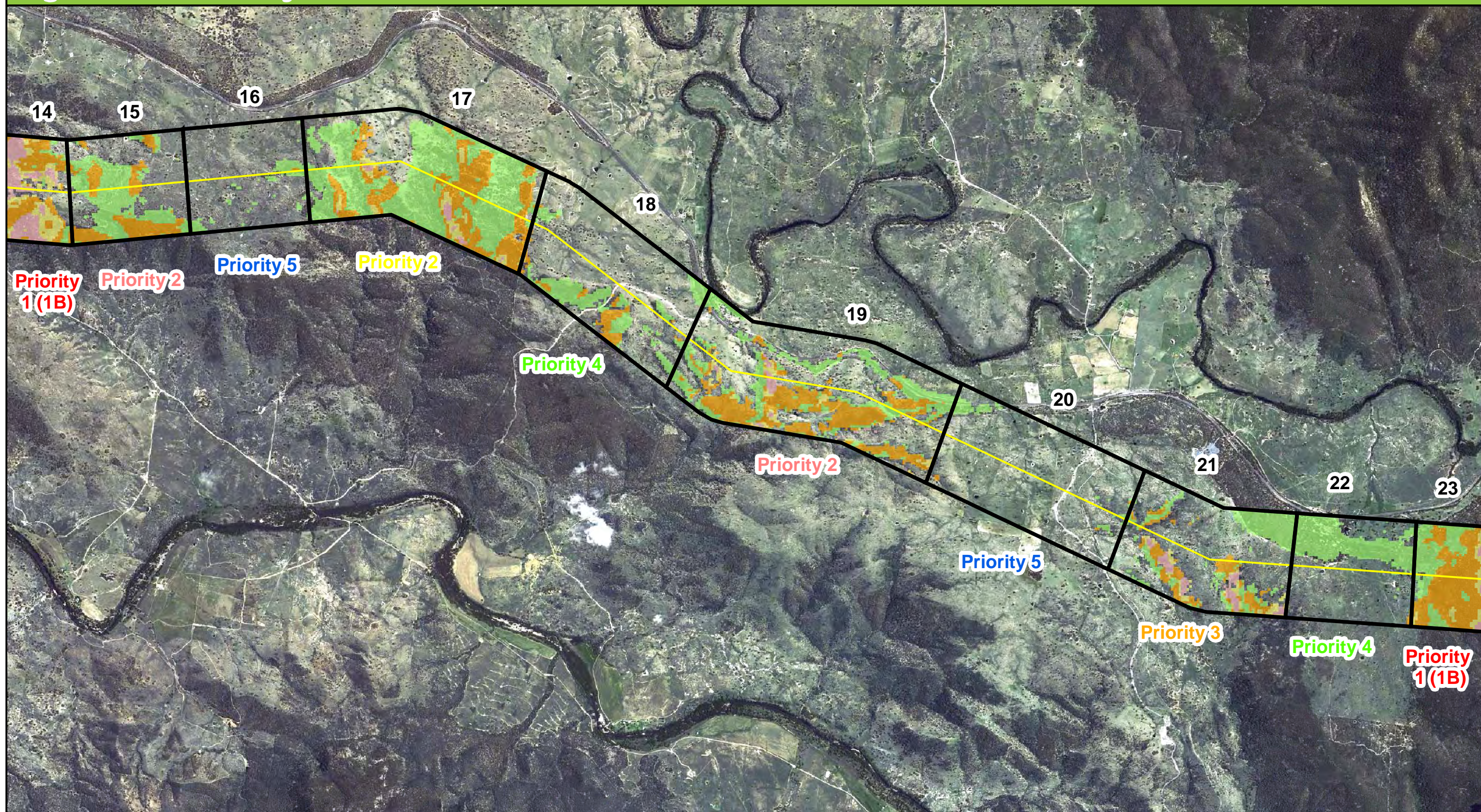


Datum/Projection:
GDA 1994 MGA Zone 56



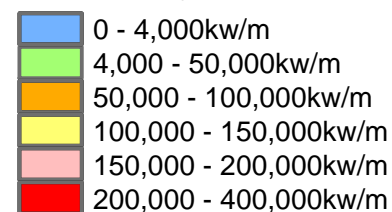
Data Sources:
Google Earth
URS

Figure 7: Fire intensity in sections 14-23



Preferred centerline of proposed 330kV alignment
 1km wide bushfire study corridor

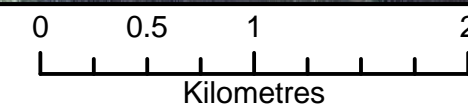
Fire Intensity



Risk Management Priority of numbered sections

Highest **Priority 1** (subdivided into 1A, 1B & 1C from high to low)

Priority 2
Priority 3
Priority 4
Priority 5
 Lowest



Datum/Projection:
 GDA 1994 MGA Zone 56

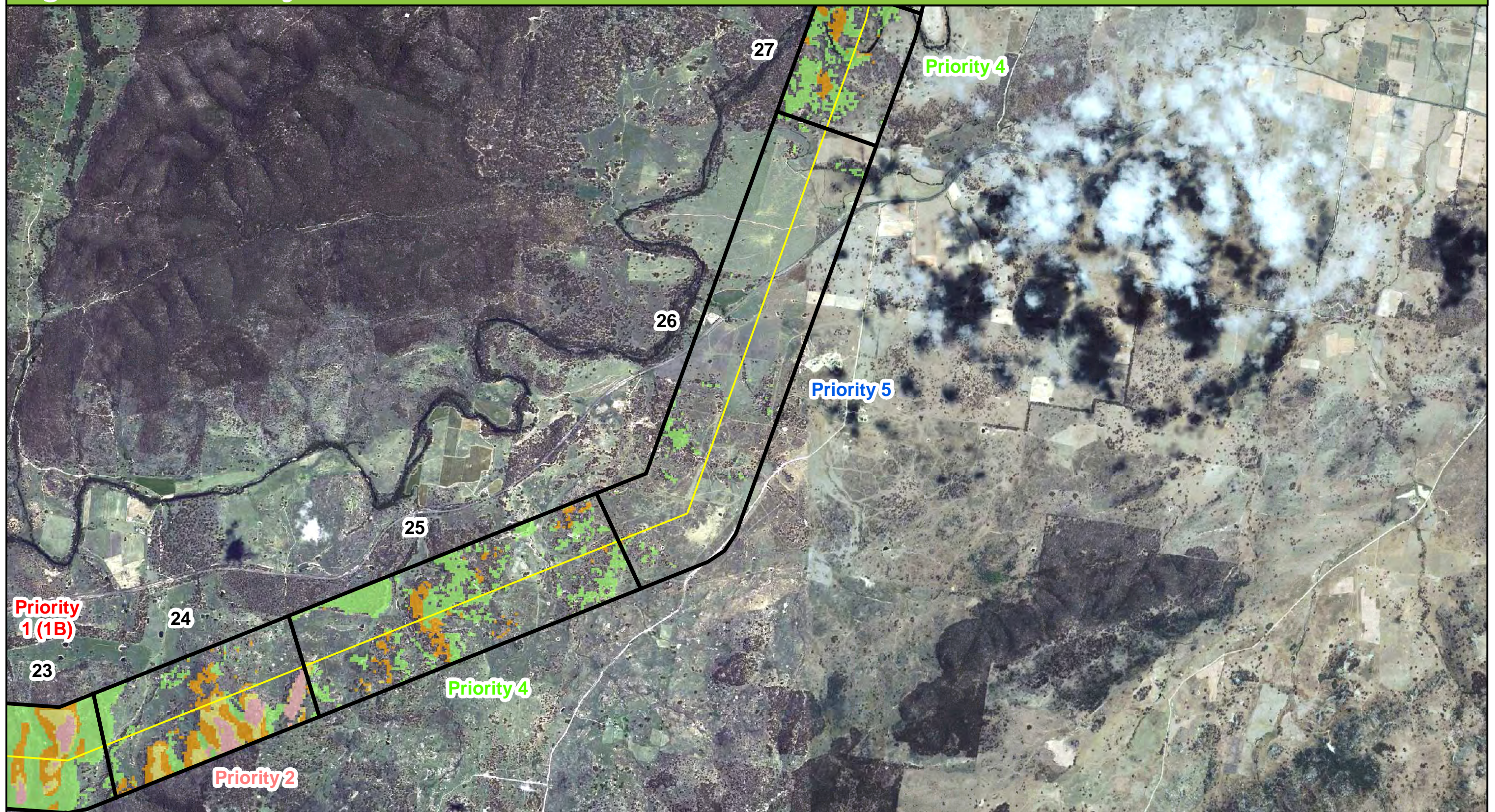


eco logical
 AUSTRALIA

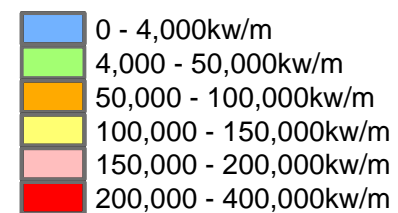
www.ecoaus.com.au

Data Sources:
 Google Earth
 URS

Figure 8: Fire intensity in sections 23-27

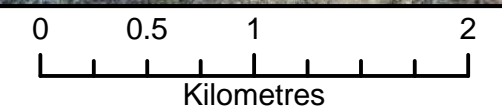


Fire Intensity



Risk Management Priority of numbered sections

Highest **Priority 1** (subdivided into 1A, 1B & 1C from high to low)
Priority 2
Priority 3
Priority 4
 Lowest **Priority 5**

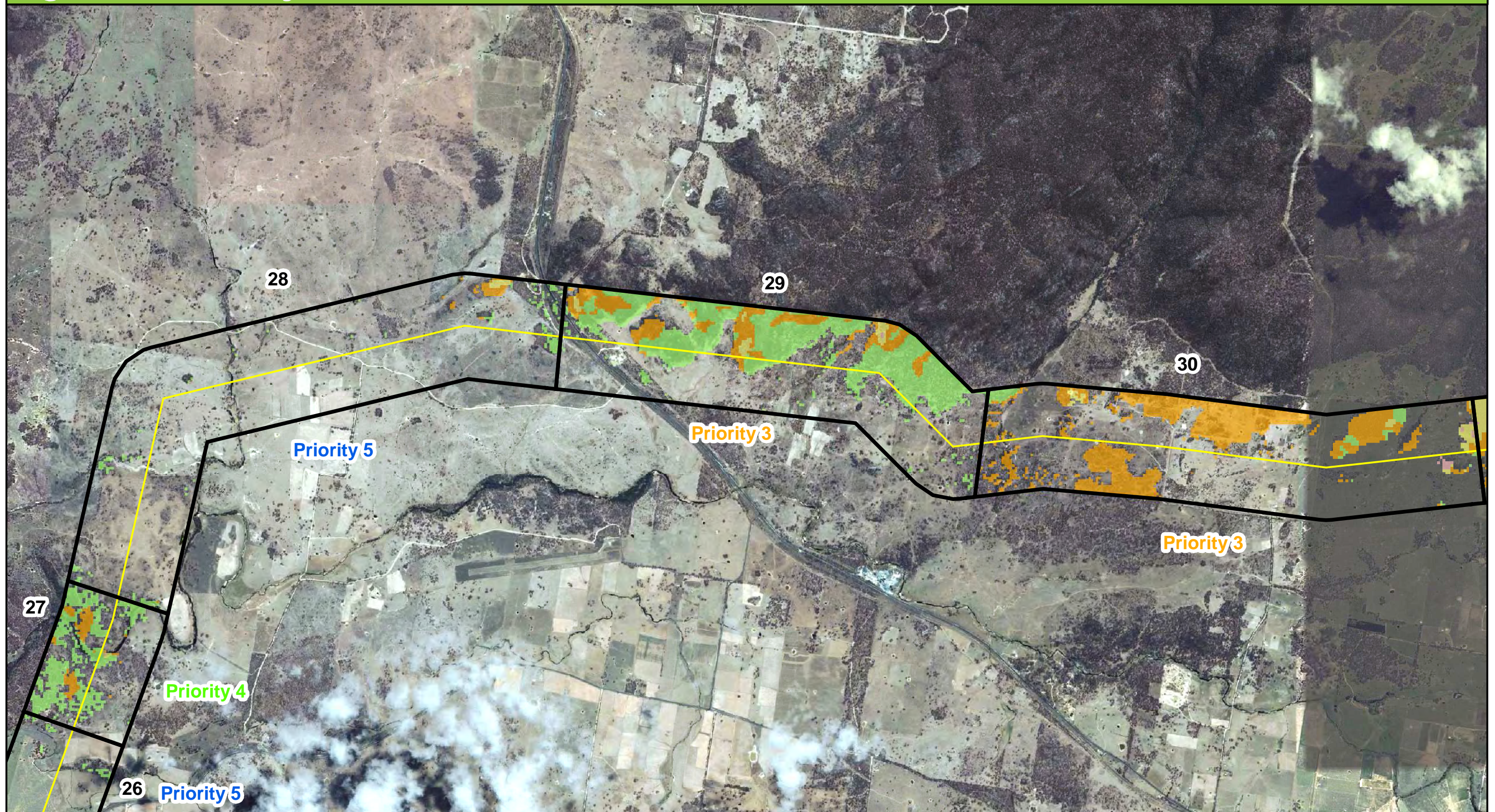


Datum/Projection:
GDA 1994 MGA Zone 56



Data Sources:
Google Earth
URS

Figure 9: Fire intensity in sections 26-30



Client: TransGrid

Project Number: 10GOSBUS-0080

Fire Intensity

Blue	0 - 4,000kw/m
Light Green	4,000 - 50,000kw/m
Orange	50,000 - 100,000kw/m
Yellow	100,000 - 150,000kw/m
Light Red	150,000 - 200,000kw/m
Red	200,000 - 400,000kw/m

Risk Management Priority of numbered sections

Highest **Priority 1** (subdivided into 1A, 1B & 1C from high to low)

↓

Lowest **Priority 5**

0 0.5 1 2

Kilometres

Datum/Projection:
GDA 1994 MGA Zone 56

eco logical AUSTRALIA

www.ecoaus.com.au

Preferred centerline of proposed 330kV alignment

1km wide bushfire study corridor

Data Sources:
Google Earth
URS