



Section 2

330kV Alignment and Access Tracks

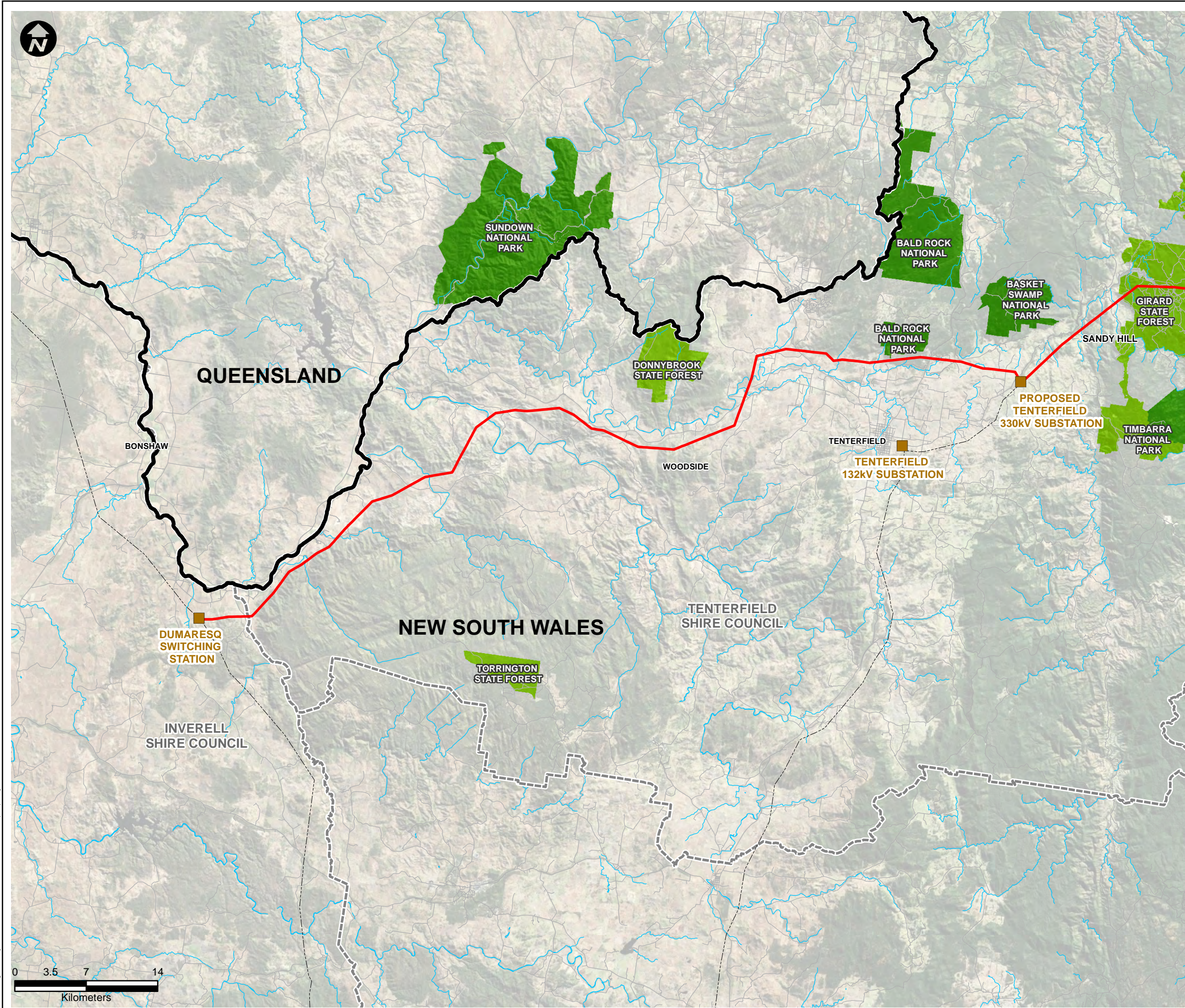
Figures 3-1a – 3-1b
Figures 3-2a – 3-2ae
Figures 3-3a – 3-3ae



Section 2

Figures 3-1a – 3-1b

This drawing is subject to COPYRIGHT. It remains the property of TransGrid.




LEGEND:

- Existing Transmission Lines^
- Proposed 330kV Alignment^
- Substation/Switching Station
- Roads
- Waterways
- ▬ State Border
- ▬ Local Government Area
- National Park
- State Forest

Symbols and lines used in this figure are indicative and are not intended to reflect actual size of represented features.
Symbols and lines have been enhanced to aid visibility.

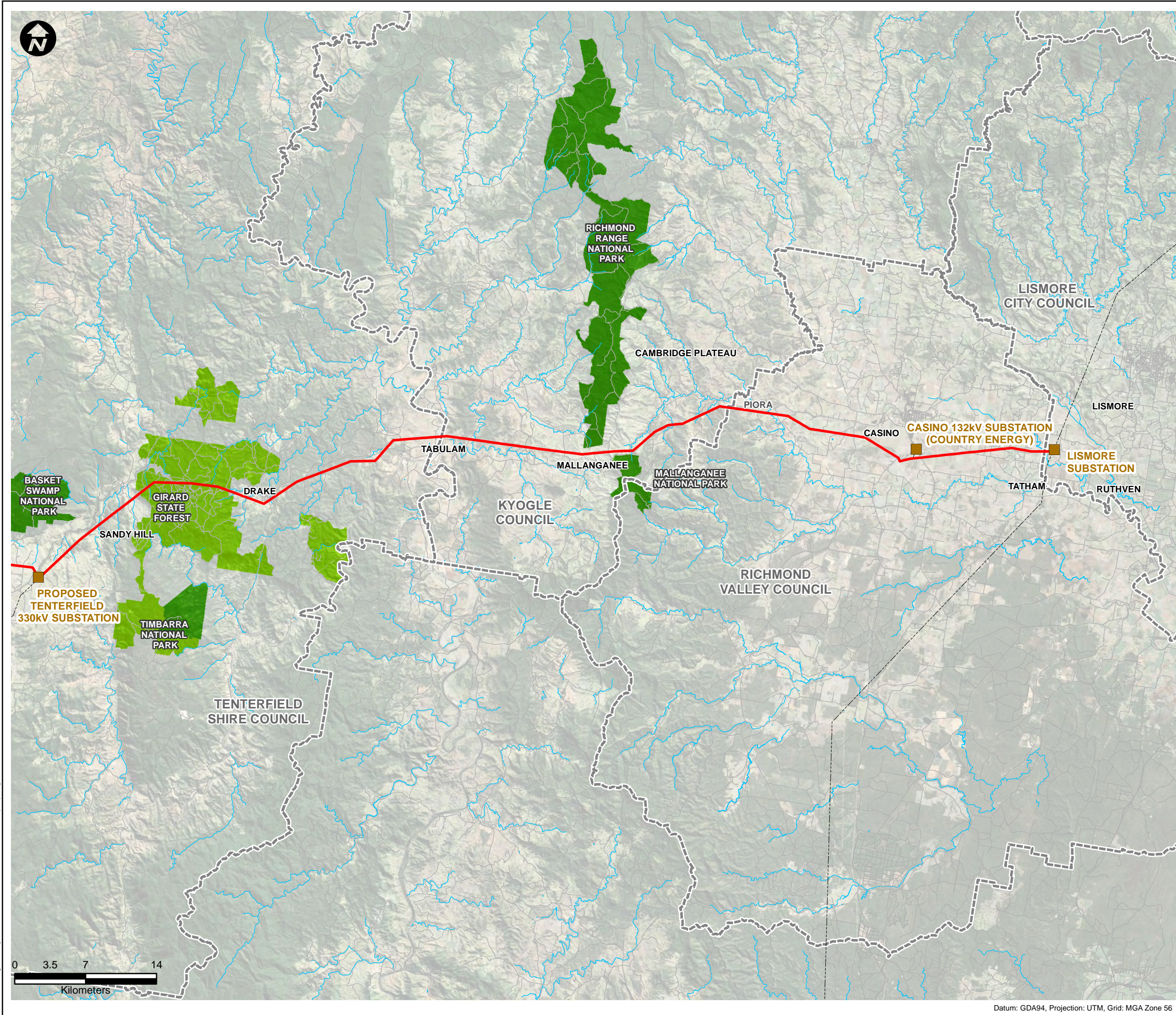
Source: Aerial Imagery from Microsoft © Bing Maps
^ TransGrid 2010

Map compiled using MapInfo StreetPro and NPWS Data.
© 2010 MapInfo Australia Pty Ltd, NPWS and PSMA Australia Ltd.
URS Australia, MapInfo Australia, NPWS or PSMA Australia do not warrant the accuracy or completeness of information in this publication and any person using or relying upon such information does so on the basis that these companies shall bear no responsibility or liability whatsoever for any errors, faults, defects or omissions in the information.

Drawn: AO/SB	Approved: WM/TH	Date: 24/05/2011
Job No.: 43177662		File No.: 43177662.124.mxd
Client TransGrid		
Project FAR NORTH NSW (DUMARESQ - LISMORE 330kV TRANSMISSION LINE) PROJECT		
Title ALIGNMENT (WEST)		
Figure: 3-1a		
		

Datum: GDA94, Projection: UTM, Grid: MGA Zone 56

This drawing is subject to COPYRIGHT. It remains the property of TransGrid.




LEGEND:

- Existing Transmission Lines^
- Proposed 330kV Alignment^
- Substation/Switching Station
- Roads
- Waterways
- State Border
- Local Government Area
- National Park
- State Forest

Symbols and lines used in this figure are indicative and are not intended to reflect actual size of represented features.
Symbols and lines have been enhanced to aid visibility.

Source: Aerial Imagery from Microsoft © Bing Maps
^ TransGrid 2010

Map compiled using MapInfo StreetPro and NPWS Data.
© 2010 MapInfo Australia Pty Ltd, NPWS and PSMA Australia Ltd.
URS Australia, MapInfo Australia, NPWS or PSMA Australia do not warrant the accuracy or completeness of information in this publication and any person using or relying upon such information does so on the basis that these companies shall bear no responsibility or liability whatsoever for any errors, faults, defects or omissions in the information.

Drawn: AO/SB	Approved: WM/TH	Date: 24/05/2011
Job No.: 43177662	File No.: 43177662.124.mxd	
Client	TransGrid	
Project	FAR NORTH NSW (DUMARESQ - LISMORE 330kV TRANSMISSION LINE) PROJECT	
Title	ALIGNMENT (EAST)	
Figure: 3-1b		
		

Datum: GDA94, Projection: UTM, Grid: MGA Zone 56