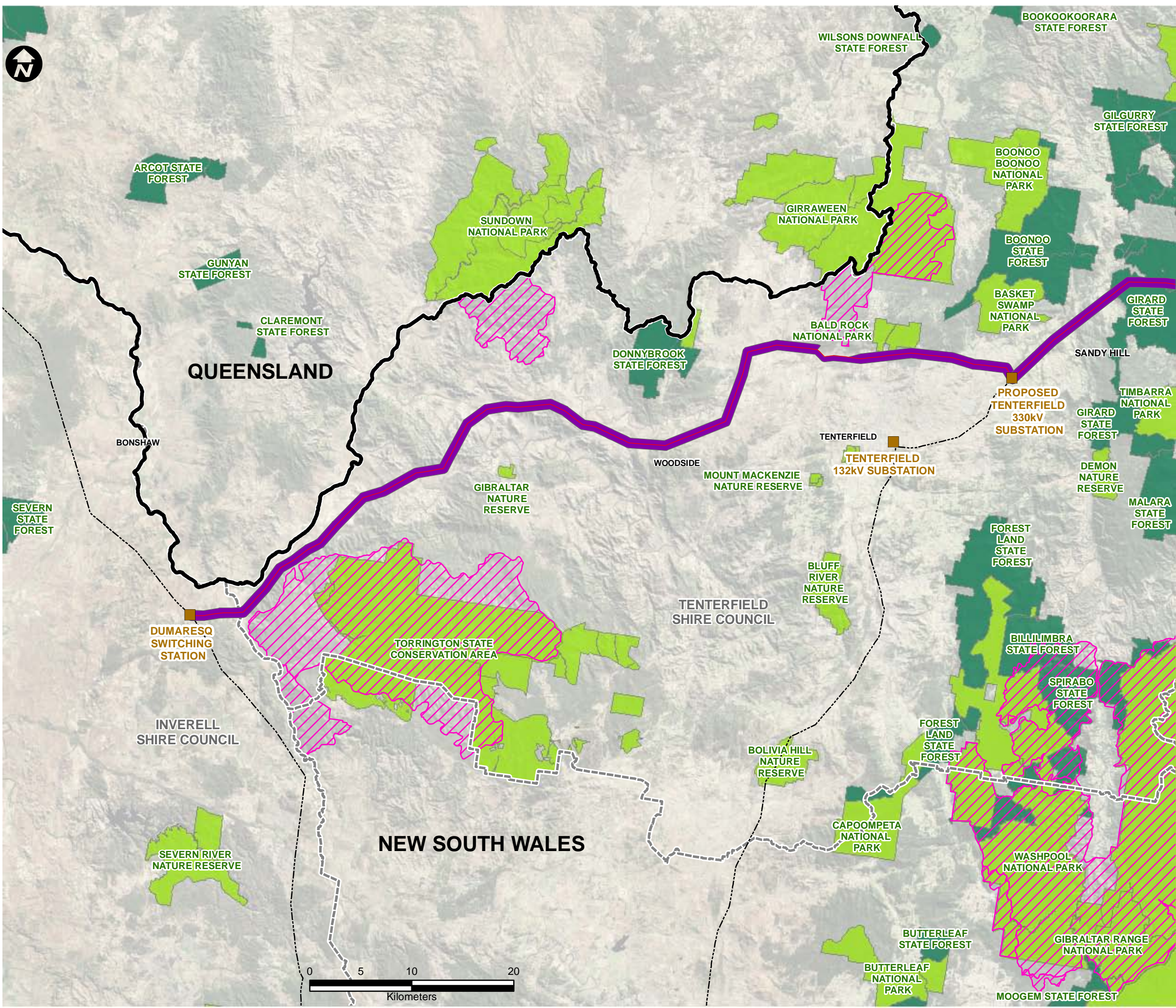




## Section 3

### Appendix F Figures: Biodiversity Assessment





**LEGEND:**

- Proposed 330kV Alignment^
- Existing Transmission Lines^
- Substation/Switching Station
- State Border
- Local Government Area
- Wilderness Areas
- State Forest
- National Parks, Nature Reserve, State Government Area
- Study Area

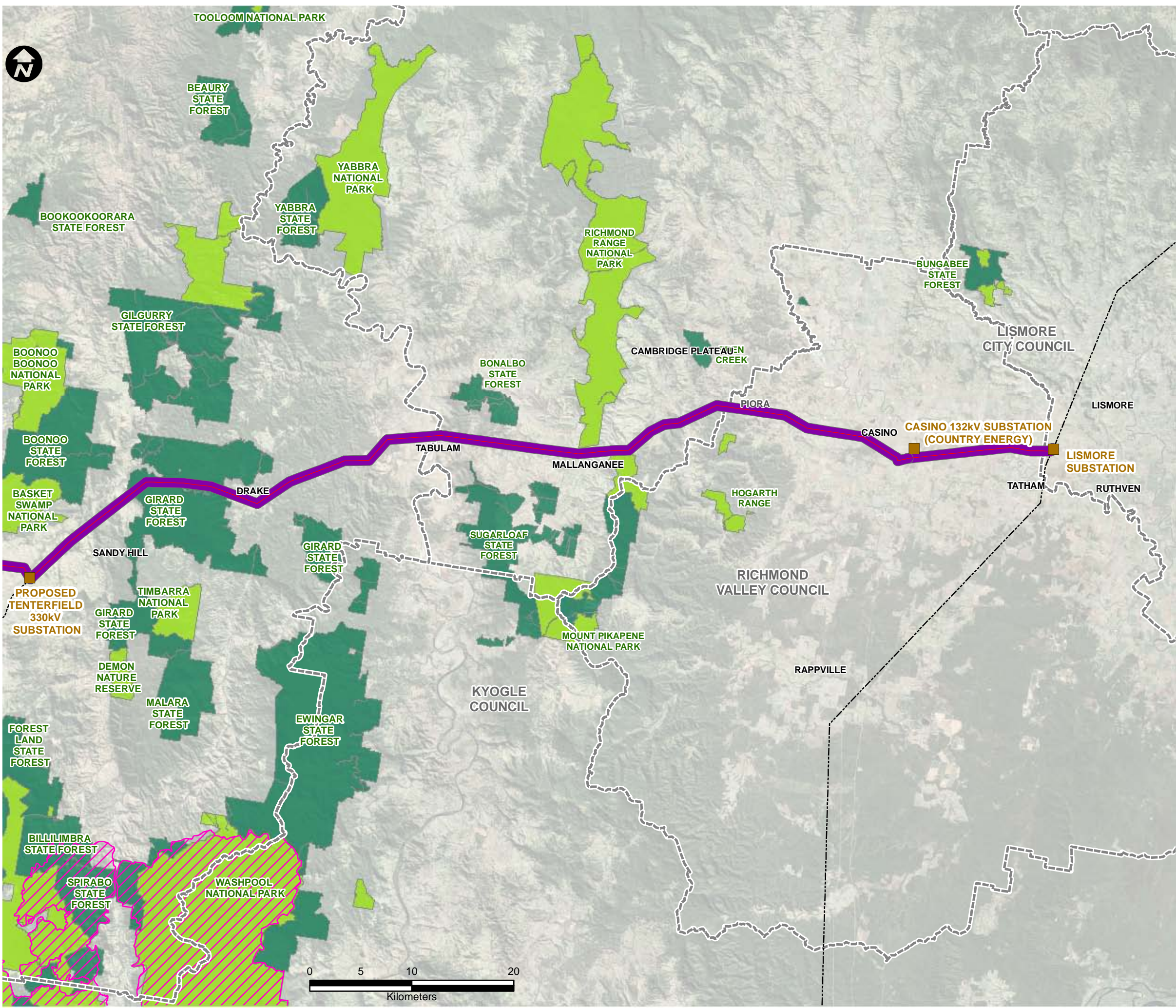
Symbols and lines used in this figure are indicative and are not intended to reflect actual size of represented features. Symbols and lines have been enhanced to aid visibility.

Source: Aerial Imagery from Microsoft © Bing Maps  
^ Transgrid 2010

Drawn: AO/SB	Approved: JW/MB	Date: 07/12/2010
Job No.: 43177662	File No.: 43177662.144.mxd	
Client TransGrid		
Project FAR NORTH NSW (DUMARESQ - LISMORE 330kV TRANSMISSION LINE) PROJECT		
Title ALIGNMENT WEST		
Figure: 1a		

Datum: GDA94, Projection: UTM, Grid: MGA Zone 56





**LEGEND:**

- Proposed 330kV Alignment<sup>^</sup>
- Existing Transmission Lines<sup>^</sup>
- Substation/Switching Station
- State Border
- Local Government Area
- Wilderness Areas
- State Forest
- National Parks, Nature Reserve, State Government Area
- Study Area

Symbols and lines used in this figure are indicative and are not intended to reflect actual size of represented features. Symbols and lines have been enhanced to aid visibility.

Source: Aerial Imagery from Microsoft © Bing Maps  
<sup>^</sup> Transgrid 2010

Drawn: AO/SB	Approved: JW/MB	Date: 07/12/2010
--------------	-----------------	------------------

Job No.: 43177662	File No.: 43177662.144.mxd
-------------------	----------------------------

Client	TransGrid
--------	-----------

Project	FAR NORTH NSW (DUMARESQ - LISMORE 330kV TRANSMISSION LINE) PROJECT
---------	---

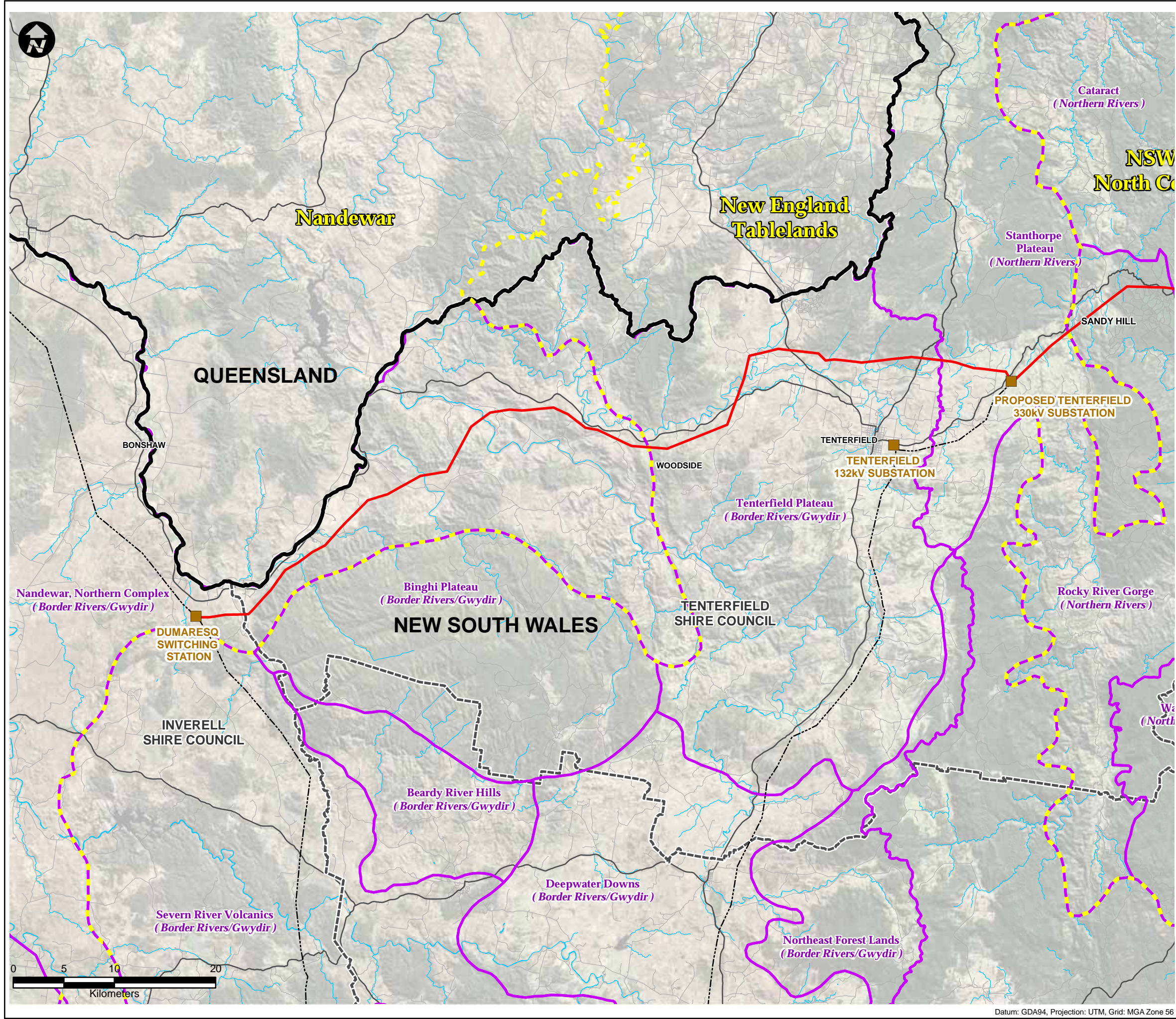
Title	ALIGNMENT EAST
-------	----------------

Figure: 1b
------------





This drawing is subject to COPYRIGHT. It remains the property of URS Australia Pty Ltd.



**LEGEND:**

- Existing Transmission Lines^
- Proposed 330kV Alignment^
- Substation/Switching Station
- CMA Subregions (Regions)
- Australia's Bioregions (IBRA)\*
- ▬ State Border
- ▬ Local Government Area
- ▬ Roads
- ▬ Waterways

Symbols and lines used in this figure are indicative and are not intended to reflect actual size of represented features. Symbols and lines have been enhanced to aid visibility.

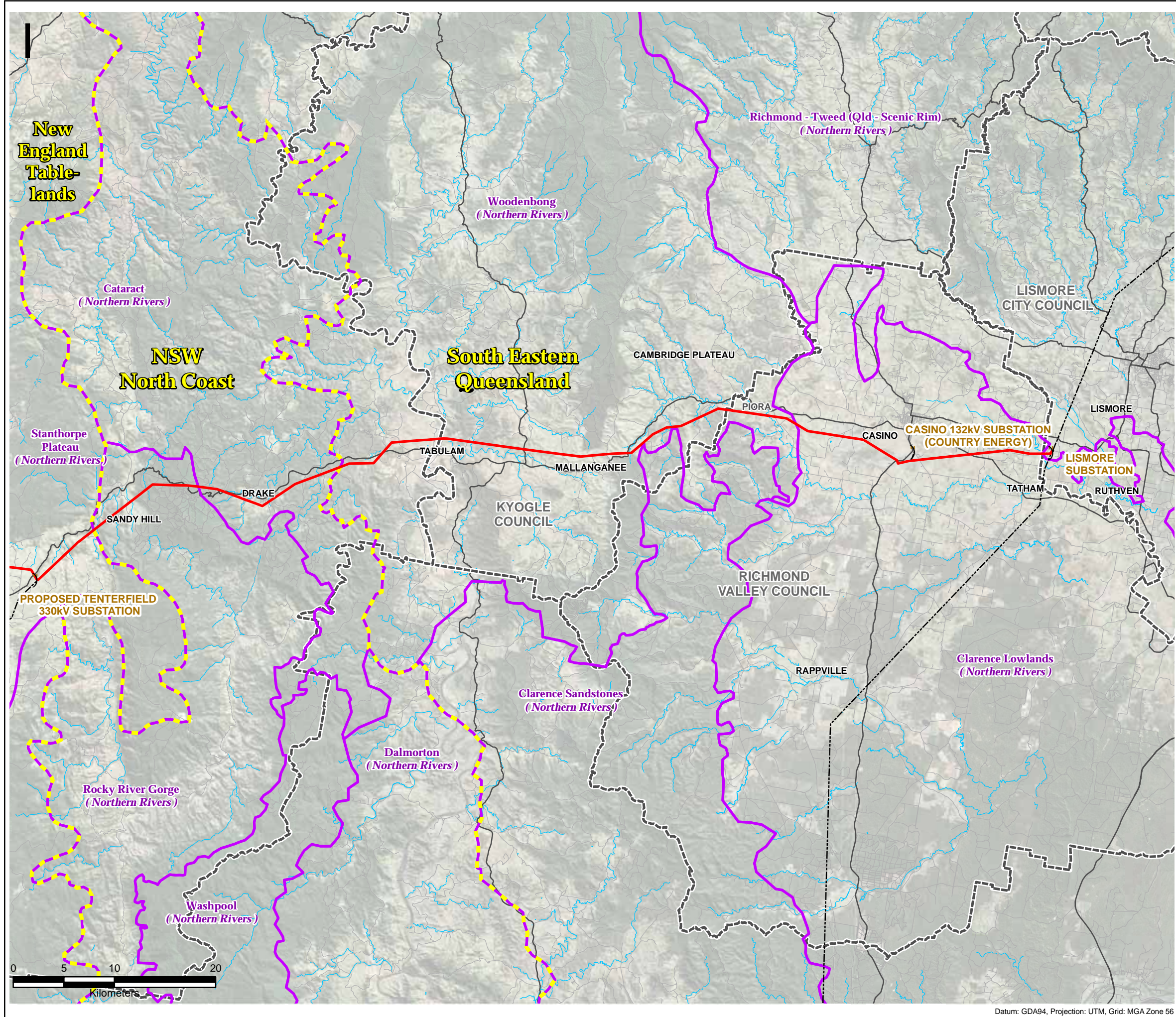
Source: Aerial Imagery from Microsoft © Bing Maps  
^ Transgrid 2010  
\* Interim Biogeographical Regionalisation for Australia (IBRA) ver6.1 © Commonwealth of Australia 2005

Drawn: AO/AY	Approved: JW/MB	Date: 13/01/2011
Job No.: 43177662	File No.: 43177662.105.mxd	
Client TransGrid		
Project FAR NORTH NSW (DUMARESQ - LISMORE 330kV TRANSMISSION LINE) PROJECT		
Title LOCAL GOVERNMENT AREAS, CMA SUBREGIONS / REGIONS & AUSTRALIA'S BIOREGIONS (WEST)		
Figure: 2a		

Datum: GDA94, Projection: UTM, Grid: MGA Zone 56



This drawing is subject to COPYRIGHT. It remains the property of URS Australia Pty Ltd.




**LEGEND:**

- Existing Transmission Lines<sup>^</sup>
- Proposed 330kV Alignment<sup>^</sup>
- ) Substation/Switching Station
- CMA Subregions (Regions)
- Australia's Bioregions (IBRA)\*
- State Border
- Local Government Area
- Roads
- Waterways

Symbols and lines used in this figure are indicative and are not intended to reflect actual size of represented features.  
Symbols and lines have been enhanced to aid visibility.

Source: Aerial Imagery from Microsoft © Bing Maps  
<sup>^</sup> Transgrid 2010  
\* Interim Biogeographical Regionalisation for Australia (IBRA) ver6.1 © Commonwealth of Australia 2005

Drawn: AO/AY	Approved: JW/MB	Date: 13/01/2011
Job No.: 43177662		File No.: 43177662.105.mxd
Client TransGrid		
Project FAR NORTH NSW (DUMARESQ - LISMORE 330kV TRANSMISSION LINE) PROJECT		
Title LOCAL GOVERNMENT AREAS, CMA SUBREGIONS / REGIONS & AUSTRALIA'S BIOREGIONS (EAST)		
Figure: 2b		
		

Datum: GDA94, Projection: UTM, Grid: MGA Zone 56