

LEGEND:
----- Existing Transmission Lines^
----- Proposed 330kV Alignment^
Substation/Switching Station
State Border
Local Government Area
Roads
Waterways

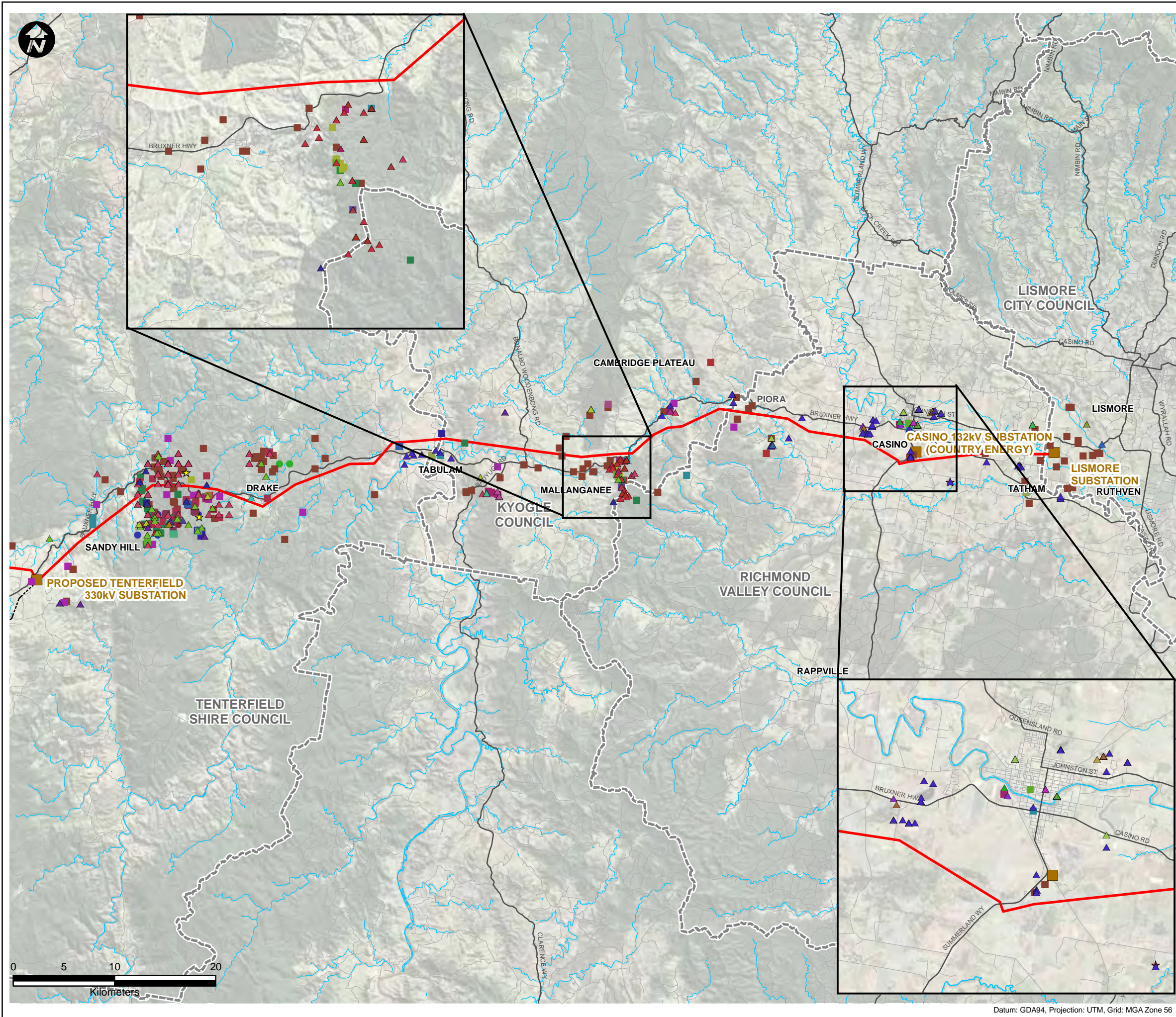
Threatened Fauna:
Aves
▲ Barred Cuckoo-shrike
▲ Black Bittern
▲ Black-necked Stork
▲ Black-tailed Godwit
▲ Blue-billed Duck
▲ Brown Treecreeper
▲ Brown Treecreeper*
▲ Bush Stone-curlew
▲ Comb-crested Jacana
▲ Diamond Firetail
▲ Freckled Duck
▲ Glossy Black-Cockatoo
▲ Grass Owl
▲ Grey-crowned Babbler*
▲ Hooded Robin
▲ Little Eagle
▲ Little Lorikeet
▲ Magpie Goose
▲ Marbled Frogmouth
▲ Masked Owl
▲ Painted Honeyeater
▲ Powerful Owl
▲ Red-backed Button-quail
▲ Red-tailed Tropicbird
▲ Regent Honeyeater
▲ Rose-crowned Fruit-Dove
▲ Scarlet Robin
▲ Sooty Owl
▲ Speckled Warbler
▲ Spotted Harrier
▲ Square-tailed Kite
▲ Turquoise Parrot
▲ Varied Sittella
▲ Wompoo Fruit-Dove
Amphibia
● Philoria pughii
● Giant Barred Frog
● Stuttering Frog
Mammalia
■ Beccari's Freetail-bat
■ Black-striped Wallaby
■ Brush-tailed Phascogale
■ Brush-tailed Rock-wallaby
■ Common Planigale
■ Eastern Bentwing-bat
■ Eastern Cave Bat
■ Eastern False Pipistrelle
■ Golden-tipped Bat
■ Greater Broad-nosed Bat
■ Greater Long-eared Bat
■ Grey-headed Flying-fox
■ Hoary Wattled Bat
■ Koala
■ Little Bentwing-bat
■ Parma Wallaby
■ Red-legged Pademelon
■ Rufous Bettong
■ Southern Myotis
■ Spotted-tailed Quoll
■ Squirrel Glider
■ Yellow-bellied Glider
Reptilia
★ Border Thick-tailed Gecko
★ Stephens' Banded Snake
★ White-crowned Snake
*eastern subspecies

Symbols and lines used in this figure are indicative and are not intended to reflect actual size of represented features.
Symbols and lines have been enhanced to aid visibility.

Source: Aerial Imagery from Microsoft © Bing Maps
^ Transgrid 2010

Drawn: AO/SB	Approved: JW/MB	Date: 07/12/2010
Job No.: 43177662	File No.: 43177662.074.mxd	
Client TransGrid		
Project FAR NORTH NSW (DUMARESQ - LISMORE 330kV TRANSMISSION LINE) PROJECT		
Title THREATENED FAUNA DECCW RECORDS (WEST)		
Figure: 5a		
URS		

Datum: GDA94, Projection: UTM, Grid: MGA Zone 56



LEGEND:

- Existing Transmission Lines^
- Proposed 330kV Alignment^
- Substation/Switching Station
- State Border
- Local Government Area
- Roads
- Waterways

Threatened Fauna:

Aves

- Barred Cuckoo-shrike
- Black Bittern
- Black-necked Stork
- Black-tailed Godwit
- Blue-billed Duck
- Brown Treecreeper
- Brown Treecreeper*
- Bush Stone-curlew
- Comb-crested Jacana
- Diamond Firetail
- Freckled Duck
- Glossy Black-Cockatoo
- Grass Owl
- Grey-crowned Babbler*
- Hooded Robin
- Little Eagle
- Little Lorikeet
- Maggie Goose
- Marbled Frogmouth
- Masked Owl
- Painted Honeyeater
- Powerful Owl
- Red-backed Button-quail
- Red-tailed Tropicbird
- Regent Honeyeater
- Rose-crowned Fruit-Dove
- Scarlet Robin
- Sooty Owl
- Speckled Warbler
- Spotted Harrier
- Square-tailed Kite
- Turquoise Parrot
- Varied Sittella
- Wompoo Fruit-Dove

Amphibia

- Philoria pughi
- Giant Barred Frog
- Stuttering Frog

Mammalia

- Beccari's Freetail-bat
- Black-striped Wallaby
- Brush-tailed Phascogale
- Brush-tailed Rock-wallaby
- Common Planigale
- Eastern Bentwing-bat
- Eastern Cave Bat
- Eastern False Pipistrelle
- Golden-tipped Bat
- Greater Broad-nosed Bat
- Greater Long-eared Bat
- Grey-headed Flying-fox
- Hoary Wattleed Bat
- Koala
- Little Bentwing-bat
- Parma Wallaby
- Red-legged Pademelon
- Rufous Bettong
- Southern Myotis
- Spotted-tailed Quoll
- Squirrel Glider
- Yellow-bellied Glider

Reptilia

- Border Thick-tailed Gecko
- Stephens' Banded Snake
- White-crowned Snake

*eastern subspecies

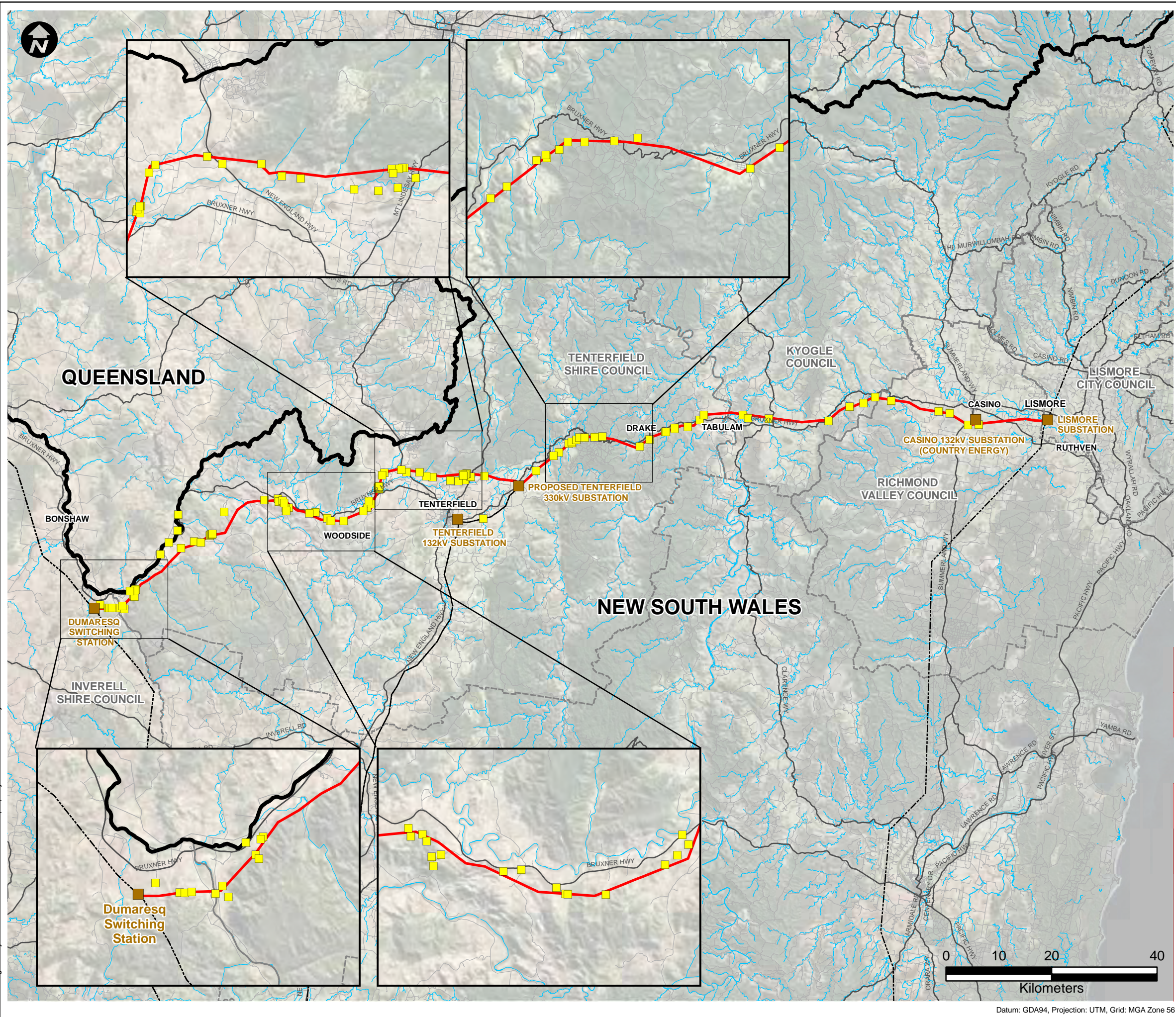
Symbols and lines used in this figure are indicative and are not intended to reflect actual size of represented features. Symbols and lines have been enhanced to aid visibility.

Source: Aerial Imagery from Microsoft © Bing Maps
^ Transgrid 2010

Drawn: AO/SB	Approved: JW/MB	Date: 07/12/2010
Job No.: 43177662	File No.: 43177662.106.mxd	
Client TransGrid		
Project FAR NORTH NSW (DUMARESQ - LISMORE 330kV TRANSMISSION LINE) PROJECT		
Title THREATENED FAUNA DECCW RECORDS (EAST)		
Figure: 5b		

Datum: GDA94, Projection: UTM, Grid: MGA Zone 56

This drawing is subject to COPYRIGHT. It remains the property of URS Australia Pty Ltd.



LEGEND:

- Existing Transmission Lines[^]
- Proposed 330kV Alignment[^]
- Substation/Switching Station
- ▭ State Border
- ▭ Local Government Area
- Roads
- Waterways
- Vegetation Quadrat & Habitat Assessment Locations

Symbols and lines used in this figure are indicative and are not intended to reflect actual size of represented features.
Symbols and lines have been enhanced to aid visibility.

Source: Aerial Imagery from © Microsoft Bing Maps 2010
[^] Transgrid 2010

Drawn: AO/SB	Approved: MB/JW	Date: 07/12/2010
Job No.: 43177662	File No.: 43177662.075.mxd	
Client TransGrid		
Project FAR NORTH NSW (DUMARESQ - LISMORE 330kV TRANSMISSION LINE) PROJECT		
Title VEGETATION & HABITAT ASSESSMENT SURVEY SITES		
Figure: 6a		

Datum: GDA94, Projection: UTM, Grid: MGA Zone 56