

This drawing is subject to COPYRIGHT. It remains the property of TransGrid.



LEGEND:

- Existing 96L 132kV Structures Locations^
- Existing Transmission Lines^
- Proposed 330kV Angle Position (Indicative)^
- Proposed 330kV Structure Locations (Indicative)^
- Proposed 330kV Alignment
- Proposed 330kV Easement
- Substation/Switching Station
- Roads and Firetrails
- Waterways
- Access Tracks
 - Category 1
 - Category 2
 - Category 3

Vegetation Formations and Communities

- TSC Act Listed Vegetation Community
- EPBC Act Listed Vegetation Community
- Dry Sclerophyll Forest (shrub/grass)**
 - Grey Gum/Grey Ironbark Open Forest, (GG)
 - New England Stringbark/Peppermint/Grey Ironbark/Grey Gum Open Forest, Intergrades, (NESP GG)
 - Spotted Gum/Grey Box/Grey Ironbark Open Forest, (SGG)
 - Spotted Gum/Grey Ironbark/Dry Open Forest, (SG)
 - Spotted Gum/Grey Ironbark/Narrow-leaved Ironbark Open Forest, (SGN)
 - Spotted Gum/Grey Ironbark/Pink Bloodwood Open Forest, (SGP)
 - Spotted Gum/Grey Ironbark/Thin-leaved Stringbark Dry Open Forest, (SGT)
- Forested Wetland**
 - Swamp Box Swamp Forest, Disturbed, (Sd)
 - Water Gum/Forest Red Gum Riparian Woodland, (W)
- Grassy Woodland**
 - Cabbage Gum Grassy Woodland, (CG)
- Wet Sclerophyll Forest**
 - Spotted Gum/Brush Box Moist Forest, (SB)
- Aquatic Ecological Community**
 - Aquatic Ecological Community of the Lowland Catchment of the Darling River (FM Act)

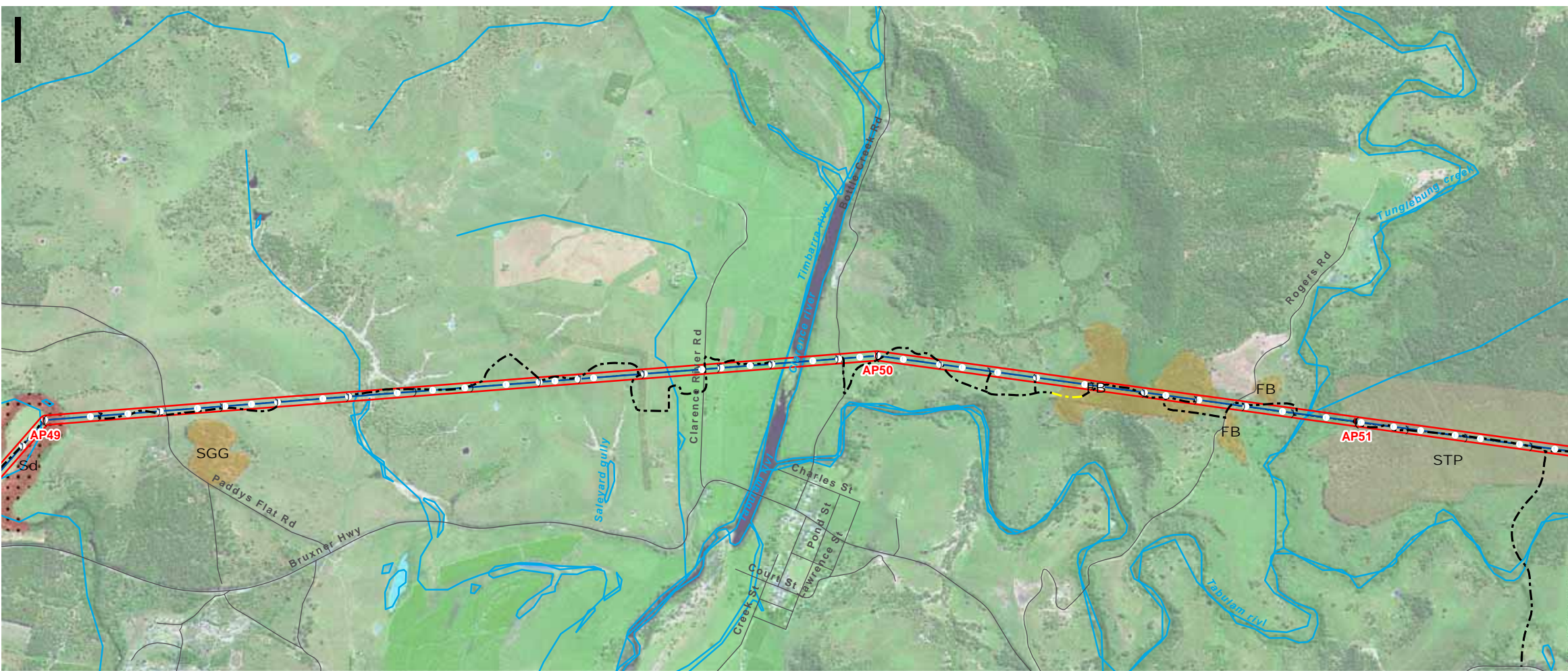
Symbols and lines used in this figure are indicative and are not intended to reflect actual size of represented features. Symbols and lines have been enhanced to aid visibility.

Source: Aerial Imagery from TransGrid 2009
^ TransGrid 2010

Drawn: AO/SB	Approved: JM	Date: 25/05/2011
Job No.: 43177662	File No.: 43177662.085i.mxd	
Client	TransGrid	
Project	FAR NORTH NSW (DUMARESQ - LISMORE 330kV TRANSMISSION LINE) PROJECT	
Title	NATIVE VEGETATION COMMUNITIES	
Figure:	7i	

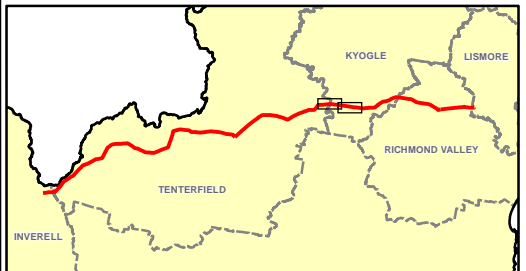
Datum: GDA94, Projection: UTM, Grid: MGA Zone 56

This drawing is subject to COPYRIGHT. It remains the property of TransGrid.




LEGEND:

- Existing 96L 132kV Structures Locations^
- Existing Transmission Lines^
- Proposed 330kV Angle Position (Indicative)^
- Proposed 330kV Structure Locations (Indicative)^
- Proposed 330kV Alignment
- Proposed 330kV Easement
- Substation/Switching Station
- Roads and Firetrails
- Waterways
- Access Tracks
 - Category 1
 - Category 2
 - Category 3
- Vegetation Formations and Communities**
 - TSC Act Listed Vegetation Community
 - EPBC Act Listed Vegetation Community
 - Dry Sclerophyll Forest (shrub/grass)**
 - Forest Red Gum Grassy Open Forest, (F)
 - Forest Red Gum/Broad-leaved Apple Dry Open Forest, (FB)
 - Narrow-leaved Ironbark Dry Open Forest, (N)
 - Spotted Gum/Grey Box/Grey Ironbark Open Forest, (SGG)
 - Spotted Gum/Thin-leaved Stringbark/Pink Bloodwood Open Forest, (STP)
 - Forested Wetland**
 - Swamp Box Swamp Forest, Disturbed, (Sd)
 - Aquatic Ecological Community**
 - Aquatic Ecological Community of the Lowland Catchment of the Darling River (FM Act)



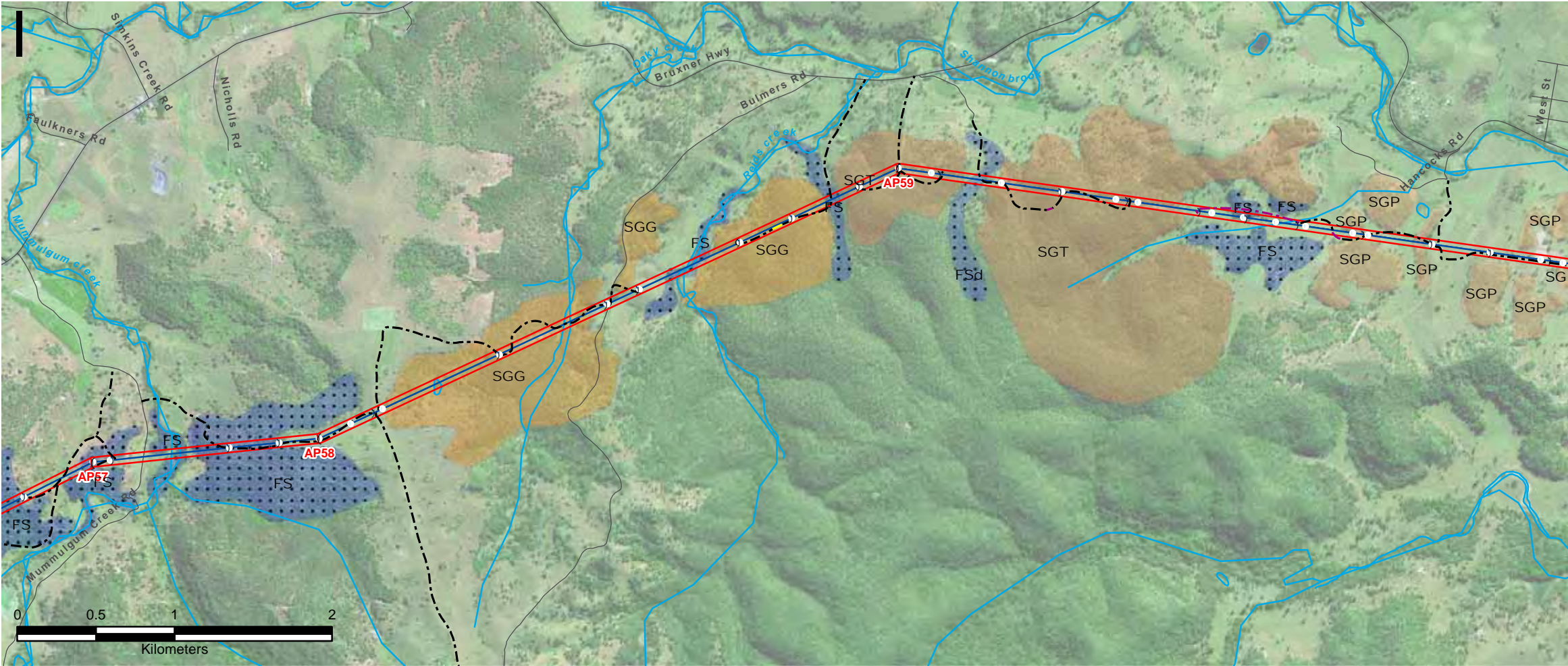
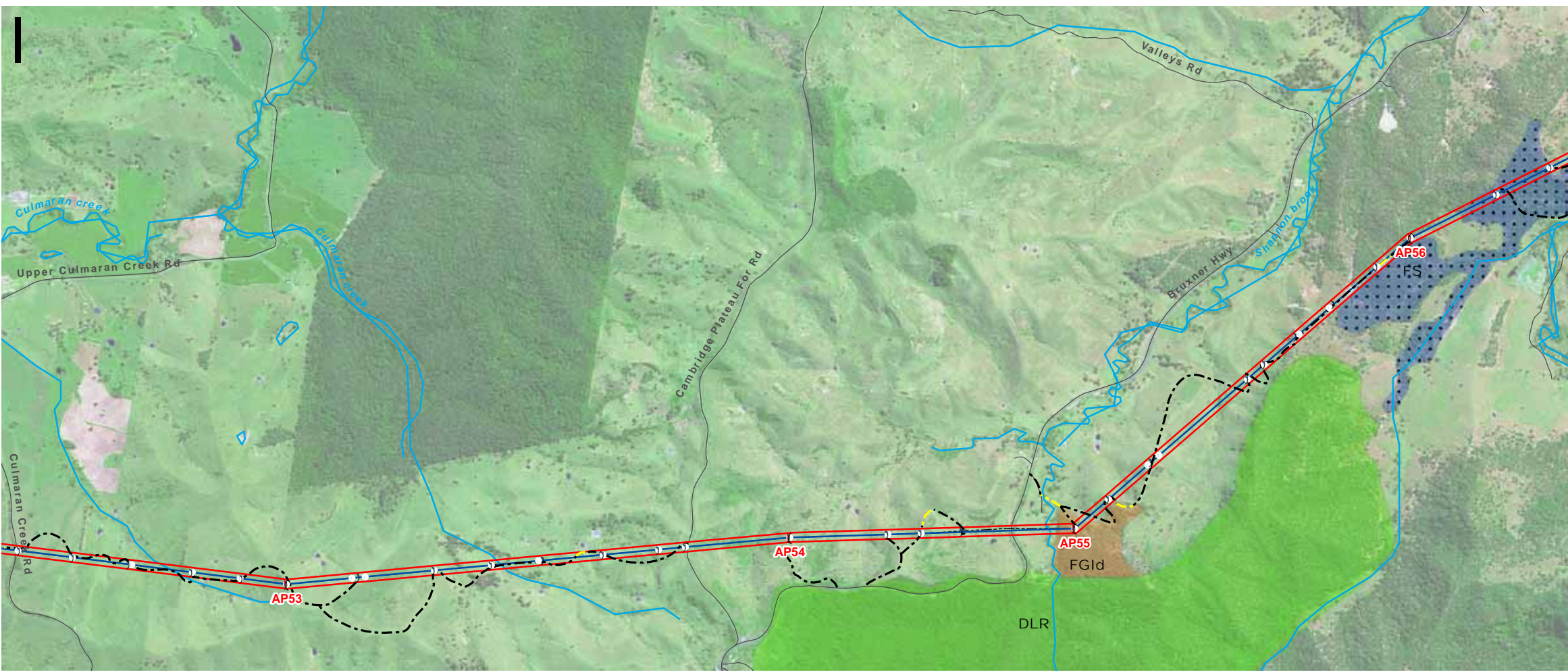
Symbols and lines used in this figure are indicative and are not intended to reflect actual size of represented features. Symbols and lines have been enhanced to aid visibility.

Source: Aerial Imagery from TransGrid 2009
^ TransGrid 2010

Drawn: AO/SB	Approved: JM	Date: 25/05/2011
Job No.: 43177662	File No.: 43177662.085j.mxd	
Client	TransGrid	
Project	FAR NORTH NSW (DUMARESQ - LISMORE 330kV TRANSMISSION LINE) PROJECT	
Title	NATIVE VEGETATION COMMUNITIES	
Figure: 7j		
		

Datum: GDA94, Projection: UTM, Grid: MGA Zone 56

This drawing is subject to COPYRIGHT. It remains the property of TransGrid.



LEGEND:

- Existing 96L 132kV Structures Locations^
- Existing Transmission Lines^
- Proposed 330kV Angle Position (Indicative)^
- Proposed 330kV Structure Locations (Indicative)^
- Proposed 330kV Alignment
- Proposed 330kV Easement
- Substation/Switching Station
- Roads and Firetrails
- Waterways
- Access Tracks
- Category 1
- Category 2
- Category 3

Vegetation Formations and Communities

- TSC Act Listed Vegetation Community
- EPBC Act Listed Vegetation Community

Dry Sclerophyll Forest (shrub/grass)

- Flood Gum/Grey Ironbark Tall Open Forest, Disturbed, (FGId)
- Spotted Gum/Grey Box/Grey Ironbark Open Forest, (SGG)
- Spotted Gum/Grey Ironbark/Pink Bloodwood Open Forest, (SGP)
- Spotted Gum/Grey Ironbark/Thin-leaved Stringbark Dry Open Forest, (SGT)

Grassy Woodland

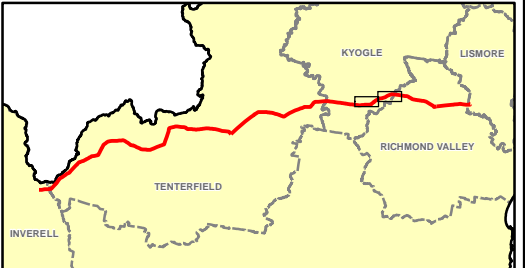
- Forest Red Gum/Swamp Box Open Forest, Disturbed, (FSd)
- Forest Red Gum/Swamp Box Open Forest, (FS)

Rainforest

- Dry Land Rainforest, (DLR)


Aquatic Ecological Community

- Aquatic Ecological Community of the Lowland Catchment of the Darling River (FM Act)



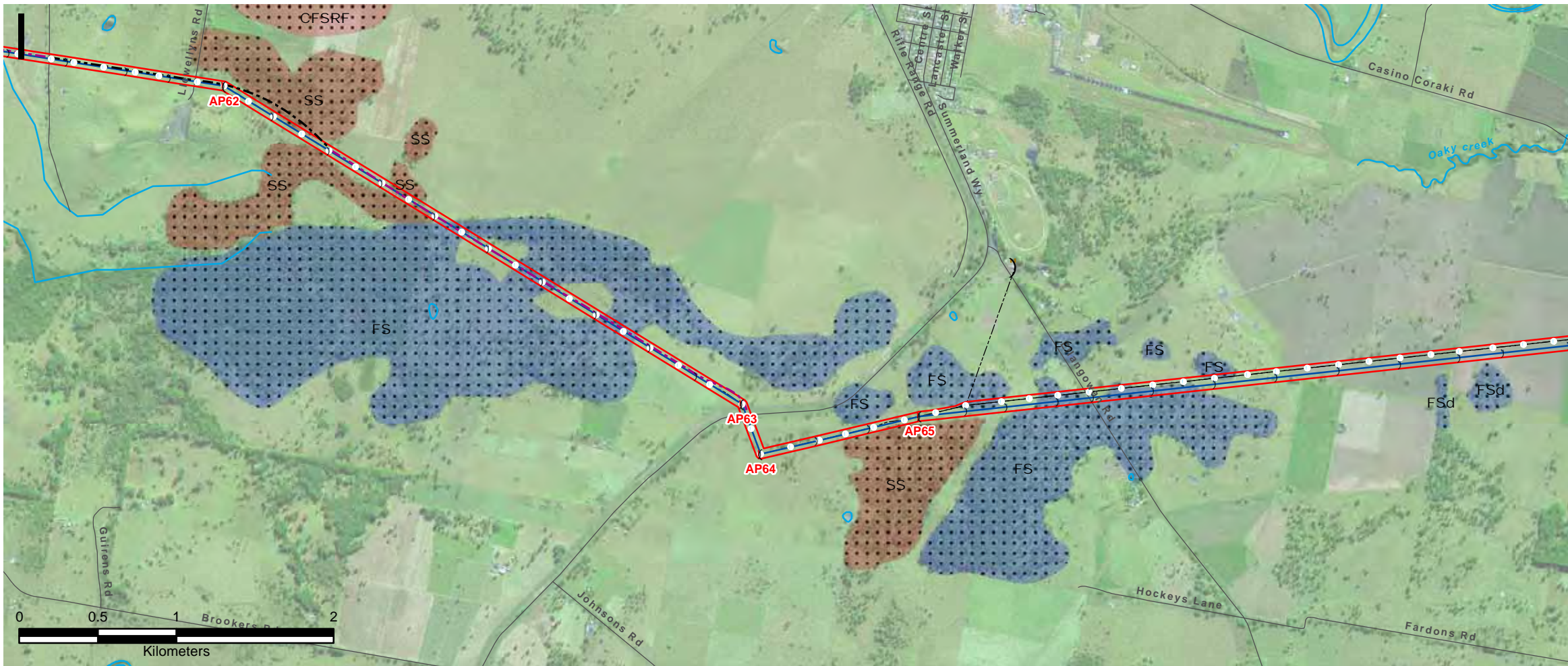
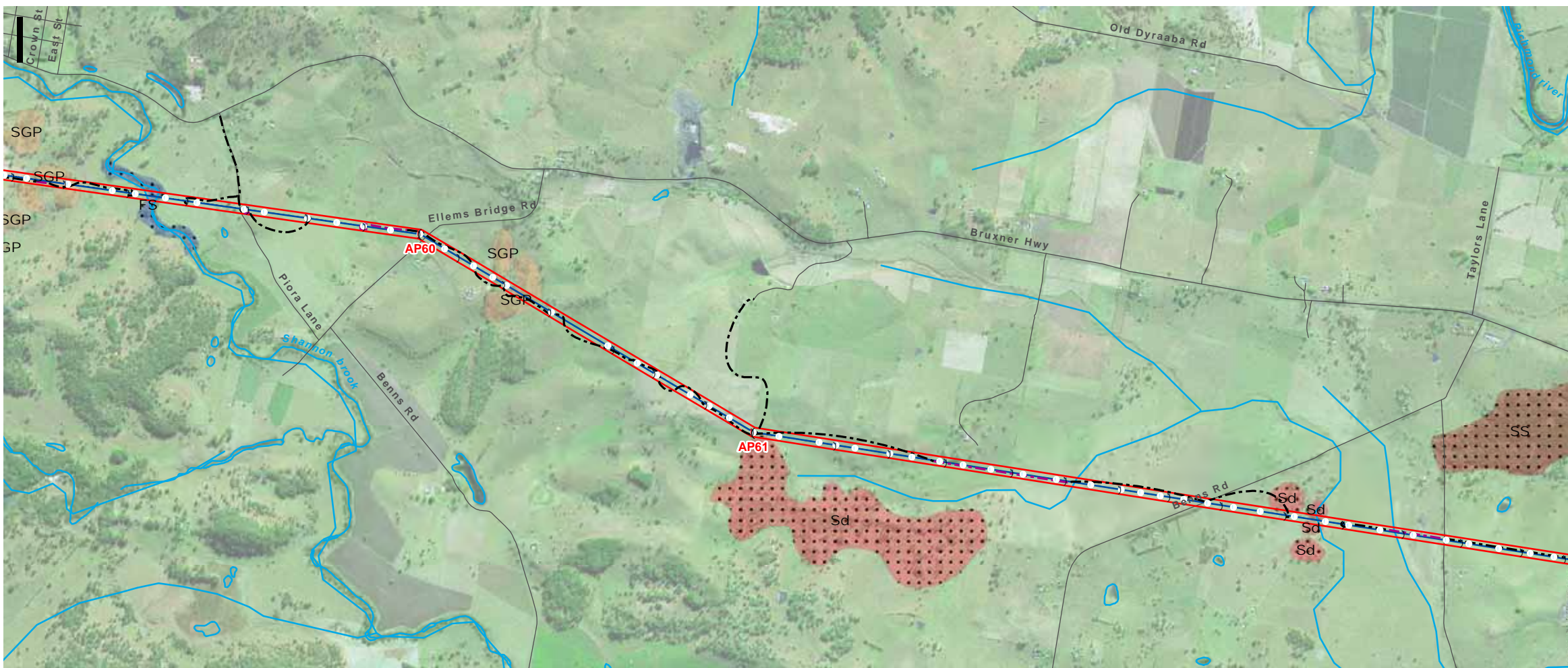
Symbols and lines used in this figure are indicative and are not intended to reflect actual size of represented features. Symbols and lines have been enhanced to aid visibility.

Source: Aerial Imagery from TransGrid 2009
^ TransGrid 2010

Drawn: AO/SB	Approved: JM	Date: 25/05/2011
Job No.: 43177662	File No.: 43177662.085k.mxd	
Client	TransGrid	
Project	FAR NORTH NSW (DUMARESQ - LISMORE 330kV TRANSMISSION LINE) PROJECT	
Title	NATIVE VEGETATION COMMUNITIES	
Figure: 7k		
		

Datum: GDA94, Projection: UTM, Grid: MGA Zone 56

This drawing is subject to COPYRIGHT. It remains the property of TransGrid.



Datum: GDA94, Projection: UTM, Grid: MGA Zone 56

LEGEND:

- Existing 96L 132kV Structures Locations^
- Existing Transmission Lines^
- Proposed 330kV Angle Position (Indicative)^
- Proposed 330kV Structure Locations (Indicative)^
- Proposed 330kV Alignment
- Proposed 330kV Easement
- Substation/Switching Station
- Roads and Firetrails
- Waterways

Access Tracks

- Category 1
- Category 2
- Category 3

Vegetation Formations and Communities

- TSC Act Listed Vegetation Community
- EPBC Act Listed Vegetation Community

Dry Sclerophyll Forest (shrub/grass)

- Spotted Gum/Grey Ironbark/Pink Bloodwood Open Forest, (SGP)

Forested Wetland

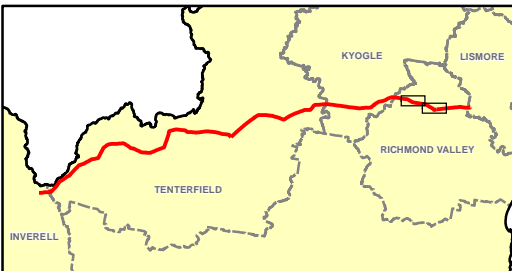
- Coastal Floodplain Sedgelands Rushlands and Forblands, (CFCRF)
- Swamp Box Swamp Forest, Disturbed, (Sd)
- Swamp Box/Swamp Mahogany Swamp Forest, Integrates, (SS)

Grassy Woodland

- Forest Red Gum/Swamp Box Open Forest, Disturbed, (FSd)
- Forest Red Gum/Swamp Box Open Forest, (FS)

Aquatic Ecological Community

- Aquatic Ecological Community of the Lowland Catchment of the Darling River (FM Act)



Symbols and lines used in this figure are indicative and are not intended to reflect actual size of represented features. Symbols and lines have been enhanced to aid visibility.

Source: Aerial Imagery from TransGrid 2009
^ TransGrid 2010

Drawn: AO/SB | Approved: JM | Date: 25/05/2011

Job No.: 43177662 | File No.: 43177662.0851.mxd

Client: TransGrid

Project: FAR NORTH NSW
(DUMARESQ - LISMORE
330kV TRANSMISSION LINE)
PROJECT

Title: NATIVE VEGETATION COMMUNITIES

Figure: 71

URS

This drawing is subject to COPYRIGHT. It remains the property of TransGrid.



LEGEND:

- Existing 96L 132kV Structures Locations^
- Existing Transmission Lines^
- Proposed 330kV Angle Position (Indicative)^
- Proposed 330kV Structure Locations (Indicative)^
- Proposed 330kV Alignment
- Proposed 330kV Easement
- Substation/Switching Station
- Roads and Firetrails
- Waterways
- Access Tracks
 - Category 1
 - Category 2
 - Category 3
- Vegetation Formations and Communities**
 - TSC Act Listed Vegetation Community
 - EPBC Act Listed Vegetation Community
 - Grassy Woodland**
 - Forest Red Gum/Swamp Box Open Forest, Disturbed, (FSd)
 - Aquatic Ecological Community**
 - Aquatic Ecological Community of the Lowland Catchment of the Darling River (FM Act)

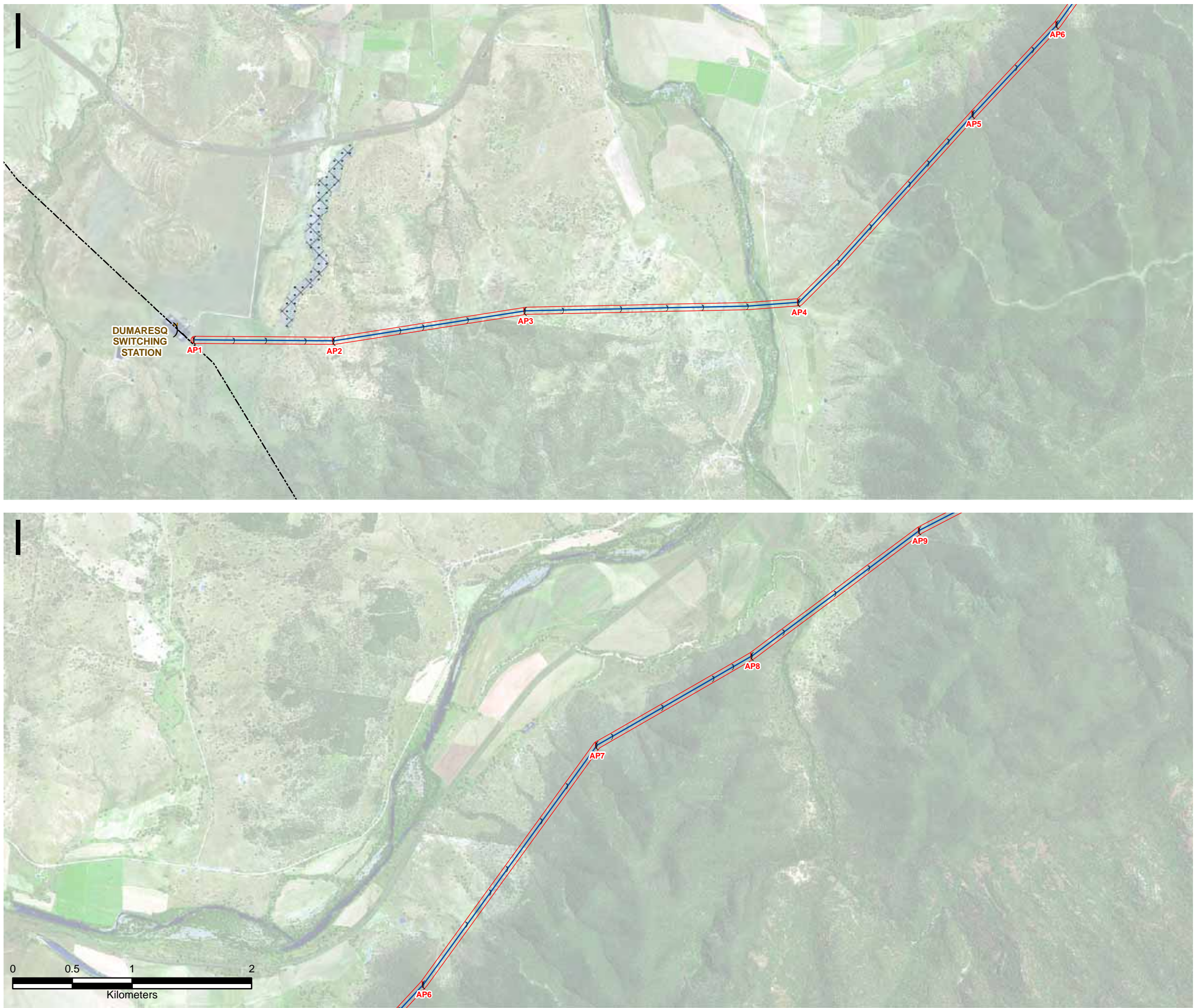
Symbols and lines used in this figure are indicative and are not intended to reflect actual size of represented features. Symbols and lines have been enhanced to aid visibility.

Source: Aerial Imagery from TransGrid 2009
^ TransGrid 2010

Drawn: AO/SB	Approved: JM	Date: 25/05/2011
Job No.: 43177662	File No.: 43177662.085m.mxd	
Client TransGrid		
Project FAR NORTH NSW (DUMARESQ - LISMORE 330kV TRANSMISSION LINE) PROJECT		
Title NATIVE VEGETATION COMMUNITIES		
Figure: 7m		

Datum: GDA94, Projection: UTM, Grid: MGA Zone 56

This drawing is subject to COPYRIGHT. It remains the property of URS Australia Pty Ltd.



LEGEND:

- Existing 96L 132kV Structure Locations^
- Existing Transmission Lines^
- Proposed 330kV Angle Positions ^
- Proposed 330kV Structure Locations^
- Proposed 330kV Centreline^
- Proposed 330kV Easement^
- Substation/Switching Station
- Roads and Firetrails
- Waterways
- Threatened Ecological Communities
 - TSC Act Listed Community
 - EPBC Act Listed Community
 - Box Gum Woodland
- Aquatic Ecological Community
 - Aquatic Ecological Community of the Lowland Catchment of the Darling River (FM Act)

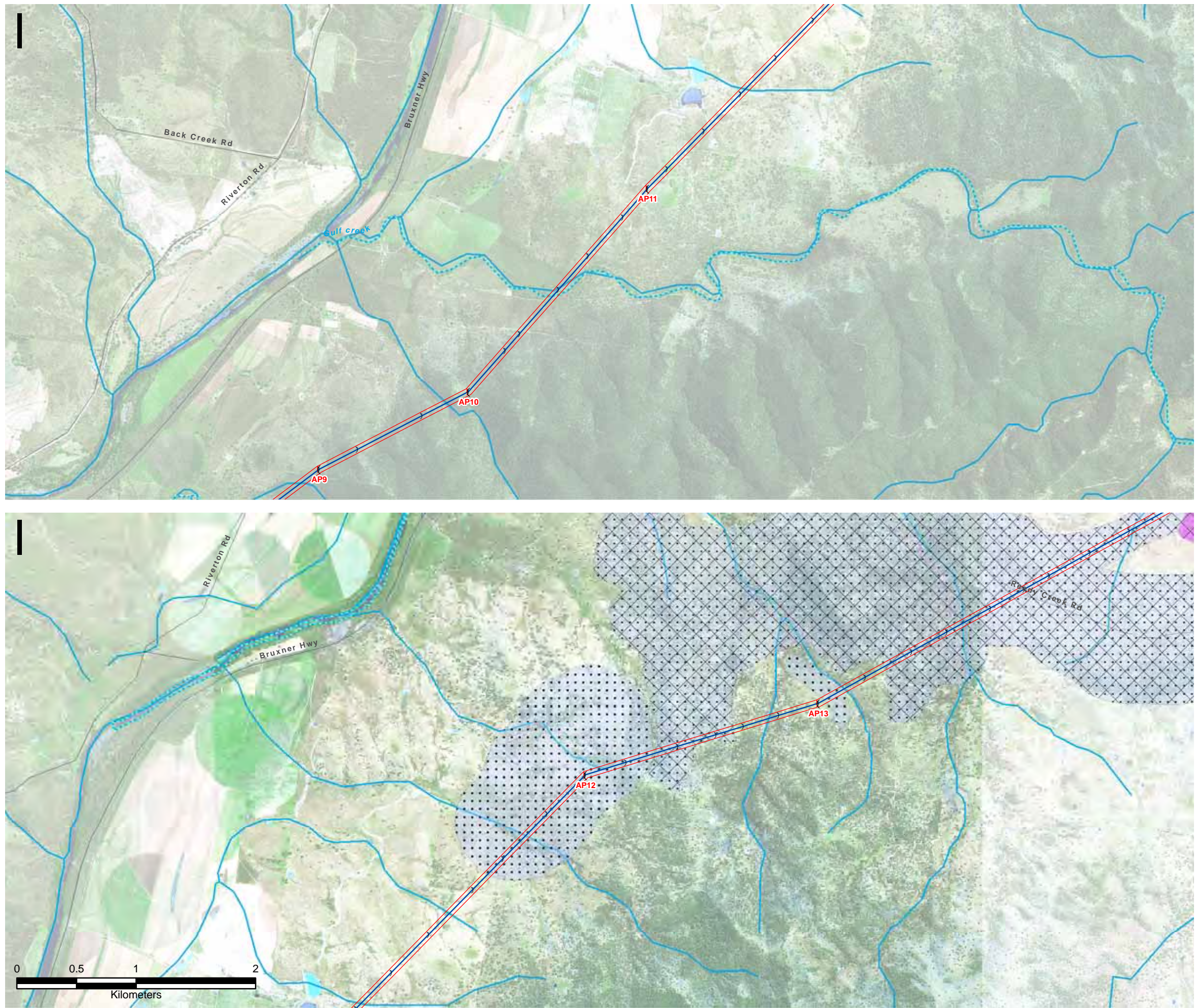
Symbols and lines used in this figure are indicative and are not intended to reflect actual size of represented features. Symbols and lines have been enhanced to aid visibility.

Source: Aerial Imagery from Transgrid 2009,
^ Transgrid 2010

Drawn: AO/SB	Approved: JW/MB	Date: 14/01/2011
Job No.: 43177662	File No.: 43177662.086a.mxd	
Client TransGrid		
Project FAR NORTH NSW (DUMARESQ - LISMORE 330kV TRANSMISSION LINE) PROJECT		
Title THREATENED ECOLOGICAL COMMUNITIES		
Figure: 8a		

Datum: GDA94, Projection: UTM, Grid: MGA Zone 56

This drawing is subject to COPYRIGHT. It remains the property of URS Australia Pty Ltd.



LEGEND:

- Existing 96L 132kV Structure Locations^
- Existing Transmission Lines^
- Proposed 330kV Angle Positions (Indicative)^
- Proposed 330kV Structure Locations (Indicative)^
- Proposed 330kV Centreline^
- Proposed 330kV Easement^
- Substation/Switching Station
- Roads and Firetrails
- Waterways

Threatened Ecological Communities

- TSC Act Listed Community
- EPBC Act Listed Community
- Box Gum Woodland
- Natural Grasslands on Basalt and Fine Textured Alluvial Soils

Aquatic Ecological Community

- Aquatic Ecological Community of the Lowland Catchment of the Darling River (FM Act)

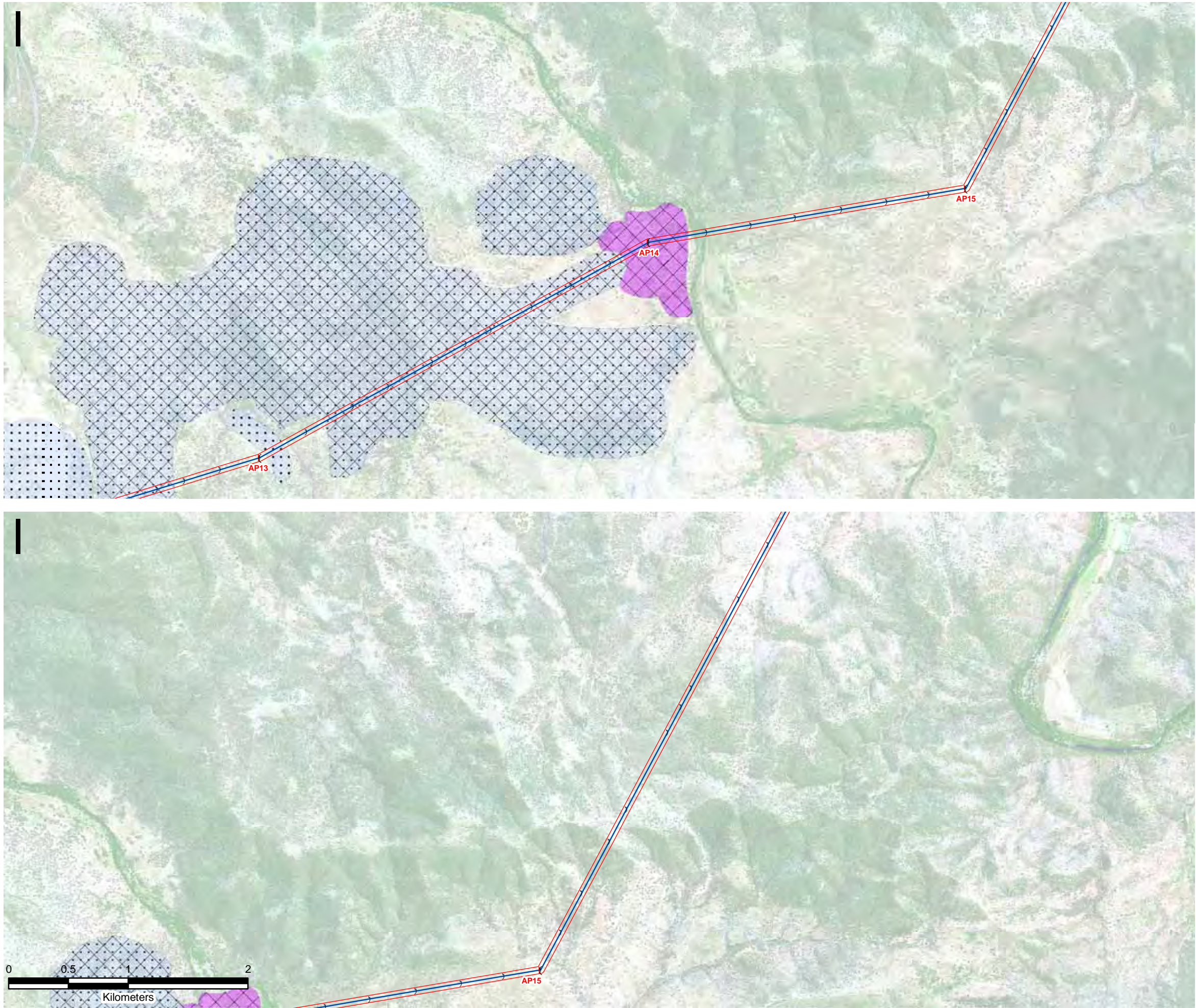
Symbols and lines used in this figure are indicative and are not intended to reflect actual size of represented features. Symbols and lines have been enhanced to aid visibility.

Source: Aerial Imagery from Transgrid 2009,
^ Transgrid 2010

Drawn: AO/SB	Approved: JW/MB	Date: 14/01/2011
Job No.: 43177662	File No.: 43177662.086b.mxd	
Client TransGrid		
Project FAR NORTH NSW (DUMARESQ - LISMORE 330kV TRANSMISSION LINE) PROJECT		
Title THREATENED ECOLOGICAL COMMUNITIES		
Figure: 8b		

Datum: GDA94, Projection: UTM, Grid: MGA Zone 56

This drawing is subject to COPYRIGHT. It remains the property of URS Australia Pty Ltd.



LEGEND:

- Existing 96L 132kV Structure Locations^
- Existing Transmission Lines^
- Proposed 330kV Angle Positions (Indicative)^
- Proposed 330kV Structure Locations (Indicative)^
- Proposed 330kV Centreline^
- Proposed 330kV Easement^
- Substation/Switching Station
- Roads and Firetrails
- Waterways

Threatened Ecological Communities

- TSC Act Listed Community
- EPBC Act Listed Community
- Box Gum Woodland
- Natural Grasslands on Basalt and Fine Textured Alluvial Soils

Aquatic Ecological Community

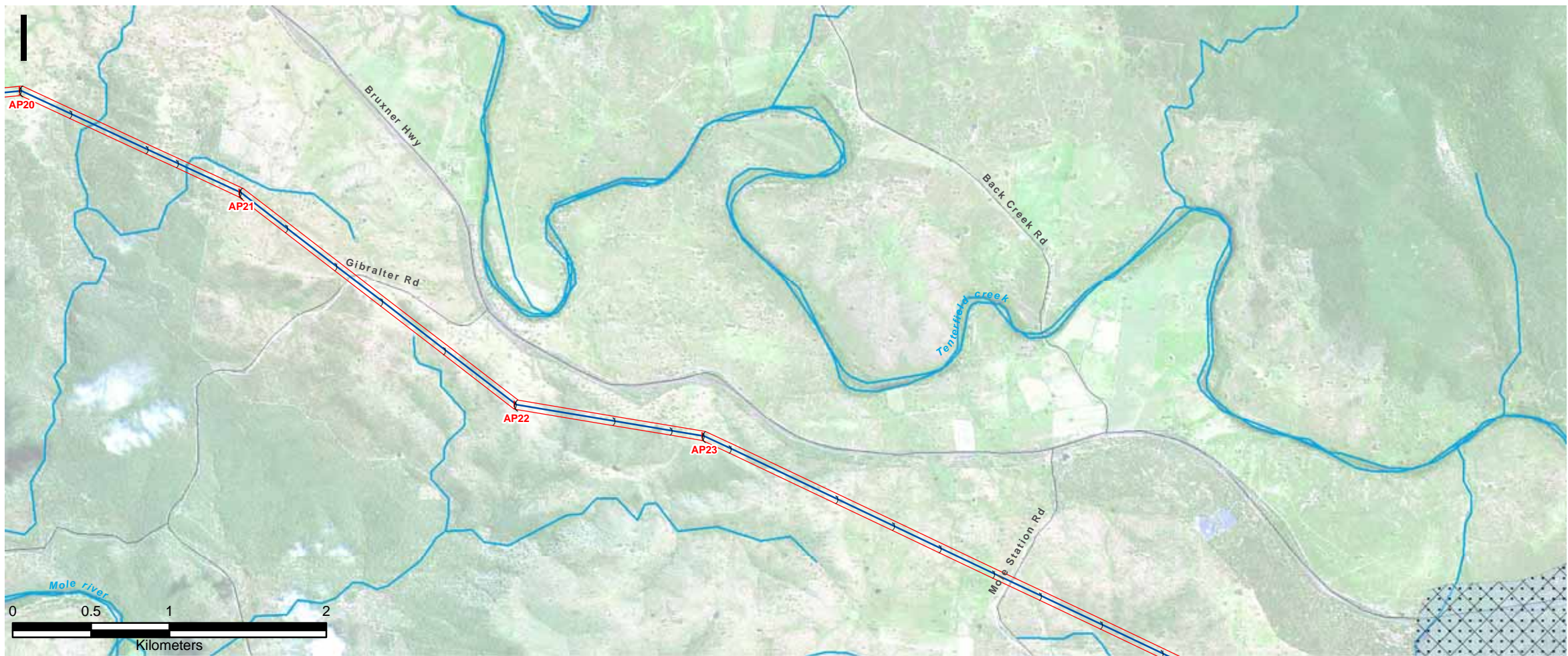
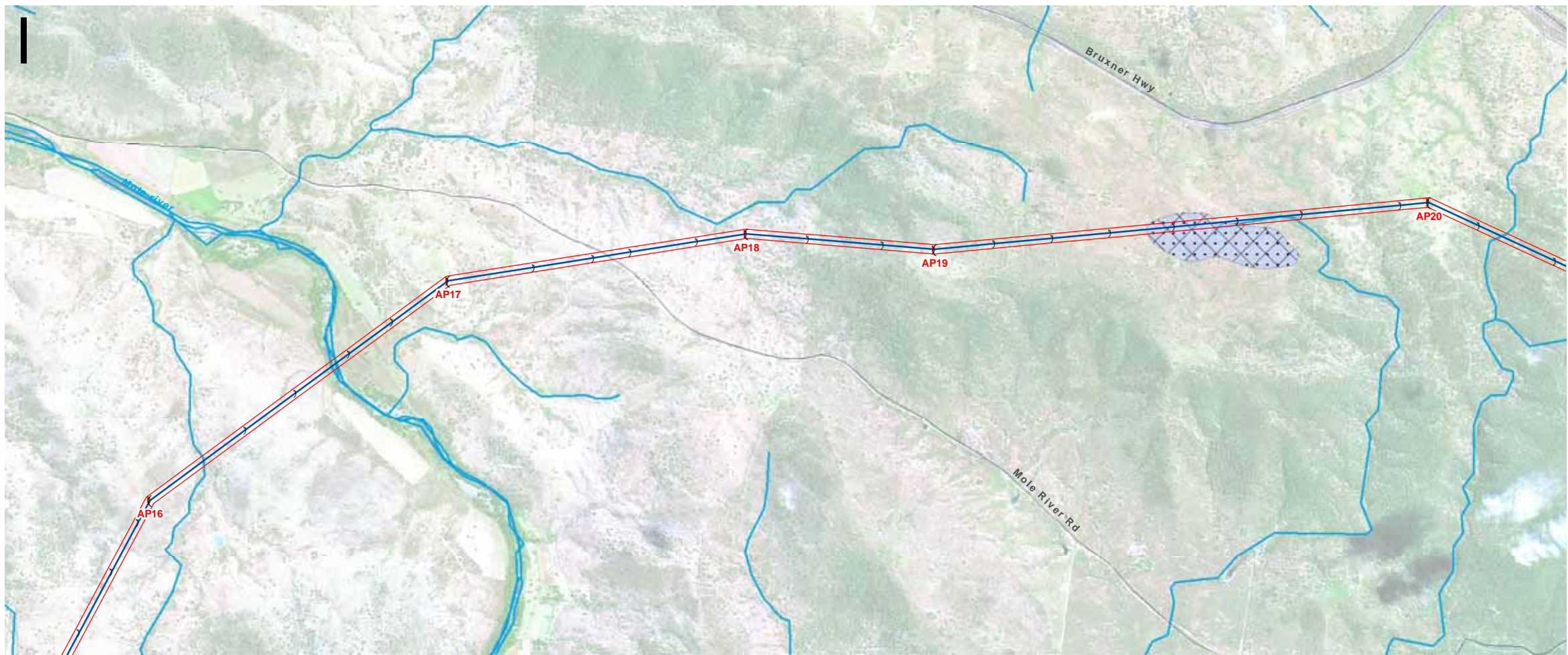
- Aquatic Ecological Community of the Lowland Catchment of the Darling River (FM Act)

Symbols and lines used in this figure are indicative and are not intended to reflect actual size of represented features. Symbols and lines have been enhanced to aid visibility.

Source: Aerial Imagery from Transgrid 2009,
^ Transgrid 2010

Drawn: AO/SB	Approved: JW/MB	Date: 14/01/2011
Job No.: 43177662	File No.: 43177662.086c.mxd	
Client TransGrid		
Project FAR NORTH NSW (DUMARESQ - LISMORE 330kV TRANSMISSION LINE) PROJECT		
Title THREATENED ECOLOGICAL COMMUNITIES		
Figure: 8c		

This drawing is subject to COPYRIGHT. It remains the property of URS Australia Pty Ltd.



LEGEND:

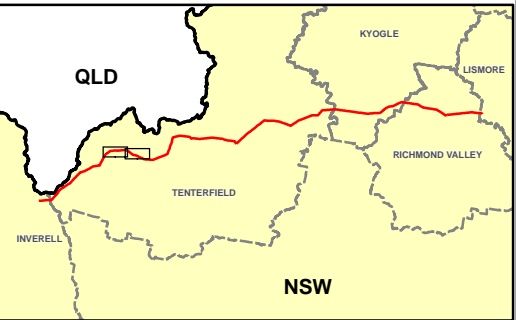
- Existing 96L 132kV Structure Locations^
- Existing Transmission Lines^
- Proposed 330kV Angle Positions (Indicative)^
- Proposed 330kV Structure Locations (Indicative)^
- Proposed 330kV Centreline^
- Proposed 330kV Easement^
- Substation/Switching Station
- Roads and Firetrails
- Waterways

Threatened Ecological Communities

- TSC Act Listed Community
- EPBC Act Listed Community
- Box Gum Woodland


Aquatic Ecological Community

- Aquatic Ecological Community of the Lowland Catchment of the Darling River (FM Act)

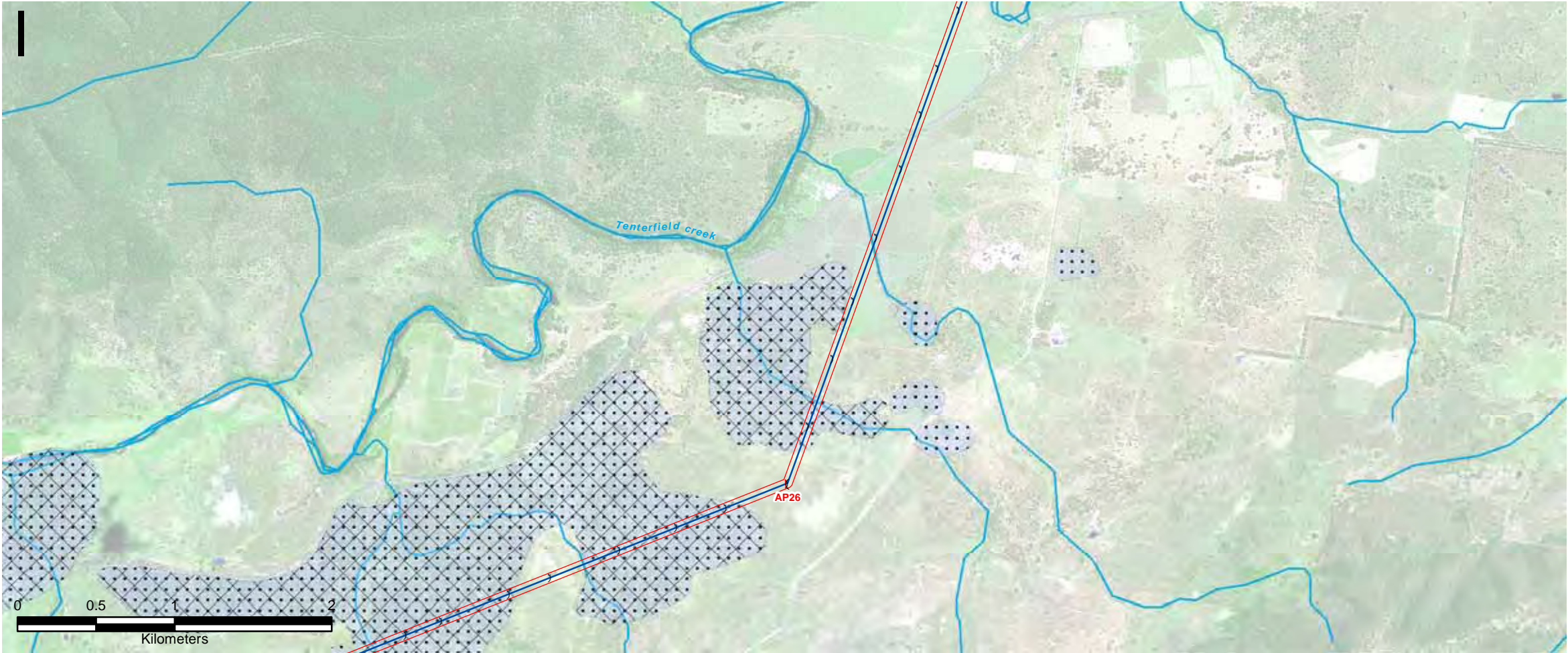


Symbols and lines used in this figure are indicative and are not intended to reflect actual size of represented features. Symbols and lines have been enhanced to aid visibility.

Source: Aerial Imagery from Transgrid 2009,
^ Transgrid 2010

Drawn: AO/SB	Approved: JW/MB	Date: 17/01/2011
Job No.: 43177662		File No.: 43177662.086d.mxd
Client TransGrid		
Project FAR NORTH NSW (DUMARESQ - LISMORE 330kV TRANSMISSION LINE) PROJECT		
Title THREATENED ECOLOGICAL COMMUNITIES		
Figure: 8d		
		

This drawing is subject to COPYRIGHT. It remains the property of TransGrid.



LEGEND:

- Existing 96L 132kV Structure Locations^
- Existing Transmission Lines^
- Proposed 330kV Angle Positions (Indicative)^
- Proposed 330kV Structure Locations (Indicative)^
- Proposed 330kV Centreline^
- Proposed 330kV Easement^
- Substation/Switching Station
- Roads and Firetrails
- Waterways

Threatened Ecological Communities

- TSC Act Listed Community
- EPBC Act Listed Community
- Box Gum Woodland

Aquatic Ecological Community

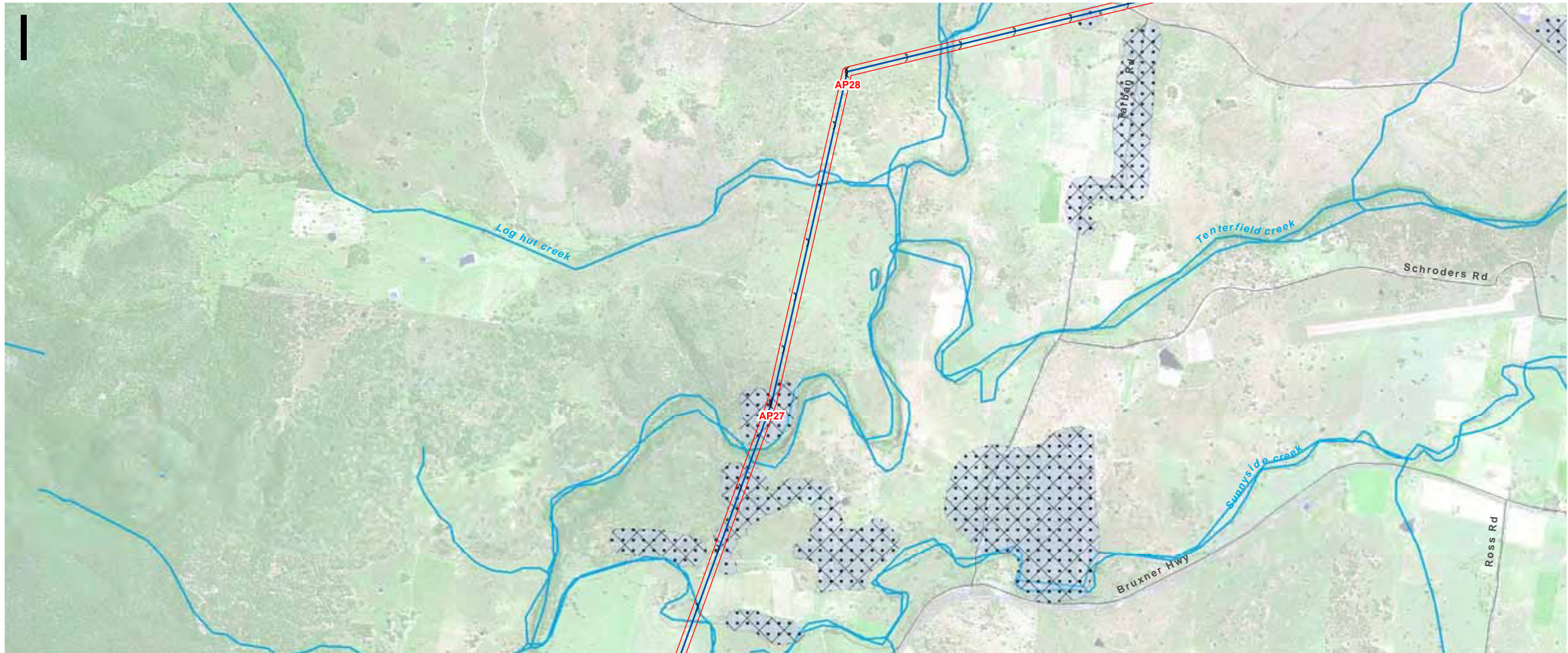
- Aquatic Ecological Community of the Lowland Catchment of the Darling River (FM Act)

Symbols and lines used in this figure are indicative and are not intended to reflect actual size of represented features. Symbols and lines have been enhanced to aid visibility.

Source: Aerial Imagery from TransGrid 2009,
^ TransGrid 2010

Drawn: AO/SB	Approved: JM	Date: 02/06/2011
Job No.: 43177662	File No.: 43177662.086e.mxd	
Client TransGrid		
Project FAR NORTH NSW (DUMARESQ - LISMORE 330kV TRANSMISSION LINE) PROJECT		
Title THREATENED ECOLOGICAL COMMUNITIES		
Figure: 8e		

This drawing is subject to COPYRIGHT. It remains the property of TransGrid.



LEGEND:

- Existing 96L 132kV Structure Locations^
- Existing Transmission Lines^
- Proposed 330kV Angle Positions (Indicative)^
- Proposed 330kV Structure Locations (Indicative)^
- Proposed 330kV Centreline^
- Proposed 330kV Easement^
- Substation/Switching Station
- Roads and Firetrails
- Waterways

Threatened Ecological Communities

- TSC Act Listed Community
- EPBC Act Listed Community
- Box Gum Woodland

Aquatic Ecological Community

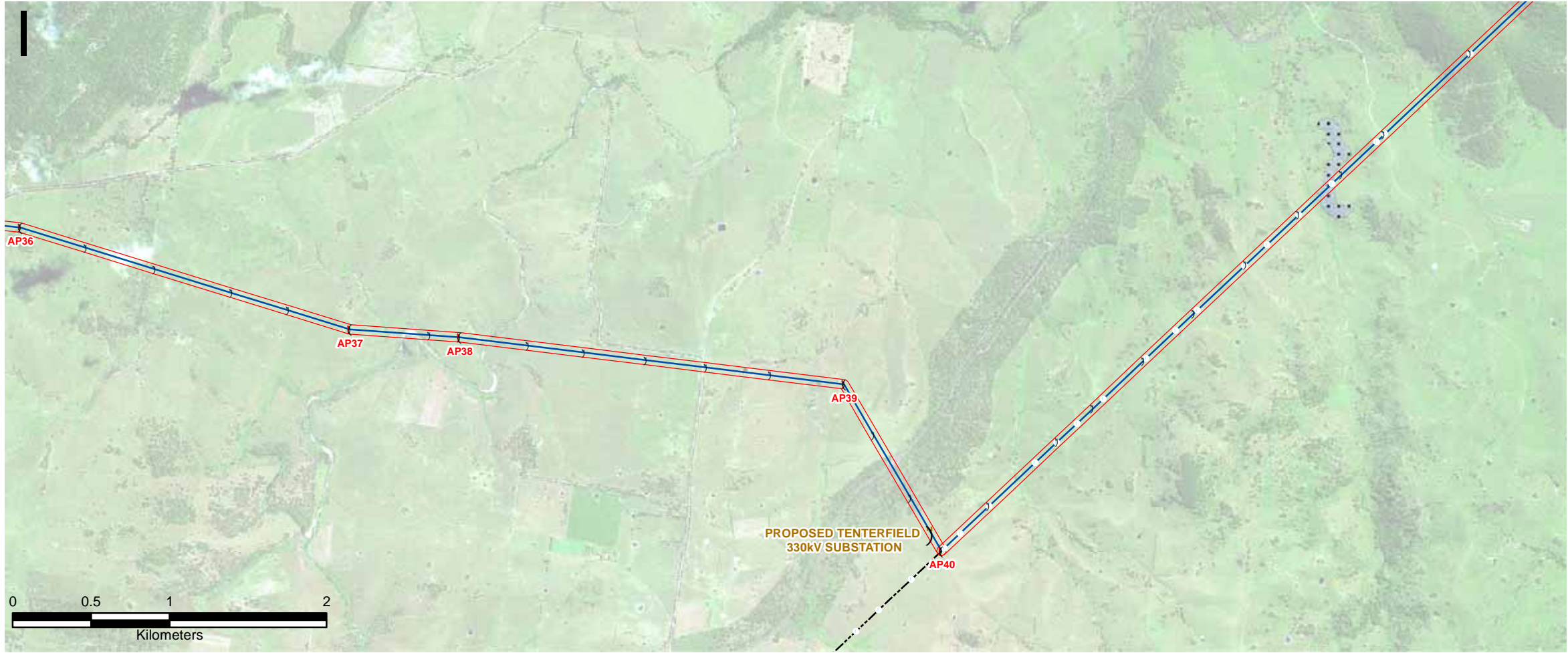
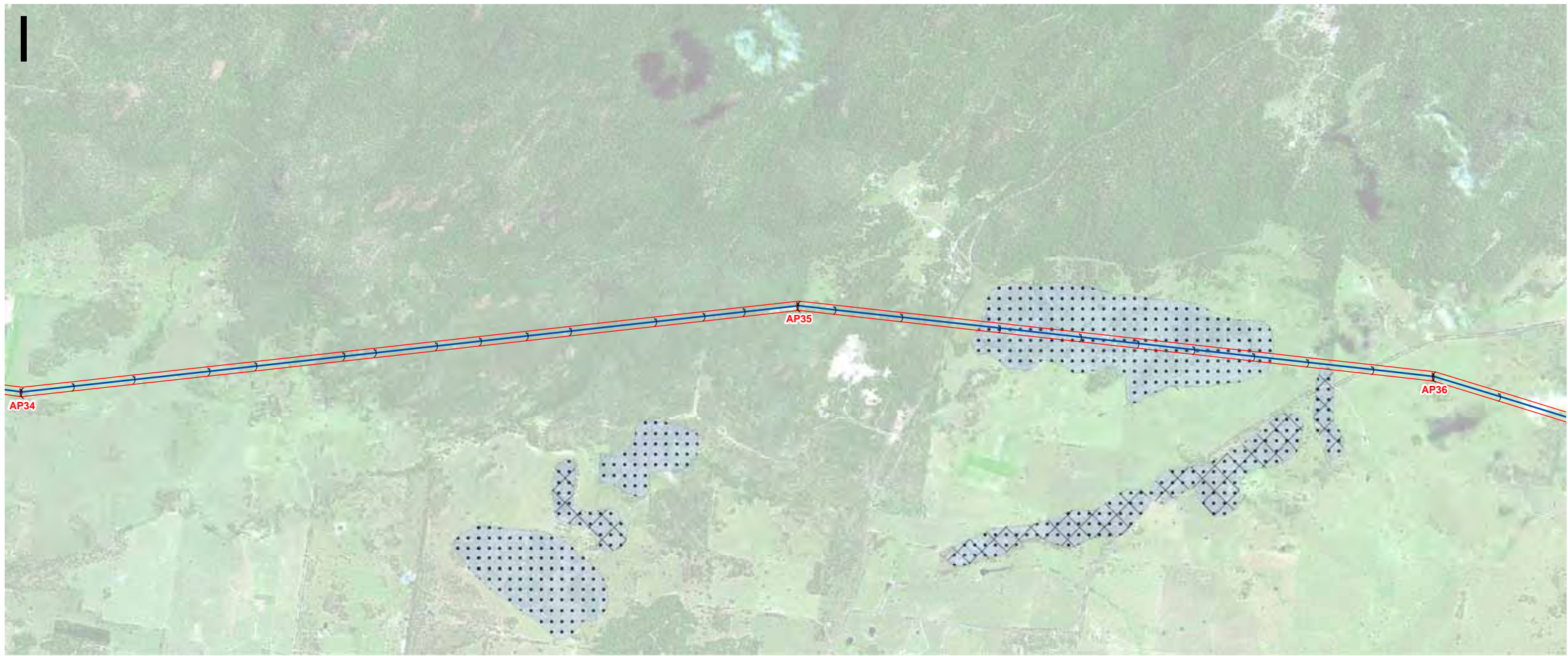
- Aquatic Ecological Community of the Lowland Catchment of the Darling River (FM Act)

Symbols and lines used in this figure are indicative and are not intended to reflect actual size of represented features. Symbols and lines have been enhanced to aid visibility.

Source: Aerial Imagery from TransGrid 2009,
^ TransGrid 2010

Drawn: AO/SB	Approved: JW/MB	Date: 01/06/2011
Job No.: 43177662	File No.: 43177662.086f.mxd	
Client TransGrid		
Project FAR NORTH NSW (DUMARESQ - LISMORE 330kV TRANSMISSION LINE) PROJECT		
Title THREATENED ECOLOGICAL COMMUNITIES		
Figure: 8f		

This drawing is subject to COPYRIGHT. It remains the property of TransGrid.



Datum: GDA94, Projection: UTM, Grid: MGA Zone 56

LEGEND:

- Existing 96L 132kV Structure Locations^
- Existing Transmission Lines^
- Proposed 330kV Angle Positions (Indicative)^
- Proposed 330kV Structure Locations (Indicative)^
- Proposed 330kV Centreline^
- Proposed 330kV Easement^
- Substation/Switching Station
- Roads and Firetrails
- Waterways

Threatened Ecological Communities

- TSC Act Listed Community
- EPBC Act Listed Community
- Box Gum Woodland

Aquatic Ecological Community

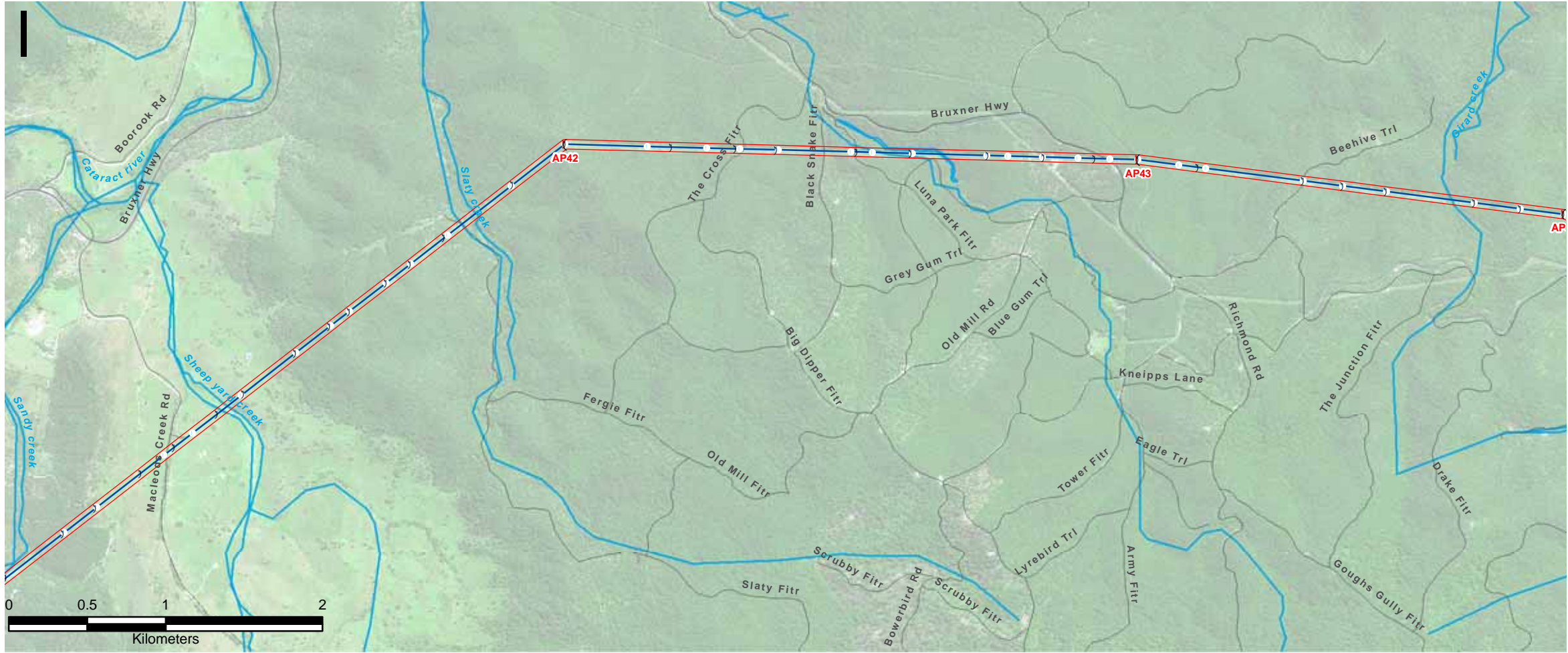
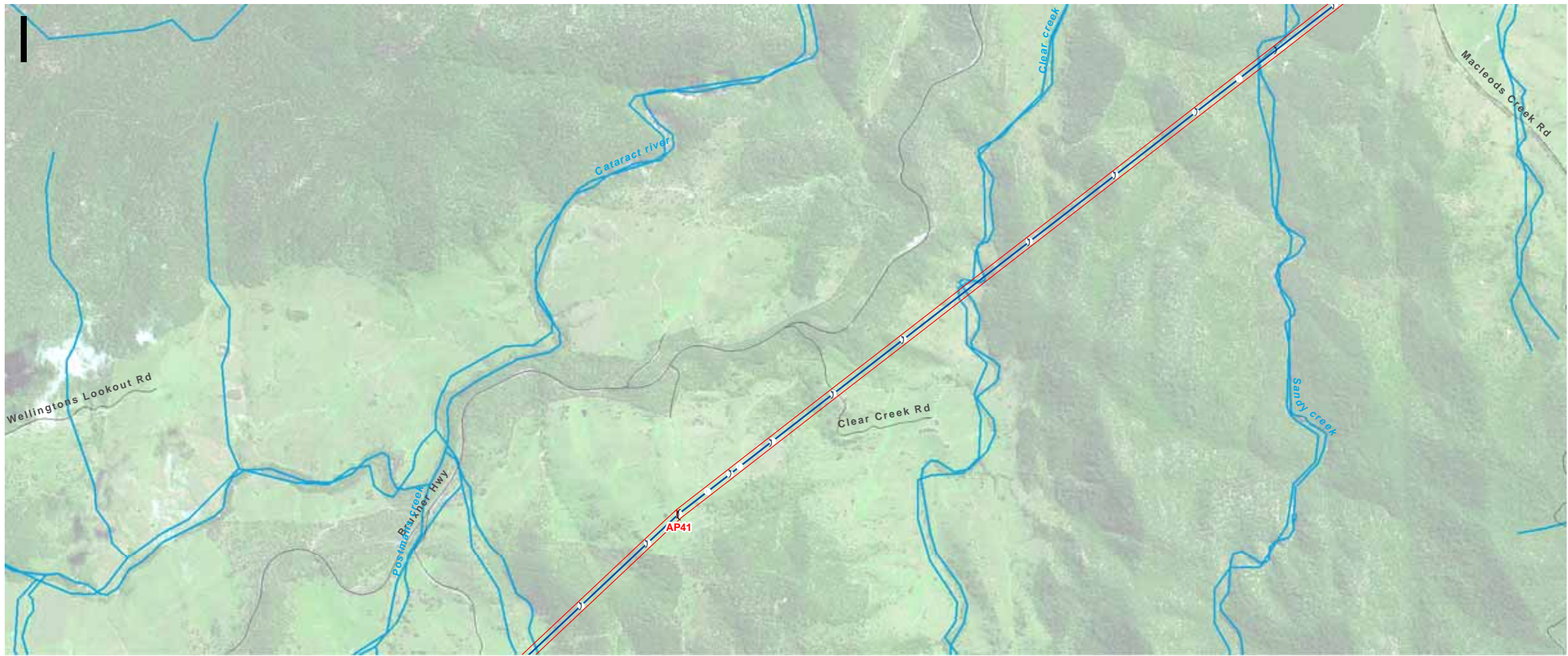
- Aquatic Ecological Community of the Lowland Catchment of the Darling River (FM Act)

Symbols and lines used in this figure are indicative and are not intended to reflect actual size of represented features. Symbols and lines have been enhanced to aid visibility.

Source: Aerial Imagery from TransGrid 2009,
^ TransGrid 2010

Drawn: AO/SB	Approved: JW/MB	Date: 02/06/2011
Job No.: 43177662	File No.: 43177662.086g.mxd	
Client TransGrid		
Project FAR NORTH NSW (DUMARESQ - LISMORE 330kV TRANSMISSION LINE) PROJECT		
Title THREATENED ECOLOGICAL COMMUNITIES		
Figure: 8g		

This drawing is subject to COPYRIGHT. It remains the property of URS Australia Pty Ltd.



LEGEND:

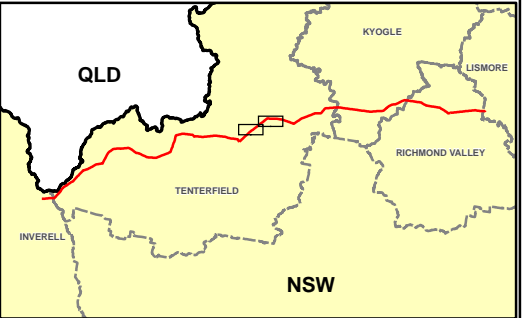
- Existing 96L 132kV Structure Locations^
- Existing Transmission Lines^
- Proposed 330kV Angle Positions (Indicative)^
- Proposed 330kV Structure Locations (Indicative)^
- Proposed 330kV Centreline^
- Proposed 330kV Easement^
- Substation/Switching Station
- Roads and Firetrails
- Waterways

Threatened Ecological Communities

- TSC Act Listed Community
- EPBC Act Listed Community


Aquatic Ecological Community

- Aquatic Ecological Community of the Lowland Catchment of the Darling River (FM Act)



Symbols and lines used in this figure are indicative and are not intended to reflect actual size of represented features. Symbols and lines have been enhanced to aid visibility.

Source: Aerial Imagery from Transgrid 2009, ^ Transgrid 2010

Drawn: AO/SB	Approved: JW/MB	Date: 17/01/2011
Job No.: 43177662	File No.: 43177662.086h.mxd	
Client TransGrid		
Project FAR NORTH NSW (DUMARESQ - LISMORE 330kV TRANSMISSION LINE) PROJECT		
Title THREATENED ECOLOGICAL COMMUNITIES		
Figure: 8h		
		

Datum: GDA94, Projection: UTM, Grid: MGA Zone 56

This drawing is subject to COPYRIGHT. It remains the property of URS Australia Pty Ltd.



LEGEND:

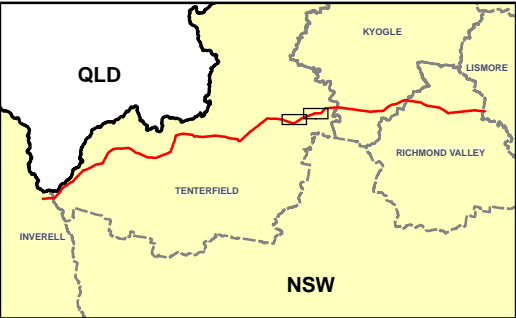
- Existing 96L 132kV Structure Locations^
- Existing Transmission Lines^
- Proposed 330kV Angle Positions (Indicative)^
- Proposed 330kV Structure Locations (Indicative)^
- Proposed 330kV Centreline^
- Proposed 330kV Easement^
- Substation/Switching Station
- Roads and Firetrails
- Waterways

Threatened Ecological Communities

- TSC Act Listed Community
- EPBC Act Listed Community
- Sub-tropical Coastal Floodplain Forest


Aquatic Ecological Community

- Aquatic Ecological Community of the Lowland Catchment of the Darling River (FM Act)



Symbols and lines used in this figure are indicative and are not intended to reflect actual size of represented features. Symbols and lines have been enhanced to aid visibility.

Source: Aerial Imagery from Transgrid 2009,
^ Transgrid 2010

Drawn: AO/SB	Approved: JW/MB	Date: 17/01/2011
Job No.: 43177662		File No.: 43177662.086i.mxd
Client TransGrid		
Project FAR NORTH NSW (DUMARESQ - LISMORE 330kV TRANSMISSION LINE) PROJECT		
Title THREATENED ECOLOGICAL COMMUNITIES		
Figure: 8i		
		

This drawing is subject to COPYRIGHT. It remains the property of URS Australia Pty Ltd.



LEGEND:

- Existing 96L 132kV Structure Locations^
- Existing Transmission Lines^
- Proposed 330kV Angle Positions (Indicative)^
- Proposed 330kV Structure Locations (Indicative)^
- Proposed 330kV Centreline^
- Proposed 330kV Easement^
- Substation/Switching Station
- Roads and Firetrails
- Waterways

Threatened Ecological Communities

- TSC Act Listed Community
- EPBC Act Listed Community
- Sub-tropical Coastal Floodplain Forest

Aquatic Ecological Community

- Aquatic Ecological Community of the Lowland Catchment of the Darling River (FM Act)

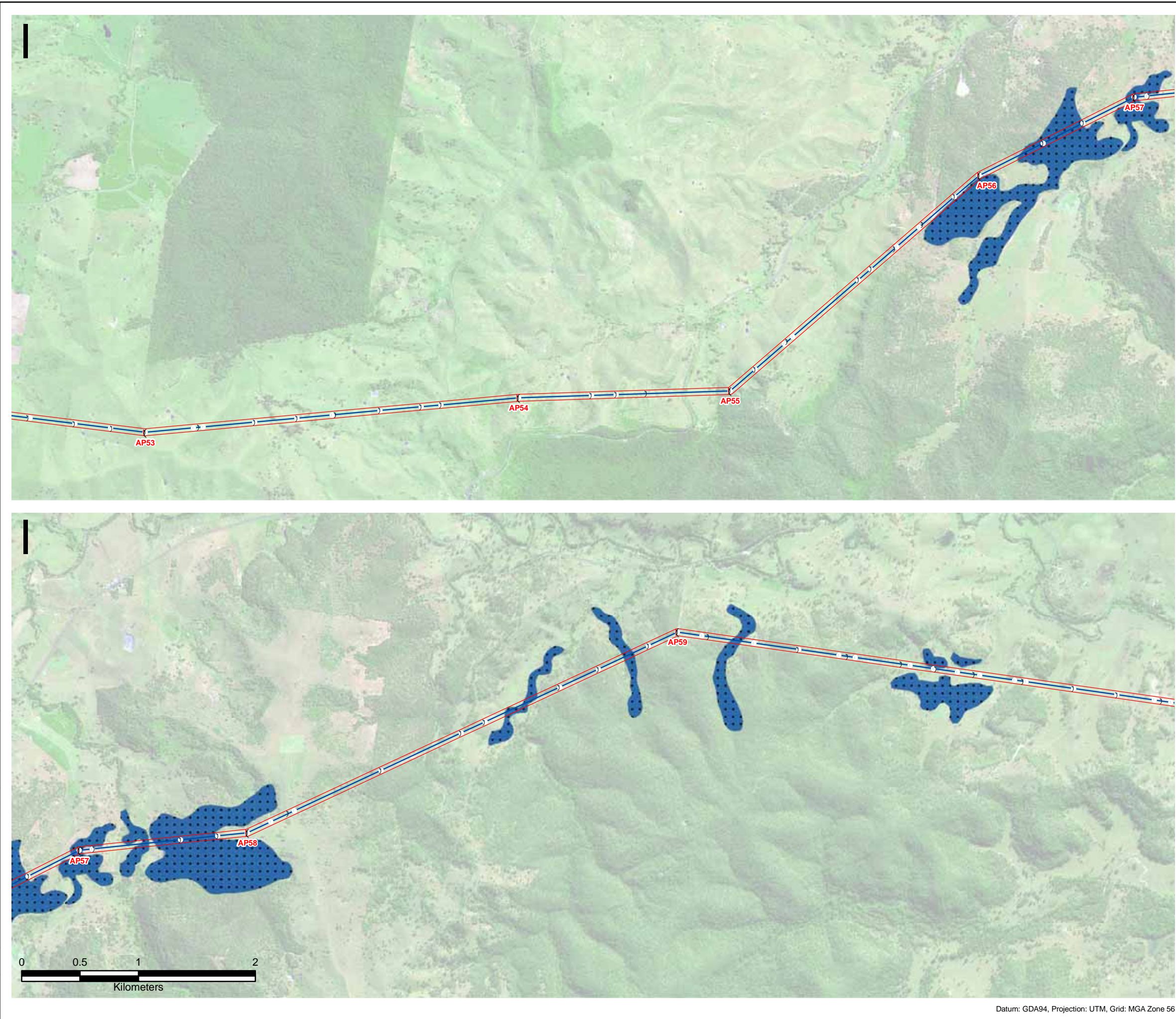
Symbols and lines used in this figure are indicative and are not intended to reflect actual size of represented features.
Symbols and lines have been enhanced to aid visibility.

Source: Aerial Imagery from Transgrid 2009,
^ Transgrid 2010

Drawn: AO/SB	Approved: JW/MB	Date: 17/01/2011
Job No.: 43177662	File No.: 43177662.086j.mxd	
Client TransGrid		
Project FAR NORTH NSW (DUMARESQ - LISMORE 330kV TRANSMISSION LINE) PROJECT		
Title THREATENED ECOLOGICAL COMMUNITIES		
Figure: 8j		

Datum: GDA94, Projection: UTM, Grid: MGA Zone 56

This drawing is subject to COPYRIGHT. It remains the property of URS Australia Pty Ltd.



LEGEND:

- Existing 96L 132kV Structure Locations^
- Existing Transmission Lines^
- Proposed 330kV Angle Positions (Indicative)^
- Proposed 330kV Structure Locations (Indicative)^
- Proposed 330kV Centreline^
- Proposed 330kV Easement^
- Substation/Switching Station
- Roads and Firetrails
- Waterways

Threatened Ecological Communities

- TSC Act Listed Community
- EPBC Act Listed Community
- Sub-tropical Coastal Floodplain Forest

Aquatic Ecological Community

- Aquatic Ecological Community of the Lowland Catchment of the Darling River (FM Act)

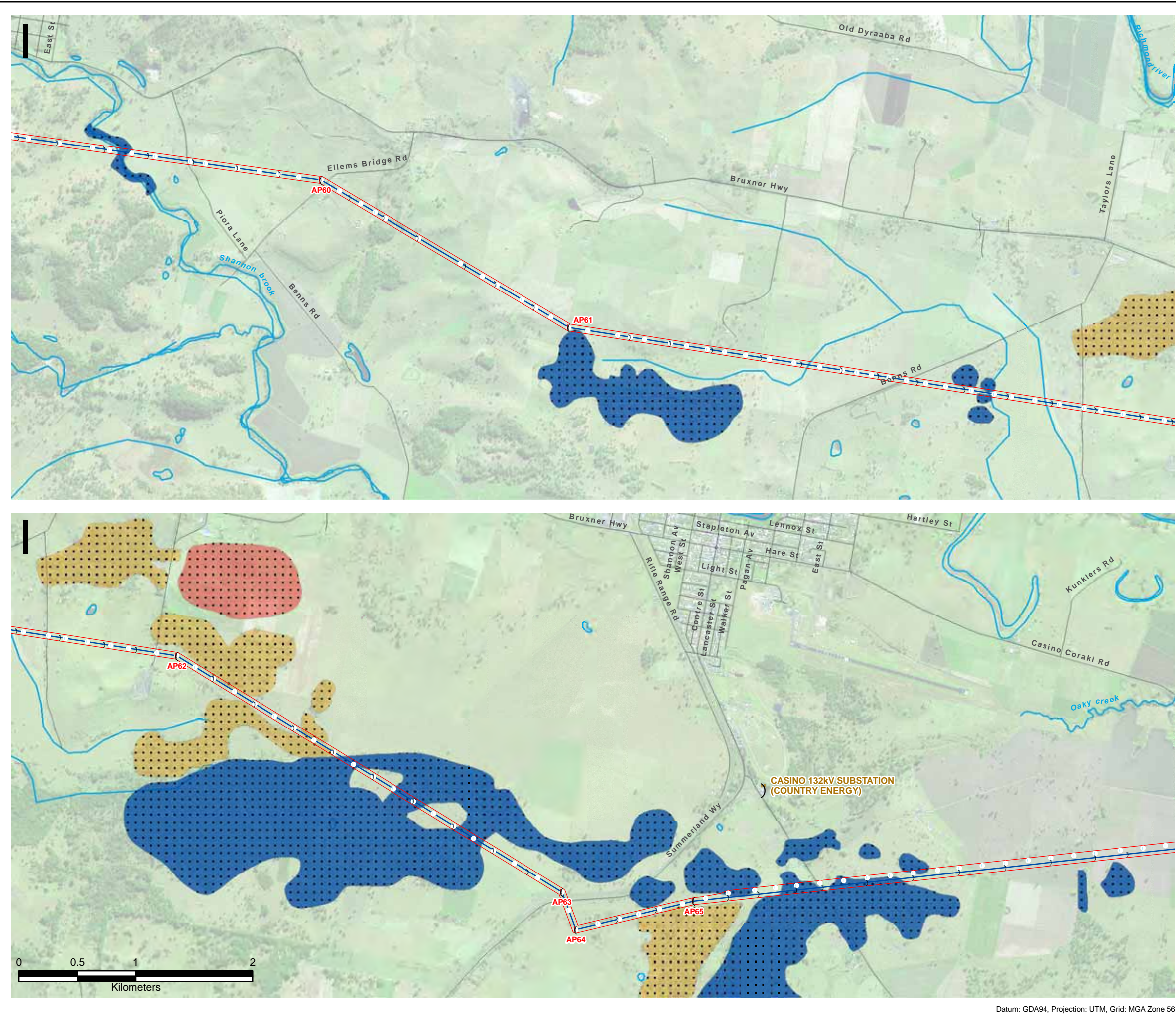
Symbols and lines used in this figure are indicative and are not intended to reflect actual size of represented features. Symbols and lines have been enhanced to aid visibility.

Source: Aerial Imagery from Transgrid 2009,
^ Transgrid 2010

Drawn: AO/SB	Approved: JW/MB	Date: 17/01/2011
Job No.: 43177662	File No.: 43177662.086k.mxd	
Client TransGrid		
Project FAR NORTH NSW (DUMARESQ - LISMORE 330kV TRANSMISSION LINE) PROJECT		
Title THREATENED ECOLOGICAL COMMUNITIES		
Figure: 8k		

Datum: GDA94, Projection: UTM, Grid: MGA Zone 56

This drawing is subject to COPYRIGHT. It remains the property of URS Australia Pty Ltd.



LEGEND:

- Existing 96L 132kV Structure Locations^
- Existing Transmission Lines^
- Proposed 330kV Angle Positions (Indicative)^
- Proposed 330kV Structure Locations (Indicative)^
- Proposed 330kV Centreline^
- Proposed 330kV Easement^
- Substation/Switching Station
- Roads and Firetrails
- Waterways

Threatened Ecological Communities

- TSC Act Listed Community
- EPBC Act Listed Community
- Sub-tropical Coastal Floodplain Forest
- Swamp Sclerophyll Forest
- Freshwater Wetlands on Coastal Floodplains of the

Aquatic Ecological Community

- Aquatic Ecological Community of the Lowland Catchment of the Darling River (FM Act)

Symbols and lines used in this figure are indicative and are not intended to reflect actual size of represented features.
Symbols and lines have been enhanced to aid visibility.

Source: Aerial Imagery from Transgrid 2009,
^ Transgrid 2010

Drawn: AO/SB	Approved: JW/MB	Date: 17/01/2011
Job No.: 43177662	File No.: 43177662.0861.mxd	
Client TransGrid		
Project FAR NORTH NSW (DUMARESQ - LISMORE 330kV TRANSMISSION LINE) PROJECT		
Title THREATENED ECOLOGICAL COMMUNITIES		
Figure: 8I		

Datum: GDA94, Projection: UTM, Grid: MGA Zone 56

This drawing is subject to COPYRIGHT. It remains the property of URS Australia Pty Ltd.



LEGEND:

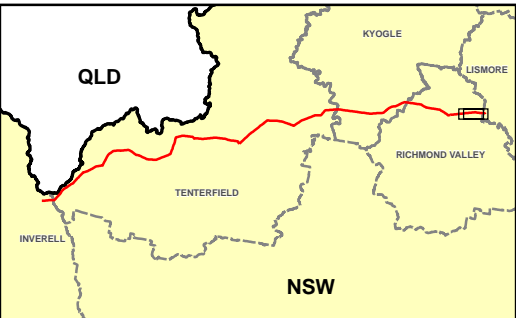
- Existing 96L 132kV Structure Locations^
- Existing Transmission Lines^
- Proposed 330kV Angle Positions (Indicative)^
- Proposed 330kV Structure Locations (Indicative)^
- Proposed 330kV Centreline^
- Proposed 330kV Easement^
- Substation/Switching Station
- Roads and Firetrails
- Waterways

Threatened Ecological Communities

- TSC Act Listed Community
- EPBC Act Listed Community
- Sub-tropical Coastal Floodplain Forest


Aquatic Ecological Community

- Aquatic Ecological Community of the Lowland Catchment of the Darling River (FM Act)



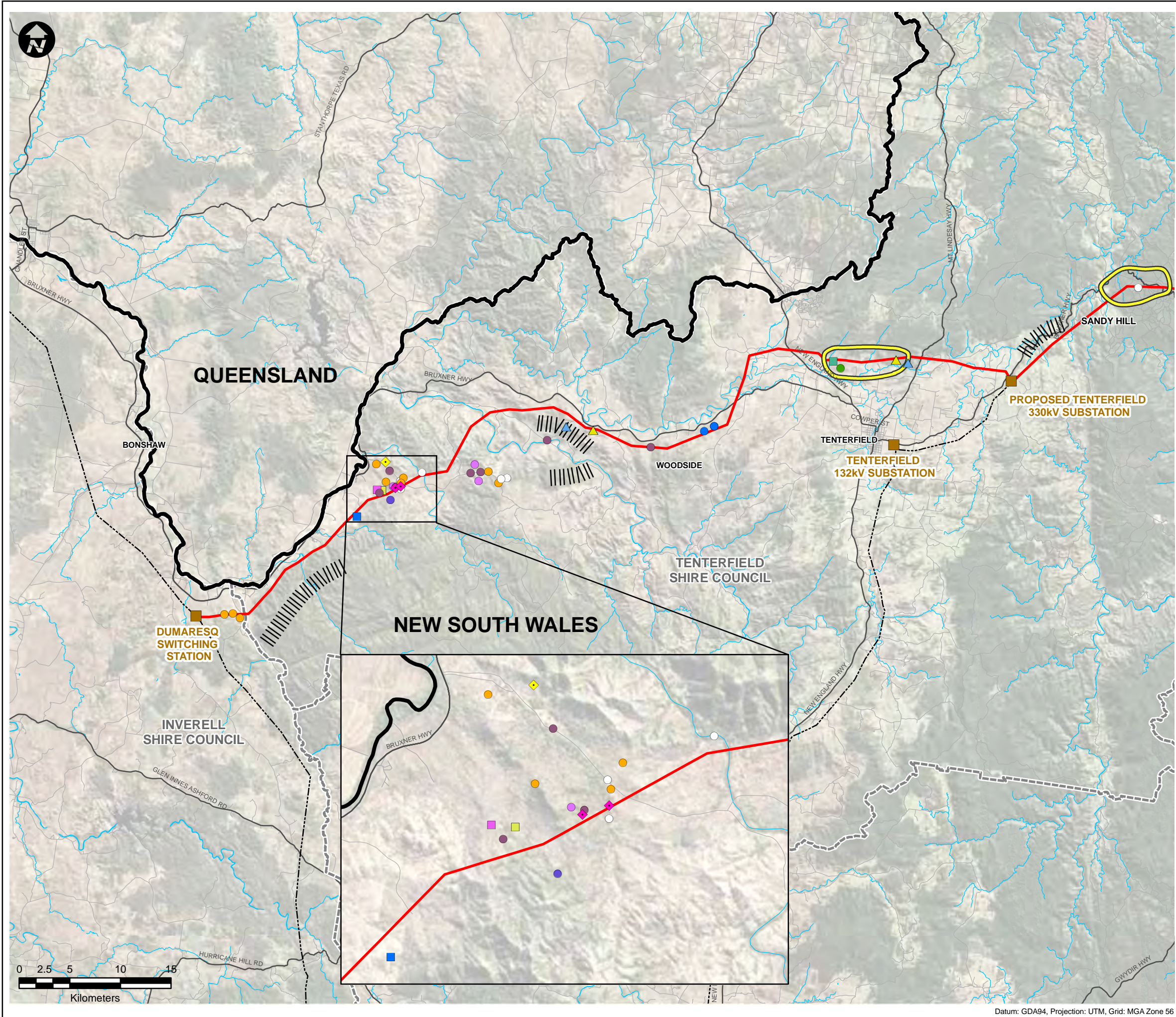
Symbols and lines used in this figure are indicative and are not intended to reflect actual size of represented features. Symbols and lines have been enhanced to aid visibility.

Source: Aerial Imagery from Transgrid 2009,
^ Transgrid 2010

Drawn: AO/SB	Approved: JW/MB	Date: 17/01/2011
Job No.: 43177662		File No.: 43177662.086m.mxd
Client TransGrid		
Project FAR NORTH NSW (DUMARESQ - LISMORE 330kV TRANSMISSION LINE) PROJECT		
Title THREATENED ECOLOGICAL COMMUNITIES		
Figure: 8m		
		

Datum: GDA94, Projection: UTM, Grid: MGA Zone 56

This drawing is subject to COPYRIGHT. It remains the property of URS Australia Pty Ltd.



LEGEND:

- Existing Transmission Lines^
- Proposed 330kV Alignment^
- Substation/Switching Station
- State Border
- Local Government Area
- Roads
- Waterways
- URS identified Habitat Features:
 - Boulders
 - ||||| Steep Terrain/Caves
- URS identified Threatened Flora:
 - ◆ *Cadellia pentastylis*
 - ◆ *Eucalyptus caleyi* subsp. *ovendenii*
 - ◆ Scattered location of *Dichanthium setosum*
- URS Identified Threatened Fauna:

Aves

- Brown Treecreeper *
- Diamond Firetail
- Grey Crowned Babbler
- Little Lorikeet
- Olive Whistler
- Powerful Owl
- Speckled Warbler #
- Turquoise Parrot

Mammalia

- ▲ Brush-tailed Phascogale #
- ▲ Rufus Bettong
- ▲ Spotted-tailed Quoll #
- ▲ Squirrel Glider

Microchiroptera

- Eastern Bentwing-bat
- Eastern Cave Bat
- Little Bentwing-bat
- Yellow-bellied Sheath-tail Bat

Megachiroptera

- ◆ Grey-headed Flying-fox

* Eastern Subspecies
Land Owner Sightings

Symbols and lines used in this figure are indicative and are not intended to reflect actual size of represented features. Symbols and lines have been enhanced to aid visibility.

Source: Aerial Imagery from Microsoft © Bing Maps
^ Transgrid 2010

Drawn: AO/SB	Approved: JW/MB	Date: 08/12/2010
Job No.: 43177662	File No.: 43177662.094.mxd	
Client TransGrid		
Project FAR NORTH NSW (DUMARESQ - LISMORE 330kV TRANSMISSION LINE) PROJECT		
Title THREATENED FLORA, FAUNA AND HABITAT FEATURES RECORDED DURING FIELD SURVEYS (WEST)		
Figure: 9a		