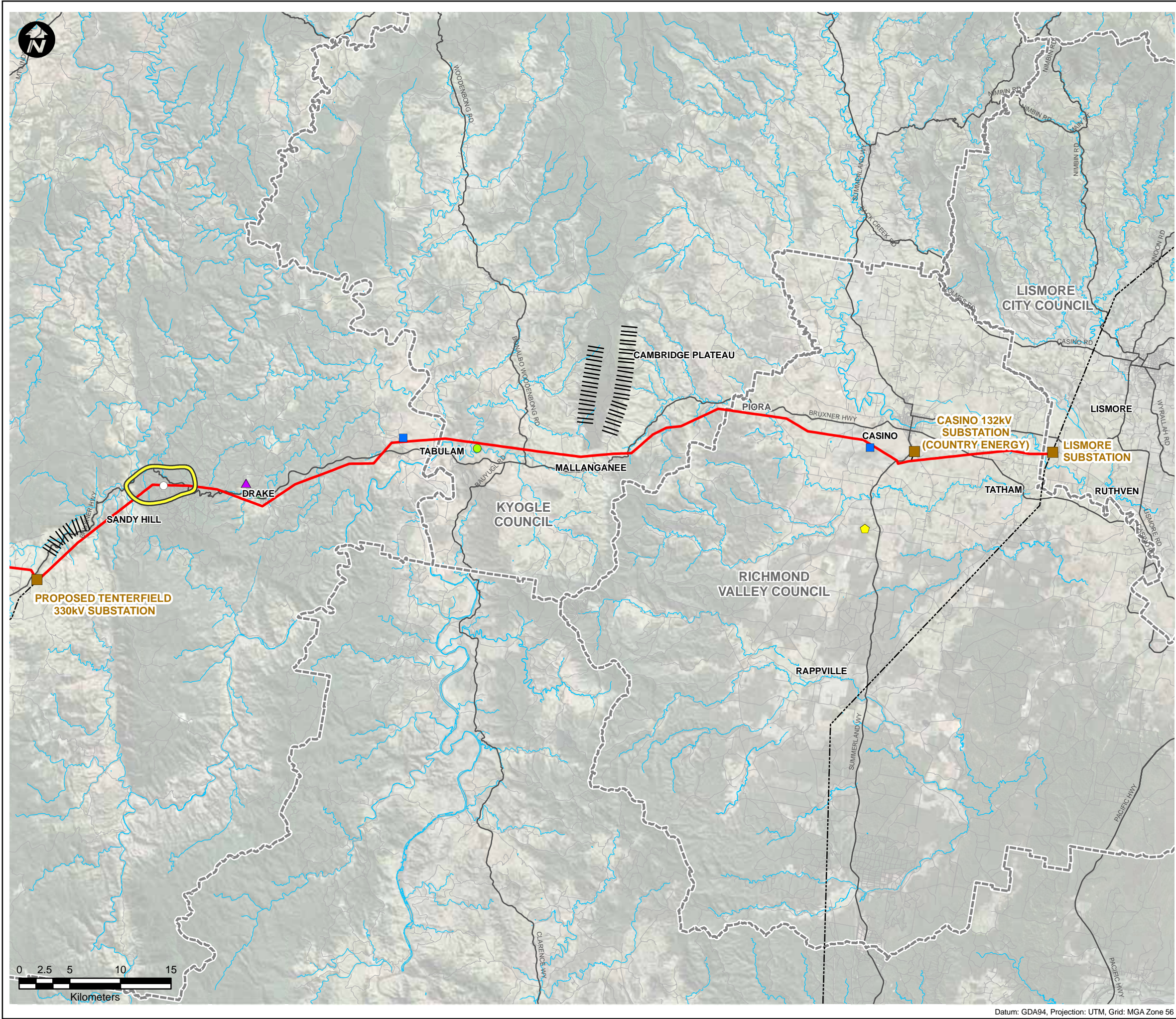


This drawing is subject to COPYRIGHT. It remains the property of URS Australia Pty Ltd.



LEGEND:

- Existing Transmission Lines^
- Proposed 330kV Alignment^
- Substation/Switching Station
- State Border
- Local Government Area
- Roads
- Waterways
- URS identified Habitat Features:
 - Boulders
 - Steep Terrain/Caves
- URS identified Threatened Flora:
 - Cadellia pentastylis*
 - Eucalyptus caleyi* subsp. *ovenidenii*
 - Scattered locations of *Dichanthium setosum*
- URS Identified Threatened Fauna:
 - Aves**
 - Brown Treecreeper *
 - Diamond Firetail
 - Grey Crowned Babbler
 - Little Lorikeet
 - Olive Whistler
 - Powerful Owl
 - Speckled Warbler #
 - Turquoise Parrot
 - Mammalia**
 - Brush-tailed Phascogale #
 - Rufus Bettong
 - Spotted-tailed Quoll #
 - Squirrel Glider
 - Microchiroptera**
 - Eastern Bentwing-bat
 - Eastern Cave Bat
 - Little Bentwing-bat
 - Yellow-bellied Sheathtail Bat
 - Megachiroptera**
 - Grey-headed Flying-fox

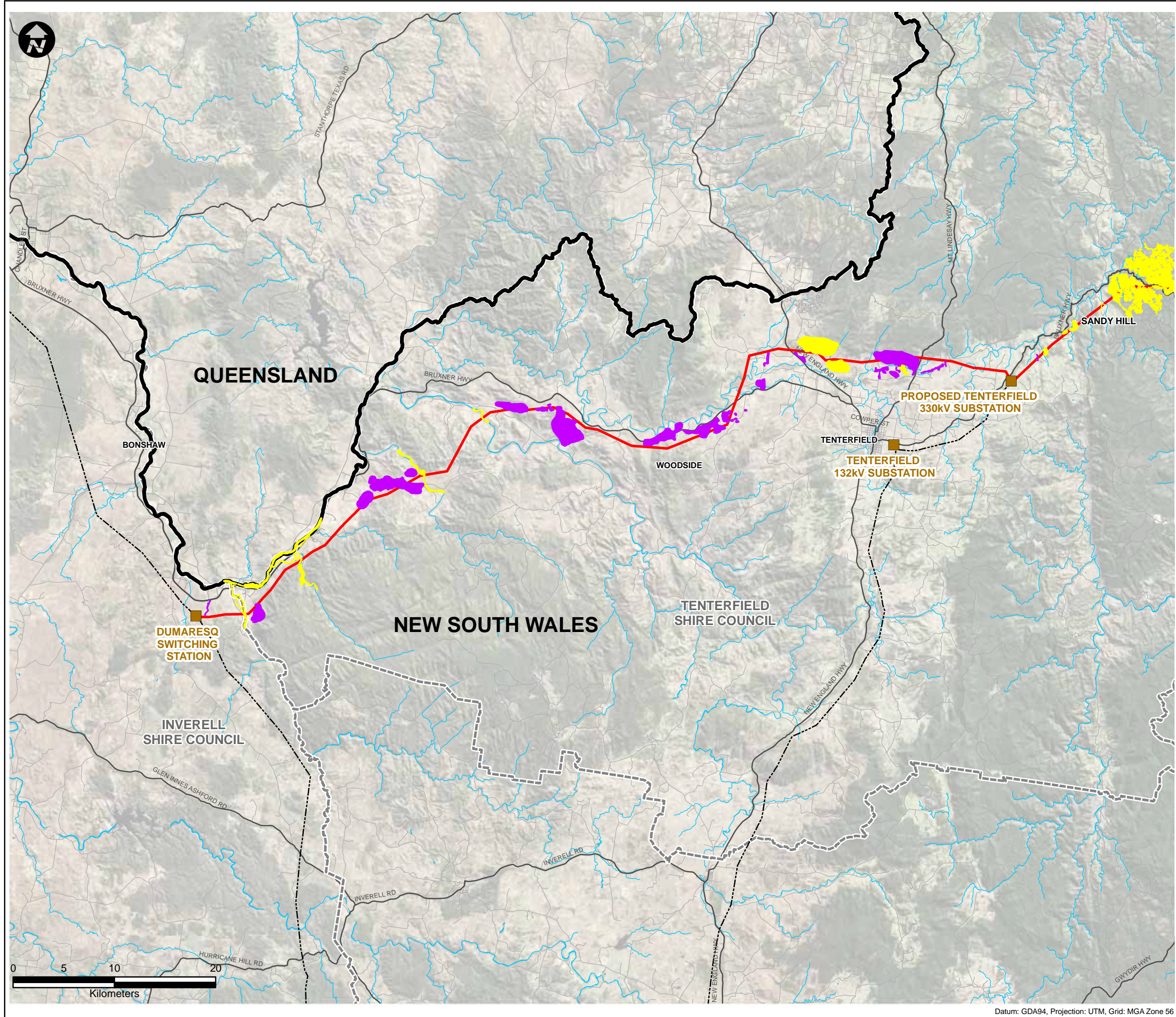
Symbols and lines used in this figure are indicative and are not intended to reflect actual size of represented features. Symbols and lines have been enhanced to aid visibility.

Source: Aerial Imagery from Microsoft © Bing Maps
^ Transgrid 2010

Drawn: AO/SB	Approved: JW/MB	Date: 08/12/2010
Job No.: 43177662	File No.: 43177662.094-2.mxd	
Client TransGrid		
Project FAR NORTH NSW (DUMARESQ - LISMORE 330kV TRANSMISSION LINE) PROJECT		
Title THREATENED FLORA, FAUNA AND HABITAT FEATURES RECORDED DURING FIELD SURVEYS (EAST)		
Figure: 9b		

Datum: GDA94, Projection: UTM, Grid: MGA Zone 56

This drawing is subject to COPYRIGHT. It remains the property of URS Australia Pty Ltd.




LEGEND:

- Existing Transmission Lines^
- Proposed 330kV Alignment^
- Substation/Switching Station
- ▬ State Border
- ▬ Local Government Area
- Roads
- Waterways
- URS Identified Koala Habitat:
 - Primary Habitat
 - Secondary Habitat

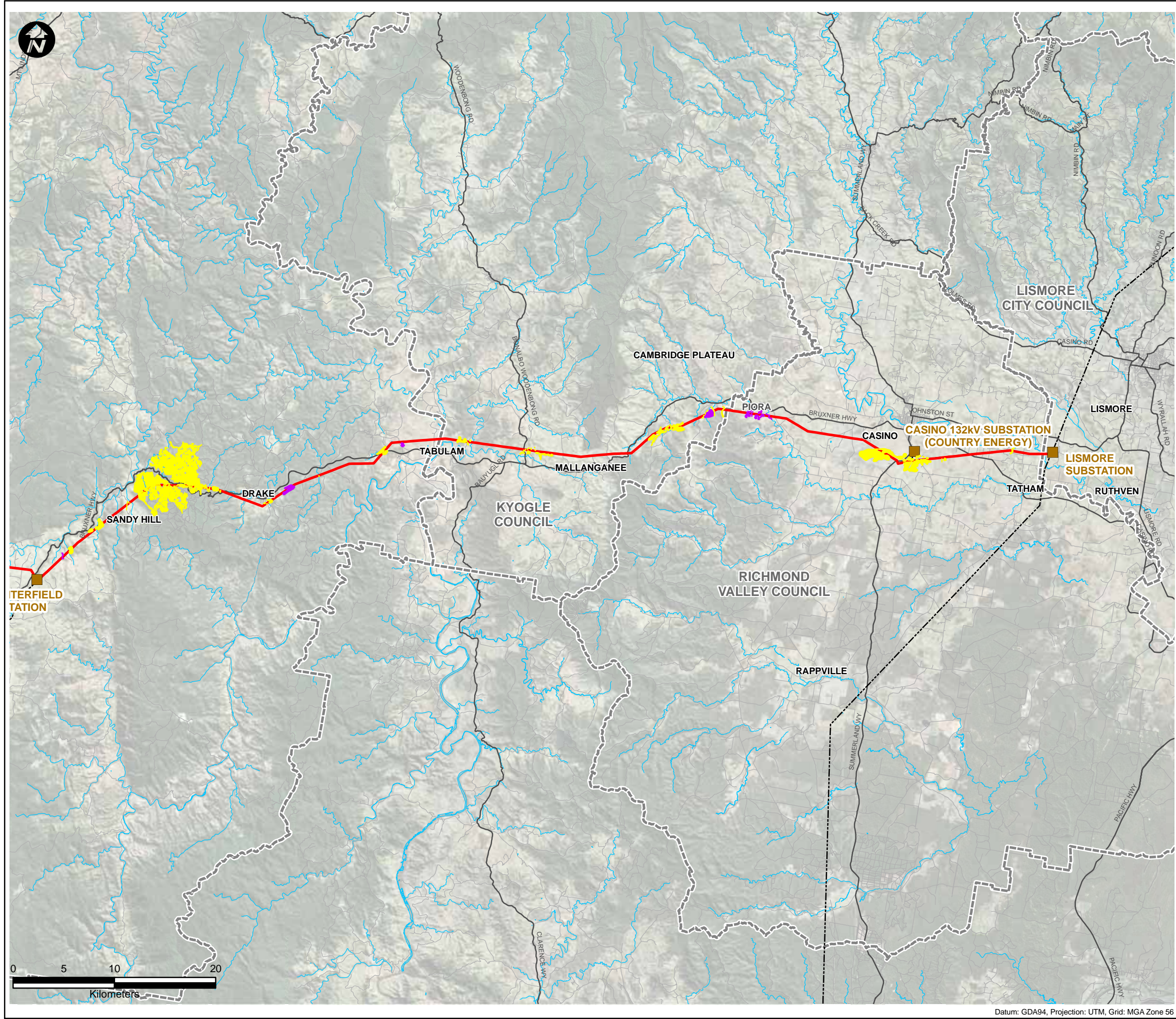
Symbols and lines used in this figure are indicative and are not intended to reflect actual size of represented features. Symbols and lines have been enhanced to aid visibility.

Source: Aerial Imagery from Microsoft © Bing Maps
^ Transgrid 2010

Drawn: AO/SB	Approved: JW/MB	Date: 29/11/2010
Job No.: 43177662		File No.: 43177662.095.mxd
Client TransGrid		
Project FAR NORTH NSW (DUMARESQ - LISMORE 330kV TRANSMISSION LINE) PROJECT		
Title KOALA HABITAT (WEST)		
Figure: 10a		
		

Datum: GDA94, Projection: UTM, Grid: MGA Zone 56


This drawing is subject to COPYRIGHT. It remains the property of URS Australia Pty Ltd.



LEGEND:

- Existing Transmission Lines^
- Proposed 330kV Alignment^
- Substation/Switching Station
- State Border
- Local Government Area
- Roads
- Waterways
- URS Identified Koala Habitat:
 - Primary Habitat
 - Secondary Habitat

Symbols and lines used in this figure are indicative and are not intended to reflect actual size of represented features. Symbols and lines have been enhanced to aid visibility.
Source: Aerial Imagery from Microsoft © Bing Maps
^ Transgrid 2010

Drawn: AO/SB	Approved: JW/MB	Date: 29/11/2010
Job No.: 43177662		File No.: 43177662.095.mxd
Client TransGrid		
Project FAR NORTH NSW (DUMARESQ - LISMORE 330kV TRANSMISSION LINE) PROJECT		
Title KOALA HABITAT (EAST)		
Figure: 10b		
		

Datum: GDA94, Projection: UTM, Grid: MGA Zone 56