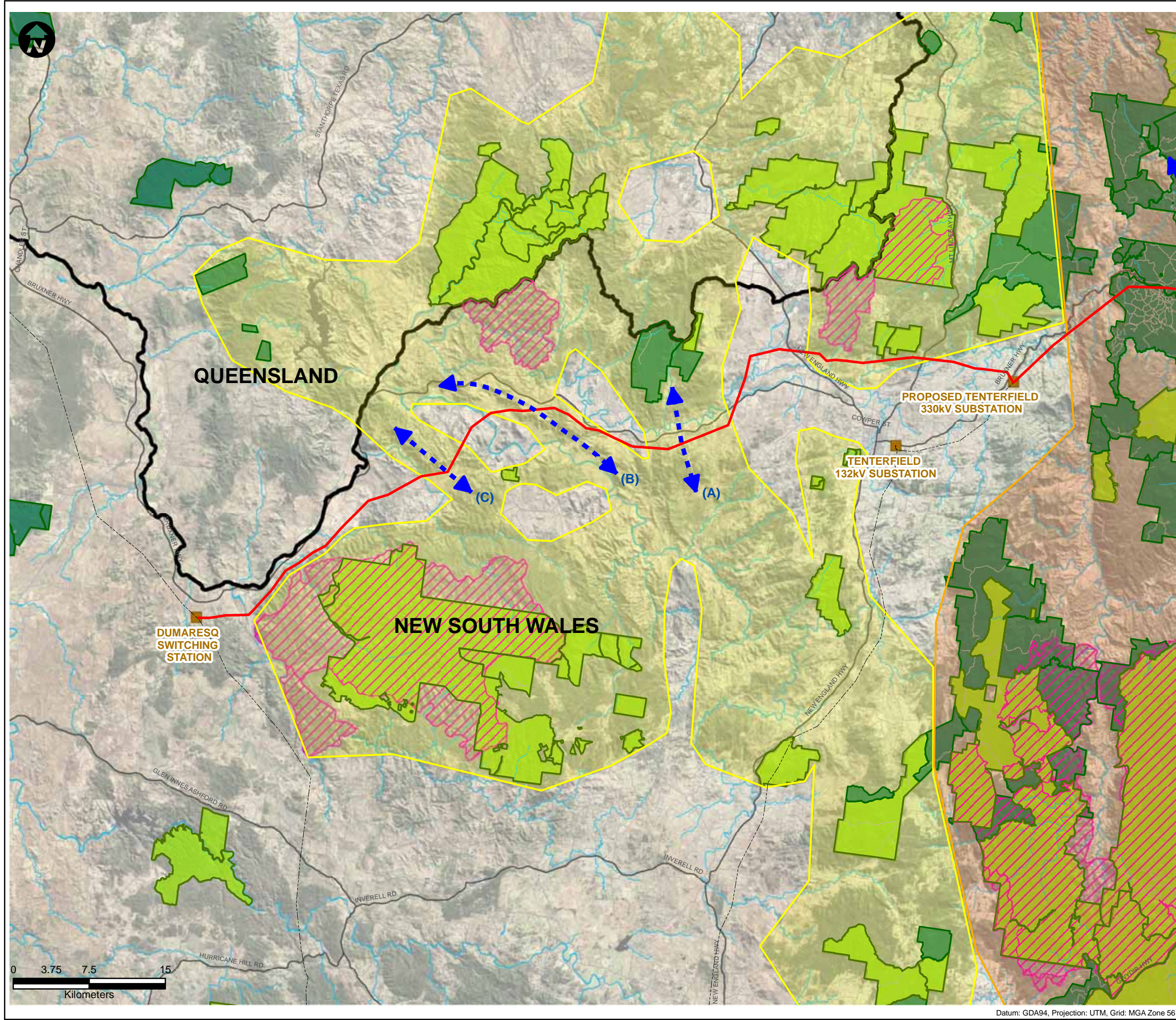


This drawing is subject to COPYRIGHT. It remains the property of URS Australia Pty Ltd.



LEGEND:

- Existing Transmission Lines^
- Proposed 330kV Alignment^
- Substation/Switching Station
- State Border
- Roads
- Waterways
- Wilderness Areas
- State Forest
- National Parks, Nature Reserve, State Government Area
- DECCW Identified Habitat Corridors (Great Eastern Ranges, 2009)
- Additional Habitat Corridors (URS)
- Direction of Movement

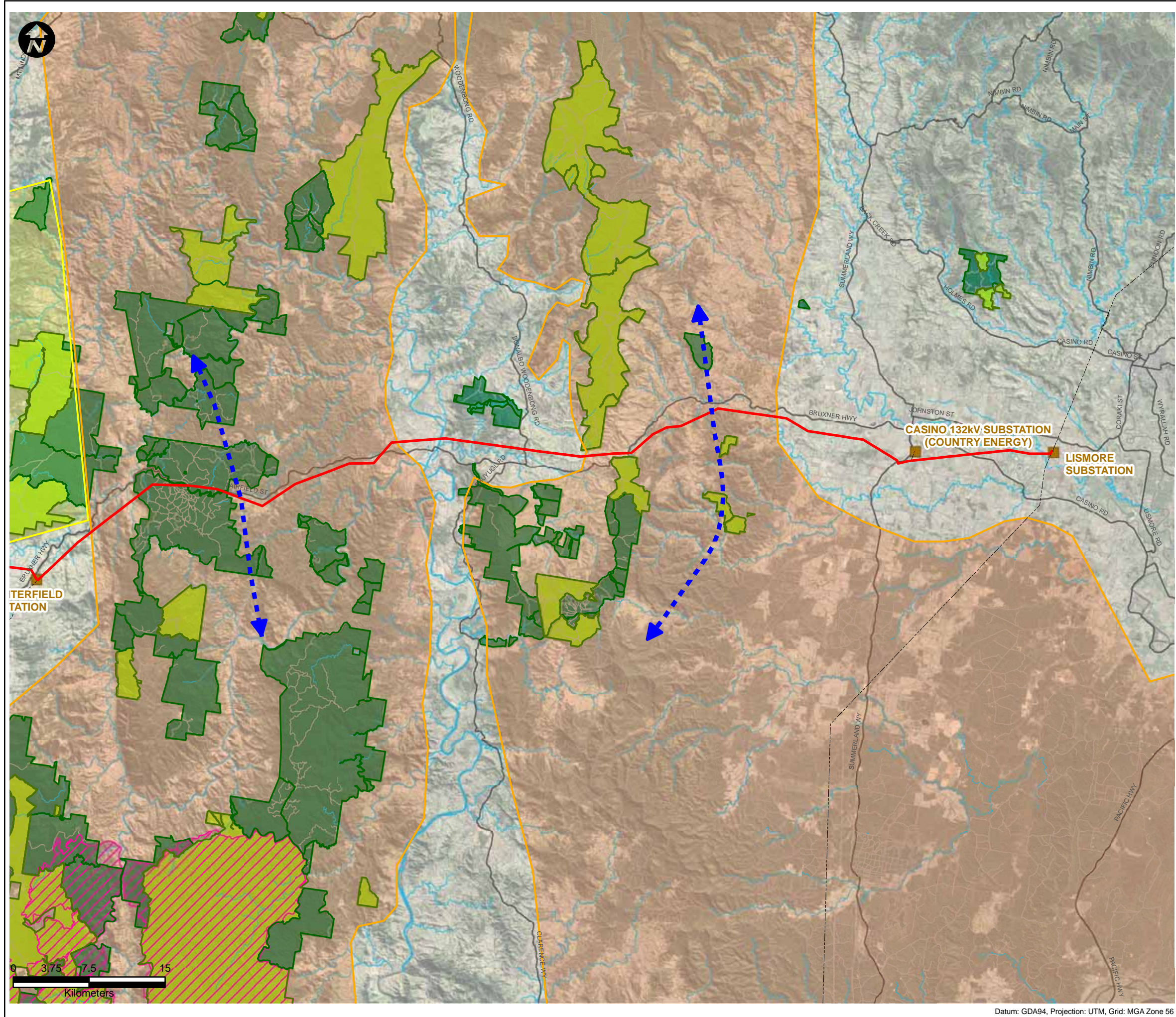
Symbols and lines used in this figure are indicative and are not intended to reflect actual size of represented features. Symbols and lines have been enhanced to aid visibility.

Source: Aerial Imagery from Microsoft © Bing Maps
^ Transgrid 2010

Drawn: AO/SB	Approved: JW/MB	Date: 08/12/2010
Job No.: 43177662	File No.: 43177662.096.mxd	
Client TransGrid		
Project FAR NORTH NSW (DUMARESQ - LISMORE 330kV TRANSMISSION LINE) PROJECT		
Title HABITAT CORRIDORS (WEST)		
Figure: 11a		

Datum: GDA94, Projection: UTM, Grid: MGA Zone 56

This drawing is subject to COPYRIGHT. It remains the property of URS Australia Pty Ltd.



LEGEND:

- Existing Transmission Lines[^]
- Proposed 330kV Alignment[^]
- Substation/Switching Station
- State Border
- Roads
- Waterways
- Wilderness Areas
- State Forest
- National Parks, Nature Reserve, State Government Area
- DECCW Identified Habitat Corridors (Great Eastern Ranges, 2009)
- Additional Habitat Corridors (URS)
- Direction of Movement

Symbols and lines used in this figure are indicative and are not intended to reflect actual size of represented features. Symbols and lines have been enhanced to aid visibility.

Source: Aerial Imagery from Microsoft © Bing Maps
[^] Transgrid 2010

Drawn: AO/SB	Approved: JW/MB	Date: 08/12/2010
Job No.: 43177662	File No.: 43177662.096.mxd	
Client TransGrid		
Project FAR NORTH NSW (DUMARESQ - LISMORE 330kV TRANSMISSION LINE) PROJECT		
Title HABITAT CORRIDORS (EAST)		
Figure: 11b		

Datum: GDA94, Projection: UTM, Grid: MGA Zone 56