



SUBJECT SITE

55

0 1000m

SOURCE: Department of Lands 2008

SCALE: 1 : 25 000 @ A4

JAMES WARREN & ASSOCIATES PTY LIMITED
Environmental Consultants

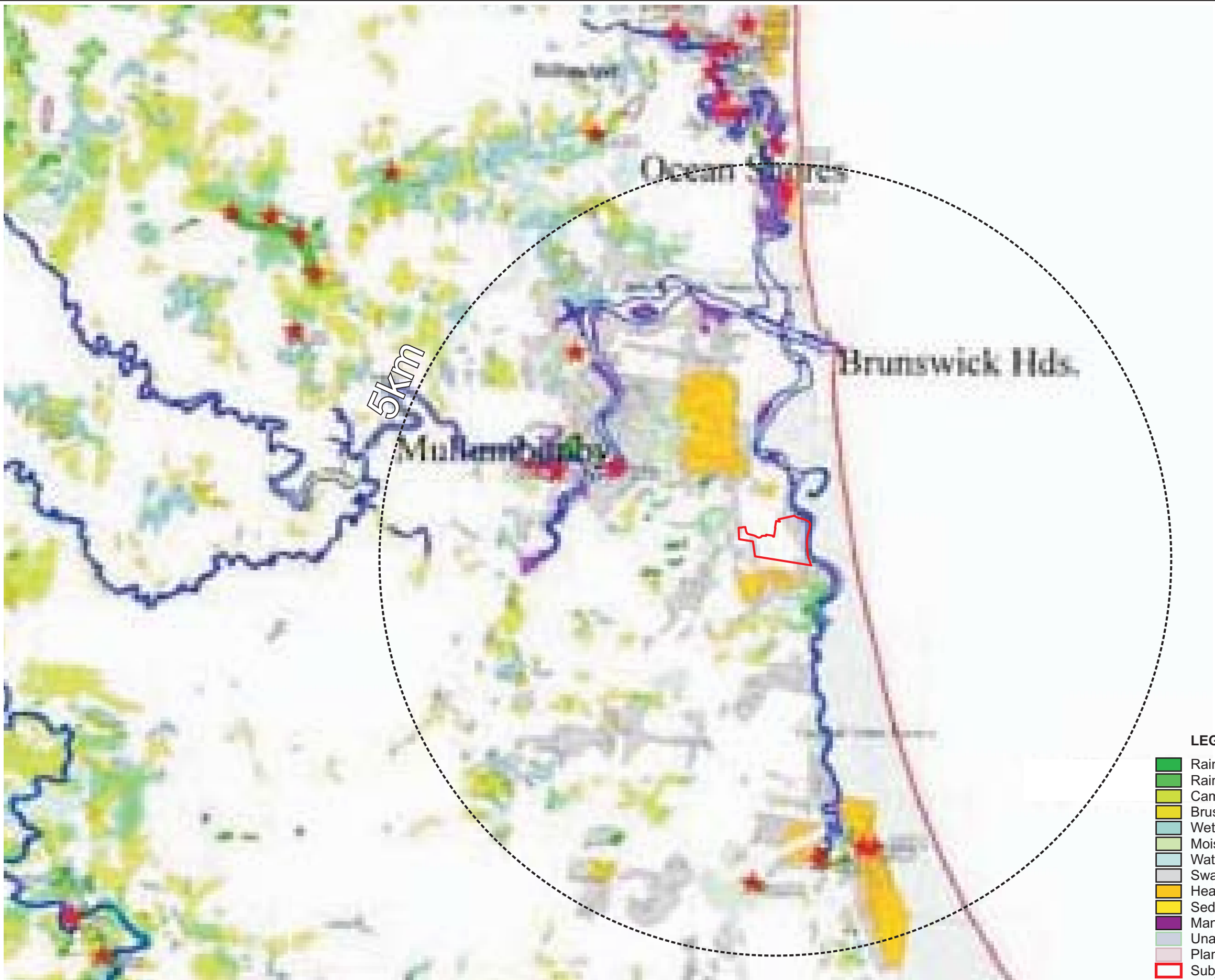
CLIENT
Codlea Pty Ltd
PROJECT
Ecological Assessment
Bayside Brunswick
Lot 73 on DP851902; Brunswick Heads, NSW
Shire of Byron

FIGURE 1

PREPARED: BW
DATE: 04 July 2011
FILE: N97066_Locality.cdr

TITLE

LOCALITY PLAN



LEGEND

- Rainforest (minimal Camphor laurel presence)
- Rainforest (low to moderate Camphor laurel presence)
- Camphor laurel +/- naturalised exotic tree species
- Brushbox forest
- Wet to moist sclerophyll forest
- Moist to dry sclerophyll forest
- Wattle/mixed regrowth forest & shrubland
- Swamp sclerophyll forest
- Heathland/shrubland
- Sedgeland/fernland/grassland
- Mangrove forest
- Unassessed (U)
- Plantation (P)
- Subject Site

0 1.5km
1 : 50 000

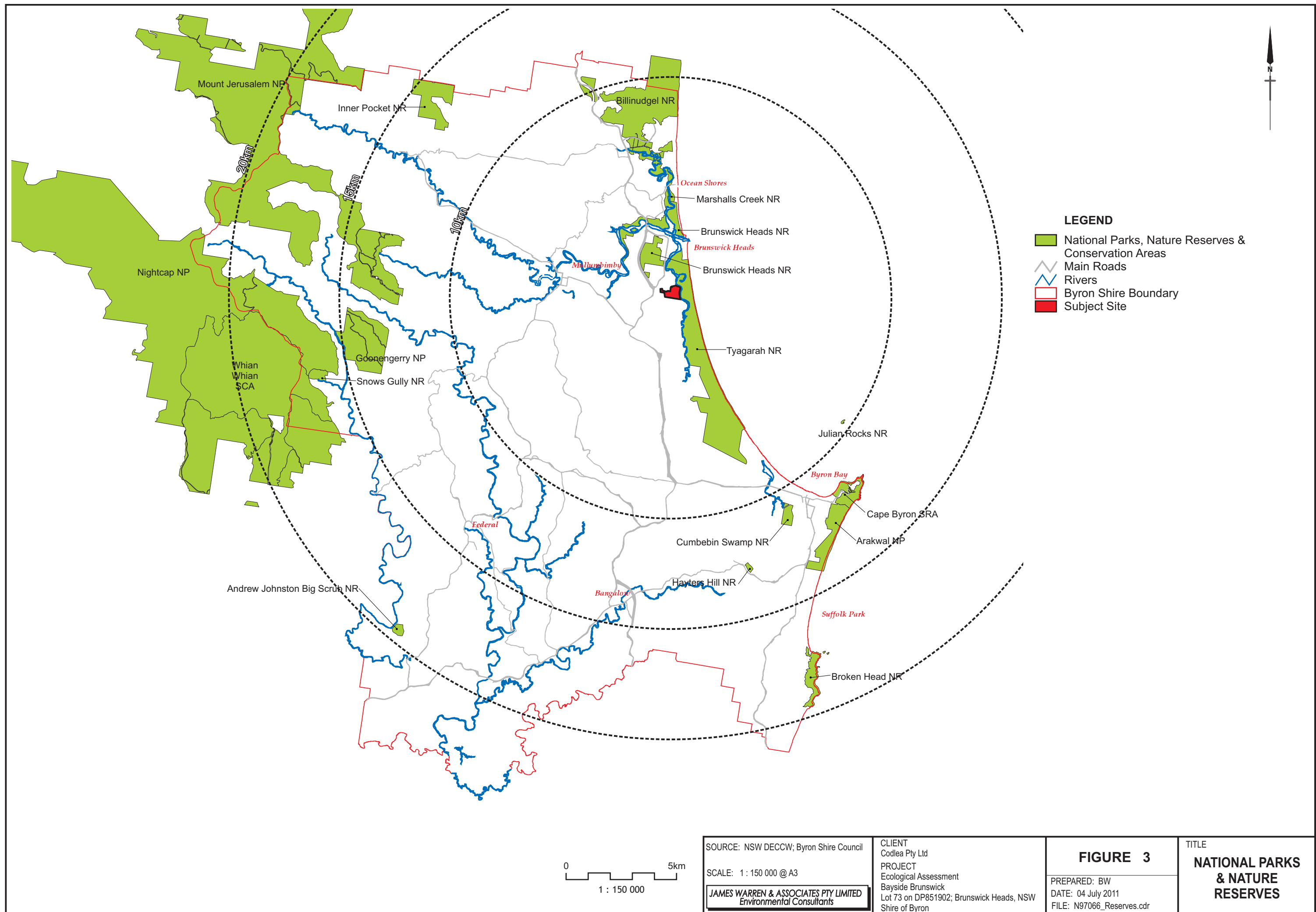
SOURCE: Byron Flora and Fauna Study 1999
SCALE: 1 : 50 000 @ A3
JAMES WARREN & ASSOCIATES PTY LIMITED
Environmental Consultants

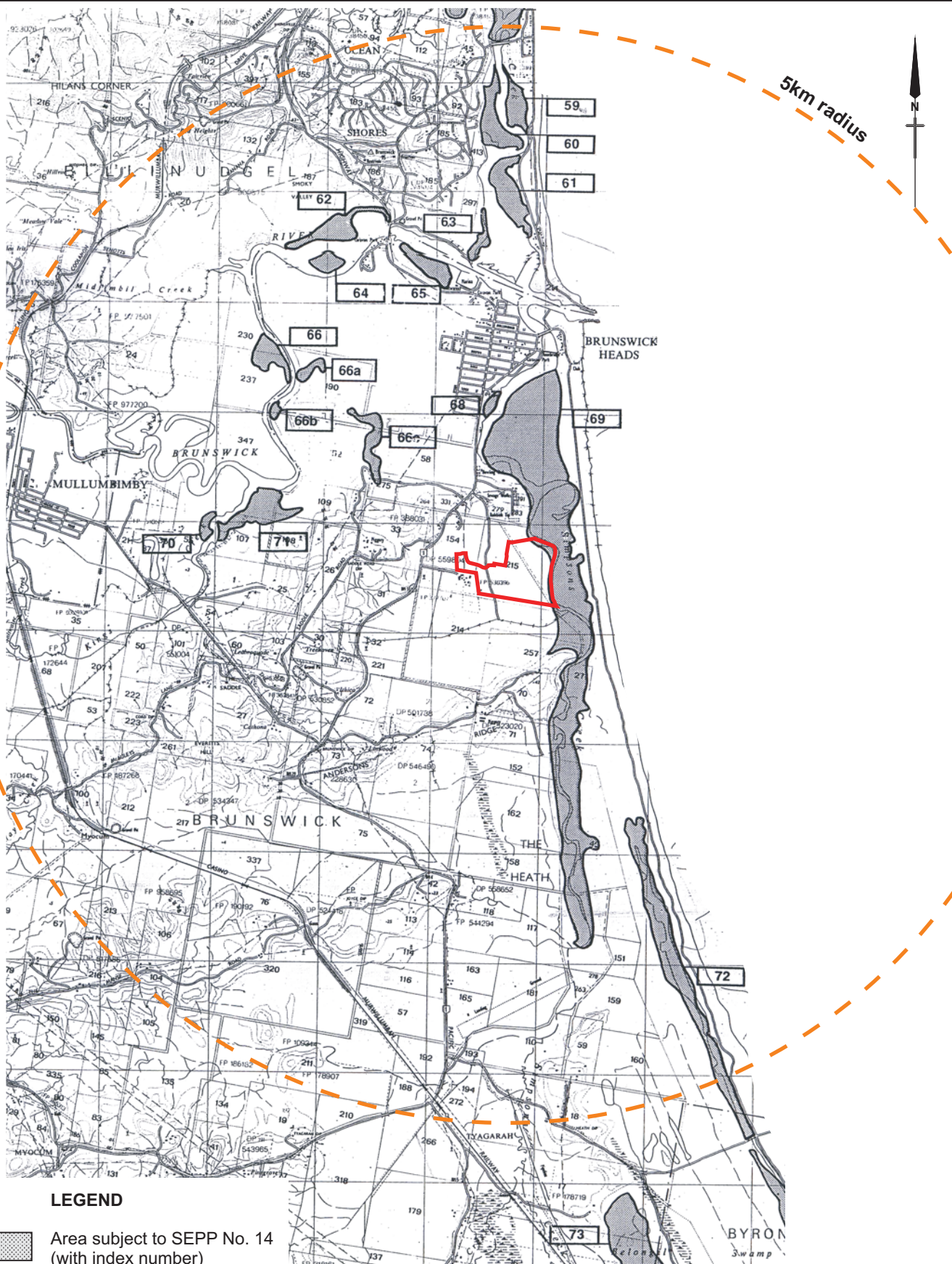
CLIENT
Codlea Pty Ltd
PROJECT
Ecological Assessment
Bayside Brunswick
Lot 73 on DP851902; Brunswick Heads, NSW
Shire of Byron

FIGURE 2

PREPARED: BW
DATE: 04 July 2011
FILE: N97066_Byron Veg.cdr

TITLE
**VEGETATION
OF BYRON
SHIRE**





LEGEND



Area subject to SEPP No. 14
(with index number)



Subject site

0 1.5km

SOURCE: State Env. Planning Policy No. 14
Coastal Wetlands Map 4 Amend. No 11

SCALE: 1 : 50 000 @ A4

JAMES WARREN & ASSOCIATES PTY LIMITED
Environmental Consultants

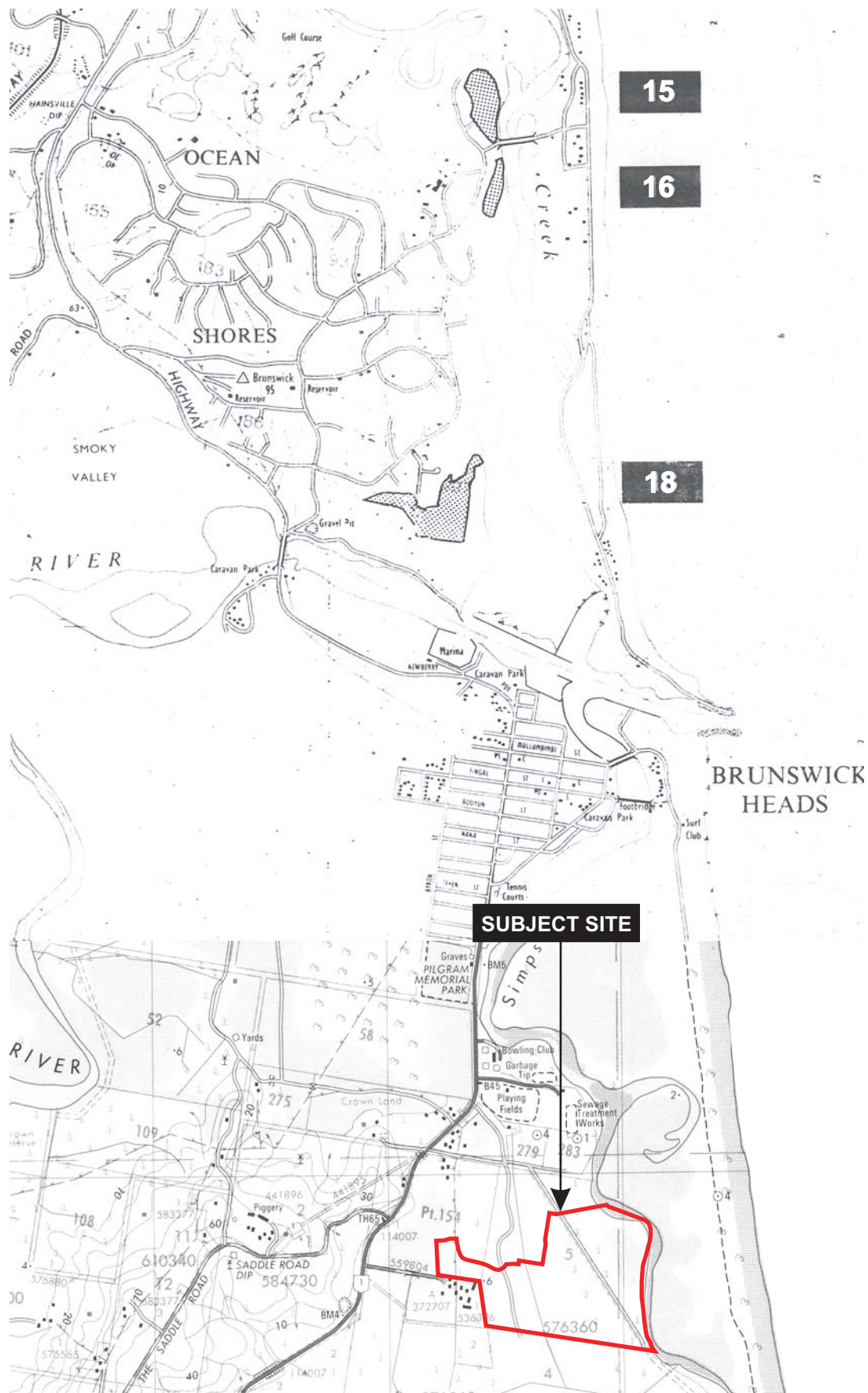
CLIENT
Codlea Pty Ltd
PROJECT
Ecological Assessment
Bayside Brunswick
Lot 73 on DP851902; Brunswick Heads, NSW
Shire of Byron

FIGURE 4

PREPARED: BW
DATE: 04 July 2011
FILE: N97066_SEPP14.cdr

TITLE

**SEPP No. 14
COASTAL
WETLANDS**



SOURCE: State Env. Planning Policy No.26
Littoral Rainforest Map 1 Amend.No.1

SCALE: 1 : 25 000 @ A4

JAMES WARREN & ASSOCIATES PTY LIMITED
Environmental Consultants

CLIENT
Codlea Pty Ltd
PROJECT
Ecological Assessment
Bayside Brunswick
Lot 73 on DP851902; Brunswick Heads, NSW
Shire of Byron

FIGURE 5

PREPARED: VJA/BW
DATE: 04 July 2011
FILE: N97066_SEPP26.cdr

TITLE

SEPP No. 26
LITTORAL
RAINFORREST



LEGEND
[Red outline] Subject Site

0 100m
1 : 3000

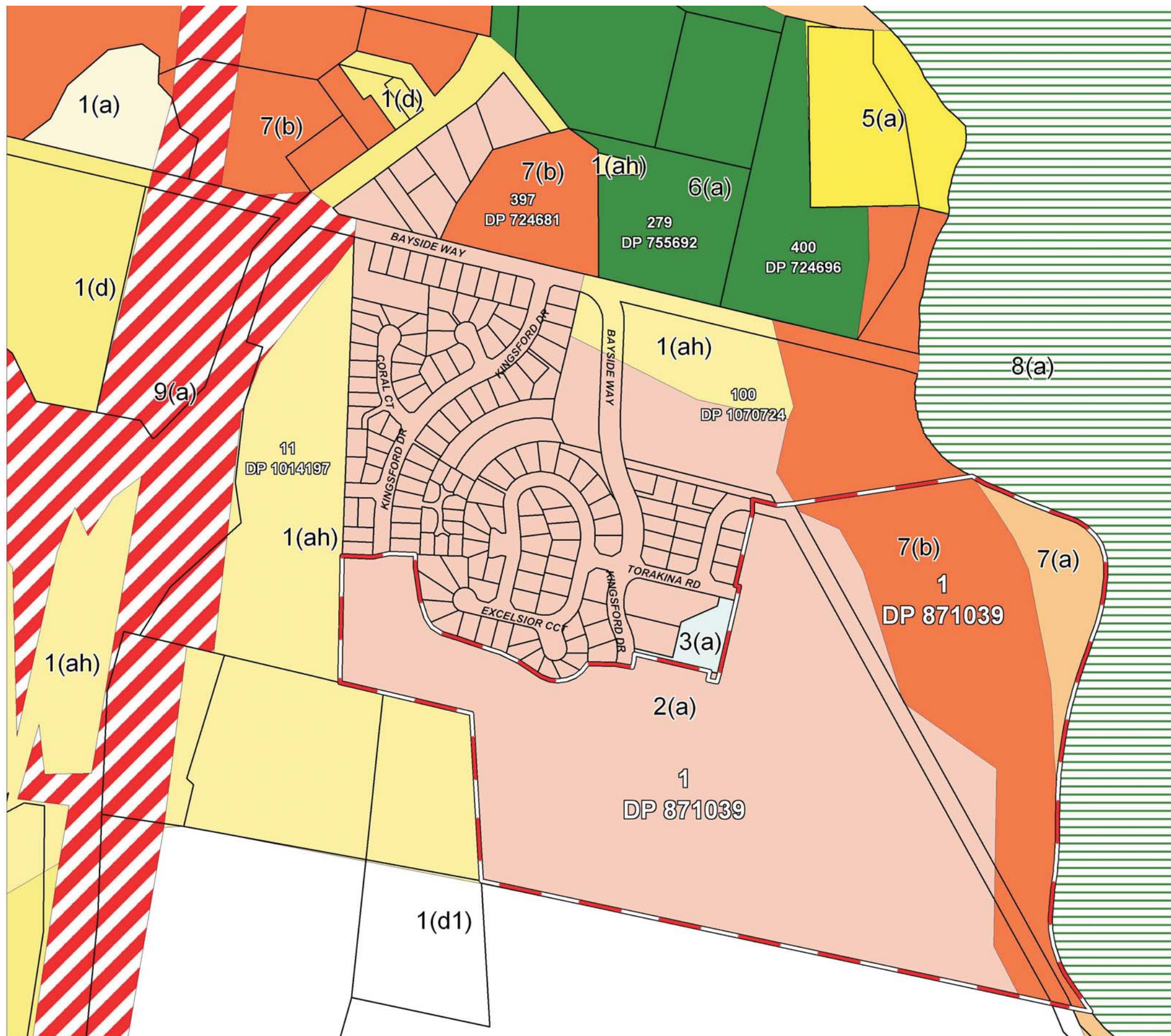
SOURCE: Department of Lands 2004 Aerial;
Landpartners (Ref: LM080082_EV4A.pdf)
SCALE: 1 : 3000 @ A3
JAMES WARREN & ASSOCIATES PTY LIMITED
Environmental Consultants

CLIENT
Codlea Pty Ltd
PROJECT
Ecological Assessment
Bayside Brunswick
Lot 73 on DP851902; Brunswick Heads, NSW
Shire of Byron

FIGURE 6

PREPARED: BW
DATE: 04 July 2011
FILE: N97066_Aerial.cdr

TITLE
**AERIAL
PHOTOGRAPH**



- LEGEND**
- 1(a) General Rural Zone
 - 1(ah) General Rural Zone - hatched
 - 1(d) Investigation Zone
 - 1(d1) Investigation Zone
 - 2(a) Residential Zone
 - 3(a) Business Zone
 - 5(a) Special Uses Zone
 - 6(a) Open Space Zone
 - 7(a) Wetlands Zone
 - 7(b) Coastal Habitat Zone
 - 8(a) National Parks & Nature Reserves
 - 9(a) Proposed Road Zone
 - Subject Site

0 150m
1 : 5000

SOURCE: Landpartners
(Ref: LM080082_EV3A.pdf)
SCALE: 1 : 5000 @ A3

JAMES WARREN & ASSOCIATES PTY LIMITED
Environmental Consultants

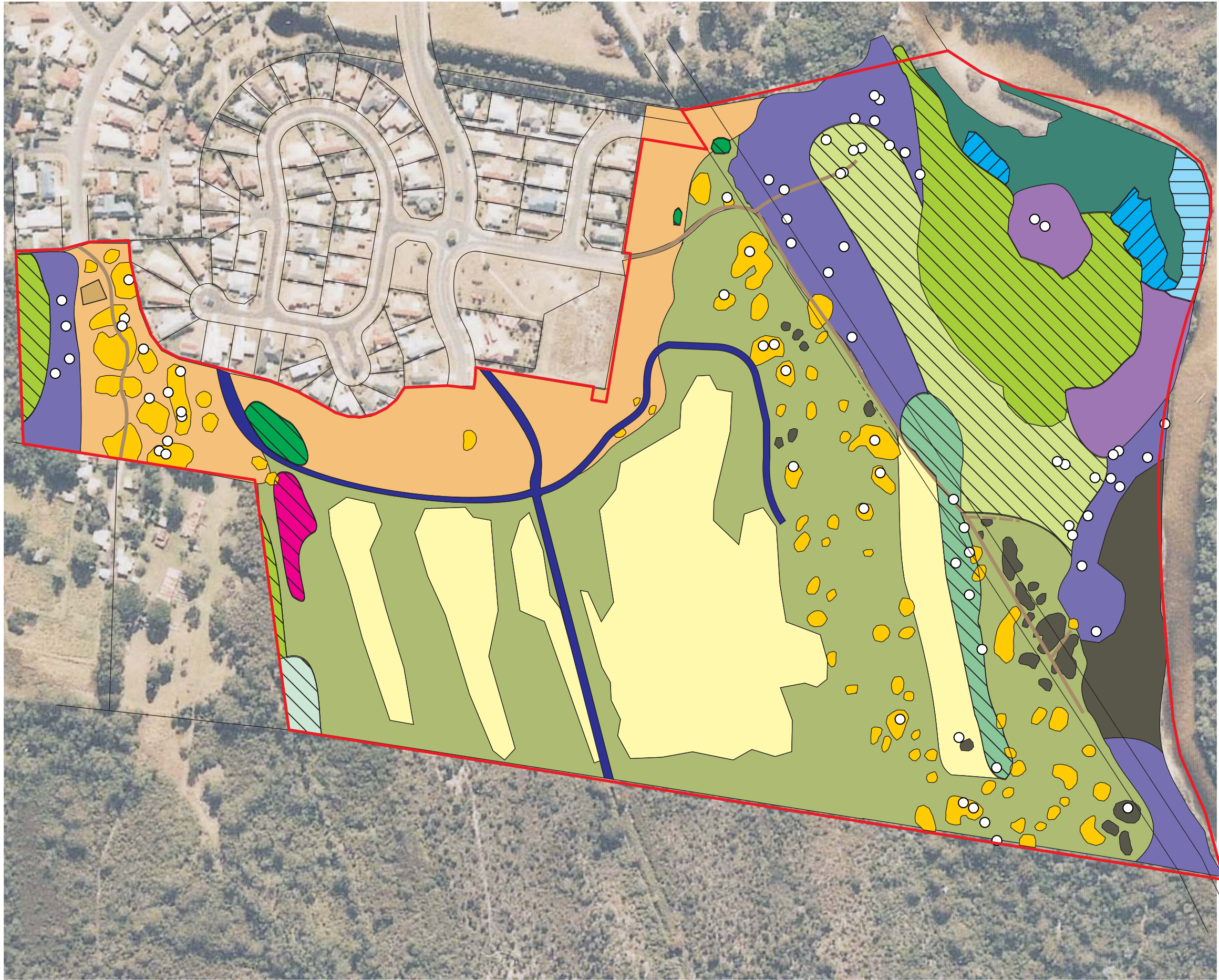
CLIENT
Codlea Pty Ltd
PROJECT
Ecological Assessment
Bayside Brunswick
Lot 73 on DP851902; Brunswick Heads, NSW
Shire of Byron

FIGURE 7

PREPARED: BW
DATE: 04 July 2011
FILE: N97066_Zoning.cdr

TITLE

**BYRON LEP
ZONING PLAN**



LEGEND

Swamp sclerophyll communities

- Community 1a - Tall closed swamp sclerophyll forest (*Eucalyptus robusta*)
- Community 1b - Tall closed swamp sclerophyll woodland (*Eucalyptus robusta*)
- Community 1c - Tall closed swamp sclerophyll forest (*Melaleuca quinquenervia*)
- Community 1d - Tall closed swamp sclerophyll forest (*Eucalyptus racemosa*, *Eucalyptus robusta*)
- Community 1e - Tall closed swamp sclerophyll forest (*Eucalyptus robusta* +/- *Melaleuca quinquenervia* / *Leptospermum polygalifolium*)
- Community 1f - Regenerating swamp sclerophyll forest (*Leptospermum polygalifolium* +/- *Melaleuca quinquenervia* / *Eucalyptus robusta*)

Dry sclerophyll communities

- Community 2a - Tall closed sclerophyll forest (*Eucalyptus racemosa*, *Endiandra sieberi*)
- Community 2b - Tall open dry sclerophyll forest (*Eucalyptus racemosa*, *Allocasuarina littoralis*, *Banksia aemula*)

Heath communities

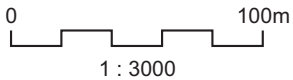
- Community 3a - Tall closed heath (*Banksia aemula* & *Allocasuarina littoralis*)
- Community 3b - Low closed slashed dry heath
- Community 3c - Low closed slashed wet heath

Estuarine communities

- Community 4a - Mid-high mid-dense mangrove forest (*Avicennia marina*, *Aegiceras corniculatum*)
- Community 4b - Mid-high forest (*Casuarina glauca* +/- *Melaleuca quinquenervia*)
- Community 4c - Brackish swamp (*Juncus kraussii* / *Acrostichum speciosum*)

Other communities

- Community 5 - Tall closed grassland (*Andropogon virginicus*)
- Community 6 - Drainage lines
- Community 7 - Scattered trees (*Eucalyptus racemosa*)
- Garden weeds
- Habitat Trees
- Track
- Swamp sclerophyll forest on coastal floodplain EEC
- Swamp oak forest floodplain forest EEC
- Coastal saltmarsh EEC
- Subject Site



SOURCE: JWA Site Investigations; Dept of Lands
2004 Aerial; Landpartners (LM080082_EV4A.pdf)
SCALE: 1 : 3000 @ A3

JAMES WARREN & ASSOCIATES PTY LIMITED
Environmental Consultants

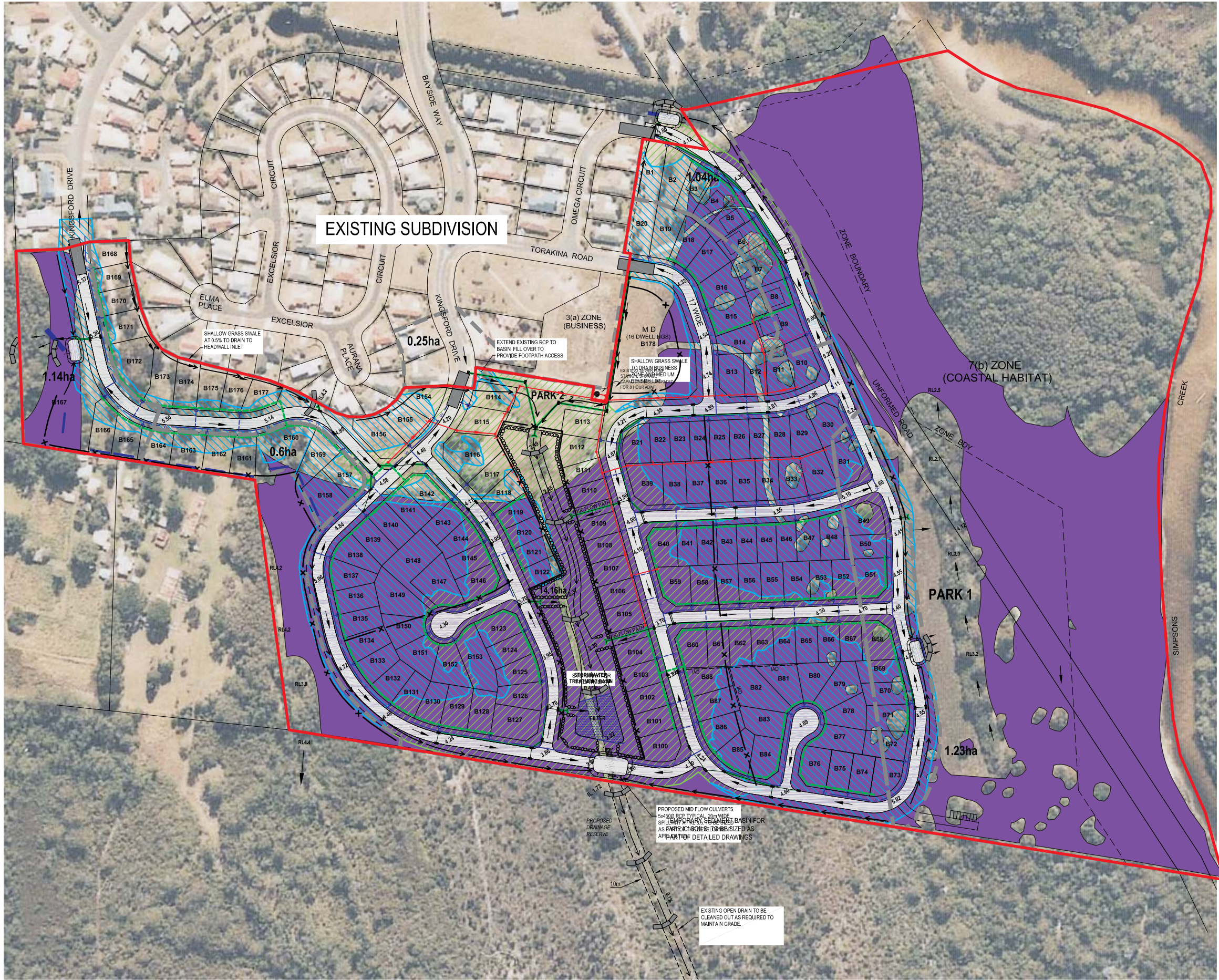
CLIENT
Codlea Pty Ltd
PROJECT
Ecological Assessment
Bayside Brunswick
Lot 73 on DP851902; Brunswick Heads, NSW
Shire of Byron

FIGURE 9

PREPARED: BW
DATE: 04 July 2011
FILE: N97066_Veg.cdr

TITLE

**EXISTING
VEGETATION
COMMUNITIES**



- LEGEND**
- Wallum vegetation (communities 1e, 1f, 2b, 3a, 3b & 3c)
 - Proposed Stormwater Network
 - Typical Drainage Flow Direction
 - Stormwater Catchment Boundary (total development catchment 19.03ha)
 - Proposed Dry Rock Retaining Wall
 - Design Surface Level
 - Bio-retention Treatment
 - Drainage Depression Area (depression around high conservation trees subsoil line to drain to stormwater system)
 - Proposed Gravity Sewer (maintenance hole & junction)
 - Proposed Low Pressure Sewer (size & layout to be confirmed)
 - Proposed Water Reticulation (100Ø typical with house connection)
 - Temporary Dry Sediment Basin SD6-3 Type 'C' Soils (with overflow weir filtered by straw bales See SD6-7)
 - Sediment Fence (See SD6-8)
 - Stabilised Site Access (See SD 5-7)
 - Straw Bale Filter (See SD6-7)
 - Sandbag Barrier (Pit Inlet Filter) (to be installed at each inlet pit) (See (SD6-11)
 - Dirty Water Catch Drain (300 Deep) (SEE SD5-5)
 - Bulk Fill Area (conceptual only)
 - Bulk Cut Area (conceptual only)
 - Subject Site

0 100m
1 : 3000

SOURCE: JWA Site Investigations; Landpartners (Ref: LM080082-DR22C.pdf; LM080082-DR23D.pdf; LM080082-DR25C.pdf & LM080082-DR26C.pdf)
SCALE: 1 : 3000 @ A3
JAMES WARREN & ASSOCIATES PTY LIMITED
Environmental Consultants

CLIENT
Codlea Pty Ltd
PROJECT
Ecological Assessment
Bayside Brunswick
Lot 73 on DP851902; Brunswick Heads, NSW
Shire of Byron

FIGURE 10
PREPARED: BW
DATE: 04 July 2011
FILE:N97066_Impact wallum veg.cdr

TITLE
IMPACT ON WALLUM VEGETATION