

LEGEND

Likely Core Wallum Froglet Habitat

Potential Wallum Froglet Forage Habitat

Approximate locations of Wallum froglet records (Woodward Clyde - Fauna Impact Statement, Oct. 1996)

Approximate locations of Wallum froglet records (JWA site investigations 2005)

Locations of Wallum froglet records (JWA gps survey April 2006)

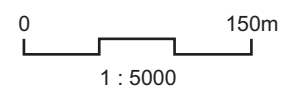
Locations of Wallum froglet records (JWA GPS survey September 2006)

Locations of Wallum froglet records (JWA GPS survey November 2008)

Locations of Wallum froglet records (JWA GPS survey September 2009)

Subject Site

Note: Likely core habitat has been determined based on areas of suitable habitat that are likely to provide adequate breeding opportunities (i.e. hold standing water for a minimum of 30 days after rainfall to allow a full breeding cycle).



SOURCE: JWA Site Investigations;
Google Earth 2006 Aerial Photograph
SCALE: 1 : 5000 @ A3

JAMES WARREN & ASSOCIATES PTY LIMITED
Environmental Consultants

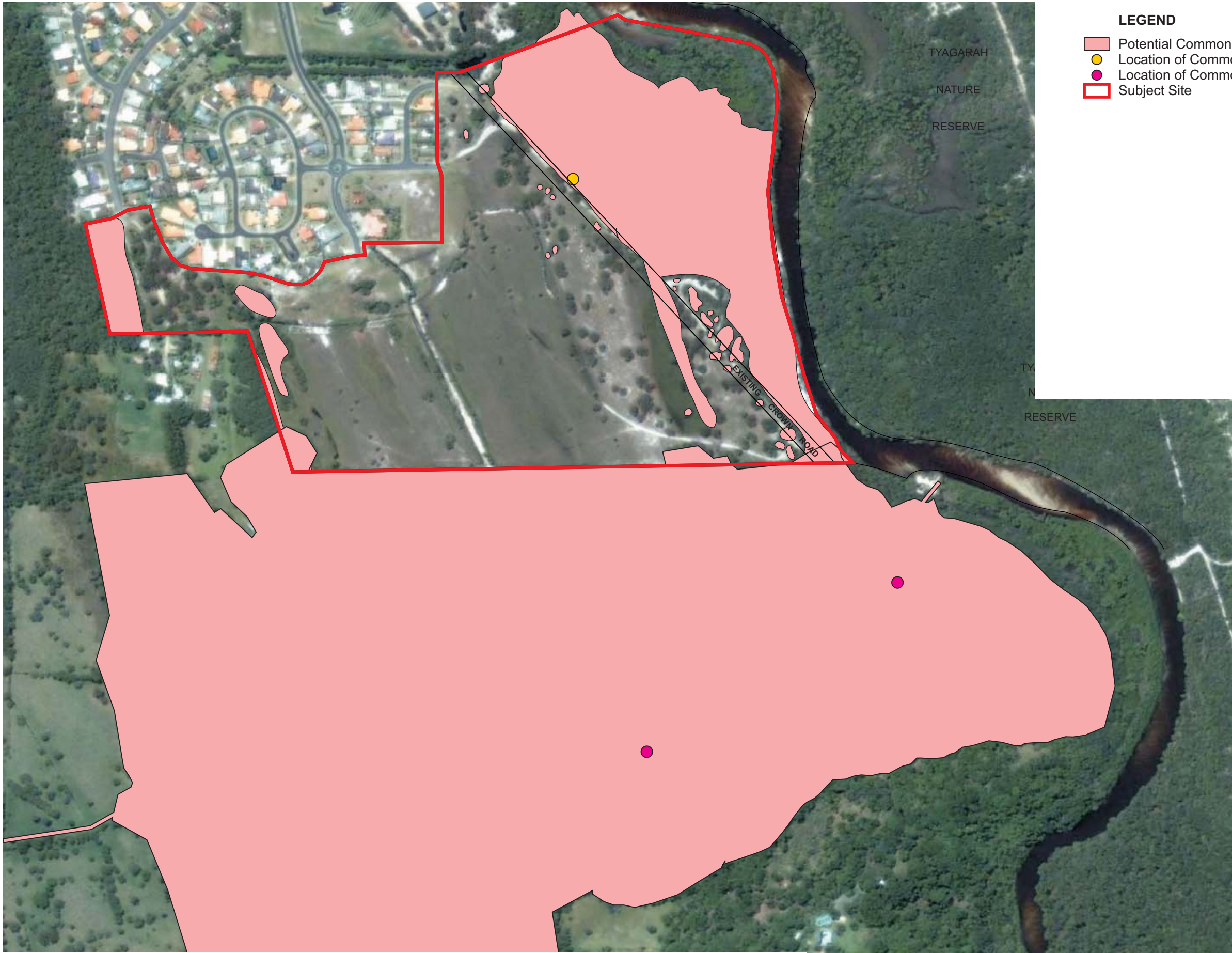
CLIENT
Codlea Pty Ltd
PROJECT
Ecological Assessment
Bayside Brunswick
Lot 73 on DP851902; Brunswick Heads, NSW
Shire of Byron

FIGURE 21

PREPARED: BW
DATE: 04 July 2011
FILE: N97066_Frogs.cdr

TITLE

**WALLUM FROGLET
RECORDS
& HABITAT**



- LEGEND**
- Potential Common planigale Habitat
 - Location of Common planigale (November 2008)
 - Location of Common planigale (September 2009)
 - Subject Site



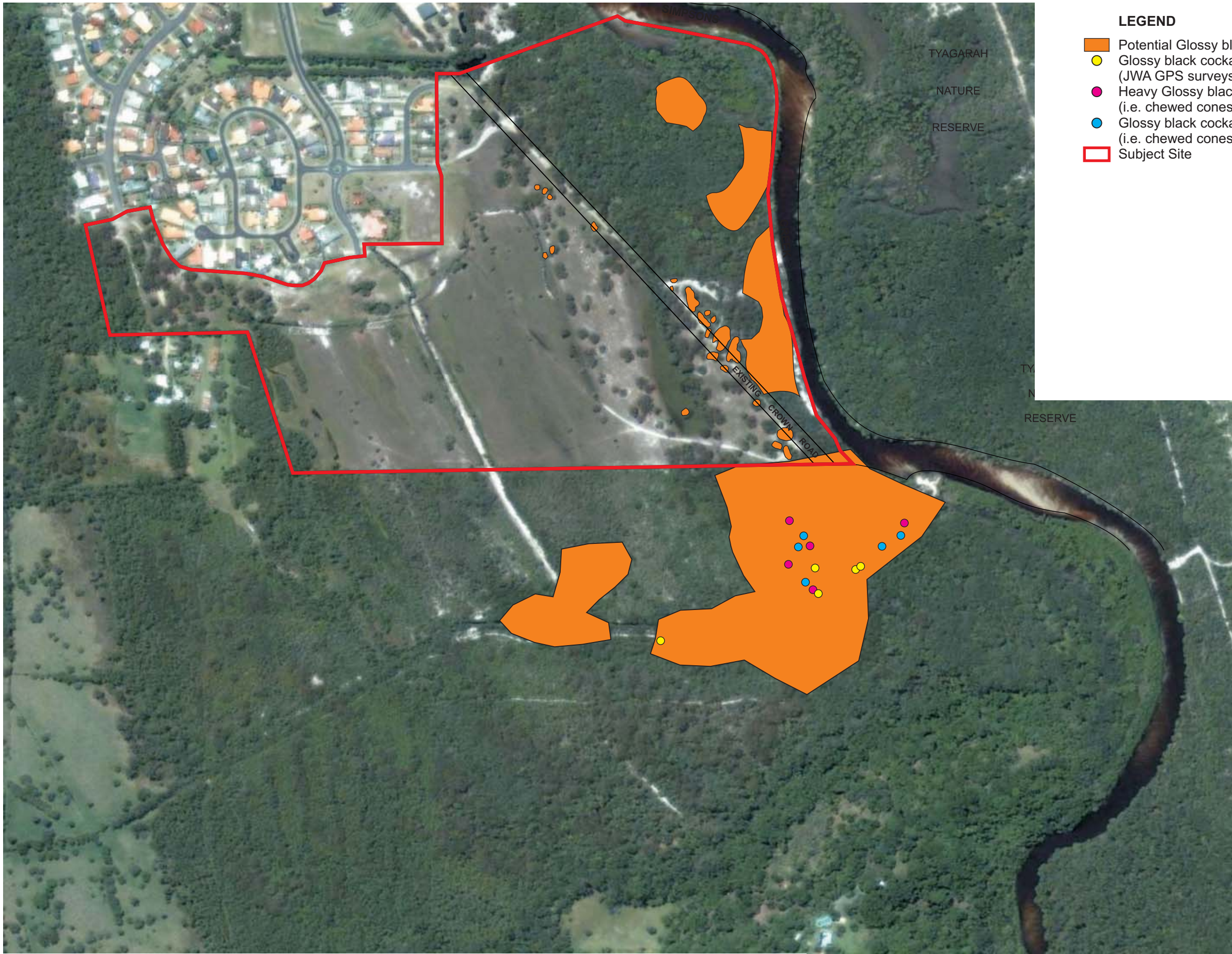
0 150m
1 : 5000

SOURCE: JWA Site Investigations;
Google Earth 2006 Aerial Photograph
SCALE: 1 : 5000 @ A3
JAMES WARREN & ASSOCIATES PTY LIMITED
Environmental Consultants

CLIENT
Codlea Pty Ltd
PROJECT
Ecological Assessment
Bayside Brunswick
Lot 73 on DP851902; Brunswick Heads, NSW
Shire of Byron

FIGURE 22
PREPARED: BW
DATE: 04 July 2011
FILE: N97066_Planigale.cdr

TITLE
**COMMON
PLANIGALE
HABITAT**



- LEGEND**
- Potential Glossy black cockatoo Habitat
 - Glossy black cockatoo observed feeding (JWA GPS surveys September 2009)
 - Heavy Glossy black cockatoo feeding activity (i.e. chewed cones) (JWA GPS surveys September 2009)
 - Glossy black cockatoo feeding activity (i.e. chewed cones) (JWA GPS surveys September 2009)
 - Subject Site



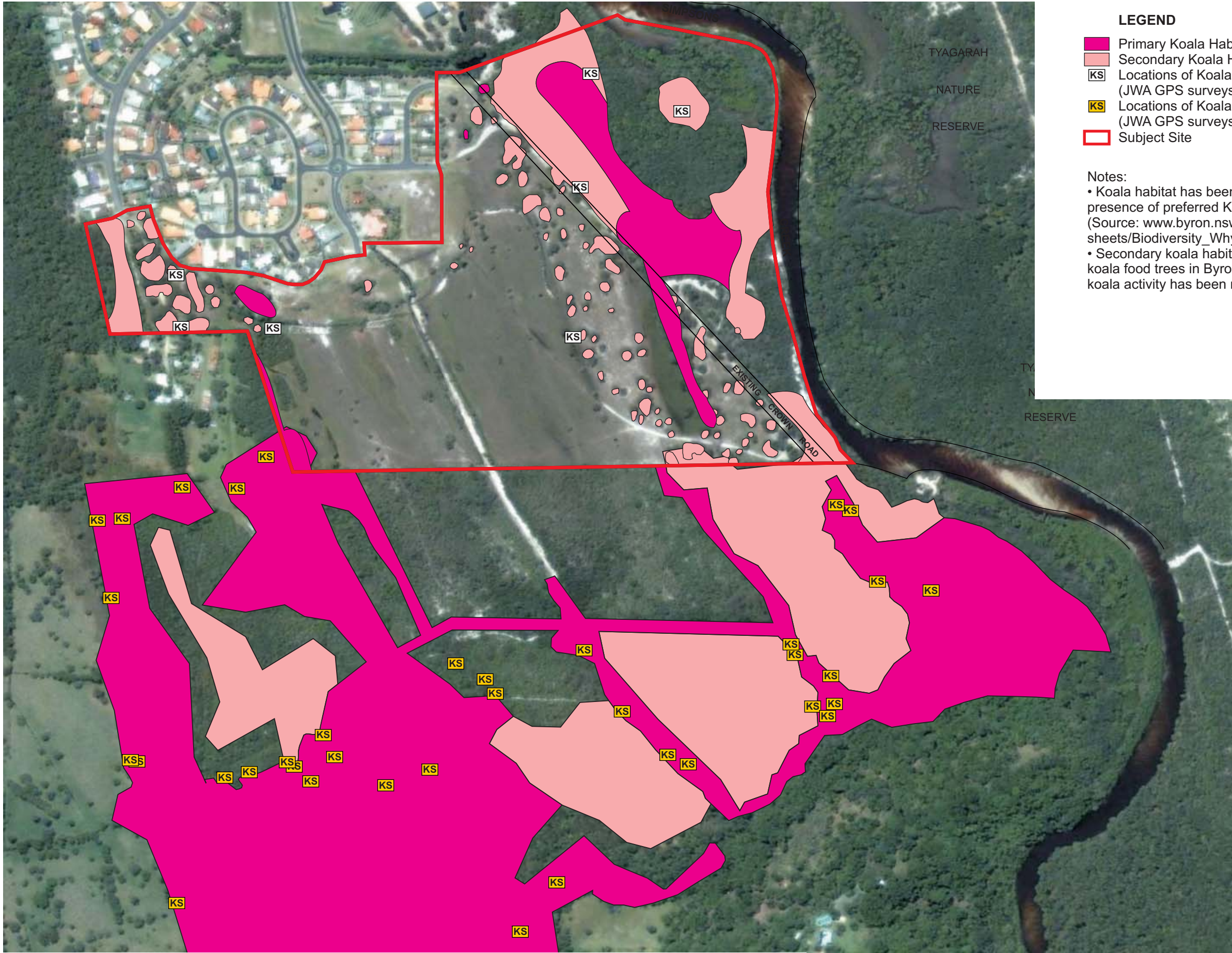
0 150m
1 : 5000

SOURCE: JWA Site Investigations;
Google Earth 2006 Aerial Photograph
SCALE: 1 : 5000 @ A3
JAMES WARREN & ASSOCIATES PTY LIMITED
Environmental Consultants

CLIENT
Codlea Pty Ltd
PROJECT
Ecological Assessment
Bayside Brunswick
Lot 73 on DP851902; Brunswick Heads, NSW
Shire of Byron

FIGURE 23
PREPARED: BW
DATE: 04 July 2011
FILE: N97066_GBC.cdr

TITLE
**GLOSSY BLACK
COCKATOO
HABITAT**



LEGEND

Primary Koala Habitat

Secondary Koala Habitat

KS

Locations of Koala Scat
(JWA GPS surveys April 2006 - Nov2008 & May 2009)

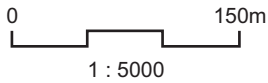
KS

Locations of Koala Scat
(JWA GPS surveys September 2009)

Subject Site

Notes:

- Koala habitat has been determined based on the presence of preferred Koala food trees in Byron Shire (Source: www.byron.nsw.gov.au/files/publications/fact-sheets/Biodiversity_Why_Are_Trees_Important.pdf)
- Secondary koala habitat does not contain preferred koala food trees in Byron Shire however, evidence of koala activity has been recorded.



SOURCE: JWA Site Investigations;
Google Earth 2006 Aerial Photograph
SCALE: 1 : 5000 @ A3

JAMES WARREN & ASSOCIATES PTY LIMITED
Environmental Consultants

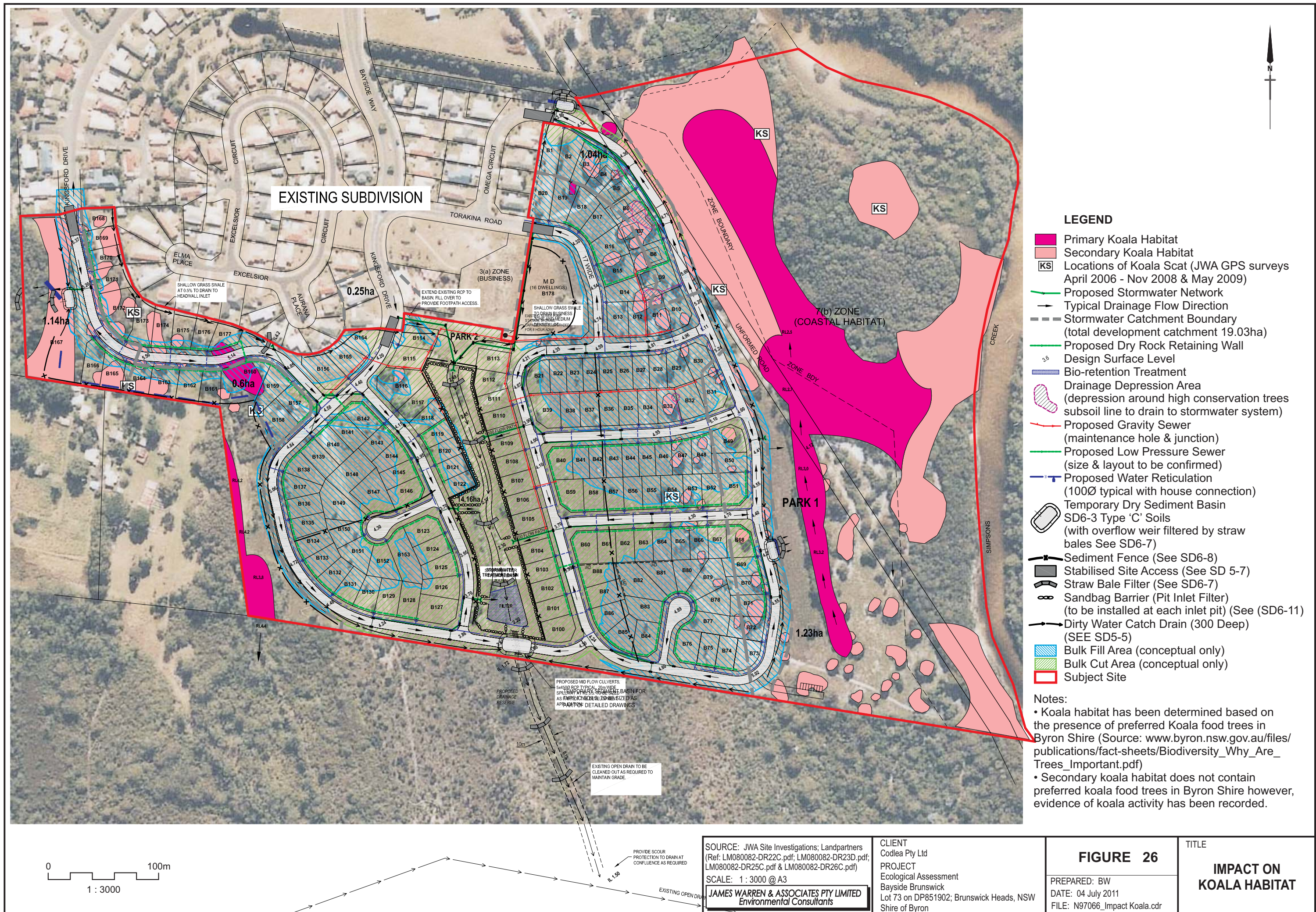
CLIENT
Codlea Pty Ltd
PROJECT
Ecological Assessment
Bayside Brunswick
Lot 73 on DP851902; Brunswick Heads, NSW
Shire of Byron

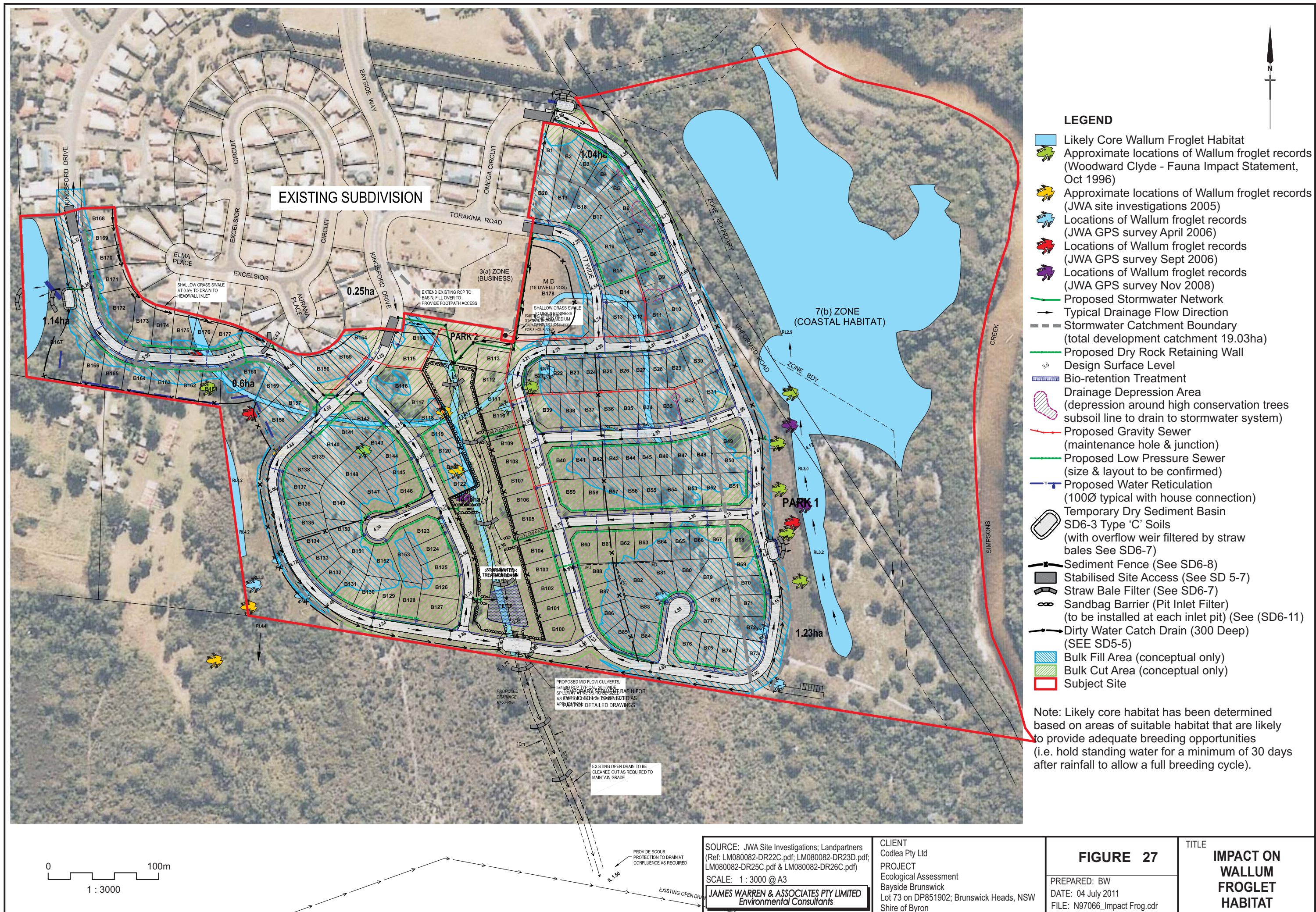
FIGURE 24

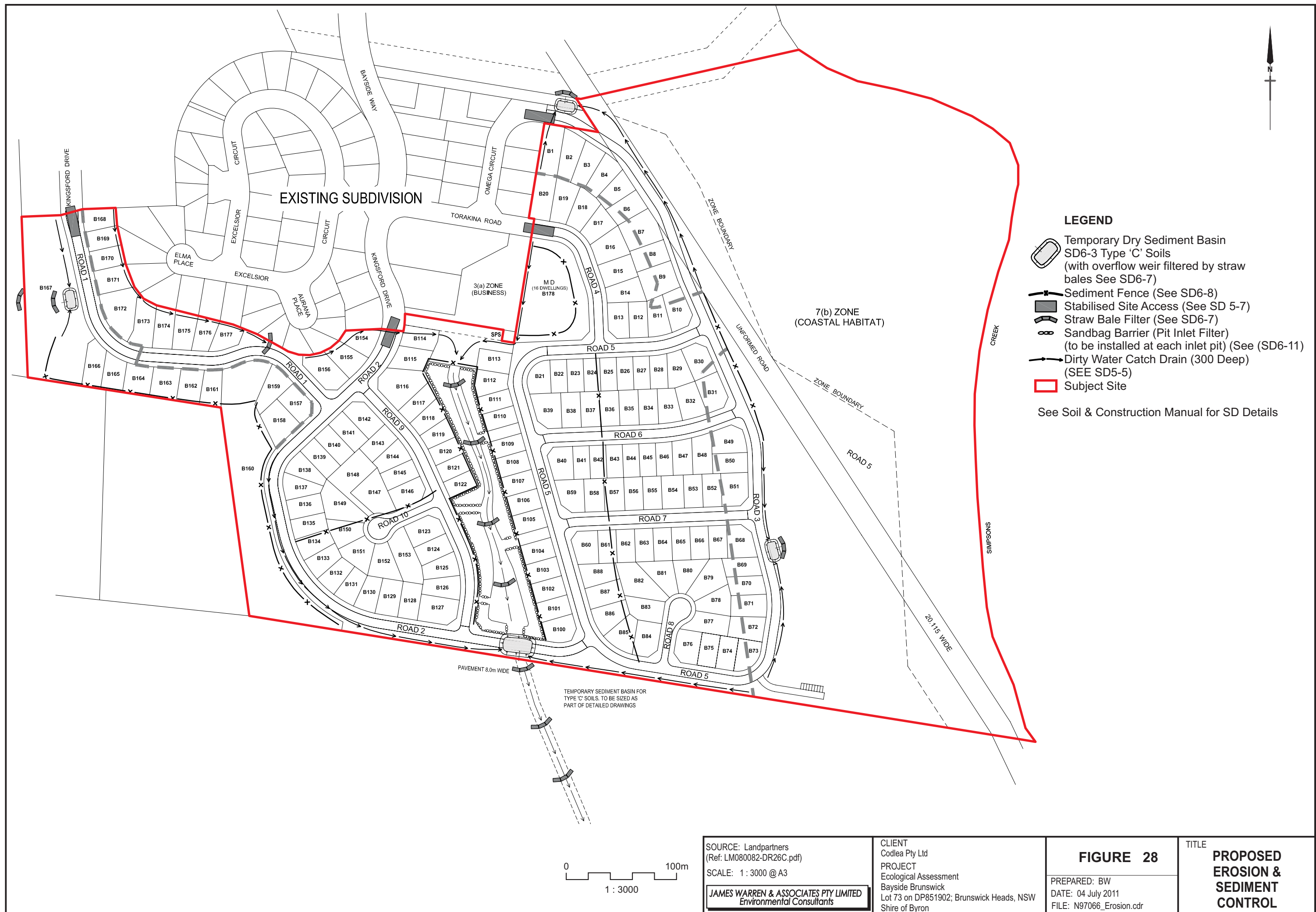
PREPARED: BW
DATE: 04 July 2011
FILE: N97066_Koala.cdr

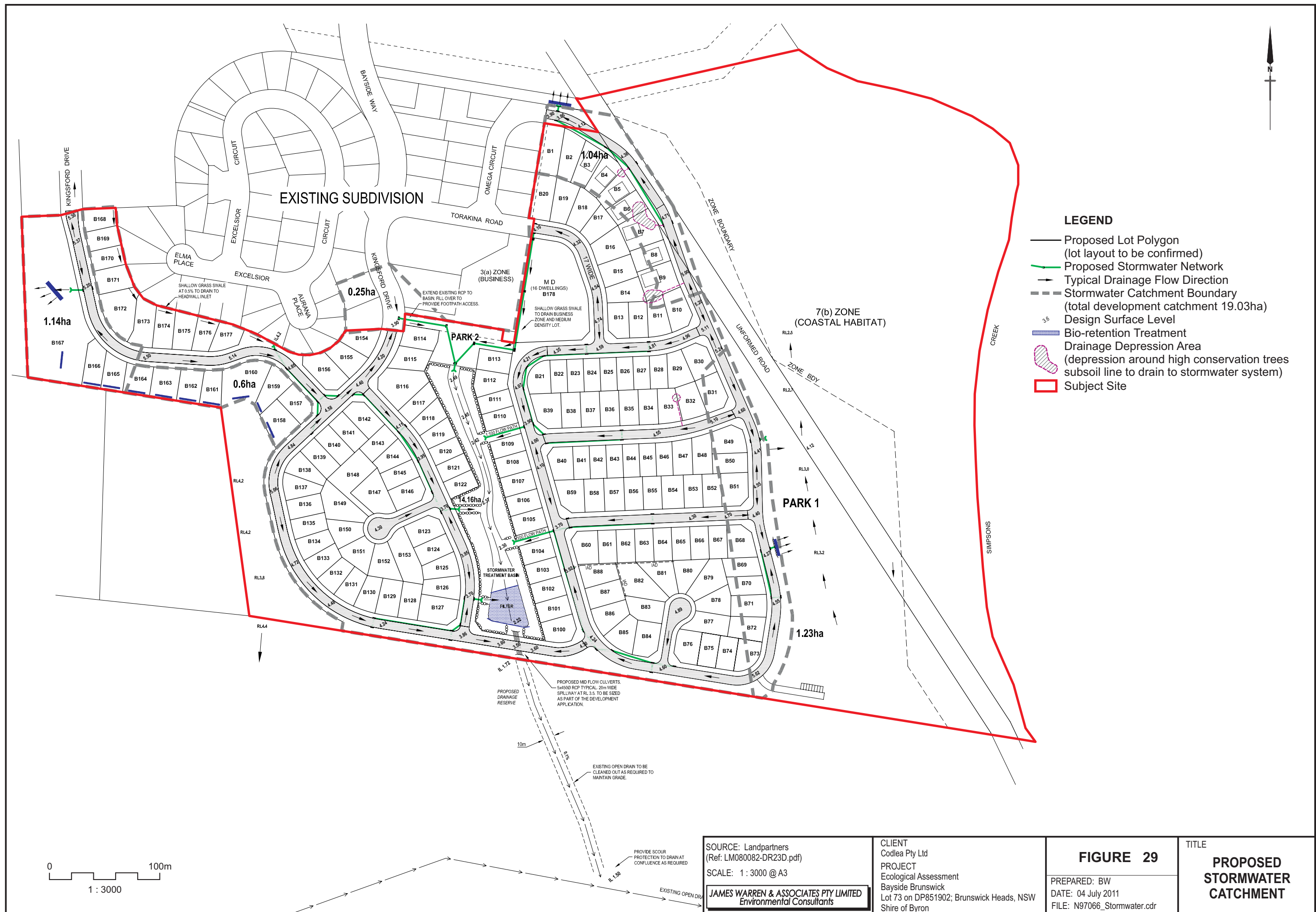
TITLE

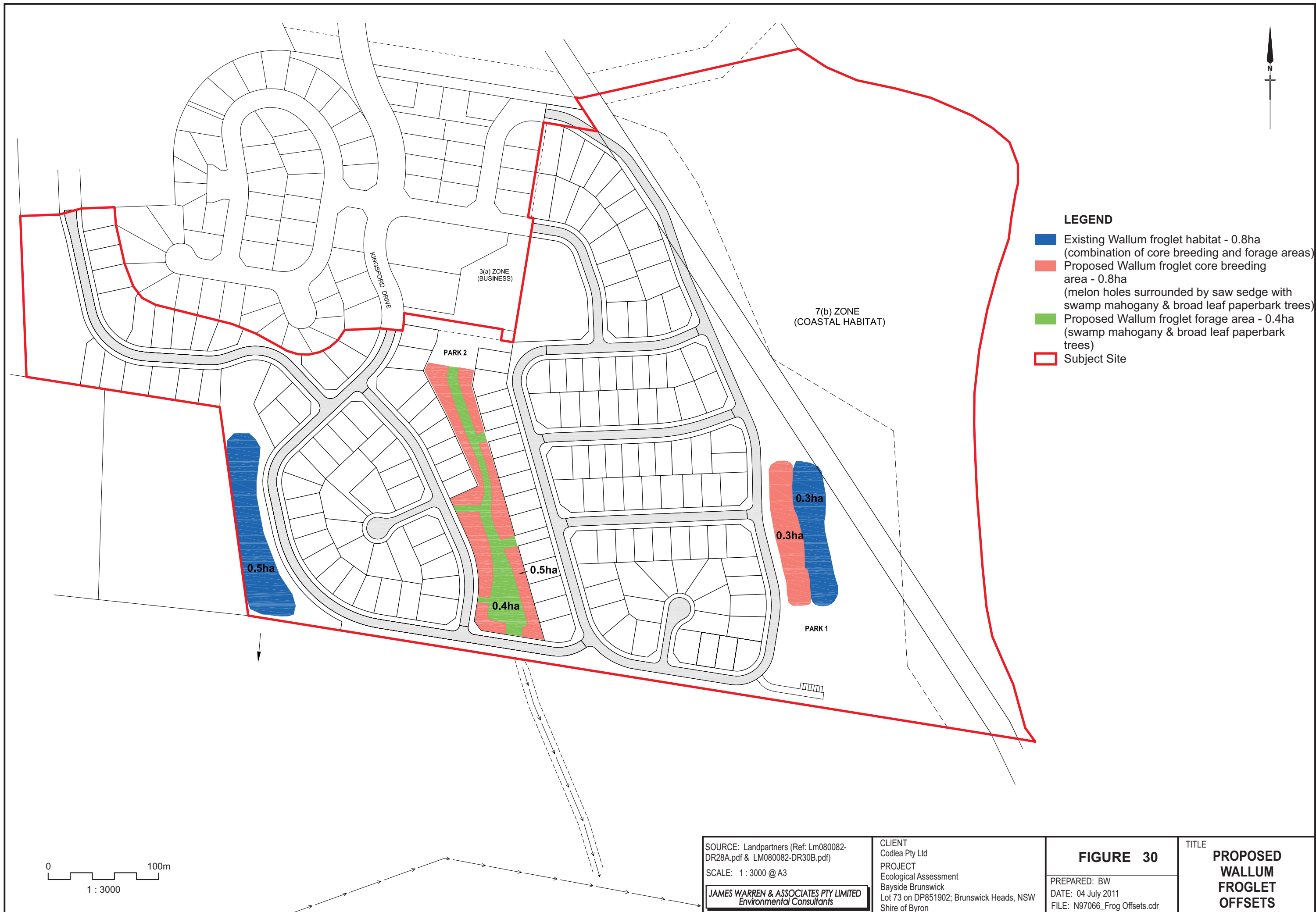
KOALA
HABITAT

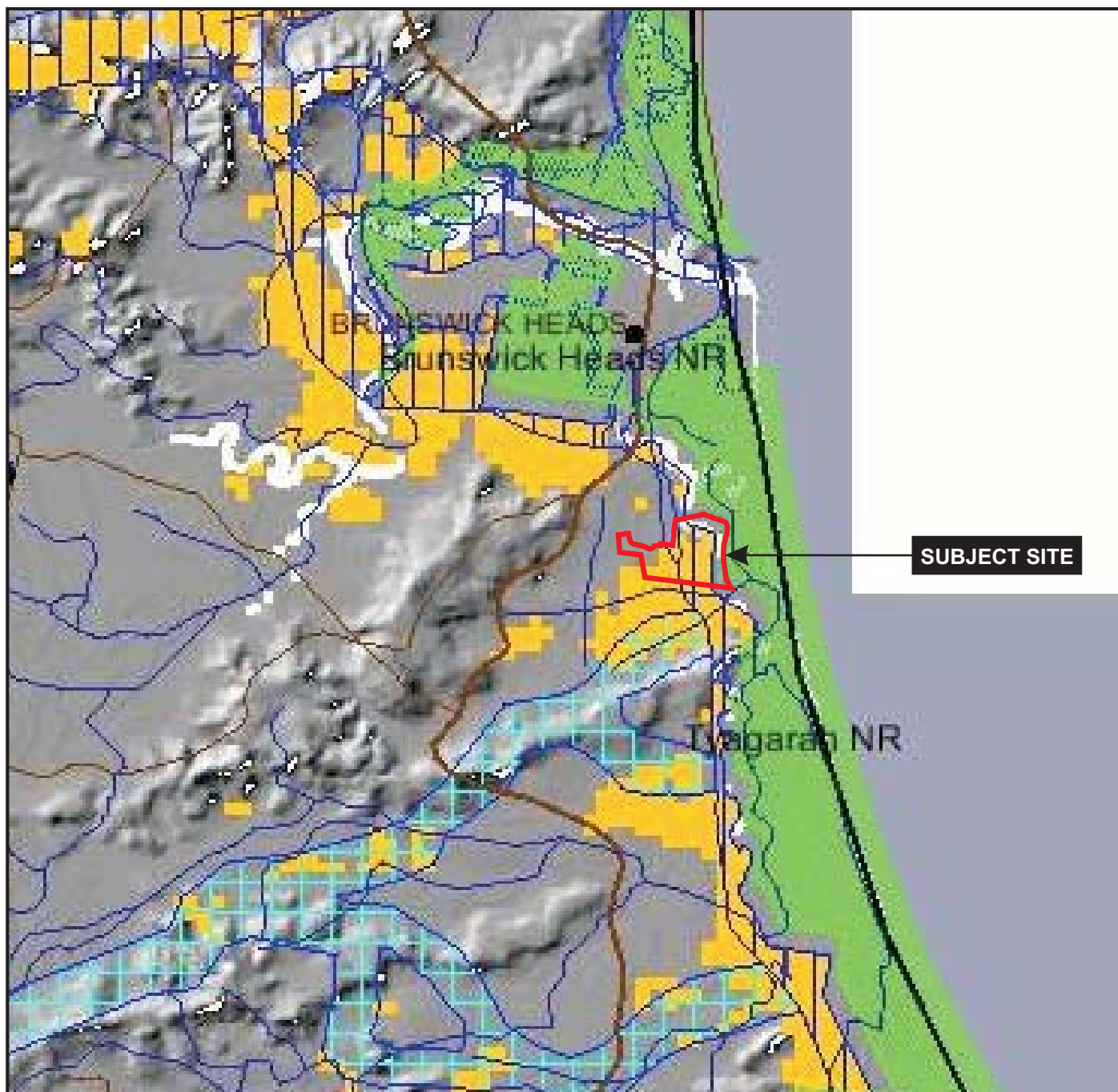












LEGEND

-  Regional Corridor
-  Subregional Corridor
-  Key Habitat
-  Nature Reserve
-  Regional Park
-  State Forest
-  Rivers
-  Main Roads
-  Minor Roads
-  Wooded Vegetation
-  Subject Site

0 1.5km



SOURCE: NPWS Key Habitats & Corridors
(website accessed 09.04.09)

SCALE: 1 : 50 000 @ A4

JAMES WARREN & ASSOCIATES PTY LIMITED
Ecological Consultants

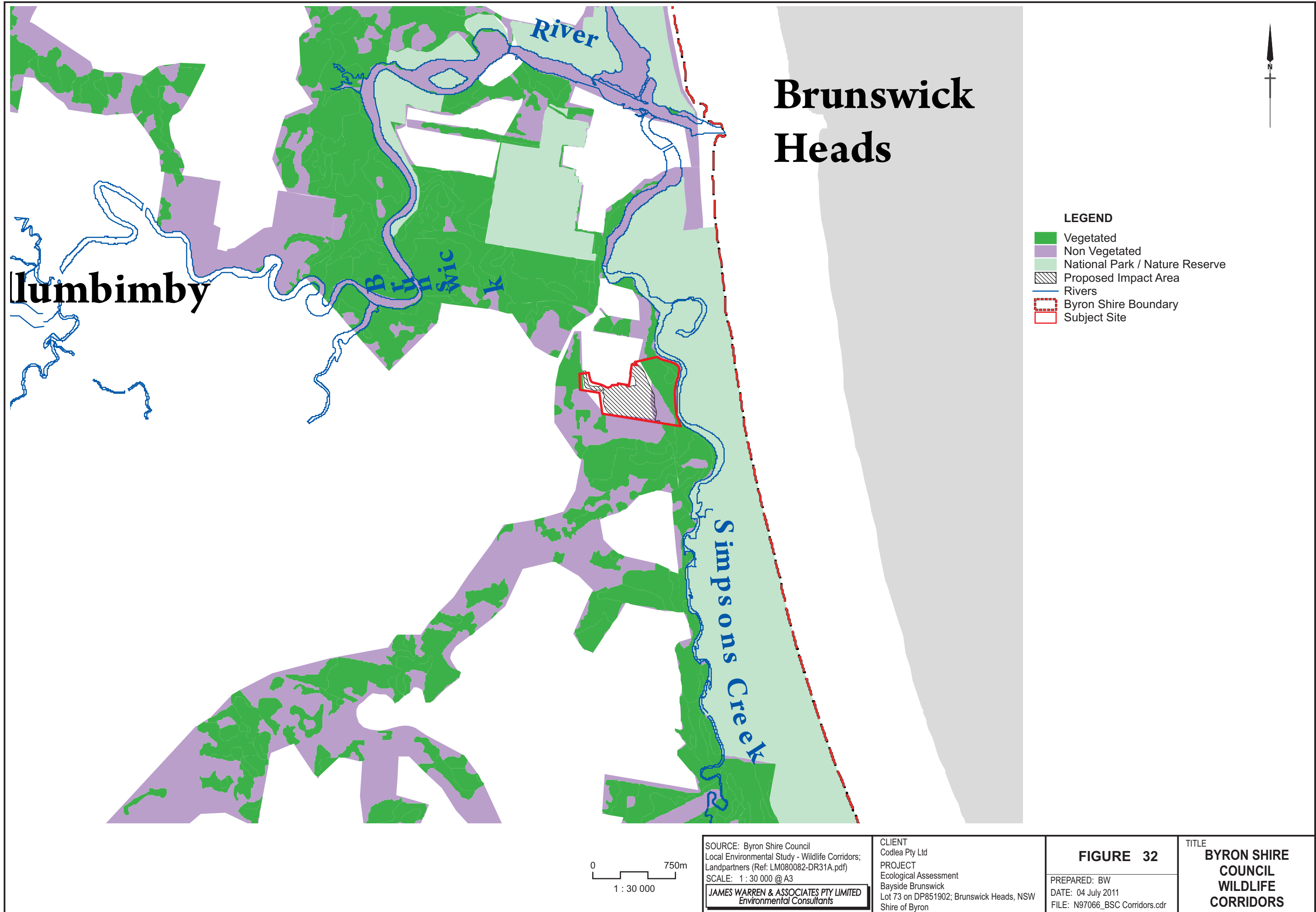
CLIENT
Codlea Pty Ltd
PROJECT
Ecological Assessment
Bayside Brunswick
Lot 73 on DP851902; Brunswick Heads, NSW
Shire of Byron

FIGURE 31

PREPARED: BW
DATE: 04 July 2011
FILE: N97066_Corridors.cdr

TITLE

**NPWS
KEY HABITATS
& CORRIDORS**





LEGEND

- Simpson's Creek Corridor
- Western Corridor
- Stage 4A Corridor
- Stage 4A Boundary
- Subject Site

0 300m
1 : 10 000

SOURCE: JWA Site Investigations;
Google Earth 2010 Aerial Photograph
SCALE: 1 : 10 000 @ A3

JAMES WARREN & ASSOCIATES PTY LIMITED
Environmental Consultants

CLIENT
Codlea Pty Ltd
PROJECT
Ecological Assessment
Bayside Brunswick
Lot 73 on DP851902; Brunswick Heads, NSW
Shire of Byron

FIGURE 33

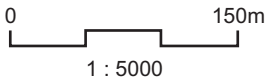
PREPARED: BW
DATE: 04 July 2011
FILE: N97066_Corridor Assess.cdr

TITLE
**CORRIDOR
ASSESSMENT**



LEGEND

- # Location & direction of photo points
- Subject Site



SOURCE: JWA Site Investigations;
Google Earth 2009 Aerial
SCALE: 1 : 5000 @ A3
JAMES WARREN & ASSOCIATES PTY LIMITED
Environmental Consultants

CLIENT
Codlea Pty Ltd
PROJECT
Ecological Assessment
Bayside Brunswick
Lot 73 on DP851902; Brunswick Heads, NSW
Shire of Byron

FIGURE 34

PREPARED: BW
DATE: 04 July 2011
FILE: N97066_Photo Points.cdr

TITLE

**PHOTO
POINTS**