

SOURCE: Civil Tech Consulting Engineers

SCALE: Not to Scale

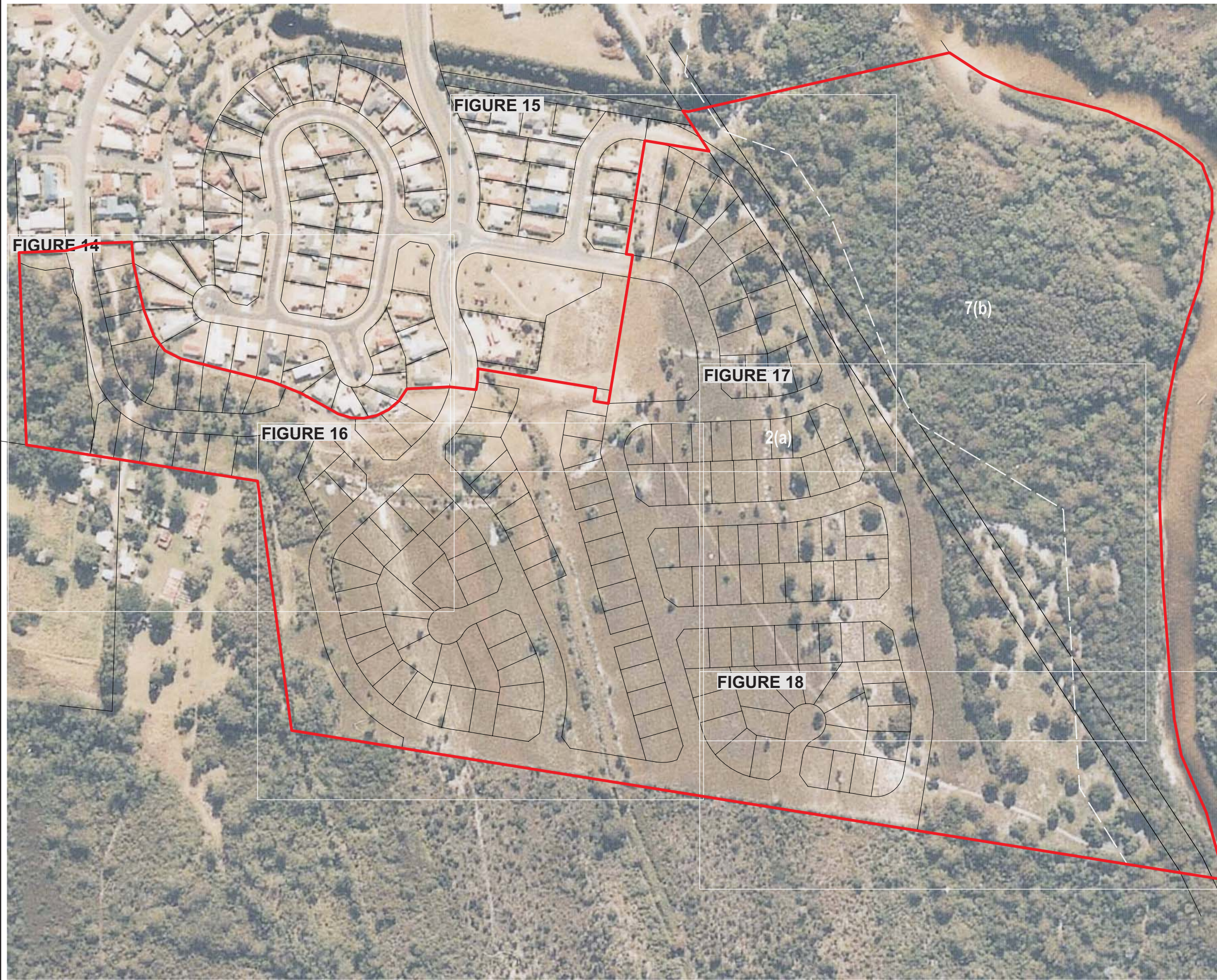
JAMES WARREN & ASSOCIATES PTY LIMITED
Environmental Consultants


CLIENT
Codlea Pty Ltd
PROJECT
Ecological Assessment
Bayside Brunswick
Lot 73 on DP851902; Brunswick Heads, NSW
Shire of Byron

FIGURE 12


PREPARED: BW
DATE: 04 July 2011
FILE: N97066_Tree Retention.cdr

TITLE
**EXAMPLES OF
TREE
RETENTION**



LEGEND
 Subject Site



0  100m
 1 : 3000

SOURCE: Landpartners
 (Ref: LM080082-TR1A.pdf)
 SCALE: 1 : 3000 @ A3

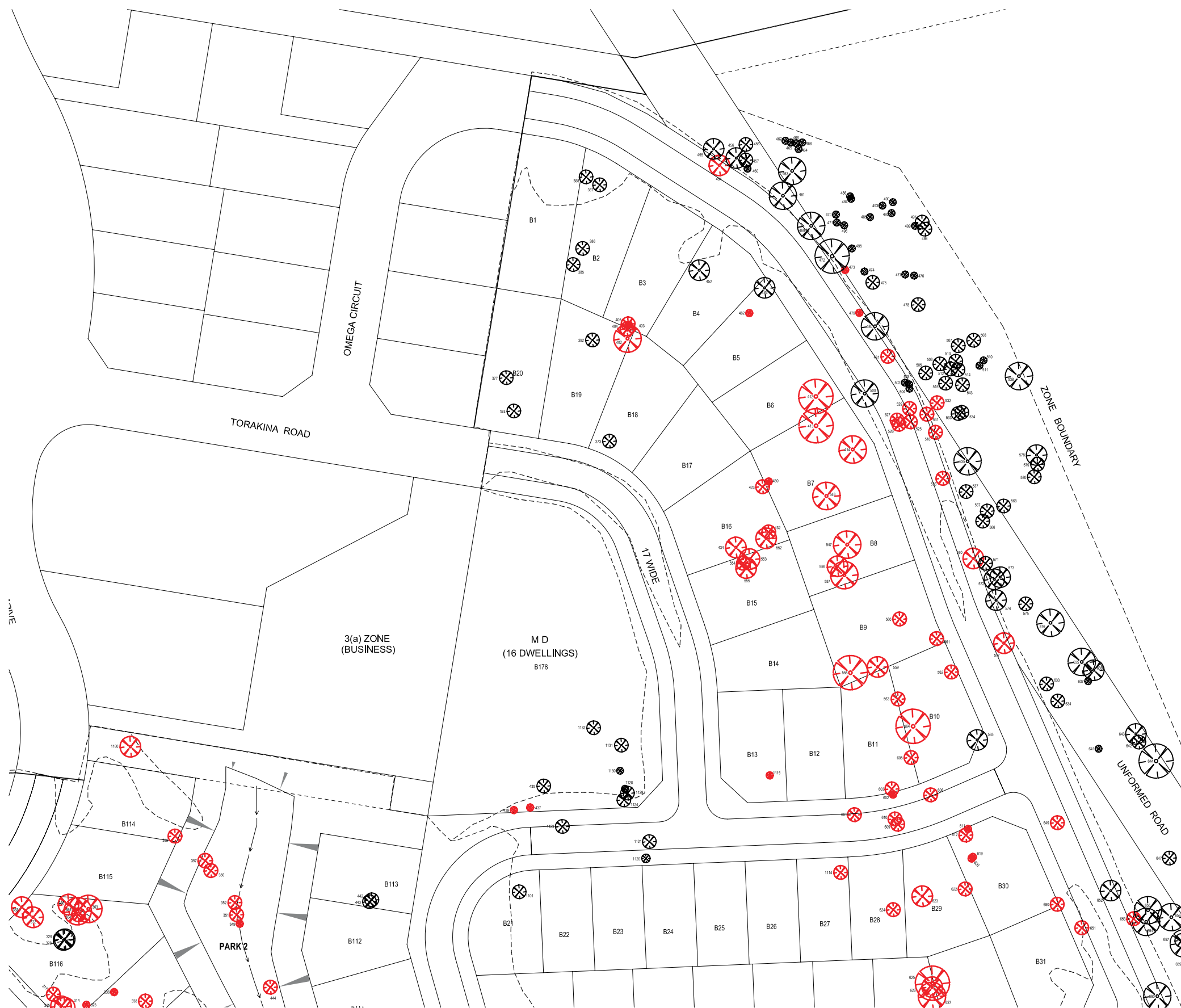
JAMES WARREN & ASSOCIATES PTY LIMITED
 Environmental Consultants

CLIENT
 Codlea Pty Ltd
 PROJECT
 Ecological Assessment
 Bayside Brunswick
 Lot 73 on DP851902; Brunswick Heads, NSW
 Shire of Byron

FIGURE 13

PREPARED: BW
 DATE: 04 July 2011
 FILE: N97066_TRP.cdr

TITLE
**TREE
 RETENTION
 PLAN**



LEGEND

- Tree to be Retained
- Tree to be Removed
- Cut/Fill Line

0 25m
1 : 1 250

SOURCE: Landpartners
(Ref: LM080082-TR3A.pdf)
SCALE: 1 : 1250 @ A3

JAMES WARREN & ASSOCIATES PTY LIMITED
Environmental Consultants

CLIENT
Codlea Pty Ltd
PROJECT
Ecological Assessment
Bayside Brunswick
Lot 73 on DP851902; Brunswick Heads, NSW
Shire of Byron

FIGURE 15

PREPARED: BW
DATE: 04 July 2011
FILE: N97066_TRP(B).cdr

TITLE
**TREE
RETENTION
PLAN**



LEGEND

⊗ Tree to be Retained
⊗ Tree to be Removed
--- Cut/Fill Line



SOURCE: Landpartners (Ref: LM080082-TR4A.pdf) SCALE: 1 : 1250 @ A3 JAMES WARREN & ASSOCIATES PTY LIMITED Environmental Consultants	CLIENT Codlea Pty Ltd PROJECT Ecological Assessment Bayside Brunswick Lot 73 on DP851902; Brunswick Heads, NSW Shire of Byron	FIGURE 16	TITLE
		PREPARED: BW DATE: 04 July 2011 FILE: N97066_TRP(C).cdr	TREE RETENTION PLAN



- LEGEND**
- Tree to be Retained
 - Tree to be Removed
 - Cut/Fill Line
 - Proposed significant trees offset area (1.2ha)

0 25m
1 : 1 250

SOURCE: Landpartners
(Ref: LM080082-TR5A.pdf)
SCALE: 1 : 1250 @ A3

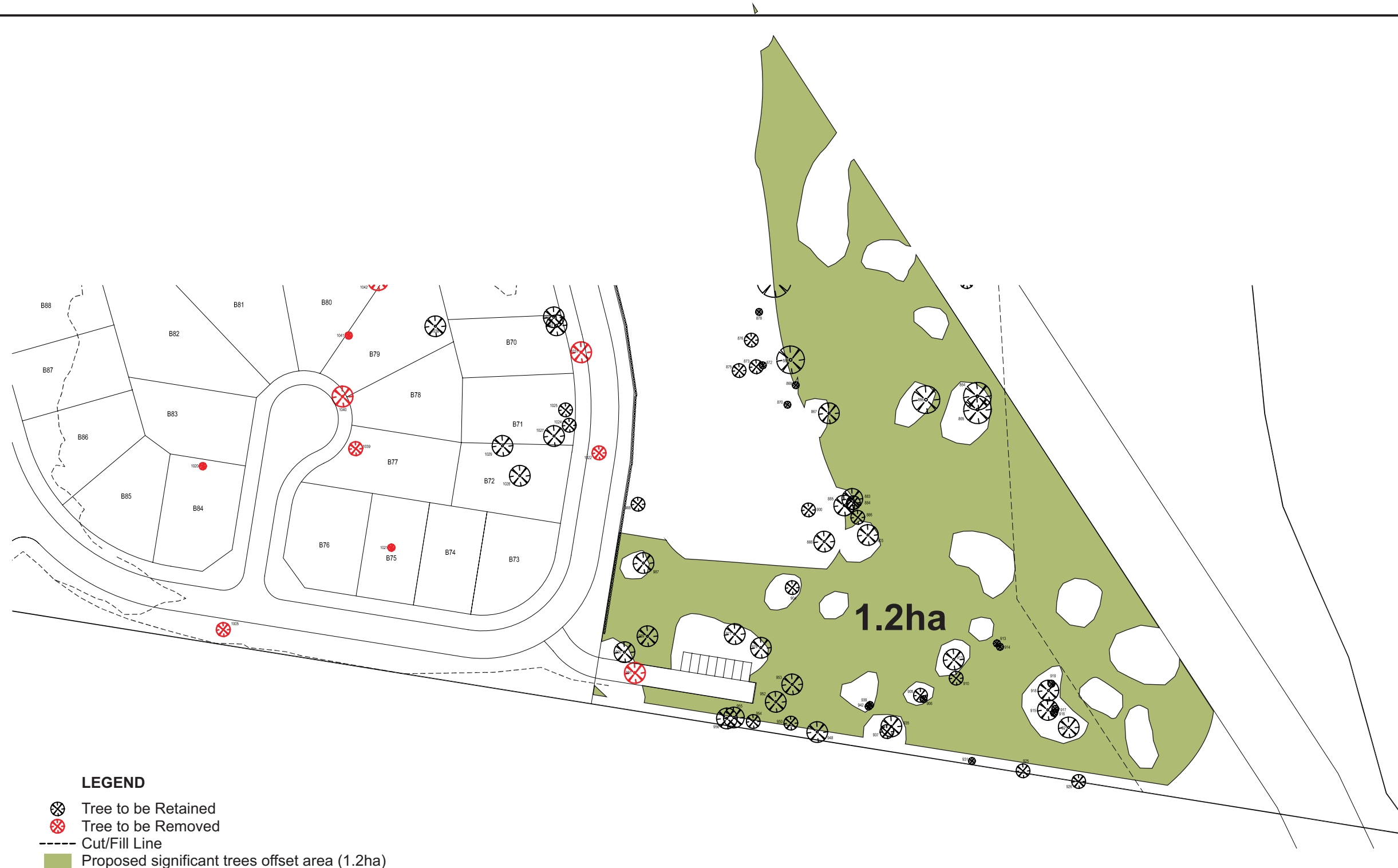
JAMES WARREN & ASSOCIATES PTY LIMITED
Environmental Consultants

CLIENT
Codlea Pty Ltd
PROJECT
Ecological Assessment
Bayside Brunswick
Lot 73 on DP851902; Brunswick Heads, NSW
Shire of Byron



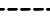

FIGURE 17

PREPARED: BW
DATE: 04 July 2011
FILE: N97066_TRP(D).cdr

TITLE
**TREE
RETENTION
PLAN**



LEGEND

-  Tree to be Retained
-  Tree to be Removed
-  Cut/Fill Line
-  Proposed significant trees offset area (1.2ha)

0 25m
1 : 1 250

SOURCE: Landpartners
(Ref: LM080082-TR6A.pdf)
SCALE: 1 : 1250 @ A3

JAMES WARREN & ASSOCIATES PTY LIMITED
Environmental Consultants

CLIENT
Codlea Pty Ltd
PROJECT
Ecological Assessment
Bayside Brunswick
Lot 73 on DP851902; Brunswick Heads, NSW
Shire of Byron

FIGURE 18

PREPARED: BW
DATE: 04 July 2011
FILE: N97066_TRP(E).cdr

TITLE

**TREE
RETENTION
PLAN**

