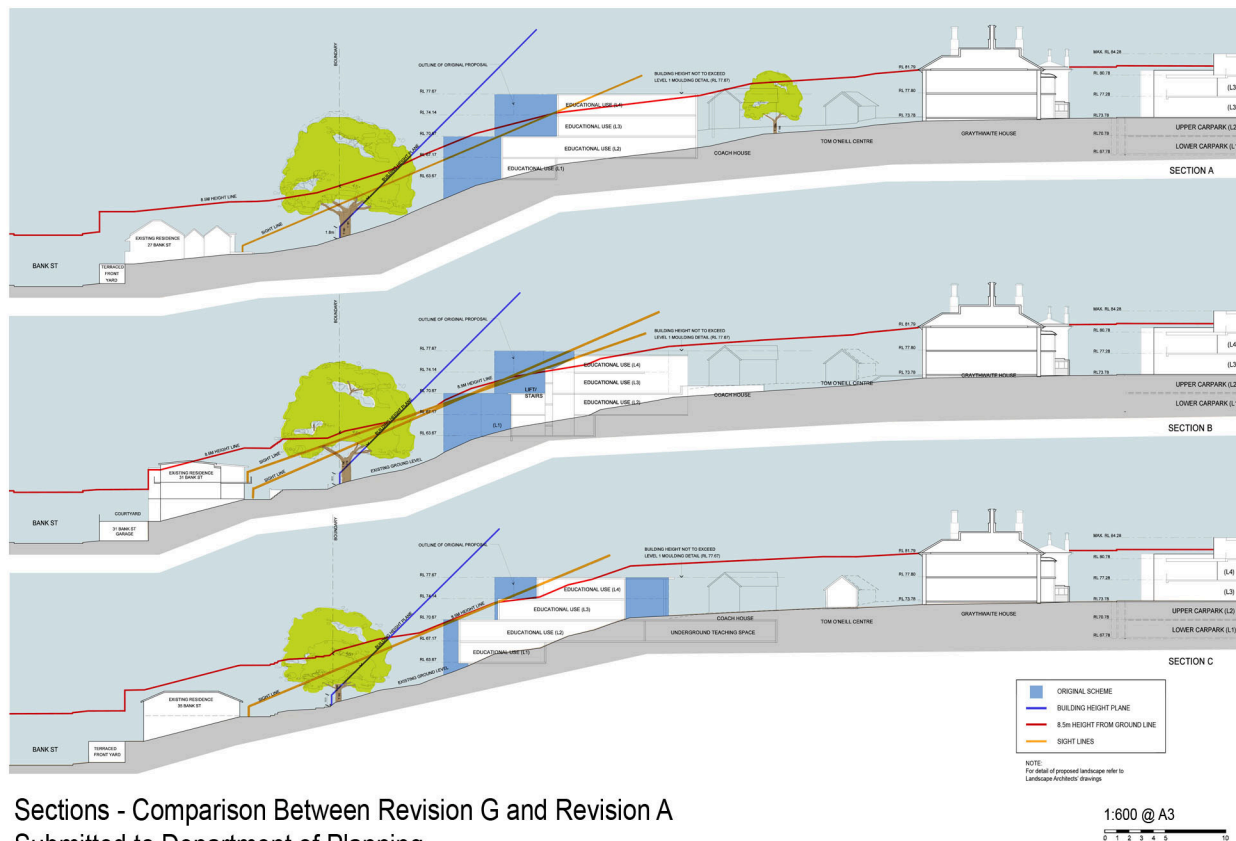


Roof Plan - Comparison Between Revision G and Revision A
Submitted to Department of Planning

Revised West Building - Comparison Between Revision A 9.11.2010 and Current Proposal Revision G

- Floor area reduction approximately 400m² (bulk)
- Western interface reduced to 2 storeys (height)
- Western setbacks adjusted east (twice)
- East boundary near Coach House moved
- Re-designed acoustically to meet standards
- Window design avoids overlooking to west
- East only pedestrian entry/exit
- Relocated building reduces shadows
- Location poles erected by survey for meeting with residents on 22.06.11
- Poles re-erected for Revised EA
- Scientifically generated montages show mitigated views with additional Stage 1 plantings



Sections - Comparison Between Revision G and Revision A
Submitted to Department of Planning



Aerial Photo with Proposed West Building Overlay

LEGEND: Difference Between Revision A and Revision G