

GRAYTHWAITE, SYDNEY CHURCH OF ENGLAND GRAMMAR SCHOOL

20 EDWARD STREET, NORTH SYDNEY

LANDSCAPE ARCHITECTURE DRAWING LIST

DWG NO.	DRAWING TITLE	SCALE
LT.000 (D)	TITLE SHEET	N.T.S.
CONCEPT PLAN APPLICATION		
LT.001 (E)	LANDSCAPE MASTER PLAN	1:500
LT.002 (E)	LANDSCAPE PLAN- NORTH	1:200
STAGE 1 PROJECT APPLICATION		
LT.003 (D)	TREE REMOVAL AND RETENTION PLAN	1:500
LT.004 (C)	EXISTING TREE SCHEDULE- HERITAGE SIGNIFICANCE & ACTION	NTS
LT.005 (C)	LANDSCAPE HARDWORKS	1:500
LT.006 (C)	LANDSCAPE SOFTWORKS	1:500
LT.007 (C)	LANDSCAPE TREE PLAN	1:500
LT.008 (C)	LANDSCAPE LIGHTING PLAN	1:500
LT.009 (A)	LANDSCAPE DETAILS	AS NOTED
EARLY WORKS		
LT.010 (B)	EARLY WORKS PLANTING	1:200
LT.011 (B)	EARLY WORKS LANDSCAPE DETAILS	AS NOTED

HISTORIC IMAGES OF GRAYTHWAITE



Rear gardens c1897



View across tennis courts c1890



South east corner c1897



View from Union St c1890

LEGEND

- SITE BOUNDARY
- EXISTING TREE RETAINED
- BONDED GRAVEL DRIVE
- PROPOSED BRICK UNIT PAVING
- PROPOSED TREE
- PROPOSED SHRUBS
- PROPOSED GROUNDCOVERS
- TURF
- BUSHLAND SETTING

SUPPLEMENTARY PLANTING

RETAIN AND INTERPRET EXISTING WELL

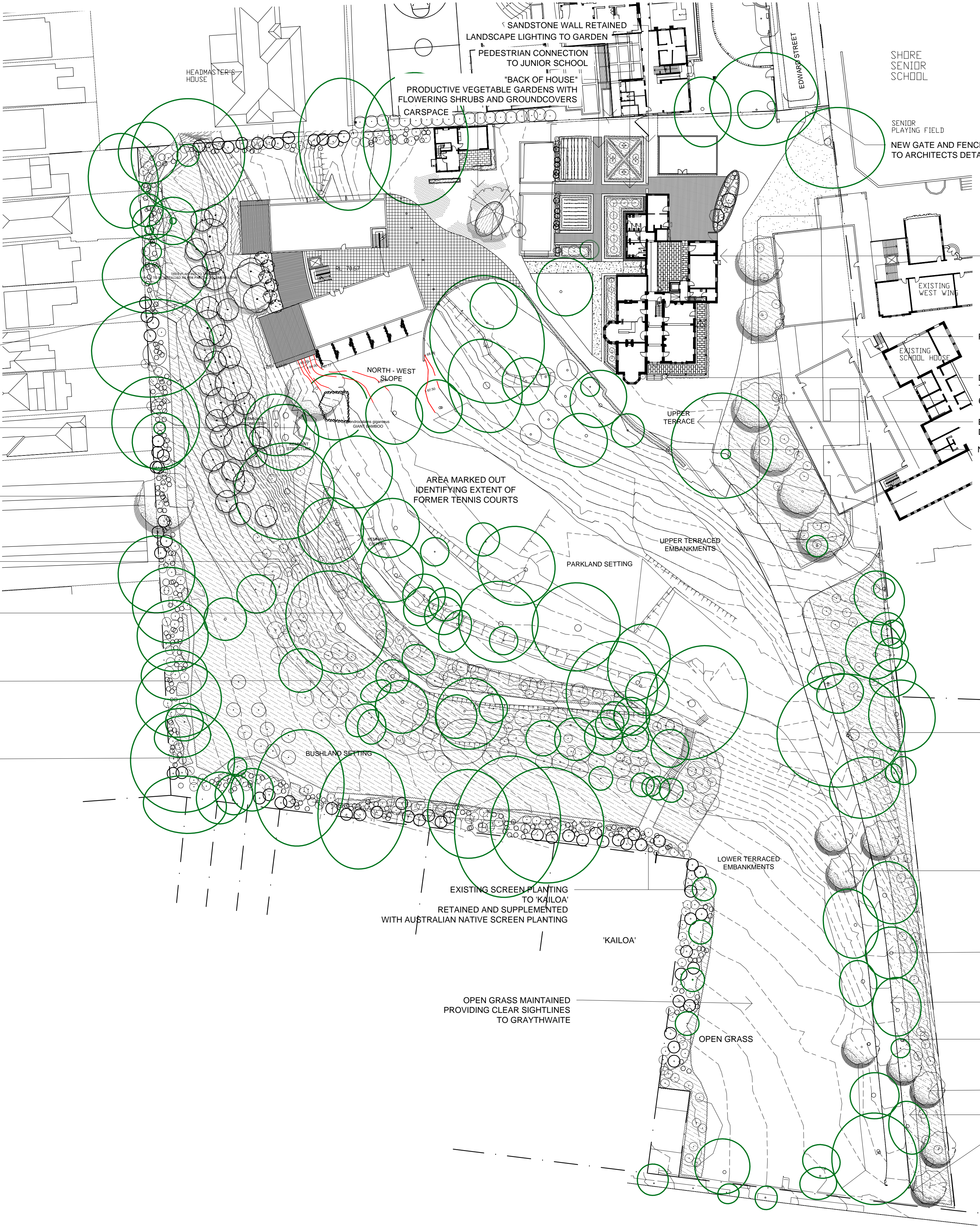
SUPPLEMENTARY PLANTING TO NEIGHBOURING PROPERTIES

REMOVE WEED SPECIES
AUSTRALIAN NATIVE LAYERED REPLACEMENT PLANTING
ARBORICULTURAL AND ECOLOGICAL SCHOOL RESOURCE

RETAIN EXISTING GRAVEL PATH

RETAIN EXISTING AUSTRALIAN NATIVE UNDERSTORY PLANTING
SUPPLEMENT WITH ADDITIONAL NATIVE SPECIES

AUSTRALIAN NATIVE UNDERSTORY PLANTING



NOMINATED EAVES LIGHTING TO GRAYTHWAITE HOUSE

PEDESTRIAN CONNECTION TO SENIOR SCHOOL

DETAILED PLANTING TO ENTRY
6 CAR SPACES

BONDED GRAVEL DRIVE DURING STAGE 1
NEW HEDGE TO SIDE OF DRIVE

LANDSCAPE UPLIGHT ON SELECTED TREES TO HIGHLIGHT

SUPPLEMENT PLANTING TO DRIVE
STRENGTHENING ENTRY TO HOUSE PRECINCT

EXISTING BRUSHBOX AND CAMPHOR LAUREL TREES TO BE RETAINED

SINGLE LANE DRIVE RETAINED
KERB REMOVED AND GRASS REINSTATED ADJACENT TO DRIVE

FLUSH DRIVEWAY LANDSCAPE LIGHTS AT APPROXIMATE 10m CENTRES TO ILLUMINATE DRIVEWAY

SUPPLEMENT PLANTING TO DRIVE
STRENGTHENING ENTRY TO HOUSE PRECINCT
FORMAL LANDSCAPE ASSOCIATED WITH HOUSE AND DRIVE

NEW GATE AND FENCE TO ARCHITECTS DETAILS

LANDSCAPE CHARACTER



HERITAGE ROSES



DETAILED SHRUB AND HEDGE PLANTING



HERITAGE BRICK PAVING



BONDED GRAVEL DRIVE SURFACE



AUSTRALIAN NATIVE CHARACTER



PARKLAND SETTING

CLIENT
Sydney Church of England
Grammar School (Shore)

Blue Street, North
Sydney
NSW 2060
T +61 2 9923 2277
F +61 2 9922 2689



ARCHITECTS
P D Mayoh Pty Ltd Architects
T + 61 2 9958 0488 F +61 2 9958 6424

LANDSCAPE ARCHITECTS
Taylor Brammer
T + 61 2 9387 8855 F +61 2 9387 8155

ARCHITECTS
Tanner Architects
T + 61 2 9281 4399 F +61 2 9281 4337

PROJECT MANAGER
Fitzwalter Group
T + 61 2 8925 6701 F +61 2 8925 6798

Rev	Date	Description	Checked	Auth.
A	24.11.10	PROJECT APPLICATION	DMT	DMT
B	01.12.10	ARBORISTS CO-ORD.		
C	22.06.11	RETENTION OF T60		
D	12.07.11	UPDATED LANDSCAPE PLAN		
E	16.09.11	UPDATED ARCH.		

Proj. Dir.	Proj. Arch	Drawn
DMT	AC	AC
Job No.	Date	Scale
10-027s	01.12.10	1:500 @ A1

Do not scale drawings. Verify all dimensions on site. Notify architect of all discrepancies

5 10 15 20 25 50

Project
GRAYTHWAITE
CONCEPT PLAN
APPLICATION

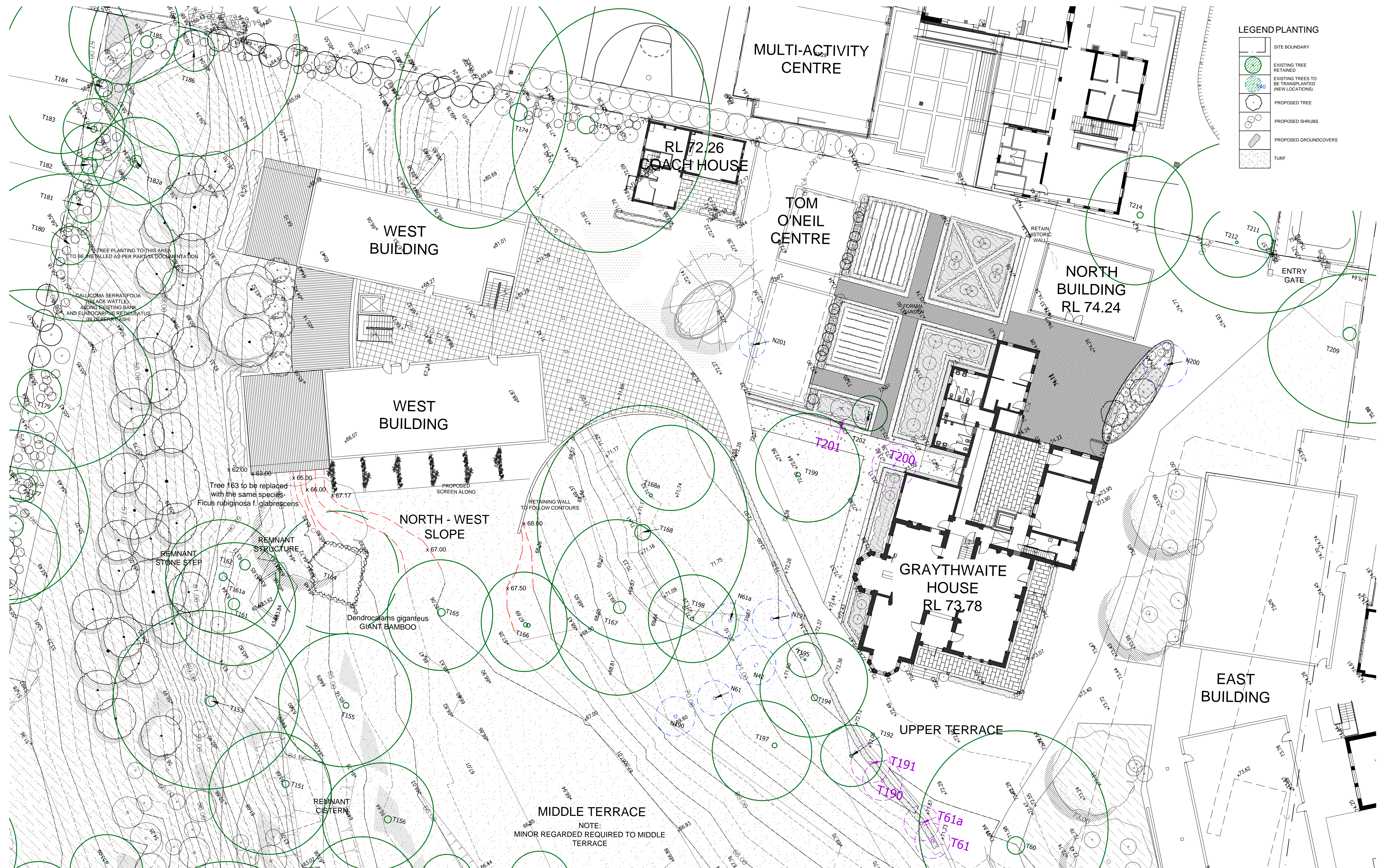
Drawing Title
LANDSCAPE MASTER PLAN
Drawing No.
LT.001

Revision
E

taylor
brammer

abu dhadi
austinmer
sydney
taylor brammer landscape architects pty ltd abn 61 058 724 983

218 Oxford Street, Woollahra, NSW, Australia, 2025
tel: (02) 9387 8855 fax: (02) 9387 8155
e: sydney@taylorbrammer.com.au



CLIENT
Sydney Church of England
Grammar School (Shore)

Blue Street, North
Sydney
NSW 2060
T +61 2 9923 2277
F +61 2 9922 2689



ARCHITECTS
P D Mayoh Pty Ltd Architects
T + 61 2 9958 0488 F +61 2
9958 6424
LANDSCAPE ARCHITECTS
Taylor Brammer
T + 61 2 9387 8855 F +61 2
9387 8155

ARCHITECTS
Tanner Architects
T + 61 2 9281 4399 F +61 2
9281 4337

PROJECT MANAGER
Fitzwalter Group
T + 61 2 8925 6701 F +61 2
8925 6798

Rev	Date	Description	Checked	Auth.
A	17.05.11	PROJECT APPLICATION	DMT	DMT
B	14.06.11	COORDINATION		
C	12.07.11	COORDINATION		
D	16.09.11	UPDATED ARCH.		
E	20.09.11	REMOVAL OF GARDEN BED AND EXTENSION OF PAVING		

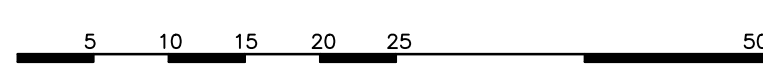
Proj. Dir. DMT
Proj. Arch. AC
Drawn AC
Date 17.05.11
Scale 1:200 @ A1

Do not scale drawings. Verify all dimensions on site. Notify architect of all discrepancies.

Project
GRAYTHWAITE
CONCEPT PLAN
APPLICATION

Drawing Title
LANDSCAPE PLAN- NORTH
Drawing No. LT.002
Revision E

taylor
brammer
abu dhari
austinmer
sydney
taylor brammer landscape architects pty ltd
218 Oxford Street, Woollahra, NSW, Australia, 2025
tel: (02) 9387 8855 fax: (02) 9387 8155
e: sydney@taylorbrammer.com.au

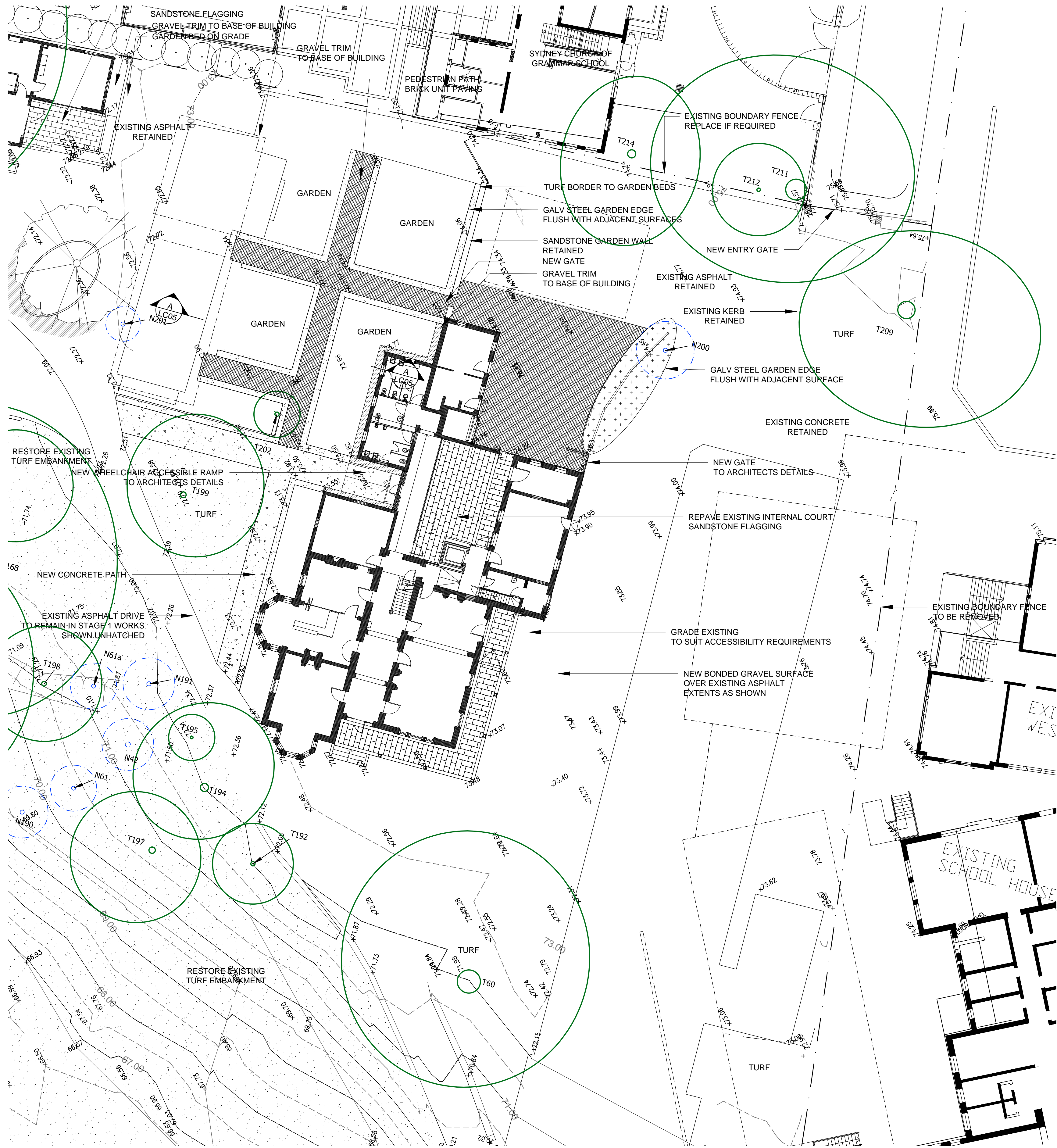


18 Oxford Street, Woollahra, NSW, Australia, 2025
tel: (02) 9387 8855 fax: (02) 9387 8155
e: sydney@taylorbrammer.com.au

EXISTING TREE SCHEDULE- HERITAGE SIGNIFICANCE AND ACTION

TREE NO.	BOTANICAL NAME	COMMON NAME	HEIGHT (m)	HERITAGE SIGNIFICANCE	ACTION	COMMENT
1	<i>Sapium sebiferum</i>	Chinese Tallow Tree	6	Little	Retain	
2	<i>Sapium sebiferum</i>	Chinese Tallow Tree	4.5	Little	Remove	Inconsistent
3	<i>Sapium sebiferum</i>	Chinese Tallow Tree	4.5	Little	Retain	
4	<i>Lophostemon confertus</i>	Brush Box	9	Little	Retain	
5	<i>Sapium sebiferum</i>	Chinese Tallow Tree	5.5	Little	Retain	
6	<i>Ficus benjamina</i>	Weeping fig	7.5	Little	Remove	Inconsistent
7	<i>Eucalyptus nicholii</i>	New England Peppemin	9	Little	Retain	
7a	<i>Eucalyptus botryoides</i>	Bangalay Tree	7	Little	Retain	
8	<i>Cinnamomum camphora</i>	Camphor Tree	12	Moderate	Retain	
9	<i>Lophostemon confertus</i>	Brush Box	8	Moderate	Retain	
10	<i>Robinia pseudoacacia</i>	Black locust	7	Little	Remove	Weed species
11	<i>Robinia pseudoacacia</i>	Black locust	8	Little	Remove	Weed species
12	<i>Robinia pseudoacacia</i>	Black locust	7	Little	Remove	Weed species
13	<i>Robinia pseudoacacia</i>	Black locust	7	Little	Remove	Weed species
14	<i>Robinia pseudoacacia</i>	Black locust	8.5	Little	Remove	Weed species
15	<i>Robinia pseudoacacia</i>	Black locust	8	Little	Remove	Weed species
16	<i>Robinia pseudoacacia</i>	Black locust	7	Little	Remove	Weed species
17	<i>Robinia pseudoacacia</i>	Black locust	9	Little	Remove	Weed species
18	<i>Cinnamomum camphora</i>	Camphor Tree	12	Moderate	Retain	
19	<i>Robinia pseudoacacia</i>	Black locust	9	Little	Remove	Weed species
20	<i>Salix babylonica</i>	Weeping Willow	13	Little	Remove	Weed species
21	<i>Robinia pseudoacacia</i>	Black locust	10	Little	Remove	Weed species
23	<i>Robinia pseudoacacia</i>	Black locust	7	Little	Remove	Weed species
23a	<i>Populus simonii</i>	Chinese Poplar	11	Little	Retain	
24	<i>Lophostemon confertus</i>	Brush Box	13	Moderate	Retain	
25	<i>Lophostemon confertus</i>	Brush Box	12	Moderate	Retain	
26	<i>Lophostemon confertus</i>	Brush Box	10	Moderate	Retain	
27	<i>Robinia pseudoacacia</i>	Black locust	6	Little	Remove	Weed species
28	<i>Robinia pseudoacacia</i>	Black locust	7	Little	Remove	Weed species
29	<i>Robinia pseudoacacia</i>	Black locust	9	Little	Remove	Weed species
30	<i>Cinnamomum camphora</i>	Camphor Tree	11	Moderate	Retain	
31	<i>Robinia pseudoacacia</i>	Black locust	10	Little	Remove	Weed species
32	<i>Robinia pseudoacacia</i>	Black locust	9	Little	Remove	Weed species
33	<i>Robinia pseudoacacia</i>	Black locust	11	Little	Remove	Weed species
34	<i>Cinnamomum camphora</i>	Camphor Tree	13	Moderate	Retain	
35	<i>Populus nigra 'Italica'</i>	Lombardy Poplar	12	Little	Remove	Inconsistent
36	<i>Populus nigra 'Italica'</i>	Lombardy Poplar	14	Little	Remove	Inconsistent
37	<i>Cinnamomum camphora</i>	Camphor Tree	15	Moderate	Retain	
37a	<i>Casuarina glauca</i>	Swamp Oak	14	Little	Retain	
37b	<i>Casuarina glauca</i>	Swamp Oak	9	Little	Retain	
38	<i>Ficus obliqua</i>	Small Leafed Fig	16	High	Retain	
39	<i>Cinnamomum camphora</i>	Camphor Laurel	20	Little	Retain	
40	<i>Lophostemon confertus</i>	Brush Box	14	High	Retain	
41	<i>Stenocarpus sinuatus</i>	Firewheel Tree	14	High	Retain	
42	<i>Washingtonia robusta</i>	Washington Palm	7	Little	Transplant	
43	<i>Cinnamomum camphora</i>	Camphor Laurel	16	Little	Retain	
44	<i>Cryptocarya obovata</i>	Pepperberry Tree	18	Moderate	Retain	
45	<i>Cinnamomum camphora</i>	Camphor Laurel	15	Little	Retain	
46	<i>Lophostemon confertus</i>	Brush Box	14	Little	Retain	
46a	<i>Alectryon tomentosum</i>	Rambutan	8	Little	Retain	
47	<i>Ligustrum lucidum</i>	Large leaved Privet	7	Intrusive	Remove	Weed species
48	<i>Unidentified species</i>	Unidentified species	14	Little	Retain	
49	<i>Araucaria columnaris</i>	Cooks Pine	30	Exceptional	Retain	
50	<i>Cinnamomum camphora</i>	Camphor Laurel	11	Little	Remove	Within Footprint of Works
51	<i>Washingtonia robusta</i>	Washington Palm	10	Little	Retain	
52	<i>Schefflera actinophylla</i>	Umbrella tree	7	Little	Remove	Inconsistent
53	<i>Cupressocyparis x leylandii</i>	Leyland Cypress	10	Little	Remove	Within Footprint of Works
54	<i>Cupressocyparis x leylandii</i>	Leyland Cypress	9	Little	Remove	Within Footprint of Works
55	<i>Cupressocyparis x leylandii</i>	Leyland Cypress	8	Little	Remove	Within Footprint of Works
56	<i>Cupressocyparis x leylandii</i>	Leyland Cypress	10	Little	Remove	Within Footprint of Works
57	<i>Cupressocyparis x leylandii</i>	Leyland Cypress	9	Little	Remove	Within Footprint of Works
58	<i>Cupressocyparis x leylandii</i>	Leyland Cypress	9	Little	Remove	Within Footprint of Works
59	<i>Cinnamomum camphora</i>	Camphor Laurel	6	Little	Remove	Within Footprint of Works
60	<i>Ficus obliqua</i>	Small Leafed Fig	12	High	Retain	
61	<i>Washingtonia robusta</i>	Washington Palm	15	Moderate	Transplant	
61a	<i>Washingtonia robusta</i>	Washington Palm	14	Moderate	Transplant	
62	<i>Pittosporum undulatum</i>	Native daphne	6	Little	Remove	Inconsistent
63	<i>Alectryon tomentosum</i>	Rambutan	6	Little	Remove	Inconsistent
64	<i>Omalaanthus populifolius</i>	Bleeding Heart	6	Little	Remove	Weed species
65	<i>Populus alba</i>	Silver Poplar	5	Little	Remove	Weed species
66	<i>Pittosporum undulatum</i>	Native Daphne	6	Little	Remove	Inconsistent
67	<i>Populus alba</i>	Silver Poplar	10	Little	Remove	Weed species
68	<i>Ficus obliqua</i>	Small Leafed Fig	14	High	Retain	
68a,69,70,70a	<i>Acacia sp. Parramattensis</i>	Sydney Green Wattle	12,13,14,11	Little	Remove	Coloniser
71	<i>Ficus macrophylla</i>	Moreton Bay Fig	15	High	Retain	
71a	<i>Glochidion ferdinandi</i>	Cheese Tree	9	Little	Retain	
72	<i>Pittosporum undulatum</i>	Native daphne	13	Little	Retain	
73	<i>Ficus macrophylla</i>	Moreton Bay Fig	15	High	Retain	
74	<i>Ficus obliqua</i>	Small Leafed Fig	15	High	Retain	
75	<i>Pittosporum undulatum</i>	Native daphne	7	Little	Retain	
75a	<i>Pittosporum undulatum</i>	Native daphne	9	Little	Retain	
76	<i>Pittosporum undulatum</i>	Native daphne	9	Little	Retain	
77	<i>Pittosporum undulatum</i>	Native daphne	7	Little	Retain	
78	<i>Pittosporum undulatum</i>	Native daphne	8	Little	Retain	
79	<i>Glochidion ferdinandi</i>	Cheese Tree	8	Little	Retain	
80	<i>Pittosporum undulatum</i>	Native daphne	11	Little	Retain	
83	<i>Pittosporum undulatum</i>	Native daphne	10	Little	Retain	
84	<i>Melaleuca styphelioides</i>	Prickly Paperbark	7	Little	Retain	
85	<i>Melaleuca styphelioides</i>	Prickly Paperbark	7	Little	Retain	
85a	<i>Melaleuca styphelioides</i>	Prickly Paperbark	7	Little	Retain	
86	<i>Melaleuca styphelioides</i>	Prickly Paperbark	7	Little	Retain	
87	<i>Melaleuca styphelioides</i>	Prickly Paperbark	7	Little	Retain	
88	<i>Celtis sinensis</i>	Chinese Nettle Tree	7	Little	Remove	Weed species
89	<i>Ficus macrophylla</i>	Moreton Bay Fig	18	High	Retain	
90	<i>Ficus macrophylla</i>	Moreton Bay Fig	18	High	Retain	
90a	<i>Ficus macrophylla</i>	Moreton Bay Fig	18	High	Retain	
91	<i>Erythina x Sykesii</i>	Indian Coral Tree	12	Little	Remove	Weed species
92	<i>Erythina x Sykesii</i>	Indian Coral Tree	12	Little	Remove	Weed species
92a	<i>Erythina x Sykesii</i>	Indian Coral Tree	10	Little	Remove	Weed species
93	<i>Erythina x Sykesii</i>	Indian Coral Tree	12	Little	Remove	Weed species
93a	<i>Erythina x Sykesii</i>	Indian Coral Tree	12	Little	Remove	Weed species
94	<i>Erythina x Sykesii</i>	Indian Coral Tree	11	Little	Remove	Weed species
95	<i>Erythina x Sykesii</i>	Indian Coral Tree	14	Little	Remove	Weed species
96	<i>Erythina x Sykesii</i>	Indian Coral Tree	11	Little	Remove	Weed species
97	<i>Erythina x Sykesii</i>	Indian Coral Tree	9	Little	Remove	Weed species
98	<i>Erythina x Sykesii</i>	Indian Coral Tree	8	Little	Remove	Weed species
99	<i>Ficus macrophylla</i>	Moreton Bay Fig	17	High	Retain	
100	<i>Ficus macrophylla</i>	Moreton Bay Fig	15	High	Retain	
101	<i>Populus alba</i>	Silver Poplar	12	Little	Remove	Weed species

TREE NO.	BOTANICAL NAME	COMMON NAME	HEIGHT (m)	HERITAGE SIGNIFICANCE	ACTION	COMMENT
102	<i>Populus alba</i>	Silver Poplar	12	Little	Remove	Weed species
103	<i>Populus alba</i>	Silver Poplar	15	Little	Remove	Weed species
104	<i>Grevillea robusta</i>	Silky Oak	17	Little	Retain	
105	<i>Araucaria columnaris</i>	Hoop Pine	8	Little	Retain	
106	<i>Ficus sp.</i>	Small Leafed Fig	10	Little	Retain	
106a	<i>Brachychiton discolor</i>	Queensland Lacebark	12	Little	Retain	
107	<i>Ficus macrophylla</i>	Moreton Bay Fig	14	High	Retain	
108	<i>Ficus macrophylla</i>	Moreton Bay Fig	16	High	Retain	
109	<i>Ficus macrophylla</i>	Moreton Bay Fig	12	Little	Retain	
110	<i>Jacaranda mimosifolia</i>	Jacaranda	9	Little	Retain	
111	<i>Populus alba</i>	Silver Poplar	10	Little	Remove	Weed species
112	<i>Ficus macrophylla</i>	Moreton Bay Fig	17	High	Retain	
114	<i>Ficus rubiginosa f. glabrescens</i>	Port Jackson Fig	10	Little	Retain	
115	<i>Ficus macrophylla</i>	Moreton Bay Fig	13	High	Retain	
116	<i>Ficus macrophylla</i>	Moreton Bay Fig	15	High	Retain	
117	<i>Ficus macrophylla</i>	Moreton Bay Fig	15	High	Retain	
118	<i>Eucalyptus saligna</i>	Sydney Blue Gum	20	Little	Retain	
119	<i>Pittosporum undulatum</i>	Native daphne	11	Little	Retain	
120	<i>Pittosporum undulatum</i>	Native daphne	12	Little	Retain	
121	<i>Ficus rubiginosa f. glabrescens</i>	Port Jackson Fig	15	High	Retain	
122	<i>Olea africana car. Africana</i>	African Olive	8	Little	Remove	Weed species
123	<i>Pittosporum undulatum</i>	Native daphne	7	Little	Retain	
124	<i>Olea africana car. Africana</i>	African Olive	9	Little	Remove	Weed species
125	<i>Ficus sp.</i>	Small Leafed Fig	9	Little	Retain	
126	<i>Pittosporum undulatum</i>	Native daphne	13	Little	Retain	
127	<i>Pittosporum undulatum</i>	Native daphne	14	Little	Retain	
128	<i>Olea africana car. Africana</i>	African Olive	12	Little	Remove	Weed species
130	<i>Olea africana car. Africana</i>	African Olive	9	Little	Remove	Weed species
131	<i>Pittosporum undulatum</i>	Native daphne	11	Little	Retain	
132	<i>Pittosporum undulatum</i>	Native daphne	11	Little	Retain	
133	<i>Olea africana car. Africana</i>	African Olive	9	Little	Remove	Weed species
134	<i>Glochidion ferdinandi</i>	Cheese Tree	12	Little	Retain	
135	<i>Pittosporum undulatum</i>	Native daphne	10	Little	Retain	
136	<i>Ficus sp.</i>	Small Leafed Fig	13	Little	Retain	
137	<i>Erythina x Sykesii</i>	Indian Coral Tree	15	Little	Remove	Weed species
137a	<i>Pittosporum undulatum</i>	Native daphne	9	Little	Retain	
137b	<i>Erythina x Sykesii</i>	Indian Coral Tree	15	Little	Remove	Weed species
137c	<i>Erythina x Sykesii</i>	Indian Coral Tree	15	Little	Remove	Weed species
138	<i>Erythina x Sykesii</i>	Indian Coral Tree	15	Little	Remove	Weed species
139	<i>Pittosporum undulatum</i>	Native daphne	10	Little	Remove	Remove to accommodate new landscape works
140	<i>Pittosporum undulatum</i>	Native Daphne	7	Little	Remove	
141	<i>Ficus rubiginosa f. glabrescens</i>	Port Jackson Fig	14	High	Retain	
141a	<i>Pittosporum undulatum</i>	Native daphne	7	Little	Retain	
142	<i>Pittosporum undulatum</i>	Native daphne	12	Little	Retain	
142a	<i>Pittosporum undulatum</i>	Native daphne	7	Little	Retain	
143	<i>Olea africana car. Africana</i>	African Olive	10	Little	Remove	Weed species
144	<i>Ficus sp.</i>	Small Leafed Fig	12	Little	Retain	
145	<i>Pittosporum undulatum</i>	Native daphne	8	Little	Retain	
146	<i>Pittosporum undulatum</i>	Native daphne	8	Little	Retain	
147	<i>Pittosporum undulatum</i>	Native daphne	8	Little	Retain	
148	<i>Ficus rubiginosa f. Rubiginosa</i>	Port Jackson Fig	10	Little	Retain	
149	<i>Olea africana car. Africana</i>	African Olive	12	Little	Remove	Weed species
150	<i>Olea africana car. Africana</i>	African Olive	12	Little	Remove	Weed species
151	<i>Ficus rubiginosa f. glabrescens</i>	Port Jackson Fig	13	High	Retain	
152	<i>Ligustrum lucidum</i>	Large leaved Privet	7	Intrusive	Remove	Weed species
153	<i>Ficus macrophylla</i>	Moreton Bay Fig	15	High	Retain	
153a	<i>Olea africana car. Africana</i>	African Olive	8	Little	Remove	Weed species
154	<i>Populus alba</i>	Silver Poplar	8	Little	Remove	Weed species
155	<i>Lophostemon confertus</i>	Brush Box	13	Moderate	Retain	
156	<i>Ficus sp.</i>	Small Leafed Fig	11	Little	Retain	
157	<i>Eucalyptus pilularis</i>	Blackbutt	9	Little	Retain	
158	<i>Cinnamomum camphora</i>	Camphor Laurel	10	Little	Remove	Weed species
159	<i>Eucalyptus pilularis</i>	Blackbutt	8	Little	Retain	
160	<i>Ficus rubiginosa f. glabrescens</i>	Port Jackson Fig	10	High	Retain	
161	<i>Ficus rubiginosa f. glabrescens</i>	Port Jackson Fig	16	High	Retain	
161a	<i>Ficus macrophylla</i>	Moreton Bay Fig	13	High	Retain	
162	<i>Ficus sp.</i>	Small Leafed Fig	16	High	Retain	
163	<i>Ficus rubiginosa f. glabrescens</i>	Port Jackson fg	15	High	Remove	Unstable
164	<i>Dendrocalamus giganteus</i>	Giant Bamboo	15	Moderate	Retain	
165	<i>Lophostemon confertus</i>	Brush Box	11	Moderate	Retain	
166	<i>Lophostemon confertus</i>	Brush Box	12	Moderate	Retain	
167	<i>Ficus rubiginosa f. glabrescens</i>	Port Jackson Fig	15	High	Retain	
168	<i>Ficus rubiginosa f. glabrescens</i>	Port Jackson Fig	18	High	Retain	
168a	<i>Ficus rubiginosa f. glabrescens</i>	Port Jackson Fig	8	Little	Retain	
169	<i>Unidentified species</i>	<i>Unidentified species</i>	3	Little	Remove	Minor Vegetation
170	<i>Eriobotrya japonica</i>	Japanese Loquat	5	Little	Remove	Garden Escape
171	<i>Ceratonia siliqua</i>	Carob Bean	7	Little	Remove	Inconsistent
172	<i>Celtis sinensis</i>	Chinese Nettle Tree	9	Little	Remove	Weed species
173	<i>Erythina x Sykesii</i>	Indian Coral Tree	10	Little	Remove	Weed species
174	<i>Ficus macrophylla</i>	Moreton Bay Fig	18	High	Retain	
175	<i>Ficus macrophylla</i>	Moreton Bay Fig	18	High	Retain	
176	<i>Ligustrum lucidum</i>	Large leaved Privet	9	Intrusive	Remove	Weed species
176a	<i>Ficus macrophylla</i>	Moreton Bay Fig	13	High	Retain	
177	<i>Ficus macrophylla</i>	Moreton Bay Fig	16	High	Retain	
178	<i>Populus alba</i>	Silver Poplar	7	Little	Remove	Weed species
179	<i>Ficus macrophylla</i>	Moreton Bay Fig	15	High	Retain	
180	<i>Ficus macrophylla</i>	Moreton Bay Fig	17	High	Retain	
181	<i>Ficus macrophylla</i>	Moreton Bay Fig	16	High	Retain	
182	<i>Ficus macrophylla</i>	Moreton Bay Fig	12	High	Retain	
182a	<i>Eucalyptus sp.</i>	Gum	18	Little	Retain	
183	<i>Ficus macrophylla</i>	Moreton Bay Fig	5	High	Retain	
184	<i>Ficus macrophylla</i>	Moreton Bay Fig	12	High	Retain	
185	<i>Ficus macrophylla</i>	Moreton Bay Fig	13	High	Retain	
186	<i>Ficus macrophylla</i>	Moreton Bay Fig	18	High	Retain	
187	<i>Acer negundo</i>	Box Elder	10	Little	Remove	Inconsistent
188	<i>Morus nigra</i>	Mulberry	7	Little	Remove	Garden Escape
189	<i>Ligustrum lucidum</i>	Large leaved Privet	9	Intrusive	Remove	Weed species
190	<i>Washingtonia robusta</i>	Mexican Fan Palm	15	Moderate	Transplant	
191	<i>Washingtonia robusta</i>	Washington Palm	16	Moderate	Transplant	
192	<i>Lophostemon confertus</i>	Brush Box	8	Moderate	Retain	
193	<i>Lagunaria patersonia</i>	Norfolk Island Hibiscus	10	Little	Remove	Inconsistent
194	<i>Lophostemon confertus</i>	Brush Box	10	Moderate	Retain	
195	<i>Trachycarpus fortune</i>	Chinese Windmill Palm	4	Little	Retain	
196	<i>Araucaria columnaris</i>	Cooks Pine	12	Little	Remove	Inconsistent
197	<i>Lophostemon confertus</i>	Brush Box	9	Little	Retain	
198	<i>Lophostemon confertus</i>	Brush Box	9	Moderate	Retain	
199	<i>Jacaranda mimosifolia</i>	Jacaranda	10	Little	Retain	
200	<i>Plumeria acutifolia</i>	Frangipani	4	Little	Transplant	
201	<i>Washingtonia robusta</i>	Washington Palm	2	Little	Transplant	
202	<i>Washingtonia robusta</i>	Washington Palm	16	Little	Retain	



18 Oxford Street, Woollahra, NSW, Australia, 2025
tel: (02) 9387 8855 fax: (02) 9387 8155
e: sydney@taylorbrammer.com.au

18 Oxford Street, Woollahra, NSW, Australia, 2025
tel: (02) 9387 8855 fax: (02) 9387 8155
: sydney@taylorbrammer.com.au

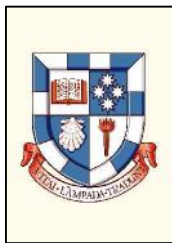


LEGEND PLANTING

	SITE BOUNDARY
	EXISTING TREE RETAINED
	EXISTING TREES TO BE TRANSPLANTED (NEW LOCATIONS)
	PROPOSED TREE

CLIENT
Sydney Church of England
Grammar School (Shore)

Blue Street, North
Sydney
NSW 2060
T +61 2 9923 2277
F +61 2 9922 2689



ARCHITECTS
P D Mayoh Pty Ltd Architects
T + 61 2 9958 0488 F +61 2 9958 6424
LANDSCAPE ARCHITECTS
Taylor Brammer
T + 61 2 9387 8855 F +61 2 9387 8155

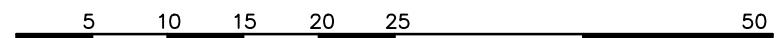
ARCHITECTS
Tanner Architects
T + 61 2 9281 4399 F +61 2 9281 4337

PROJECT MANAGER
Fitzwalter Group
T + 61 2 8925 6701 F +61 2 8925 6798

Rev	Date	Description	Checked	Auth.
A	24.11.10	PROJECT APPLICATION	DMT	DMT
B	01.12.10	ARBORISTS CO-ORD.		
C	16.09.11	UPDATED ARCH.		

Proj. Dir.	Proj. Arch.	Drawn
DMT	AC	AC
Job No.	Date	Scale
10-027s	01.12.10	1: 500 @ A1

Do not scale drawings. Verify all dimensions on site. Notify architect of all discrepancies



Project
GRAYTHWAITE
STAGE 1 PROJECT
APPLICATION

Drawing Title
LANDSCAPE LIGHTING PLAN

Drawing No.
LT. 008

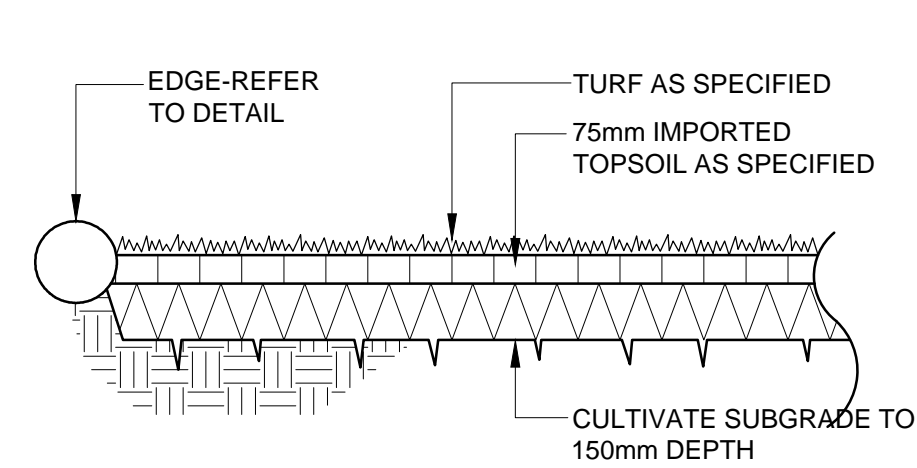
Revision
C

taylor
brammer

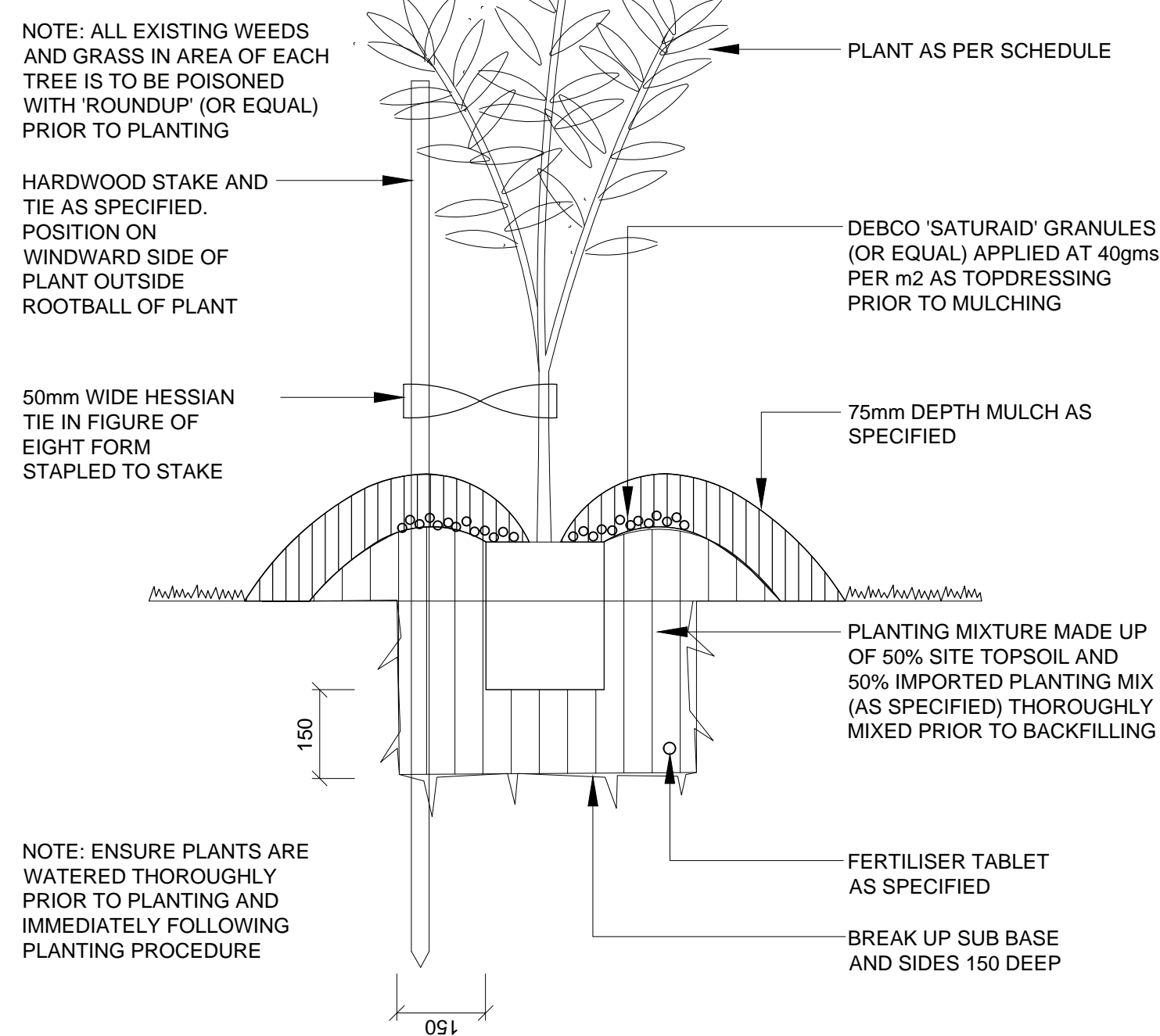
abu dhabi
austinmer
sydney

taylor brammer landscape architects pty ltd abn 61 098 724 988

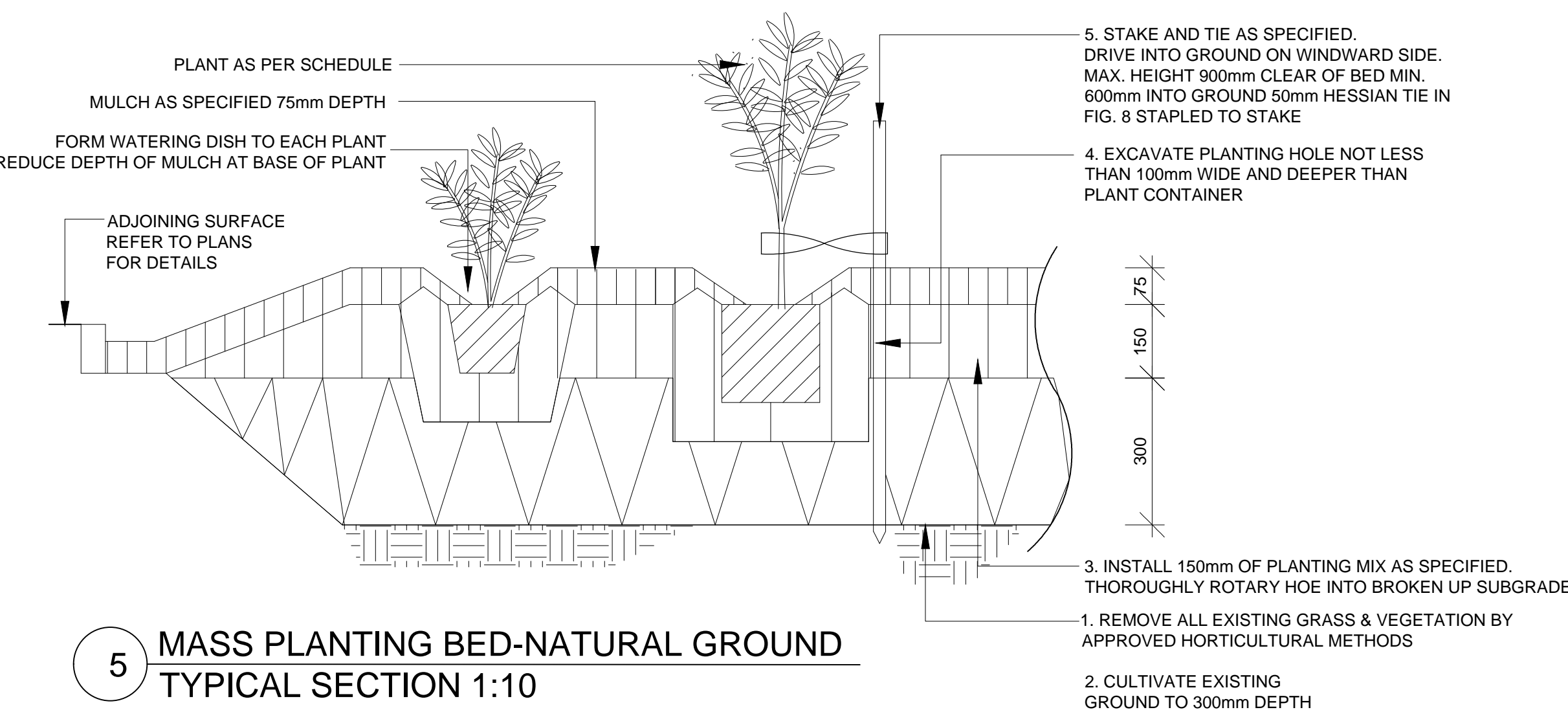
218 Oxford Street, Woollahra, NSW, Australia, 2025
tel: (02) 9387 8855 fax: (02) 9387 8155
e: sydney@taylorbrammer.com.au



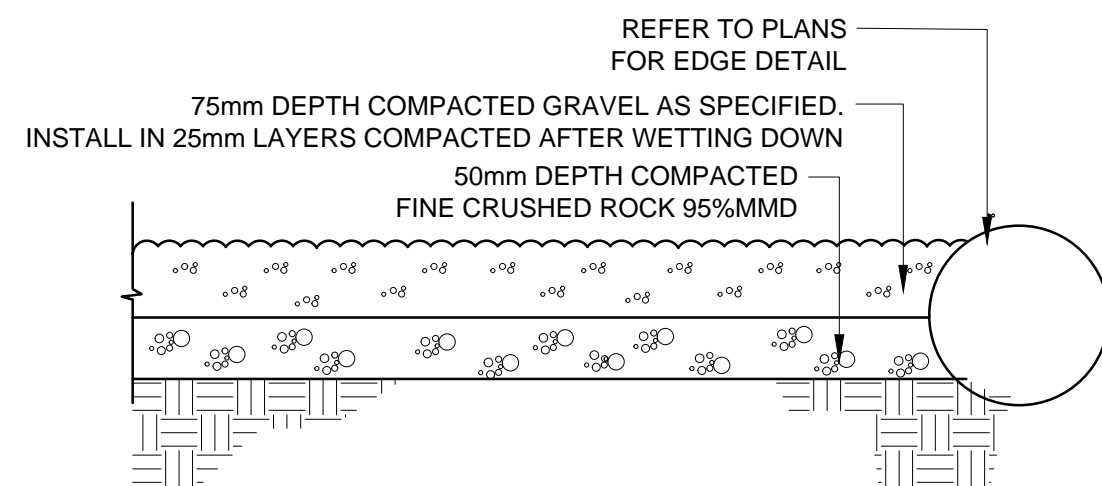
1 TURF SECTION 1:20



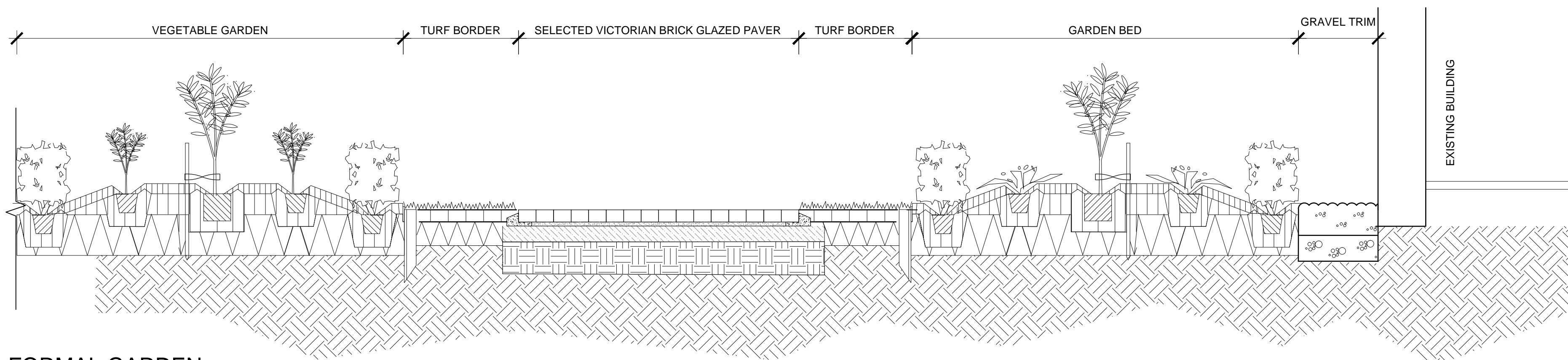
2 TREE PLANTING IN GRASS TYPICAL SECTION 1:10



5 MASS PLANTING BED-NATURAL GROUND TYPICAL SECTION 1:10



6 DECOMPOSED GRAVEL TRIM TO EDGE OF BUILDING TYPICAL SECTION 1:20



A-A FORMAL GARDEN TYPICAL SECTION 1:20

CLIENT
Sydney Church of England
Grammar School (Shore)

Blue Street, North
Sydney
NSW 2060
T +61 2 9923 2277
F +61 2 9922 2689



ARCHITECTS
P D Mayoh Pty Ltd Architects
T + 61 2 9958 0488 F +61 2 9958 6424
LANDSCAPE ARCHITECTS
Taylor Brammer
T + 61 2 9387 8855 F +61 2 9387 8155

ARCHITECTS
Tanner Architects
T + 61 2 9281 4399 F +61 2 9281 4337

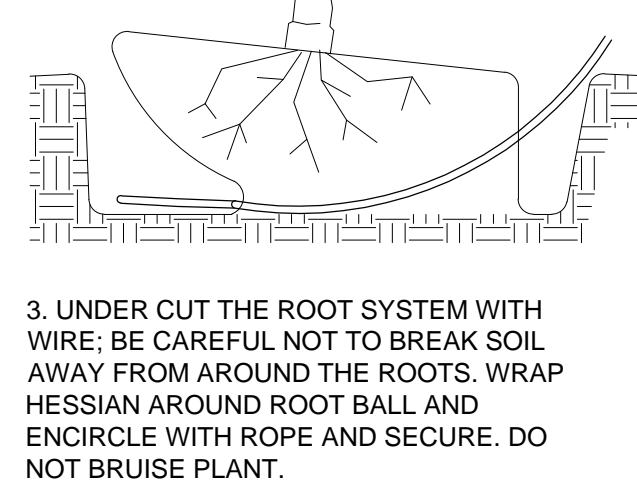
PROJECT MANAGER
Fitzwalter Group
T + 61 2 8925 6701 F +61 2 8925 6798

Rev	Date	Description	Checked	Auth.
A	24.11.10	PROJECT APPLICATION	DMT	DMT

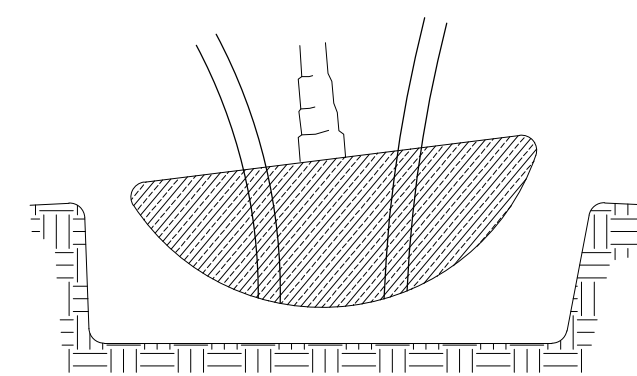
Proj. Dir.	Proj. Arch.	Drawn
DMT	AC	AC
Job No.	Date	Scale
10-027s		1:500 © A1

Do not scale drawings. Verify all dimensions on site. Notify architect of all discrepancies.

5 10 15 20 25 50



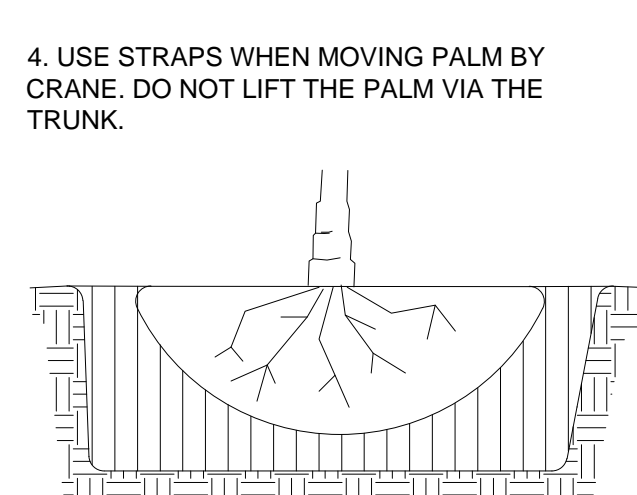
1. WATER PLANT WELL AT LEAST TWO DAYS BEFORE IT IS TO BE MOVED.



2. DIG TRENCH AROUND THE PLANT ROOT SYSTEM AT THE EDGE OF FOLIAGE (DRIP LINE). DIG THE TRENCH TO A DEPTH OF 200mm BELOW THE PLANT ROOT SYSTEM. REMOVE ALL MATURE FRONDS, LEAVING ALL NEW FRONDS. SPRAY ANTI TRANSPIRANT TO ALL FRONDS AT A RATE RECOMMENDED BY MANUFACTURER

NOTE: ALL TRANSPLANTING PROCEDURES ARE TO BE COMPLETED UNDER SUPERVISION OF A CONSULTING ARBORIST

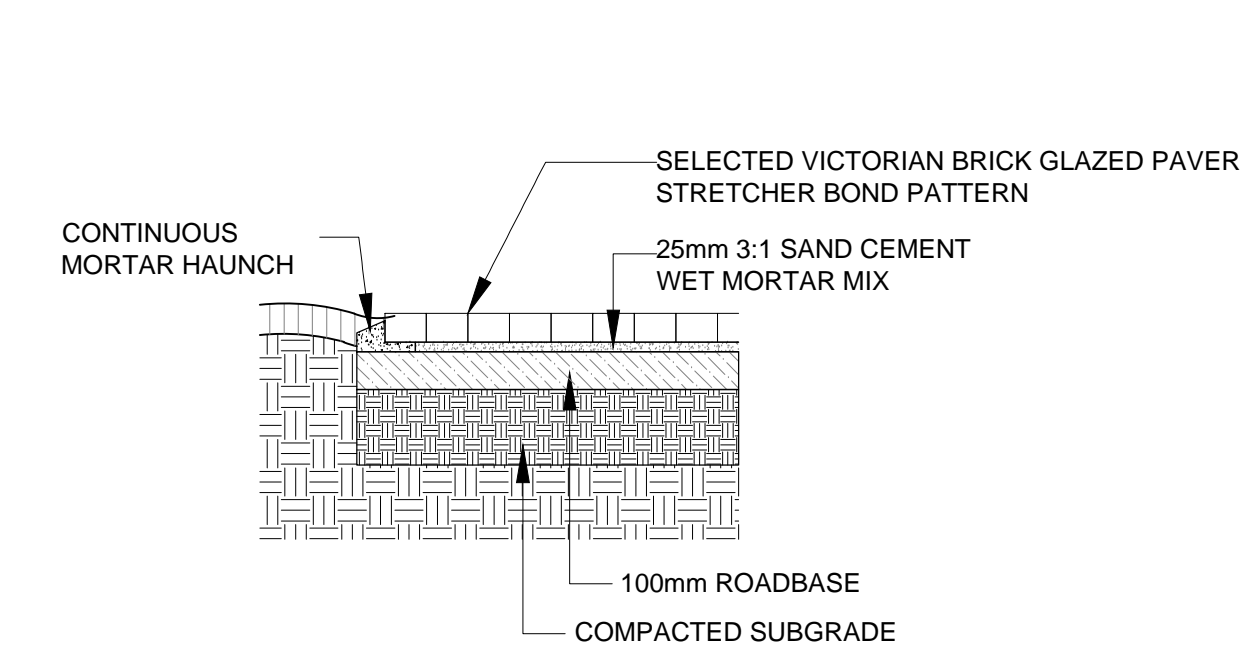
3 PALM TRANSPLANTING 1:10



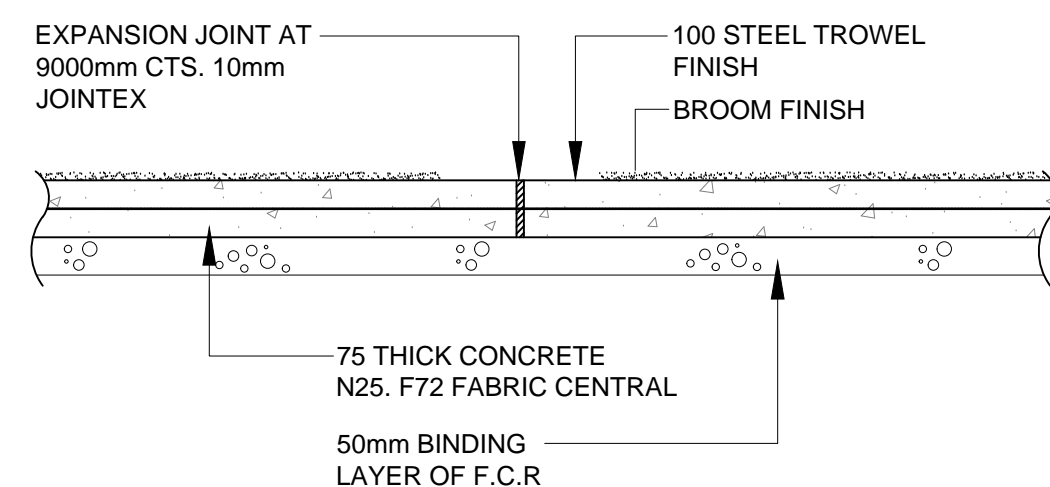
3. UNDER CUT THE ROOT SYSTEM WITH WIRE, BE CAREFUL NOT TO BREAK SOIL AWAY FROM AROUND THE ROOTS. WRAP HESSIAN AROUND ROOT BALL AND ENCIRCLE WITH ROPE AND SECURE. DO NOT BRUISE PLANT.

4. USE STRAPS WHEN MOVING PALM BY CRANE. DO NOT LIFT THE PALM VIA THE TRUNK.

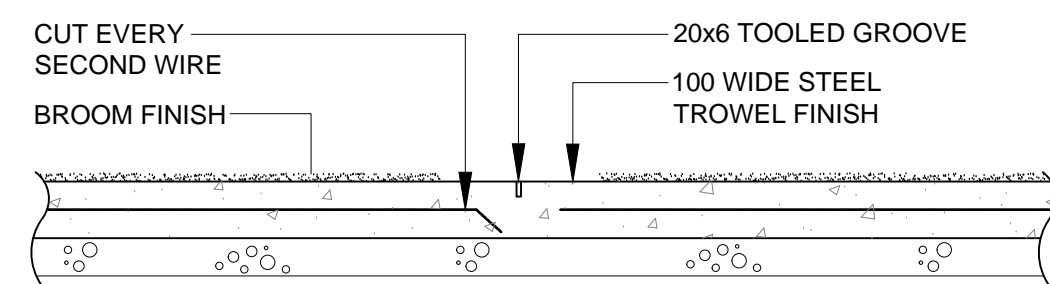
5. MOVE PLANT AND PLACE IN PREPARED PLANTING HOLE. PLACE TOP OF ROOT BALL JUST BELOW EXISTING GROUND LEVEL IN ORDER TO CREATE SLIGHT DISH AROUND PLANT FOR FUTURE WATERING. ONCE PLANT IS POSITIONED, REMOVE ROPE AND HESSIAN. BACKFILL HOLE WITH PLANTING MIX AS SPECIFIED. THOROUGHLY WATER TOPSOIL MIXTURE AFTER EVERY 150mm LAYER IS PLACED. ONCE TOPSOIL MIXTURE IS IN PLACE, WATER ROOT ZONE WITH ROOT PROMOTING HORMONE. WATER WELL UNTIL ESTABLISHED.



4 BRICK PAVING SECTION 1:20

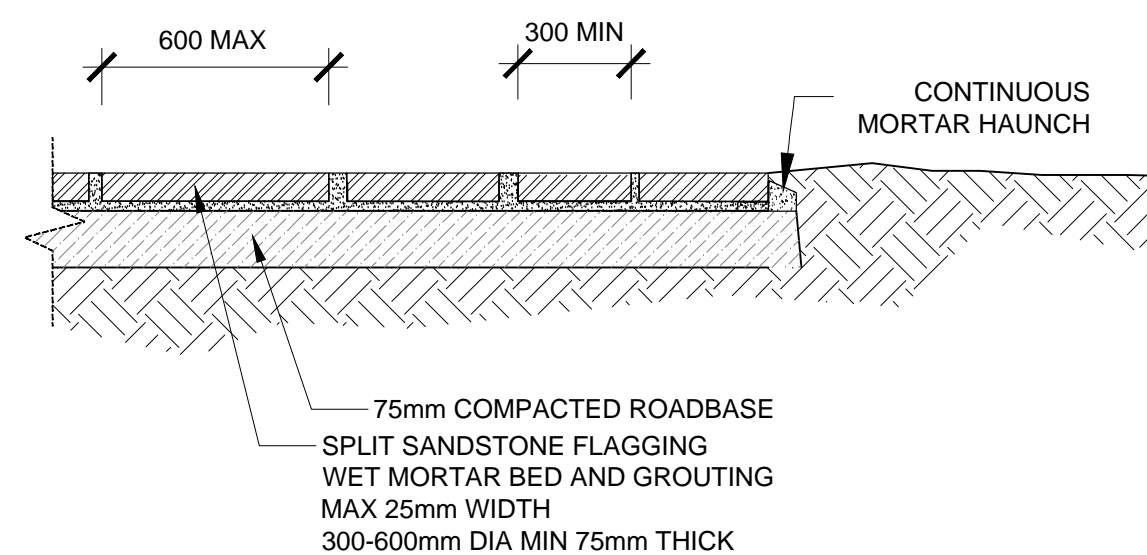


SECTION 1:10-EXPANSION JOINT

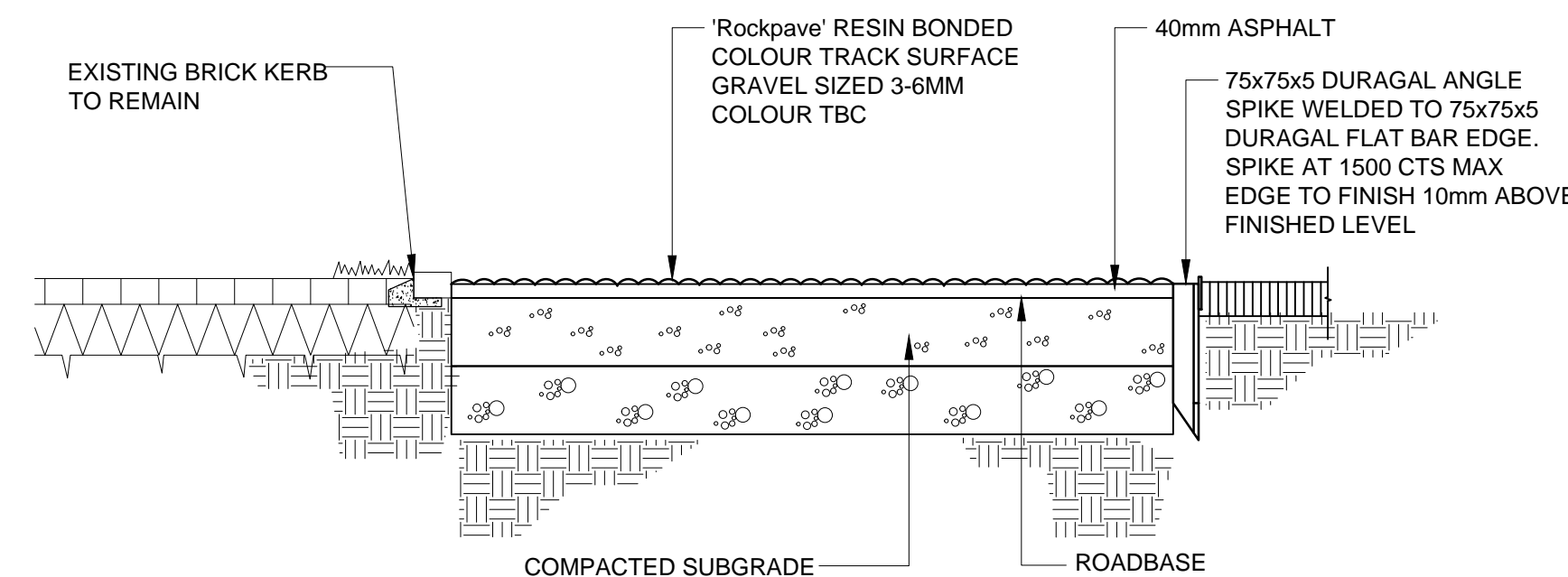


SECTION 1:10-CONSTRUCTION JOINT

8 PAVING-CONCRETE TYPICAL SECTION 1:10



7 SANDSTONE FLAGGING TYPICAL SECTION 1:20



9 BONDED GRAVEL DRIVE SURFACE SECTION 1:20

Project
GRAYTHWAITE
STAGE 1 PROJECT
APPLICATION

Drawing Title
LANDSCAPE DETAILS

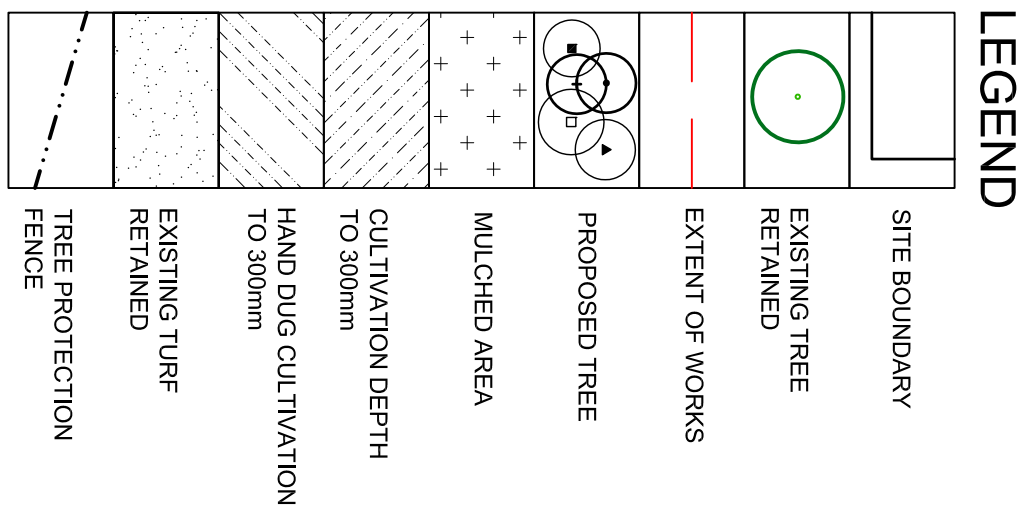
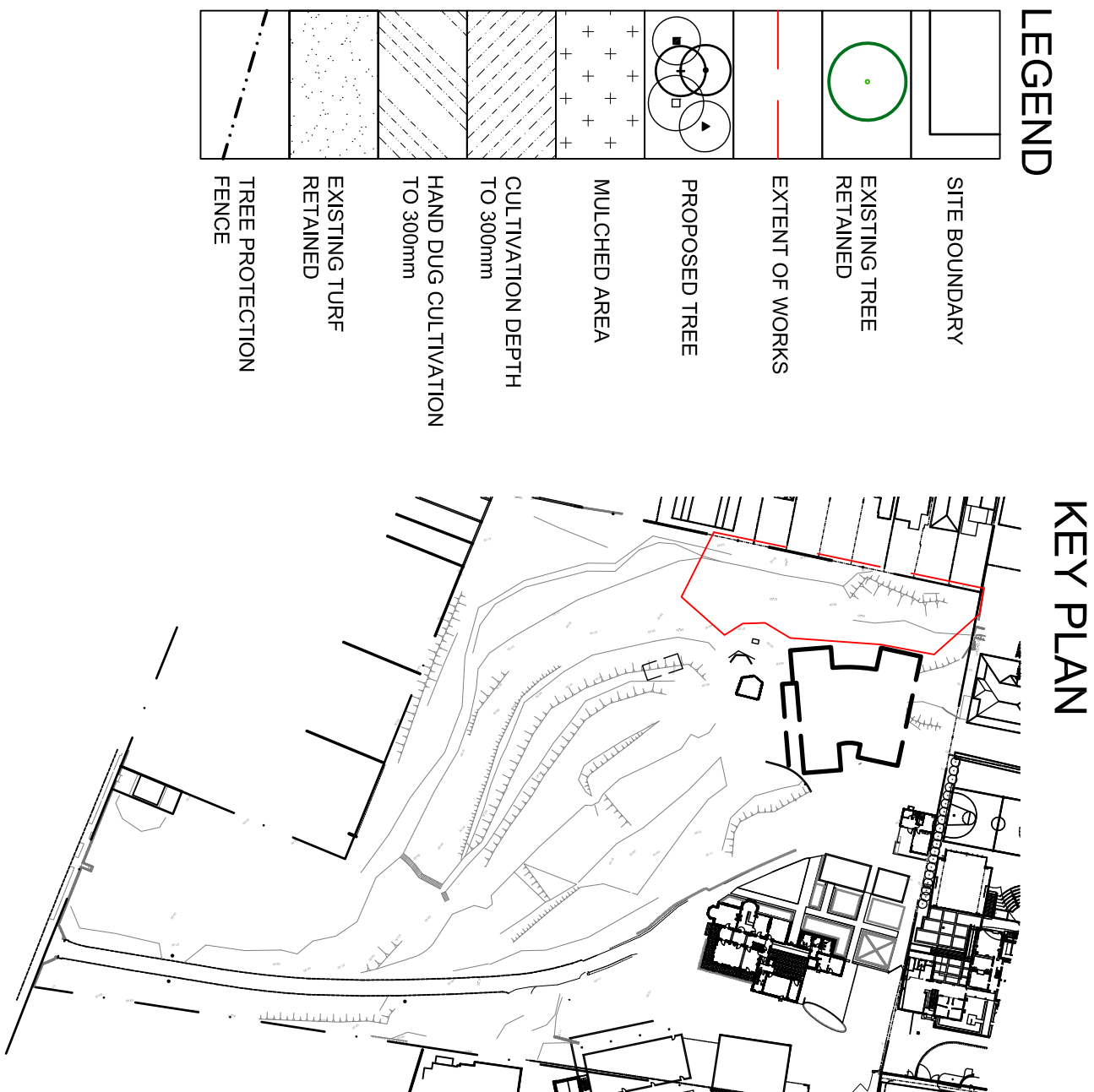
Drawing No.
LT.009

Revision
A

taylor
brammer

abu dhabi
austinmer
sydney
taylor brammer landscape architects pty ltd abn 61 038 724 685

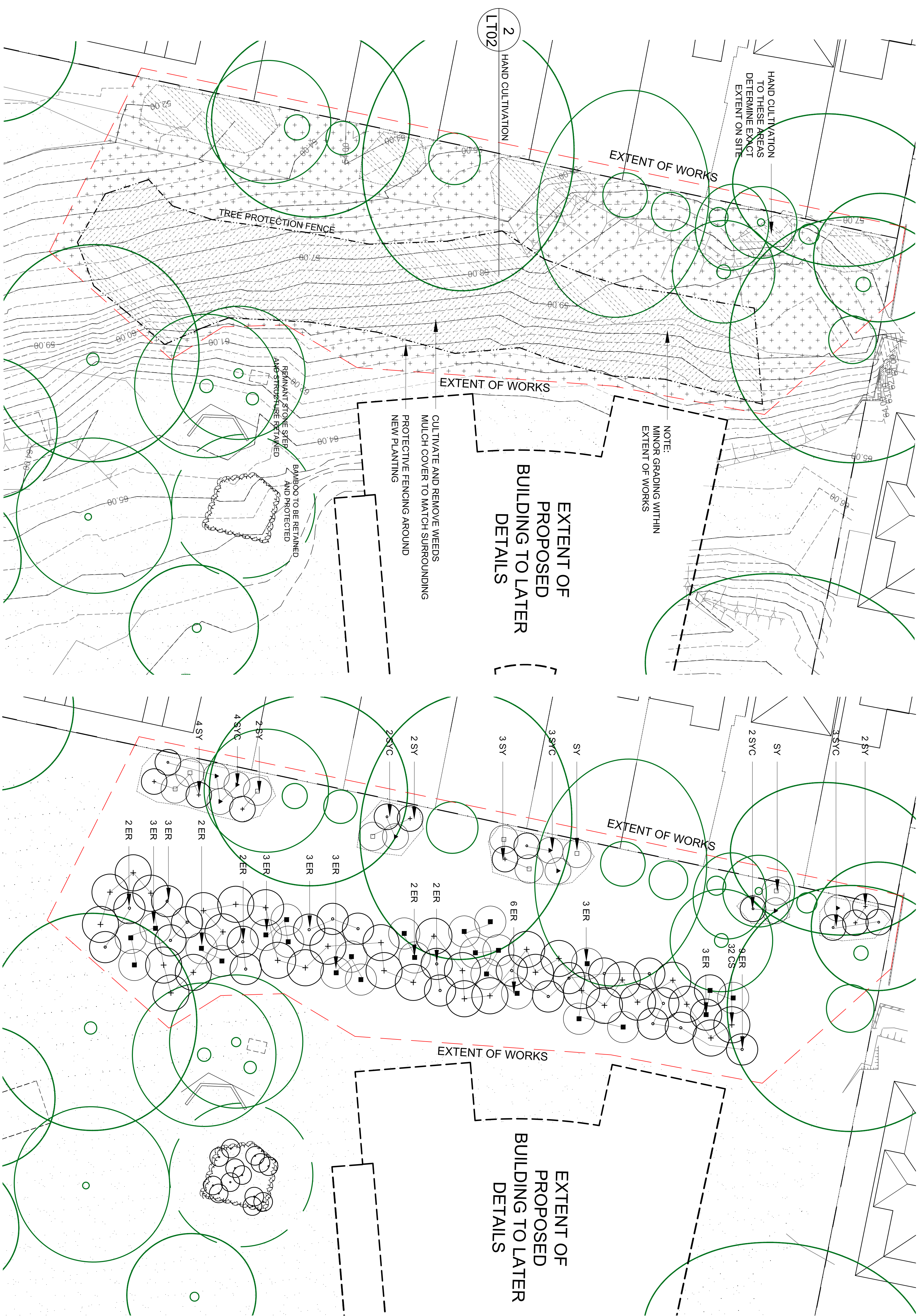
218 Oxford Street, Woollahra, NSW, Australia, 2025
tel: (02) 9387 8855 fax: (02) 9387 8155
e: sydney@taylorbrammer.com.au



PLANT SCHEDULE

ID	BOTANICAL NAME	COMMON NAME	MATURE HEIGHT (m)	POT SIZE	QTY
TREES					
CS	Callitriche serratifolia	Black Wattle	6-10	25L	32
ER	Elaeagnus reticulatus	Blueberry Ash	6-10	25L	21
ER	Elaeagnus reticulatus	Blueberry Ash	6-10	100L	28
SYC	Syzygium Cascade	Pink Flowering Lilly Pilly	3-5	75L	8
SYC	Syzygium Cascade	Pink Flowering Lilly Pilly	3-5	75L	8
SY	Syzygium HedgeMASTER	Lilly Pilly	1	25L	6
SY	Syzygium HedgeMASTER	Lilly Pilly	1	75L	7

NOTE: * Plant quantities on planting plan take precedence over quantities identified in this schedule.



GROUND PREPARATION AND FINISHES
SCALE 1:200

PLANTING PLAN
SCALE 1:200

CLIENT Sydney Church of England Grammar School (Shore)	ARCHITECTS P D Moyah Pty Ltd Architects T + 61 2 9958 0488 F +61 2 9958 6424	ARCHITECTS Tanner Architects T + 61 2 9281 4399 F +61 2 9281 4333	PROJECT MANAGER Fitzwalter Group T + 61 2 8925 6701 F +61 2 8925 6798
	LANDSCAPE ARCHITECTS Taylor Branner T + 61 2 9387 8855 F +61 2 9387 8155		
	Blue Street, North Sydney NSW 2060 T + 61 2 9923 2277 F +61 2 9922 2689		



Rev	Date	Description	Checked Auth.
A	04.10.11	PART 3A APPLICATION	DMT
B	17.10.11	DWG. NUMBER REVISED	DMT

Proj.	Proj.	Drawn
Dir	Arch	AC
DMT	AC	AC
No.	Date	Scale
10-027s	17.05.11	1:200 @ A1

Do not scale drawings. Verify all dimensions on site. Notify architect of all discrepancies



Project Title	GRAYTHWAITE
Drawing No.	LT. 010
Revision	B

taylor
branner

218 Oxford Street, Woodliff NSW, Australia, 2105
tel: (02) 9387 8855 fax: (02) 9387 8155
e: sydney@taylorbranner.com.au

taylor branner landscape architects Pty Ltd acn 61 028 724 993

LANDSCAPE SPECIFICATION NOTES

PROTECTION OF EXISTING TREES TO EXTENT OF WORKS

Protection of existing tree as indicated on the drawing shall be adequately protected for the duration of the building contract. Storage of materials, mixing of materials, vehicle parking, disposal of liquids, stockpiling of materials shall not be carried out within its drip-line.

Retain and protect existing Bamboo (*Dendrocalamus giganteus*- T164 of Heritage Significance Schedule) on site outside the extent of works as indicated on DWG LT001.

Erect a star picket fence with four strand gal wire, tensioned at changes in direction, around the extremities of the tree or adjacent to the building works. Where roots or branches are damaged by building process they shall be cut off cleanly inside the exposed or damaged area. Monitor tree health for the duration of the contract ensuring the root zone does not dry out.

PROTECTION OF NEW TREE PLANTING

Protection of new trees as indicated on the drawing shall be adequately protected for the duration of the contract.

Erect a star picket fence as detailed with four strand gal wire, tensioned at changes in direction, around the new tree planting as indicated on DWG LT001.

SITE PREPARATION

Remove from site all weeds such as oxalis, onion weed, privet, and the like.

HAND CULTIVATION PLANTING AREA UNDER CANOPY

Planting areas on grade that are within the tree canopy and root zone of existing tree on site as indicated on DWG LT001 - cultivate the soil by hand. Cultivate the subsoil to a depth of 300mm for individual plants. Supply and install as detailed on DWG LT002- 2, "Native Low 'P' mix" which is to be the same or similar as that supplied Australian Native Landscapes Tel: 9450 1444 to the prepared hole. Supply and place to a depth of 75mm Forest Fines mulch as supplied Australian Native Landscapes Ph 9450 1444, to hand cultivated area and to the extent of works as indicated on DWG LT001. To be finished flush with adjacent surfaces.

CULTIVATED PLANTING BED AREA

Planting areas on grade that are not with the tree canopy and root zone of existing tree on site - thoroughly cultivate the subsoil to a depth of 300mm as indicated on DWG LT001. Supply and install to a depth of 100mm, "Native Low 'P' mix" which is to be the same or similar as that supplied Australian Native Landscapes Tel: 9450 1444. Supply and place to a depth of 75mm Forest Fines mulch as supplied Australian Native Landscapes Ph 9450 1444, to cultivated area and to the extent of works as indicated on DWG LT001. To be finished flush with adjacent surfaces.

PLANT MATERIALS

All plants shall be true to type, of healthy growth and not displaying restricted growth patterns. Should there be a requirement for substitutions they shall not be changed without prior approval of the Landscape Architect. Allow for slow release native fertiliser to all plants applied at the manufacturers recommended rate to be same or similar to Osmocote.

STAKES AND TIES

For 75k and 100k plants 1.2-1.5m high place 2 Hardwood stakes 38x38x1800mm long per plant. Stakes are to be straight and free from knots or twists and pointed at one end. Drive stakes into the ground for at least a third of their length, avoiding damage to the root system. Provide two hessian ties 75mm wide top each staked plant. Ties to be fixed securely to the stakes, one tie at half the height of the main stem, others as necessary to stabilise the plant. Install tie around stake and stem in a figure of eight pattern.

IRRIGATION

GENERAL

Provide automatically controlled fixed drip-irrigation system to tree planting area as indicated on DWG LT001. Coverage to be varied as required on a seasonal basis and programmed into irrigation controller. System to comply with relevant authorities codes. Include all fittings, brackets, supports and fitting materials necessary to fix pipework to structures whether or not they are shown on the drawings or specified. Water supply by others to system type AS/NZ 3500 1.2.

SYSTEM DESCRIPTION

Shall be 13mm dia 1.W.T. Poly Ltd - 'Safety flow-wrap' type SPW with pressure compensated drip emitters (or equivalent). Install at approximately 800mm wide spacing TBC with 1.W.T Poly Ltd (or equivalent). Flow rate of approximately 4ltr / hr. Header pipes where required shall be low density polyethylene and or PNG - uPVC grommet style connections to uPVC and barbed fittings for low density PE. On completion ensure that all works conform to relevant site conditions and to comply with the authorities codes.

MAINTENANCE PROGRAM

Maintenance shall mean the care and maintenance of the landscape works by accepted horticultural practice as rectifying any defects that become apparent in the landscape works under normal use for a minimum period of 12 months till practical completion. This shall include but shall not be limited to, watering, mowing, fertilising, reseedling, reurfing, weeding, pest and disease control, staking and tying, replanting, cultivation, pruning, aerating, renovating, topdressing, maintaining the site in a neat and tidy condition as follows:-

GENERAL

The Landscape Contractor shall maintain the landscape works for the term of the maintenance (or plant establishment) period. The Landscape Contractor shall attend to the site on a weekly basis.

WATERING

Grass and trees shall be watered regularly so as to ensure continuous healthy growth.

RUBBISH REMOVAL

During the term of the maintenance period the Landscape Contractor shall remove rubbish that may occur and reoccur throughout the maintenance period. This work shall be carried out regularly so that at weekly intervals the area may be observed in a completely clean and tidy condition.

REPLACEMENTS

The Landscape Contractor shall replace all plants that are missing, unhealthy or dead at the Landscape Contractor's cost. Replacements shall be of the same size, quality and species as the plant that has failed unless otherwise directed by the Landscape Architect. Replacements shall be ande on a continuing basis not exceeding two (2) weeks after the plant has died or is seen to be missing.

STAKES AND TIES

The Landscape Contractor shall replace or adjust plant stakes, and tree guards as necessary or as directed by the Landscape Architect. Remove stakes and ties at the end of the maintenance period if so directed.

PRUNING

Trees and shrubs shall be pruned as directed by the Landscape Architect. Pruning will be directed at the maintenance of the dense foliage or miscellaneous pruning beneficial to the condition of the plants. Any damaged growth shall be pruned. All pruned material shall be removed from the site.

MULCHED SURFACES

All mulched surfaces shall be maintained in a clean and tidy condition and be reinstated if necessary to ensure that a depth of 75mm is maintained. Ensure mulch is kept clear of plant stems at all times.

PEST AND DISEASE CONTROL

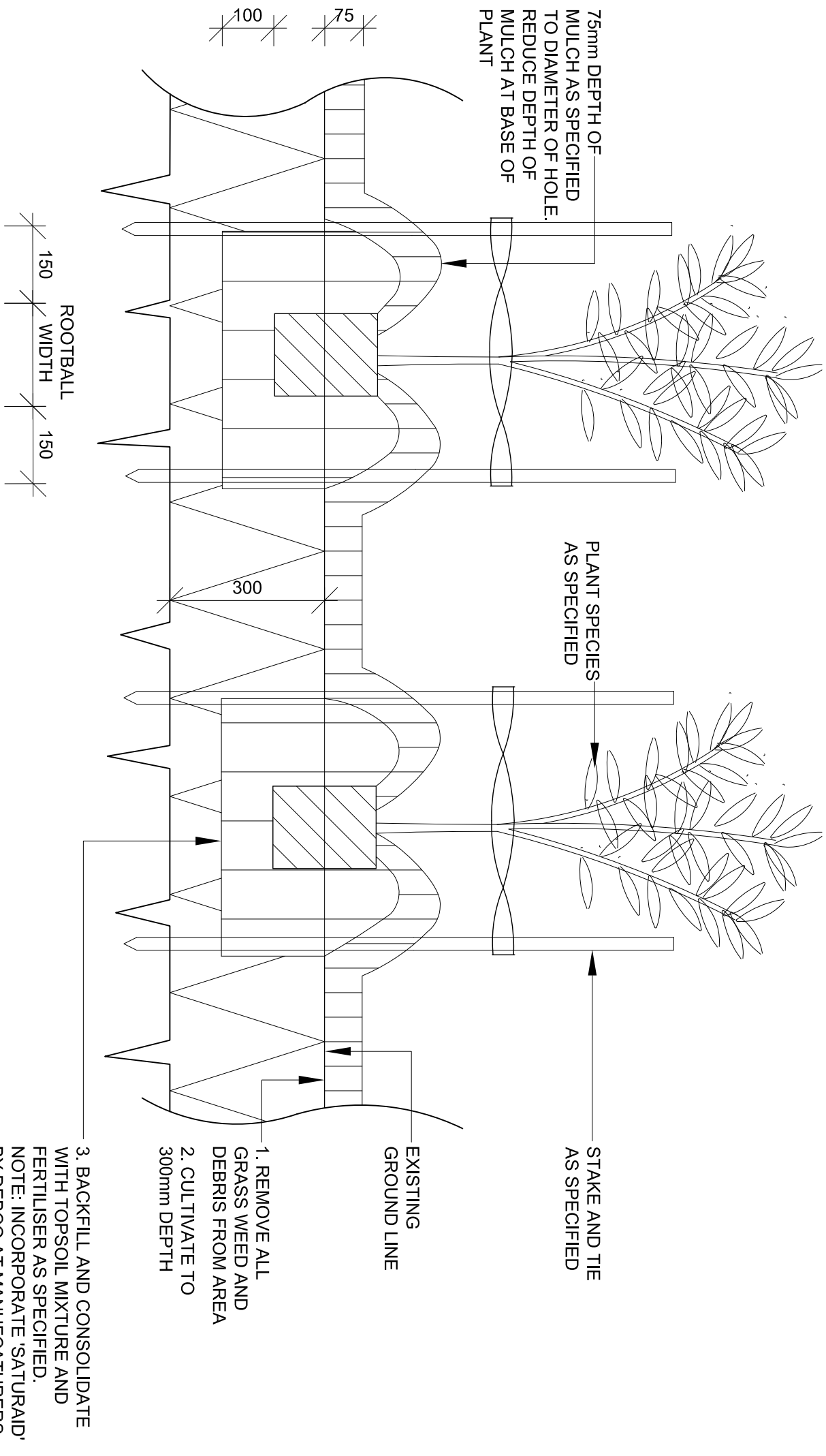
The Landscape Contractor shall spray against insect and fungus infestation with all spraying of an environmentally conscious non-residual product to be carried out in accordance with the manufacturer's directions. Report all instances of pests and diseases (immediately that they are detected) to the Landscape Architect prior to spraying.

WEED ERADICATION

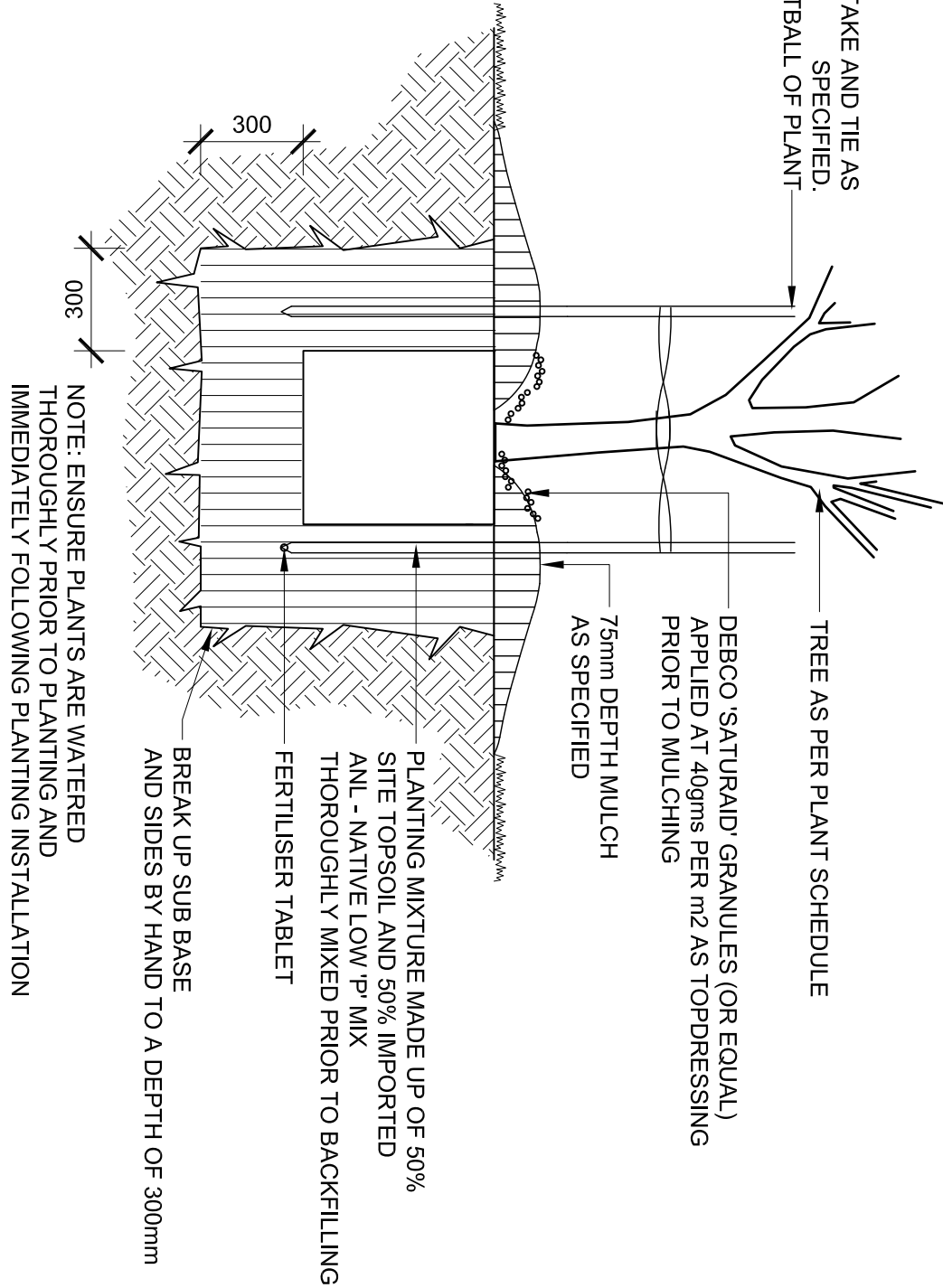
Eradicate weeds by environmentally acceptable methods using a non-residual glyphosate herbicide (eg. Roundup) in any of its registered formulae, at the recommended maximum rate. Regularly remove by hand, weed growth that may occur or recur throughout grassed, planted and mulched areas. Remove weed growth from an area 750mm diameter around the base of trees in grassed areas. Continue eradication throughout the course of the works and during the maintenance period.

SOIL SUBSIDENCE

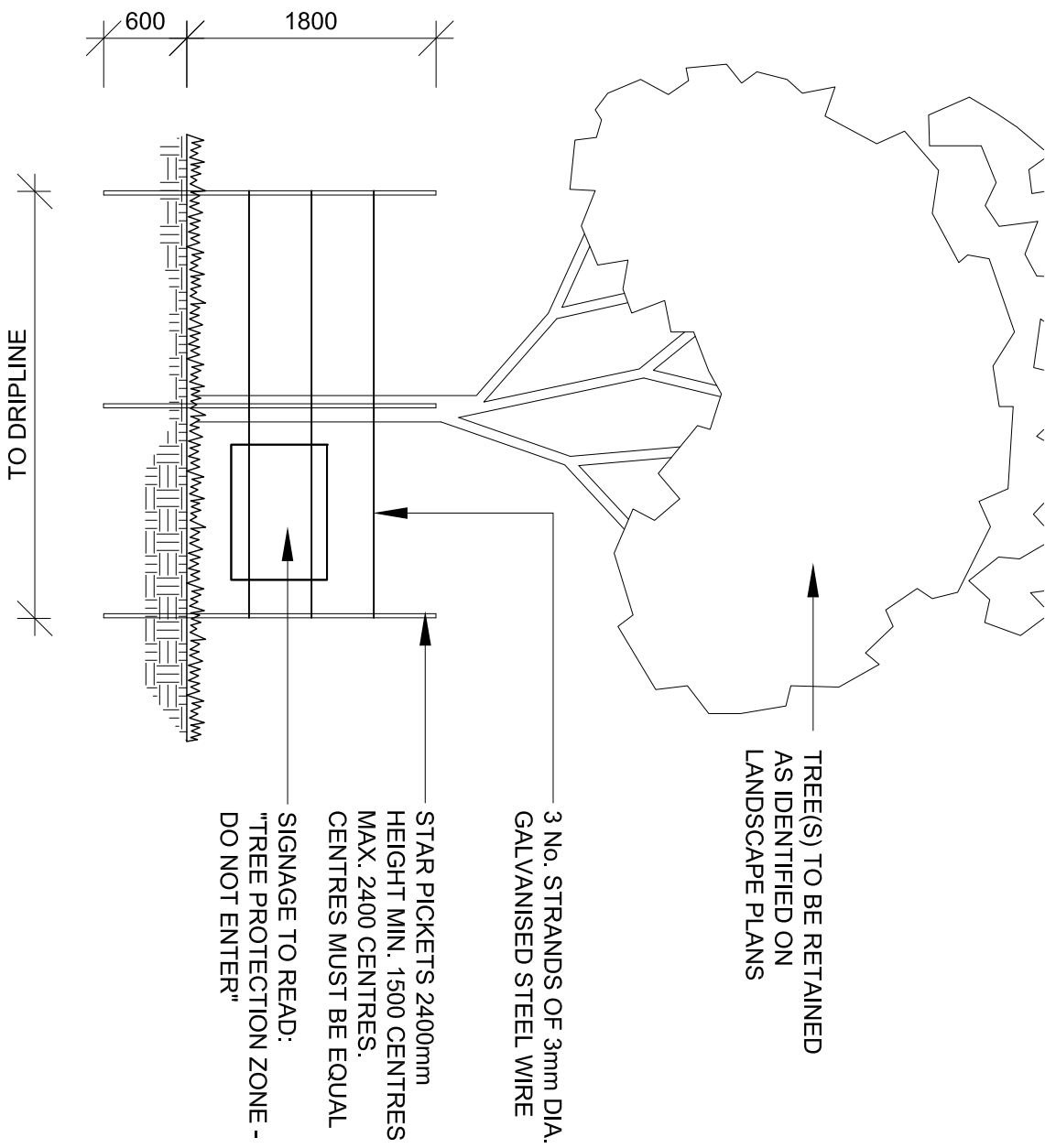
Any soil subsidence or erosion which may occur after the soil filling and preparation operations shall be made good by the Landscape Contractor at no cost to the client.



1 MASS PLANTING-MATRIX TYPICAL SECTION 1:10



2 TREE PLANTING (HAND CULTIVATION) TYPICAL SECTION 1:20



3 TREE PROTECTION SCALE 1:50

CLIENT	ARCHITECTS	ARCHITECTS	PROJECT MANAGER
Sydney Church of England Grammar School (Shore)	P D Moyn Piv Ltd Architects T + 61 2 9938 0488 9956 6424 Blue Street, North Sydney NSW 2060 T + 61 2 9923 2277 F + 61 2 9922 2689	Tomer Architects T + 61 2 9281 4399 9281 4337 Taylor Brommer T + 61 2 9387 8855 9387 8150	Fitzwater Group T + 61 2 8929 6701 8929 9798

Rev	Date	Description	Checked Auth.
A	04.10.11	PART 3A APPLICATION	DMT
B	17.10.11	DWG. NUMBER REVISED	DMT

Proj. Df	Proj. Arch	Drawn
DMT	AC	AC
Job No.	Date	Scale
10-027s		

Project	Revision
GRAYTHWAITE STAGE 1 PROJECT APPLICATION	B
Drawing Title	
EARLY WORKS LANDSCAPE DETAILS	
Drawing No.	
LT.011	

218 Oxford Street, Woollahra NSW, Australia, 2025 Tel: (02) 9387 8855 Fax: (02) 9387 8155 e: sydney@taylorbrommer.com.au	