

LEGEND

PEDESTRIAN ACCESS POINT

VEHICULAR ACCESS POINT

INDICATES DIRECTION OF STEEP SLOPE

UTILITY SERVICE

UNHEALTHY TREE / WEED SPECIES

WATERLOGGED AREA (POOR DRAINAGE)

VIEW CORRIDOR

NEIGHBOURING BUILDING

WINDOW ON NEIGHBOURING BUILDING

NEIGHBOURING PRIVATE OPEN SPACE

STATE HERITAGE REGISTER ITEMS

SCHEDULE 3 HERITAGE ITEMS (NORTH SYDNEY LEP 2001)

SCHEDULE 4 CONTRIBUTORY ITEMS (NORTH SYDNEY LEP 2001)

SCHOOL BUILDINGS OF HERITAGE SIGNIFICANCE

CONSERVATION AREA BOUNDARY

HERITAGE SIGNIFICANCE OF STRUCTURES ON GRAYTHWAITE SITE AS DEFINED IN THE CMP PREPARED BY TANNER ARCHITECTS:EXCEPTIONAL SIGNIFICANCEHIGH SIGNIFICANCEMODERATE SIGNIFICANCELITTLE SIGNIFICANCEINTRUSIVE STRUCTURE

Client
Sydney Church of England
Grammar School (Shore)

Blue Street
North Sydney
NSW 2060

T: +61 2 9923 2277
F: +61 2 9922 2689

ARCHITECTS
Mayoh Architects
T + 61 2 9958 0488
F + 61 2 9958 0424

LANDSCAPE ARCHITECTS
Taylor Brammer
T + 61 2 9387 8855
F + 61 2 9387 8155

ARCHITECTS
Tanner Architects
T + 61 2 9281 4399
F + 61 2 9281 4337

PROJECT MANAGER
WSP Fitzwallter
T + 61 2 8925 6701
F + 61 2 8925 6798

Rev.	Date	Description	Checked	Auth.
A	09/11/10	CONCEPT PLAN PART 3A APPLICATION	JS	PM

Proj. Dir.
PM

Proj. Arch.
JS

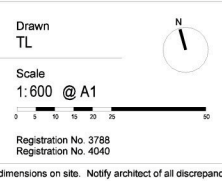
Job No.
0910

Date

Scale
1:600 @ A1

NSW Nominated Architects:
Peter Mayoh
Arthur Gartrell
Registration No. 4040

Do not scale drawings. Verify all dimensions on site. Notify architect of all discrepancies



Project
GRAYTHWAITE - CONCEPT APPLICATION
SYDNEY CHURCH OF ENGLAND
GRAMMAR SCHOOL (SHORE)

Drawing Title
SITE ANALYSIS PLAN (EXISTING)

Drawing No. A.005

Revision A

PO Box 690
Darlinghurst
NSW 1500
Australia

52 Albion Street
Surry Hills
NSW 2010
Australia

T +61 2 9281 4399
F +61 2 9281 4337
info@tannerarchitects.com.au
www.tannerarchitects.com.au

tanner Architects



60 Strathallen Avenue, Northbridge
NSW 2063 - Australia
T: 02 9958 0488 ; F: 02 9958 6424