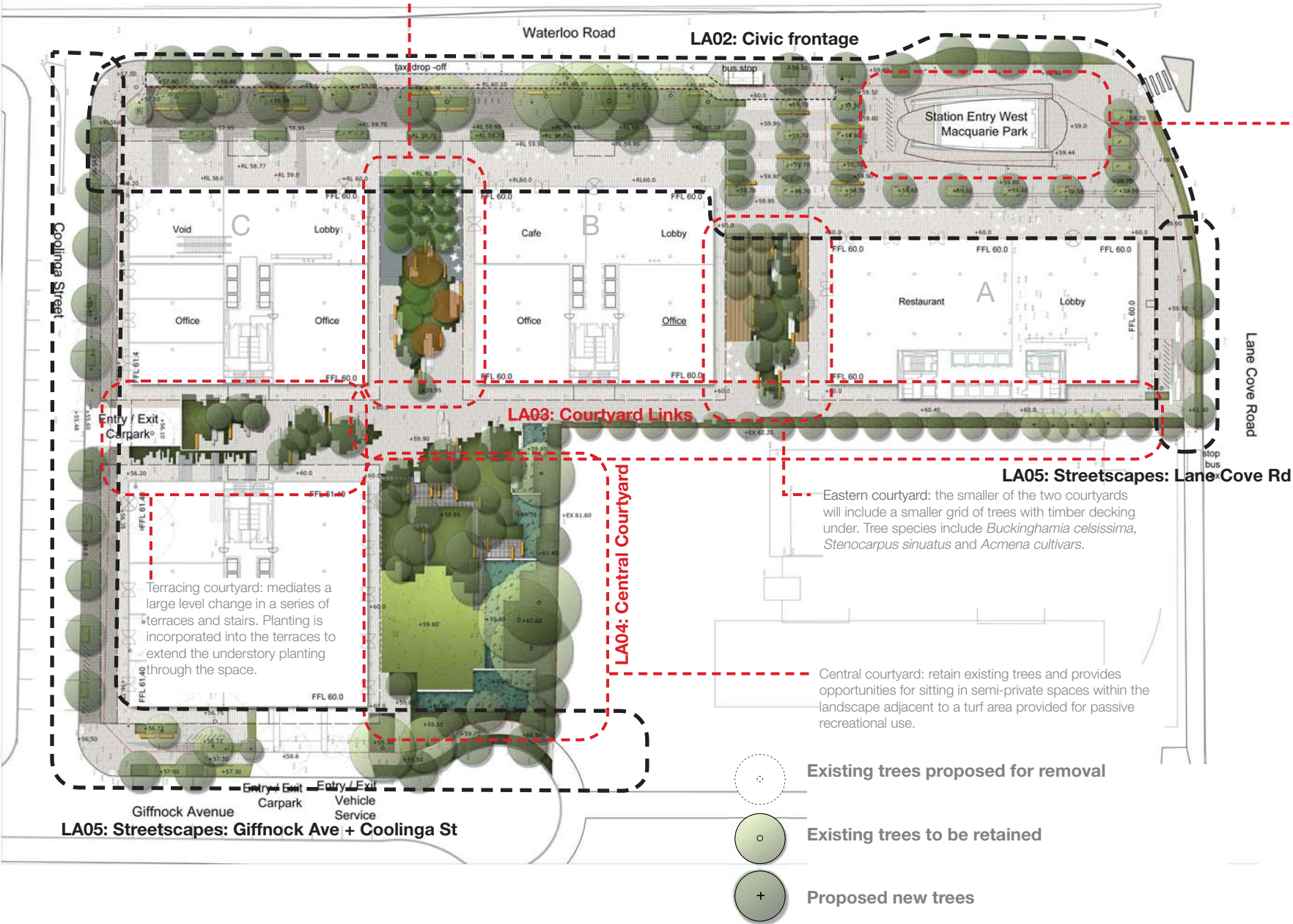


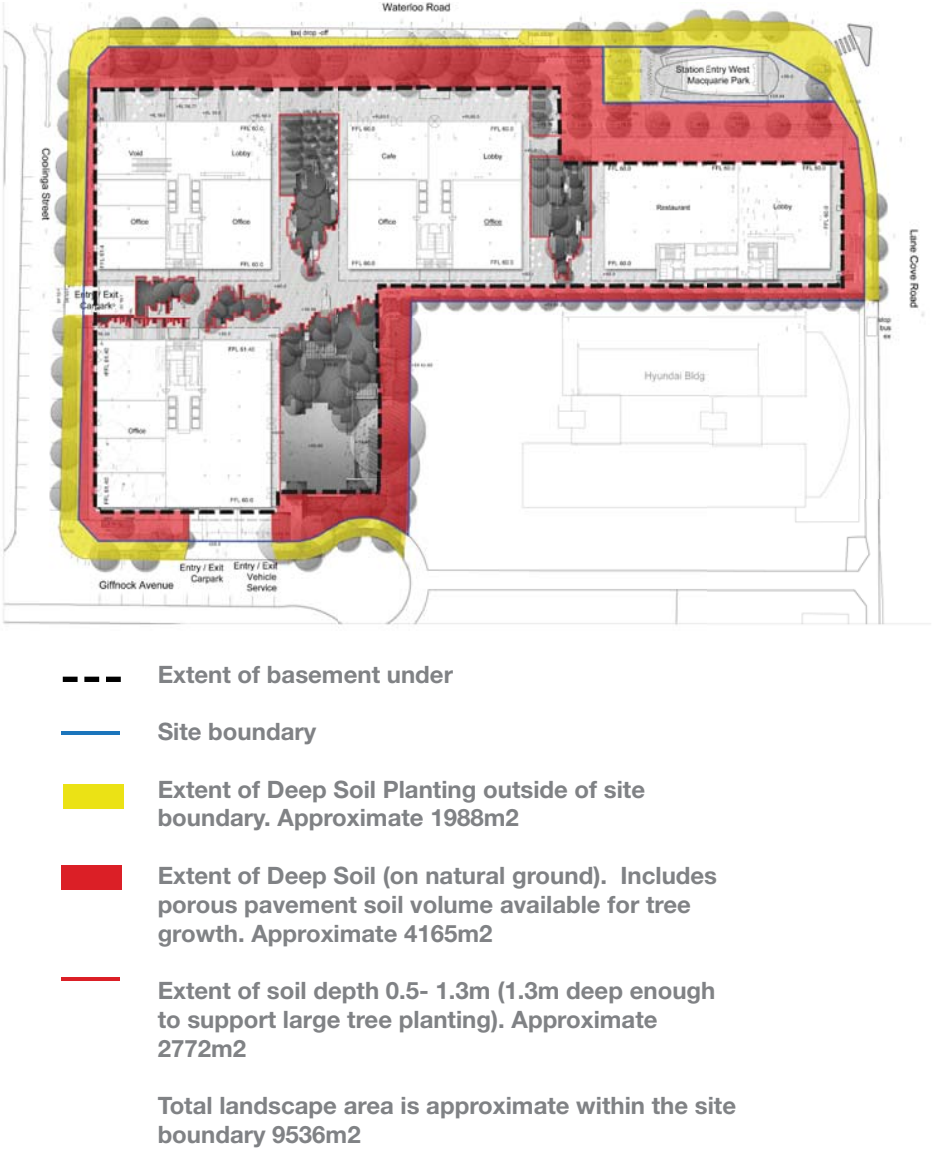
Location Plan
NTS



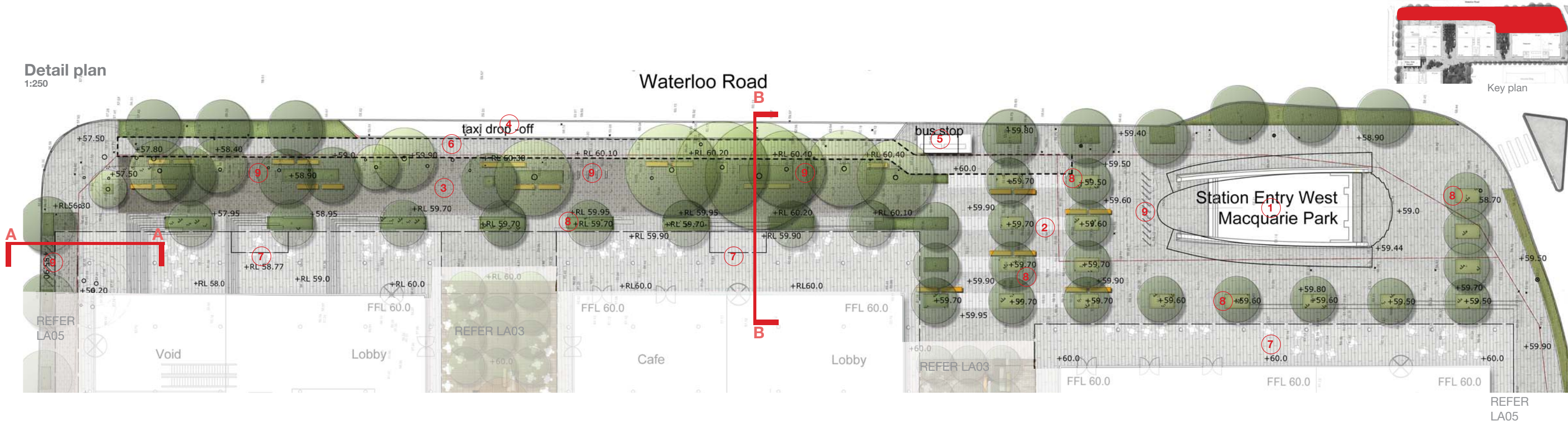
Concept Master Plan
1:500



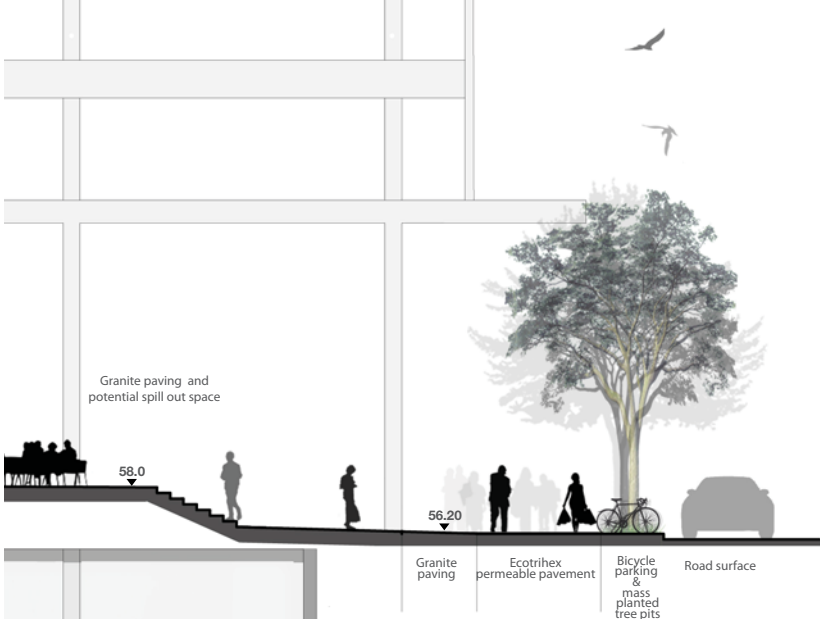
Soil Depth
(deep soil and on slab)
1:1000



Detail plan
1:250



Section A-A
1:100



Section B-B
1:100



Key

- Existing Macquarie Park Train Station
- Station plaza
 - New granite unit pavement with bands of decorative porous pavement (structural soil below for stormwater treatment and tree health)
 - Grove of trees: *Waterhousia floribunda* 'Sweeper'
 - Bench seats
 - Bicycle racks
- Civic frontage
 - Ecotrihex permeable pavement (to ensure continued health of significant existing *Eucalyptus* trees along Waterloo Road)
 - Existing *Eucalyptus* trees retained in mass planted tree pits (significant trees to be protected in accordance with future aboriginal advice)
 - New and existing trees in terrabond tree pits to enable ease of pedestrian movement through the civic plaza area
 - New street tree planting: *Eucalyptus saligna*
 - Mass planting to tree pits: native grasses and groundcovers. (see Plant Schedule: Understorey below)
 - Bench seating
- New taxi drop off and 'kiss and ride' kerb layback
- New bus stop (relocated from further west on Waterloo Rd) with new bus shelter
- Potential 'future' bicycle path shown dotted. To be paved in granite stone to match footpaths, with the potential to be converted to a bicycle path (asphalt as per technical manual) if future demands require
- Colonnade to building frontage
 - Granite pavement
 - Stair transition to corner, with raised seating edges and mass planting
 - Undercover spill-out space
- Raingardens
 - WSUD infiltration pits mass planted with native grasses and reeds
 - Tree planting: *Lophostemon confertus*
- Bicycle parking to Ryde Council's standards

Indicative plant schedule

BOTANICAL NAME	COMMON NAME	MATURE HEIGHT	POT SIZE	SPACING
Trees				
<i>Eucalyptus saligna</i>	Sydney Blue Gum	25m	200L	As shown
<i>Lophostemon confertus</i>	Brush Box	16m	200L	As shown
<i>Waterhousia floribunda</i> 'Sweeper'	'Sweeper' Weeping Lillypilly	12m	200L	As shown
Understorey				
<i>Isolepis nodosa</i>	Knobbly Club Rush	1000mm	150mm	300mm
<i>Carex appressa</i>	Tall Sedge	800mm	150mm	300mm
<i>Lomandra longifolia</i> 'Tanika'	'Tanika' Mat Rush	500mm	150mm	400mm
<i>Libertia paniculata</i>	Branching Flag Grass	300mm	150mm	300mm
<i>Lomandra cassica</i>	Mat Rush	400mm	150mm	400mm
<i>Anigozanthos</i> 'Regal Velvet'	Kangaroo Paw	1000mm	150mm	400mm
<i>Pratia pedunculata</i>	Matted Pratia	100mm	50mm	300mm
<i>Scaevola</i> 'Purple Fan Fare'	Fan Flower	300mm	150mm	500mm
<i>Hibbertia scandens</i>	Guinea Flower	300mm	150mm	500mm

Precedent images



Ecotrihex pavement, Macquarie University, ASPECT Studios photograph, 2010



Mass planted verge, ASPECT Studios photograph, 2010



Steps and planting, ASPECT Studios photograph, 2008



Raingarden, Pirrama Park, ASPECT Studios photograph, 2009



Bench seating, Santa & Cole, product range



Planted tree pit, ASPECT Studios photograph, 2009

Macquarie Park Commerce Centre | Waterloo Rd Macquarie Park



Concept Design

Client:



WINTEN
PROPERTY
GROUP



AUSTRALAND

Architect: Bates Smart

Drawn: AC
Checked: KL

Scale: Varies @ A1
Date: Aug 23/ 2011

Dwg no.: 10030 - LA02
Rev: G



Civic Frontage : Waterloo Rd + Station interface

Detail plan
1:250



Key

1.

a. Western Plaza Courtyard

 - Varied seating opportunities amongst rainforest planting
 - Contrasting paving laid around grid of trees
 - Opportunity for cafe spill-out with moveable furniture

b. Eastern Plaza Courtyard

 - Smaller grid of trees with timber decking under
2.

Garden links

 - Tree and understory species (see plant schedule below)
 - Mulch surface allowing meandering through the garden
 - Bench seating
3.

Porous concrete unit pavement in decorative bands
4.

Terraced courtyard

 - Stair entry with wide seating edges
 - Raised concrete and sandstone bench seats
 - Rainforest tree and understory species (see plant schedule below)
5.

Thru-site link

 - Mass planting and row of trees to boundary: *Tristania laurina* 'Luscious'
 - Small unit concrete pavers

Indicative plant schedule

BOTANICAL NAME	COMMON NAME	MATURE HEIGHT	POT SIZE	SPACING
Trees				
<i>Buckinghamiana cellisissima</i>	Ivory Curl Tree	8m	100L	As shown
<i>Backhousia citriodora</i>	Lemon Scented Myrtle	10m	200L	As shown
<i>Robinia pseudoacacia</i>	Black Locust	10m	200L	As shown
<i>Stenocarpus sinuatis</i>	Firewheel Tree	10m	200L	As shown
<i>Tristania laurina</i> 'Luscious'	Water Gum	10m	200L	As shown
<i>Acmena cvs.</i>	Lillypilly	10m	200L	As shown
Understorey				
<i>Cyathea cooperii</i>	Tree Fern	1.5m	200mm	1000mm
<i>Blechnum nudum</i>	Fishbone Fern	500mm	200mm	400mm
<i>Pteridium esculentum</i>	Bracken Fern	400mm	200mm	300mm
<i>Viola hederacea</i>	Native Violet	300mm	150mm	300mm
<i>Asplenium australasicum</i>	Bird's Nest Fern	1.5m	200mm	1000mm
<i>Dianella caerulea</i>	Flax Lily	400mm	150mm	300mm
<i>Cordyline petiolaris</i>	Broad-leafed Palm Lily	1m	200mm	1000mm
<i>Lomandra hystrix</i> 'Katie Belle'	Mat Rush	500mm	200mm	400mm
<i>Cordyline stricta</i>	Common Cordyline	1m	200mm	800mm
<i>Molinera capitulata</i>	Weevil Lily	1m	200mm	800mm
<i>Adiantum aethiopicum</i>	Maidenhair Fern	300mm	150mm	300mm
<i>Clematis aristata</i>	Southern Clematis	200mm	150mm	1000mm
<i>Plectranthus</i> 'Mona Lavender'	Lavender Spur Flower	200mm	150mm	300mm

Precedent images



Macquarie Park Commerce Centre | Waterloo Rd Macquarie Park

Concept Design

Courtyard Links

Public art opportunity>



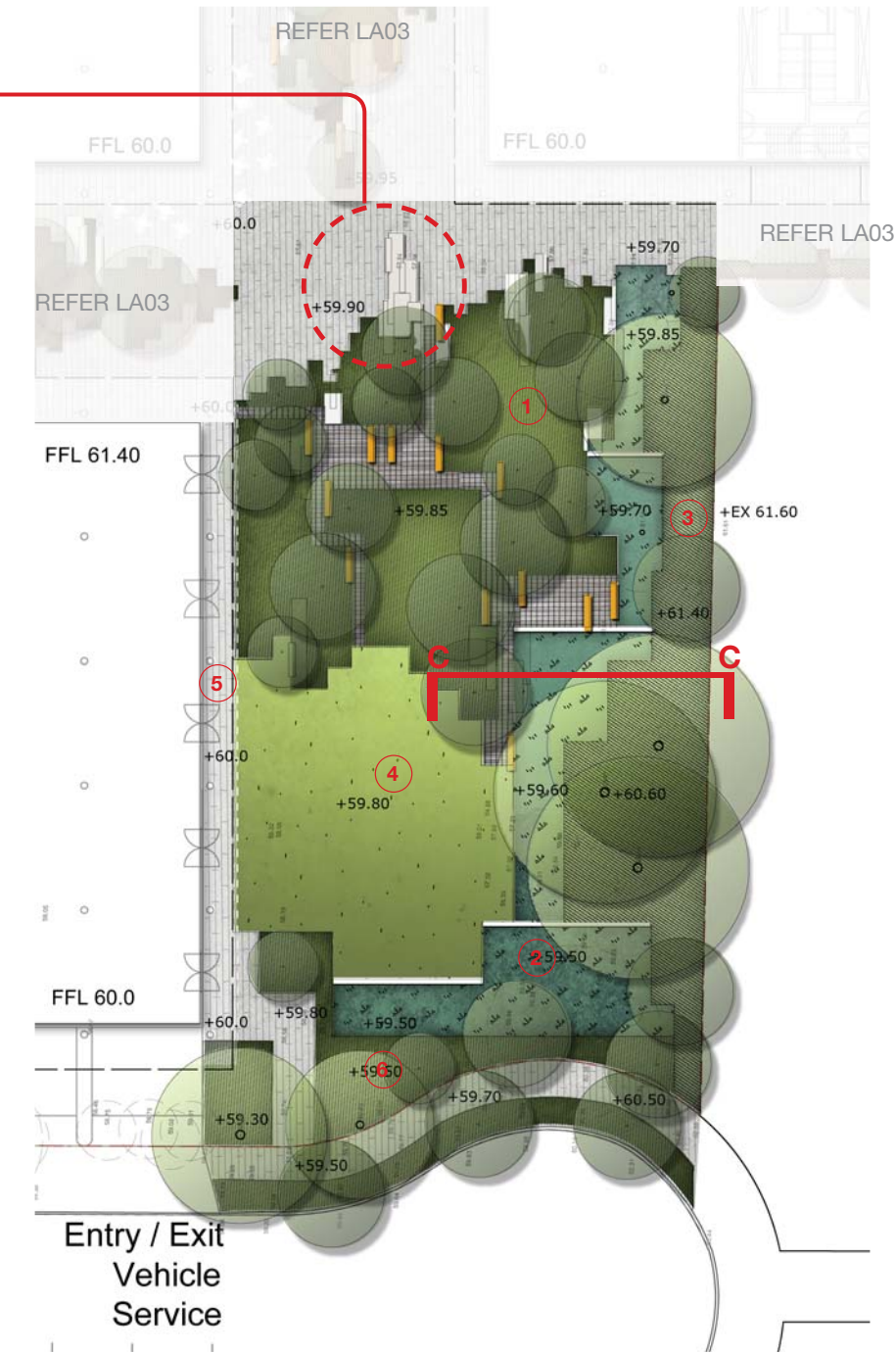
- Potential for public art to draw on the site's geological characteristics of exposed sandstone outcrops within a forest setting
- Potential for the public art to be a sculptural element that may also provide playful seating/ gathering opportunity, or include water
- Located at the collision of the main routes of travel and desire lines through the development

Key

1. Rainforest Stroll Garden
 - Rainforest tree and understory species
 - Grove tree planting (refer plant schedule)
 - Opportunity for moveable and fixed furniture to cater for a range of group gatherings and functions
 - Mulch surface allowing informal meandering through the garden
 - Timber path and decks
2. WSUD infiltration bed
 - Stormwater management zone: planted infiltration bed whereby stormwater is filtered and piped to a storage tank for re-use
 - Mass planted with a range of native grasses, rushes and reeds
3. Planted buffer to boundary
 - Significant existing trees retained along boundary edge
 - Supplementary native canopy tree planting (refer plant schedule)
 - Mass planted understory and screen planting (refer plant schedule)
4. Informal turf area
 - Potential use for creche/ gym spill-out
5. Concrete unit pathway
6. Planted setback
 - Significant existing trees retained where possible
 - Additional tree planting: Angophora floribunda, to supplement existing and create a double row to the streetscape
 - Mass planted understory of native grasses and groundcovers (refer plant schedule)

Detail plan

1:250



Section C-C

1:100



Indicative plant schedule

BOTANICAL NAME	COMMON NAME	MATURE HEIGHT	POT SIZE	SPACING
Trees				
Buckinghamiana cellisissima	Ivory Curl Tree	8m	100L	As shown
Flindersia xanthoxyla	Yellow-wood	25m	200L	As shown
Melaleuca linariifolia	Flax Leaf Paperbark	8m	200L	As shown
Stenocarpus sinuatis	Firewheel Tree	10m	200L	As shown
Angophora floribunda	Rough-barked Apple	20m	200L	As shown
Tristania laurina	Water Gum	10m	200L	As shown
Understorey				
Cyathea cooperii	Tree Fern	1.5m	200mm	1000mm
Blechnum nudum	Fishbone Fern	500mm	200mm	400mm
Pteridium esculentum	Bracken Fern	400mm	200mm	300mm
Viola hederacea	Native Violet	300mm	150mm	300mm
Asplenium australasicum	Bird's Nest Fern	1.5m	200mm	1000mm
Dianella caerulea	Flax Lily	400mm	150mm	300mm
Cordylina petiolaris	Broad-leafed Palm Lily	1m	200mm	1000mm
Cordylina stricta	Common Cordylina	1m	200mm	800mm
Adiantum aethiopicum	Maidenhair Fern	300mm	150mm	300mm
Clematis aristata	Southern Clematis	200mm	150mm	1000mm
Isolepis nodosa	Knobbly Club Rush	1000mm	150mm	300mm
Carex appressa	Tall Sedge	800mm	150mm	300mm
Lomandra longifolia 'Tanika'	'Tanika' Mat Rush	500mm	150mm	400mm
Libertia paniculata	Branching Flag Grass	300mm	150mm	300mm
Restio tetraphyllus	Tassel Rush	1200mm	200mm	500mm
Anigozanthus 'Regal Velvet'	Kangaroo Paw	1000mm	150mm	400mm
Pratia pedunculata	Matted Pratia	100mm	50mm	300mm
Scaevola 'Purple Fan Fare'	Fan Flower	300mm	150mm	500mm

Precedent images



Macquarie Park Commerce Centre | Waterloo Rd Macquarie Park



Concept Design



Architect: Bates Smart

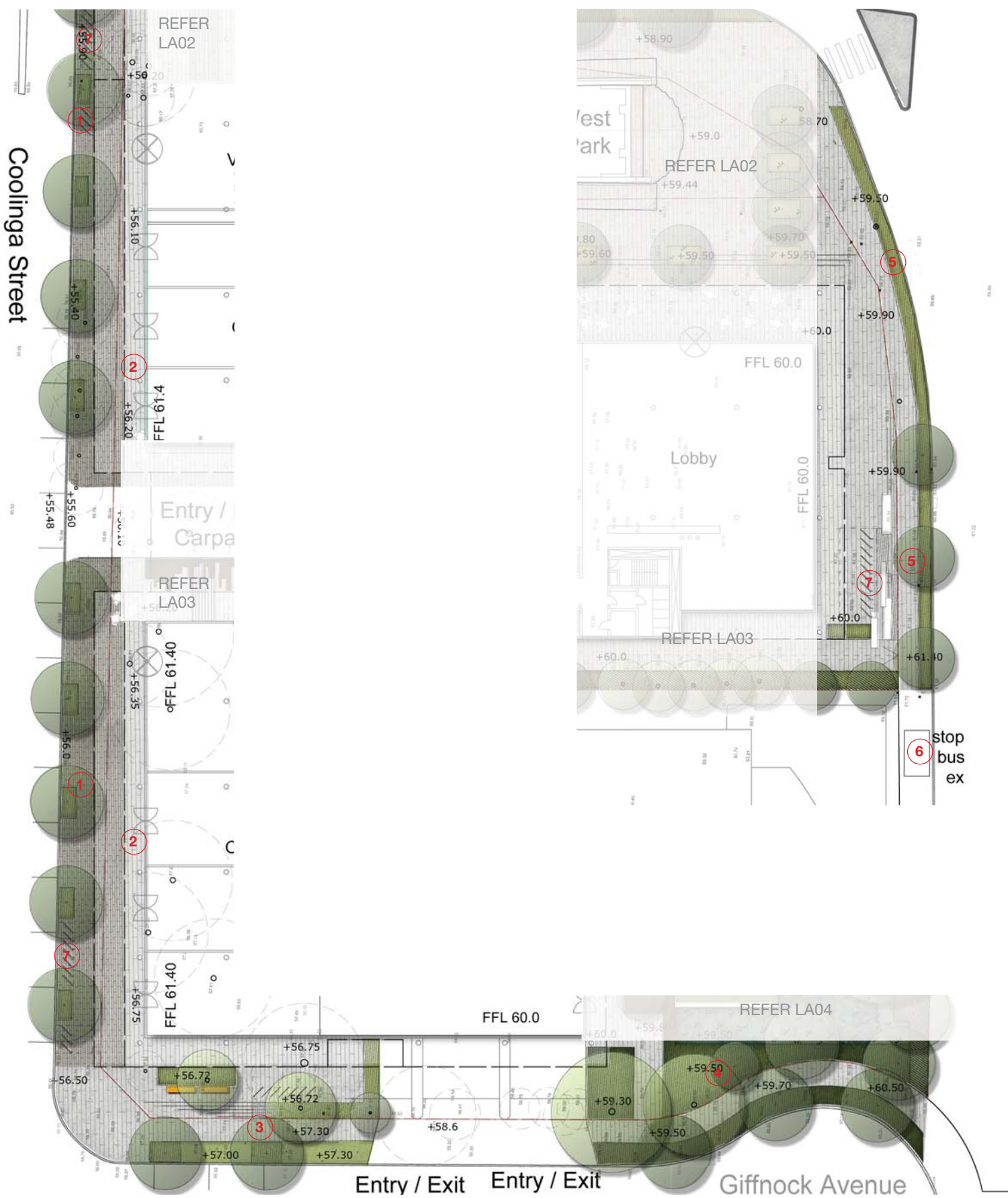
Drawn: AC
Checked: KL

Scale: Varies @ A1
Date: Aug 23/ 2011

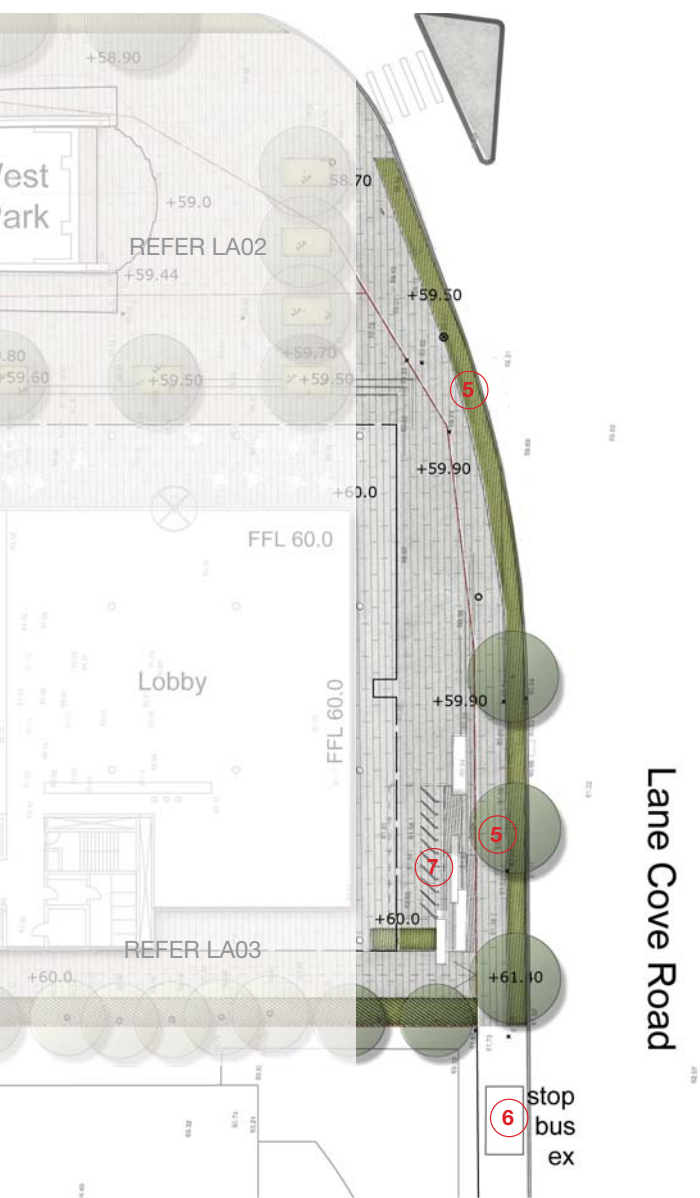
Dwg no. : 10030 - LA04
Rev: G



Detail plan: Giffnock Ave+ Coolinga St
1:250



Detail plan: Lane Cove Rd
1:250



Key

1.

Coolinga Street streetscape works
 - Ecotrihex footpath pavement
 - Pavement extended to maximise active frontage spill-out
 - New street tree planting: Eucalyptus microcorys in mass planted tree pits.
 - Potential for installation of WSUD (infiltration) tree pit
2.

Concrete unit pavement to building frontage under colonnade
3.

Giffnock Avenue Streetscape works
 - Granite unit pavement to footpath
 - New street trees in mass planted tree pits and turf verge: Angophora floribunda. Potential for installation of WSUD (infiltration) tree pit
 - Concrete unit pavement to building frontage
 - Stair access
 - Significant existing trees retained in mass planted beds
 - New bench seating
4.

Mass planted verge where no access to vehicular parking on street is required
5.

Lane Cove Road Streetscape works
 - Granite unit pavement
 - New street tree planting: Lophostemon confertus in mass planted verge
 - Planted verge proposed to provide a barrier between pedestrians and a busy section of Lane Cove Rd
 - Stair access to tenancies. Bench seating and bands of planting to break extent of stairs. Intended to make reference to the geology of the site; sandstone outcrops and perched planting
6.

Existing bus stop on adjacent site
7.

Bicycle parking to Ryde Council's standards

Indicative plant schedule

BOTANICAL NAME	COMMON NAME	MATURE HEIGHT	POT SIZE	SPACING
Trees				
Eucalyptus microcorys	Tallowwood	20m	200L	As shown
Angophora floribunda	Rough-barked Apple	20m	200L	As shown
Lophostemon confertus	Brush Box	15m	200L	As shown
Understorey				
Isolepis nodosa	Knobbly Club Rush	1000mm	150mm	300mm
Carex appressa	Tall Sedge	800mm	150mm	300mm
Lomandra longifolia 'Tanika'	'Tanika' Mat Rush	500mm	150mm	400mm
Libertia paniculata	Branching Flag Grass	300mm	150mm	300mm
Lomandra Cassica	Mat Rush	400mm	150mm	400mm
Anigozanthus 'Regal Velvet'	Kangaroo Paw	1000mm	150mm	400mm
Pratia pedunculata	Matted Pratia	100mm	50mm	300mm
Scaevola 'Purple Fan Fare'	Fan Flower	300mm	150mm	500mm
Hibbertia scandens	Guinea Flower	300mm	150mm	500mm
Scaevola 'Purple Fan Fare'	Fan Flower	300mm	150mm	500mm

Precedent images

