



13.3_Block Masing Studies

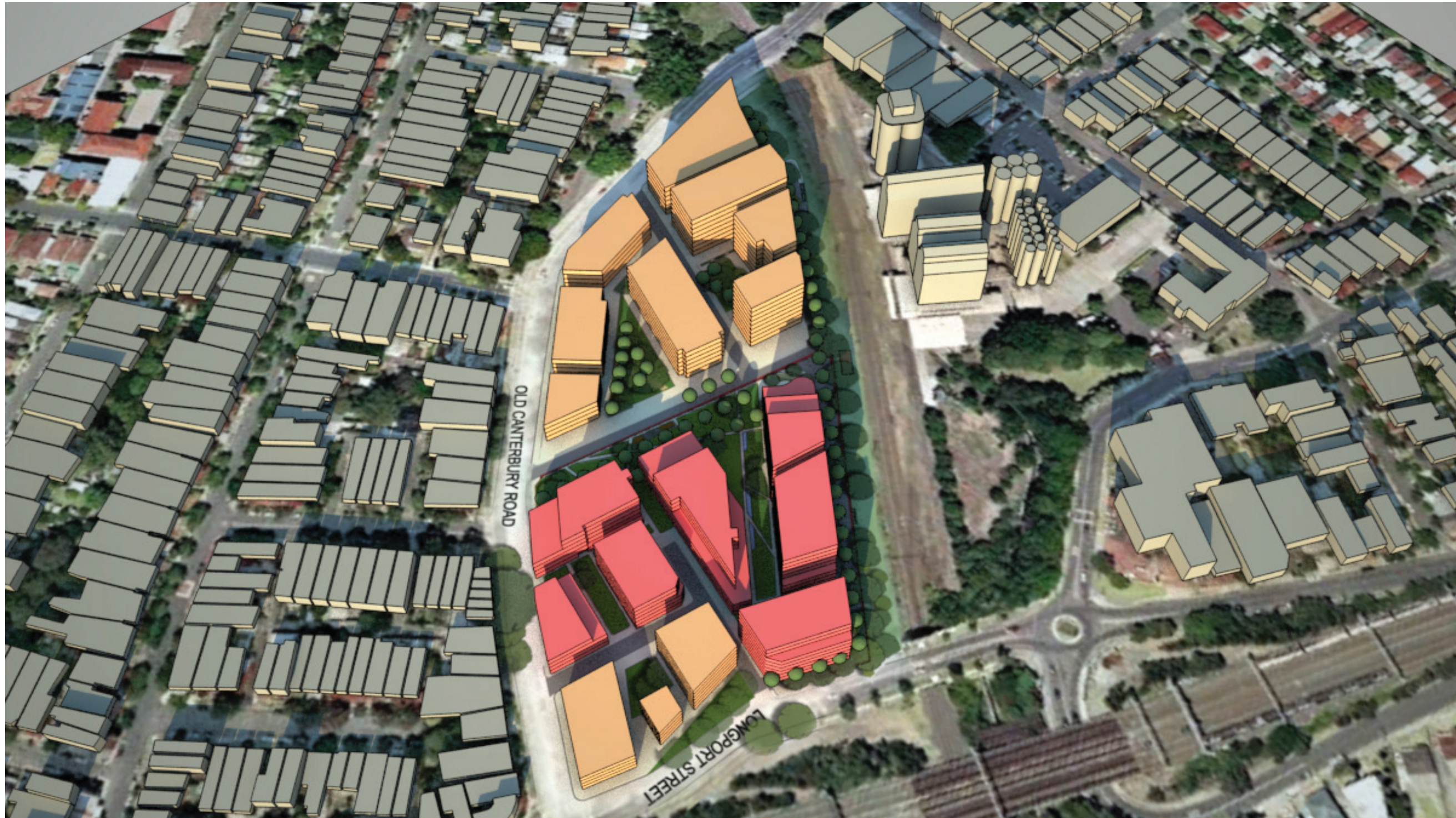
View 3



-  LEWISHAMM ESTATE SITE
-  ADJOINING SITES -SUBJECT TO SEPERATE APPROVAL

13.4_Block Masing Studies

View 4





- LEWISHAMM ESTATE SITE
- ADJOINING SITES -SUBJECT TO SEPERATE APPROVAL

13.5_Block Masing Studies

View 1





-  LEWISHAMM ESTATE SITE
-  ADJOINING SITES -SUBJECT TO SEPERATE APPROVAL

13.7_Block Masing Studies

View 2





-  LEWISHAMM ESTATE SITE
-  ADJOINING SITES -SUBJECT TO SEPERATE APPROVAL

13.8_Block Masing Studies

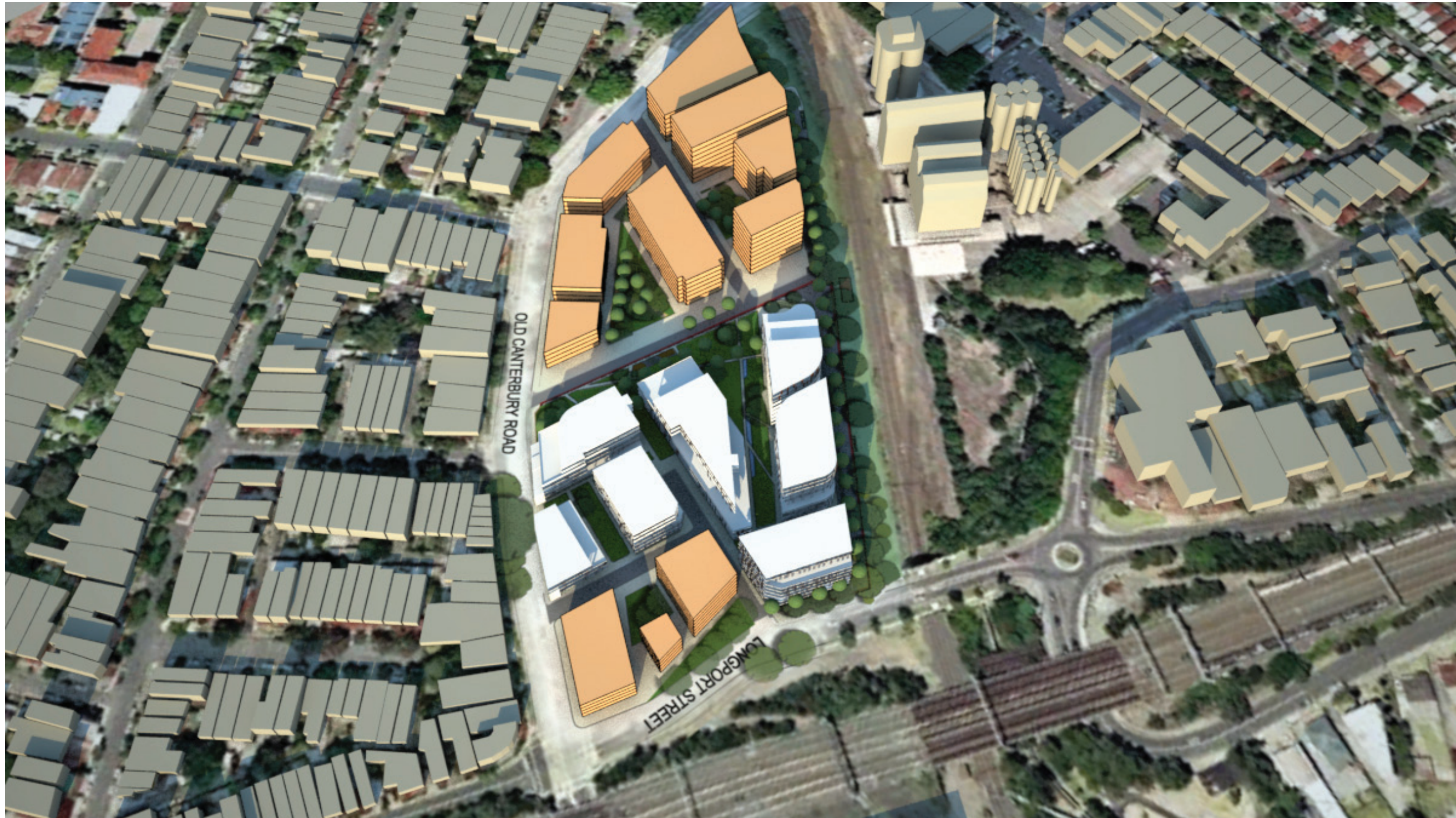
View 3





-  LEWISHAMM ESTATE SITE
-  ADJOINING SITES -SUBJECT TO SEPERATE APPROVAL

13.9_Block Masing Studies

View 4



-  LEWISHAM ESTATE SITE
-  ADJOINING SITES -SUBJECT TO SEPERATE APPROVAL

14.0_View Analysis Study Plan



14.1_View Analysis Study Plan

VIEW 1 - CORRECTED - NOVEMBER 2011



14.1_View Analysis Study Plan

VIEW 1 - PREVIOUS SUBMISSION - MARCH 2011



14.2_View Analysis Study Plan

VIEW 2 - CORRECTED - NOVEMBER 2011

