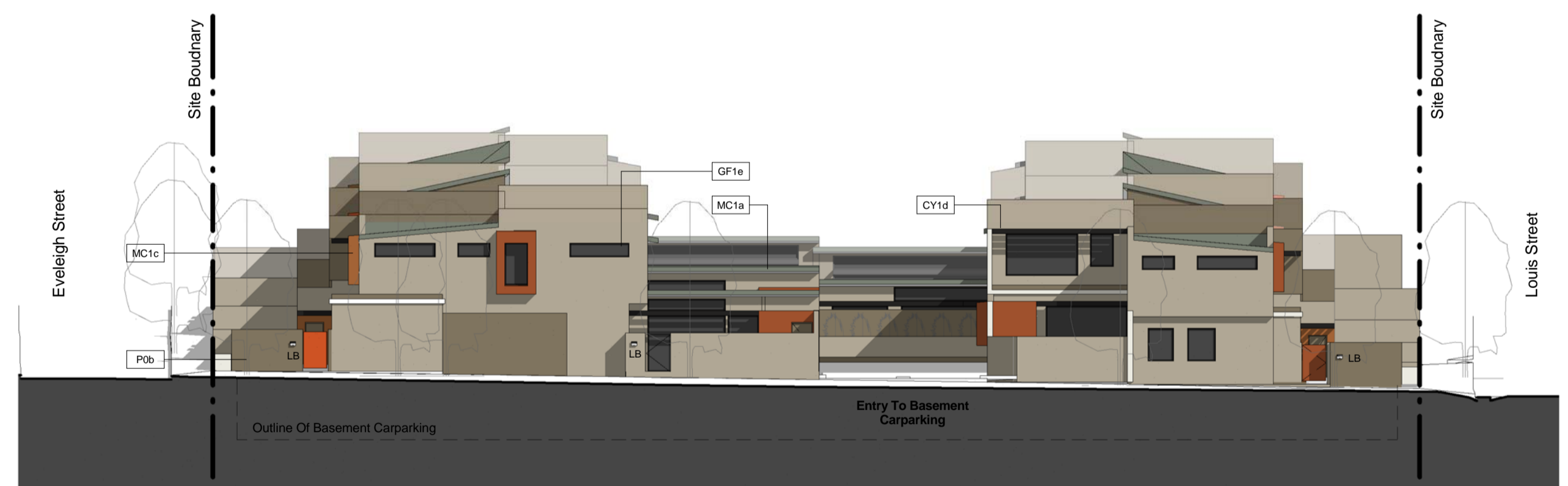




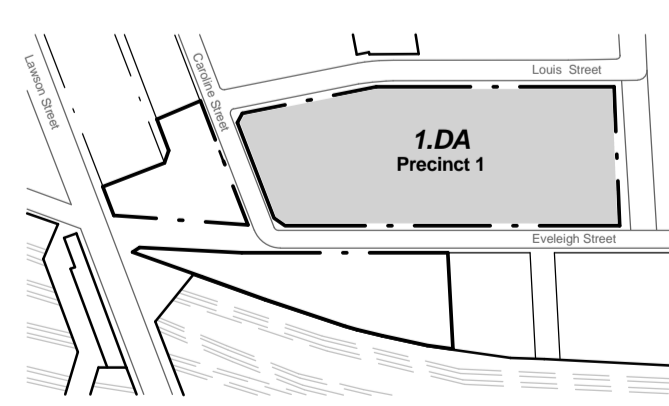
1 Louis Street (West Elevation)
1 : 200

Abbreviations / Finishes Schedule

ART	Community Art Work Elements	LV1b	Prefinished Aluminium Fixed Horizontal Louvre Panels above Retail Units Facing Louis Street (See also CPY1b)
BO	Bollard Types	MC	External Cladding And Roof Lining Types
BO1	Standard Fixed Bollard	MC1a	Prefinished Lysaght KlipLok 700 Roofing Sheets (OEA) Finished In Colourbond "Bushland" With Box Gutter Finish To Match To Terrace Housing
BO2	Removable Bollard	MC1b	Proprietary External Wall Panel Cladding System With Expressed Joints To Eastern Elevation Of Apartments - Colour Variations To Match P0c, P1a, P1b and P1c
BS	Base Stone / Rack	MC1c	Proprietary External Wall Panel Cladding System With Concealed Joints To Window Box Elements - Colour Variations To Match P1a, P1b and P1c
CY	Canopy Types	MC1d	Corten Steel Cladding Panel With Laser Cut Pattern Fixed Over Split Batten Frame System To Common Terrace Entry's
CY1a	Prefinished Suspended Steel Framed Canopy With Curved Metal Panel Sillit To Pamulwuy Place And Gym Entry	MC1e	Prefinished Lysaght KlipLok 700 Roofing Sheets (OEA) Finished In Colourbond "Surfman" To Apartment Block
CY1b	Prefinished Steel Framed Fixed Louvre Canopy Over Terrace Entry To Retail Units Facing Louis Street	P	Applied Coatings (Refer Also to Drawing ODA900)
CY1c	Prefinished Aluminium Grille Sun Shading Canopy To North Facing Residential Apartment Windows	P0a	Base Building Colour To Match - Dulux / Lineed / P15.B3
CY1d	Prefinished Steel Framed Box Section Sun Louvre Canopies To Townhouses Facades and Terraces	P0b	Secondary Feature Face Colour To Match - Dulux / Swampy / P15.B6
FE	Fire Exit - Point Of Discharge To Open Space	P0c	Slab Edge and Blade 'Cut' Colour To Match - Dulux / Whisper White / PCW/P74161
FHBV	Fire Hydrant Booster Valves	P1a	Feature #1 Colour To Match - Dulux / Play School / P09.H9
FT	Fence / Screen Types	P1b	Feature #2 Colour To Match - Dulux / Warmth / P09.G9
FT1a	Prefinished Vertical Batten Fencing With Colour Variations To Townhouses Terraces	P1c	Feature #3 Colour To Match - Dulux / Hot Ginger / P10.F9
GF	Glass Framing Systems (All Frames To Comply With AS2047)	RL	Relative Level
GF0a	Framed Curtain Wall System With Proprietary Door and Window Opening Systems With Black Powdercoat Finish (Retail - Precincts P1 / P2)	RS	Roller Shutter Types
GF1a	Framed Curtain Wall System With Black Powdercoat Finish To Gym Areas	RS1	Prefinished Secure Entry & Exit Shutter To Residential Basement Parking at Vine Street
GF1b	Frameless Glass Curtain Wall System With Laminated High Resolution Transparent Image Of Aboriginal Australia Flag Applied To Inside Face	TS	Tile And Paver Types (Slip Resistance Grade Of Tiles To Be Selected To Relevant To Use And Exposure)
GF1c	Framed Curtain Wall System With Black Powdercoat Finish To Residential Foyer	TS1a	300x600mm Floor Tiles To General Areas - Retail / Gym / Basement
GF1d	Prefinished Metal Framed Sliding Door Sets To Residential Apartments And Townhouses With Black Powdercoat Finish	TS1c	300x600mm Direct Stick Floor Tiles To Residential Foyer / Lobbies Areas
GF1e	Prefinished Metal Framed Window Systems To Residential Apartments And Townhouses With Black Powdercoat Finish	TS1d	600x600mm External Paver To Residential Terrace & Balcony Areas
GL	Glazing Types (To Comply With AS1288)	TS1e	300x600mm Direct Stick Floor Tiles To Kitchen Areas Of Apartments and Townhouses
HT	Handrail/Balustrade Types (All Glazing Components To AS1288)	TS1f	300x300mm Tiles Laid To Falls In Bath Rooms And Lady's To Apartments and Townhouses
HT1a	Prefinished Steel Framed Balustrades with Extruded Aluminium Handrail And Glazed Baluster Panels With Graded Fit Pattern To Residential Balconies	WP	Waterproofing Systems
LB	Letter Boxes (Installed To Comply With Australian Post Regulations)	WP0a	Sheet Membrane To Flat Roof Areas (Generally Screen Membrane/Insulation/Balast)
LV	Louvre Types	WS	Wheel Stops (To Comply To AS 2890.1)
LV1a	Prefinished Aluminium Fixed Vertical Louvres To Residential Balconies Finished As Clear Anodised		



2 Vine Street (North Elevation)
1 : 200



Development Application		
Rev	Description	Date
A	Preliminary DA Issue For Review	11.07.11
B	Preliminary DA Issue For Review	20.07.11
C	Development Application Issue	14.12.11

General Notes:

Architectural Drawings To Be Read In Conjunction With All Other Consultants Detailed Drawings, Reports And Specifications.

All Levels Indicated Taken To Australian Height Datum (AHD)

Refer To ODA900 For Abbreviation Schedule And Proposed Outline Colour Selections And Finishes Selections.

Site Underlay Based On Survey Carried Out By Denny Linker For Previous Application and Subsequent Survey Work Carried Out By Daw & Walton Consulting Surveyors - Refer To Drawing 302995.



CNR PARRAMATTA RD & JOHNSTON ST - PO BOX 254 - ANNANDALI - NSW 2038 - T.02 9517 2822 F.02 9517 2833
STEPHEN J. NORDON REGISTRATION No. NSW - 4704 GRAHAM P. JAGO REGISTRATION No. NSW - 4926

Precinct 1 - Pemulwuy Project, Mixed Use Development, REDFERN

TITLE	North & West Elevations	J:\DE00210 Pemulwuy Project\4 NIA Documentation\6 CADD\3 DA\01 Model\01 Current\DE00210_1DA Precinct 1 111208.rvt	JOB No.	DEI00210
			DATE	Oct 2010
			SCALE	A1 @ As indicated
			DWG No.	1DA300 C