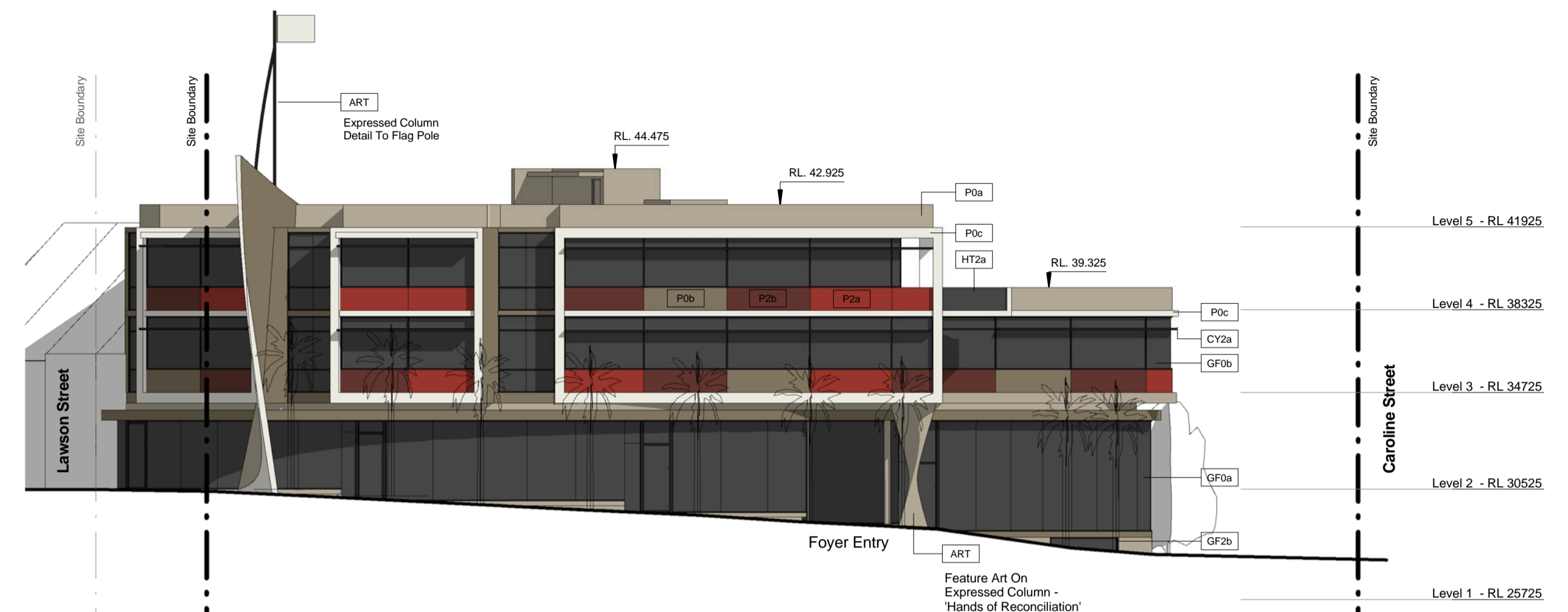
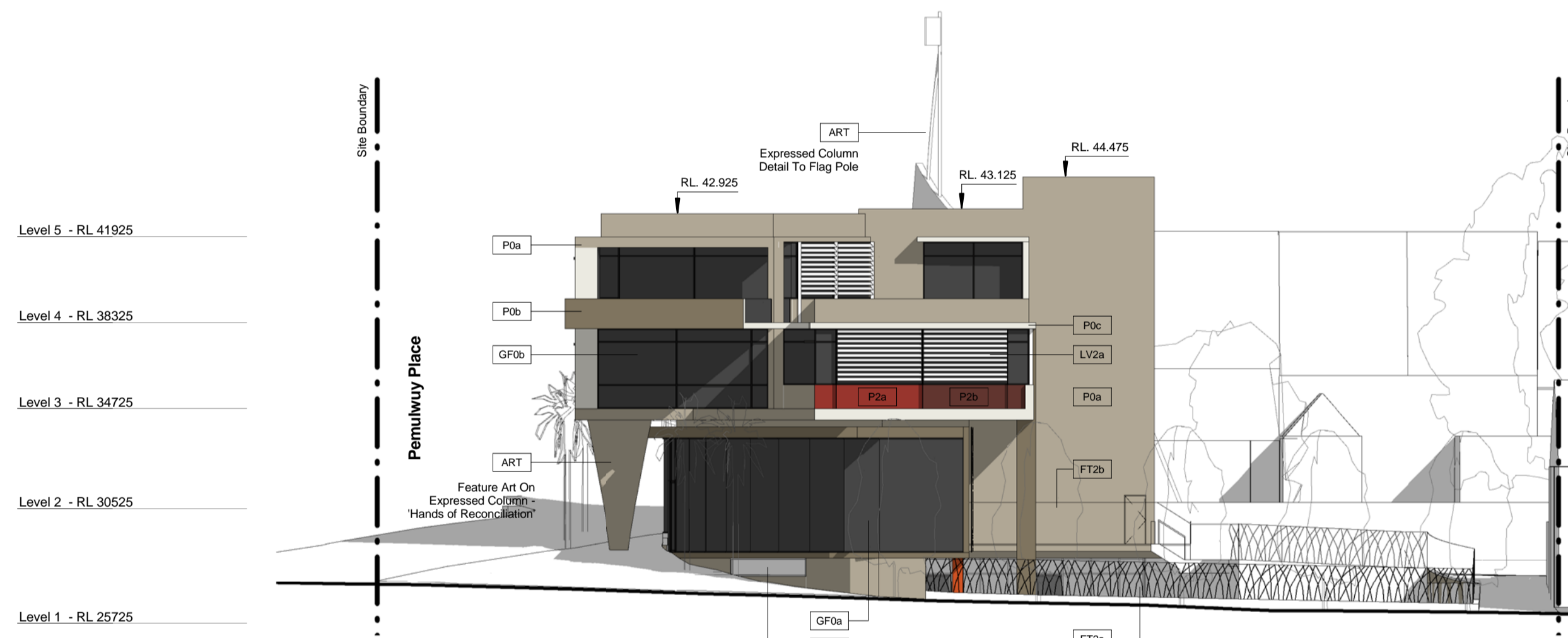


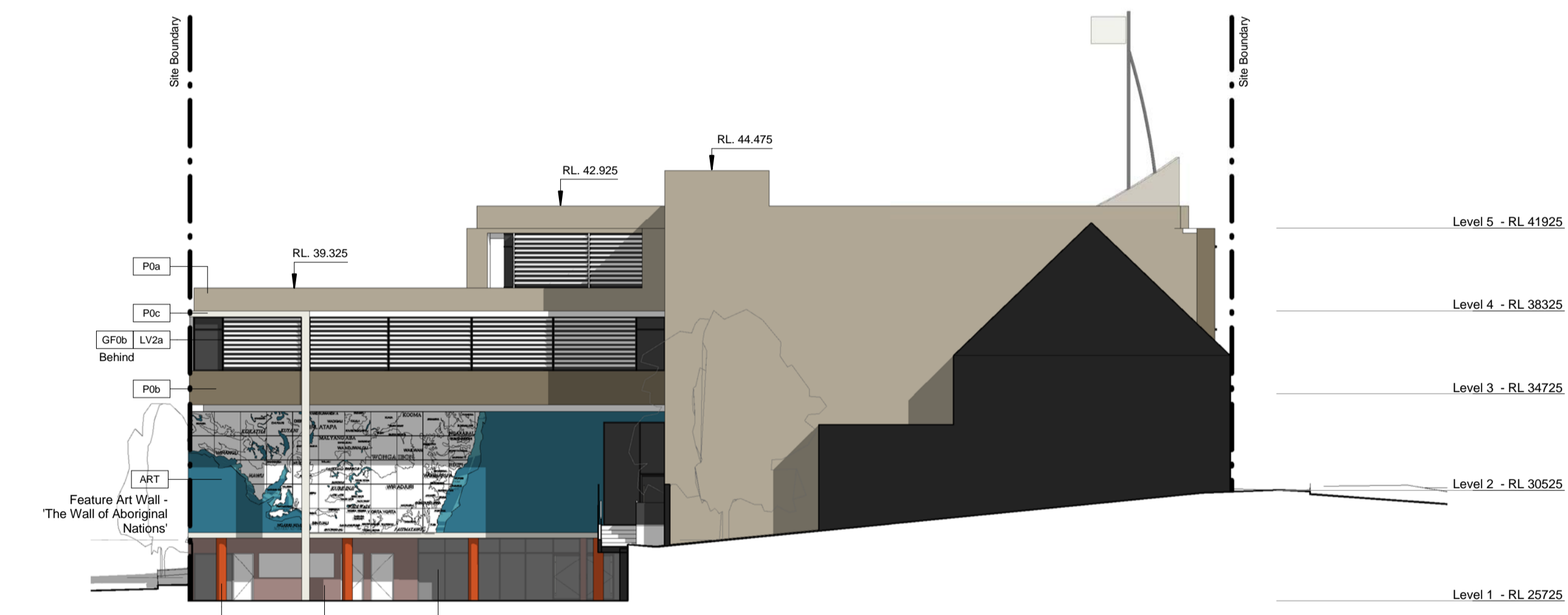
**1 Lawson Street**  
1:200



**2 Pemulwuy Place**  
1:200



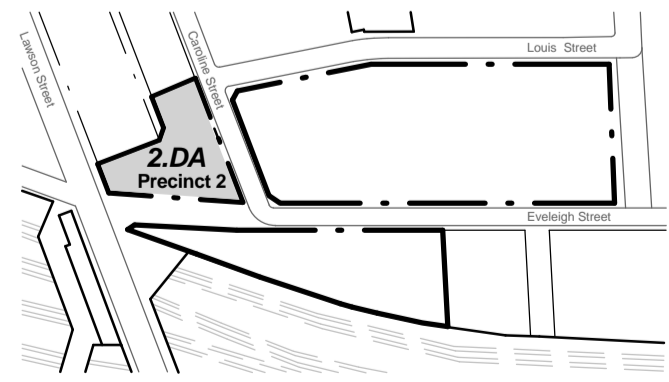
**3 Caroline Street**  
1:200



**4 Caroline Lane**  
1:200

**Abbreviation / Finishes Schedule**

ART	Community Art Work Elements
CY2a	Prefinished Aluminium Grille Sun Shading Canopy To Commercial Units
FT2a	Prefinished Vertical Baluster Fence Enclosure With Colour Variations On Low Conc Retaining Wall With Proprietary Double Gate To Childcare Open Space
FT2b	1500mm High Grade 'K' Safety Glass Panel Fence With Graded Frit Pattern Fixed With Patch Prefinished To Prefinished Steel Baluster Posts
GF0a	Framed Curtain Wall System With Proprietary Door and Window Opening Systems With Black Powdercoat Finish (Retail - Precincts P1 / P2)
GF0b	Framed Curtain Wall System With Proprietary Door and Window Opening Systems With Black Powdercoat Finish (Commercial - Precincts P2 / P3)
GF2a	Prefinished Metal Framed Curtain Wall System With Black Powdercoat Finish To Childcare Area
GF2b	Prefinished Metal Framed Window Systems To Childcare Areas With Black Powdercoat Finish
HT2a	Prefinished Steel Framed Balustrades with Extruded Aluminium Handrail and Glazed Baluster Panels With Frit Pattern To Commercial Balconies
LV2a	Prefinished Aluminium Fixed Horizontal Slim Line Elliptical Louvres To West and North Facing Commercial Levels
P0a	Base Building Colour To Match - Dulux / Linseed / P15.B3
P0b	Secondary Feature 'Face' Colour To Match - Dulux / Swampy / P15.B6
P0c	Slab Edge and Blade 'Cur' Colour To Match - Dulux / Whisper White / PC01F574191
P1a	Feature #1 Colour To Match - Dulux / Play School / P09.H9
P2a	Feature #1 Colour To Match - Dulux / Red Stop / P05.G9
P2b	Feature #2 Colour To Match - Dulux / Rusted Crimson / P05.E9



**General Notes:**

Architectural Drawings To Be Read In Conjunction With All Other Consultants Detailed Drawings, Reports And Specifications.

All Levels Indicated Taken To Australian Height Datum (AHD)

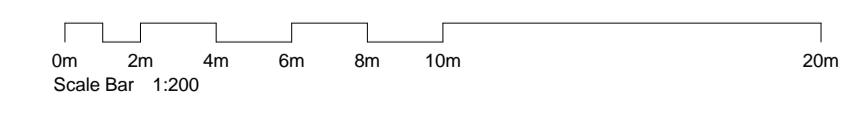
Refer To ODA900 For Abbreviation Schedule And Proposed Outline Colour Selections And Finishes Selections.

Site Underlay Based On Survey Carried Out By Denny Linker For Previous Application and Subsequent Survey Work Carried Out By Daw & Walton Consulting Surveyors - Refer To Drawing 302805.



CNR PARRAMATTA RD & JOHNSTON ST - PO BOX 254 - ANNANDALI - NSW 2038 - T.02 9517 2822 F.02 9517 2833  
STEPHEN J. NORDON REGISTRATION No. NSW - 4704 GRAHAM P. JAGO REGISTRATION No. NSW - 4926

Rev	Description	Date
A	Preliminary DA Issue For Review	11.07.11
B	Preliminary DA Issue For Review	20.07.11
C	Development Application Issue	14.12.11



**Precinct 2 - Pemulwuy Mixed Use Development, REDFERN**

J:\DE00210 Pemulwuy Project\4 NJA Documentation\6 CAD\3 DA\01 Model\01 Current\DE00210\_2DA Precinct 2\_111125.rvt

JOB No.	DE100210
DATE	June 2010
SCALE	A1 @ As indicated
DWG No.	2DA300 C

**Elevations**