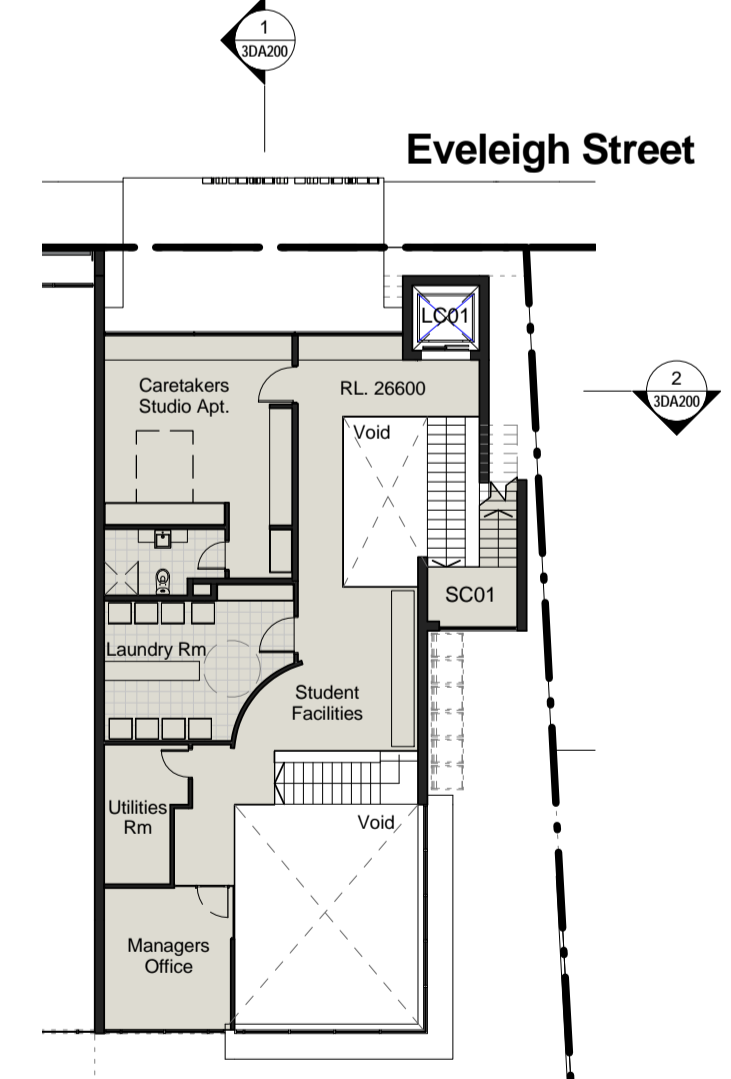
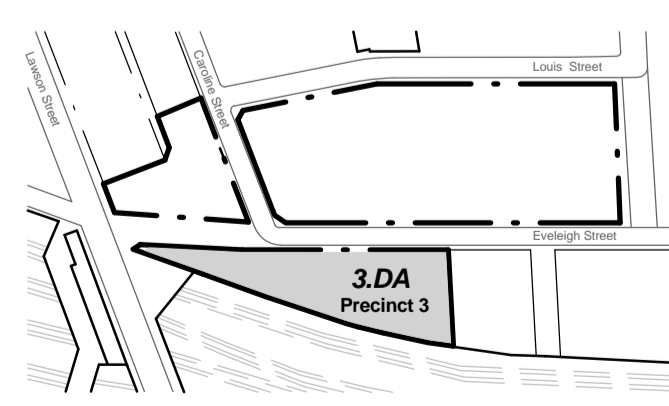


1 Lower Ground Floor
1 : 200



2 Ground Floor Mezzanine
1 : 200

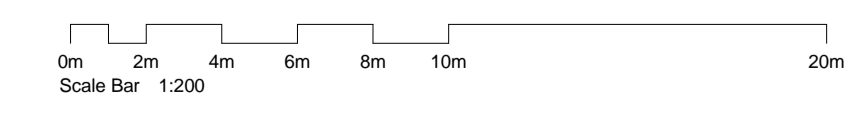
General Notes:
 Architectural Drawings To Be Read In Conjunction With All Other Consultants Detailed Drawings, Reports And Specifications.
 All Levels Indicated Taken To Australian Height Datum (AHD)
 Refer To ODA900 For Abbreviation Schedule And Proposed Outline Colour Selections And Finishes Selections.
 Site Underlay Based On Survey Carried Out By Denny Linker For Previous Application and Subsequent Survey Work Carried Out By Daw & Walton Consulting Surveyors - Refer To Drawing 302808.



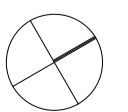
Development Application		
Rev	Description	Date
A	Current Development Summary Issue	10.06.11
B	Preliminary DA Issue For Review	11.07.11
C	Preliminary DA Issue For Review	20.07.11
D	Development Application Issue	14.12.11



CNR PARRAMATTA RD & JOHNSTON ST - PO BOX 254 - ANNANDALI - NSW 2038 - T.02 9517 2822 F.02 9517 2833
 STEPHEN J. NORDON REGISTRATION No. NSW - 4704 GRAHAM P. JAGO REGISTRATION No. NSW - 4926



TITLE



Precinct 3 - Pemulwuy Mixed Use Development, REDFERN

Lower Ground & Ground Floor Plan

JOB No.	DEI00210
DATE	October 2010
SCALE	A1 @ As indicated
DWG No.	3DA100 D

J:\DEI0210 Pemulwuy Project\4 NJA Documentation\6 CAD\3 DA\01 Model\01 Current\DEI00210_3DA Precinct 3_111129.rvt