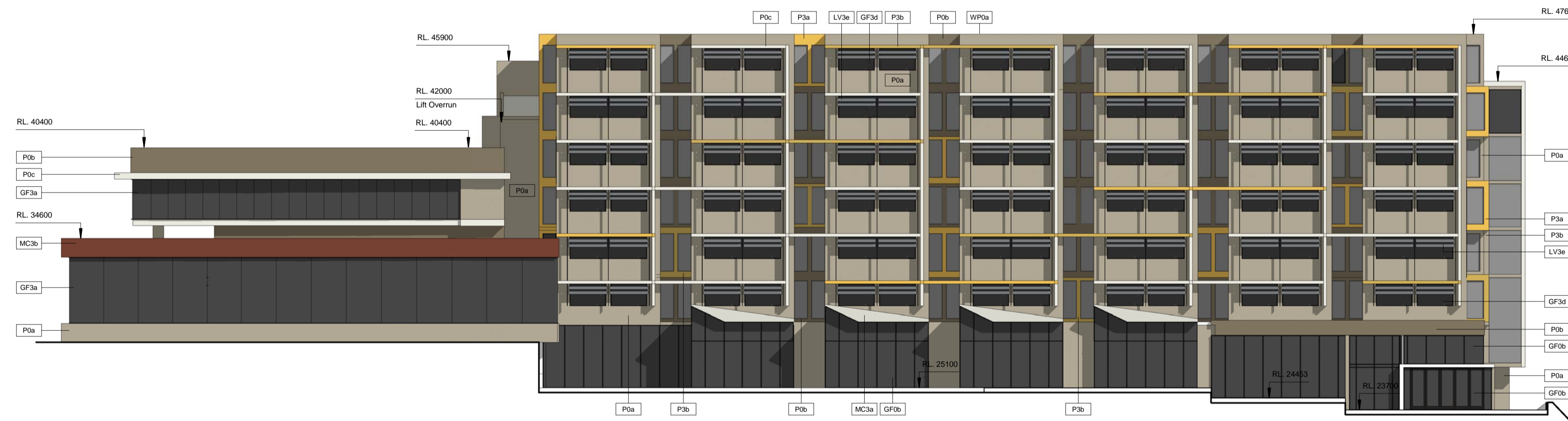


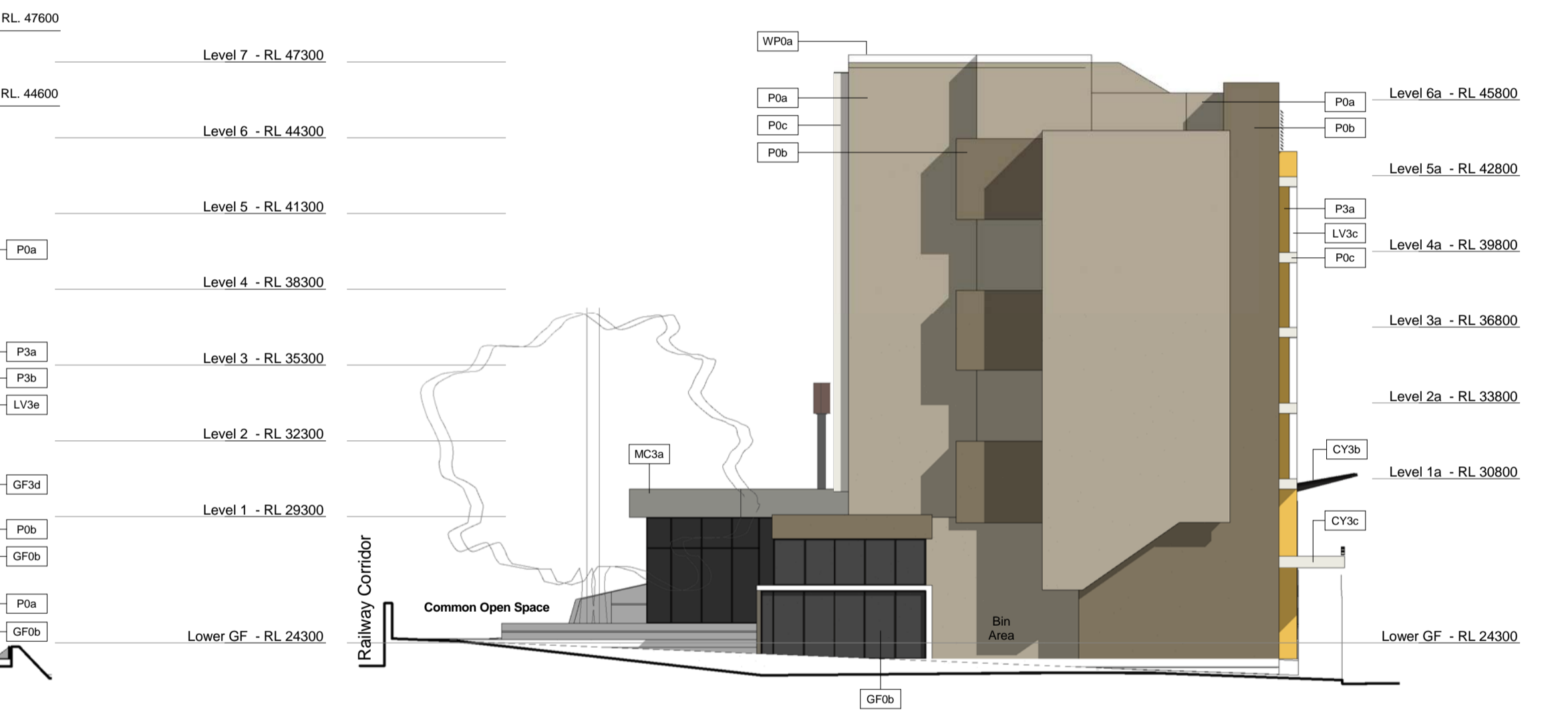
1.0 Eveleigh Street Elevation
1 : 200



1.1 Pemulwuy Place Elevation
1 : 200



1.2 Railway Corridor Elevation
1 : 200



1.3 North Elevation
1 : 200

Abbreviations / Finishes Schedule

ART	Community Art Work Elements	LV3d	Prefinished Adjustable Horizontal Elliptical Louvers To West Facing Student Housing Units Along Eveleigh Street - Powdercoat Finish Colour To Match Dulux 'Silver Grey Matt'
CY	Canopy Types	LV3e	Prefinished Horizontal Elliptical Louvers To East Facing Student Housing Units Along Railway Corridor - Powdercoat Finish Colour To Match Dulux 'Luna Eclipse 9774 Satin'
CY3a	Framed Canopy With Prefinished Profiled Metal Cladding To Eveleigh Street Commercial / Gallery Lobby Entry	MC	External Cladding And Roof Lining Types
CY3b	Grade 'A' Safety Glass Panel Canopy With Frit Pattern On Prefinished Steel Outriggers Over Commercial Entries To Eveleigh St	MC3a	Prefinished Lysaght Kiplok 700 Roofing Sheets (OEA) - Finished In Colourbond 'Surfmat' With Box Gutter Finish To Match To Commercial Roofs
CY3c	Framed Canopy With Prefinished Profiled Metal Cladding To Eveleigh Street Student Housing Entry	MC3b	Corten Steel Cladding Fixed On Proprietary Steel Frame System To Art Gallery Facade
FE	Fire Exit - Point Of Discharge To Open Space	NAU	Nominated Adaptable Unit To Comply With AS 4299
FT	Fence / Screen Types	P	Applied Coatings (Refer Also to Drawing ODA900)
FT3a	1800mm High Privacy Screens Between Commercial / Student Housing Common Open Areas	P0a	Base Building Colour To Match - Dulux / Linseed / P15.B3
GF	Glass Framing Systems (All Frames To Comply With AS2047)	P0b	Secondary Feature 'Face' Colour To Match - Dulux / Swampy / P15.B6
GF0b	Framed Curtain Wall System With Proprietary Door and Window Opening Systems With Black Powdercoat Finish (Commercial - Precincts P2 / P3)	P0c	Slab Edge and Blade 'Cut' Colour To Match - Dulux / Whisper White / PCWF674161
GF3a	Frameless Glazing Curtain Wall System To Main Gallery Facade	P3a	Feature #1 Colour To Match - Dulux / Corn Bread / P14.H6
GF3b	Frameless Glazing Curtain Wall System To Secondary Elevation Of Commercial Entries Along Eveleigh Street	P3b	Feature #2 Colour To Match - Dulux / Warm Wollen / P16.F6
GF3c	Prefinished Metal Framed Windows Student Housing With Black Powdercoat Finish	TS	Tile And Paver Types (Slip Resistance Grade Of Tiles To Be Selected To Relevant To Use And Exposure)
GF3d	Prefinished Metal Framed Awning Windows Student Housing Facing Rail Corridor With Black Powdercoat Finish	TS0a	Refer To Landscape Architects Details For Finishes To Public Domain Areas
GF3e	Prefinished Metal Framed Sliding Door Sets To Student Housing With Black Powdercoat Finish	TS2d	300x300mm Tiles Laid To Falls In Retail / Commercial W/c's
GL	Glazing Types (To Comply With AS1288)	TS3d	300x300mm Tiles Laid To Falls In Shared Laundry and W/c's of Student Housing Common Area
HT	Handrail/Balustrade Types (All Glazing Components To AS1288)	TS3e	300x600mm Direct Stick Floor Tiles To Kitchens In Student Housing Units
LV	Louvre Types	TS3f	300x300mm Tiles Laid To Falls In Bath Rooms To Student Housing Units
LV3a	Prefinished Fixed Perforated Louvre Panels Full Height To Ground Floor Gallery Elevation - Powdercoat Finish Colour To Match P3a	WP	Waterproofing Systems
LV3b	Prefinished Fixed Perforated Louvre Panels Full Height To Level 1 Gallery Elevation Finished As Clear Anodised	WP0a	Sheet Membrane To Flat Roof Areas (Generally Screed/Membrane/Insulation/Ballast)
LV3c	Prefinished Adjustable Horizontal Elliptical Louvers To West Facing Student Housing Units Along Eveleigh Street - Powdercoat Finish Colour To Match Dulux 'Grey Satin'		

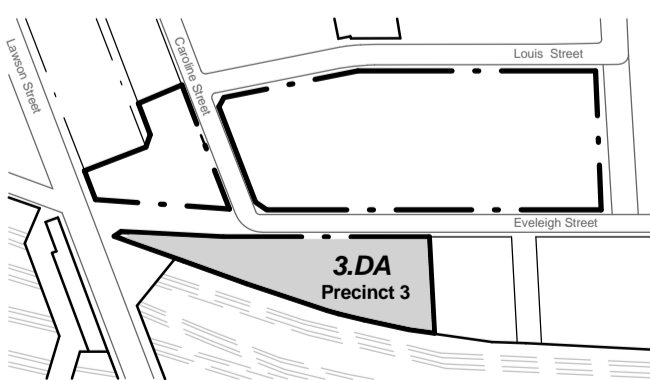
General Notes:

Architectural Drawings To Be Read In Conjunction With All Other Consultants Detailed Drawings, Reports And Specifications.

All Levels Indicated Taken To Australian Height Datum (AHD)

Refer To ODA900 For Abbreviation Schedule And Proposed Outline Colour Selections And Finishes Selectors.

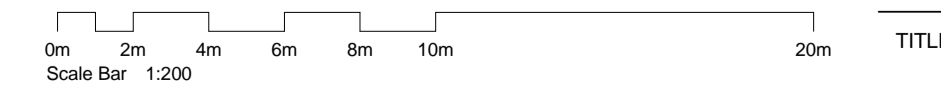
Site Underlay Based On Survey Carried Out By Denny Linker For Previous Application and Subsequent Survey Work Carried Out By Daw & Walton Consulting Surveyors - Refer To Drawing 302808.



Rev	Description	Date
A	Preliminary DA Issue For Review	11.07.11
B	Preliminary DA Issue For Review	20.07.11
C	Development Application Issue	14.12.11



CNR PARRAMATTA RD & JOHNSTON ST - PO BOX 254 - ANNANDALI - NSW 2038 - T.02 9517 2822 F.02 9517 2833
STEPHEN J. NORDON REGISTRATION No. NSW - 4704 GRAHAM P. JAGO REGISTRATION No. NSW - 4926



Precinct 3 - Pemulwuy Mixed Use Development, REDFERN

J:\DEI0210 Pemulwuy Project\4 NJA Documentation\6 CAD\3 DA\01 Model\01 Current\DEI0210_3DA Precinct 3_111129.rvt

JOB No.	DEI00210
DATE	October 2010
SCALE	A1 @ As indicated
DWG No.	3DA300 C

Elevations