



PROPOSED BUILDINGS TO CONNECT TO EXISTING CAMPUS WATER RETICULATION NETWORK. CONNECTION POINTS TO BE LOCATED AS PART OF FUTURE DESIGN

PROPOSED BUILDINGS TO CONNECT TO EXISTING CAMPUS WATER RETICULATION NETWORK. CONNECTION POINTS TO BE LOCATED AS PART OF FUTURE DESIGN

EXISTING CAMPUS HYDRANT BOOSTER PUMP

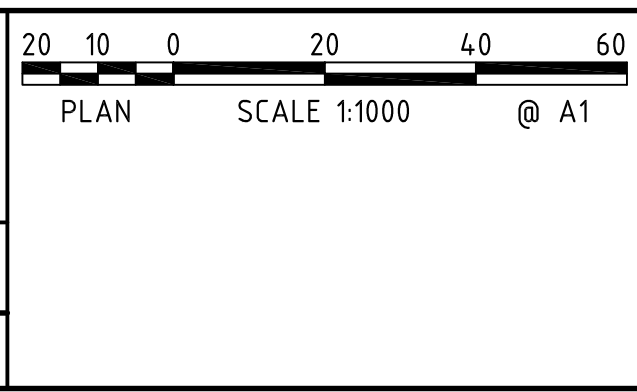
PRELIMINARY - NOT FOR CONSTRUCTION


Rev	Amendment / Reason For Issue	Date	Drawing Completed by	Designed & Checked by	Verified by X = Not verified	Issue Authorised (+)
4	FINAL - ISSUED FOR ENVIRONMENTAL ASSESSMENT	14.12.11	BY	CB	X	PMcB
3	FINAL - ISSUED FOR ENVIRONMENTAL ASSESSMENT	06.09.11	BY	CB	X	PMcB
2	FINAL - ISSUED FOR ENVIRONMENTAL ASSESSMENT	05.08.11	BY	CB	X	PMcB
1	DRAFT - ISSUED FOR INFORMATION	08.07.11	BY	CB	X	CB

Copyright
This drawing remains the property of Hughes Trueman Pty. Ltd.
It may only be used for the purpose for which it was commissioned &
in accordance with the terms of engagement for that commission.
Hughes Trueman denies any liability or responsibility for loss or
damage caused by the inappropriate use of this drawing.

* Drawing Status Warning: Unless there is an authorised Hughes
Trueman signature at *, this drawing is not authorised for issue.

This Drawing may have been prepared using **COLOUR**,
and may be incomplete if copied to **BLACK & WHITE**




Mott MacDonald
Hughes Trueman
ABN 53 831 529 091
Level 2, 60 Pacific Hwy, PO Box 151, ST LEONARDS NSW 2065
T +61 2 9439 2633 F +61 2 9438 4505 s@leonnards@hughestrueman.com.au

Project
**ACU STRATHFIELD
INFRASTRUCTURE
ASSESSMENT**

Client
ACU
Architect/Project Manager
HASSELL

Drawing Title		Drawing No.		Sheet	Rev
PROPOSED WATER SERVICING STRATEGY PLAN		294464C-MP08		08 of 10	04

300mm A1 SHEET

200mm


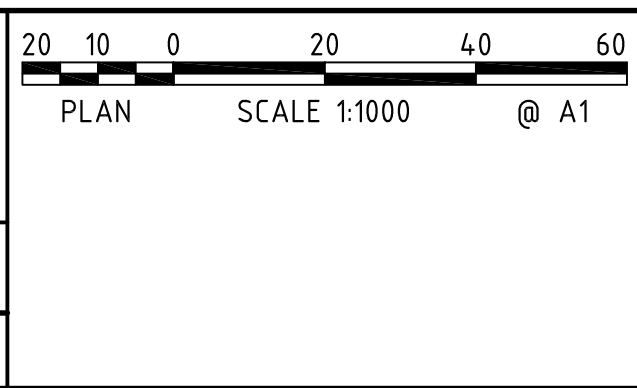
100mm

Rev	Amendment / Reason For Issue	Date	Drawing Completed by	Designed & Checked by	Verified by X = Not verified	Issue Authorised (+)
4	FINAL - ISSUED FOR ENVIRONMENTAL ASSESSMENT	14.12.11	BY	CB	X	PMcB
3	FINAL - ISSUED FOR ENVIRONMENTAL ASSESSMENT	06.09.11	BY	CB	X	PMcB
2	FINAL - ISSUED FOR ENVIRONMENTAL ASSESSMENT	05.08.11	BY	CB	X	PMcB
1	DRAFT - ISSUED FOR INFORMATION	08.07.11	BY	CB	X	CB

Copyright
This drawing remains the property of Hughes Trueman Pty. Ltd.
It may only be used for the purpose for which it was commissioned &
in accordance with the terms of engagement for that commission.
Hughes Trueman denies any liability or responsibility for loss or
damage caused by the inappropriate use of this drawing.

* Drawing Status Warning: Unless there is an authorised Hughes
Trueman signature at *, this drawing is not authorised for issue.

This Drawing may have been prepared using **COLOUR**,
and may be incomplete if copied to **BLACK & WHITE**



Mott MacDonald
Hughes Trueman

ABN 53 831 529 091
Level 2, 60 Pacific Hwy, PO Box 151, ST LEONARDS NSW 2065
T +61 2 9439 2633 F +61 2 9438 4505 sflemmings@hughestrueman.com.au

Project
**ACU STRATHFIELD
INFRASTRUCTURE
ASSESSMENT**

Client
ACU
Architect/Project Manager
HASSELL

Drawing Title
**PROPOSED SEWER SERVICING
STRATEGY PLAN**

Drawing No.
294464C-MP09

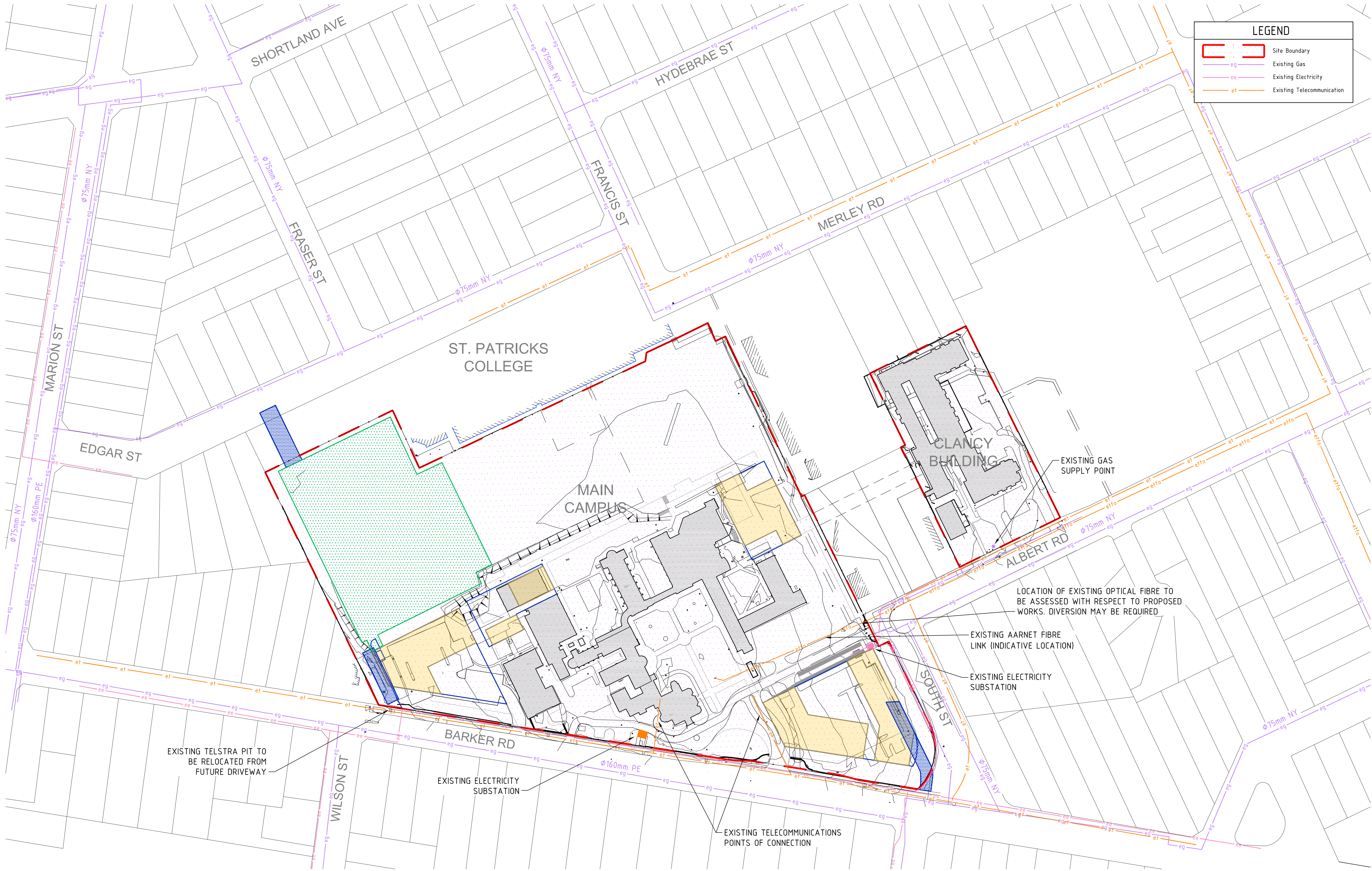
Sheet
09
of
10

Rev
04

300mm A1 SHEET

200mm

100mm



LEGEND

Site Boundary

eg

Existing Gas

ee

Existing Electricity

et

Existing Telecommunication

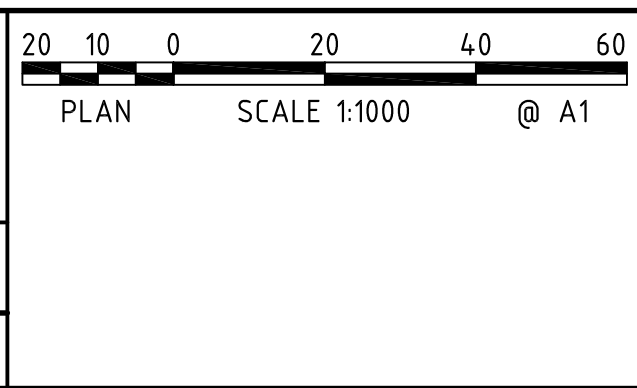
PRELIMINARY - NOT FOR CONSTRUCTION

Rev	Amendment / Reason For Issue	Date	Drawing Completed by	Designed & Checked by	Verified by X = Not verified	Issue Authorised (+)
4	FINAL - ISSUED FOR ENVIRONMENTAL ASSESSMENT	14.12.11	BY	CB	X	PMcB
3	FINAL - ISSUED FOR ENVIRONMENTAL ASSESSMENT	06.09.11	BY	CB	X	PMcB
2	FINAL - ISSUED FOR ENVIRONMENTAL ASSESSMENT	05.08.11	BY	CB	X	PMcB
1	DRAFT - ISSUED FOR INFORMATION	08.07.11	BY	CB	X	CB

Copyright
This drawing remains the property of Hughes Trueman Pty. Ltd.
It may only be used for the purpose for which it was commissioned &
in accordance with the terms of engagement for that commission.
Hughes Trueman denies any liability or responsibility for loss or
damage caused by the inappropriate use of this drawing.

* Drawing Status Warning: Unless there is an authorised Hughes
Trueman signature at *, this drawing is not authorised for issue.

This Drawing may have been prepared using **COLOUR**,
and may be incomplete if copied to **BLACK & WHITE**



Mott MacDonald

Hughes Trueman

ABN 53 831 529 091
Level 2, 60 Pacific Hwy, PO Box 151, ST LEONARDS NSW 2065
T +61 2 9439 2633 F +61 2 9438 4505 stleonards@hughestrueman.com.au

Project	ACU STRATHFIELD INFRASTRUCTURE ASSESSMENT
Client	ACU
Architect/Project Manager	HASSELL

Drawing Title	PROPOSED ELECTRICAL, TELECOMMUNICATION AND GAS SERVICING STRATEGY
Drawing No.	294464C-MP10
Sheet	10 of 10
Rev	04

Filename: P:\ST Leonards\Projects\294464C\Working Files\Civil\Auracast\Drawings\294464C-Proposed Elec Tele Gas Servicing Strategy Planning
Plotted By: jps30253 Time: 9:52am Date: 12-12-11