

SHEPHERDS BAY URBAN RENEWAL

36. VEHICULAR ACCESS AND STREETS

LEGEND:

- Vehicular Access
- Internal road and destinations
- Foreshore pedestrian access
- Ferry access
- Railway line
- Bus stop

The existing grid-style road typology has been adopted with additional connections proposed in compliance with Council's DCP. This will facilitate better connections, greater legibility and improved access for vehicles, pedestrians and cyclists.

Street designs are to generally comply with Section 5 (Meadowbank) of Council's Public Domain Technical Manual.

36.1 Existing Streets to be Upgraded

The urban renewal project will involve upgrading landscaping of the streets to improve the attractiveness and usability of the public domain and strengthen linkages. Improved streets will be an important element in the creation of character and sense of place for the new residential neighbourhood.

36.2 New Roadways or Realignments Proposed

The proposed upgrading and extension of Nancarrow Avenue to Belmore Street will be integrated with the streetscape upgrades of the adjoining roads within the site. The new roadway will provide significant benefits including strengthening east-west connections and improving access, circulation, legibility and safety.

36.3 Provision of Street Lighting

Street lighting will be provided to streets, pathways, cycleways, public open spaces and communal areas in accordance with Council's Public Technical Domain Manual (Section 5 - Meadowbank).

Refer to road designs at **Annexure 2** and Landscape Plan at **Annexure 13**.

Recommended Development Principle

Streets and accessways in the Concept Plan site are to be provided generally in accordance with the Access Plan at **Figure 45**.

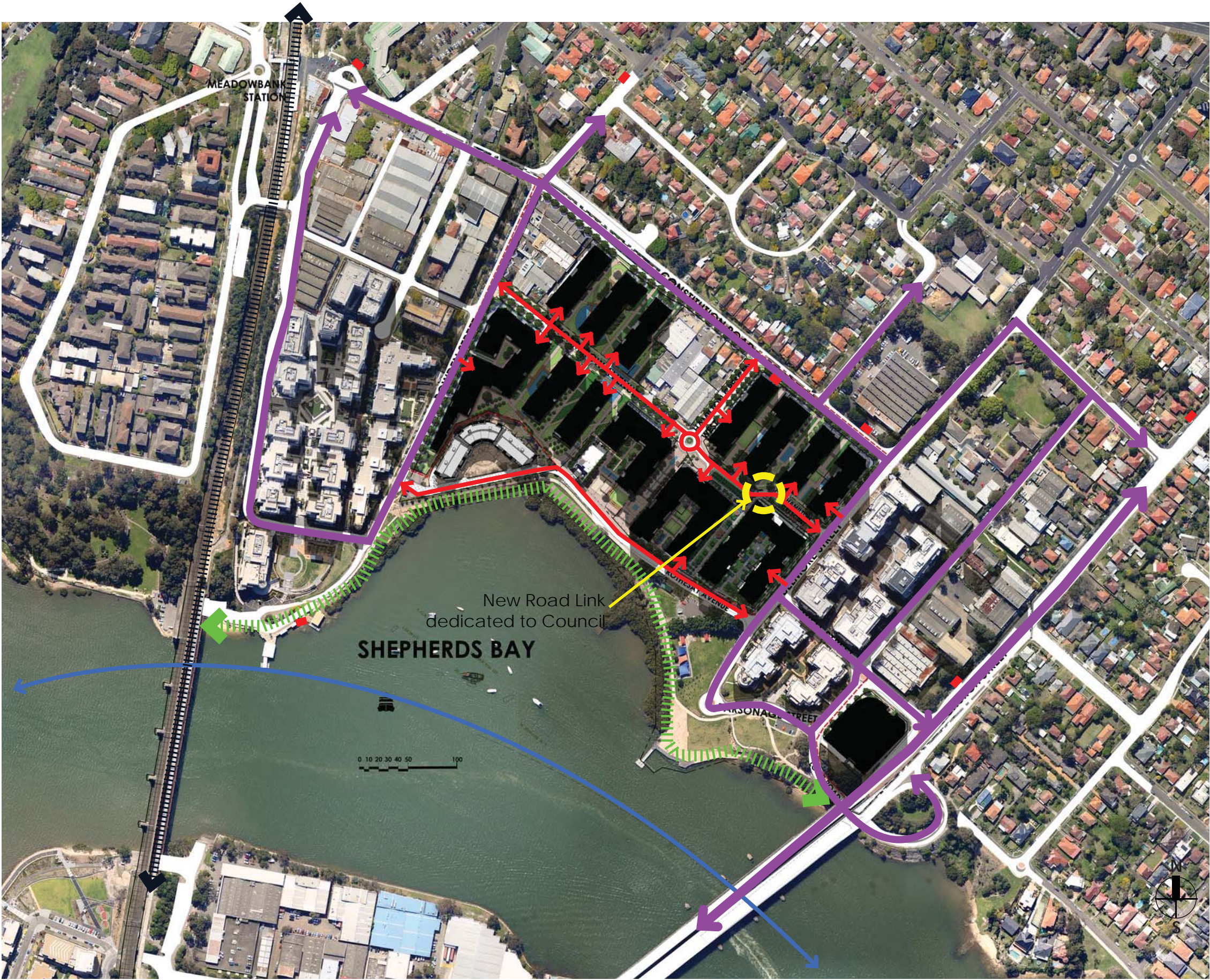


FIGURE 45. VEHICULAR ACCESS AND PUBLIC TRANSPORT PLAN