

SHEPHERDS BAY URBAN RENEWAL - BUILDING TYPOLOGIES:

SITES WITH SLOPE > 1:12

LEGEND:

1 BED APT

2 BED + STUDY APT

2 BED CORNER APT

2 BED CROSS THROUGH APT

3 BED APT

3 BED + STUDY APT

SITES WITH SLOPE > 1:12

SITES WITH SLOPE < 1:12

UNIT TYPES AS NUMBERED ON PAGES 5 & 6

1.

CROSS VENTILATED UNITS*

ENHANCED SINGLE SIDED VENTILATED UNITS*

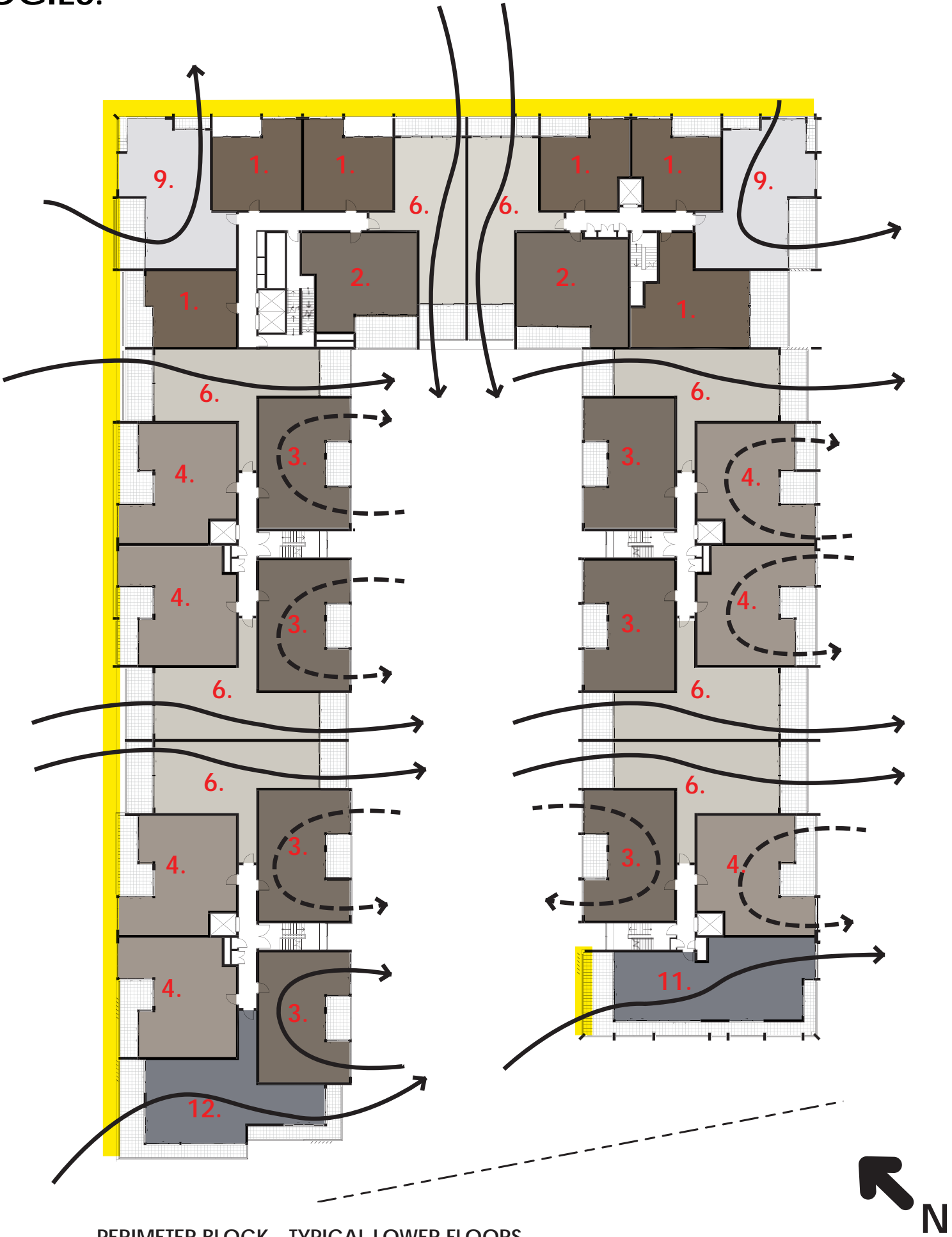
UNITS MEETING THE MINIMUM SOLAR ACCESS DURING WINTER SOLSTICE*

* Solar and ventilation impacts extrapolated from Solar Access and Natural Ventilation Analysis Report for Stage 1, dated: 8 December 2011.

Note: Subject to final review at DA stage.



KEY PLAN



PERIMETER BLOCK - TYPICAL LOWER FLOORS

SHEPHERDS BAY URBAN RENEWAL - BUILDING TYPOLOGIES:

SITES WITH SLOPE > 1:12

LEGEND:

1 BED APT

2 BED + STUDY APT

2 BED CORNER APT

2 BED CROSS THROUGH APT

3 BED APT

3 BED + STUDY APT

SITES WITH SLOPE > 1:12

SITES WITH SLOPE < 1:12

UNIT TYPES AS NUMBERED ON PAGES 5 & 6

1.

CROSS VENTILATED UNITS*

ENHANCED SINGLE SIDED VENTILATED UNITS*

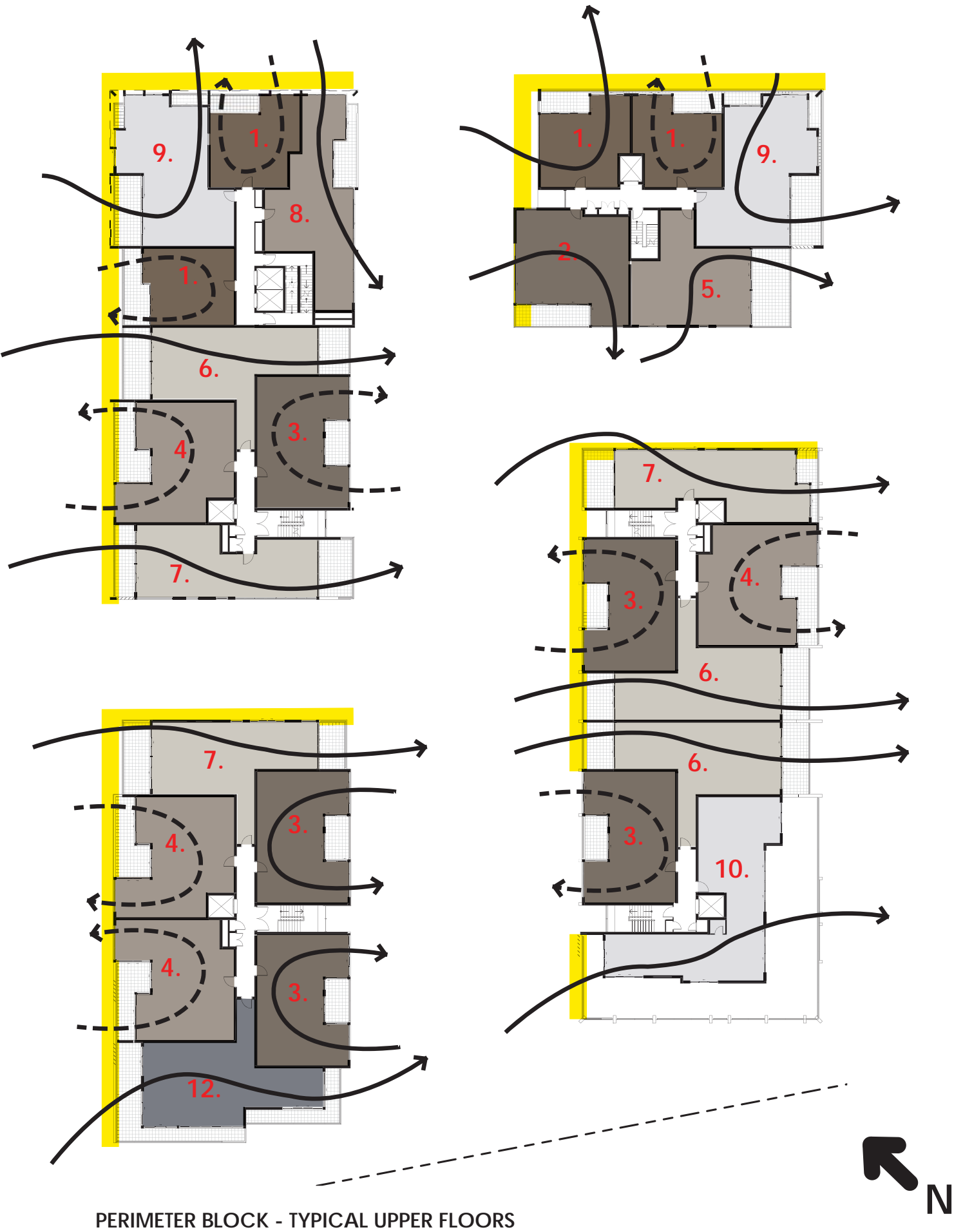
UNITS MEETING THE MINIMUM SOLAR ACCESS DURING WINTER SOLSTICE*

* Solar and ventilation impacts extrapolated from Solar Access and Natural Ventilation Analysis Report for Stage 1, dated: 8 December 2011.

Note: Subject to final review at DA stage.



KEY PLAN



SHEPHERDS BAY URBAN RENEWAL - BUILDING TYPOLOGIES:

SITES WITH SLOPE > 1:12

LEGEND:

1 BED APT

2 BED + STUDY APT

2 BED CORNER APT

2 BED CROSS THROUGH APT

3 BED APT

3 BED + STUDY APT

SITES WITH SLOPE > 1:12

SITES WITH SLOPE < 1:12

UNIT TYPES AS NUMBERED ON PAGES 5 & 6

1.

CROSS VENTILATED UNITS*

ENHANCED SINGLE SIDED VENTILATED UNITS*

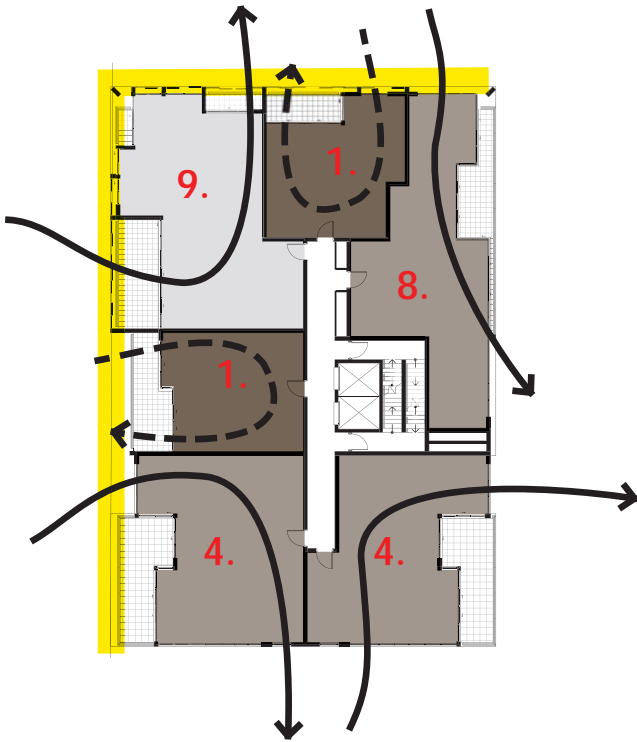
UNITS MEETING THE MINIMUM SOLAR ACCESS DURING WINTER SOLSTICE*

* Solar and ventilation impacts extrapolated from Solar Access and Natural Ventilation Analysis Report for Stage 1, dated: 8 December 2011.

Note: Subject to final review at DA stage.



KEY PLAN



TOWER ON PODIUM - TYPICAL FLOOR



SHEPHERDS BAY URBAN RENEWAL - BUILDING TYPOLOGIES:

SITES WITH SLOPE < 1:12

LEGEND:

- 1 BED APT
- 2 BED + STUDY APT
- 2 BED CORNER APT
- 2 BED CROSS THROUGH APT
- 3 BED APT
- 3 BED + STUDY APT
- SITES WITH SLOPE > 1:12
- SITES WITH SLOPE < 1:12

UNIT TYPES AS NUMBERED ON PAGES 5 & 6

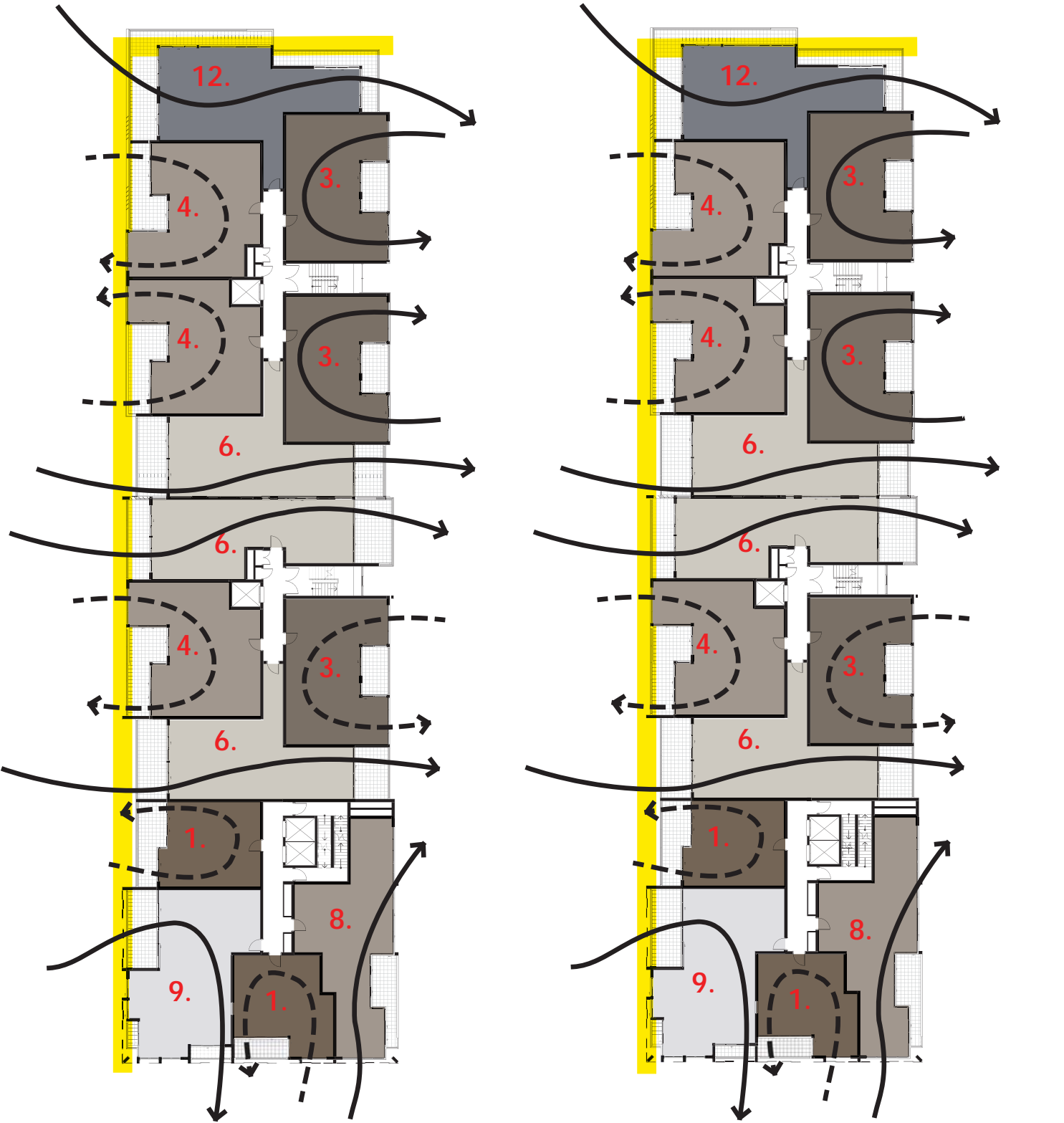
- CROSS VENTILATED UNITS*
- ENHANCED SINGLE SIDED VENTILATED UNITS*
- UNITS MEETING THE MINIMUM SOLAR ACCESS DURING WINTER SOLSTICE*

* Solar and ventilation impacts extrapolated from Solar Access and Natural Ventilation Analysis Report for Stage 1, dated: 8 December 2011.

Note: Subject to final review at DA stage.



KEY PLAN

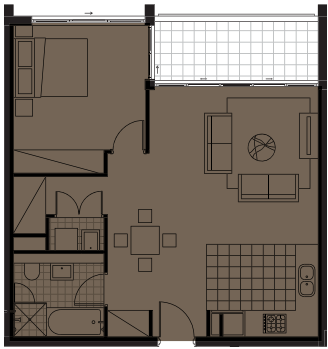


PERIMETER BLOCK - TYPICAL FLOORS



SHEPHERDS BAY URBAN RENEWAL - BUILDING TYPOLOGIES:

1.



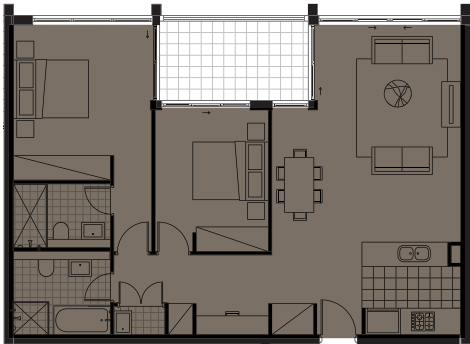
1 BED APT

2.



2 BED APT

3.



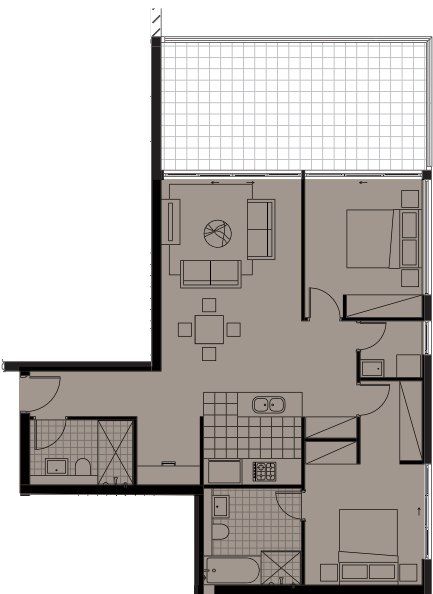
2 BED APT

4.



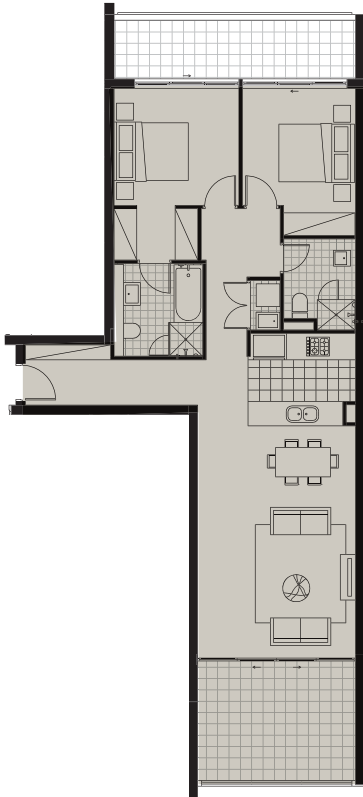
2 BED + STUDY/CORNER APT

5.



2 BED + STUDY/CORNER APT

6.



2 BED CROSS THROUGH APT

7.



2 BED CROSS THROUGH
CORNER APT

LEGEND:

- 1 BED APT
- 2 BED + STUDY APT
- 2 BED CORNER APT
- 2 BED CROSS THROUGH APT
- 3 BED APT
- 3 BED + STUDY APT



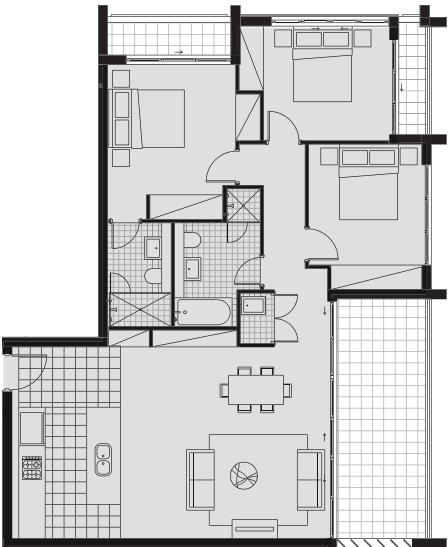
SHEPHERDS BAY URBAN RENEWAL - BUILDING TYPOLOGIES:

8.



2 BED CORNER APT

9.



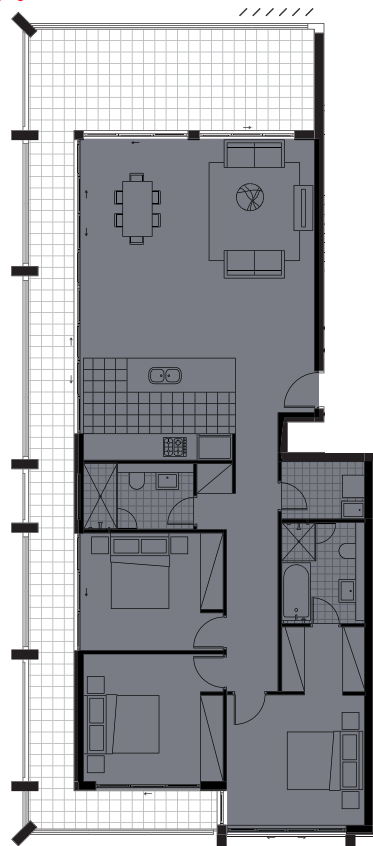
3 BED APT

10.



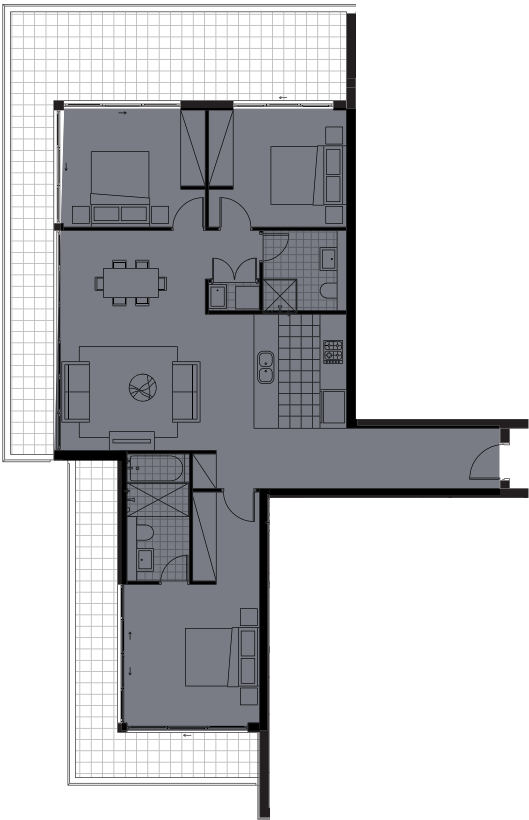
3 BED APT

11.



3 BED APT

12.



3 BED APT

LEGEND:

- 1 BED APT
- 2 BED + STUDY APT
- 2 BED CORNER APT
- 2 BED CROSS THROUGH APT
- 3 BED APT
- 3 BED + STUDY APT