

# SHEPHERDS BAY URBAN RENEWAL

## 37. SIGNIFICANT VIEWS

LEGEND:

- Existing view corridors
- Potential vista
- Neighbours views
- DCP - Panoramic views
- DCP - Vista
- DCP - Partially obscured vista
- DCP - Vista to Olympic Park

The sloping land form affords excellent views of Shepherds Bay and beyond to properties in the area. It is important that appropriate view sharing is maintained in the redevelopment of the subject lands.

The subject lands are highly visible from the Parramatta River and its foreshores, particularly from the eastern waterways and the Ryde Bridge beyond. It is also visible to some extent from the northern end of the Rhodes peninsula. Council's DCP identifies significant views to be retained in the redevelopment of the Concept Plan site. Currently a number of these views are blocked by existing industrial buildings.

One of the primary objectives of the Concept Plan is the protecting of existing and maximising additional views to Shepherds Bay and beyond from within the Concept Plan site and the surrounding area.

**Recommended Development principle**  
View corridors identified on Figure 46 Significant View Corridors are to be protected or created in any redevelopment within the Concept Plan site.

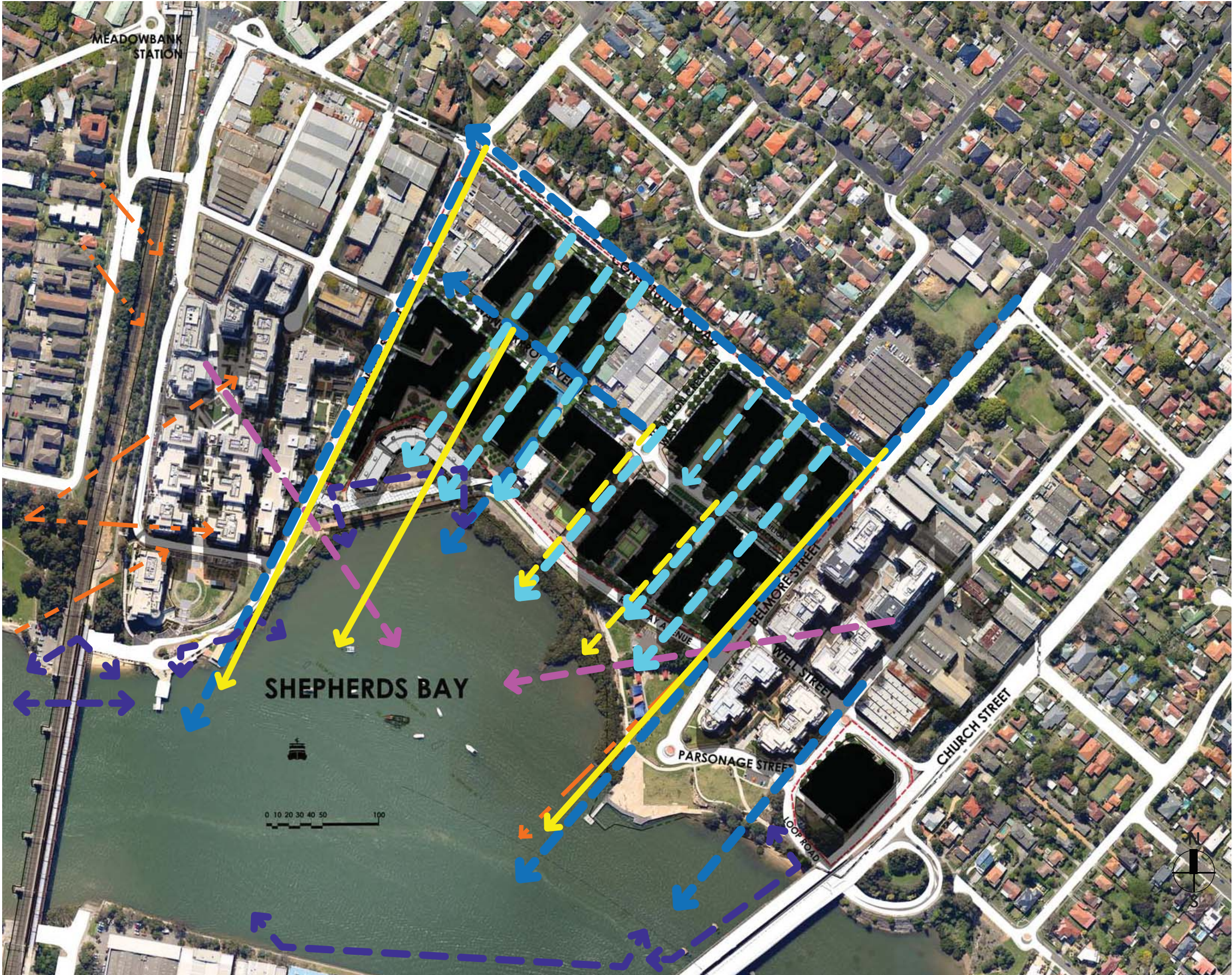


FIGURE 46. SIGNIFICANT VIEW CORRIDORS