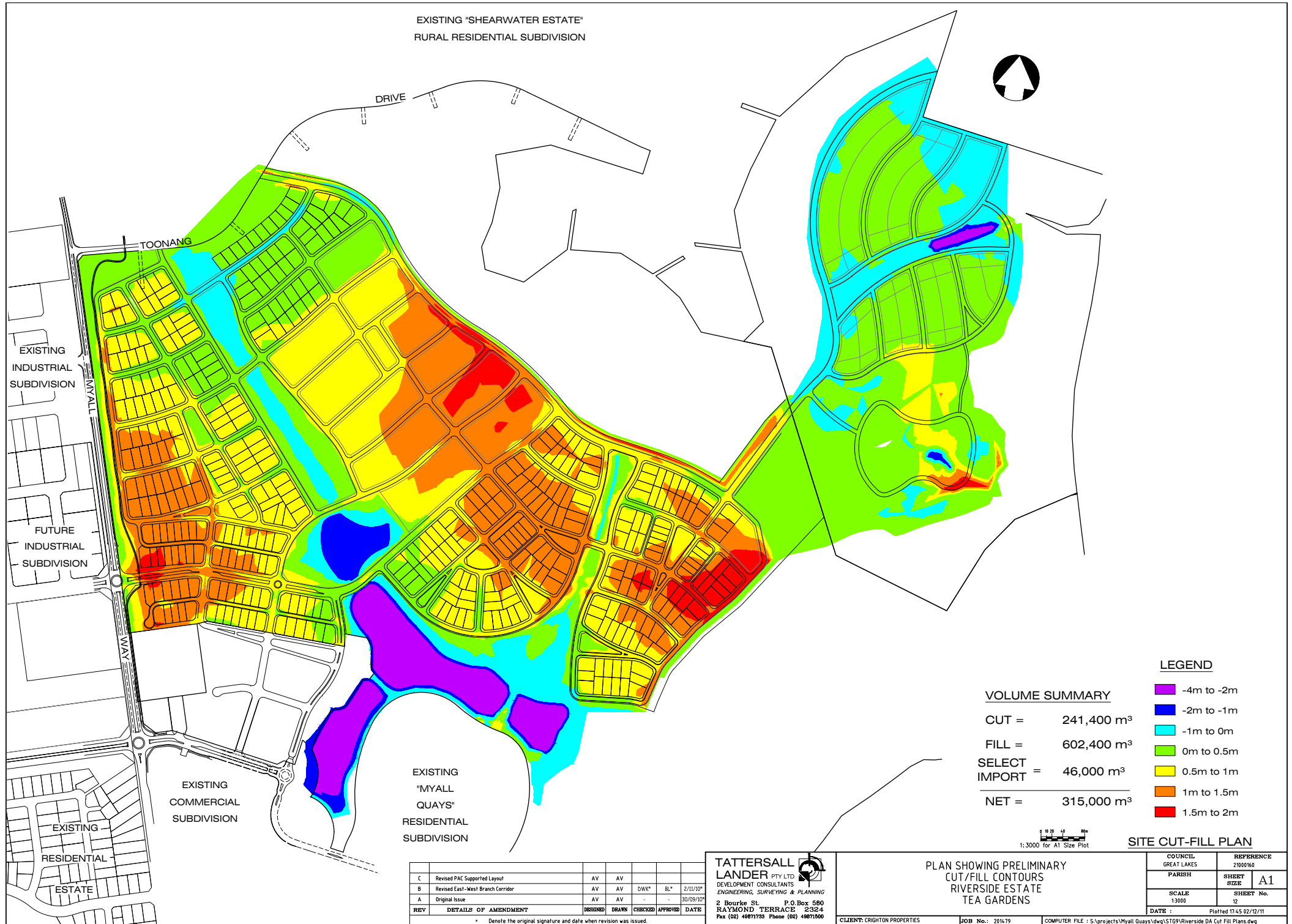


EXISTING "SHEARWATER ESTATE"  
RURAL RESIDENTIAL SUBDIVISION



**VOLUME SUMMARY**

CUT =	241,400 m <sup>3</sup>
FILL =	602,400 m <sup>3</sup>
SELECT IMPORT =	46,000 m <sup>3</sup>
<b>NET =</b>	<b>315,000 m<sup>3</sup></b>

**LEGEND**

	-4m to -2m
	-2m to -1m
	-1m to 0m
	0m to 0.5m
	0.5m to 1m
	1m to 1.5m
	1.5m to 2m

1:3000 for A1 Size Plot

**SITE CUT-FILL PLAN**

C	Revised PAC Supported Layout	AV	AV			
B	Revised East-West Branch Corridor	AV	AV	DWK*	BL*	2/11/10*
A	Original Issue	AV	AV	-	-	30/09/10*
REV	DETAILS OF AMENDMENT	DESIGNED	DRAWN	CHECKED	APPROVED	DATE

\* Denote the original signature and date when revision was issued.

**TATTERSALL LANDER** PTY LTD  
DEVELOPMENT CONSULTANTS  
ENGINEERING, SURVEYING & PLANNING  
2 Bourke St. P.O. Box 580  
RAYMOND TERRACE 2324  
Fax (02) 49871783 Phone (02) 49871500

PLAN SHOWING PRELIMINARY  
CUT/FILL CONTOURS  
RIVERSIDE ESTATE  
TEA GARDENS

COUNCIL GREAT LAKES	REFERENCE 21006160
PARISH	SHEET SIZE
SCALE 1:3000	SHEET No. 12
DATE : 17.45.02/12/11	Plotted