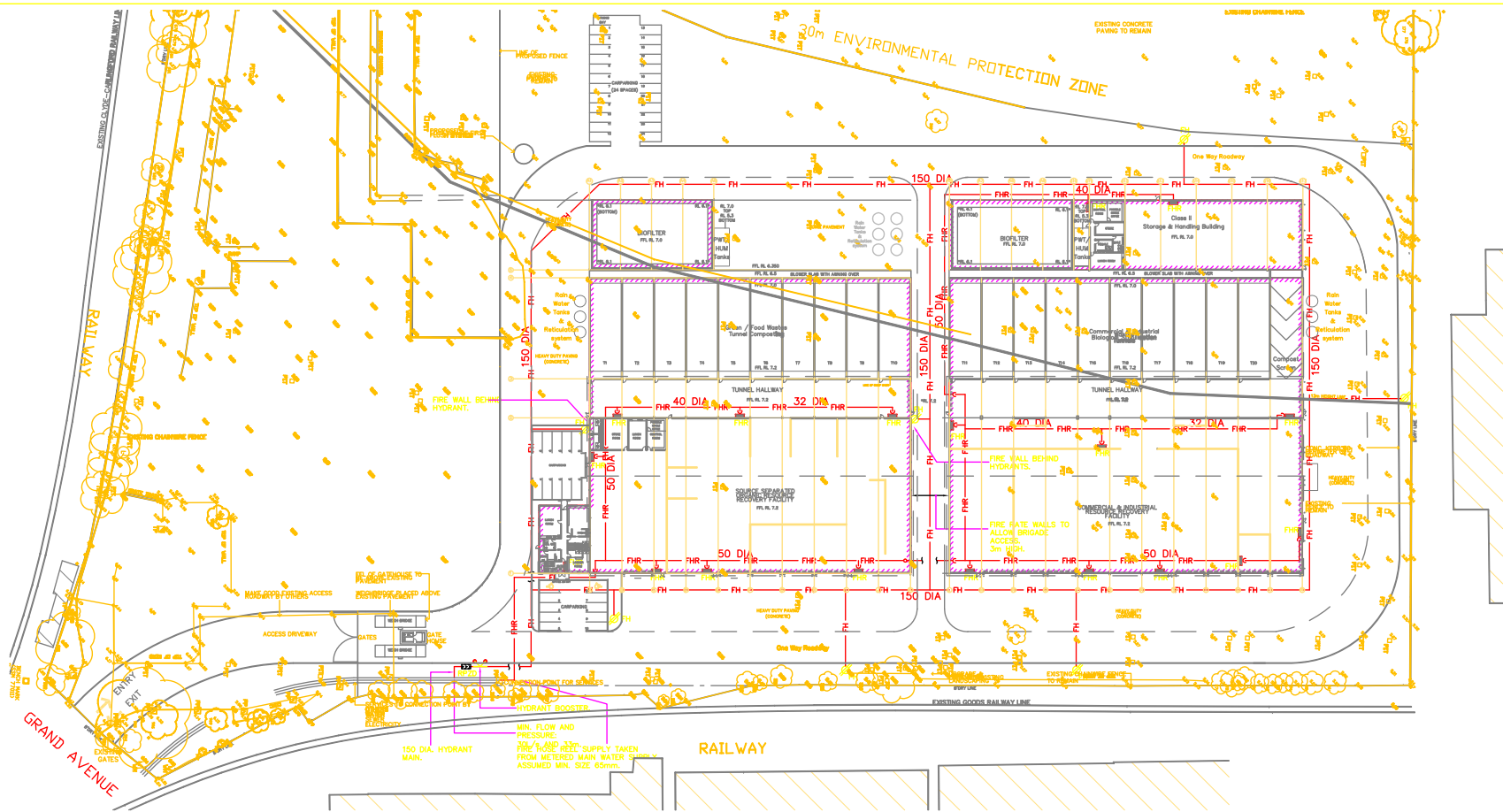
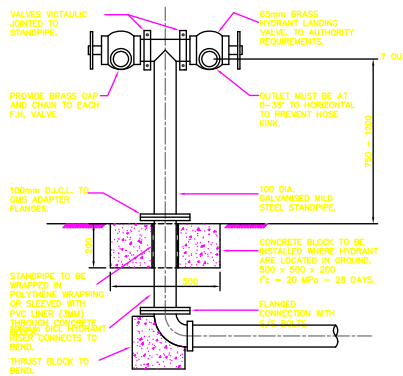


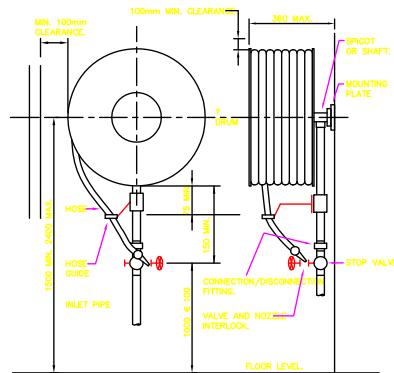
**APPENDIX F**  
**Fire Hydrant and Hose Reel**  
**Layout**



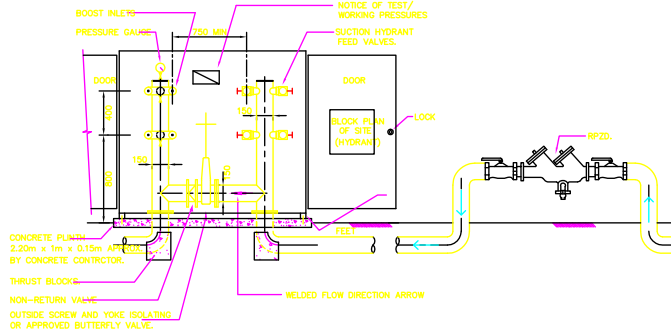
SITE PLAN  
SCALE 1:500



TYPICAL DOUBLE HEADED EXTERNAL HYDRANT  
SCALE 1:10



FIRE HOSE REEL DETAIL  
MOUNT IN ACCORDANCE WITH AS/NZS 1221.  
NOT TO SCALE



TYPICAL HYDRANT BOOSTER VALVE ARRANGEMENT DETAILS  
CABINET WITH DOORS OPEN  
NOT TO SCALE

## NOTES

- 1 FIRE HYDRANT AND FIRE HOSE REEL COVERAGE NOT PROVIDED TO COMPOSTING TUNNELS. FIRE ENGINEER REPORT REQUIRED TO COVER THIS NON-COMPLIANCE.
- 2 FIRE WALL BEHIND HYDRANTS TO BE 90/90/90 CONSTRUCTION 2m EACH SIDE OF HYDRANT AND 3m ABOVE GROUND LEVEL.
- 3 ALL PIPEWORK TO BE LOCATED IN FULL LAYER. DO NOT BREAK CAPPING LAYER.
- 4 MIN. COVER OVER PIPES = 450mm.

## LEGEND

### PROPOSED SERVICES

- FHR — FIRE HOSE REEL PIPE
- FHR — FIRE HYDRANT PIPE
- FHR — DOUBLE HEADED FIRE HYDRANT
- FHR — FIRE HOSE REEL
- FHR — HYDRANT BOOSTER
- RP2D — REDUCED PRESSURE ZONE DEVICE

Issue	By	Description	Date



Project No.	10-40
Client	REMUNDIS PTY LTD
Title	FIRE HYDRANT AND HOSE REEL LAYOUT PLAN FOR PLANNING APPROVAL
Activity Type	

Date	JUNE 20
Scale	AS SHOWN
Drawn	Woolacotts
Checked	Woolacotts

Hydraulic Engineer	Woolacotts
Structural Engineer	Woolacotts
Electrical Engineer	Woolacotts
Mechanical Engineer	Woolacotts
Civil Engineer	Woolacotts
Environmental Engineer	Woolacotts
Health & Safety Engineer	Woolacotts
Other	

Project No.	10-40
Client	REMUNDIS PTY LTD
Title	FIRE HYDRANT AND HOSE REEL LAYOUT PLAN FOR PLANNING APPROVAL
Activity Type	