

SERVICES SHOWN HEREON HAVE BEEN LOCATED BY VISIBLE INSPECTION ONLY WITH THE ASSISTANCE OF LOCATION DIAGRAMS SUPPLIED BY SERVICE AUTHORITIES.

THE EXACT UNDERGROUND LOCATIONS OF SERVICES SHOULD BE DETERMINED BY EXCAVATION, OR IN CONSULTATION WITH THE RELEVANT AUTHORITIES. UNDERGROUND INFORMATION FROM 'DIAL BEFORE YOU DIG' SHOULD BE OBTAINED PRIOR TO ANY EXCAVATION WORK ON SITE.

DRAINAGE LINES BETWEEN PITS ARE BASED ON DESIGN DRAWING SUPPLIED AND ARE ESTIMATES ONLY.

CONTOURS SHOWN HEREON HAVE BEEN INTERPOLATED FROM OBSERVED SPOT HEIGHTS WHICH SHOULD BE USED IN PREFERENCE TO THE INTERPOLATED VALUES WHERE POSSIBLE.

TREE SPREADS SHOWN ARE DIAGRAMMATIC ONLY.

CADASTRAL BOUNDARIES SHOWN HEREON HAVE BEEN COMPILED FROM PLANS ON PUBLIC RECORD AND DETERMINED FROM LIMITED SURVEYED CONNECTIONS.

A COMPLETE SURVEY REDEFINITION HAS NOT BEEN UNDERTAKEN.

SURVEY ON MGA ORIENTATION WITH GROUND DISTANCES AND LOCAL CO-ORDINATE SYSTEM.

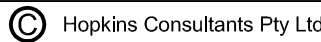
NOTE: ADDITIONAL WATER SERVICES IN POLYPIPE MAYBE LOCATED IN THIS AREA BUT NOT DETECTABLE WITHOUT EXCAVATION. REFER TO SERVICES DRAWINGS ON SITE FOR APPROXIMATE LOCATION.

CONTOUR INTERVAL: 0.25m

#### LEGEND

- SMH - SEWER MAN HOLE
- GPIT - GRATED PIT
- JPT - JUNCTION PIT
- KIP - KERB INLET PIT
- TPIT - TELSTRA PIT
- HYD - HYDRANT
- LP - LIGHT POLE
- G - GARDEN
- FHR - FIRE HOSE REEL
- PP - POWER POLE
- SC - STEEL COLUMN
- 16.08 SPOT HEIGHTS IN RED ARE LEVEL OF SERVICE PIPE.

Liability limited by a scheme approved under Professional Standards Legislation



HEALTH INFRASTRUCTURE  
HASSELL LIMITED  
PMBH



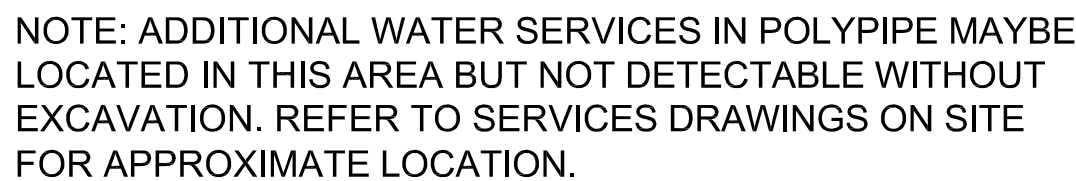
Suite 1 / 109 William Street · PO Box 1556 Port Macquarie NSW 2444 · ABN 27 055 060 878  
Telephone: 02 6583 6722 · Facsimile: 02 6584 9009 · Email: mail@hopcon.com.au

DEVELOPMENT MANAGERS · SURVEYORS · ENGINEERS · PLANNERS

## PLAN OF DETAIL SURVEY PORT MACQUARIE BASE HOSPITAL WRIGHTS ROAD PORT MACQUARIE

DRAWING NUMBER/REFERENCE		REV.
6533-002.DWG		
DESIGNER	ORIGIN OF LEVELS	DATE
PG	SSM-31674	19/10/2011
SURVEYOR	HEIGHT	SHEET SIZE
DB	RL 11.553	A1
DRAFTING	DATUM	SHEET NO.
DB	AHD	1
APPROVED	SCALE	TOTAL
DB	1:200	7





### SURVEY ON MGA ORIENTATION WITH GROUND DISTANCES AND LOCAL CO-ORDINATE SYSTEM.

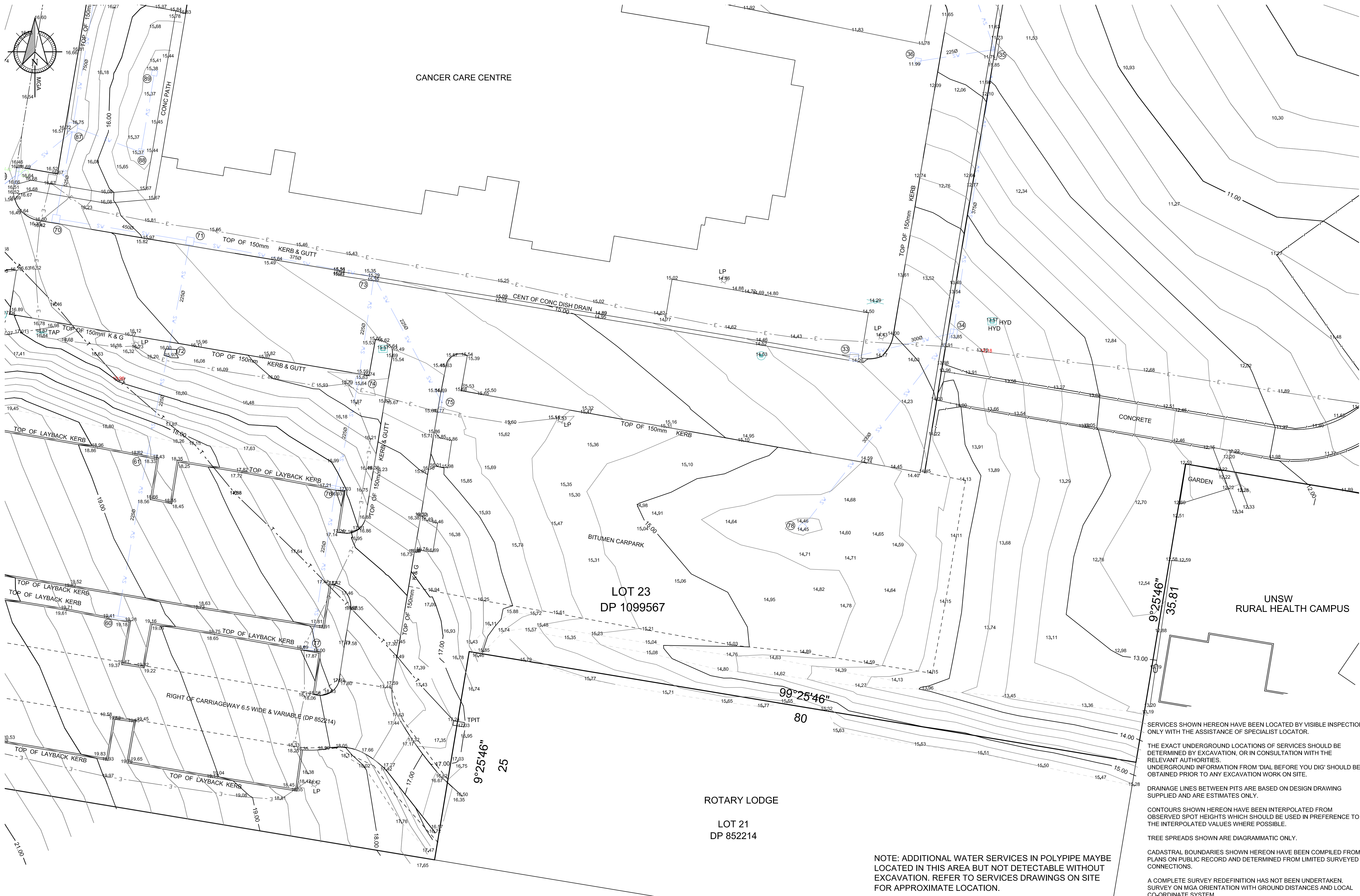


HEALTH INFRASTRUCTURE  
HASSELL LIMITED  
PMBH



DRAWING NUMBER/REFERENCE <b>6533-002.DWG</b>		REV.
DESIGNER	ORIGIN OF LEVELS <b>SSM-31674</b>	DATE <b>19/10/2011</b>
SURVEYOR <b>PG</b>	HEIGHT <b>RL 11.553</b>	SHEET SIZE <b>A1</b>
DRAFTING <b>DB</b>	DATUM <b>AHD</b>	SHEET NO. <b>2</b>
APPROVED <b>DB</b>	SCALE <b>1:200</b>	TOTAL <b>7</b>





Liability limited by a scheme approved under Professional Standards Legislation © Hopkins Consultants Pty Ltd

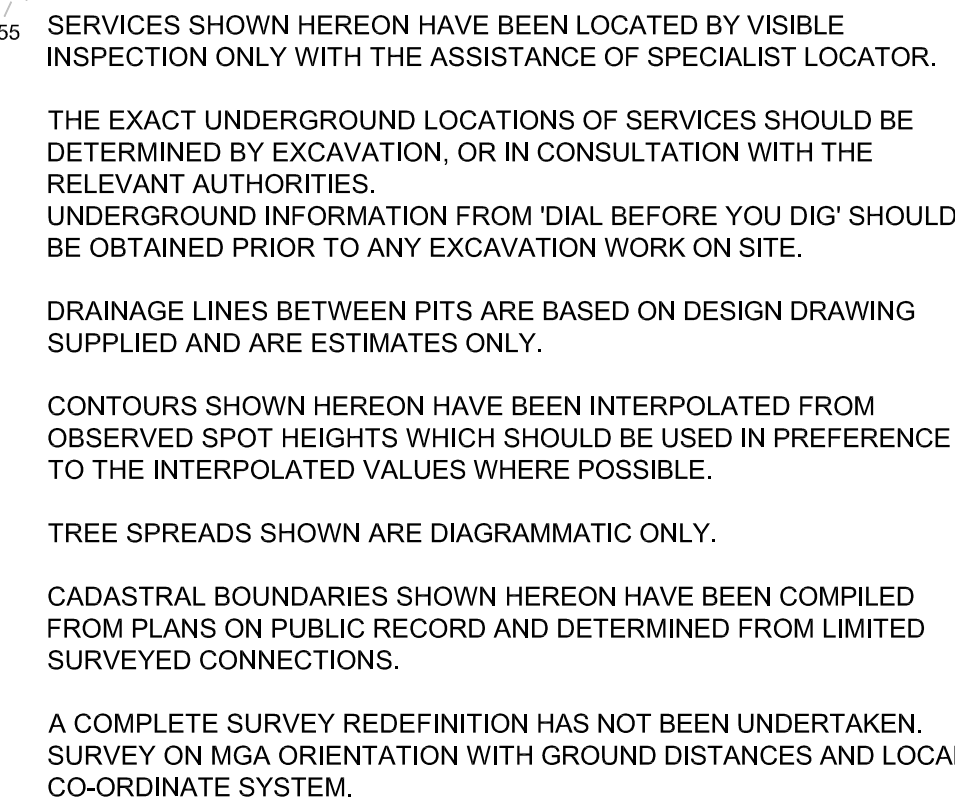
HEALTH INFRASTRUCTURE  
HASSELL LIMITED  
PMBH

**HOPKINS CONSULTANTS** PTY LTD  
Suite 1 / 109 William Street · PO Box 1556 Port Macquarie NSW 2444 · ABN 27 055 060 878  
Telephone: 02 6583 6722 · Facsimile: 02 6584 9009 · Email: mail@hopcon.com.au  
DEVELOPMENT · MANAGERS · SURVEYORS · ENGINEERS · PLANNERS

PLAN OF DETAIL SURVEY  
PORT MACQUARIE BASE HOSPITAL  
WRIGHTS ROAD  
PORT MACQUARIE

DRAWING NUMBER/REFERENCE		REV.
65333-002.DWG		
DESIGNER	ORIGIN OF LEVELS	DATE
PG	SSM-31674	19/10/2011
SURVEYOR	HEIGHT	SHEET SIZE
DB	RL 11.553	A1
DRAFTING	DATUM	SHEET NO.
DB	AHD	3
APPROVED	SCALE	TOTAL
DB	1:200	7





Liability limited by a scheme approved under Professional Standards Legislation

 **HOPKINS CONSULTANTS** PTY LTD

Suite 1 / 109 William Street • PO Box 1556 Port Macquarie NSW 2444 • ABN 27 055 060 878  
Telephone: 02 6583 6722 • Facsimile: 02 6584 9009 • Email: [mail@hopcon.com.au](mailto:mail@hopcon.com.au)

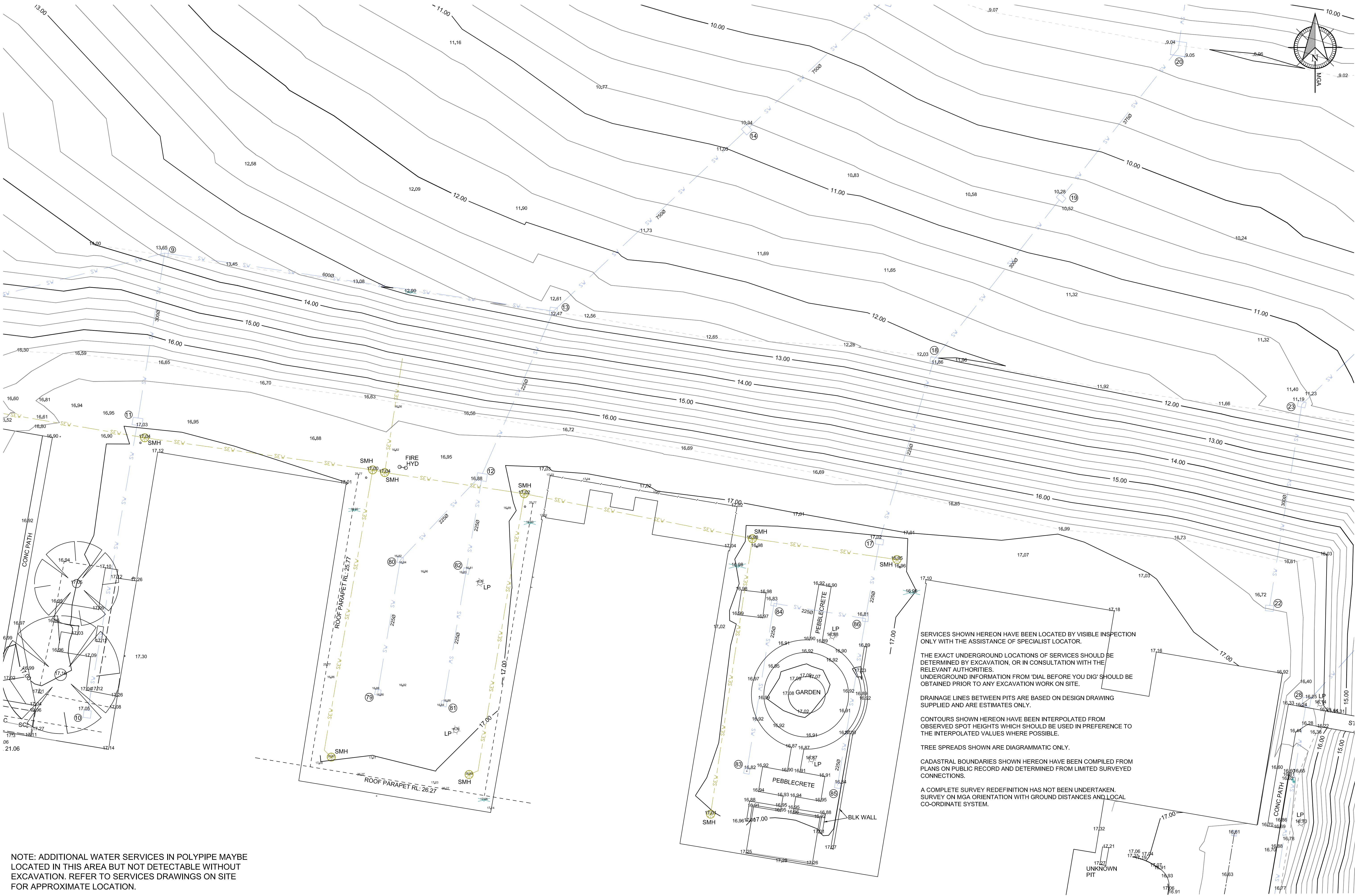
**DEVELOPMENT MANAGERS • SURVEYORS • ENGINEERS • PLANNERS**

DRAWING NUMBER/REFERENCE		REV.
6533-002.DWG		
DESIGNER	ORIGIN OF LEVELS	DATE
	SSM-31674	19/10/2011
SURVEYOR	HEIGHT	SHEET SIZE
PG	RL 11.553	A1
DRAFTING	DATUM	SHEET NO.
DB	AHD	4
APPROVED	SCALE	TOTAL
DB .....	1:200	7









NOTE: ADDITIONAL WATER SERVICES IN POLYPIPE MAYBE LOCATED IN THIS AREA BUT NOT DETECTABLE WITHOUT EXCAVATION. REFER TO SERVICES DRAWINGS ON SITE FOR APPROXIMATE LOCATION.

No.	DATE	REVISIONS	BY		

Liability limited by a scheme approved under Professional Standards Legislation

HEALTH INFRASTRUCTURE  
HASSELL LIMITED  
PMBH



**HOPKINS CONSULTANTS**  
PTY LTD

Suite 1 / 109 William Street · PO Box 1556 Port Macquarie NSW 2444 · ABN 27 055 060 878  
Telephone: 02 6583 6722 · Facsimile: 02 6584 9009 · Email: mail@hopcon.com.au

DEVELOPMENT MANAGERS • SURVEYORS • ENGINEERS • PLANNERS

PLAN OF DETAIL SURVEY  
PORT MACQUARIE BASE HOSPITAL  
WRIGHTS ROAD  
PORT MACQUARIE

DRAWING NUMBER/REFERENCE		REV.
6533-002.DWG		
DESIGNER	ORIGIN OF LEVELS	DATE
PG	SSM-31674	19/10/2011
SURVEYOR	HEIGHT	SHEET SIZE
DB	RL 11.553	A1
DRAFTING	DATUM	SHEET NO.
DB	AHD	6
APPROVED	SCALE	TOTAL
DB	1:200	7



SERVICES SHOWN HEREON HAVE BEEN LOCATED BY VISIBLE INSPECTION ONLY WITH THE ASSISTANCE OF SPECIALIST LOCATOR.

THE EXACT UNDERGROUND LOCATIONS OF SERVICES SHOULD BE DETERMINED BY EXCAVATION, OR IN CONSULTATION WITH THE RELEVANT AUTHORITIES.

UNDERGROUND INFORMATION FROM 'DIAL BEFORE YOU DIG' SHOULD BE OBTAINED PRIOR TO ANY EXCAVATION WORK ON SITE.

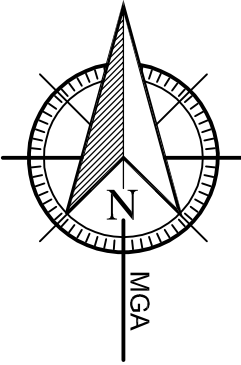
DRAINAGE LINES BETWEEN PITS ARE BASED ON DESIGN DRAWING SUPPLIED AND ARE ESTIMATES ONLY.

CONTOURS SHOWN HEREON HAVE BEEN INTERPOLATED FROM OBSERVED SPOT HEIGHTS WHICH SHOULD BE USED IN PREFERENCE TO THE INTERPOLATED VALUES WHERE POSSIBLE.

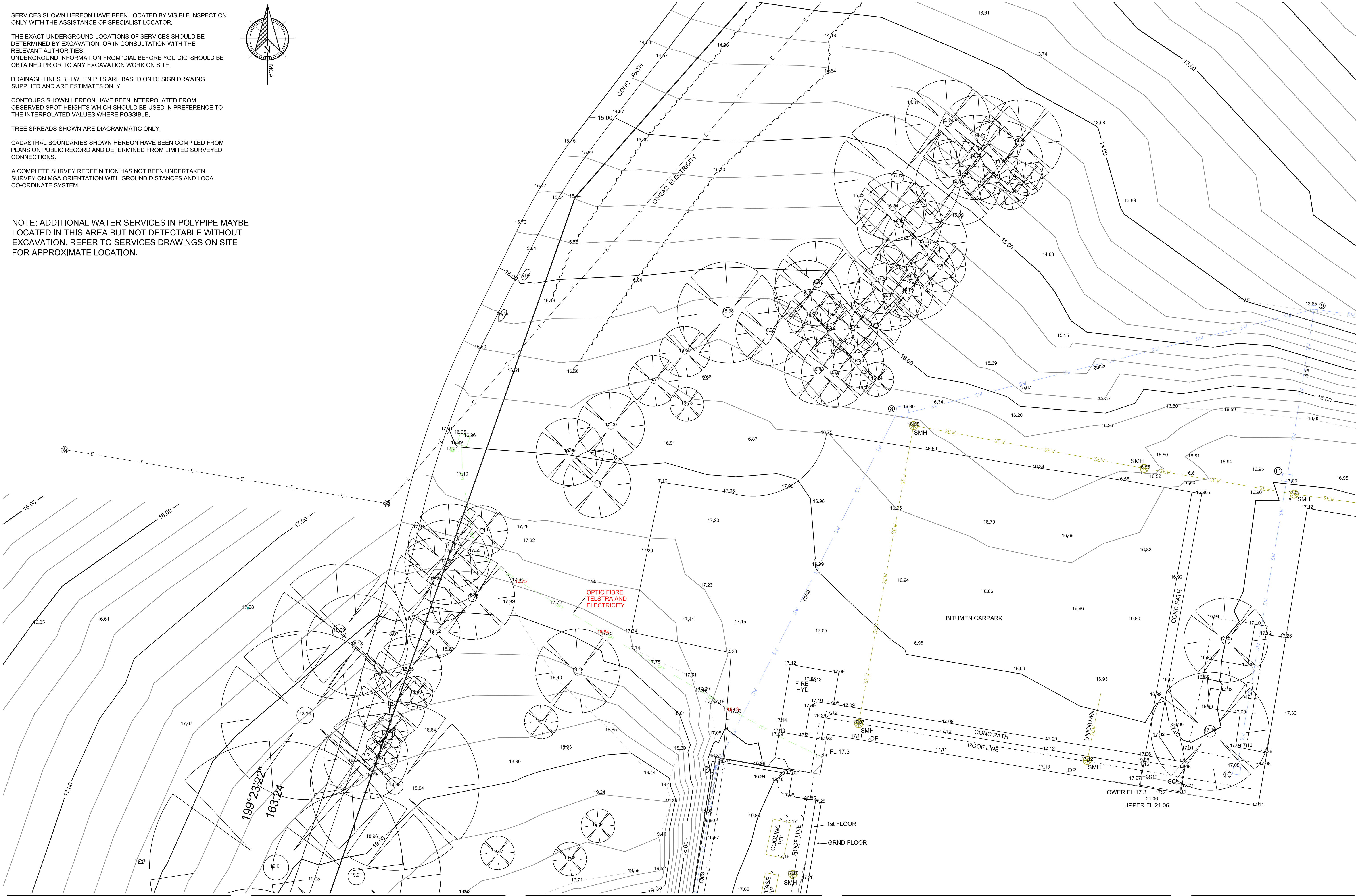
TREE SPREADS SHOWN ARE DIAGRAMMATIC ONLY.

CADASTRAL BOUNDARIES SHOWN HEREON HAVE BEEN COMPILED FROM PLANS ON PUBLIC RECORD AND DETERMINED FROM LIMITED SURVEYED CONNECTIONS.

A COMPLETE SURVEY REDEFINITION HAS NOT BEEN UNDERTAKEN. SURVEY ON MGA ORIENTATION WITH GROUND DISTANCES AND LOCAL CO-ORDINATE SYSTEM.



NOTE: ADDITIONAL WATER SERVICES IN POLYPIPE MAYBE LOCATED IN THIS AREA BUT NOT DETECTABLE WITHOUT EXCAVATION. REFER TO SERVICES DRAWINGS ON SITE FOR APPROXIMATE LOCATION.



No.	DATE	REVISIONS	BY		

Liability limited by a scheme approved under Professional Standards Legislation

HEALTH INFRASTRUCTURE  
HASSELL LIMITED  
PMBH



**HOPKINS CONSULTANTS**  
PTY LTD

Suite 1 / 109 William Street · PO Box 1556 Port Macquarie NSW 2444 · ABN 27 055 060 878  
Telephone: 02 6583 6722 · Facsimile: 02 6584 9009 · Email: mail@hopcon.com.au

DEVELOPMENT MANAGERS • SURVEYORS • ENGINEERS • PLANNERS

PLAN OF DETAIL SURVEY  
PORT MACQUARIE BASE HOSPITAL  
WRIGHTS ROAD  
PORT MACQUARIE

DRAWING NUMBER/REFERENCE		REV.
6533-002.DWG		
DESIGNER	ORIGIN OF LEVELS	DATE
PG	SSM-31674	19/10/2011
SURVEYOR	HEIGHT	SHEET SIZE
DB	RL 11.553	A1
DRAFTING	DATUM	SHEET NO.
DB	AHD	7
APPROVED	SCALE	TOTAL
DB	1:200	7