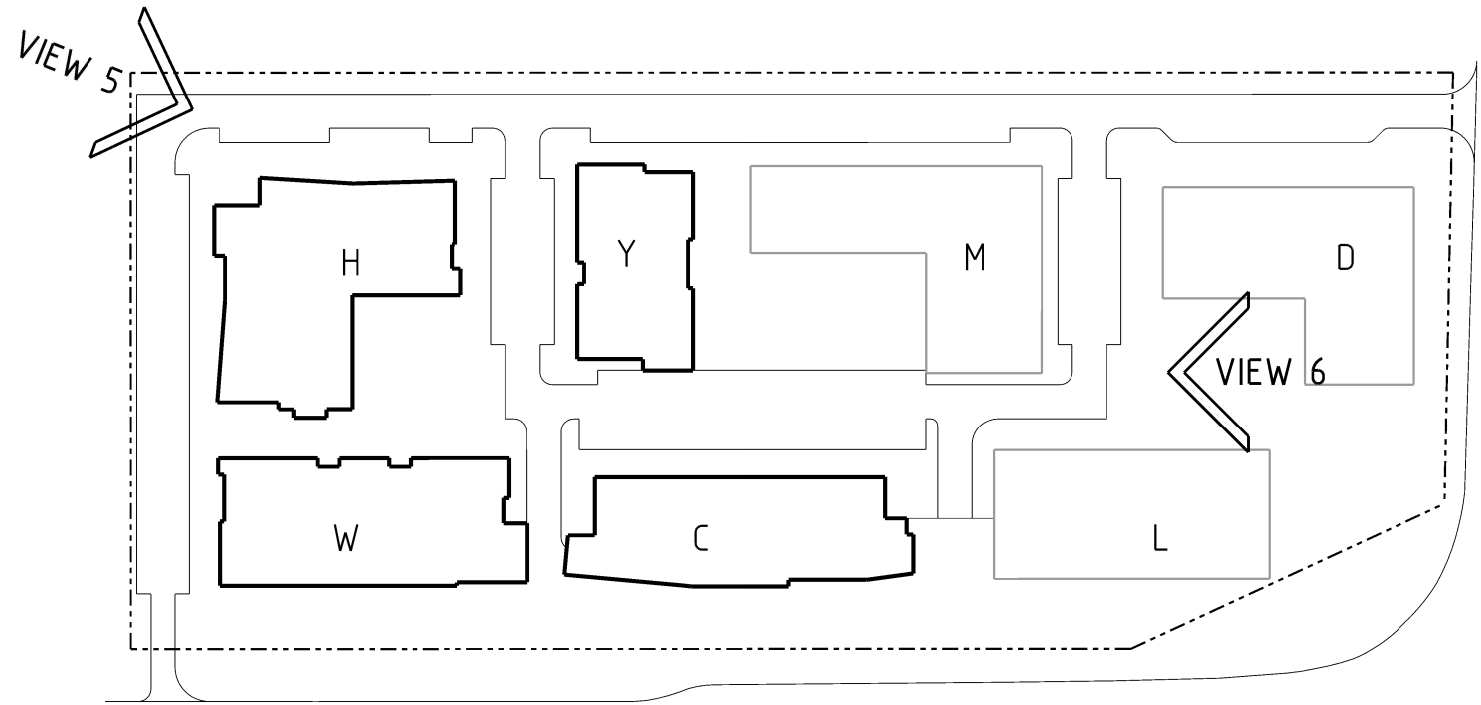




6 INTERNAL VIEW LOOKING NORTH WEST  
NTS



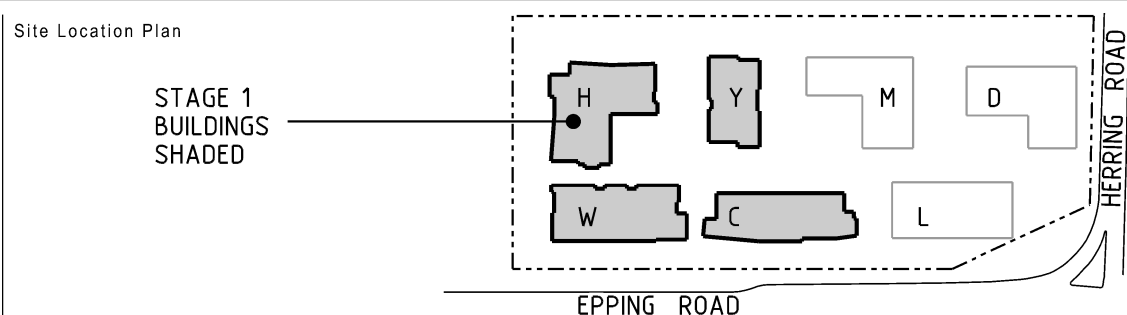
5 VIEW FROM NORTH WEST CORNER  
NTS

Revisions	No	Date	Description	Ver	App'd
A	21.01.11		PART 3A SUBMISSION		
B	14.12.11		PREFERRED PROJECT		
C	24.02.12		PREFERRED PROJECT		

Do not scale drawings. Use figured dimensions only. Check & verify levels and dimensions on site prior to the commencement of any work, the preparation of shop drawings or the fabrication of components.

This drawing is the copyright of Allen Jack + Cotter Architects and is protected under the Copyright Act 1968. Do not alter, reproduce or transmit in any form, or by any means without the express permission of Allen Jack + Cotter Architects.

Nominated Architects: Michael Heenan 5264, Peter Ireland 6661, Reginald Smith 3312



Client



**STAMFORD**  
LAND CORPORATION LTD

Architect

**AJ+C**  
ALLEN JACK + COTTER

79 Myrtle Street Chippendale NSW 2008 AUSTRALIA  
ph +61 2 9311 8222 fx +61 2 9311 8200 ABN 53 003 782 250

Project

**MACQUARIE VILLAGE**  
110-114 HERRING ROAD  
MACQUARIE PARK

Proj No. **10\_030**

Drawing Title

**VIEWS SHEET 3**

Drawing Status

**NOT FOR CONSTRUCTION**

Scale

**NTS**

Drawing No

**DA3632**

Issue

**C**