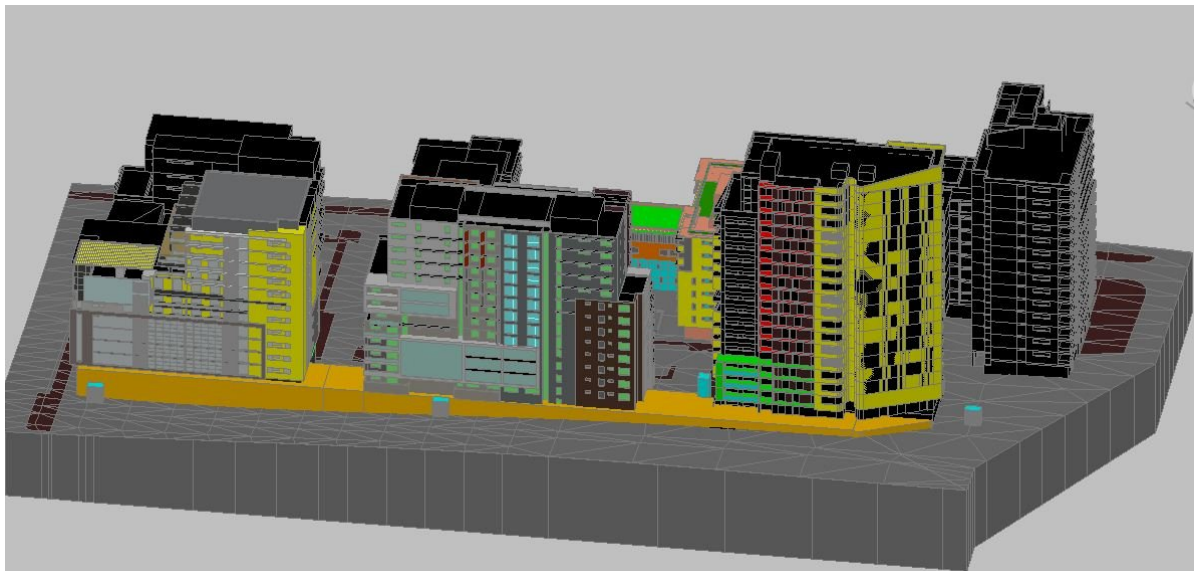


Allen Jack + Cottier



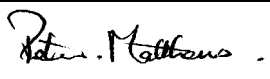
Macquarie Village Wind Effects Statement



Report No. 20C-10-0305-TRP-589430-6

21 February 2012

DOCUMENT CONTROL

Macquarie Village		
Wind Effects Statement		
REPORT NO: 20C-10-0305-TRP-589430-6	LIBRARY CODE:	
PREPARED FOR: Allen Jack + Cottier 79 Myrtle Street Chippendale NSW 2008	PREPARED BY: Vipac Engineers & Scientists Ltd 2 Sirius Rd Lane Cove NSW 2066 AUSTRALIA	
Contact: Mark Louw	e: Sydneey@vipac.com.au	
Phone: +61 2 9311 8222	t: +61 2 9422 4222	
Fax : +61 2 9311 8200	f: +61 2 9420 5911	
AUTHOR:		
	Seifu Bekele	Date: 21 February 2012
	Principal Wind Engineer	
REVIEWED BY:		
	Ian Dixon	Date: 21 February 2012
	Building & Infrastructure Team Leader	
APPROVED BY:		
	Peter Matthews	Date: 21 February 2012
	Manager, Vipac Northern Regions	
REVISION HISTORY:		
Revision No.	Date Issued:	Reason/Comments:
00	30 th November 2010	Internal review
01	21 February 2012	Draft issue
02	16 th December 2010	Revised drawings
03	9 th December 2011	Revised drawings
04	13 th December 2011	Minor changes
05	21 st February 2012	Minor changes
DISTRIBUTION:		
Copy No. <u>2</u>		Location
1		Project
2	Uncontrolled Copy	Client (PDF Format)
KEYWORDS: Wind effects, Macquarie Village		

NOTE: This is a controlled document within the document control system. If revised, it must be marked SUPERSEDED and returned to the VIPAC QA Representative.

EXECUTIVE SUMMARY

This document contains commercial, conceptual and engineering information, which is proprietary to VIPAC Engineers & Scientists Ltd. We specifically state that inclusion of this information does not grant the Client any license to use the information without VIPAC's written permission. We further require that the information not be divulged to a third party without our written consent.

Vipac Engineers & Scientists Ltd (VIPAC) has been commissioned by Allen Jack + Cottier to prepare a wind assessment report of the proposed Macquarie Village, 110-114 Herring road, Macquarie Park, NSW. This appraisal is based on Vipac's experience as a wind-engineering consultancy.

Drawings of the proposed Development were supplied by Allen Jack + Cottier as listed in Appendix C.

The findings of this study can be summarised as follows:

- The proposed Development is not expected to generate wind condition in excess of the recommended criteria on the ground level with:
 - Plantations on the south faces of Building W, C and L.

The assessments provided in this report have been made based on experience of similar situations in Sydney and around the world. As with any opinion, it is possible that an assessment of wind effects based on experience and without wind tunnel model testing can be in error.

TABLE OF CONTENTS

1	INTRODUCTION	6
2	ANALYSIS APPROACH	6
2.1	SITE DESCRIPTION	6
2.2	REGIONAL WIND CLIMATE	9
2.3	FLOW INTERACTIONS WITH ADJACENT DEVELOPMENTS	10
2.4	SITE EXPOSURE	10
2.5	ASSESSMENT CRITERIA	11
3	PEDESTRIAN LEVEL WIND EFFECTS ASSESSMENT	16
3.1	WIND APPROACHING FROM NORTH & NORTHEAST	16
3.2	WIND APPROACHING FROM SOUTH AND SOUTHWEST	16
3.3	WIND APPROACHING FROM WEST	17
4	RECOMMENDATIONS	19
4.1	GROUND LEVEL AREAS.....	19
5	CONCLUSION	19
	APPENDIX A – TERMINOLOGY OF ENVIRONMENTAL WINDS	20
	APPENDIX B - REFERENCES	21
	APPENDIX C – DRAWING LIST	22

LIST OF FIGURES & TABLES

FIGURE 1: SITE LOCATION AND SURROUNDING TERRAIN	7
FIGURE 2: PROPOSED SITE LAYOUT	7
FIGURE 3: THE PROPOSED DEVELOPMENT (SOUTHWEST VIEW)	8
FIGURE 4: THE PROPOSED DEVELOPMENT (NORTHEAST VIEW)	8
FIGURE 5: DIRECTIONAL DISTRIBUTION OF ANNUAL RETURN PERIOD MEAN HOURLY WIND VELOCITIES (M/S) AT GRADIENT HEIGHT FOR SYDNEY.	10

FIGURE 6: SCHEMATIC PLAN VIEW OF THE PROPOSED BUILDING A1/A2 WITH THE RECOMMENDED WIND CRITERIA OVERLAID ON ADJACENT GROUND LEVEL AREAS.	12
FIGURE 7: SCHEMATIC PLAN VIEW OF THE PROPOSED BUILDING A3 WITH THE RECOMMENDED WIND CRITERIA OVERLAID ON ADJACENT GROUND LEVEL AREAS.	13
FIGURE 8: SCHEMATIC PLAN VIEW OF THE PROPOSED BUILDING B1, B2 AND B3 WITH THE RECOMMENDED WIND CRITERIA OVERLAID ON ADJACENT GROUND LEVEL AREAS.	13
FIGURE 9: SCHEMATIC PLAN VIEW OF THE PROPOSED BUILDING C1 AND C2 WITH THE RECOMMENDED WIND CRITERIA OVERLAID ON ADJACENT GROUND LEVEL AREAS.	14
FIGURE 10: SCHEMATIC PLAN VIEW OF THE PROPOSED BUILDING D1 AND D2 WITH THE RECOMMENDED WIND CRITERIA OVERLAID ON ADJACENT GROUND LEVEL AREAS.	15
FIGURE 11: SCHEMATIC PLAN VIEW OF THE PROPOSED BUILDING D3 WITH THE RECOMMENDED WIND CRITERIA OVERLAID ON ADJACENT GROUND LEVEL AREAS.	15
FIGURE 12: NORTHEAST FLOW AND INTERACTION WITH THE DEVELOPMENT AND EXPECTED EFFECT.....	16
FIGURE 13: SOUTHWEST FLOW AND INTERACTION WITH THE DEVELOPMENT AND EXPECTED EFFECT.	17
FIGURE 14: WEST FLOW AND INTERACTION WITH THE DEVELOPMENT AND EXPECTED EFFECT.	18
TABLE 1: RECOMMENDED WIND COMFORT AND SAFETY	11
TABLE 2: RECOMMENDED APPLICATION OF CRITERIA	12

1 INTRODUCTION

Vipac Engineers & Scientists Ltd (VIPAC) has been commissioned by Allen Jack + Cottier to prepare a wind assessment report for the proposed Macquarie Village Development at 110-114 Herring road, Macquarie Park, NSW.

This report details the opinion of Vipac as an experienced wind engineering consultancy regarding the wind effects in ground level public areas and access-ways in and adjacent to the Development as proposed. No wind tunnel testing has been carried out for this Development. Vipac has carried out wind tunnel studies on a large number of developments of similar shape and having similar exposure to that of the proposed Development. These serve as some valid references for the prediction of wind effects. Empirical data for typical buildings in boundary layer flows has also been used to estimate the likely ground level wind conditions adjacent to the proposed Development [2, 3].

Drawings of the proposed Development were supplied to Vipac by Allen Jack + Cottier. A list of the drawings used in this desktop study is provided in Appendix C.

2 ANALYSIS APPROACH

In assessing whether a proposed development is likely to generate adverse wind conditions in adjacent ground level areas, Vipac has considered the following points:

- Site characteristics, including the geometry and orientation of the proposed development;
- The regional wind climate;
- The interaction of predicted flows with adjacent developments;
- The exposure of the proposed development to wind;
- Comparison of generated wind speeds against the accepted assessment criteria as determined by the intended use of the public areas.

2.1 SITE DESCRIPTION

The proposed development site is located at the corner of Epping Road and Herring Road in North Ryde. The development is currently located in the middle of existing low-rise buildings typically not above 2 storeys and comprises medium rise residential towers of various heights (see Figure 1). The development is comprised of 7 buildings with orientations as shown on the site layout, Figure 2.

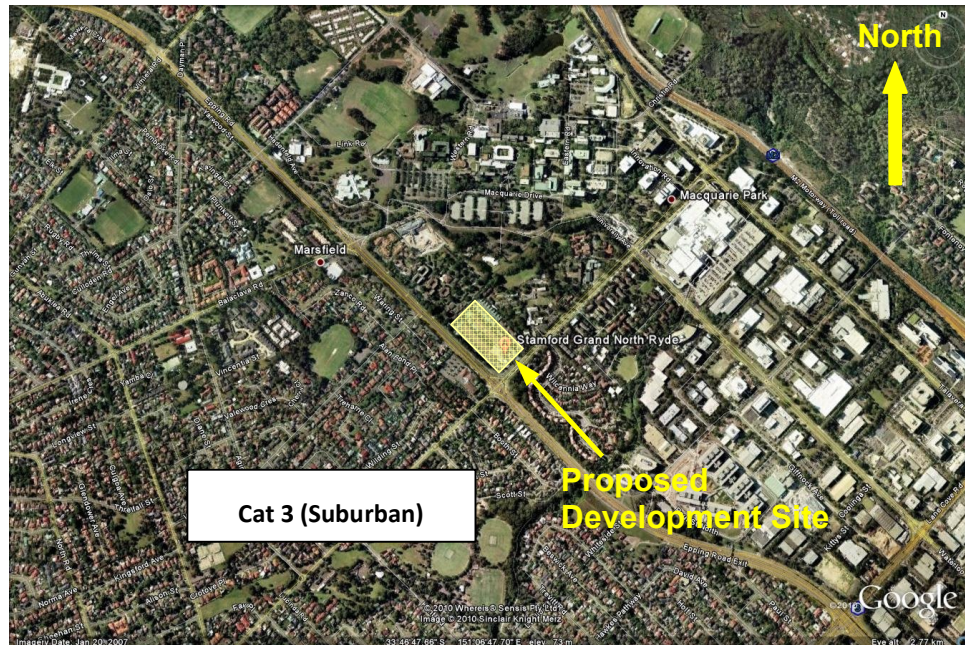


Figure 1: Site location and surrounding terrain

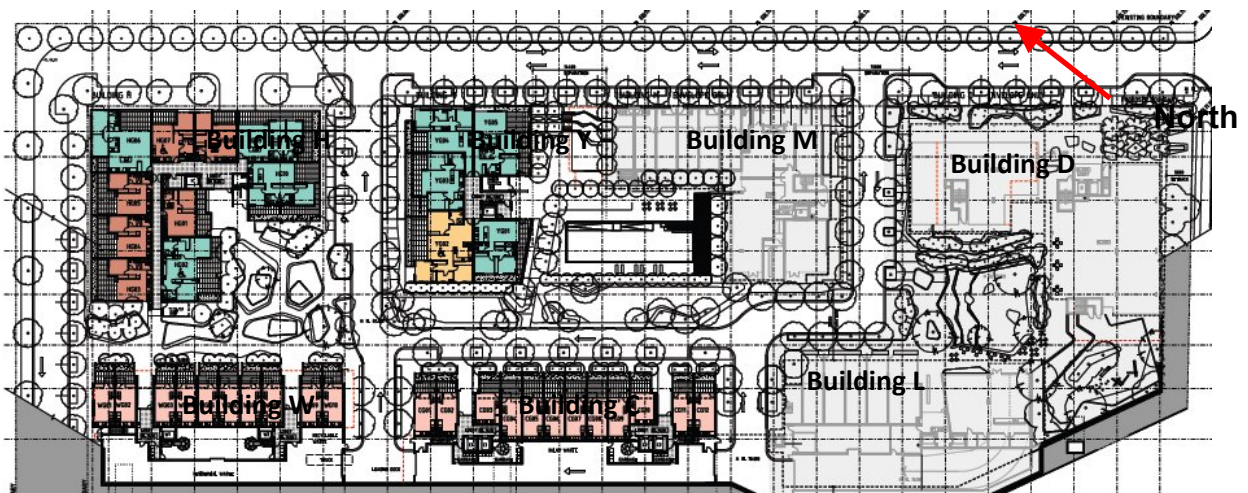


Figure 2: Proposed Site Layout

3 Dimensional views of the site are also shown in Figure 3 and Figure 4.

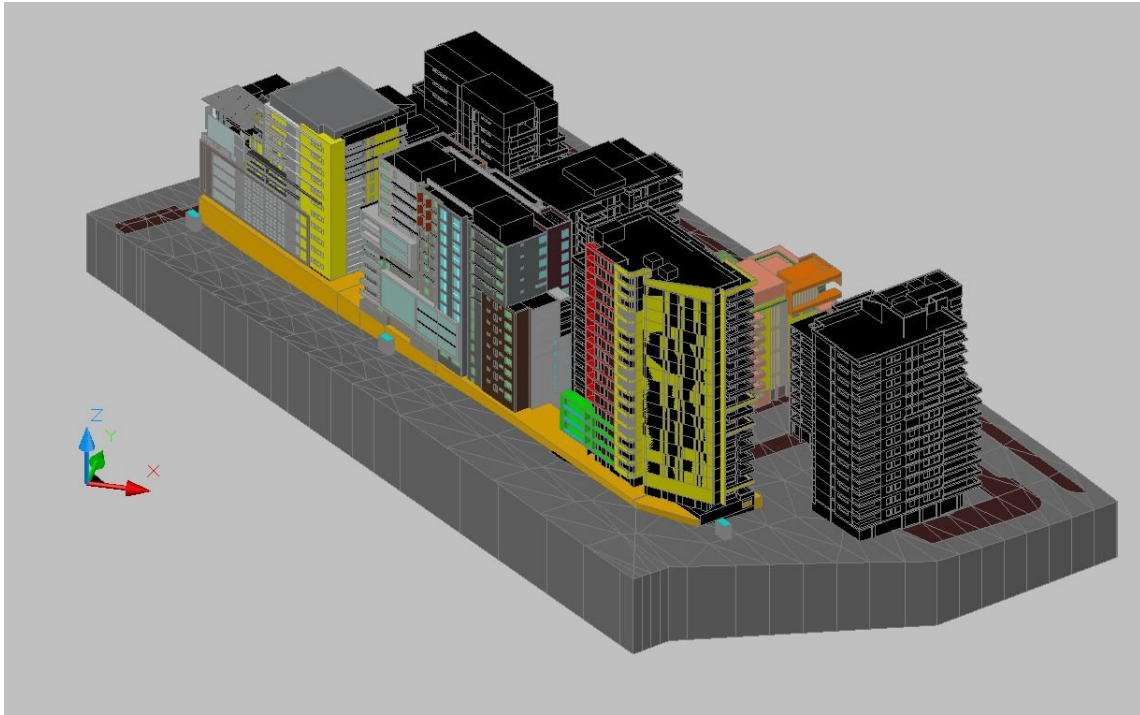


Figure 3: The proposed Development (Southwest view)

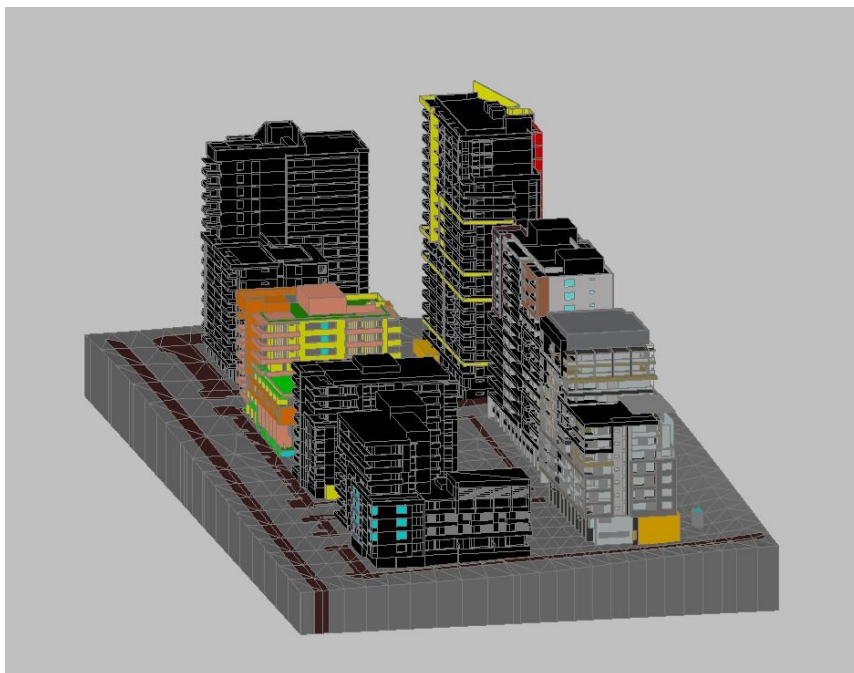


Figure 4: The proposed Development (Northeast view)

The heights of the building from ground level are as follows:

- Building H 29.2m
- Building W 44.8m
- Building Y 29.2m
- Building M 30.3m
- Building C 51.8m
- Building D 54.8m
- Building L 67.5m

2.2 REGIONAL WIND CLIMATE

Wind speeds have been recorded at Sydney Airports for over 30 years. This data has been analysed and a composite directional probability distribution of wind speeds have been determined, and calculations made that allow the prediction of the wind environment that exists above the earth's boundary layer. This level is described as the Gradient height. The directional distribution of hourly mean wind speed at the gradient height, with a probability of occurring once per year (i.e. 1 year return period) is shown in Figure 5.

The distribution indicates that the strongest winds above Sydney are from the Northwest, Northeast and Southwest directions. This is factored into the assessment. The wind data at this free stream height can be considered to be common to all Sydney sites and is used as a reference to assess ground level wind conditions at this site.

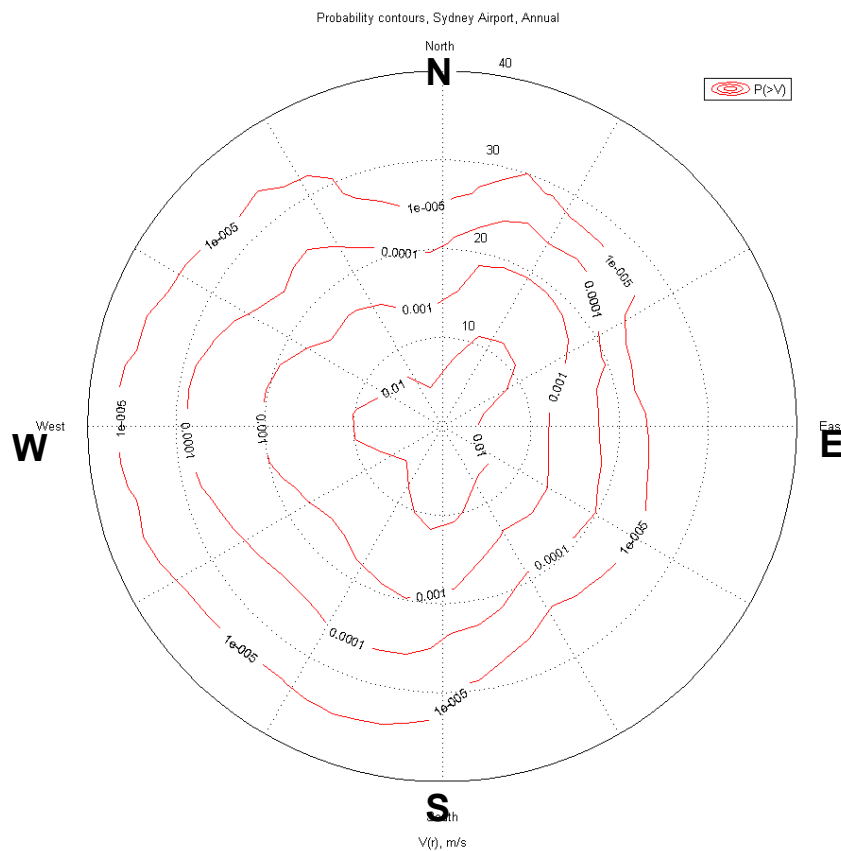


Figure 5: Directional Distribution of Annual Return Period Mean Hourly Wind Velocities (m/s) at Gradient Height for Sydney.

2.3 FLOW INTERACTIONS WITH ADJACENT DEVELOPMENTS

Figure 1, Figure 3 and Figure 4 show the proposed development and immediately surrounding buildings. It is noted that the proposed buildings are higher than the immediately surrounding buildings. Thus the proposed buildings will become a wind catcher, especially for the north side of buildings L and W.

However, the proposed buildings have balconies, which tends to break a smooth flow and reduce the high wind speed at ground level.

2.4 SITE EXPOSURE

There are low-rise developments surrounding the site in all directions. As the proposed development will be above the existing buildings it will be directly exposed to wind from all directions.

Therefore, considering the immediate surroundings and upstream terrain, the site of the proposed Development is assumed to be terrain Category 3 (Suburban) from all directions (see Figure 1).

2.5 ASSESSMENT CRITERIA

With some consensus of international opinion, pedestrian wind comfort is rated according to the suitability of certain activities at a site in relation to the expected annual peak 3-second gust velocity at that location for each wind direction. Each of the major areas around the site are characterised by the annual maximum gust wind speeds. Most patrons would consider a site generally unacceptable for its intended use if it were probable that during one annual wind event, a peak 3-second gust occurs which exceeds the established comfort threshold velocity. If that threshold is exceeded once per year then it is also likely that during moderate winds, noticeably unpleasant wind conditions would result, and the windiness of the location would be voted as unacceptable.

In a similar manner, a set of hourly mean velocity criteria with a 1% probability of occurrence are also applicable to ground level areas in and adjacent to the proposed Development. An area should be within both the relevant mean and gust limits in order to satisfy the particular human comfort and safety criteria in question.

The threshold ***gust velocity*** criteria and threshold ***mean velocity*** criteria are listed in Table 1.

Where Vipac predicts that a location would not meet its appropriate comfort criterion, the use of wind control devices, landscaping and/or local building geometry modifications to achieve the desired comfort rating may be recommended. For complex flow scenarios or where predicted flow conditions are well in excess of the recommended criteria, Vipac recommends scale model wind tunnel testing to determine

the type and scope of the wind control measures required to achieve acceptable wind conditions.

Table 1: Recommended Wind Comfort and Safety

Annual Maximum Mean	Annual Maximum Gust	Result on Perceived Pedestrian Comfort
>15m/s	>23m/s	Unsafe (frail pedestrians knocked over)
<10m/s	<16m/s	Acceptable for Walking (steady steps for most pedestrians)
<7m/s	<13m/s	Acceptable for Standing (window shopping, vehicle drop off, queuing)
<5m/s	<10m/s	Acceptable for Sitting (outdoor cafés, pool areas, gardens)

With regard to the above and the intended use of the various external areas we recommend the following criteria as detailed in Table 2. Figure 6 through to

Figure 12 show the plan view of ground level areas with the criteria overlaid.

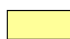

Table 2: Recommended application of criteria

Site Location	Recommended Criteria
Public Footpaths	Acceptable for Walking
Building Entrances	Acceptable for Standing
	Acceptable for Standing

Evaluations of balconies are not included in this report.



Figure 6: Schematic plan view of the proposed Building H with the recommended wind criteria overlaid on adjacent ground level areas.

	Recommended Acceptable for Walking
	Recommended Acceptable for Standing

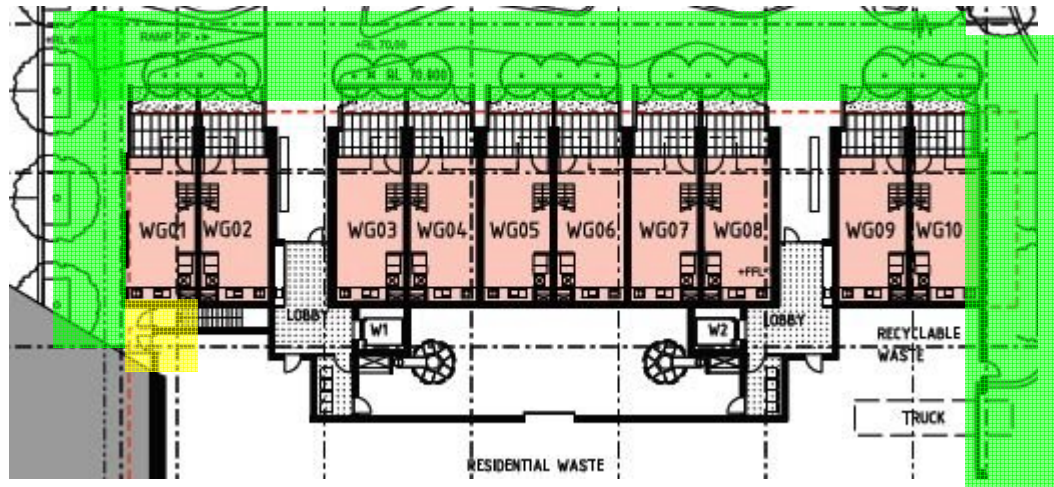


Figure 7: Schematic plan view of the proposed Building W with the recommended wind criteria overlaid on adjacent ground level areas.



Figure 8: Schematic plan view of the proposed Building Y with the recommended wind criteria overlaid on adjacent ground level areas.

	Recommended Acceptable for Walking
	Recommended Acceptable for Standing

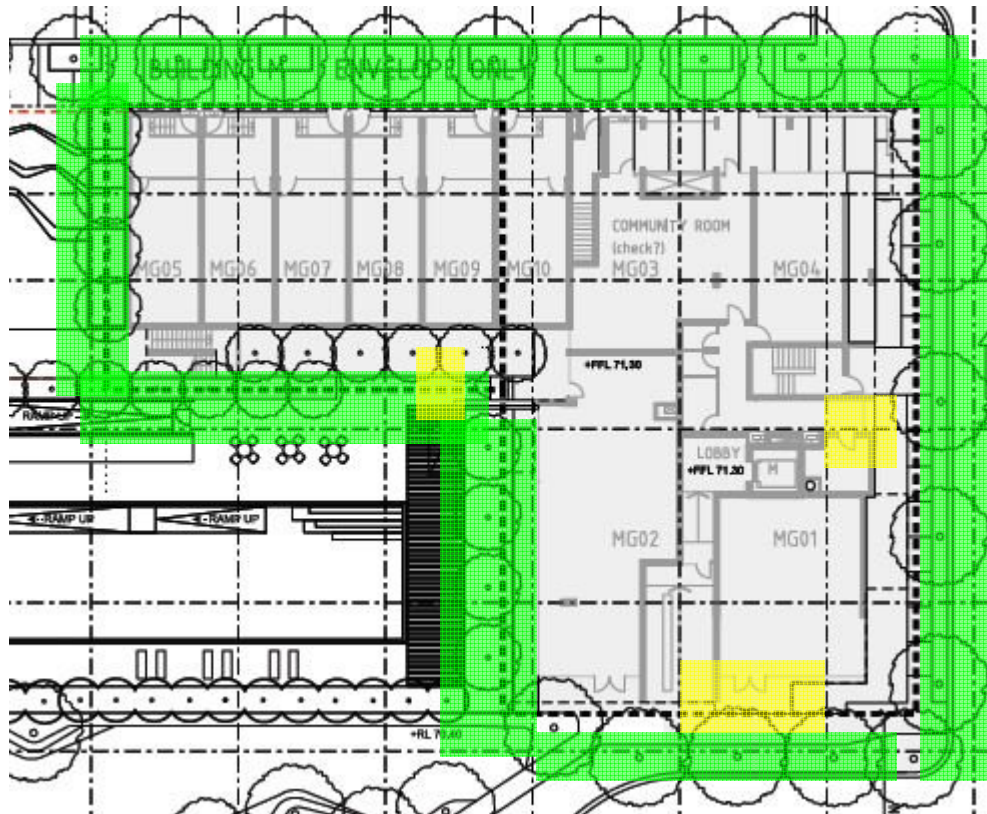


Figure 9: Schematic plan view of the proposed Building M with the recommended wind criteria overlaid on adjacent ground level areas.

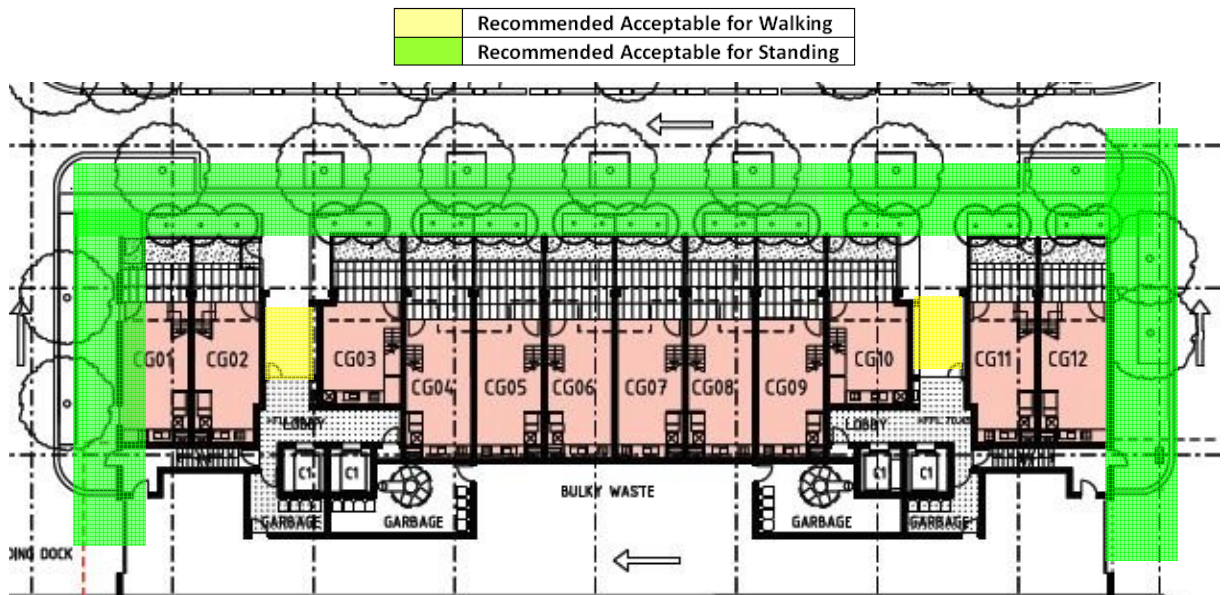


Figure 10: Schematic plan view of the proposed Building C with the recommended wind criteria overlaid on adjacent ground level areas.

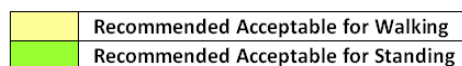




Figure 11: Schematic plan view of the proposed Building D with the recommended wind criteria overlaid on adjacent ground level areas.

	Recommended Acceptable for Walking
	Recommended Acceptable for Standing

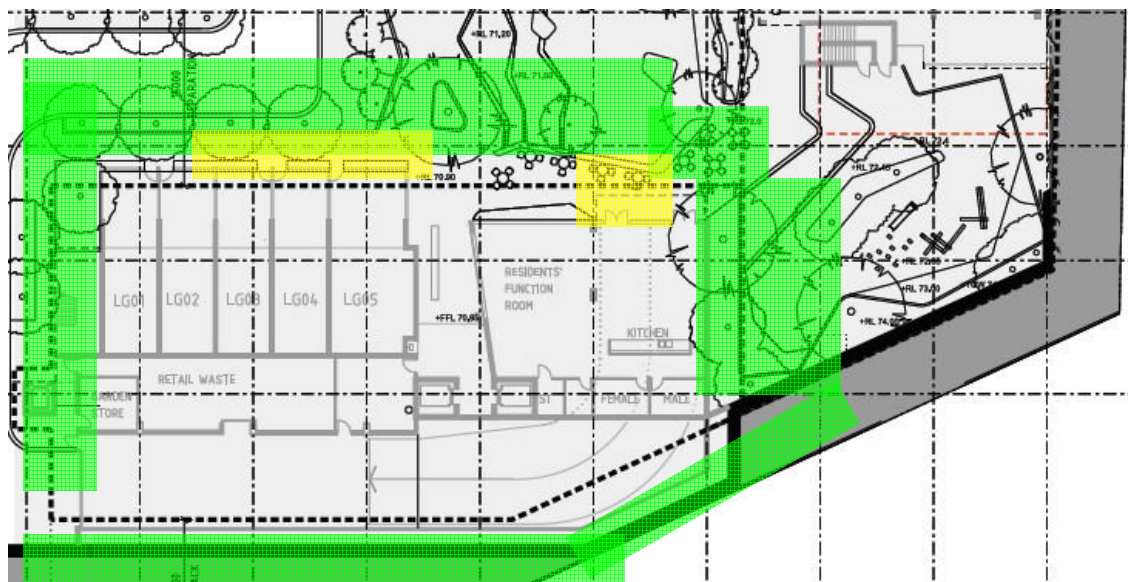


Figure 12: Schematic plan view of the proposed Building L with the recommended wind criteria overlaid on adjacent ground level areas.

	Recommended Acceptable for Walking
	Recommended Acceptable for Standing

3 PEDESTRIAN LEVEL WIND EFFECTS ASSESSMENT

The wind structure interactions at the proposed development for wind approaching from various directions are as follows:

3.1 WIND APPROACHING FROM NORTH & NORTHEAST

The Northeast direction is the prevailing wind direction for Sydney. The buildings H, Y, M and D will catch this wind directly. The one year hourly wind speed will reach 12 - 15 m/s at 10m height. The expected wind flow pattern for this wind is shown in Figure 13.

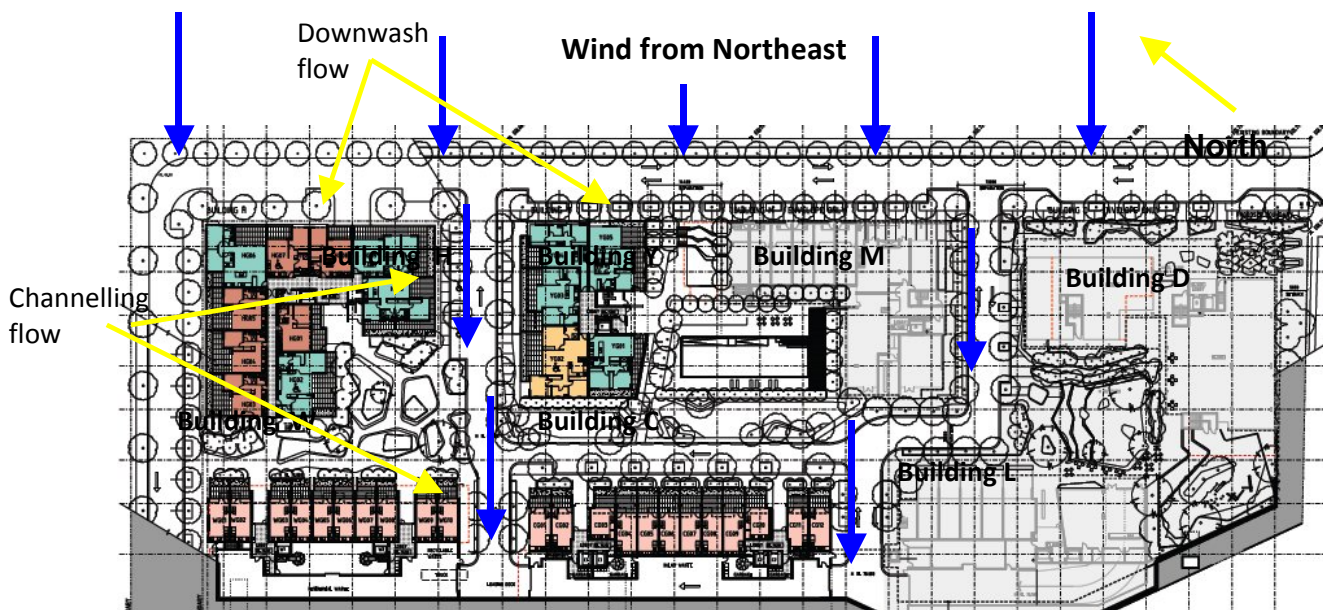


Figure 13: Northeast flow and interaction with the development and expected effect.

The northeast winds flow on the north facades of Buildings H, Y, M and D produce downwash effects on ground level. The wind speeds at the ground level are not expected to be strong due to the balconies on the north facades, which will help break down and dissipate the wind energy before reaching the ground level.

There will be a channelling flow on the footpath between the Building H and Building Y, Building M and Building D. The flow in these areas without wind mitigation is expected to accelerate. To reduce the channelling flow, the proposed plantations on the windward side is expected to reduce the wind speed. However, the effectiveness of any wind control mechanism would need to be validated during the detail design.

3.2 WIND APPROACHING FROM SOUTH AND SOUTHWEST

The wind approaching from the Southwest direction for Sydney is also strong. The once a year wind speed (hourly mean) will reach 12 - 15 m/s at 10m height. The wind at the

ground level will be accelerated by downwash and channelling flows as shown in Figure 14. The downwash flows are expected on the entire south facing buildings. These flows will be minimized at ground level by the balconies on the south face of the buildings and awnings above building entrances.

The channelling flow created by southwest flow will be between Building W and Building C, Building C and Building L. The channelling flow from these directions may reach the walking criteria without wind controlling mechanisms. Using plantations on the southeast and southwest boundaries of the development is expected to slow down the wind at pedestrian level. Channelling flow is expected in the gap between Building C and L as well as between Building W and C. However, the wind speed in these area expected to be within walking criteria considering the width of the gap and the proposed plantations.

The wind from the south will have an effect on building corners by creating corner accelerations without wind mitigation. However, rough facade surfaces, such as the addition of balconies and plantation on the southeast and southwest boundaries is expected to mitigate these corner accelerations at ground level.

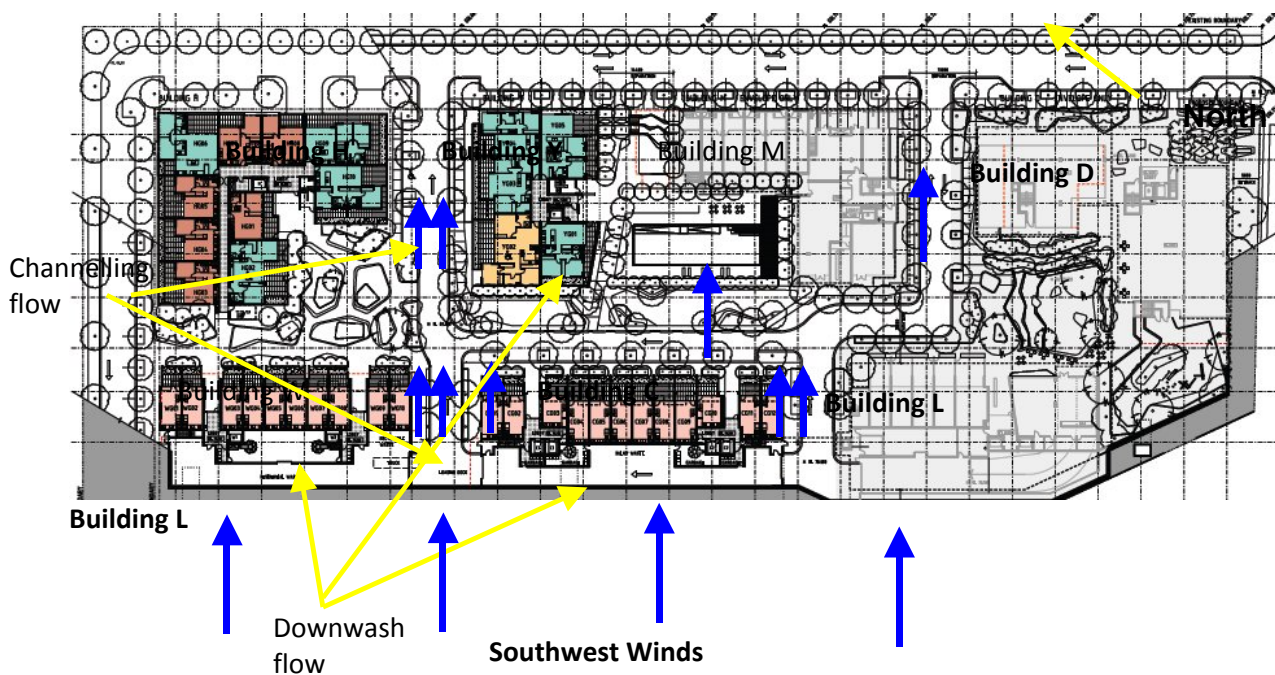


Figure 14: Southwest flow and interaction with the development and expected effect.

3.3 WIND APPROACHING FROM WEST

The wind approaching from the West although of lesser magnitude does so at an angle where the corner acceleration becomes important as shown in Figure 15. The wind speed at these locations can be reduced by using plantations close to the corner to avoid the direct wind flow to the corner of the building at ground level.

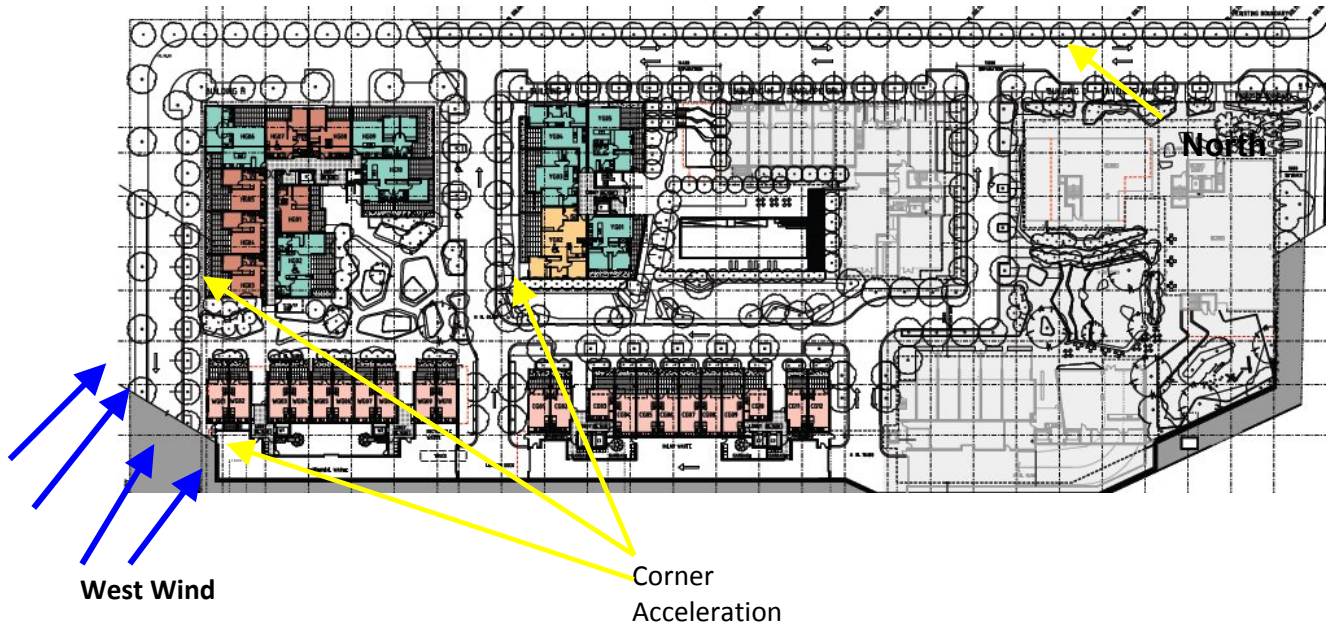


Figure 15: West flow and interaction with the development and expected effect.

3.4 WIND APPROACHING FROM NORTH AND SOUTH

The wind approaching from the north and south will accelerate under the projected out cantilever which is connecting building C and L, Figure 16. However, the proposed plantation on the north and south of the cantilever will slow down the wind. The wind under the cantilever is not expected to exceed the walking criteria.

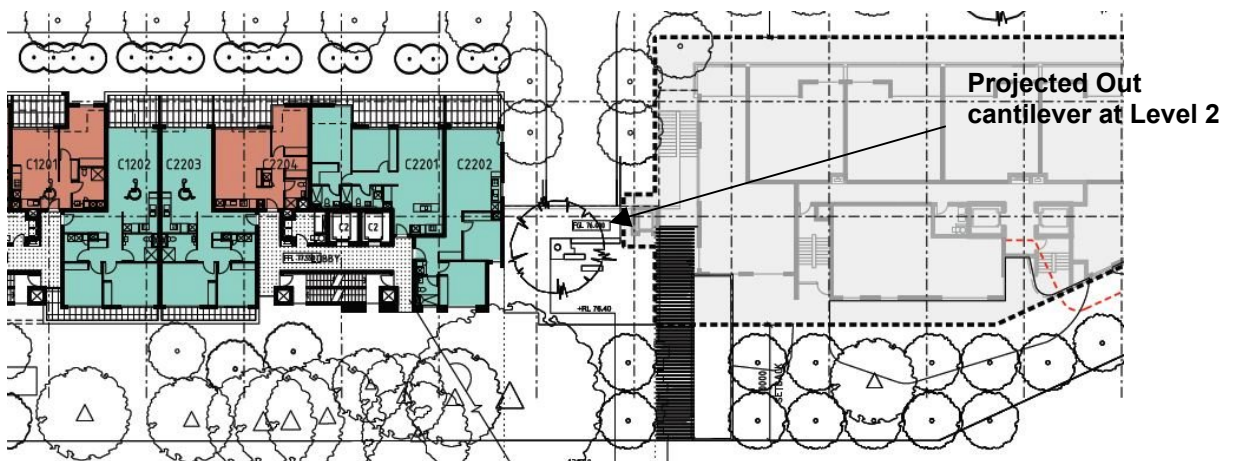


Figure 16: Bridge connecting Building C and L.

4 RECOMMENDATIONS

4.1 GROUND LEVEL AREAS

Vipac has carefully considered the nearby ground level public areas at the base of the proposed Development and predicts that the proposed Development is not likely generate wind conditions in excess of the recommended criteria as long as the following measures are put in place:

- Plantations on the south faces of Building W, C and L.

5 CONCLUSION

An appraisal of the likely wind conditions adjacent to the proposed Development Macquarie Village, 110-114 Herring road, Macquarie Park has been made.

The findings of this study can be summarised as follows:

- The proposed Development is not expected to generate wind condition in excess of the recommended criteria on the ground level with:
 - Plantations on the south faces of Building W, C and L.

The assessments provided in this report have been made based on experience of similar situations in Sydney and around the world. As with any opinion, it is possible that an assessment of wind effects based on experience and without wind tunnel model testing can be in error.

This Report has been Prepared

For

Stamford Property Services

By

VIPAC ENGINEERS & SCIENTISTS LTD.

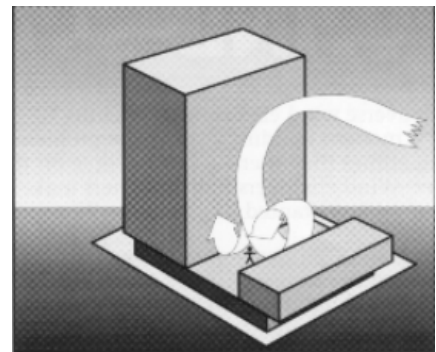
APPENDIX A – TERMINOLOGY OF ENVIRONMENTAL WINDS

Atmospheric Boundary Layer

As wind flows over the earth it encounters various roughness elements and terrain such as water, forests, houses and buildings. To varying degrees, these elements reduce the mean wind speed at low elevations and increase air turbulence. The wind above these obstructions travels with unattenuated velocity, driven by atmospheric pressure gradients. The resultant increase in wind speed with height above ground is known as a **wind velocity profile**. When this wind profile encounters a tall building, some of the fast moving wind at upper elevations is diverted down to ground level resulting in local adverse wind effects.

The terminology used to describe the wind flow patterns around the proposed Development is based on the aerodynamic mechanism, direction and nature of the wind flow.

Downwash – refers to a flow of air down the exposed (the upwind) face of a tower. A tall tower can deflect downwards a fast moving wind from higher elevations.

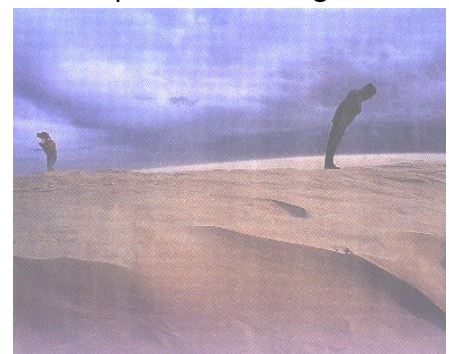


Corner Accelerations – when wind flows around the corner of a building, parcels of air closer to the façade travel longer distances and tend to speed up relative to those parcels in the freely flowing stream.

Flow separation – when wind flowing along a surface meets a discontinuity, like a corner or a step, it may detach from that surface. The resultant energy dissipation produces increased turbulence in the flow. Flow separation at a building corner or at a solid screen can result in gusty conditions.

Flow channelling – the well-known “street canyon” effect occurs when a large volume of air is funnelled through a constricted pathway. To maintain flow continuity the wind must speed up as it passes through the constriction. Examples of this might occur between two towers, in a narrowing street or under a bridge.































Direct Exposure – a location with little upstream shielding for a wind direction of interest. The location will be exposed to the unabated mean wind and gust velocity. Coastal and open water frontage may have such exposure.



APPENDIX B - REFERENCES

- [1] *Structural Design Actions, Part 2: Wind Actions*, Australian/New Zealand Standard 1170.2:2002
- [2] *Wind Effects on Structures* E. Simiu, R Scanlan, Publisher: Wiley-Interscience
- [3] *Architectural Aerodynamics* R. Aynsley, W. Melbourne, B. Vickery, Publisher: Applied Science Publishers

APPENDIX C – DRAWING LIST

Name	Size	Date Modified	
 10030_DA2001_C	11/8/2011 10:16 AM	Adobe Acrobat D...	372 KB
 10030_DA2002_C	11/8/2011 10:18 AM	Adobe Acrobat D...	303 KB
 10030_DA2003_C	11/8/2011 10:19 AM	Adobe Acrobat D...	261 KB
 10030_DA2100_C	11/8/2011 10:17 AM	Adobe Acrobat D...	1,764 KB
 10030_DA2102_C	11/8/2011 10:19 AM	Adobe Acrobat D...	1,765 KB
 10030_DA2103_C	11/8/2011 10:16 AM	Adobe Acrobat D...	726 KB
 10030_DA2105_C	11/8/2011 10:18 AM	Adobe Acrobat D...	687 KB
 10030_DA2106_C	11/8/2011 10:15 AM	Adobe Acrobat D...	677 KB
 10030_DA2107_C	11/8/2011 10:16 AM	Adobe Acrobat D...	609 KB
 10030_DA2108_C	11/8/2011 10:18 AM	Adobe Acrobat D...	640 KB
 10030_DA2109_C	11/8/2011 10:19 AM	Adobe Acrobat D...	678 KB
 10030_DA2110_C	11/8/2011 10:17 AM	Adobe Acrobat D...	668 KB
 10030_DA2111_C	11/8/2011 10:18 AM	Adobe Acrobat D...	432 KB
 10030_DA2112_C	11/8/2011 10:20 AM	Adobe Acrobat D...	435 KB
 10030_DA2113_C	11/8/2011 10:17 AM	Adobe Acrobat D...	427 KB
 10030_DA2115_C	11/8/2011 10:18 AM	Adobe Acrobat D...	416 KB
 10030_DA2116_C	11/8/2011 10:20 AM	Adobe Acrobat D...	379 KB
 10030_DA2117_C	11/8/2011 10:17 AM	Adobe Acrobat D...	510 KB
 10030_DA2118_C	11/8/2011 10:18 AM	Adobe Acrobat D...	273 KB
 10030_DA2119_C	11/8/2011 10:20 AM	Adobe Acrobat D...	268 KB
 10030_DA2120_C	11/8/2011 10:17 AM	Adobe Acrobat D...	262 KB
 10030_DA2121_C	11/8/2011 10:18 AM	Adobe Acrobat D...	259 KB
 10030_DA2122_C	11/8/2011 10:19 AM	Adobe Acrobat D...	236 KB
 10030_DA3100_C	11/8/2011 10:12 AM	Adobe Acrobat D...	3,094 KB
 10030_DA3101_C	11/8/2011 10:12 AM	Adobe Acrobat D...	2,788 KB
 10030_DA3102_C	11/8/2011 10:12 AM	Adobe Acrobat D...	2,538 KB
 10030_DA3110_C	11/8/2011 10:12 AM	Adobe Acrobat D...	1,149 KB
 10030_DA3111_C	11/8/2011 10:13 AM	Adobe Acrobat D...	1,423 KB
 10030_DA3112_C	11/8/2011 10:13 AM	Adobe Acrobat D...	1,265 KB
 10030_DA3113_C	11/8/2011 10:11 AM	Adobe Acrobat D...	670 KB

